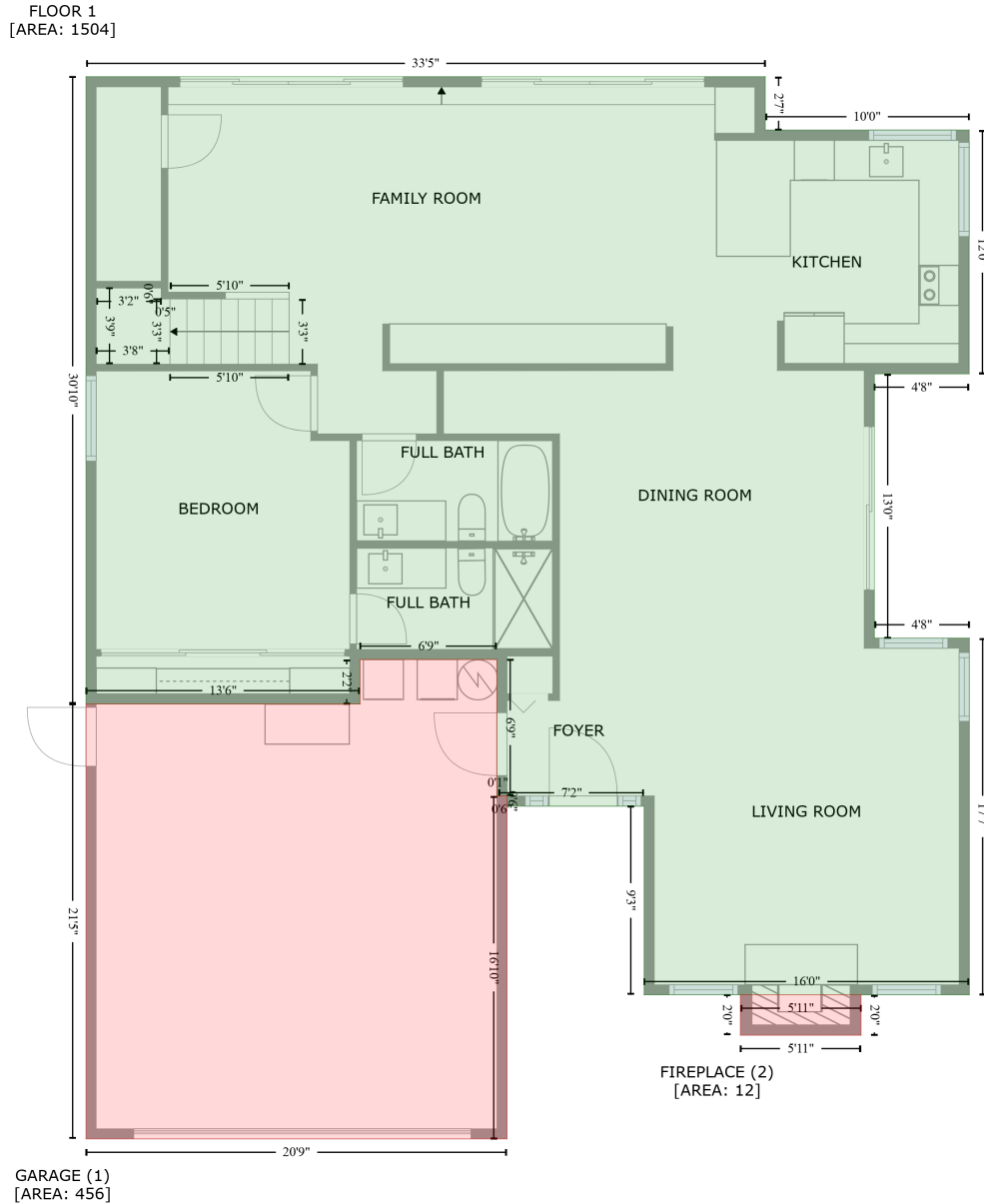


5442 East Roanoke Avenue, Camelback East, Phoenix, Maricopa County, Arizona, United States, 85008

Gross Living Area: 1945 sq. ft



Space	Area (sq. ft)	Calculation <small>Coordinate Polygon Area Algorithm using inches</small>
FLOOR 1 (Living area)	1504	$ \begin{aligned} & -((402.9 + 402.9) * (5.4 - 36.9) + (402.9 + 523.3) * (36.9 - 36.9) + (523.3 + 523.3) * (36.9 - 180.8) \\ & + (523.3 + 467.4) * (180.8 - 180.8) + (467.4 + 467.4) * (180.8 - 336.8) + (467.4 + 523.4) * (336.8 - \\ & 336.8) + (523.4 + 523.4) * (336.8 - 547.3) + (523.4 + 331.4) * (547.3 - 547.3) + (331.4 + 331.4) * \\ & (547.3 - 435.9) + (331.4 + 250.5) * (435.9 - 435.9) + (250.5 + 250.5) * (435.9 - 429.9) + (250.5 + \\ & 244.5) * (429.9 - 429.9) + (244.5 + 244.5) * (429.9 - 349.4) + (244.5 + 163.7) * (349.4 - 349.4) + \\ & (163.7 + 163.7) * (349.4 - 375.7) + (163.7 + 1.9) * (375.7 - 375.7) + (1.9 + 1.9) * (375.7 - 5.4) + \\ & (1.9 + 402.9) * (5.4 - 5.4)) * 0.5 * 0.00694 \end{aligned} $

5442 East Roanoke Avenue, Camelback East, Phoenix, Maricopa County, Arizona, United States, 85008

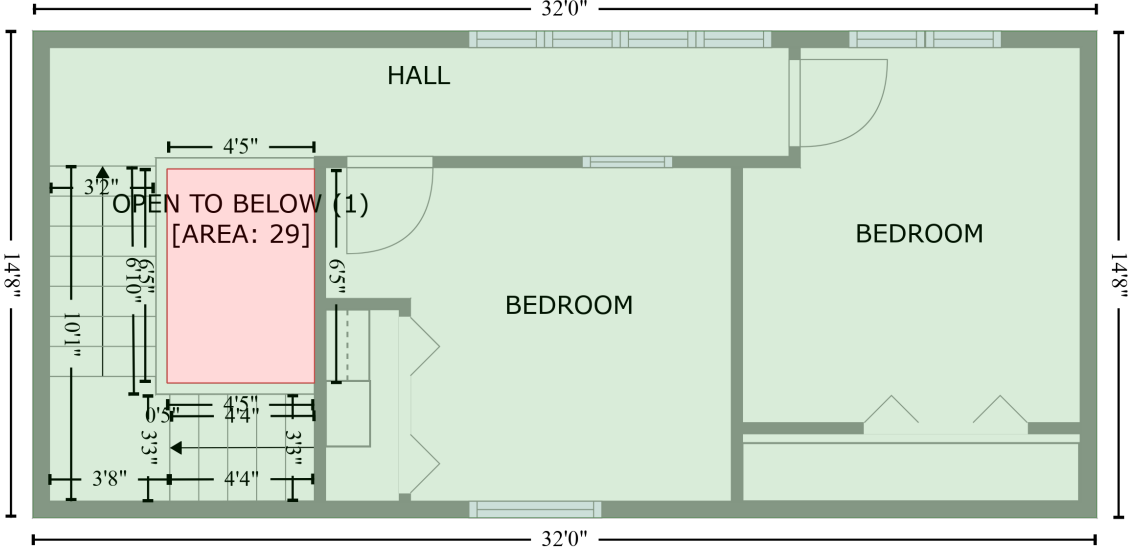
Gross Living Area: 1945 sq. ft

Space	Area (sq. ft)	Calculation <small>Coordinate Polygon Area Algorithm using inches</small>
GARAGE (Non-living area)	456	$-((244.5 + 244.5) * (349.4 - 429.9) + (244.5 + 250.5) * (429.9 - 429.9) + (250.5 + 250.5) * (429.9 - 632.4) + (250.5 + 1.9) * (632.4 - 632.4) + (1.9 + 1.9) * (632.4 - 375.7) + (1.9 + 163.7) * (375.7 - 375.7) + (163.7 + 163.7) * (375.7 - 349.4) + (163.7 + 244.5) * (349.4 - 349.4)) * 0.5 * 0.00694$
FIREPLACE (Non-living area)	12	$-((459.5 + 459.5) * (547.3 - 571.2) + (459.5 + 388.3) * (571.2 - 571.2) + (388.3 + 388.3) * (571.2 - 547.3) + (388.3 + 459.5) * (547.3 - 547.3)) * 0.5 * 0.00694$

5442 East Roanoke Avenue, Camelback East, Phoenix, Maricopa County, Arizona, United States, 85008

Gross Living Area: 1945 sq. ft

FLOOR 2
[AREA: 441]



Space	Area (sq. ft)	Calculation <small>Coordinate Polygon Area Algorithm using inches</small>
FLOOR 2 (Living area)	441	$-\left((1.9 + 386.3) * (5.4 - 5.4) + (386.3 + 386.3) * (5.4 - 181.1) + (386.3 + 1.9) * (181.1 - 181.1) + (1.9 + 1.9) * (181.1 - 5.4)\right) * 0.5 * 0.00694 - \left((103.6 + 50.4) * (55.2 - 55.2) + (50.4 + 50.4) * (55.2 - 132.5) + (50.4 + 103.6) * (132.5 - 132.5) + (103.6 + 103.6) * (132.5 - 55.2)\right) * 0.5 * 0.00694$
OPEN TO BELOW (Non-living area)	29	$-\left((103.6 + 103.6) * (55.2 - 132.5) + (103.6 + 50.4) * (132.5 - 132.5) + (50.4 + 50.4) * (132.5 - 55.2) + (50.4 + 103.6) * (55.2 - 55.2)\right) * 0.5 * 0.00694$