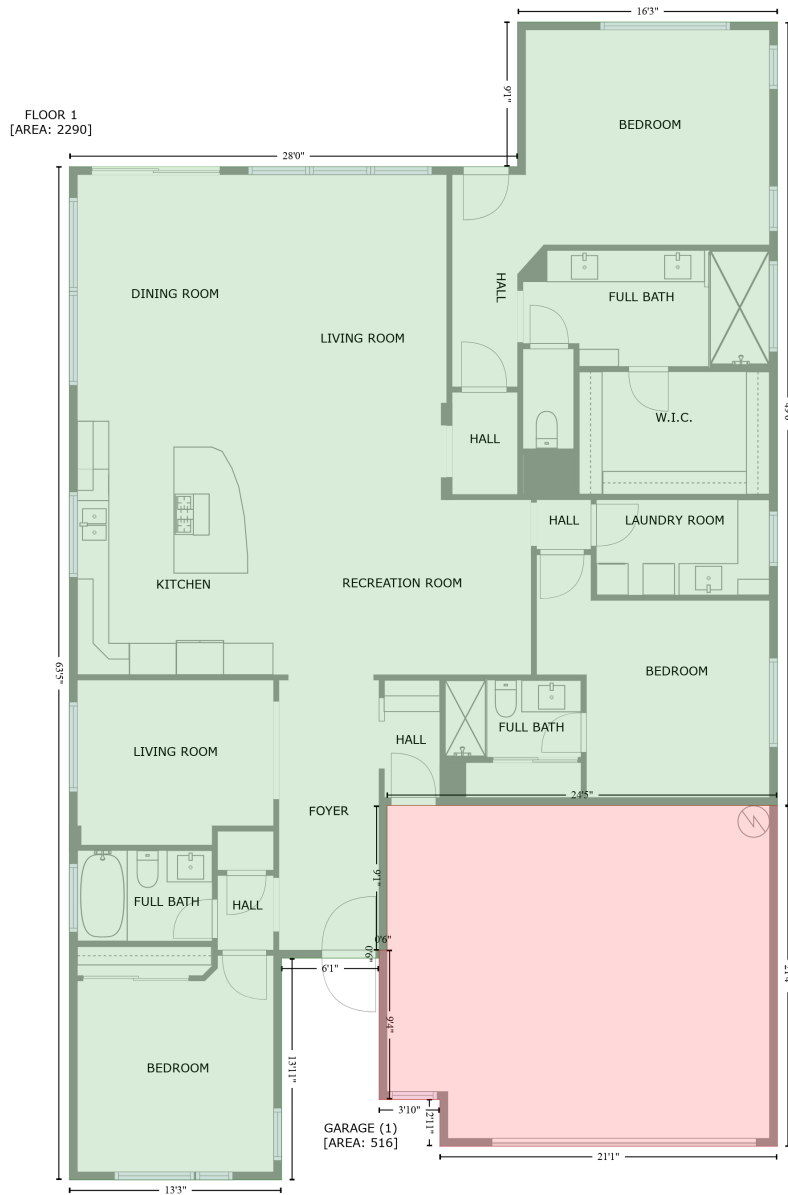


# 30356 North 130th Glen, Vistancia South, Peoria, Maricopa County, Arizona, United States, 85383

Gross Living Area: 2290 sq. ft



Space	Area (sq. ft)	Calculation
FLOOR 1 (Living area)	2290	Coordinate Polygon Area Algorithm using inches $-((672.7 + 672.7) * (-141.2 - 447.2) + (672.7 + 379.8) * (447.2 - 447.2) + (379.8 + 379.8) * (447.2 - 555.8) + (379.8 + 373.8) * (555.8 - 555.8) + (373.8 + 373.8) * (555.8 - 561.8) + (373.8 + 300.7) * (561.8 - 561.8) + (300.7 + 300.7) * (561.8 - 728.3) + (300.7 + 141.4) * (728.3 - 728.3) + (141.4 + 141.4) * (728.3 - -32.5) + (141.4 + 477.7) * (-32.5 - -32.5) + (477.7 + 477.7) * (-32.5 - -141.2) + (477.7 + 672.7) * (-141.2 - -141.2)) * 0.5 * 0.00694$
GARAGE	516	$-((672.7 + 672.7) * (447.2 - 703.1) + (672.7 + 419.4) * (703.1 - 703.1) + (419.4 + 419.4) * (703.1 -$

# 30356 North 130th Glen, Vistancia South, Peoria, Maricopa County, Arizona, United States, 85383

Gross Living Area: 2290 sq. ft

Space	Area (sq. ft)	Calculation <small>Coordinate Polygon Area Algorithm using inches</small>
(Non-living area)		$\frac{667.9 + (419.4 + 373.8) * (667.9 - 667.9) + (373.8 + 373.8) * (667.9 - 555.8) + (373.8 + 379.8) * (555.8 - 555.8) + (379.8 + 379.8) * (555.8 - 447.2) + (379.8 + 672.7) * (447.2 - 447.2)}{2} * 0.5 * 0.00694$