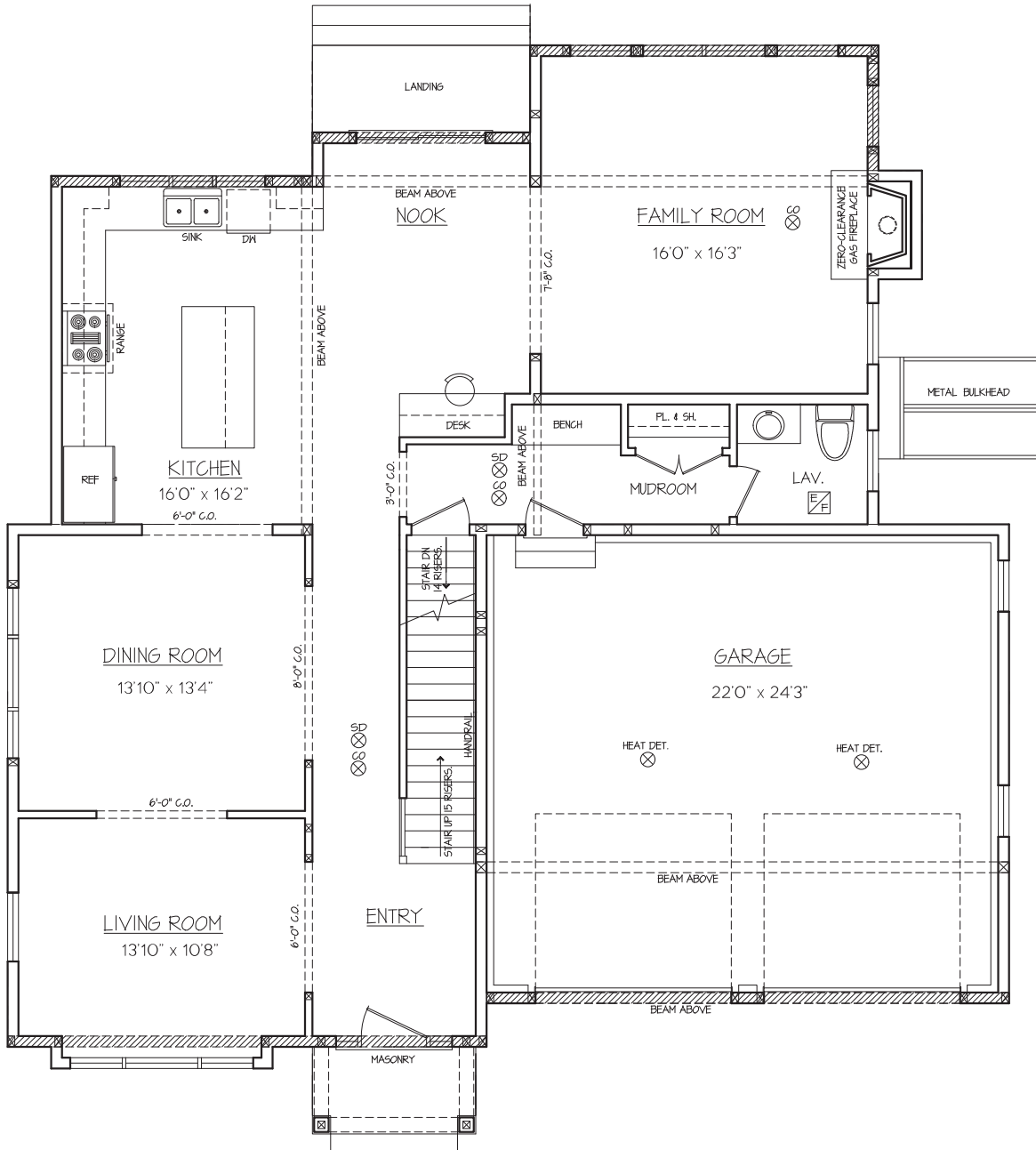


# 8 MINA WAY, BRIGHTON

1st and 2nd Floor  
Gross Finished Living Area  
2,820 sq. ft.



FIRST FLOOR

The details and specifications of these floor plans are approximate and for information only.  
No warranties are made as to their accuracy.

Marketing Agent:

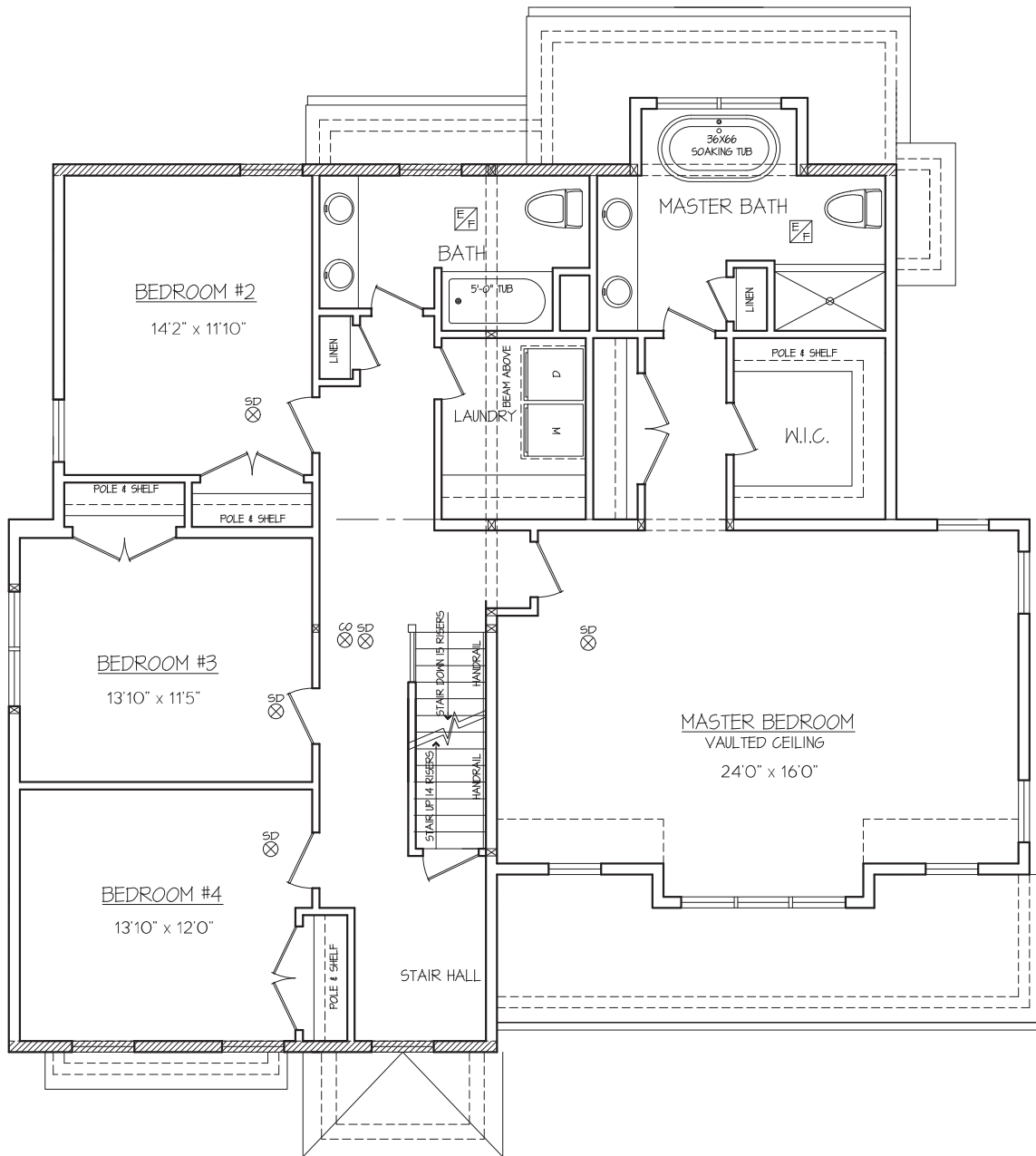
**Michael Rothstein**  
617-470-3165

[www.MinaWayBrighton.com](http://www.MinaWayBrighton.com)

**Hammond**  
RESIDENTIAL REAL ESTATE

# 8 MINA WAY, BRIGHTON

1st and 2nd Floor  
Gross Finished Living Area  
2,820 sq. ft.



SECOND FLOOR

The details and specifications of these floor plans are approximate and for information only.  
No warranties are made as to their accuracy.

Marketing Agent:

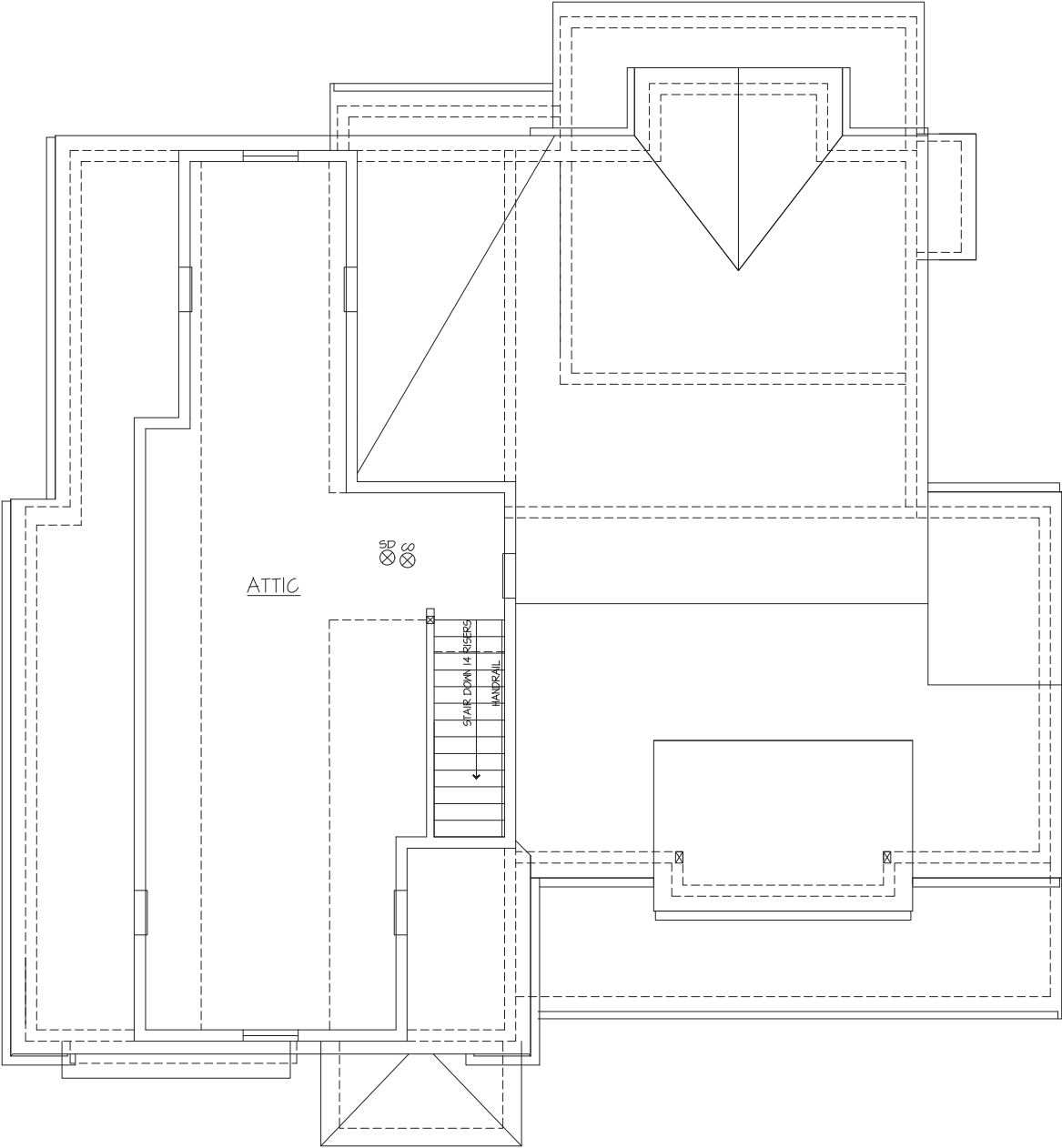
**Michael Rothstein**  
617-470-3165

[www.MinaWayBrighton.com](http://www.MinaWayBrighton.com)

 **Hammond**  
RESIDENTIAL REAL ESTATE

# 8 MINA WAY, BRIGHTON

1st and 2nd Floor  
Gross Finished Living Area  
2,820 sq. ft.



ATTIC

The details and specifications of these floor plans are approximate and for information only.  
No warranties are made as to their accuracy.

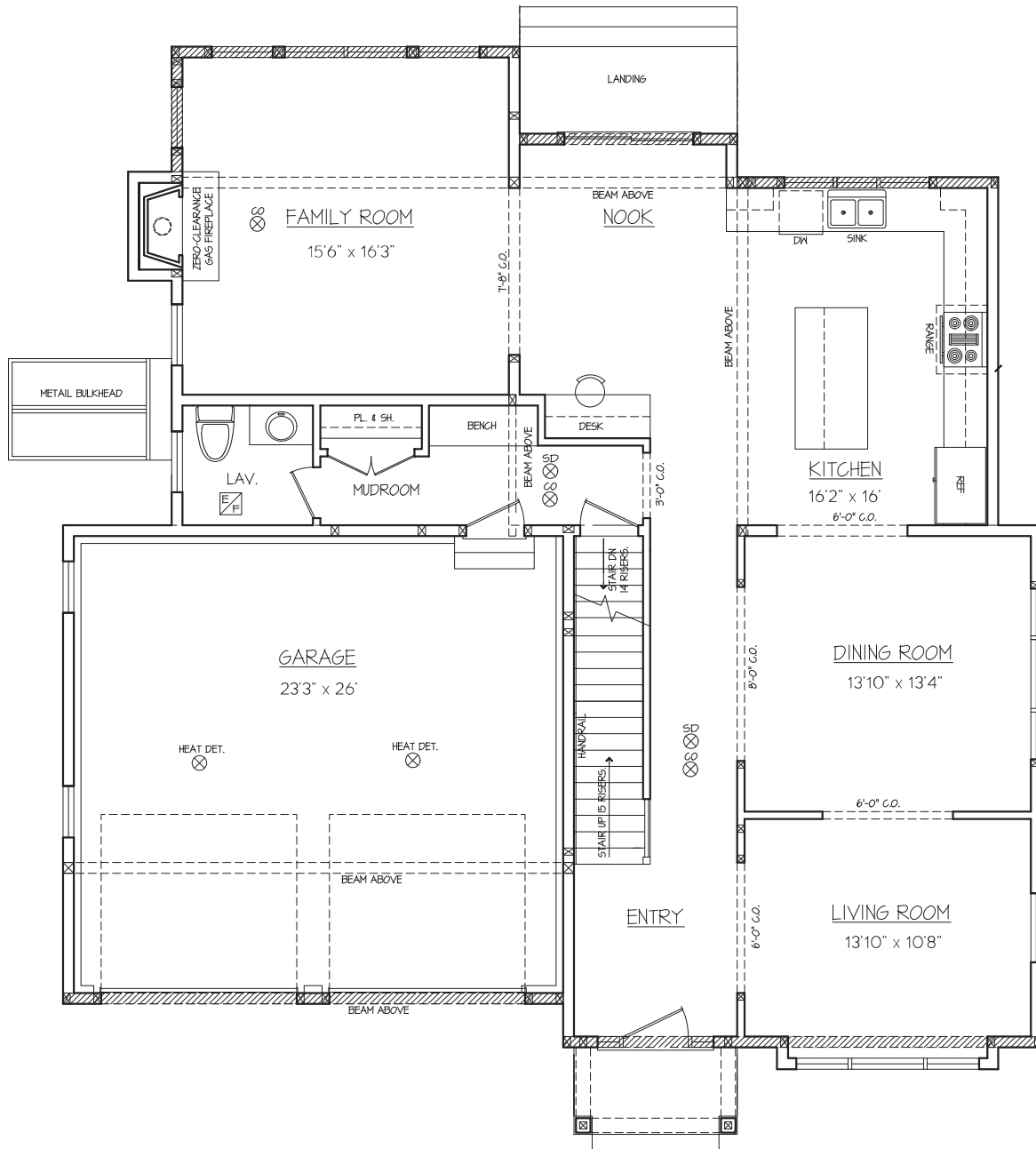
Marketing Agent:  
**Michael Rothstein**  
617-470-3165

[www.MinaWayBrighton.com](http://www.MinaWayBrighton.com)

**Hammond**  
RESIDENTIAL REAL ESTATE

# 9 MINA WAY, BRIGHTON

1st and 2nd Floor  
Gross Finished Living Area  
2,804 sq. ft.



FIRST FLOOR

The details and specifications of these floor plans are approximate and for information only.  
No warranties are made as to their accuracy.

Marketing Agent:

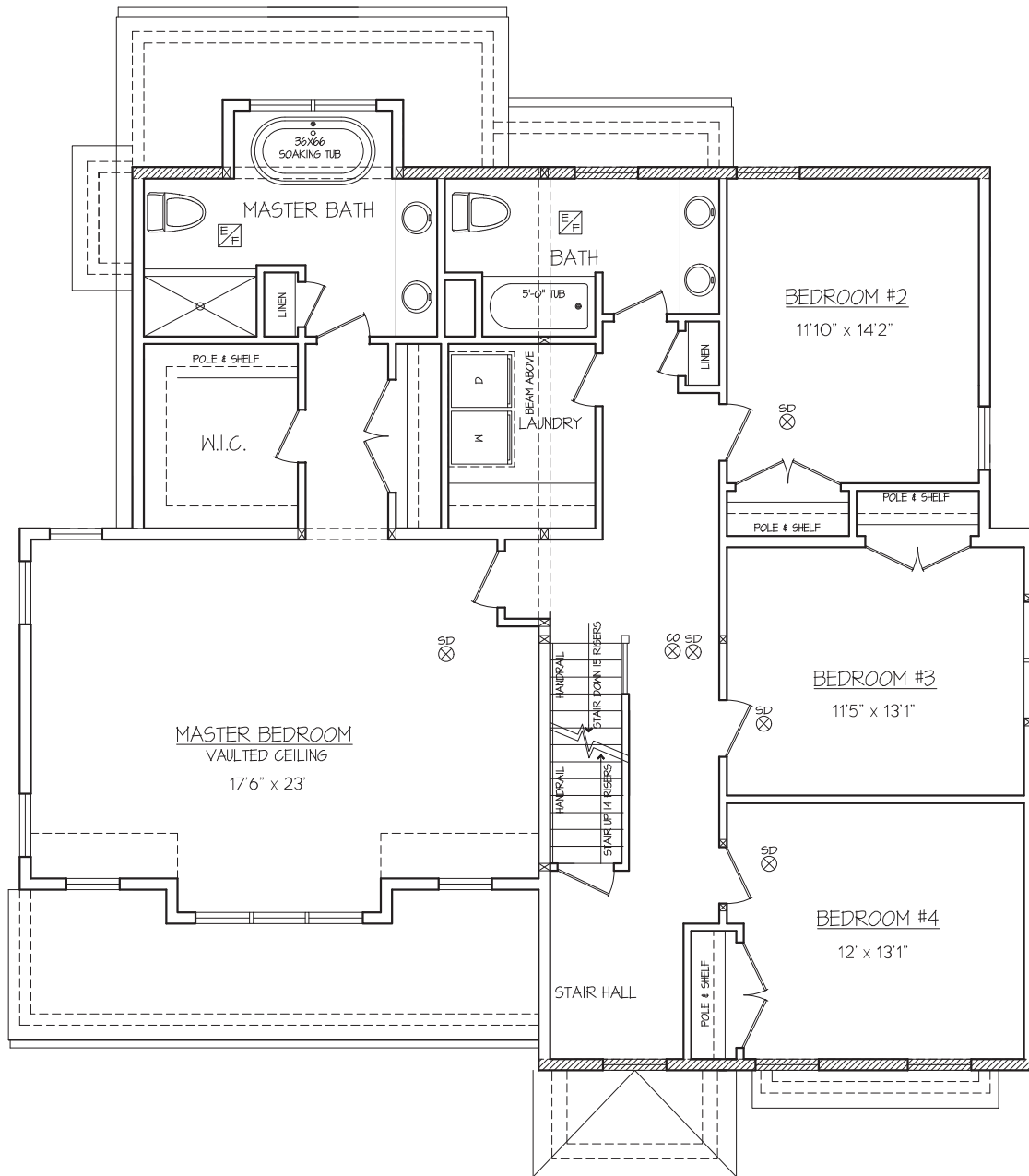
**Michael Rothstein**  
617-470-3165

[www.MinaWayBrighton.com](http://www.MinaWayBrighton.com)

 **Hammond**  
RESIDENTIAL REAL ESTATE

# 9 MINA WAY, BRIGHTON

1st and 2nd Floor  
Gross Finished Living Area  
2,804 sq. ft.



SECOND FLOOR

The details and specifications of these floor plans are approximate and for information only.  
No warranties are made as to their accuracy.

Marketing Agent:

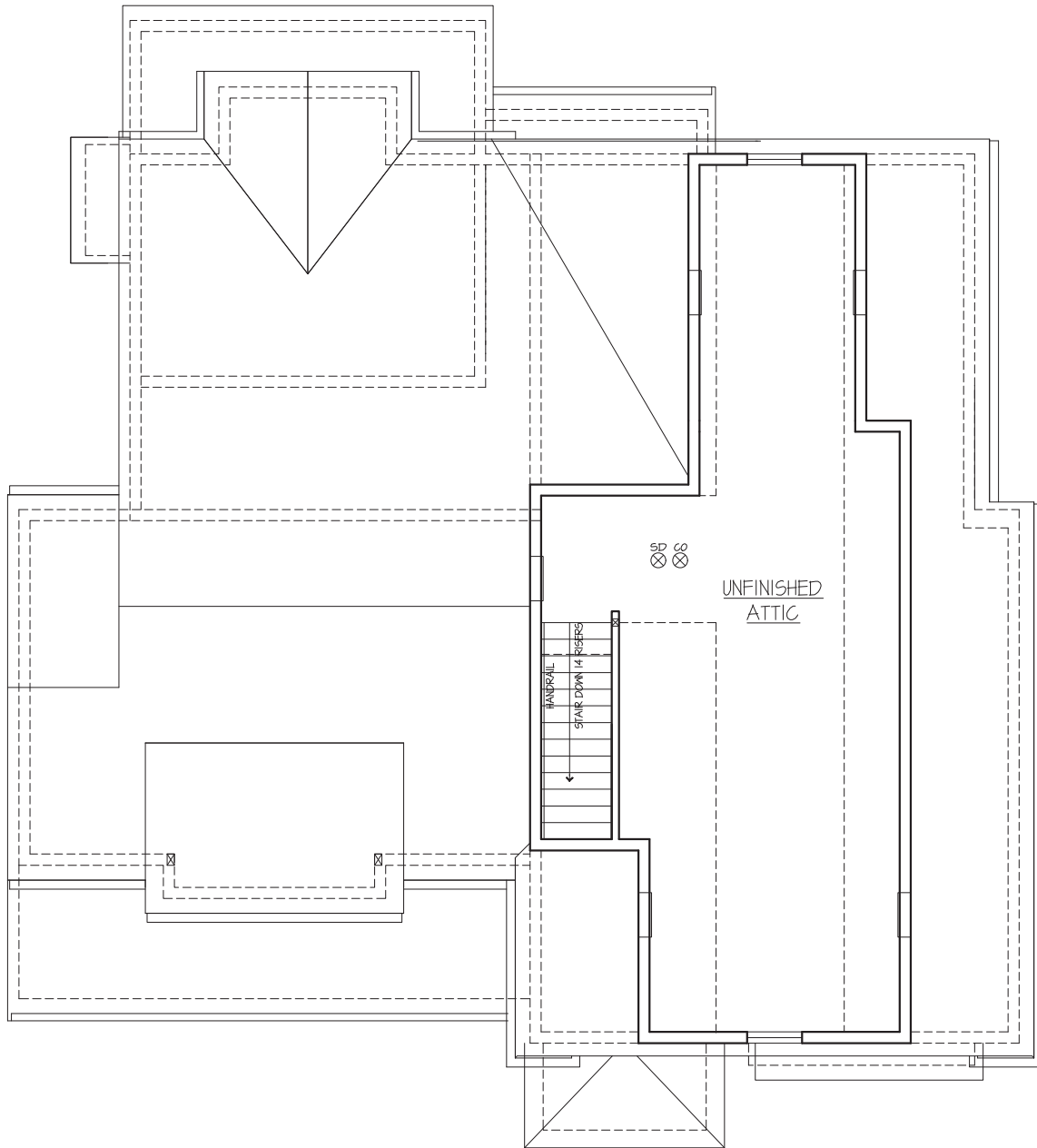
**Michael Rothstein**  
617-470-3165

[www.MinaWayBrighton.com](http://www.MinaWayBrighton.com)

**Hammond**  
RESIDENTIAL REAL ESTATE

# 9 MINA WAY, BRIGHTON

1st and 2nd Floor  
Gross Finished Living Area  
2,804 sq. ft.



ATTIC

The details and specifications of these floor plans are approximate and for information only.  
No warranties are made as to their accuracy.

Marketing Agent:

**Michael Rothstein**

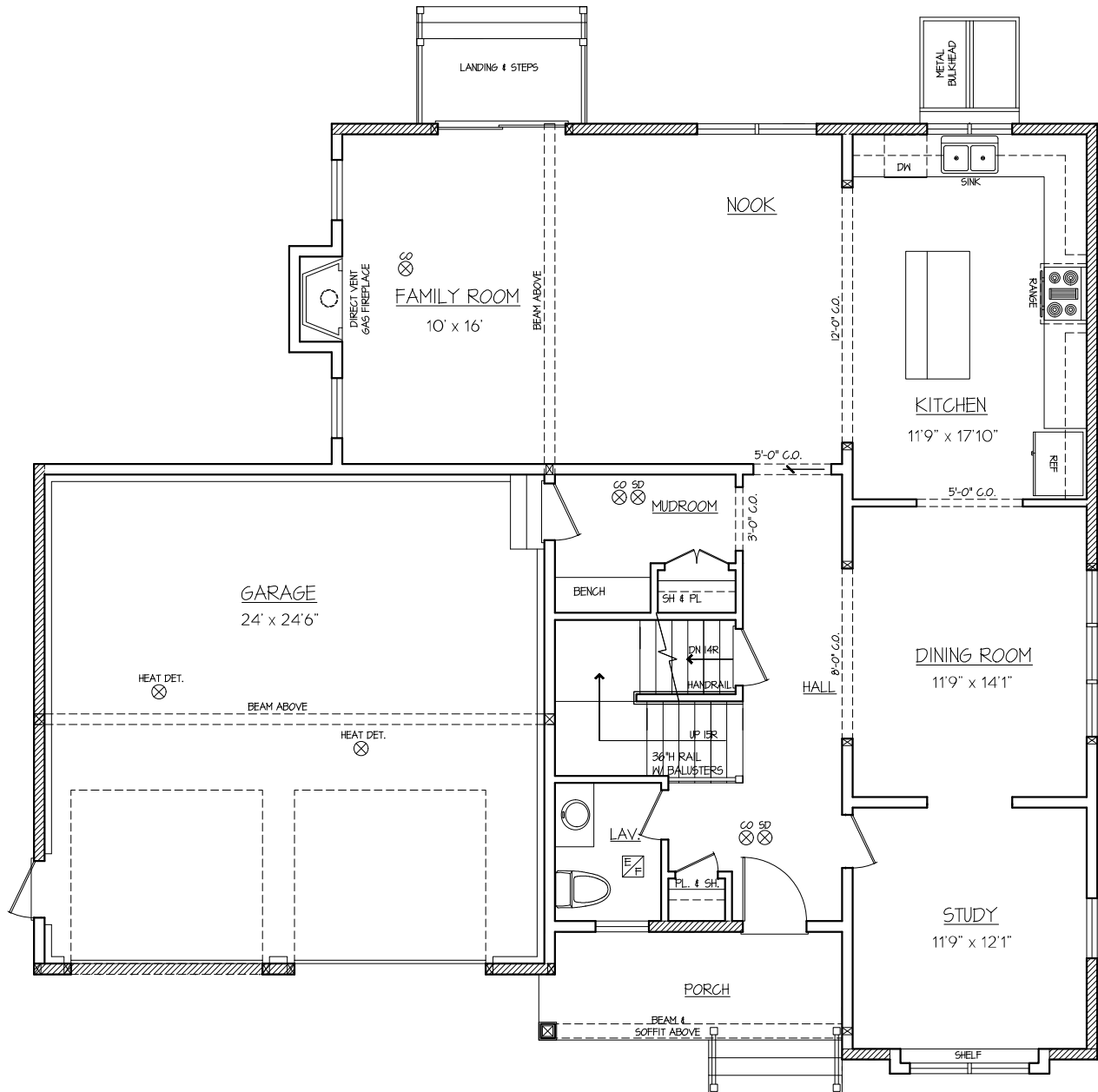
**617-470-3165**

[www.MinaWayBrighton.com](http://www.MinaWayBrighton.com)

 **Hammond**  
RESIDENTIAL REAL ESTATE

# 10 MINA WAY, BRIGHTON

1st and 2nd Floor  
Gross Finished Living Area  
2,787 sq. ft.



FIRST FLOOR

The details and specifications of these floor plans are approximate and for information only.  
No warranties are made as to their accuracy.

Marketing Agent:

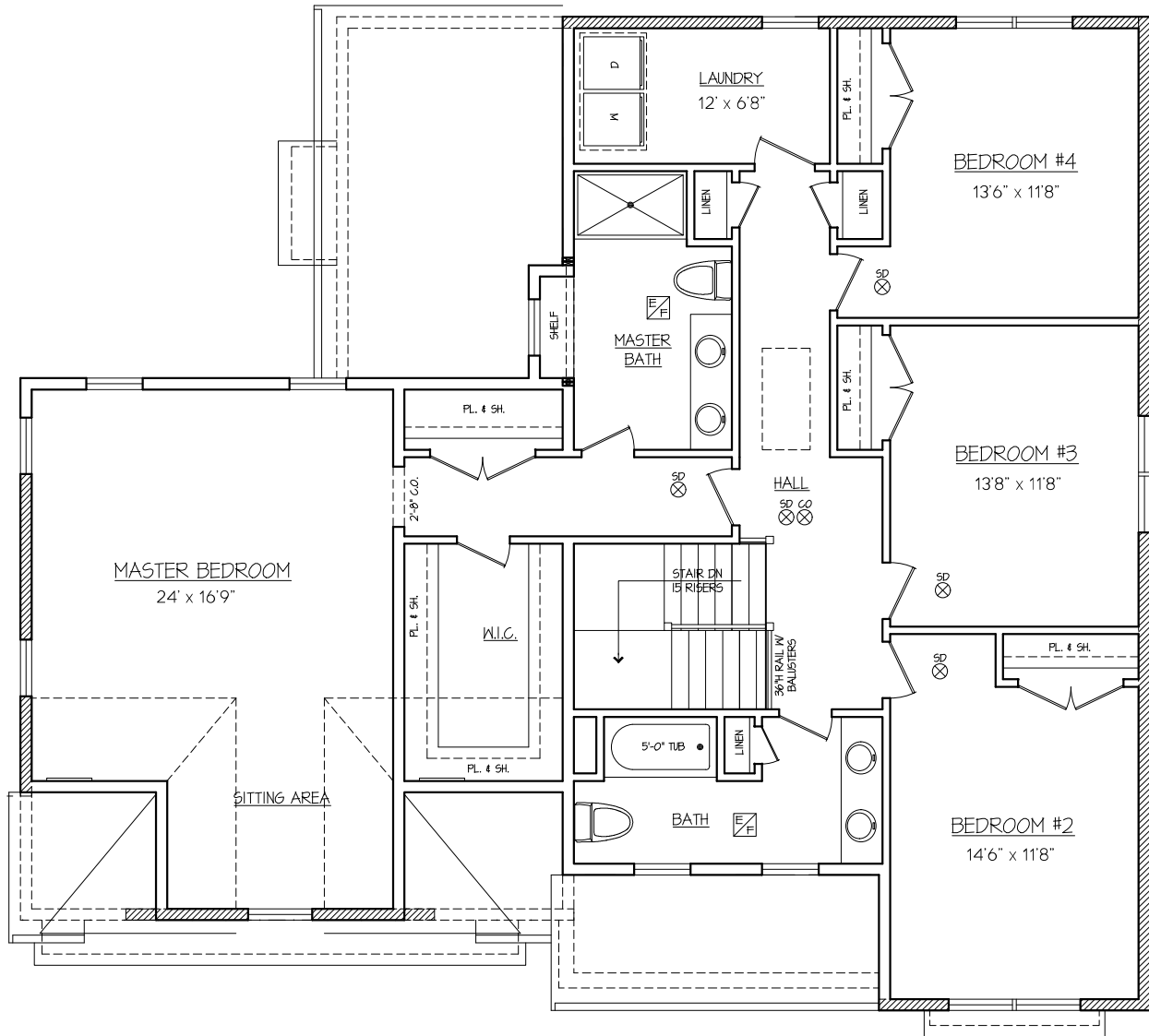
**Michael Rothstein**  
617-470-3165

[www.MinaWayBrighton.com](http://www.MinaWayBrighton.com)

 **Hammond**  
RESIDENTIAL REAL ESTATE

# 10 MINA WAY, BRIGHTON

1st and 2nd Floor  
Gross Finished Living Area  
2,787 sq. ft.



## SECOND FLOOR

The details and specifications of these floor plans are approximate and for information only.  
No warranties are made as to their accuracy.

Marketing Agent:

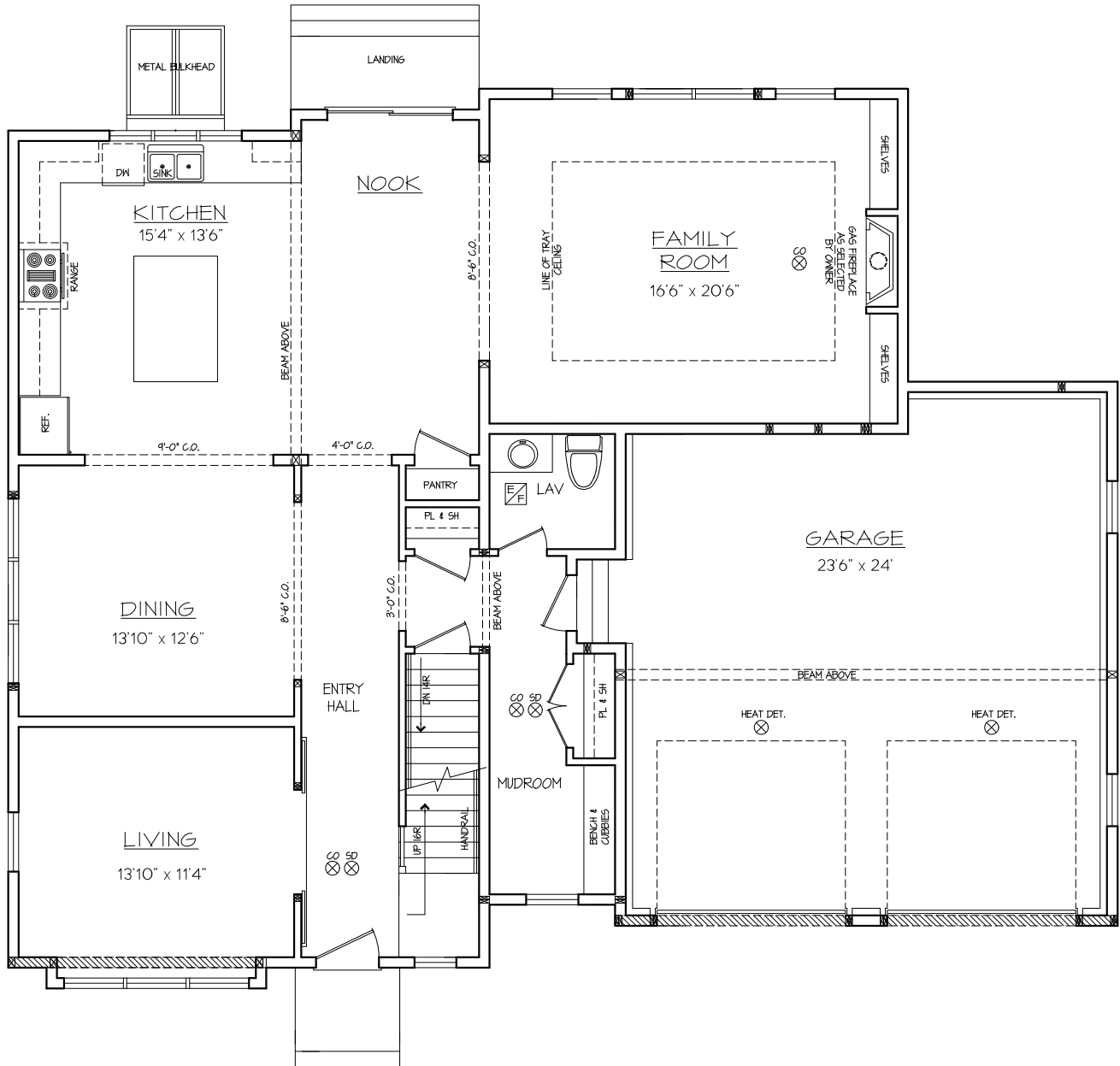
**Michael Rothstein**  
617-470-3165

[www.MinaWayBrighton.com](http://www.MinaWayBrighton.com)

 **Hammond**  
RESIDENTIAL REAL ESTATE

# 11 MINA WAY, BRIGHTON

1st and 2nd Floor  
Gross Finished Living Area  
2,912 sq. ft.



FIRST FLOOR

The details and specifications of these floor plans are approximate and for information only.  
No warranties are made as to their accuracy.

Marketing Agent:

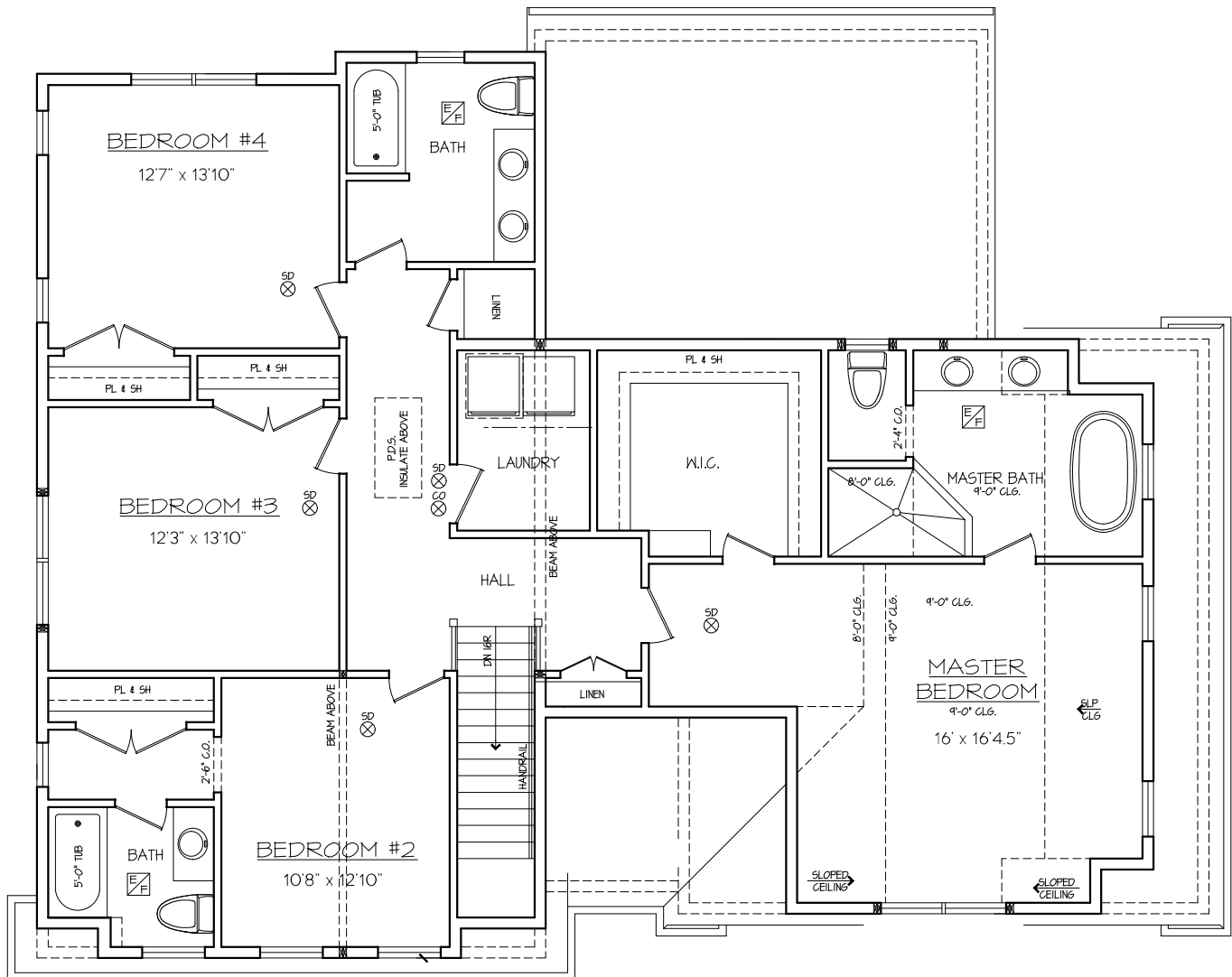
**Michael Rothstein**  
617-470-3165

[www.MinaWayBrighton.com](http://www.MinaWayBrighton.com)

**Hammond**  
RESIDENTIAL REAL ESTATE

# 11 MINA WAY, BRIGHTON

1st and 2nd Floor  
Gross Finished Living Area  
2,912 sq. ft.



## SECOND FLOOR

The details and specifications of these floor plans are approximate and for information only.  
No warranties are made as to their accuracy.

Marketing Agent:

**Michael Rothstein**  
617-470-3165

[www.MinaWayBrighton.com](http://www.MinaWayBrighton.com)

**Hammond**  
RESIDENTIAL REAL ESTATE