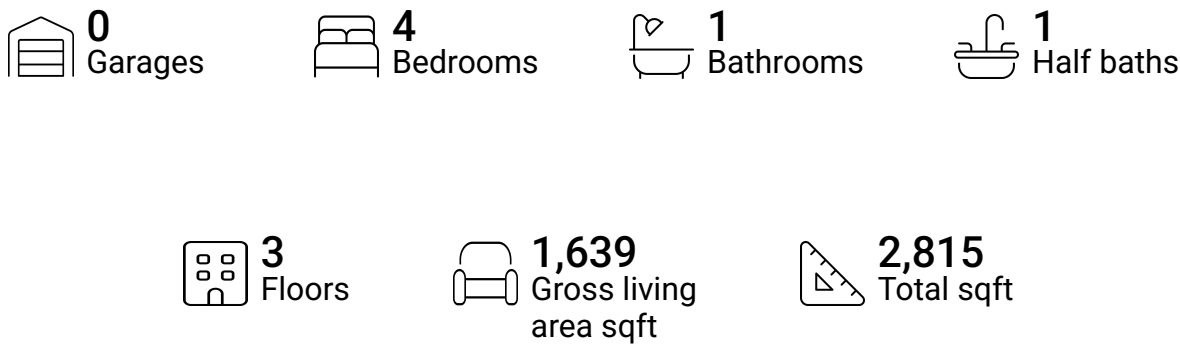


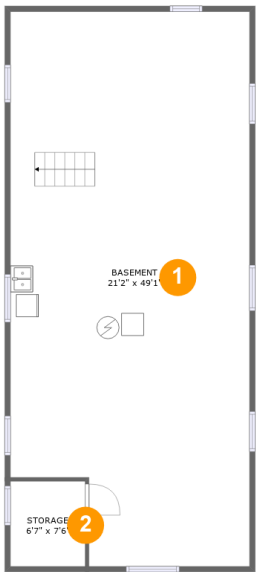
68 Rogers Avenue, Schiller Park, Buffalo, Erie County,  
New York, United States, 14211



Property summary



68 Rogers Avenue, Schiller Park, Buffalo, Erie County,  
New York, United States, 14211

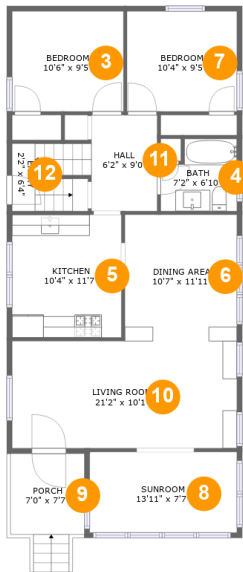


Room dimensions

Floor 1 Total sqft: 1112    Living area: 0

#		Dimensions	sqft	Counted as living area
1	Basement	21'2" x 49'1"	986 sq. ft	No
2	Storage	6'7" x 7'6"	50 sq. ft	No

68 Rogers Avenue, Schiller Park, Buffalo, Erie County,  
New York, United States, 14211

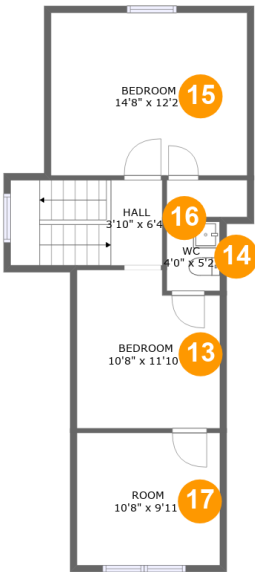


Room dimensions

Floor 2Total sqft: 1118    Living area: 1054

#		Dimensions	sqft	Counted as living area
3	Bedroom	10'6" x 9'5"	99 sq. ft	Yes
4	Bath	7'2" x 6'10"	44 sq. ft	Yes
5	Kitchen	10'4" x 11'7"	119 sq. ft	Yes
6	Dining Room	10'7" x 11'11"	126 sq. ft	Yes
7	Bedroom	10'4" x 9'5"	98 sq. ft	Yes
8	Room	13'11" x 7'7"	106 sq. ft	Yes
9	Outdoor	7'0" x 7'7"	64 sq. ft	No
10	Living Room	21'2" x 10'1"	214 sq. ft	Yes
11	Hall	6'2" x 9'0"	72 sq. ft	Yes
12	Entry	2'2" x 6'4"	29 sq. ft	Yes

68 Rogers Avenue, Schiller Park, Buffalo, Erie County,  
New York, United States, 14211



Room dimensions

Floor 3 Total sqft: 585    Living area: 585

#		Dimensions	sqft	Counted as living area
13	Bedroom	10'8" x 11'10"	118 sq. ft	Yes
14	Bath	4'0" x 5'2"	21 sq. ft	Yes
15	Bedroom	14'8" x 12'2"	178 sq. ft	Yes
16	Hall	3'10" x 6'4"	72 sq. ft	Yes
17	Room	10'8" x 9'11"	105 sq. ft	Yes

68 Rogers Avenue, Schiller Park, Buffalo, Erie County,  
New York, United States, 14211

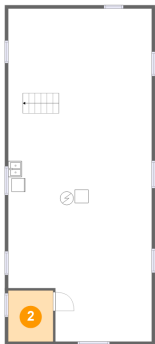
**1 Floor 1 - Basement**



Dimensions: 21'2" x 49'1"  
Area: 986 sq. ft  
Counted as living area: No

Heated: Yes  
Finished: No  
Enclosed: Yes  
Contiguous: Yes  
Permitted: Yes  
Wet space: No  
Addition: No  
Conversion: No

**2 Floor 1 - Storage**



Dimensions: 6'7" x 7'6"  
Area: 50 sq. ft  
Counted as living area: No

Heated: No  
Finished: No  
Enclosed: No  
Contiguous: Yes  
Permitted: Yes  
Wet space: No  
Addition: No  
Conversion: No

**68 Rogers Avenue, Schiller Park, Buffalo, Erie County,  
New York, United States, 14211**

### 3 Floor 2 - Bedroom



Dimensions: 10'6" x 9'5"  
Area: 99 sq. ft  
Counted as living area: Yes

Heated: Yes  
Finished: Yes  
Enclosed: Yes  
Contiguous: Yes  
Permitted: Yes  
Wet space: No  
Addition: No  
Conversion: No

### 4 Floor 2 - Bath



Dimensions: 7'2" x 6'10"  
Area: 44 sq. ft  
Counted as living area: Yes

Heated: Yes  
Finished: Yes  
Enclosed: Yes  
Contiguous: Yes  
Permitted: Yes  
Wet space: Yes  
Addition: No  
Conversion: No

### 5 Floor 2 - Kitchen



Dimensions: 10'4" x 11'7"  
Area: 119 sq. ft  
Counted as living area: Yes

Heated: Yes  
Finished: Yes  
Enclosed: Yes  
Contiguous: Yes  
Permitted: Yes  
Wet space: No  
Addition: No  
Conversion: No

68 Rogers Avenue, Schiller Park, Buffalo, Erie County,  
New York, United States, 14211

**6** Floor 2 - Dining Room



Dimensions: 10'7" x 11'11"  
Area: 126 sq. ft  
Counted as living area: Yes

Heated: Yes  
Finished: Yes  
Enclosed: Yes  
Contiguous: Yes  
Permitted: Yes  
Wet space: No  
Addition: No  
Conversion: No

**7** Floor 2 - Bedroom



Dimensions: 10'4" x 9'5"  
Area: 98 sq. ft  
Counted as living area: Yes

Heated: Yes  
Finished: Yes  
Enclosed: Yes  
Contiguous: Yes  
Permitted: Yes  
Wet space: No  
Addition: No  
Conversion: No

**8** Floor 2 - Room

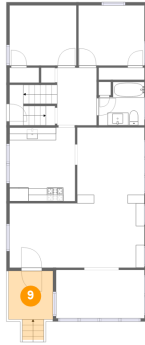


Dimensions: 13'11" x 7'7"  
Area: 106 sq. ft  
Counted as living area: Yes

Heated: Yes  
Finished: Yes  
Enclosed: Yes  
Contiguous: Yes  
Permitted: Yes  
Wet space: No  
Addition: No  
Conversion: No

**68 Rogers Avenue, Schiller Park, Buffalo, Erie County,  
New York, United States, 14211**

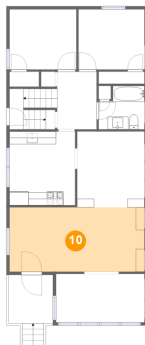
## 9 Floor 2 - Outdoor



Dimensions: 7'0" x 7'7"  
Area: 64 sq. ft  
Counted as living area: No

Heated: No  
Finished: Yes  
Enclosed: No  
Contiguous: Yes  
Permitted: Yes  
Wet space: No  
Addition: No  
Conversion: No

## 10 Floor 2 - Living Room



Dimensions: 21'2" x 10'1"  
Area: 214 sq. ft  
Counted as living area: Yes

Heated: Yes  
Finished: Yes  
Enclosed: Yes  
Contiguous: Yes  
Permitted: Yes  
Wet space: No  
Addition: No  
Conversion: No

## 11 Floor 2 - Hall



Dimensions: 6'2" x 9'0"  
Area: 72 sq. ft  
Counted as living area: Yes

Heated: Yes  
Finished: Yes  
Enclosed: Yes  
Contiguous: Yes  
Permitted: Yes  
Wet space: No  
Addition: No  
Conversion: No



68 Rogers Avenue, Schiller Park, Buffalo, Erie County,  
New York, United States, 14211

**12** Floor 2 - Entry



Dimensions: 2'2" x 6'4"  
Area: 29 sq. ft  
Counted as living area: Yes

Heated: Yes  
Finished: Yes  
Enclosed: Yes  
Contiguous: Yes  
Permitted: Yes  
Wet space: No  
Addition: No  
Conversion: No

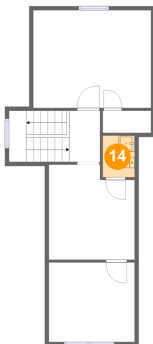
**13** Floor 3 - Bedroom



Dimensions: 10'8" x 11'10"  
Area: 118 sq. ft  
Counted as living area: Yes

Heated: Yes  
Finished: Yes  
Enclosed: Yes  
Contiguous: Yes  
Permitted: Yes  
Wet space: No  
Addition: No  
Conversion: No

**14** Floor 3 - Bath

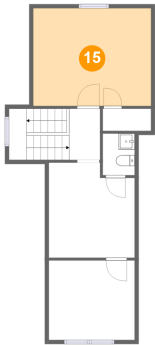


Dimensions: 4'0" x 5'2"  
Area: 21 sq. ft  
Counted as living area: Yes

Heated: Yes  
Finished: Yes  
Enclosed: Yes  
Contiguous: Yes  
Permitted: Yes  
Wet space: Yes  
Addition: No  
Conversion: No

68 Rogers Avenue, Schiller Park, Buffalo, Erie County,  
New York, United States, 14211

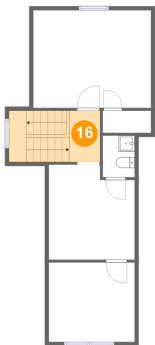
**15** Floor 3 - Bedroom



Dimensions: 14'8" x 12'2"  
Area: 178 sq. ft  
Counted as living area: Yes

Heated: Yes  
Finished: Yes  
Enclosed: Yes  
Contiguous: Yes  
Permitted: Yes  
Wet space: No  
Addition: No  
Conversion: No

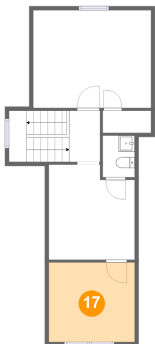
**16** Floor 3 - Hall



Dimensions: 3'10" x 6'4"  
Area: 72 sq. ft  
Counted as living area: Yes

Heated: Yes  
Finished: Yes  
Enclosed: Yes  
Contiguous: Yes  
Permitted: Yes  
Wet space: No  
Addition: No  
Conversion: No

**17** Floor 3 - Room



Dimensions: 10'8" x 9'11"  
Area: 105 sq. ft  
Counted as living area: Yes

Heated: Yes  
Finished: Yes  
Enclosed: Yes  
Contiguous: Yes  
Permitted: Yes  
Wet space: No  
Addition: No  
Conversion: No