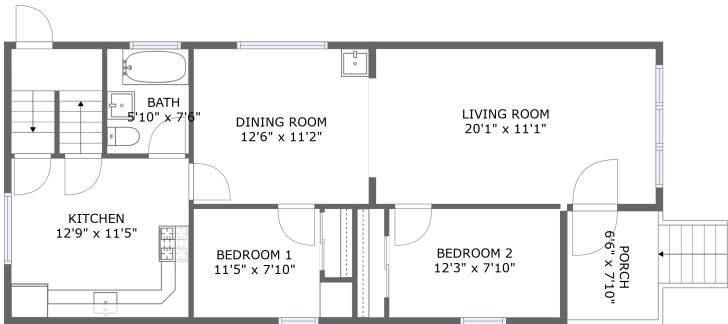
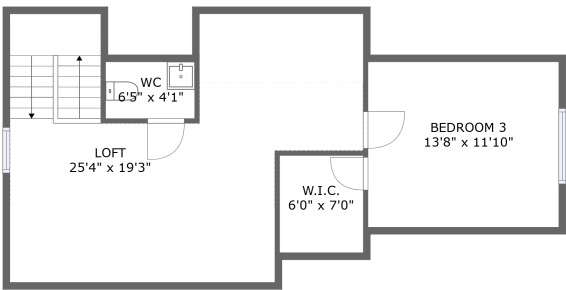


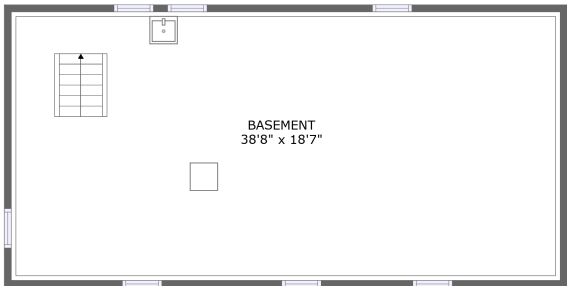
125 Zelmer Street, Schiller Park, Buffalo, Erie County,
New York, United States, 14211



FLOOR 2



FLOOR 3



FLOOR 1

Property summary



0
Garages



3
Bedrooms



1
Bathrooms



0
Half baths



3
Floors

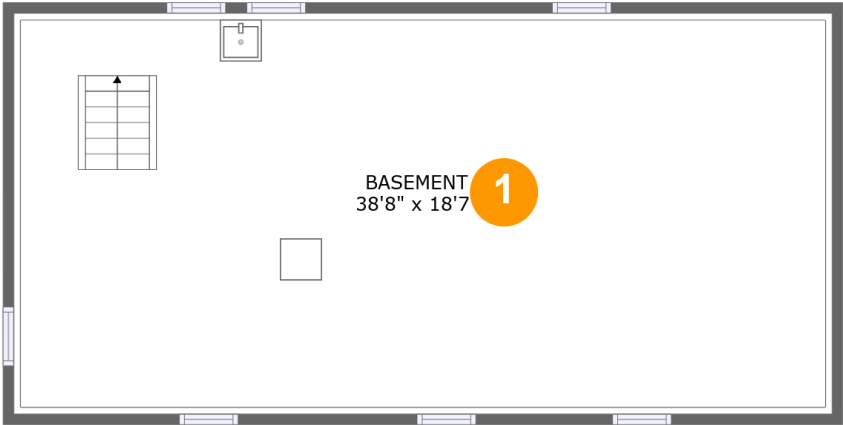


1,302
Gross living
area sqft



2,467
Total sqft

125 Zelmer Street, Schiller Park, Buffalo, Erie County,
New York, United States, 14211

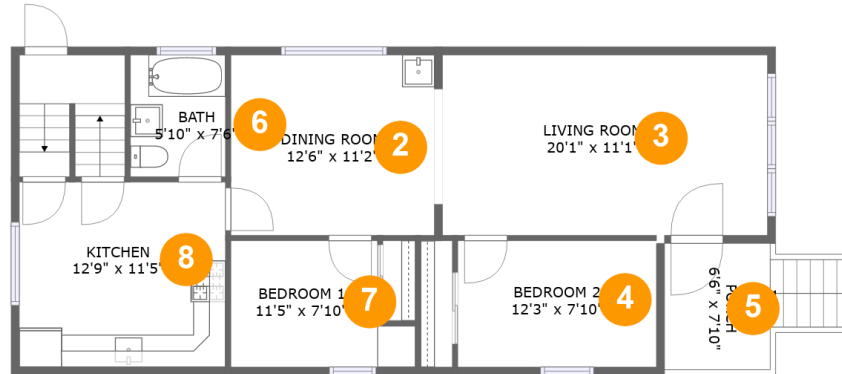


Room dimensions

Floor 1 Total sqft: 817 Living area: 0

#		Dimensions	sqft	Counted as living area
1	Basement	38'8" x 18'7"	758 sq. ft	No

**125 Zelmer Street, Schiller Park, Buffalo, Erie County,
New York, United States, 14211**



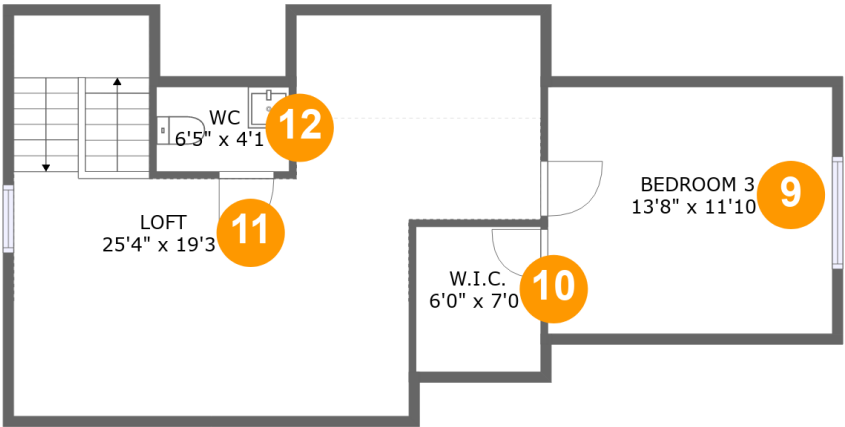
Room dimensions

Floor 2

Total sqft: 971 Living area: 900

#		Dimensions	sqft	Counted as living area
2	Dining Room	12'6" x 11'2"	140 sq. ft	Yes
3	Living Room	20'1" x 11'1"	223 sq. ft	Yes
4	Bedroom 2	12'3" x 7'10"	96 sq. ft	Yes
5	Porch	6'6" x 7'10"	71 sq. ft	No
6	Bath	5'10" x 7'6"	44 sq. ft	Yes
7	Bedroom 1	11'5" x 7'10"	77 sq. ft	Yes
8	Kitchen	12'9" x 11'5"	145 sq. ft	Yes

125 Zelmer Street, Schiller Park, Buffalo, Erie County,
New York, United States, 14211



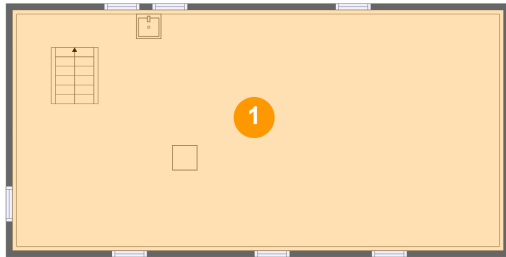
Room dimensions

Floor 3 Total sqft: 679 Living area: 402

#		Dimensions	sqft	Counted as living area
9	Bedroom 3	13'8" x 11'10"	122 sq. ft	Yes
10	W.I.C.	6'0" x 7'0"	22 sq. ft	Yes
11	Loft	25'4" x 19'3"	212 sq. ft	Yes
12	WC	6'5" x 4'1"	17 sq. ft	Yes

**125 Zelmer Street, Schiller Park, Buffalo, Erie County,
New York, United States, 14211**

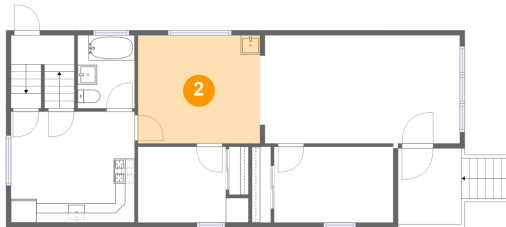
1 Floor 1 - Basement



Dimensions: 38'8" x 18'7"
Area: 758 sq. ft
Counted as living area: No

Heated: No
Finished: No
Enclosed: Yes
Contiguous: Yes
Permitted: Yes
Wet space: No
Addition: No
Conversion: No

2 Floor 2 - Dining Room



Dimensions: 12'6" x 11'2"
Area: 140 sq. ft
Counted as living area: Yes

Heated: Yes
Finished: Yes
Enclosed: Yes
Contiguous: Yes
Permitted: Yes
Wet space: No
Addition: No
Conversion: No

125 Zelmer Street, Schiller Park, Buffalo, Erie County,
New York, United States, 14211

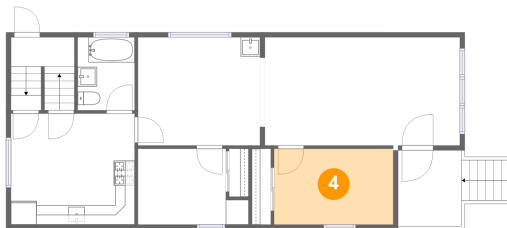
3 Floor 2 - Living Room



Dimensions: 20'1" x 11'1"
Area: 223 sq. ft
Counted as living area: Yes

Heated: Yes
Finished: Yes
Enclosed: Yes
Contiguous: Yes
Permitted: Yes
Wet space: No
Addition: No
Conversion: No

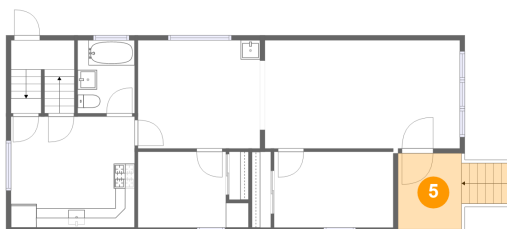
4 Floor 2 - Bedroom 2



Dimensions: 12'3" x 7'10"
Area: 96 sq. ft
Counted as living area: Yes

Heated: Yes
Finished: Yes
Enclosed: Yes
Contiguous: Yes
Permitted: Yes
Wet space: No
Addition: No
Conversion: No

5 Floor 2 - Porch

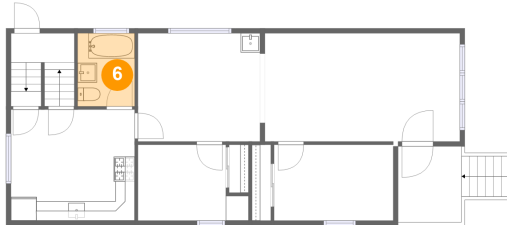


Dimensions: 6'6" x 7'10"
Area: 71 sq. ft
Counted as living area: No

Heated: No
Finished: Yes
Enclosed: No
Contiguous: Yes
Permitted: Yes
Wet space: No
Addition: No
Conversion: No

125 Zelmer Street, Schiller Park, Buffalo, Erie County,
New York, United States, 14211

6 Floor 2 - Bath



Dimensions: 5'10" x 7'6"
Area: 44 sq. ft
Counted as living area: Yes

Heated: Yes
Finished: Yes
Enclosed: Yes
Contiguous: Yes
Permitted: Yes
Wet space: Yes
Addition: No
Conversion: No

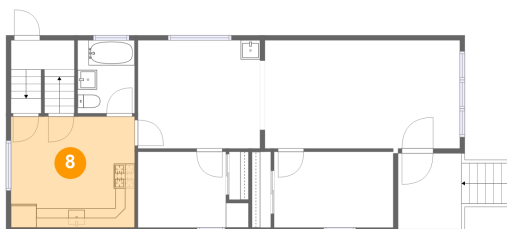
7 Floor 2 - Bedroom 1



Dimensions: 11'5" x 7'10"
Area: 77 sq. ft
Counted as living area: Yes

Heated: Yes
Finished: Yes
Enclosed: Yes
Contiguous: Yes
Permitted: Yes
Wet space: No
Addition: No
Conversion: No

8 Floor 2 - Kitchen

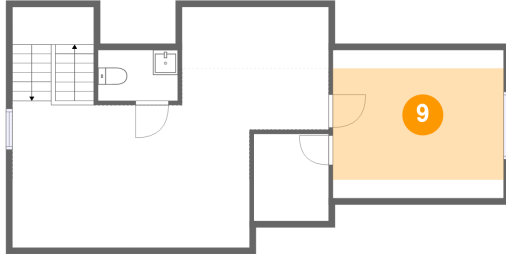


Dimensions: 12'9" x 11'5"
Area: 145 sq. ft
Counted as living area: Yes

Heated: Yes
Finished: Yes
Enclosed: Yes
Contiguous: Yes
Permitted: Yes
Wet space: No
Addition: No
Conversion: No

125 Zelmer Street, Schiller Park, Buffalo, Erie County,
New York, United States, 14211

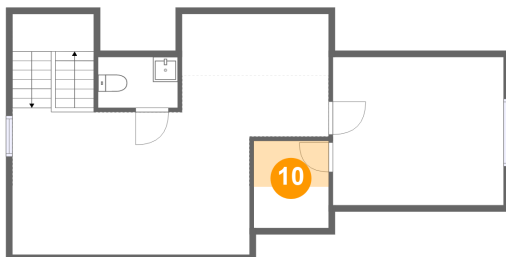
9 Floor 3 - Bedroom 3



Dimensions: 13'8" x 11'10"
Area: 122 sq. ft
Counted as living area: Yes

Heated: Yes
Finished: Yes
Enclosed: Yes
Contiguous: Yes
Permitted: Yes
Wet space: No
Addition: No
Conversion: No

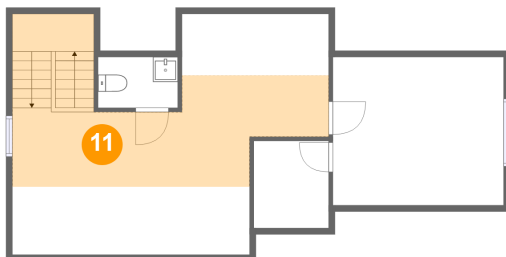
10 Floor 3 - W.I.C.



Dimensions: 6'0" x 7'0"
Area: 22 sq. ft
Counted as living area: Yes

Heated: Yes
Finished: Yes
Enclosed: Yes
Contiguous: Yes
Permitted: Yes
Wet space: No
Addition: No
Conversion: No

11 Floor 3 - Loft

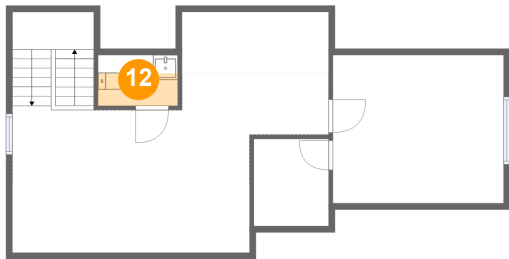


Dimensions: 25'4" x 19'3"
Area: 212 sq. ft
Counted as living area: Yes

Heated: Yes
Finished: Yes
Enclosed: Yes
Contiguous: Yes
Permitted: Yes
Wet space: No
Addition: No
Conversion: No

125 Zelmer Street, Schiller Park, Buffalo, Erie County,
New York, United States, 14211

12 Floor 3 - WC



Dimensions: 6'5" x 4'1"
Area: 17 sq. ft
Counted as living area: Yes

Heated: Yes
Finished: Yes
Enclosed: Yes
Contiguous: Yes
Permitted: Yes
Wet space: Yes
Addition: No
Conversion: No