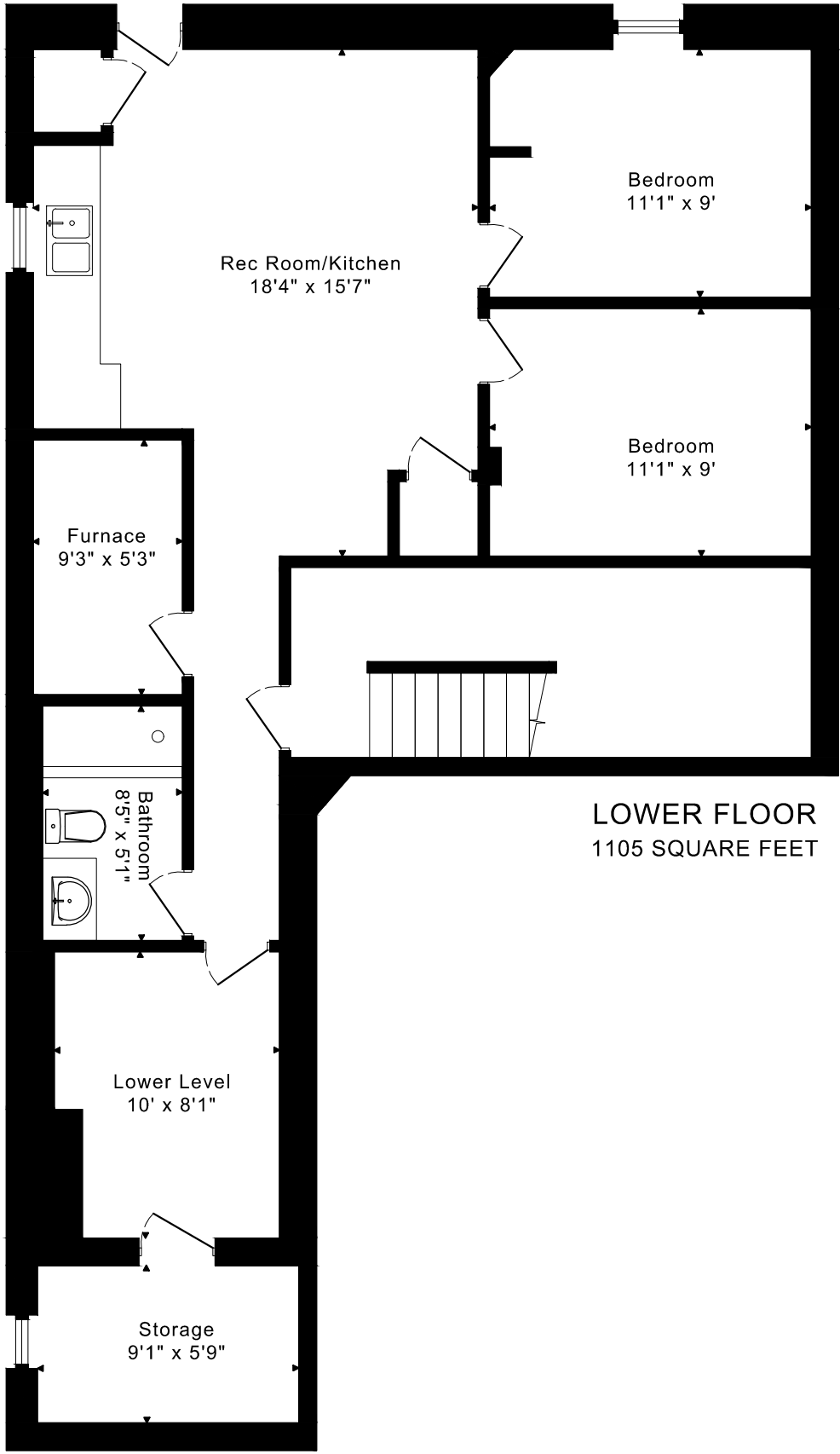
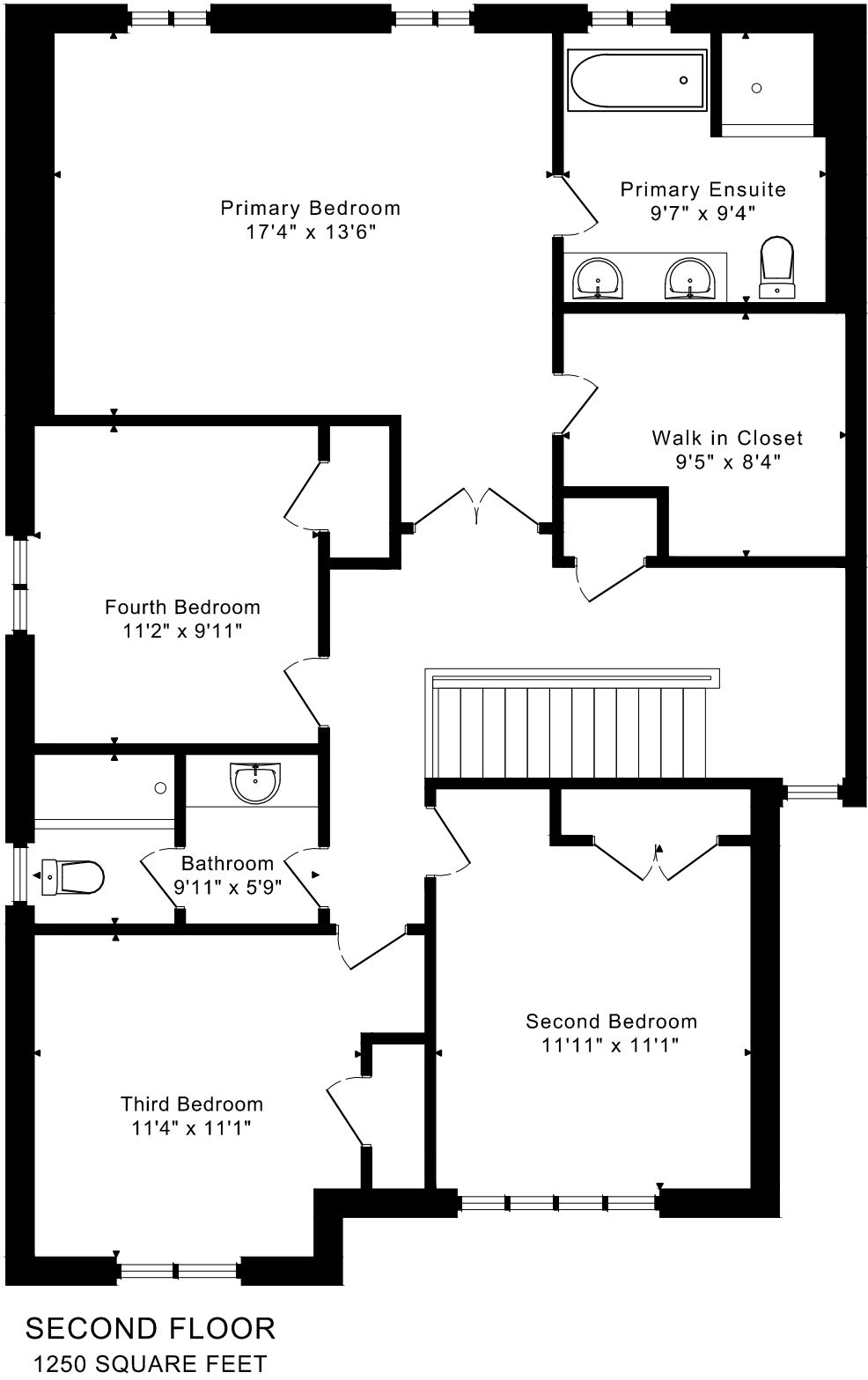
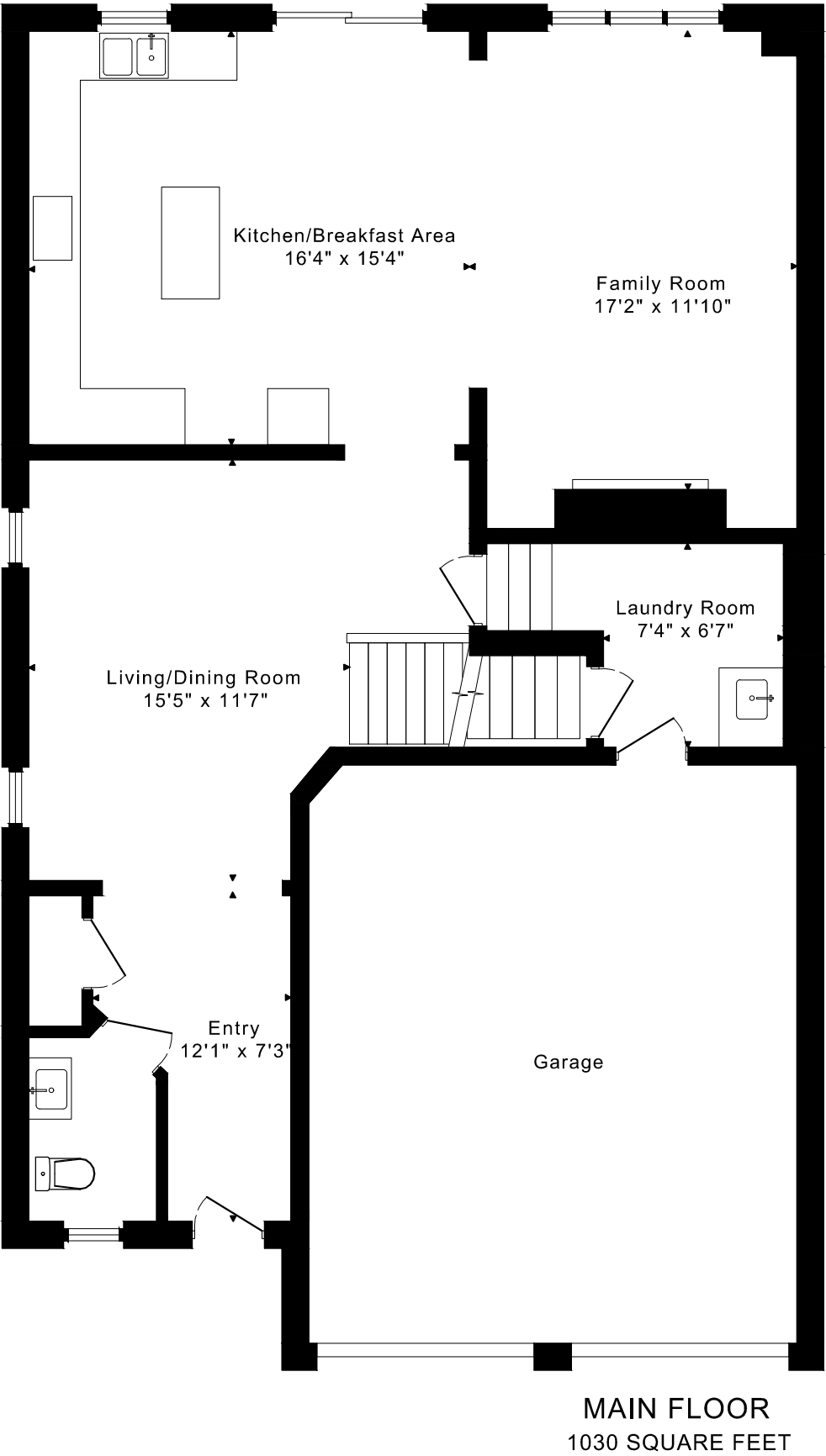


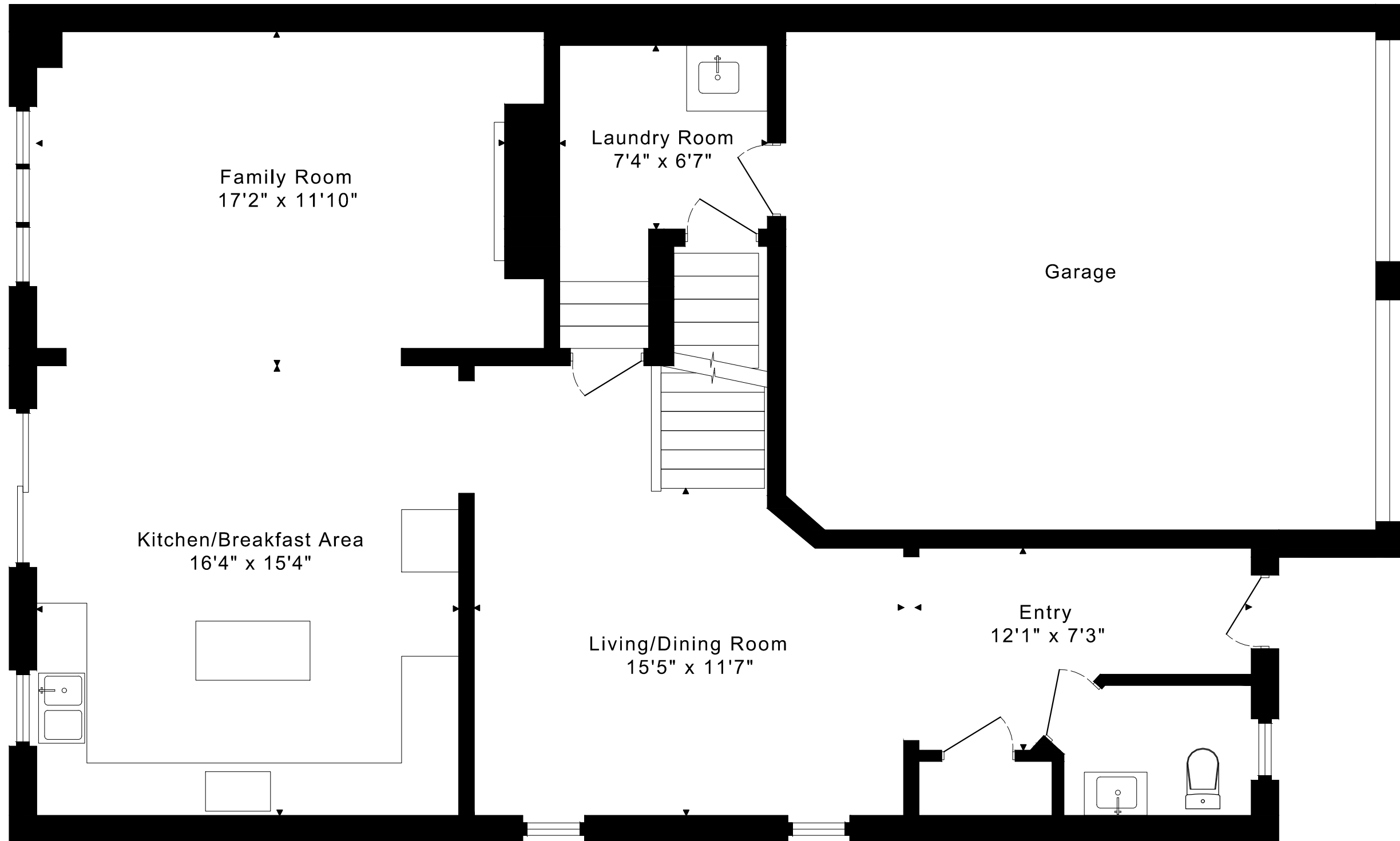
112 THORNDALE ROAD  
FLOOR PLANS



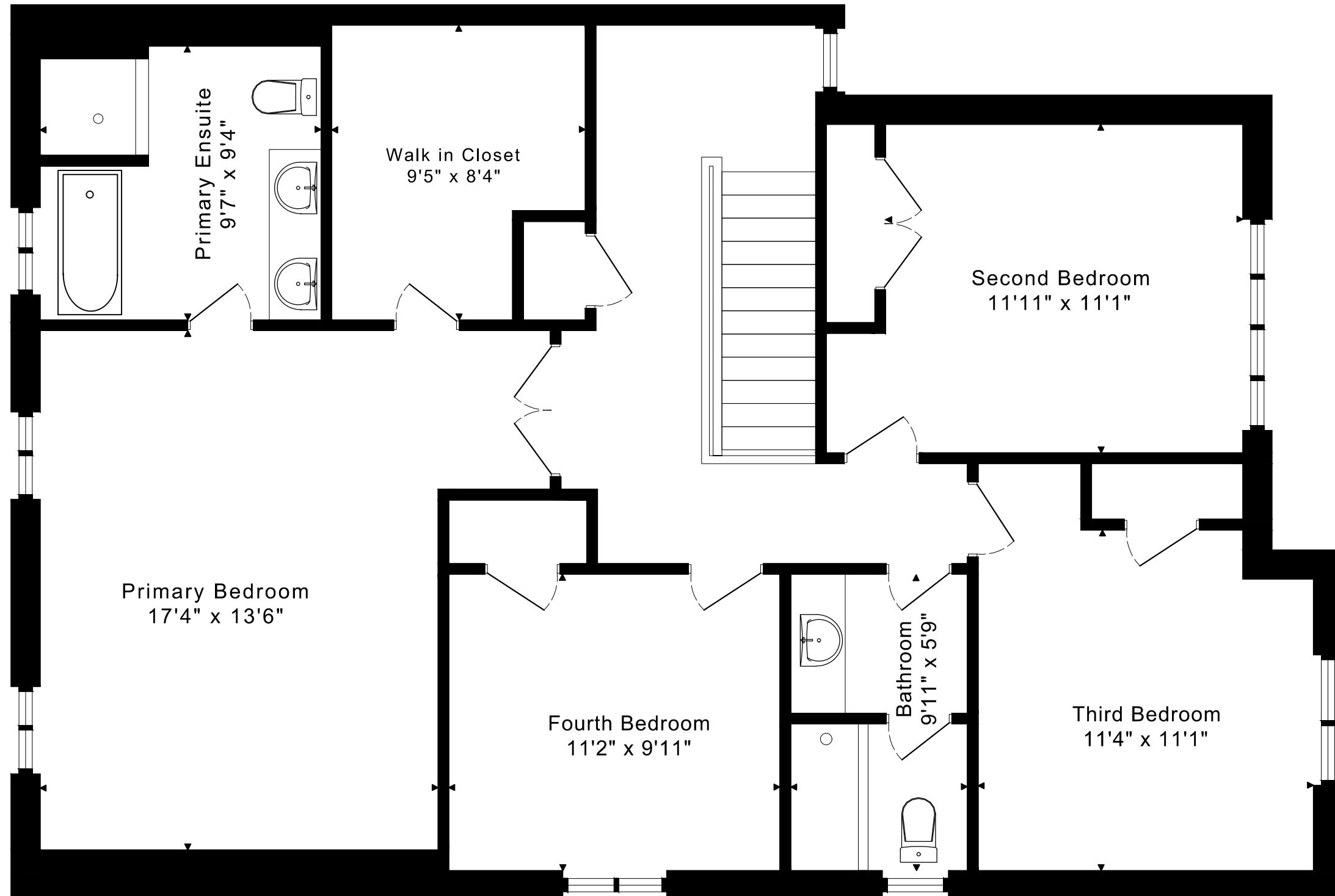
2280 sq ft + 1105 sq ft  
BELOW GRADE

# 112 THORNDALE ROAD FLOOR PLANS

MAIN FLOOR 1030 SQUARE FEET



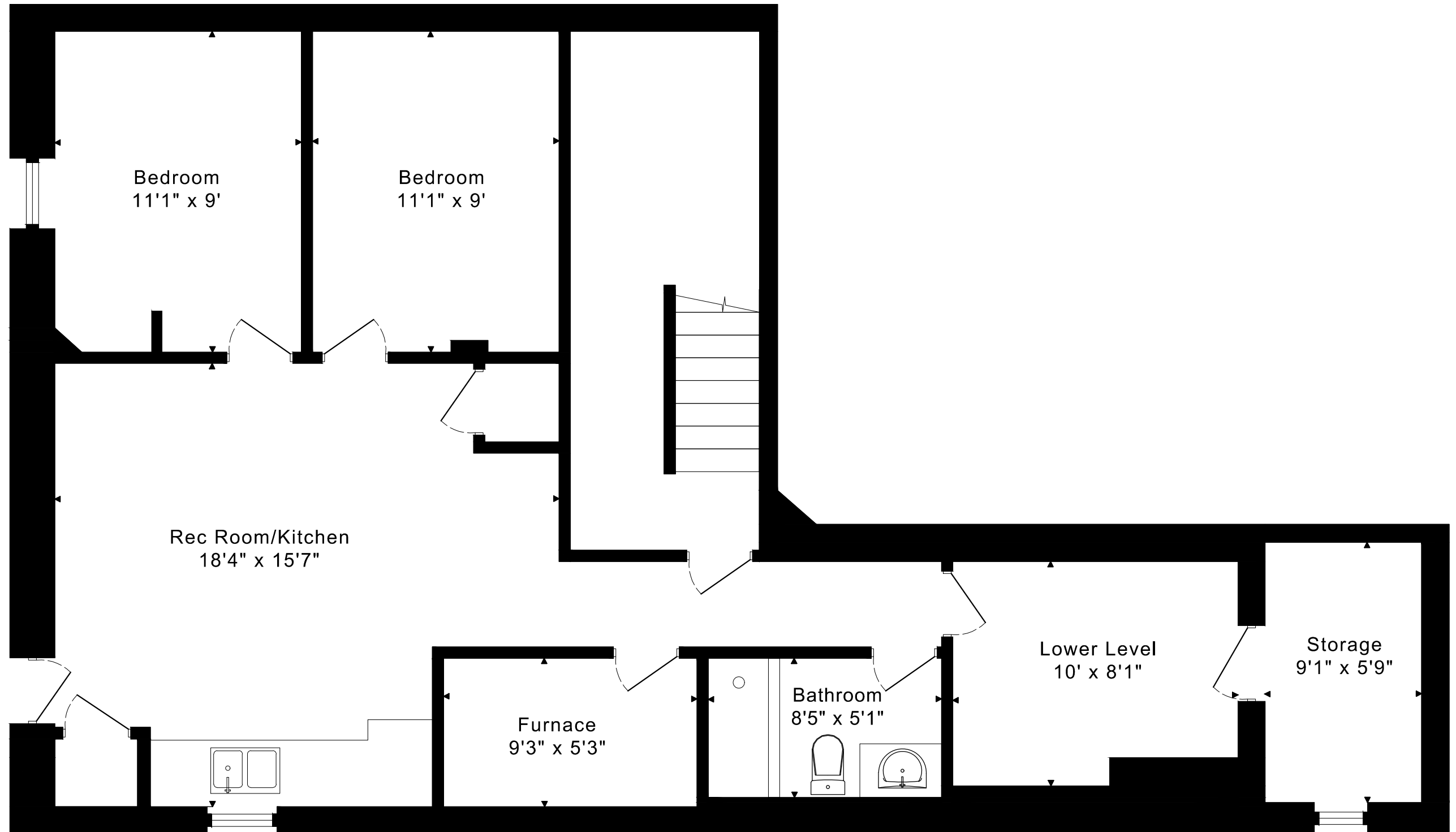
112 THORNDALE ROAD  
FLOOR PLANS  
SECOND FLOOR 1250 SQUARE FEET



# 112 THORNDALE ROAD

## FLOOR PLANS

LOWER FLOOR 1105 SQUARE FEET



# 112 THORNDALE ROAD ROOM MEASUREMENTS

Floor	Room	Imperial						Metric [m]		
		Length		Width		Height		Length	Width	Height
		Feet	Inches	Feet	Inches	Feet	Inches			
Second	Primary Bedroom	17	4	13	6	8	9	5,28	4,11	2,67
	Primary Ensuite	9	7	9	4	8	7	2,92	2,84	2,62
	Walk in Closet	9	5	8	4	9	1	2,87	2,54	2,77
	Second Bedroom	11	11	11	1	9	1	3,63	3,38	2,77
	Third Bedroom	11	4	11	1	9	1	3,45	3,38	2,77
	Fourth Bedroom	11	2	9	11	9	1	3,40	3,02	2,77
	Bathroom	9	11	5	9	9	1	3,02	1,75	2,77
Main	Entry	12	1	7	3	9	2	3,68	2,21	2,79
	Living/Dining Room	15	5	11	7	9	0	4,70	3,53	2,74
	Family Room	17	2	11	10	8	11	5,23	3,61	2,72
	Kitchen/Breakfast Area	16	4	15	4	8	11	4,98	4,67	2,72
	Laundry Room	7	4	6	7	9	7	2,24	2,01	2,92
Lower	Rec Room/Kitchen	18	4	15	7	7	7	5,59	4,75	2,31
	Bedroom	11	1	9	0	7	7	3,38	2,74	2,31
	Bedroom	11	1	9	0	7	7	3,38	2,74	2,31
	Lower Level	10	0	8	1	7	7	3,05	2,46	2,31
	Bathroom	8	5	5	1	7	7	2,57	1,55	2,31
	Storage	9	1	5	9	7	5	2,77	1,75	2,26
	Furnace	9	3	5	3	7	7	2,82	1,60	2,31

The following is a disclaimer regarding the approximate nature of dimensions and floor areas listed in this document:

---

**Disclaimer:**

The dimensions and floor areas listed in this document are provided as an estimate only and are intended to be used for illustration purposes only. These measurements are not necessarily meant to be a perfect representation of the actual space.

**Notes regarding measurement methods and accuracy:**

The utilization of laser measurement technology during the 3D model capturing process at the location provides an accurate representation of floor plans, with a typical margin of error of 3-5%. For the most accurate and official measurement data, it is advised to consult official documents such as MPAC records, builder's pre-construction plans, or data from certified measurement companies.

Exterior wall thickness is included in the calculation of the overall square footage and is considered as a component of the footprint. The wall thickness measurement is obtained onsite whenever possible, or estimated in the event where obtaining onsite measurements is not possible, such as in the case of condominium buildings where wall thickness may vary throughout the building.