



23 New England Road

Maplewood, NJ

www.23newenglandroad.com



VICTORIA
CARTER
GROUP



Classic Charm

A sweeping, covered front porch welcomes visitors to this lovely home.

Inside, the expansive, front-to-back living room boasts a classic wood-burning fireplace with marble hearth and detailed wooden mantel. Set in the three exterior walls, four large windows ensure abundant natural light throughout the day. A broad archway opens to the dining room creating a spacious flow that brightens and expands both rooms. Hardwood floors lead to a landing (with pass-through to the kitchen) before continuing to the second level. A hardwood floor and crown moulding provide just the right finishing touches.

The spacious formal dining room features a hardwood floor, tray ceiling and contemporary chandelier. Three, tall casement windows overlook the front lawn. A doorway opens to the kitchen.

Located off the living room, the powder room includes a hardwood floor, pedestal sink and light bar.

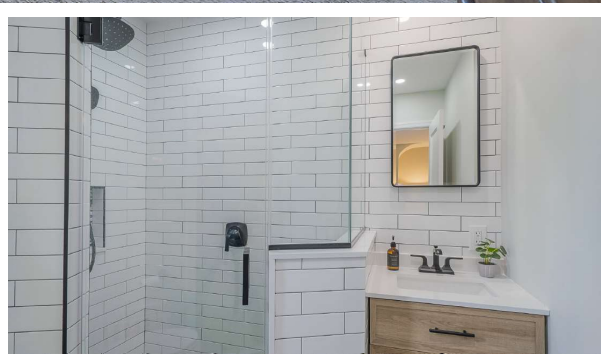
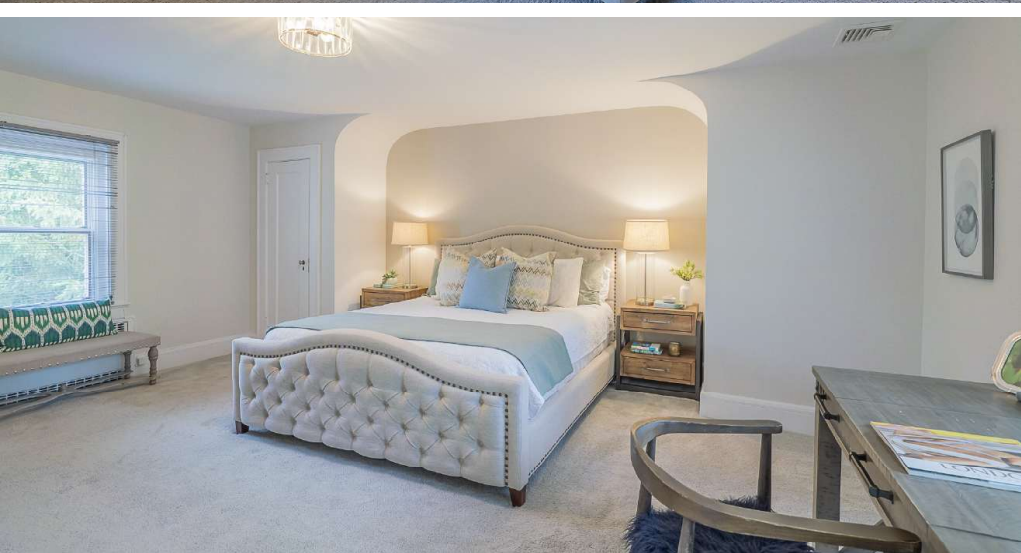




Inviting Warmth

The gourmet, eat-in kitchen is sure to please even the most serious home chef. Shaker cabinets, with crown moulding, give way to deep granite counter tops and a subway tile backsplash. Stainless steel appliances include an LG, five burner, gas range; built-in LG microwave; Bosch dishwasher; and LG refrigerator with cafe doors, freezer drawer and water and ice dispenser. The spacious breakfast area includes wrap around banquette and two pendant light fixtures. A door to the expansive rear patio helps to make indoor/outdoor entertaining a convenient pleasure. Doorways also lead to the dining room, stairway to the second level (with pass-through to the living room) and stairs to the lower level. A hardwood floor, beadboard wainscoting, pantry closet, recessed lighting and three windows overlooking the patio complete the room.





Individual Escapes

Situated on the second level, the primary suite is composed of a very spacious bedroom and private bath. The front-to-back bedroom includes neutral wall-to-wall carpeting, two closets and overhead lighting. Large windows on the front and rear walls provide comfortable cross breezes. The updated, en suite bath is equipped with a tile floor, subway tile walls, glass-enclosed shower with subway tile surround and rain-maker and hand-held shower heads, built-in vanity with undermounted sink, medicine cabinet, wall mirror and recessed lighting.

Situated to the front of the home, bedroom two features a hardwood floor, walk-in closet with built-in storage, two wall sconces and windows on the front and side walls.

Bedroom three presents neutral wall-to wall carpeting, a shiplap accent wall, closet, wall sconce and a pair of windows overlooking the backyard.

The full hall bath offers a tile floor, shower-over-tub with tile surround, built-in vanity with quartz counter top and undermounted sink, wall mirror, shiplap accent wall and recessed lighting.

A center foyer with hardwood floor, linen closet, overhead light fixture and enclosed staircase leading to the attic completes this level



Highlights

GENERAL

- Warm and inviting, seven-room colonial in a highly desirable residential neighborhood
- Gourmet, eat-in kitchen with granite counter tops and stainless steel appliances
- Three bedrooms including a primary suite
- Two full baths, one half-bath
- Wood-burning fireplace in living room
- Hardwood floors
- Thermal windows
- Central air-conditioning
- Neutral palette throughout
- Stone rear patio
- Attached one-car garage
- Convenient to town, parks and schools
- Jitney service from stop directly across street to station with Midtown Direct train service into New York City
- Fenced, level lot, ideal for children

FIRST LEVEL

- Front-to-back formal living room; hardwood floor; wood-burning fireplace with marble hearth and detailed wooden mantel; dentil crown moulding; recessed lighting; double-hung window, front; two double-hung windows, side; double-hung window, rear; archway to dining room; hardwood stairs (with pass-through to kitchen) to second level
- Formal dining room: hardwood floor; tray ceiling; contemporary chandelier; picture window, two casement windows, front; archway to living room; open doorway to kitchen
- Gourmet, eat-in kitchen: hardwood floor; beadboard wainscoting; Shaker cabinets with crown moulding; granite counter tops; subway tile backsplash; LG, five burner, gas range; built-in LG microwave; Bosch dishwasher; LG refrigerator with cafe doors, freezer drawer and water and ice dispenser; stainless steel double sink; breakfast area with wrap-around banquette; pantry closet; recessed lighting; two pendant light fixtures in breakfast area; picture window, two casement windows, rear; open doorways to dining room and stairway to second level (with pass-through to living room); doorway to stairs to lower level; egress to rear patio
- Powder room: hardwood floor; pedestal sink; wall mirror; wall sconce

SECOND LEVEL

- Bedroom one (Primary Suite): neutral wall-to-wall carpeting; two closets (one with built-in storage); overhead light fixture; access to full, private bath; two double-hung windows, front; double-hung window, rear
- Full en suite bath (Primary Suite): tile floor; subway tile walls; glass-enclosed shower with subway tile surround and rainmaker and hand-held

- shower heads; built-in vanity with undermounted sink; medicine cabinet; wall mirror; recessed lighting; casement window, front
- Bedroom two: hardwood floor; walk-in closet with built-in storage; two wall sconces; double-hung window, front; double-hung window, side
- Bedroom three: neutral wall-to-wall carpet; shiplap accent wall; walk-in closet with built-in storage; wall sconce; two double-hung windows, rear
- Full hall bath: tile floor; shower-over-tub with subway tile surround; built-in vanity with quartz counter top and undermounted sink; wall mirror; shiplap accent wall; recessed lighting
- Center foyer: hardwood floor; linen closet; overhead light fixture; stairs to attic

THIRD LEVEL

- Walk-up attic: two closets

LOWER LEVEL

- Large, unfinished storage/play room; overhead fluorescent lighting; door to stairs with egress to back yard
- Laundry: LG washer and dryer;

- double utility sink
- Storage/utility room

EXTERIOR

- Vinyl siding
- Covered front porch: stone floor
- Brick front walkway
- Rear patio: access to kitchen
- Attached one-car garage; rear entry
- Asphalt driveway with Belgian block curbing
- Deep front lawn
- Decorative plantings
- Deep and level, fully fenced backyard

IMPROVEMENTS

- Installed stone patio – 2024
- Installed new window in bedroom two (Renewal by Anderson) – 2024
- Installed new front door and storm door (Renewal by Anderson with warranty) – 2024
- Installed new back storm door – 2024
- Replaced kitchen sink plumbing and installed a new faucet and cabinet hardware – 2024
- Completely renovated primary and second level full baths – 2023
- Installed new front porch PVC banister and framing – 2022
- Installed new garage door opener – 2022

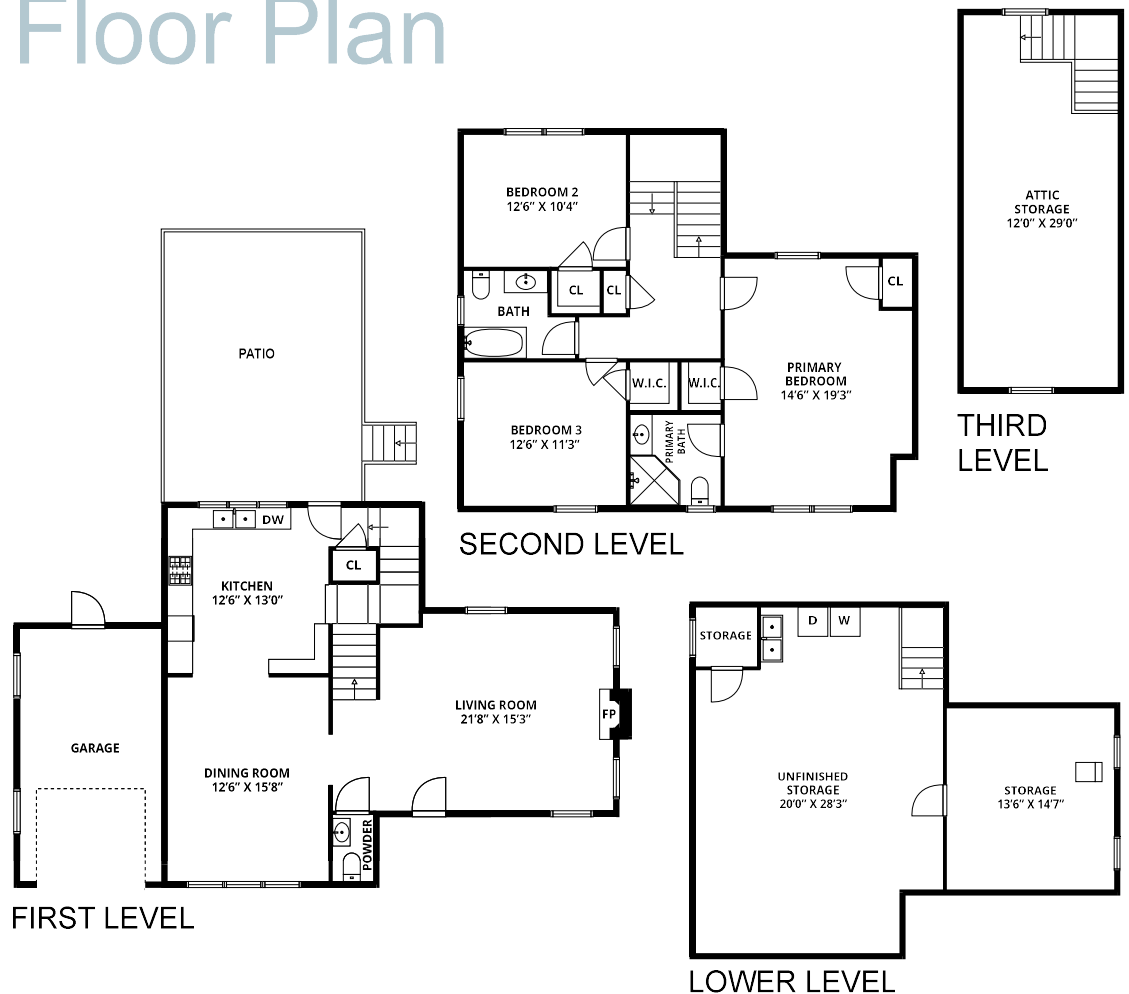
- Installed outdoor GFCI socket in front of house; added sockets with new electric for garage door opener; rewired lights in front bedroom to connect to switch – 2022
- Installed pot lights with dimmer switch in living room – 2022
- Installed new kitchen lights – 2022
- Installed new fence – 2022
- Installed new garage door opener – 2022
- Installed gas line for outdoor grill – 2021
- Replaced silcock/hose spigot – 2021
- Replaced all piping for boiler – 2020
- Replaced sewer pipe liner – 2020

ASSESSMENTS

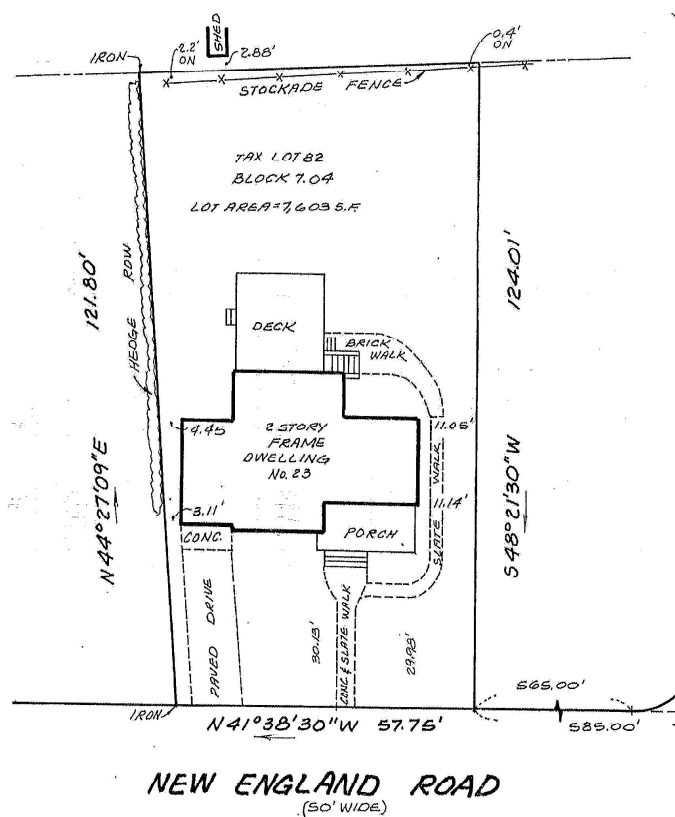
- Land assessment: \$512,300
- Building assessment: \$429,000
- 2024 total assessment: \$941,300
- 2024 taxes: \$21,772



Floor Plan



NOT TO SCALE: Floor plans are for illustration purposes only.
Room positions and dimensions are approximate and should be independently measured for accuracy.



Elisa Bowens
Sales Associate

646-884-1622
elisa@victoriacarter.com
www.victoriacarter.com

Victoria Carter
Broker/Sales Associate

973-220-3050
victoria@victoriavarter.com
www.victoriacarter.com



Weichert, Realtors • Short Hills Office

Weichert