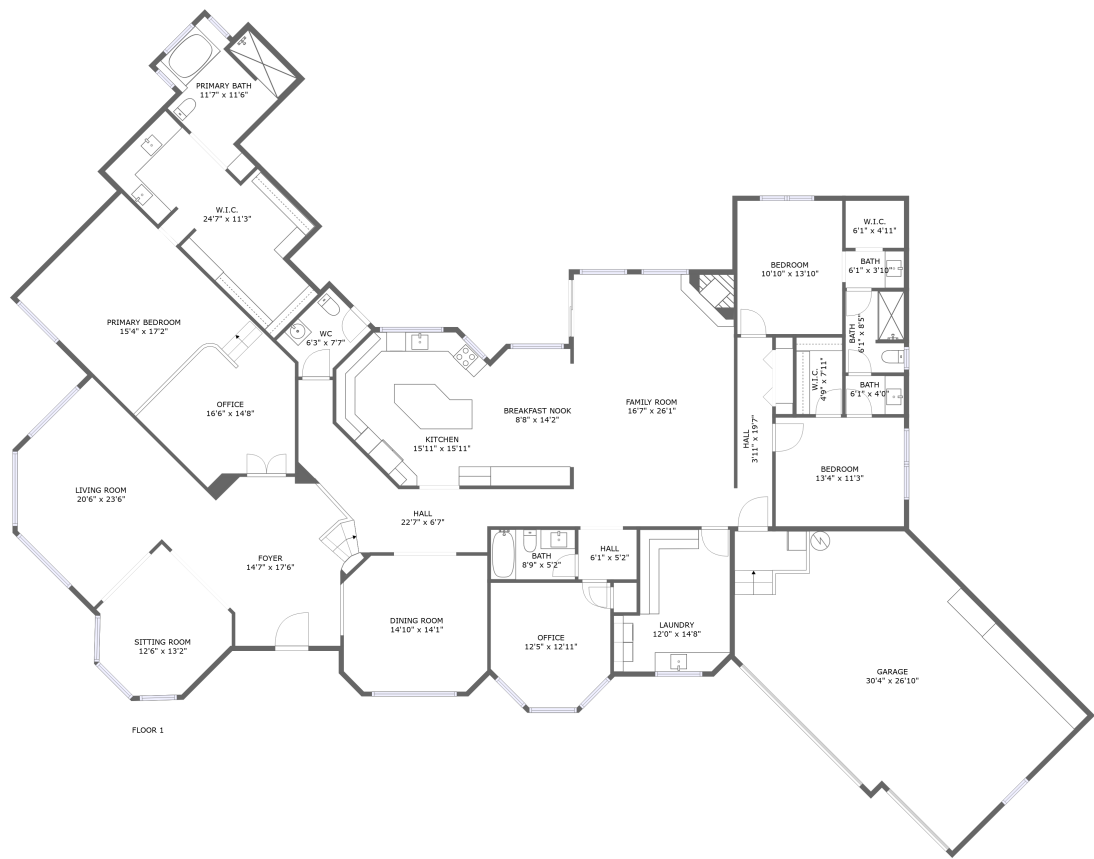




Home report


24200 North Alma School Road, Pinnacle Peak, Scottsdale,  
Maricopa County, Arizona, United States, 85255, Lot 7





Property summary


 **1** Garages


 **3** Bedrooms

 **3** Bathrooms

 **1** Half baths

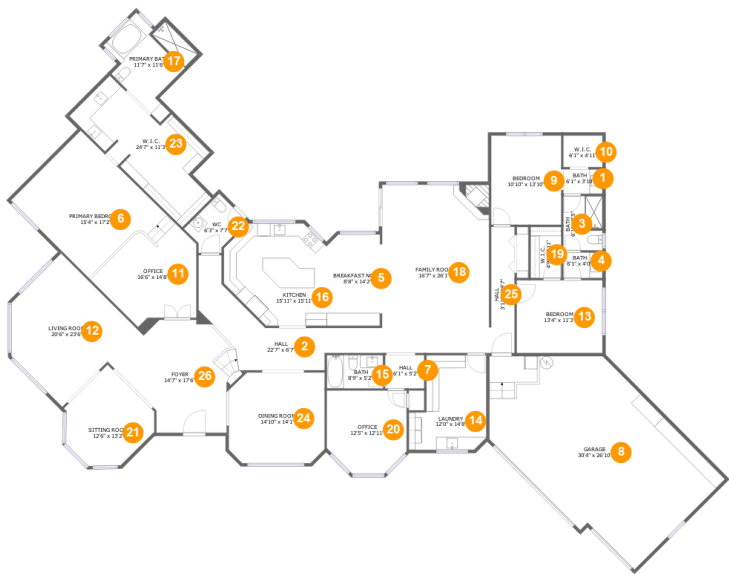
 **1** Floors

 **3,915** Gross living area sqft

 **4,664** Total sqft

Home report

24200 North Alma School Road, Pinnacle Peak, Scottsdale,  
Maricopa County, Arizona, United States, 85255, Lot 7



Room dimensions

Floor 1 Total sqft: 4664    Living area: 3915

#		Max Dimensions	sqft	Included
1	Bath	6'1" x 3'10"	23 sq. ft	Yes
2	Hall	22'7" x 6'7"	187 sq. ft	Yes
3	Bath	6'1" x 8'5"	50 sq. ft	Yes
4	Bath	6'1" x 4'0"	24 sq. ft	Yes
5	Breakfast Nook	8'8" x 14'2"	120 sq. ft	Yes
6	Primary Bedroom	15'4" x 17'2"	267 sq. ft	Yes
7	Hall	6'1" x 5'2"	31 sq. ft	Yes
8	Garage	30'4" x 26'10"	710 sq. ft	No
9	Bedroom	10'10" x 13'10"	150 sq. ft	Yes
10	W.I.C.	6'1" x 4'11"	30 sq. ft	Yes
11	Office	16'6" x 14'8"	187 sq. ft	Yes

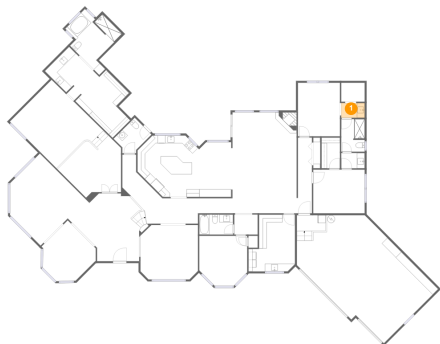
## Home report

**24200 North Alma School Road, Pinnacle Peak, Scottsdale,  
Maricopa County, Arizona, United States, 85255, Lot 7**

#		Max Dimensions	sqft	Included
12	Living Room	20'6" x 23'6"	274 sq. ft	Yes
13	Bedroom	13'4" x 11'3"	150 sq. ft	Yes
14	Laundry	12'0" x 14'8"	151 sq. ft	Yes
15	Bath	8'9" x 5'2"	45 sq. ft	Yes
16	Kitchen	15'11" x 15'11"	218 sq. ft	Yes
17	Primary Bath	11'7" x 11'6"	123 sq. ft	Yes
18	Family Room	16'7" x 26'1"	433 sq. ft	Yes
19	W.I.C.	4'9" x 7'11"	38 sq. ft	Yes
20	Office	12'5" x 12'11"	146 sq. ft	Yes
21	Sitting Room	12'6" x 13'2"	148 sq. ft	Yes
22	WC	6'3" x 7'7"	49 sq. ft	Yes
23	W.I.C.	24'7" x 11'3"	225 sq. ft	Yes
24	Dining Room	14'10" x 14'1"	203 sq. ft	Yes
25	Hall	3'11" x 19'7"	72 sq. ft	Yes
26	Foyer	14'7" x 17'6"	244 sq. ft	Yes

24200 North Alma School Road, Pinnacle Peak, Scottsdale,  
Maricopa County, Arizona, United States, 85255, Lot 7

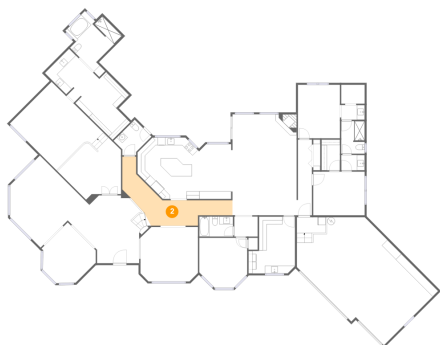
1 Floor 1 - Bath



Max Dimensions: 6'1" x 3'10"  
Calculated Area: 23 sq. ft  
Included: Yes

Heated: Yes  
Finished: Yes  
Enclosed: Yes  
Contiguous: Yes  
Permitted: Yes  
Wet space: Yes  
Addition: No  
Conversion: No

2 Floor 1 - Hall

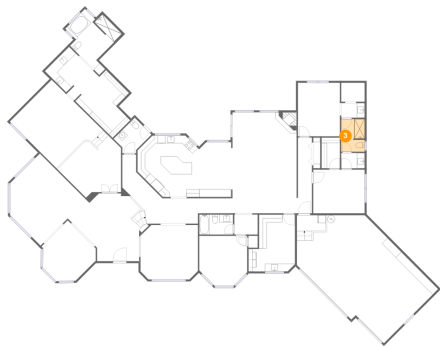


Max Dimensions: 22'7" x 6'7"  
Calculated Area: 187 sq. ft  
Included: Yes

Heated: Yes  
Finished: Yes  
Enclosed: Yes  
Contiguous: Yes  
Permitted: Yes  
Wet space: No  
Addition: No  
Conversion: No

24200 North Alma School Road, Pinnacle Peak, Scottsdale,  
Maricopa County, Arizona, United States, 85255, Lot 7

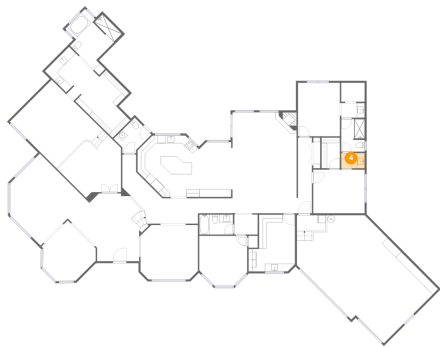
3 Floor 1 - Bath



Max Dimensions: 6'1" x 8'5"  
Calculated Area: 50 sq. ft  
Included: Yes

Heated: Yes  
Finished: Yes  
Enclosed: Yes  
Contiguous: Yes  
Permitted: Yes  
Wet space: Yes  
Addition: No  
Conversion: No

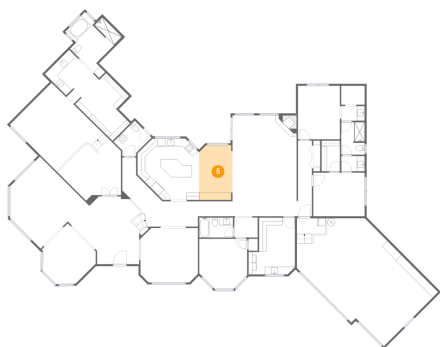
4 Floor 1 - Bath



Max Dimensions: 6'1" x 4'0"  
Calculated Area: 24 sq. ft  
Included: Yes

Heated: Yes  
Finished: Yes  
Enclosed: Yes  
Contiguous: Yes  
Permitted: Yes  
Wet space: Yes  
Addition: No  
Conversion: No

5 Floor 1 - Breakfast Nook

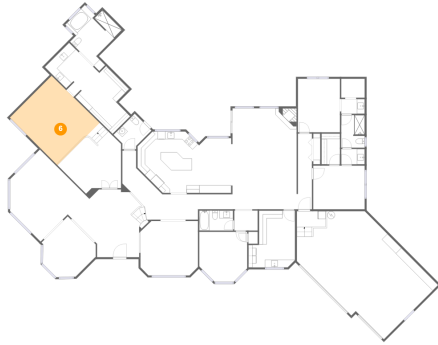


Max Dimensions: 8'8" x 14'2"  
Calculated Area: 120 sq. ft  
Included: Yes

Heated: Yes  
Finished: Yes  
Enclosed: Yes  
Contiguous: Yes  
Permitted: Yes  
Wet space: No  
Addition: No  
Conversion: No

24200 North Alma School Road, Pinnacle Peak, Scottsdale,  
Maricopa County, Arizona, United States, 85255, Lot 7

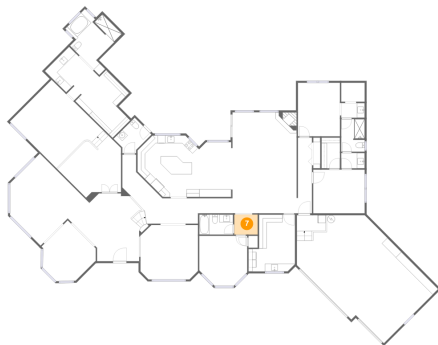
## 6 Floor 1 - Primary Bedroom



Max Dimensions: 15'4" x 17'2"  
Calculated Area: 267 sq. ft  
Included: Yes

Heated: Yes  
Finished: Yes  
Enclosed: Yes  
Contiguous: Yes  
Permitted: Yes  
Wet space: No  
Addition: No  
Conversion: No

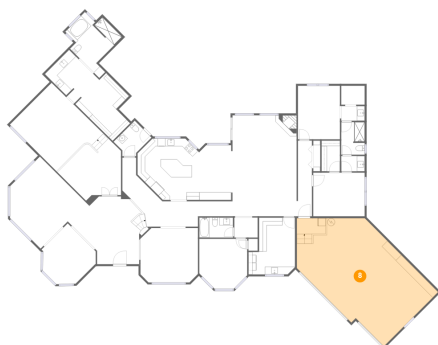
## 7 Floor 1 - Hall



Max Dimensions: 6'1" x 5'2"  
Calculated Area: 31 sq. ft  
Included: Yes

Heated: Yes  
Finished: Yes  
Enclosed: Yes  
Contiguous: Yes  
Permitted: Yes  
Wet space: No  
Addition: No  
Conversion: No

## 8 Floor 1 - Garage

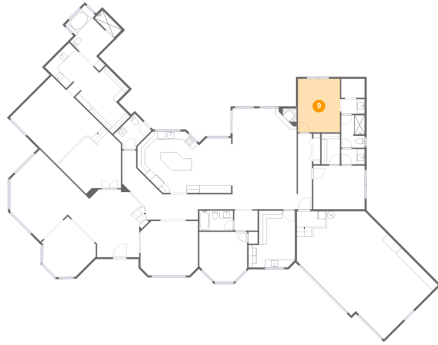


Max Dimensions: 30'4" x 26'10"  
Calculated Area: 710 sq. ft  
Included: No

Heated: No  
Finished: No  
Enclosed: Yes  
Contiguous: Yes  
Permitted: Yes  
Wet space: No  
Addition: No  
Conversion: No

24200 North Alma School Road, Pinnacle Peak, Scottsdale,  
Maricopa County, Arizona, United States, 85255, Lot 7

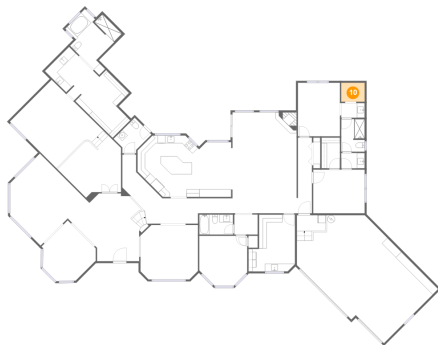
## 9 Floor 1 - Bedroom



Max Dimensions: 10'10" x  
13'10"  
Calculated Area: 150 sq. ft  
Included: Yes

Heated: Yes  
Finished: Yes  
Enclosed: Yes  
Contiguous:  
Yes  
Permitted: Yes  
Wet space: No  
Addition: No  
Conversion: No

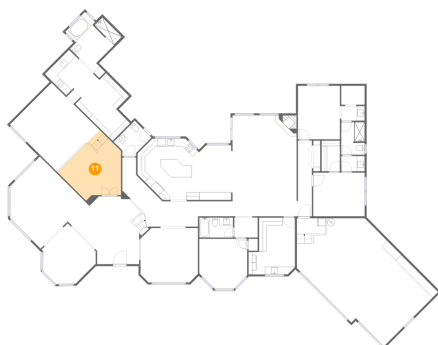
## 10 Floor 1 - W.I.C.



Max Dimensions: 6'1" x  
4'11"  
Calculated Area: 30 sq. ft  
Included: Yes

Heated: Yes  
Finished: Yes  
Enclosed: Yes  
Contiguous:  
Yes  
Permitted: Yes  
Wet space: No  
Addition: No  
Conversion: No

## 11 Floor 1 - Office

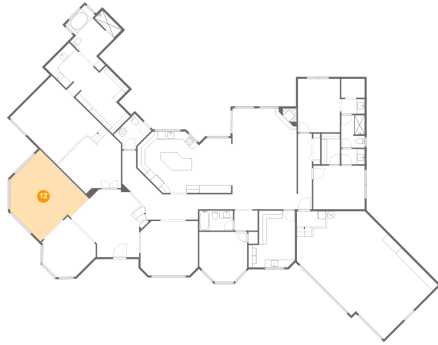


Max Dimensions: 16'6" x  
14'8"  
Calculated Area: 187 sq. ft  
Included: Yes

Heated: Yes  
Finished: Yes  
Enclosed: Yes  
Contiguous:  
Yes  
Permitted: Yes  
Wet space: No  
Addition: No  
Conversion: No

24200 North Alma School Road, Pinnacle Peak, Scottsdale,  
Maricopa County, Arizona, United States, 85255, Lot 7

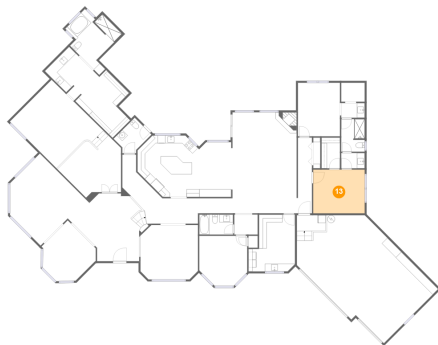
## 12 Floor 1 - Living Room



Max Dimensions: 20'6" x 23'6"  
Calculated Area: 274 sq. ft  
Included: Yes

Heated: Yes  
Finished: Yes  
Enclosed: Yes  
Contiguous: Yes  
Permitted: Yes  
Wet space: No  
Addition: No  
Conversion: No

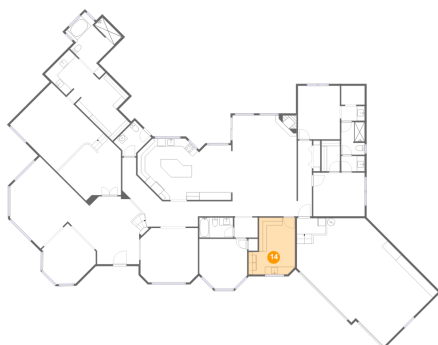
## 13 Floor 1 - Bedroom



Max Dimensions: 13'4" x 11'3"  
Calculated Area: 150 sq. ft  
Included: Yes

Heated: Yes  
Finished: Yes  
Enclosed: Yes  
Contiguous: Yes  
Permitted: Yes  
Wet space: No  
Addition: No  
Conversion: No

## 14 Floor 1 - Laundry



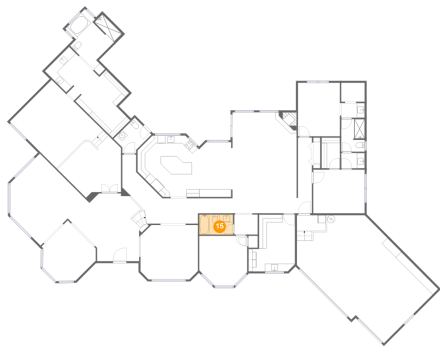
Max Dimensions: 12'0" x 14'8"  
Calculated Area: 151 sq. ft  
Included: Yes

Heated: Yes  
Finished: Yes  
Enclosed: Yes  
Contiguous: Yes  
Permitted: Yes  
Wet space: No  
Addition: No  
Conversion: No



24200 North Alma School Road, Pinnacle Peak, Scottsdale,  
Maricopa County, Arizona, United States, 85255, Lot 7

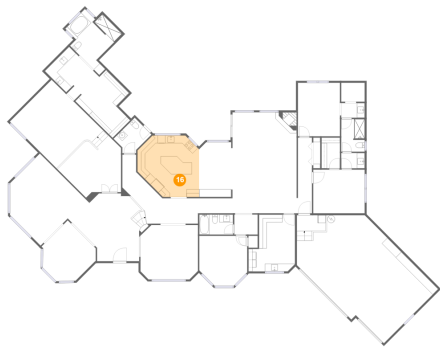
15 Floor 1 - Bath



Max Dimensions: 8'9" x 5'2"  
Calculated Area: 45 sq. ft  
Included: Yes

Heated: Yes  
Finished: Yes  
Enclosed: Yes  
Contiguous: Yes  
Permitted: Yes  
Wet space: Yes  
Addition: No  
Conversion: No

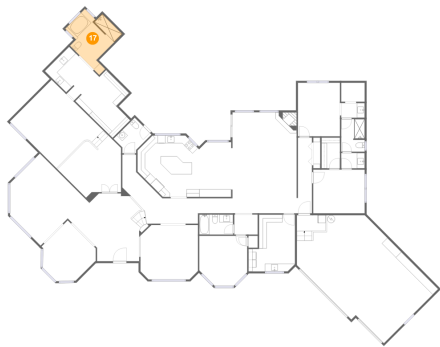
16 Floor 1 - Kitchen



Max Dimensions: 15'11" x 15'11"  
Calculated Area: 218 sq. ft  
Included: Yes

Heated: Yes  
Finished: Yes  
Enclosed: Yes  
Contiguous: Yes  
Permitted: Yes  
Wet space: No  
Addition: No  
Conversion: No

17 Floor 1 - Primary Bath

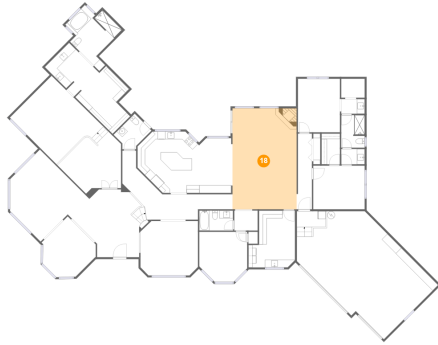


Max Dimensions: 11'7" x 11'6"  
Calculated Area: 123 sq. ft  
Included: Yes

Heated: Yes  
Finished: Yes  
Enclosed: Yes  
Contiguous: Yes  
Permitted: Yes  
Wet space: Yes  
Addition: No  
Conversion: No

24200 North Alma School Road, Pinnacle Peak, Scottsdale,  
Maricopa County, Arizona, United States, 85255, Lot 7

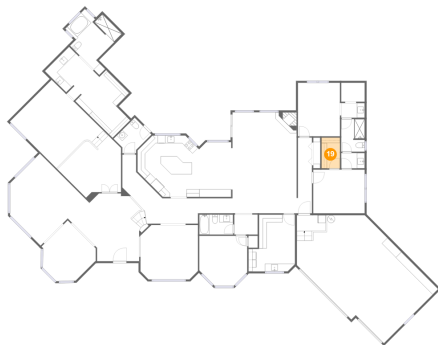
### 18 Floor 1 - Family Room



Max Dimensions: 16'7" x 26'1"  
Calculated Area: 433 sq. ft  
Included: Yes

Heated: Yes  
Finished: Yes  
Enclosed: Yes  
Contiguous: Yes  
Permitted: Yes  
Wet space: No  
Addition: No  
Conversion: No

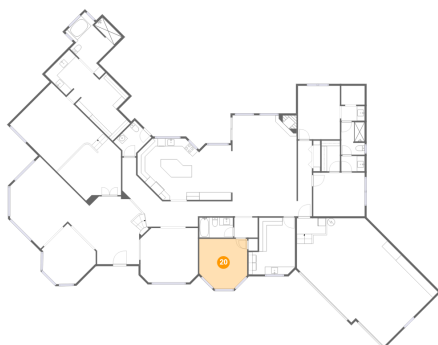
### 19 Floor 1 - W.I.C.



Max Dimensions: 4'9" x 7'11"  
Calculated Area: 38 sq. ft  
Included: Yes

Heated: Yes  
Finished: Yes  
Enclosed: Yes  
Contiguous: Yes  
Permitted: Yes  
Wet space: No  
Addition: No  
Conversion: No

### 20 Floor 1 - Office

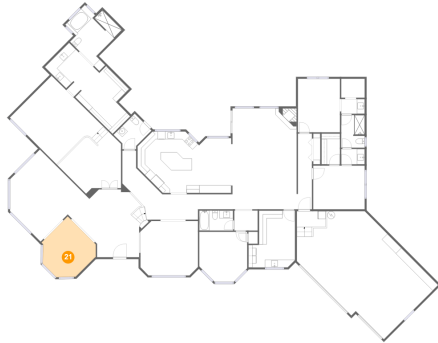


Max Dimensions: 12'5" x 12'11"  
Calculated Area: 146 sq. ft  
Included: Yes

Heated: Yes  
Finished: Yes  
Enclosed: Yes  
Contiguous: Yes  
Permitted: Yes  
Wet space: No  
Addition: No  
Conversion: No

24200 North Alma School Road, Pinnacle Peak, Scottsdale,  
Maricopa County, Arizona, United States, 85255, Lot 7

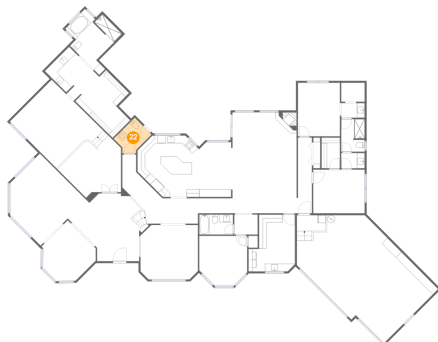
## 21 Floor 1 - Sitting Room



Max Dimensions: 12'6" x 13'2"  
Calculated Area: 148 sq. ft  
Included: Yes

Heated: Yes  
Finished: Yes  
Enclosed: Yes  
Contiguous: Yes  
Permitted: Yes  
Wet space: No  
Addition: No  
Conversion: No

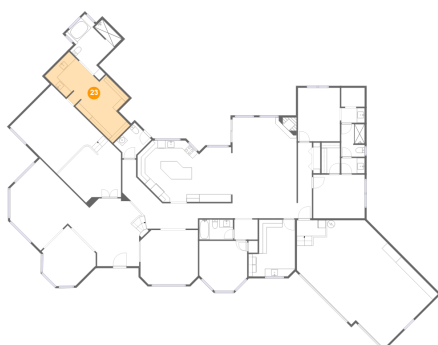
## 22 Floor 1 - WC



Max Dimensions: 6'3" x 7'7"  
Calculated Area: 49 sq. ft  
Included: Yes

Heated: Yes  
Finished: Yes  
Enclosed: Yes  
Contiguous: Yes  
Permitted: Yes  
Wet space: Yes  
Addition: No  
Conversion: No

## 23 Floor 1 - W.I.C.

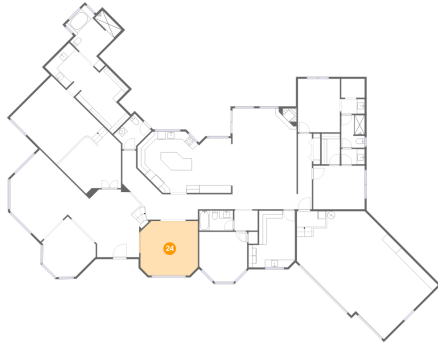


Max Dimensions: 24'7" x 11'3"  
Calculated Area: 225 sq. ft  
Included: Yes

Heated: Yes  
Finished: Yes  
Enclosed: Yes  
Contiguous: Yes  
Permitted: Yes  
Wet space: No  
Addition: No  
Conversion: No

24200 North Alma School Road, Pinnacle Peak, Scottsdale,  
Maricopa County, Arizona, United States, 85255, Lot 7

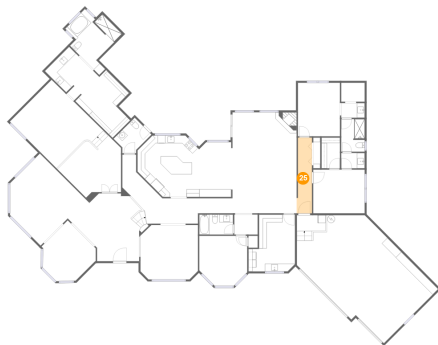
## 24 Floor 1 - Dining Room



Max Dimensions: 14'10" x 14'1"  
Calculated Area: 203 sq. ft  
Included: Yes

Heated: Yes  
Finished: Yes  
Enclosed: Yes  
Contiguous: Yes  
Permitted: Yes  
Wet space: No  
Addition: No  
Conversion: No

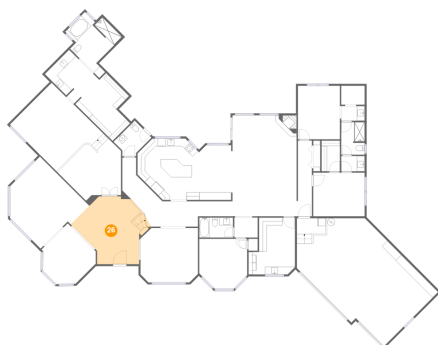
## 25 Floor 1 - Hall



Max Dimensions: 3'11" x 19'7"  
Calculated Area: 72 sq. ft  
Included: Yes

Heated: Yes  
Finished: Yes  
Enclosed: Yes  
Contiguous: Yes  
Permitted: Yes  
Wet space: No  
Addition: No  
Conversion: No

## 26 Floor 1 - Foyer



Max Dimensions: 14'7" x 17'6"  
Calculated Area: 244 sq. ft  
Included: Yes

Heated: Yes  
Finished: Yes  
Enclosed: Yes  
Contiguous: Yes  
Permitted: Yes  
Wet space: No  
Addition: No  
Conversion: No