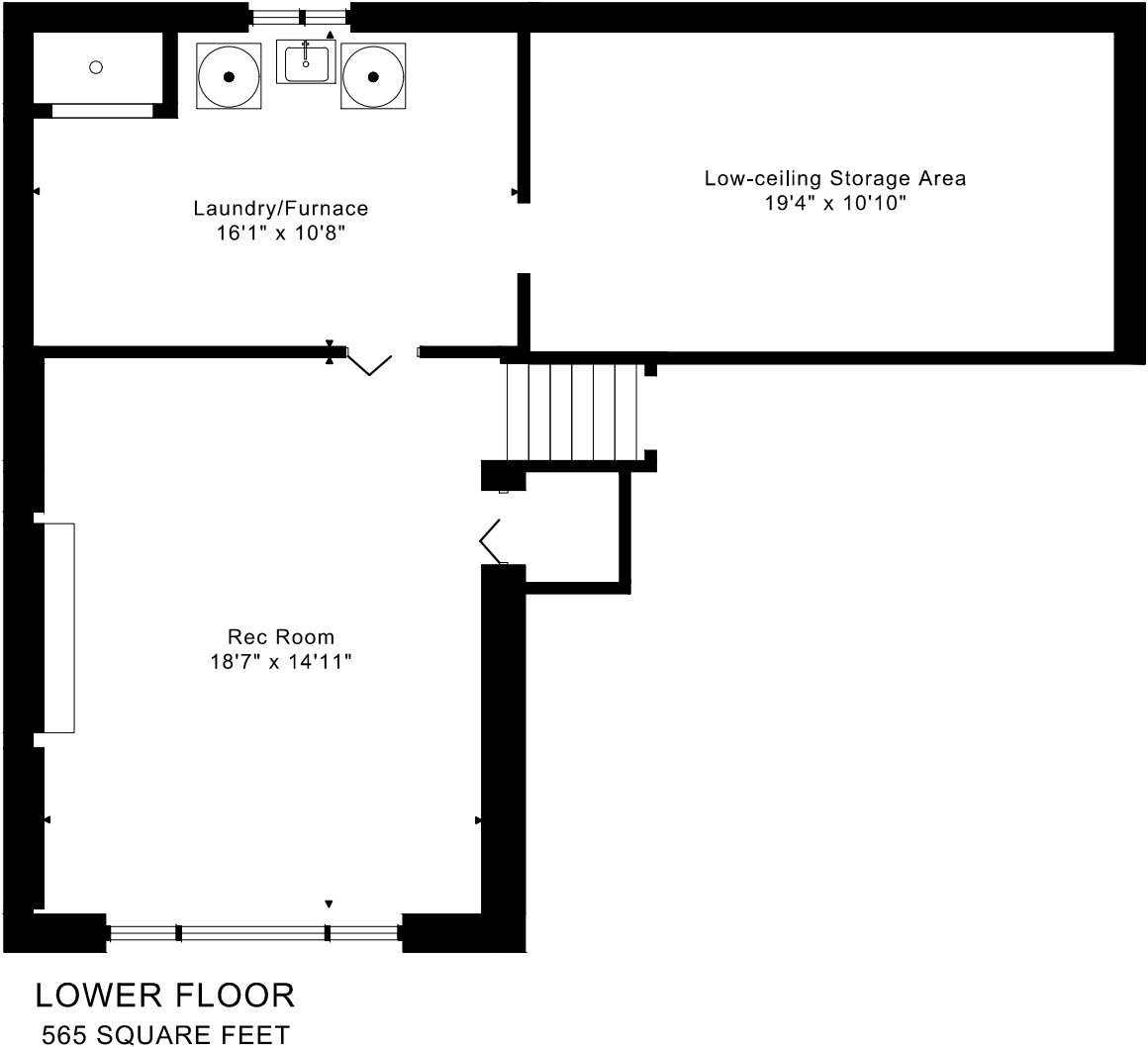
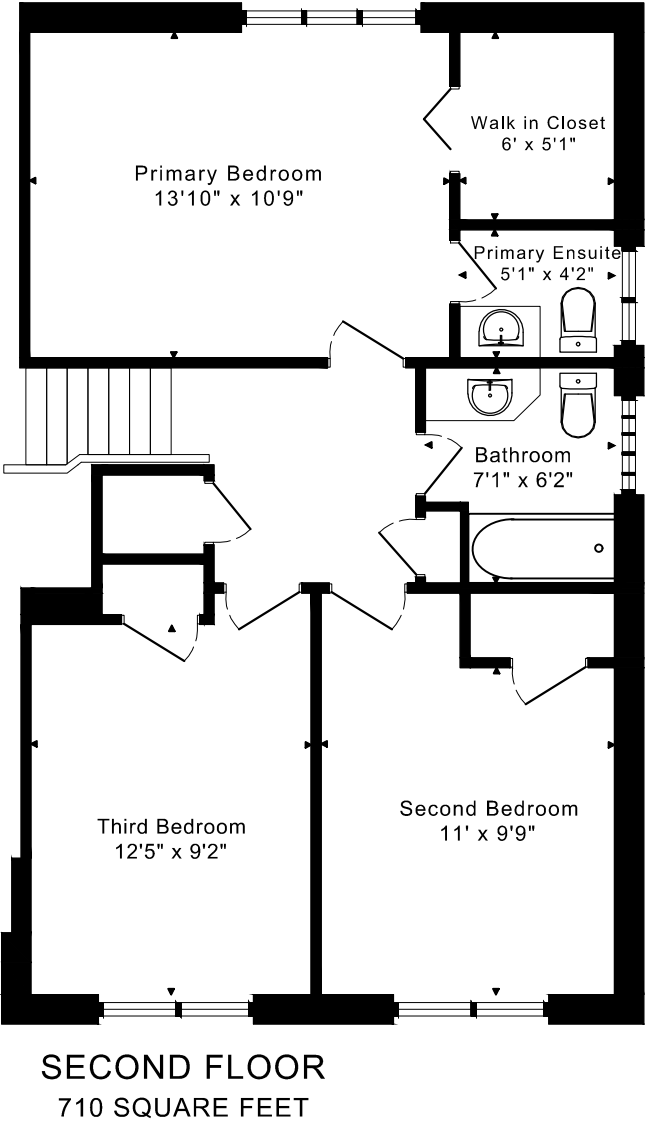
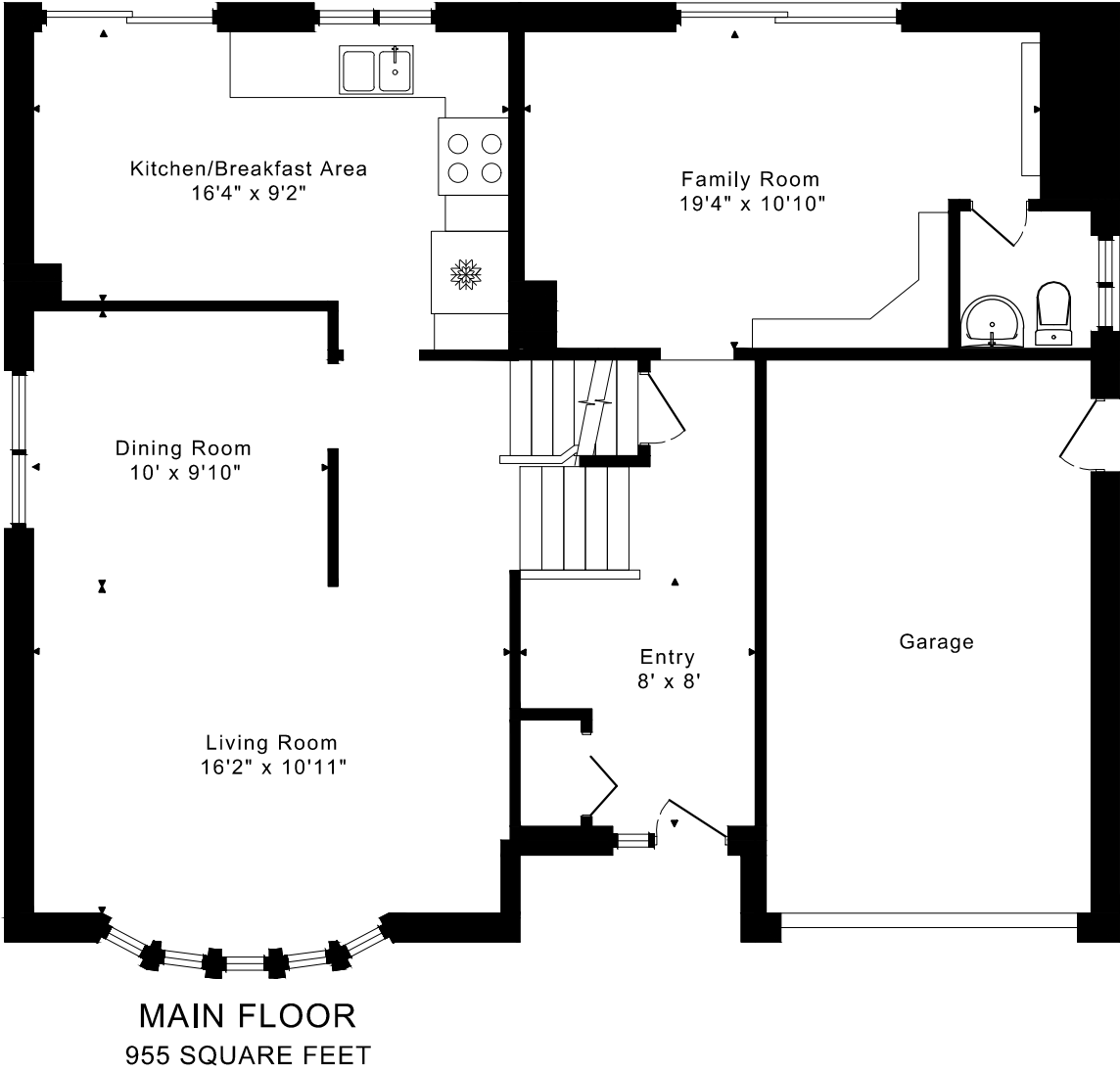
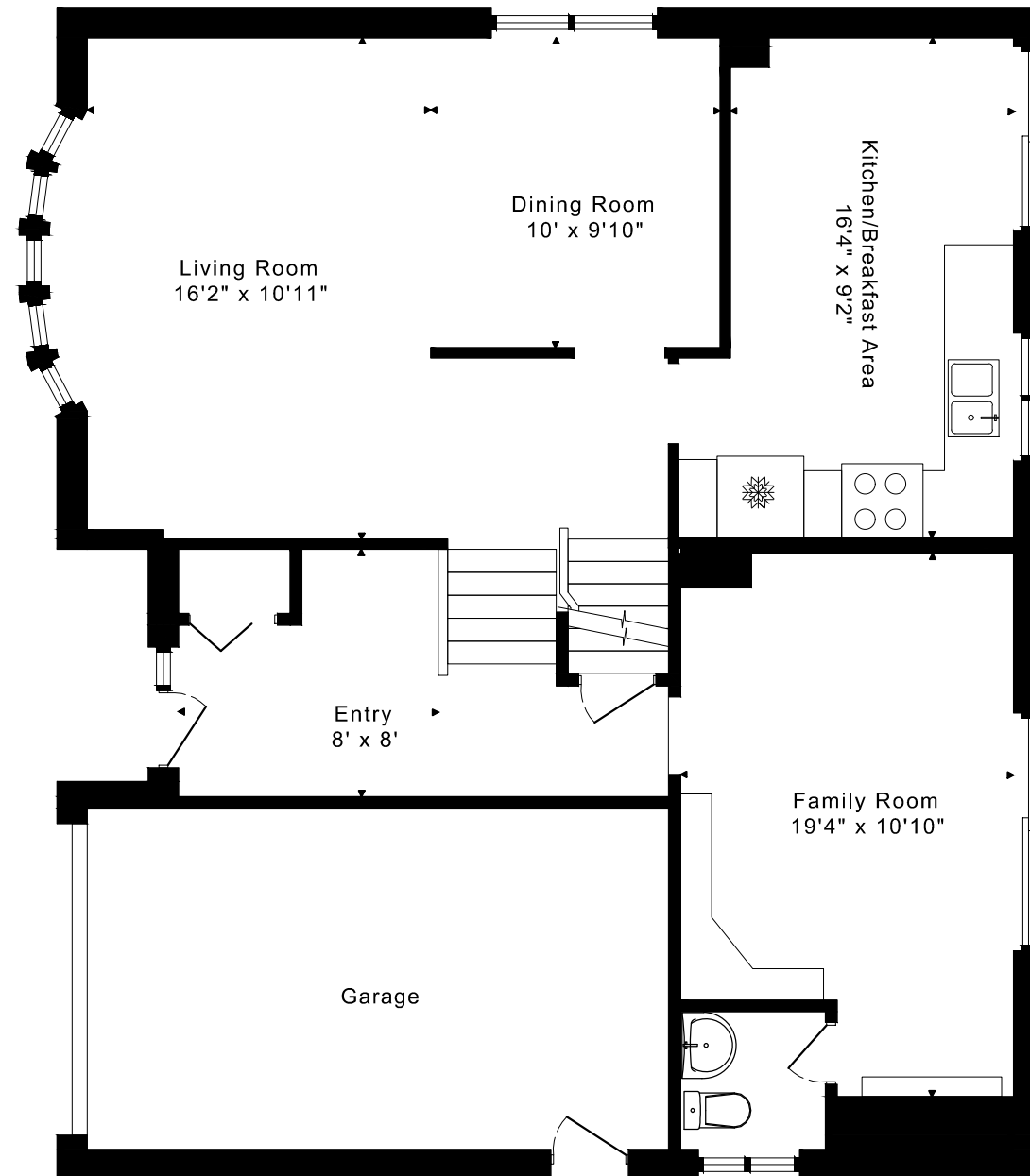


1454 LEDA AVENUE
FLOOR PLANS



1454 LEDA AVENUE FLOOR PLANS

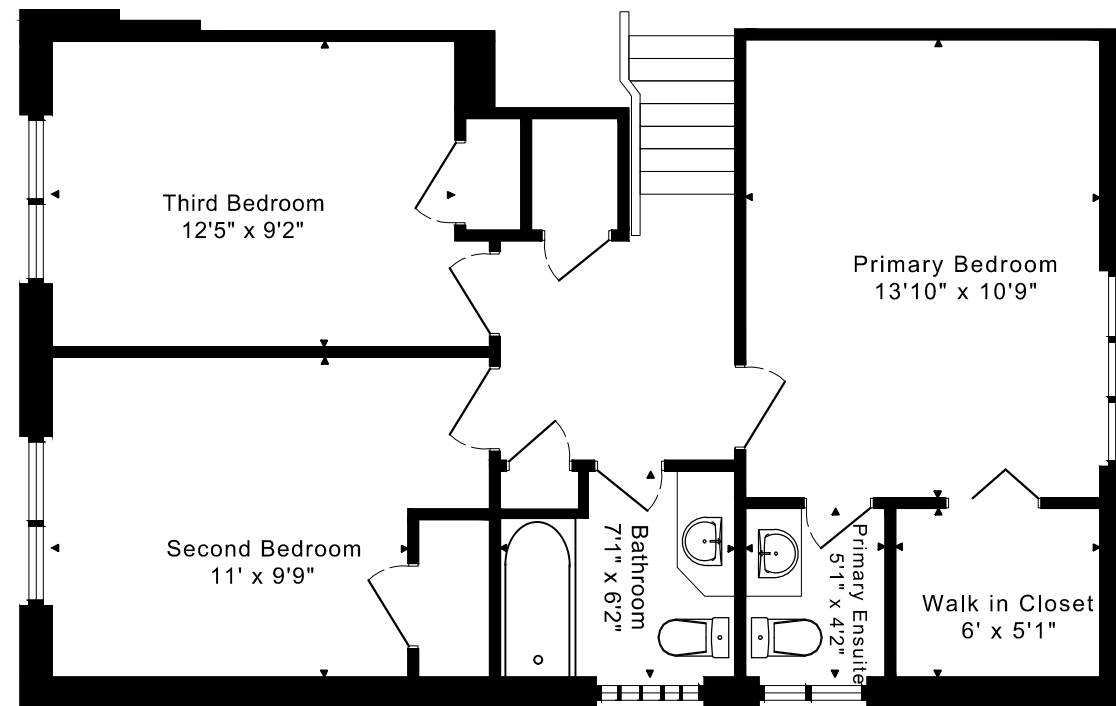
MAIN FLOOR 955 SQUARE FEET



1454 LEDA AVENUE

FLOOR PLANS

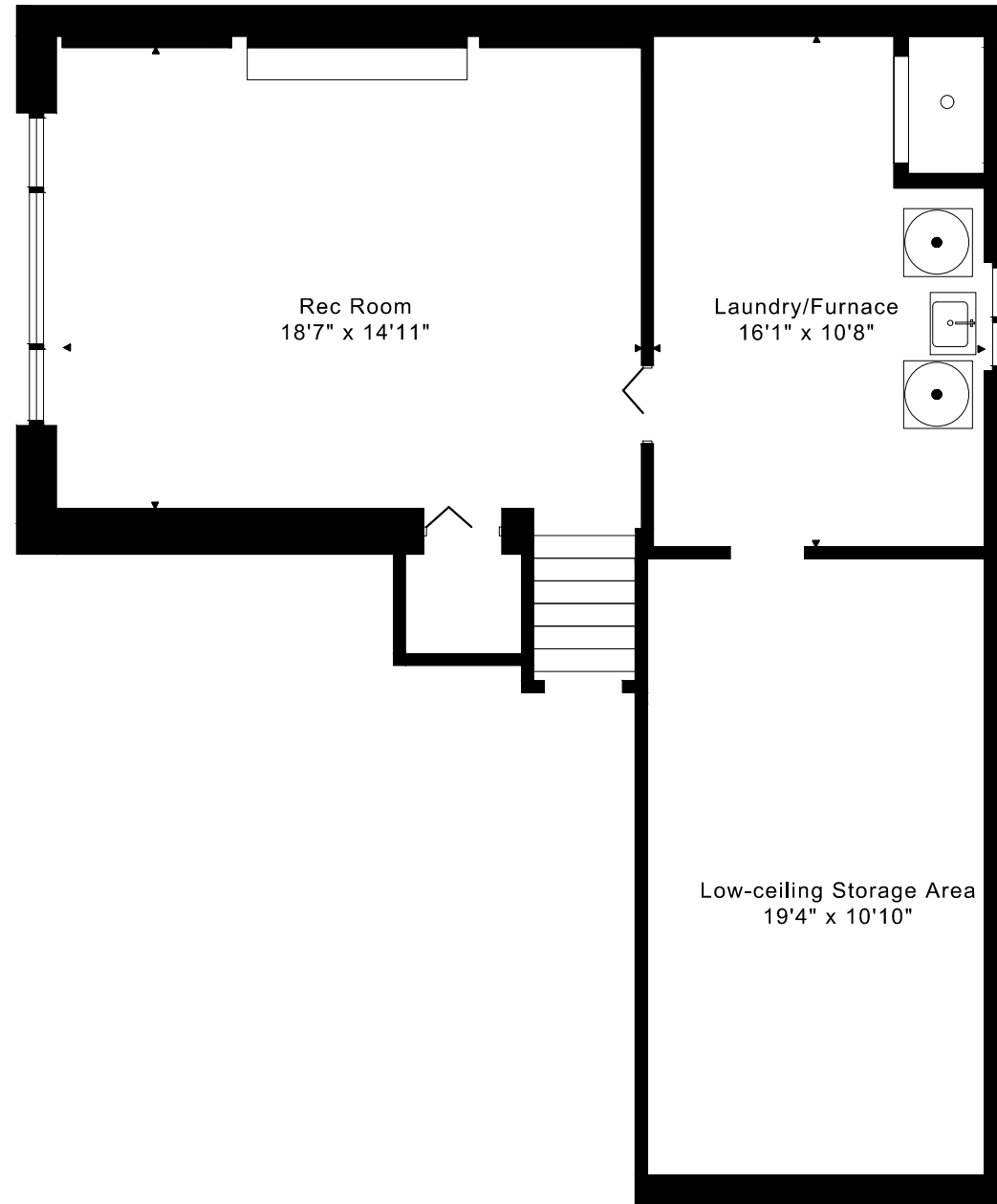
SECOND FLOOR 710 SQUARE FEET



1454 LEDA AVENUE

FLOOR PLANS

LOWER FLOOR 565 SQUARE FEET



1454 LEDA AVENUE ROOM MEASUREMENTS

Floor	Room	Imperial						Metric [m]		
		Length		Width		Height		Length	Width	Height
		Feet	Inches	Feet	Inches	Feet	Inches			
Second	Primary Bedroom	13	10	10	9	8	2	4,22	3,28	2,49
	Primary Ensuite	5	1	4	2	8	2	1,55	1,27	2,49
	Walk in Closet	6	0	5	1	8	1	1,83	1,55	2,46
	Second Bedroom	11	0	9	9	8	1	3,35	2,97	2,46
	Third Bedroom	12	5	9	2	8	1	3,78	2,79	2,46
	Bathroom	7	1	6	2	8	1	2,16	1,88	2,46
Main	Entry	8	0	8	0	8	1	2,44	2,44	2,46
	Living Room	16	2	10	11	8	1	4,93	3,33	2,46
	Dining Room	10	0	9	10	8	1	3,05	3,00	2,46
	Kitchen/Breakfast Area	16	4	9	2	8	1	4,98	2,79	2,46
	Family Room	19	4	10	10	8	1	5,89	3,30	2,46
Lower	Rec Room	18	7	14	11	7	4	5,66	4,55	2,24
	Laundry/Furnace	16	1	10	8	8	3	4,90	3,25	2,51
	Low-ceiling Storage Area	19	4	10	10	0	0	5,89	3,30	0,00

The following is a disclaimer regarding the approximate nature of dimensions and floor areas listed in this document:

Disclaimer:

The dimensions and floor areas listed in this document are provided as an estimate only and are intended to be used for illustration purposes only. These measurements are not necessarily meant to be a perfect representation of the actual space.

Notes regarding measurement methods and accuracy:

The utilization of laser measurement technology during the 3D model capturing process at the location provides an accurate representation of floor plans, with a typical margin of error of 3-5%. For the most accurate and official measurement data, it is advised to consult official documents such as MPAC records, builder's pre-construction plans, or data from certified measurement companies.

Exterior wall thickness is included in the calculation of the overall square footage and is considered as a component of the footprint. The wall thickness measurement is obtained onsite whenever possible, or estimated in the event where obtaining onsite measurements is not possible, such as in the case of condominium buildings where wall thickness may vary throughout the building.