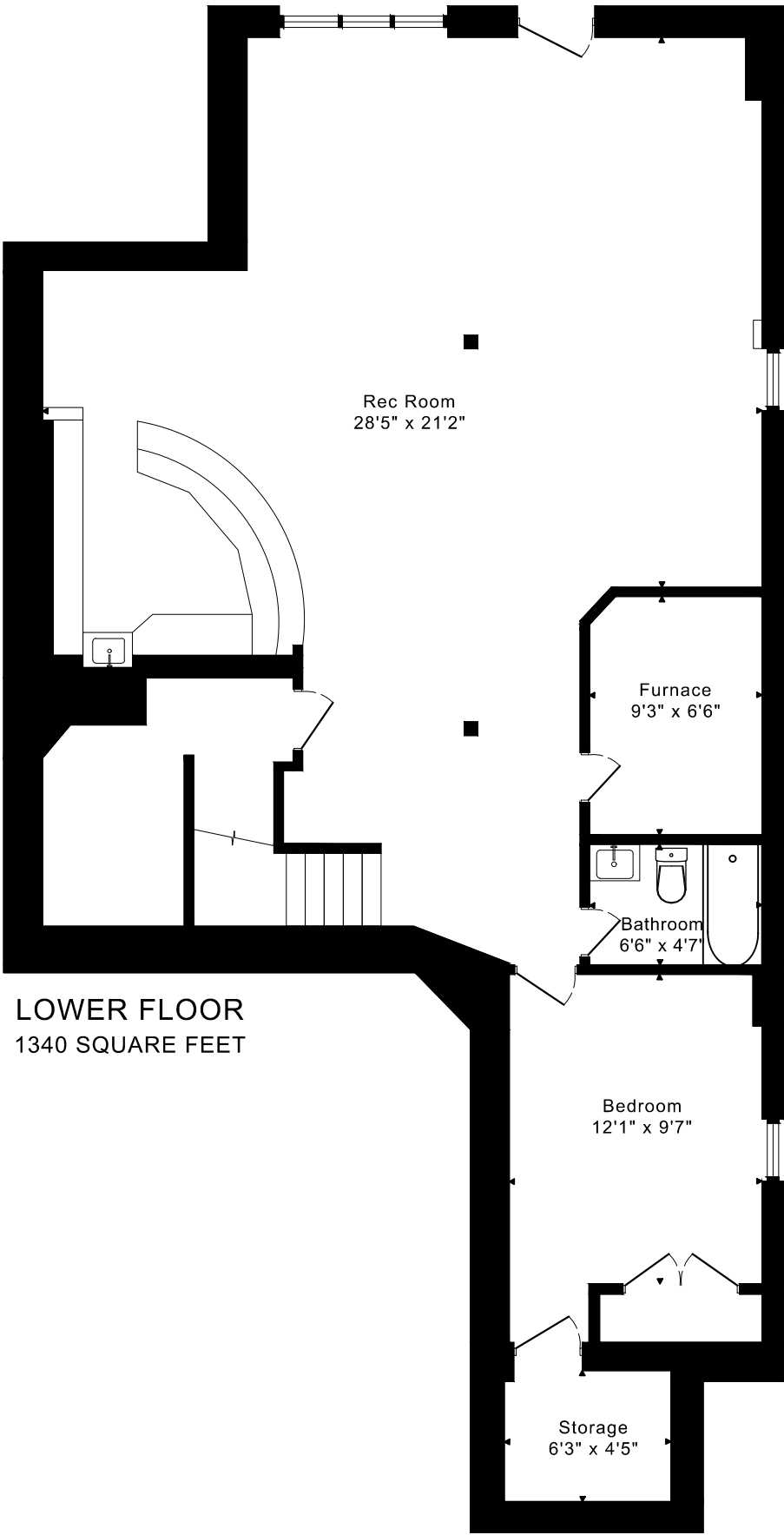
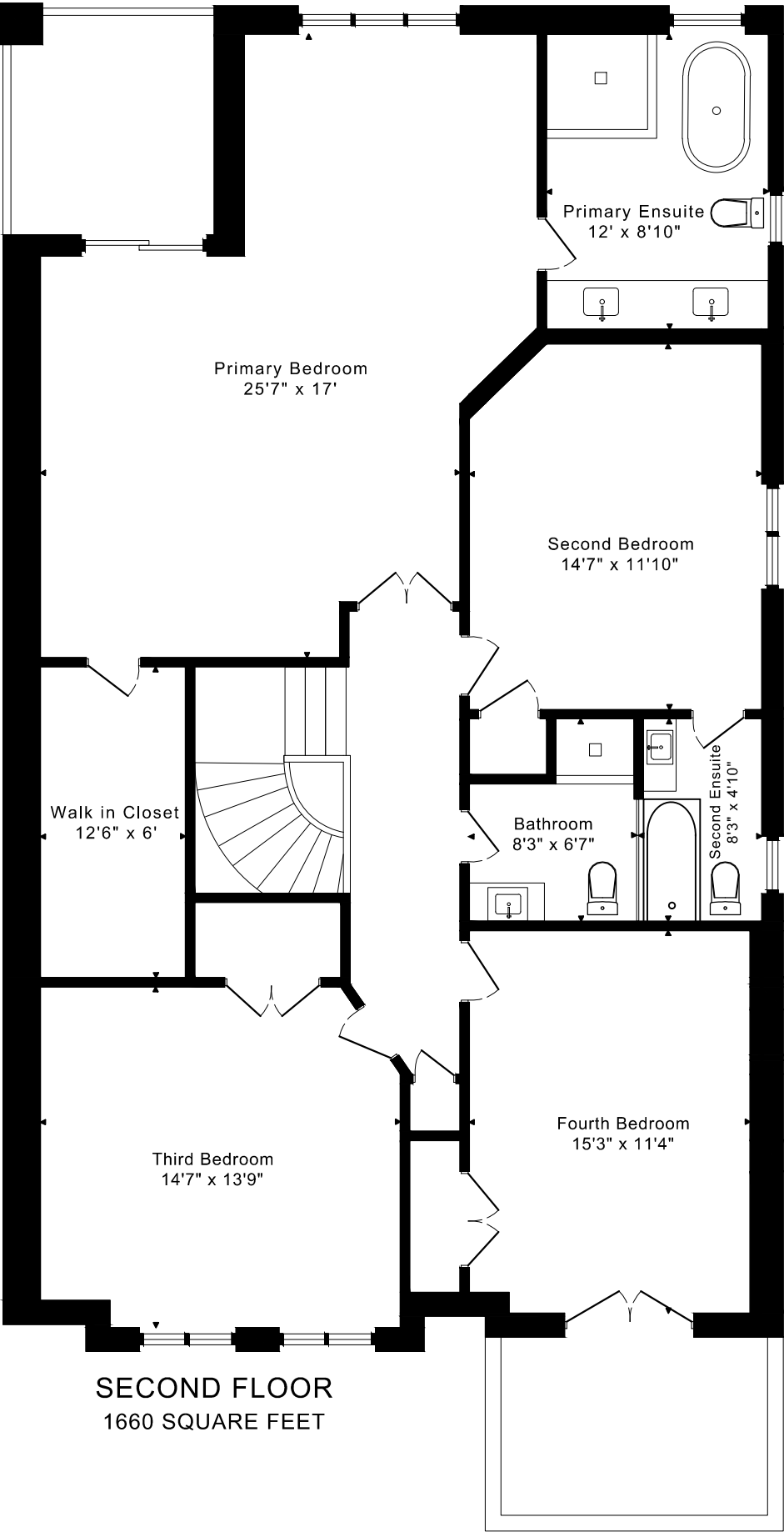
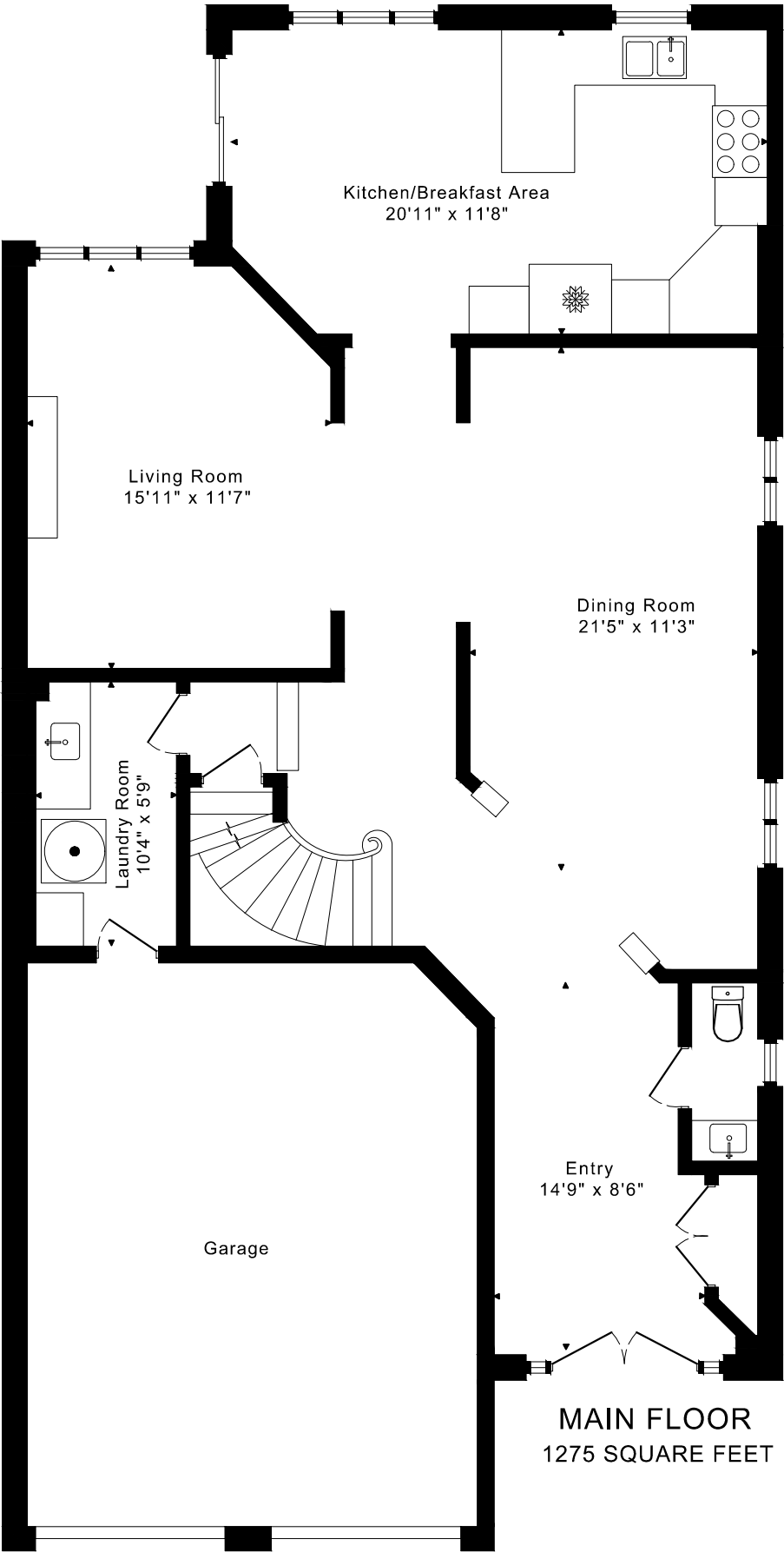


29 PINWOOD DRIVE  
FLOOR PLANS



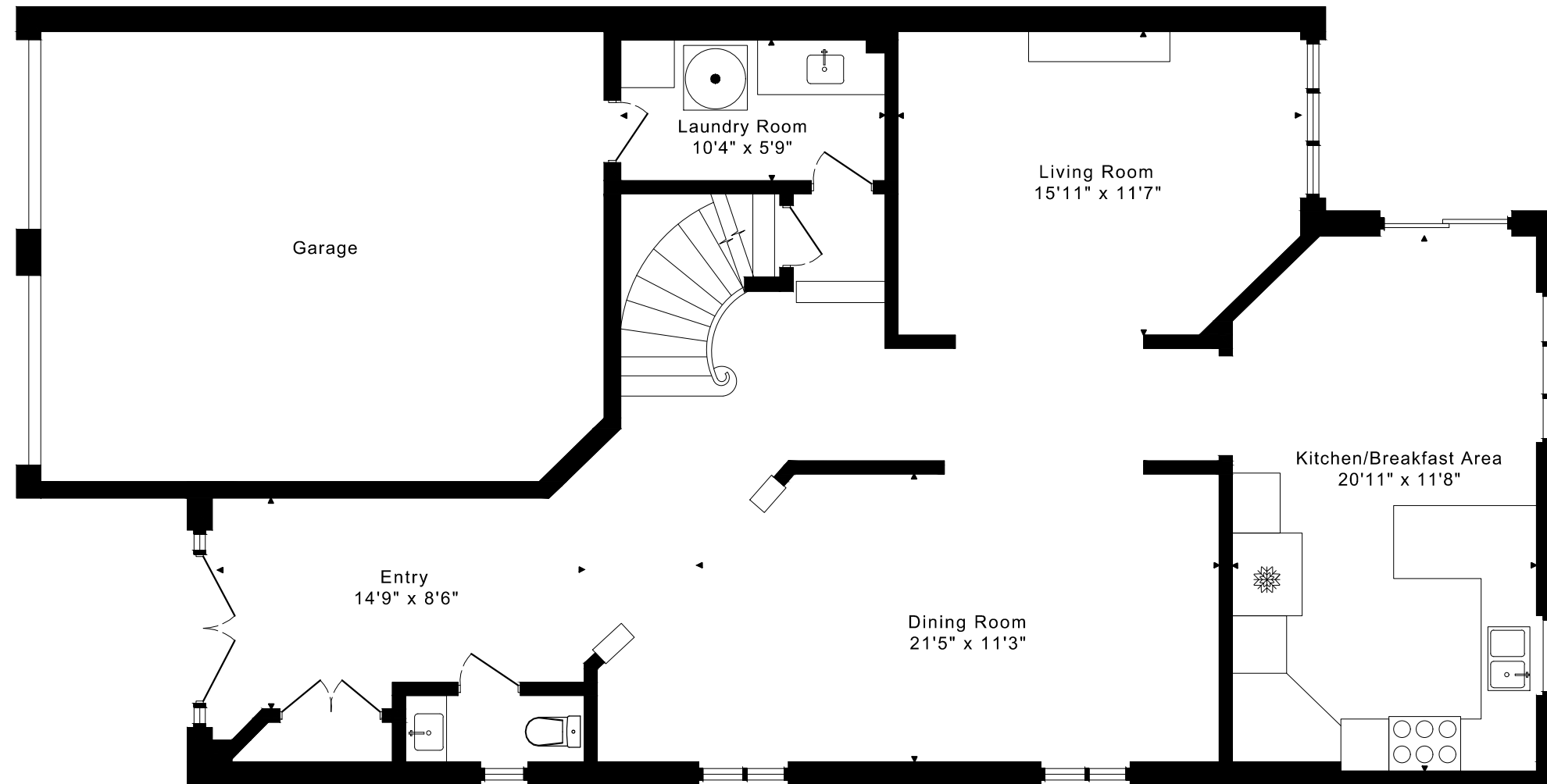
CAPTURED ON: 29 MAY 2025  
DIMENSIONS ARE APPROXIMATE AND SHOULD BE CONSIDERED  
ILLUSTRATIVE ONLY.

2935 sq ft + 1340 sq ft  
BELOW GRADE

# 29 PINWOOD DRIVE

## FLOOR PLANS

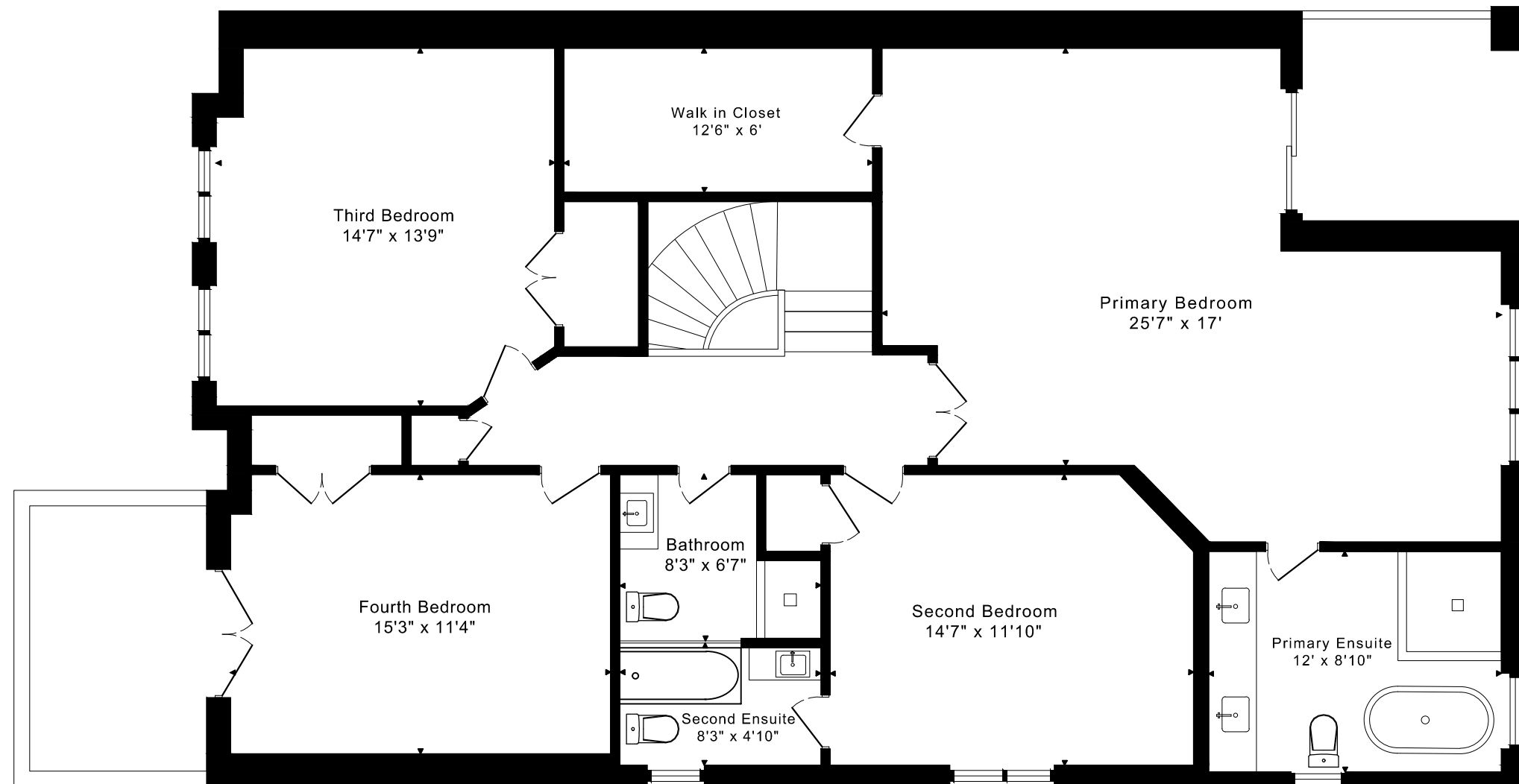
MAIN FLOOR 1275 SQUARE FEET



# 29 PINWOOD DRIVE

## FLOOR PLANS

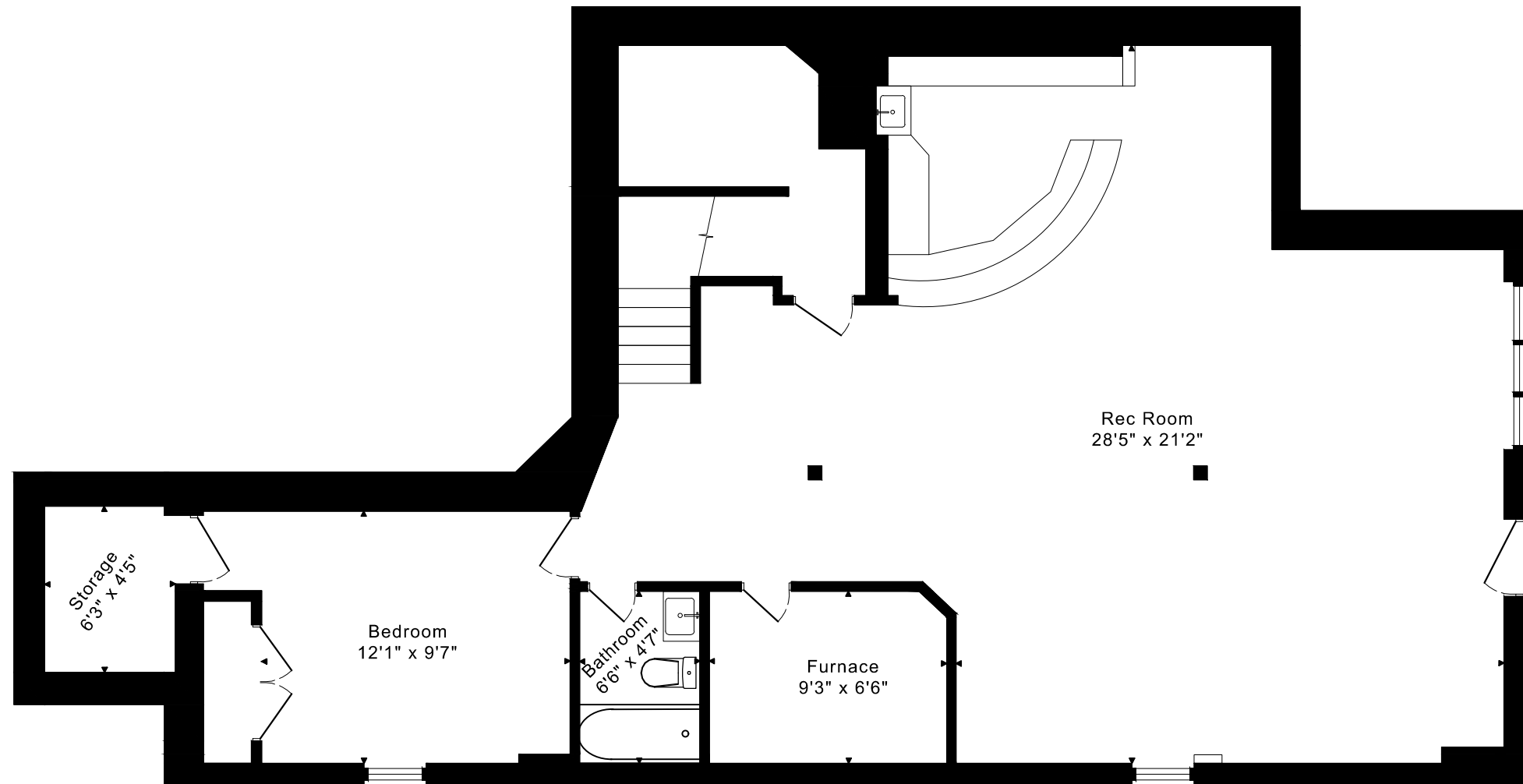
SECOND FLOOR 1660 SQUARE FEET



# 29 PINWOOD DRIVE

## FLOOR PLANS

LOWER FLOOR 1340 SQUARE FEET



29 PINWOOD DRIVE ROOM MEASUREMENTS

Floor	Room	Imperial						Metric [m]		
		Length		Width		Height		Length	Width	Height
		Feet	Inches	Feet	Inches	Feet	Inches			
Second	Primary Bedroom	25	7	17	0	8	0	7,80	5,18	2,44
	Primary Ensuite	12	0	8	10	8	0	3,66	2,69	2,44
	Walk in Closet	12	6	6	0	8	0	3,81	1,83	2,44
	Second Bedroom	14	7	11	10	8	0	4,45	3,61	2,44
	Second Ensuite	8	3	4	10	8	0	2,51	1,47	2,44
	Third Bedroom	14	7	13	9	8	0	4,45	4,19	2,44
	Fourth Bedroom	15	3	11	4	8	0	4,65	3,45	2,44
	Bathroom	8	3	6	7	8	0	2,51	2,01	2,44
Main	Entry	14	9	8	6	8	8	4,50	2,59	2,64
	Living Room	15	11	11	7	8	8	4,85	3,53	2,64
	Dining Room	21	5	11	3	8	8	6,53	3,43	2,64
	Kitchen/Breakfast Area	20	11	11	8	8	8	6,38	3,56	2,64
	Laundry Room	10	4	5	9	9	11	3,15	1,75	3,02
Lower	Rec Room	28	5	21	2	7	10	8,66	6,45	2,39
	Bedroom	12	1	9	7	7	10	3,68	2,92	2,39
	Furnace	9	3	6	6	7	10	2,82	1,98	2,39
	Bathroom	6	6	4	7	7	10	1,98	1,40	2,39
	Storage	6	3	4	5	7	10	1,91	1,35	2,39

The following is a disclaimer regarding the approximate nature of dimensions and floor areas listed in this document:

---

**Disclaimer:**

The dimensions and floor areas listed in this document are provided as an estimate only and are intended to be used for illustration purposes only. These measurements are not necessarily meant to be a perfect representation of the actual space.

**Notes regarding measurement methods and accuracy:**

The utilization of laser measurement technology during the 3D model capturing process at the location provides an accurate representation of floor plans, with a typical margin of error of 3-5%. For the most accurate and official measurement data, it is advised to consult official documents such as MPAC records, builder's pre-construction plans, or data from certified measurement companies.

Exterior wall thickness is included in the calculation of the overall square footage and is considered as a component of the footprint. The wall thickness measurement is obtained onsite whenever possible, or estimated in the event where obtaining onsite measurements is not possible, such as in the case of condominium buildings where wall thickness may vary throughout the building.