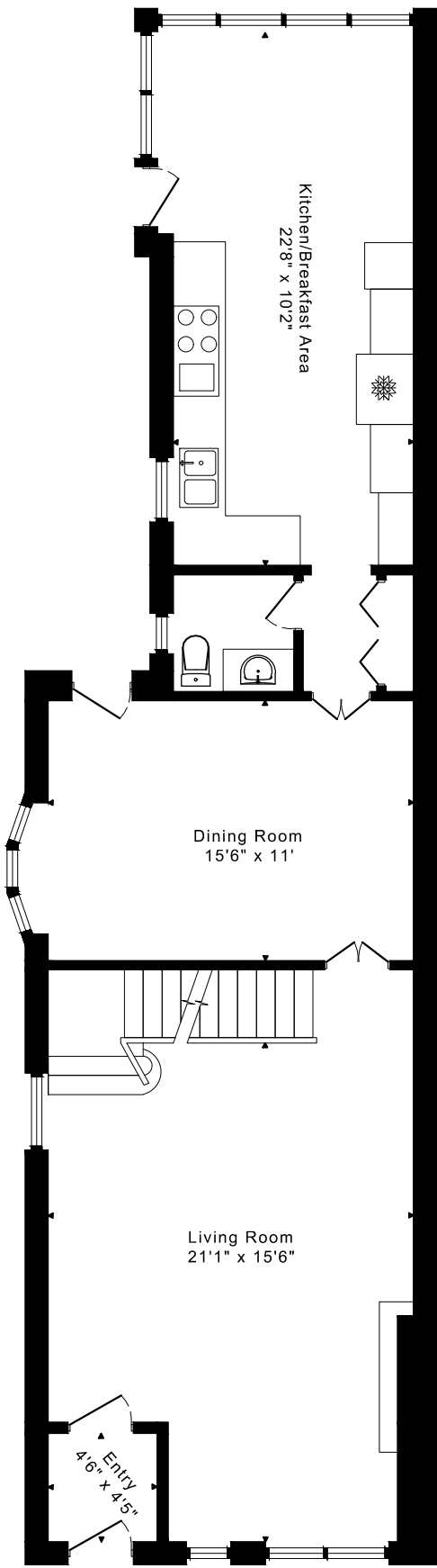
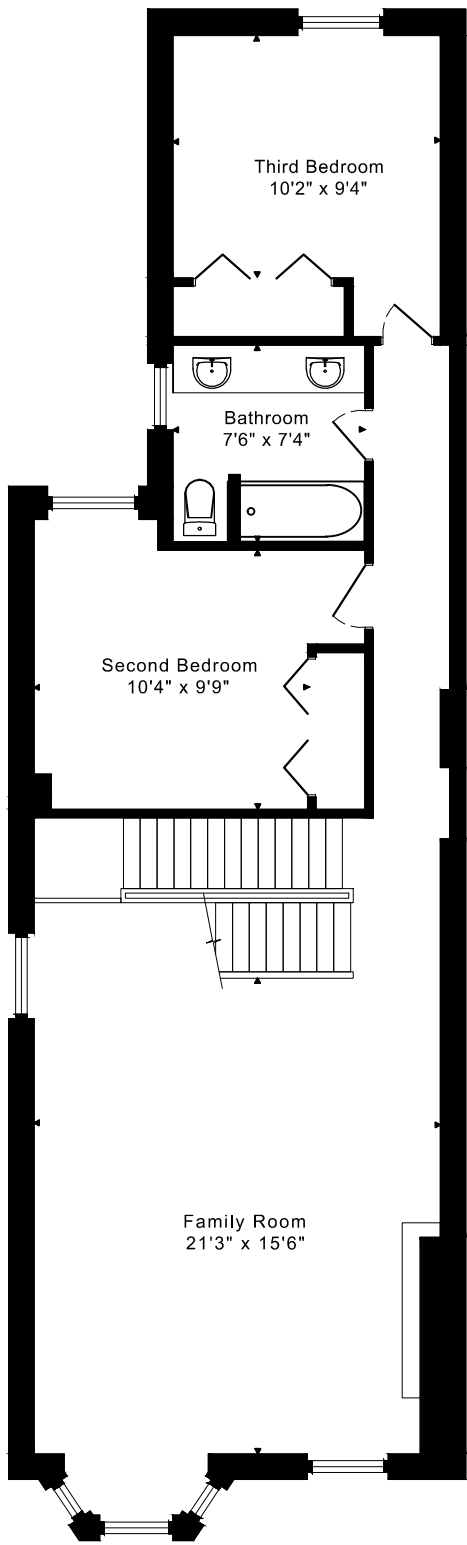


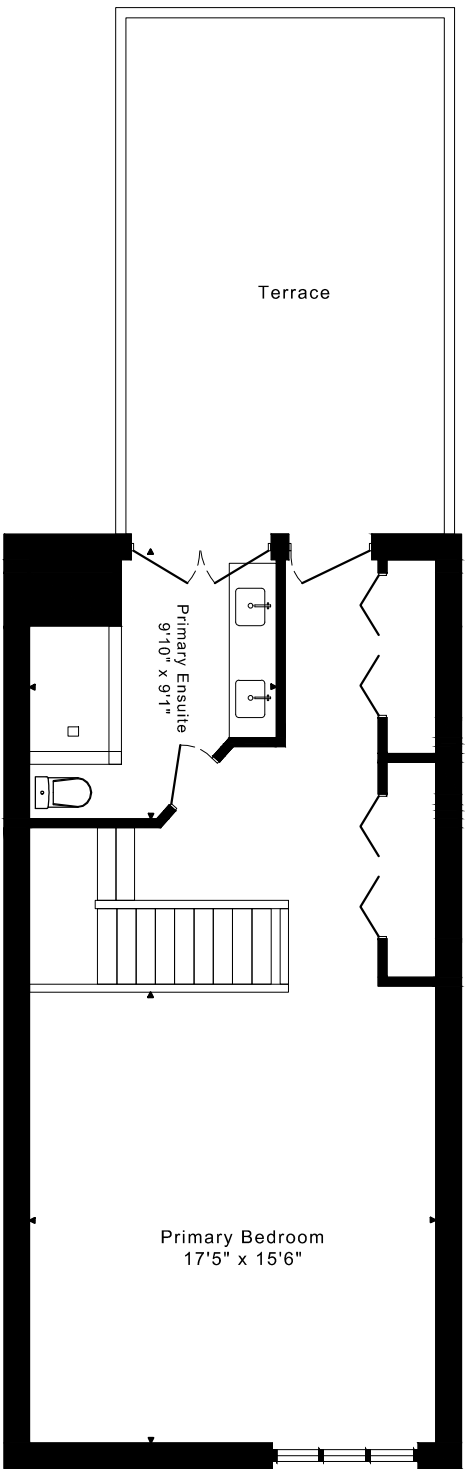
120 HAZELTON AVENUE
FLOOR PLANS



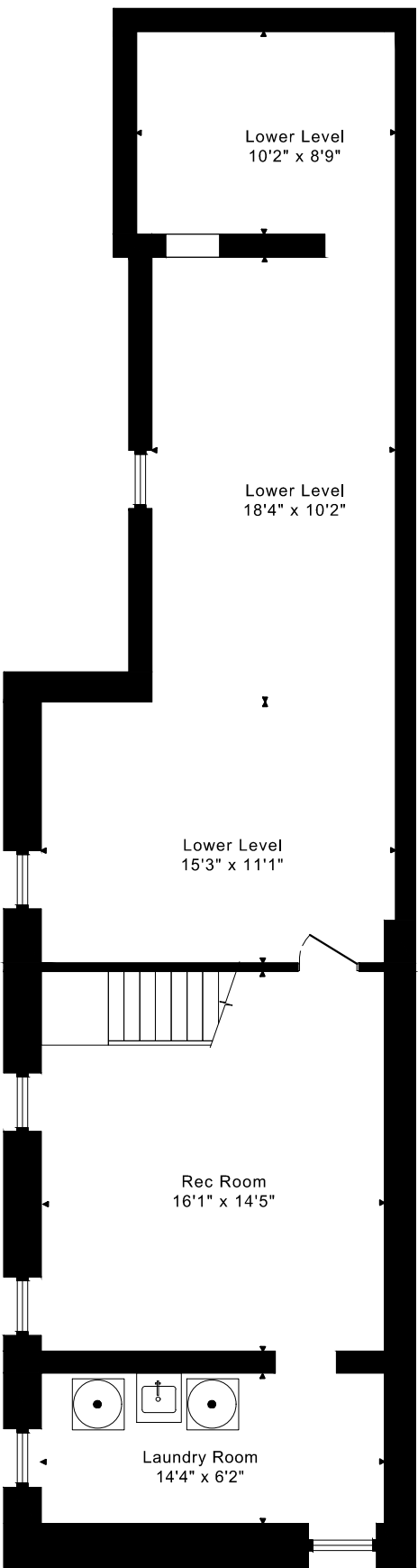
MAIN FLOOR
1020 SQUARE FEET



SECOND FLOOR
906 SQUARE FEET



THIRD FLOOR
630 SQUARE FEET

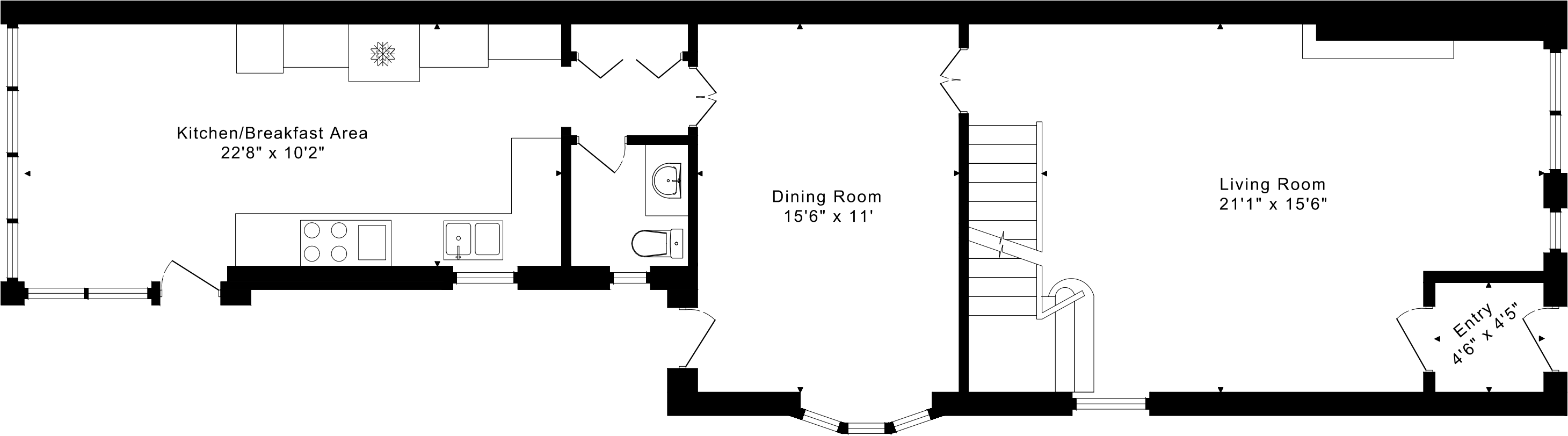


LOWER FLOOR
1020 SQUARE FEET

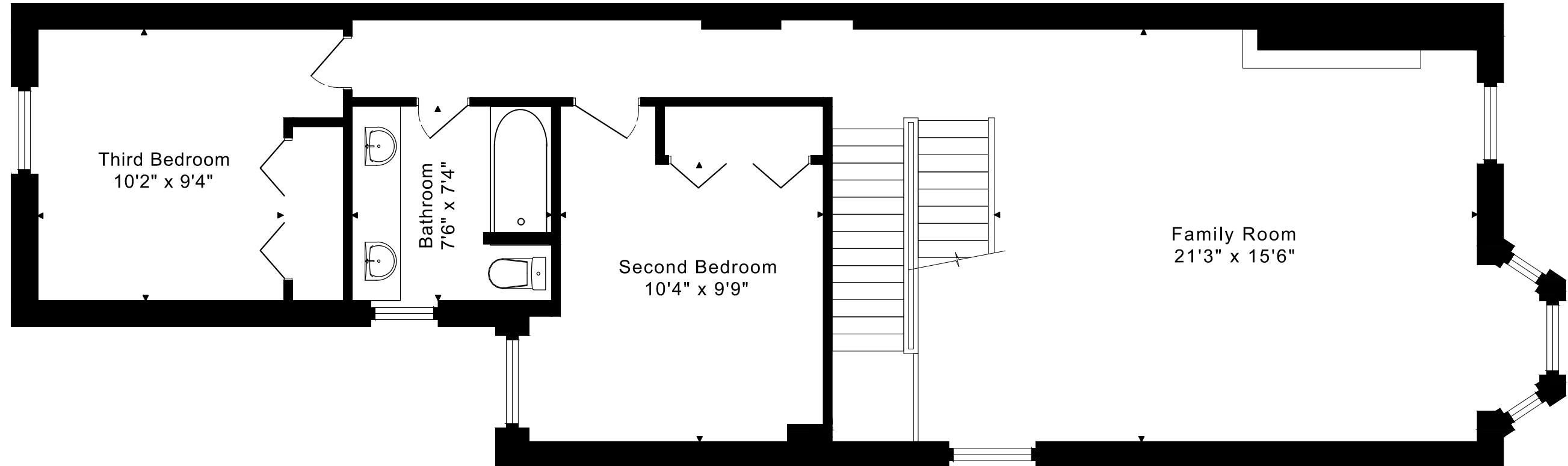
2556 sq ft + 1020 sq ft
BELOW GRADE

120 HAZELTON AVENUE
FLOOR PLANS

MAIN FLOOR 1020 SQUARE FEET

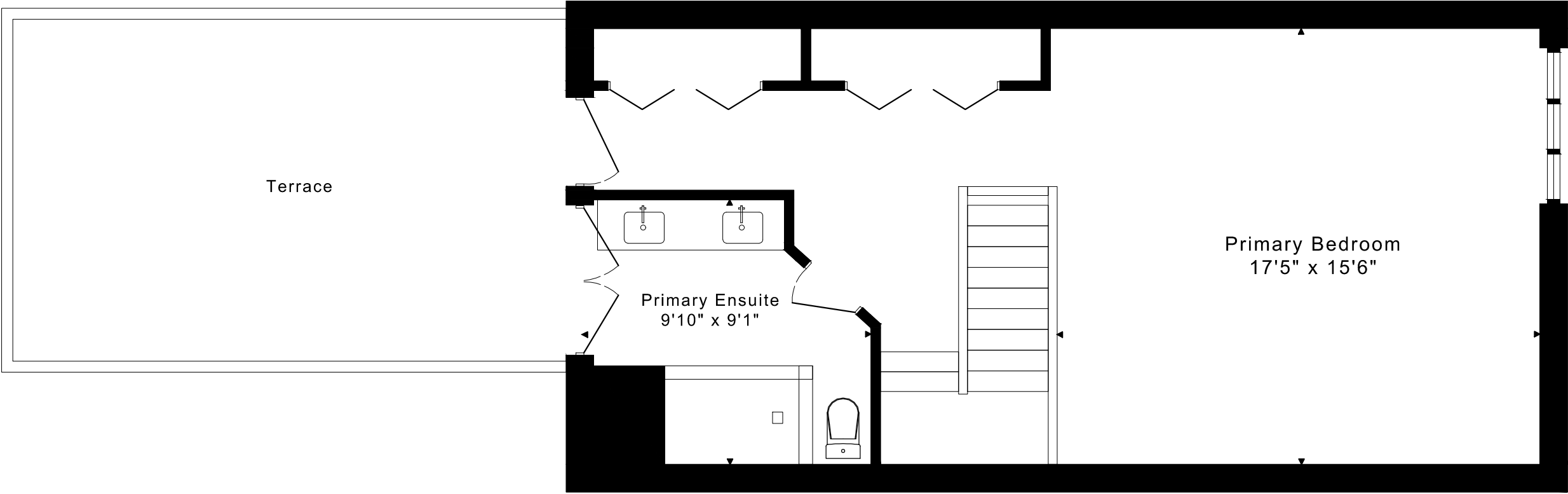


120 HAZELTON AVENUE
FLOOR PLANS
SECOND FLOOR 906 SQUARE FEET

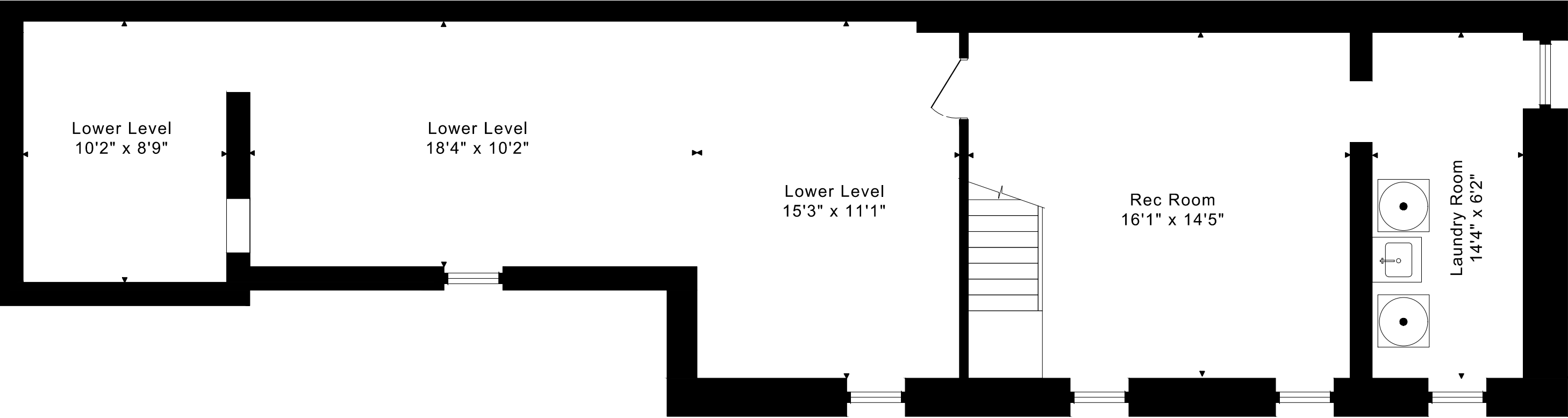


120 HAZELTON AVENUE
FLOOR PLANS

THIRD FLOOR 630 SQUARE FEET



120 HAZELTON AVENUE
FLOOR PLANS
LOWER FLOOR 1020 SQUARE FEET



120 HAZELTON AVENUE ROOM MEASUREMENTS

Floor	Room	Imperial						Metric [m]		
		Length		Width		Height		Length	Width	Height
		Feet	Inches	Feet	Inches	Feet	Inches			
Third	Primary Bedroom	17	5	15	6	12	5	5,31	4,72	3,78
	Primary Ensuite	9	10	9	1	11	0	3,00	2,77	3,35
Second	Family Room	21	3	15	6	8	6	6,48	4,72	2,59
	Second Bedroom	10	4	9	9	8	6	3,15	2,97	2,59
	Third Bedroom	10	2	9	4	8	6	3,10	2,84	2,59
	Bathroom	7	6	7	4	8	6	2,29	2,24	2,59
Main	Entry	4	6	4	5	8	10	1,37	1,35	2,69
	Living Room	21	1	15	6	8	10	6,43	4,72	2,69
	Dining Room	15	6	11	0	8	10	4,72	3,35	2,69
	Kitchen/Breakfast Area	22	8	10	2	8	10	6,91	3,10	2,69
Lower	Rec Room	16	1	14	5	6	10	4,90	4,39	2,08
	Laundry Room	14	4	6	2	6	10	4,37	1,88	2,08
	Lower Level	15	3	11	1	6	10	4,65	3,38	2,08
	Lower Level	18	4	10	2	6	10	5,59	3,10	2,08
	Lower Level	10	2	8	9	6	10	3,10	2,67	2,08

The following is a disclaimer regarding the approximate nature of dimensions and floor areas listed in this document:

Disclaimer:

The dimensions and floor areas listed in this document are provided as an estimate only and are intended to be used for illustration purposes only. These measurements are not necessarily meant to be a perfect representation of the actual space.

Notes regarding measurement methods and accuracy:

The utilization of laser measurement technology during the 3D model capturing process at the location provides an accurate representation of floor plans, with a typical margin of error of 3-5%. For the most accurate and official measurement data, it is advised to consult official documents such as MPAC records, builder's pre-construction plans, or data from certified measurement companies.

Exterior wall thickness is included in the calculation of the overall square footage and is considered as a component of the footprint. The wall thickness measurement is obtained onsite whenever possible, or estimated in the event where obtaining onsite measurements is not possible, such as in the case of condominium buildings where wall thickness may vary throughout the building.