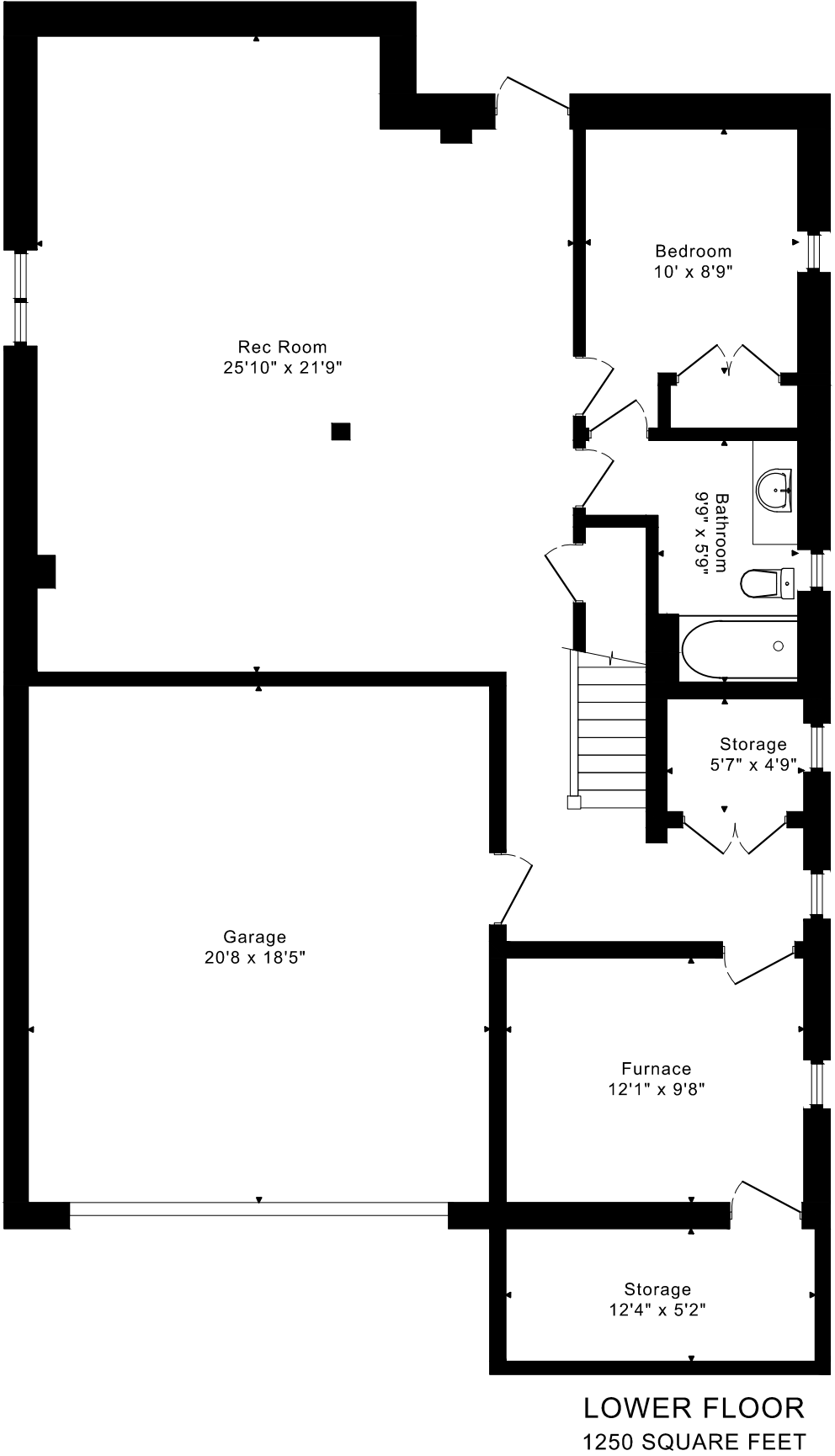
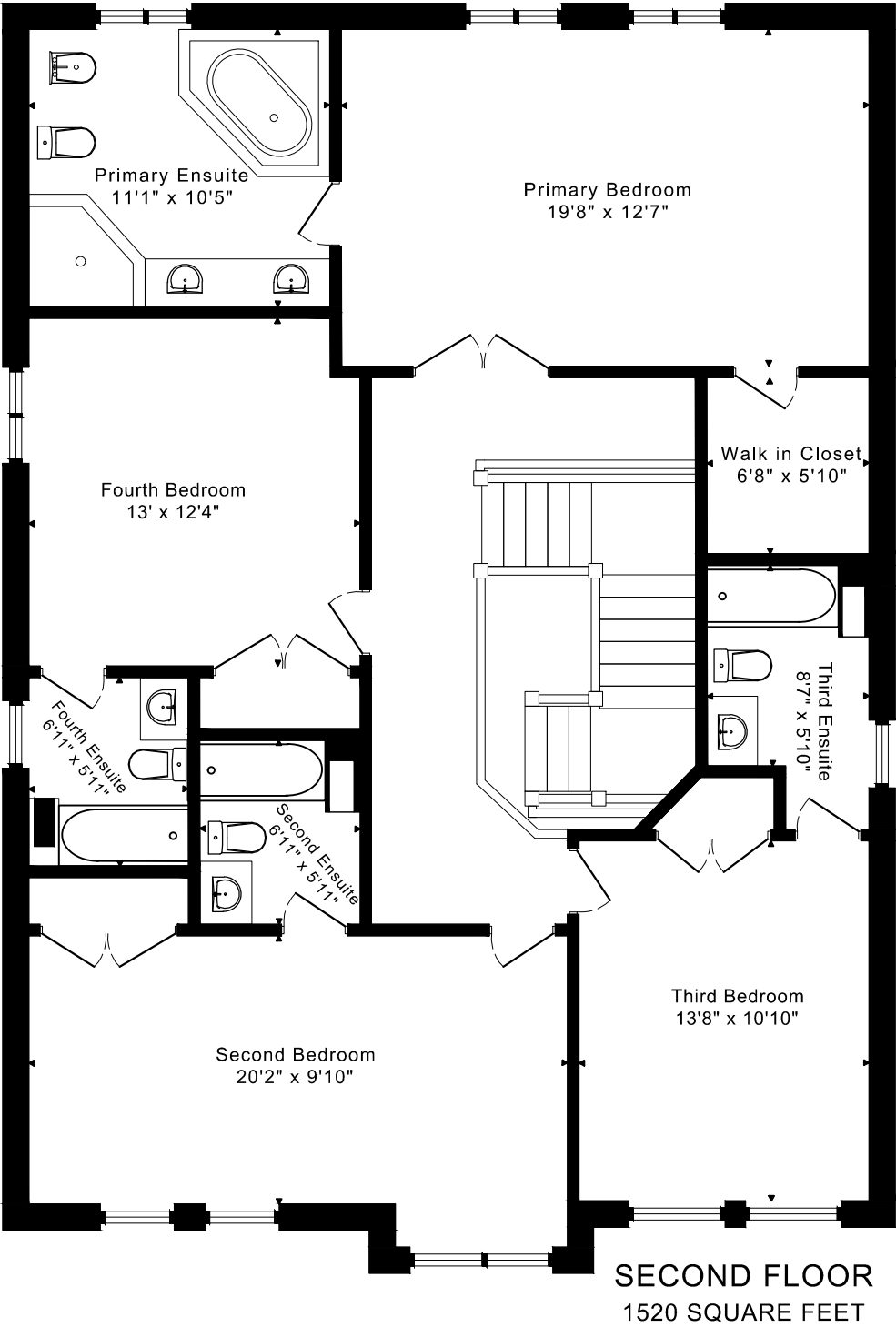
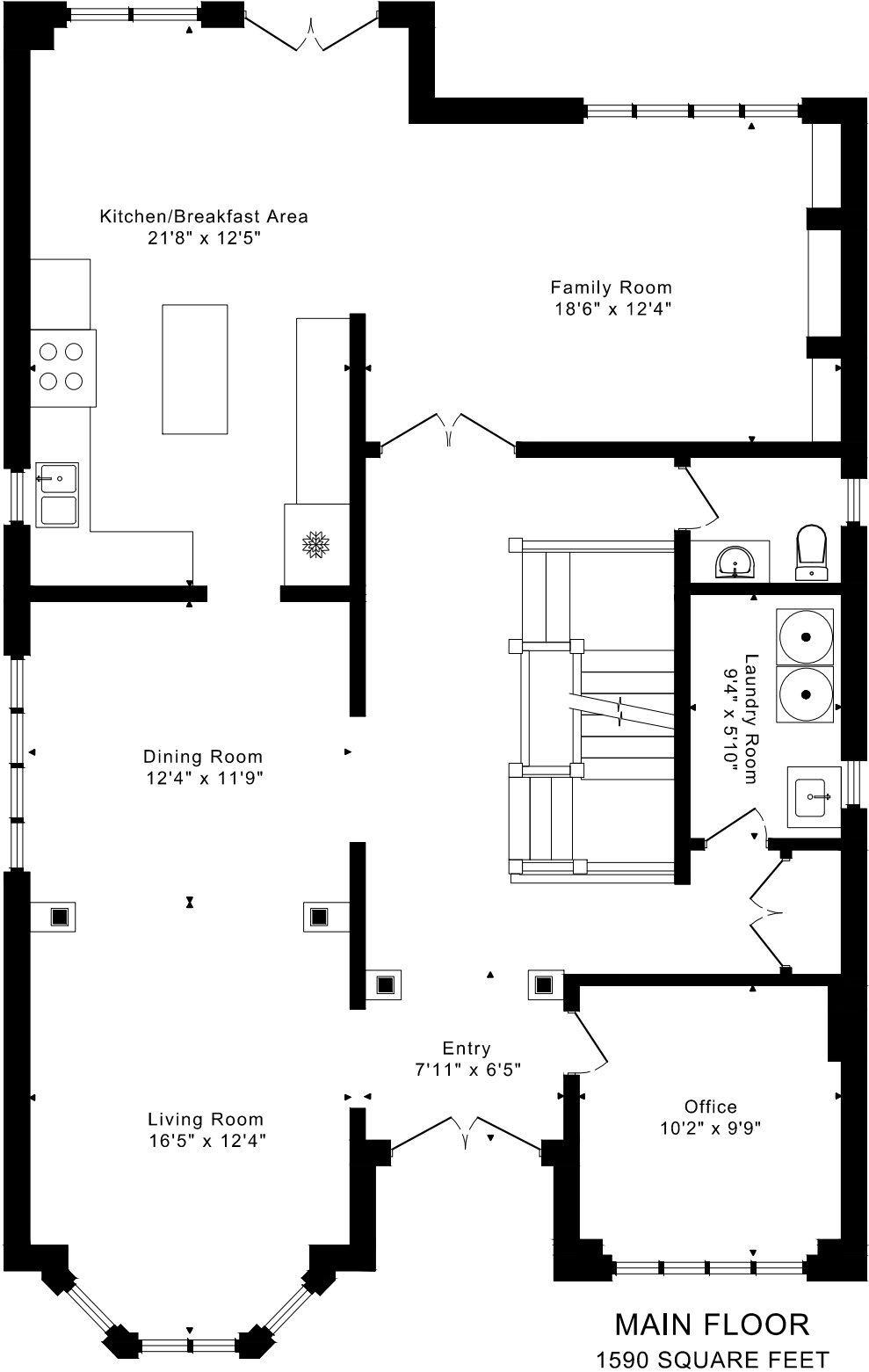


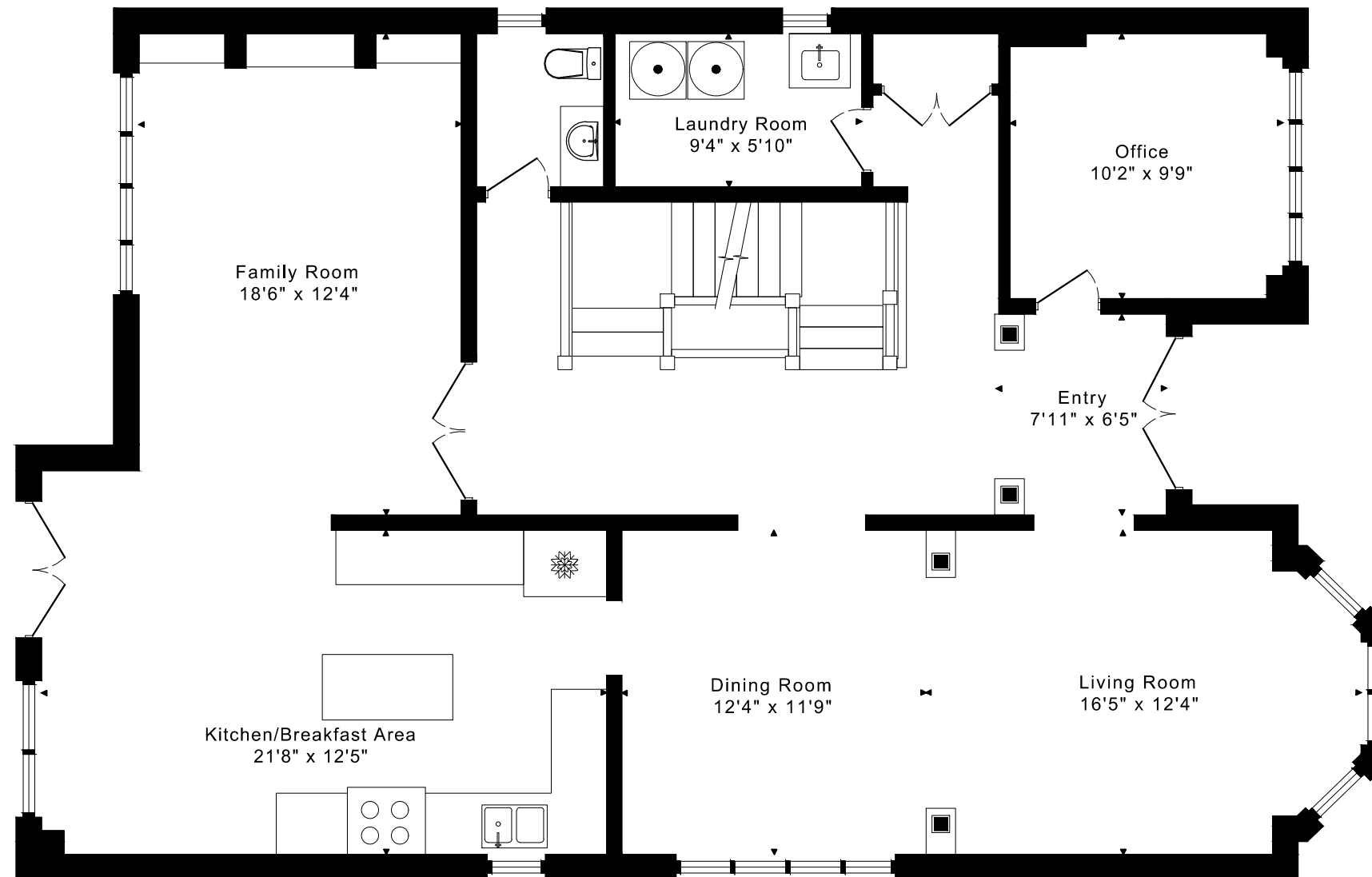
256 HADDINGTON AVENUE
FLOOR PLANS



3110 sq ft + 1250 sq ft
BELOW GRADE

256 HADDINGTON AVENUE FLOOR PLANS

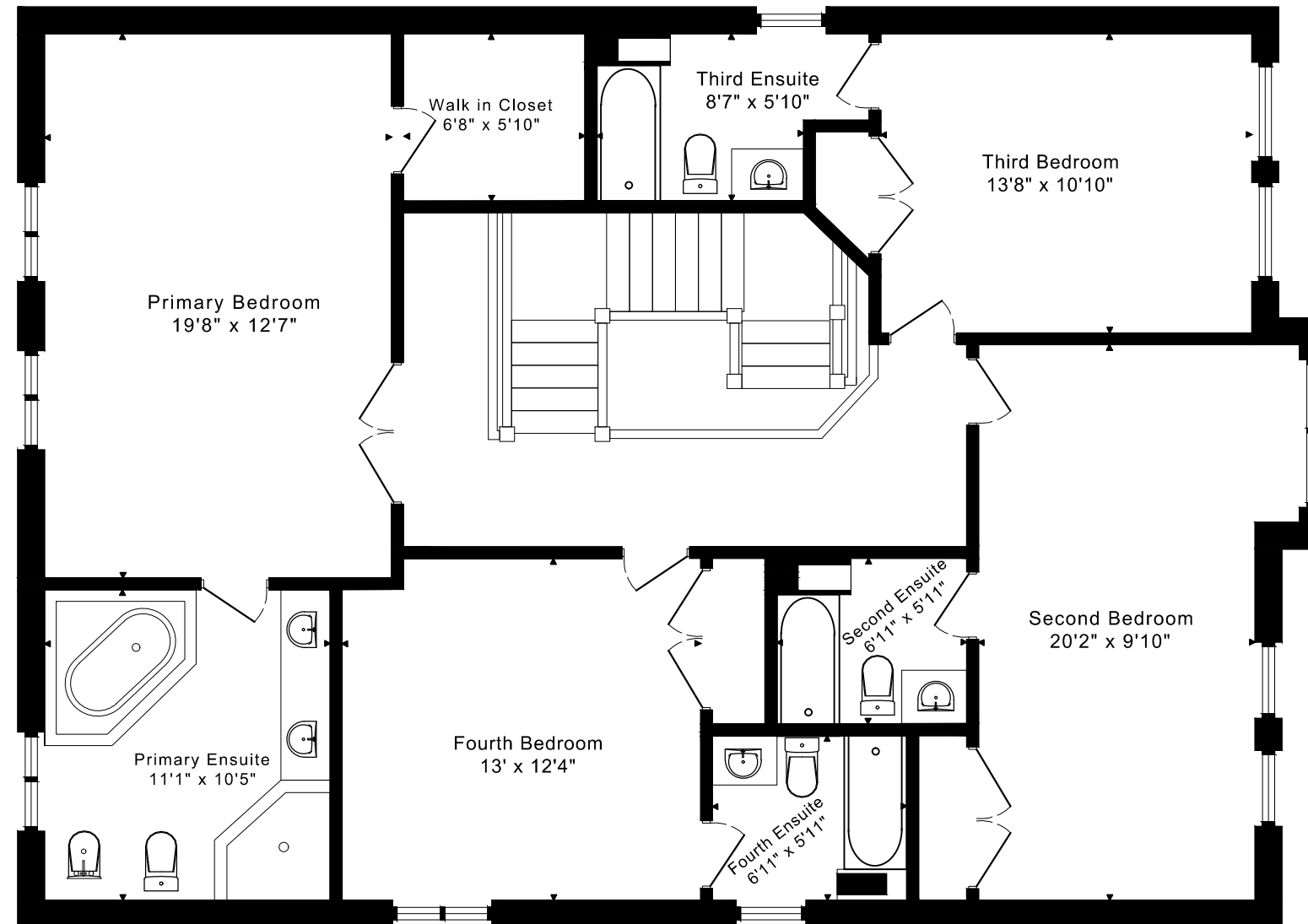
MAIN FLOOR 1590 SQUARE FEET



256 HADDINGTON AVENUE

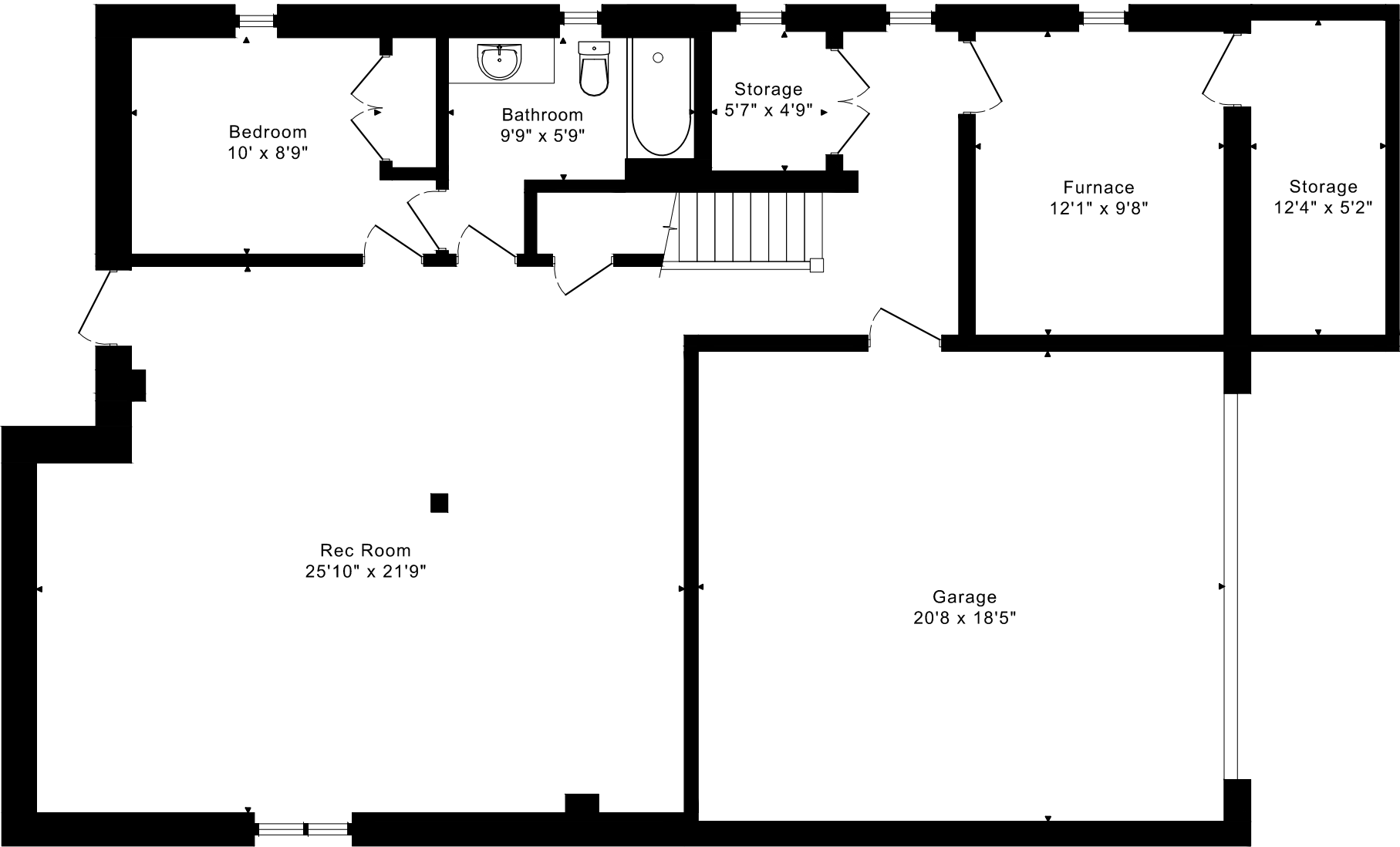
FLOOR PLANS

SECOND FLOOR 1520 SQUARE FEET



256 HADDINGTON AVENUE
FLOOR PLANS

LOWER FLOOR 1250 SQUARE FEET



256 HADDINGTON AVENUE ROOM MEASUREMENTS

Floor	Room	Imperial						Metric [m]		
		Length		Width		Height		Length	Width	Height
		Feet	Inches	Feet	Inches	Feet	Inches			
Second	Primary Bedroom	19	8	12	7	8	1	5,99	3,84	2,46
	Primary Ensuite	11	1	10	5	8	1	3,38	3,18	2,46
	Walk in Closet	6	8	5	10	8	1	2,03	1,78	2,46
	Second Bedroom	20	2	9	10	8	1	6,15	3,00	2,46
	Second Ensuite	6	11	5	11	8	1	2,11	1,80	2,46
	Third Bedroom	13	8	10	10	8	1	4,17	3,30	2,46
	Third Ensuite	9	8	5	10	8	1	2,95	1,78	2,46
	Fourth Bedroom	13	0	12	4	8	1	3,96	3,76	2,46
	Fourth Ensuite	6	11	5	11	8	1	2,11	1,80	2,46
Main	Entry	7	11	6	5	9	0	2,41	1,96	2,74
	Living Room	16	5	12	4	9	0	5,00	3,76	2,74
	Dining Room	12	4	11	9	9	0	3,76	3,58	2,74
	Kitchen/Breakfast Area	21	8	12	5	9	0	6,60	3,78	2,74
	Family Room	18	6	12	4	9	0	5,64	3,76	2,74
	Office	10	2	9	9	9	0	3,10	2,97	2,74
	Laundry Room	9	4	5	10	8	1	2,84	1,78	2,46
Lower	Rec Room	25	10	21	9	8	0	7,87	6,63	2,44
	Bedroom	10	0	8	9	8	0	3,05	2,67	2,44
	Bathroom	9	9	5	9	7	2	2,97	1,75	2,18
	Storage	5	7	4	9	8	0	1,70	1,45	2,44
	Furnace	12	1	9	8	8	0	3,68	2,95	2,44
	Storage	12	4	5	2	8	0	3,76	1,57	2,44
	Garage	20	8	18	5	8	0	6,30	5,61	2,44

CAPTURED ON: 10 JUNE 2025
 DIMENSIONS ARE APPROXIMATE AND SHOULD BE CONSIDERED
 ILLUSTRATIVE ONLY.

3110 sq ft + 1250 sq ft
 BELOW GRADE

The following is a disclaimer regarding the approximate nature of dimensions and floor areas listed in this document:

Disclaimer:

The dimensions and floor areas listed in this document are provided as an estimate only and are intended to be used for illustration purposes only. These measurements are not necessarily meant to be a perfect representation of the actual space.

Notes regarding measurement methods and accuracy:

The utilization of laser measurement technology during the 3D model capturing process at the location provides an accurate representation of floor plans, with a typical margin of error of 3-5%. For the most accurate and official measurement data, it is advised to consult official documents such as MPAC records, builder's pre-construction plans, or data from certified measurement companies.

Exterior wall thickness is included in the calculation of the overall square footage and is considered as a component of the footprint. The wall thickness measurement is obtained onsite whenever possible, or estimated in the event where obtaining onsite measurements is not possible, such as in the case of condominium buildings where wall thickness may vary throughout the building.