

DISTINCTIVE HOMES

Luxury Collection



22 Salter Place
MAPLEWOOD

www.22salterplace.com



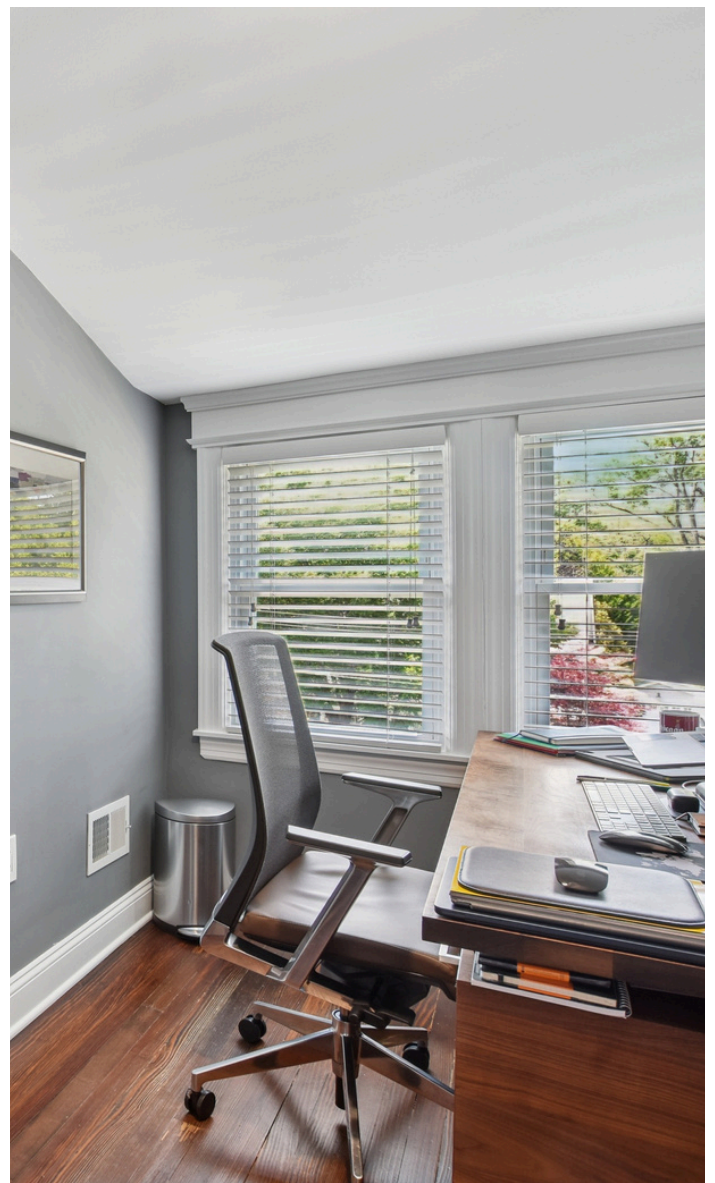






INTERIOR IMPROVEMENTS:

- Custom window treatments by The Shade Store and Hunter Douglas
- New lighting fixtures throughout the house
- Wall-mounted TVs with hidden electrical
- Baths: new rain shower heads in the primary bath; new glass shower doors - hall baths
- Kitchen: new range hood and new Bosch dishwasher
- Laundry: new flooring, new washer and dryer (Electrolux)
- New smart thermostat, security system and smart smoke detectors
- New heat pumps on both HVAC units and improved circulation of 1st/basement HVAC
- Reinforced the Den/Sunroom with additional support studs





EXTERIOR IMPROVEMENTS:

- New Garage built by Gialluisi Custom Homes with insulation, storage capacity above, lighting and electric door opener; paved driveway (2019/2020)
 - Universal EV charger (2021)
- Garbage and storage sheds (2020)
 - Extended patio flooring (2019)
- New professional landscaping with raised flower beds and specimen plantings (2019 with ongoing maintenance)
 - New front door and mailbox (2022)
 - Recently painted and enhanced exterior entryways (2025)
- Ring security cameras/video doorbell – positioned at the front porch and garage (2024)

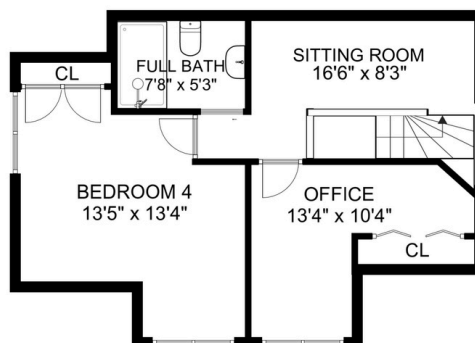
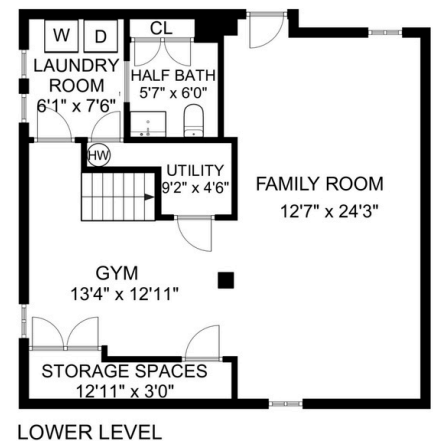
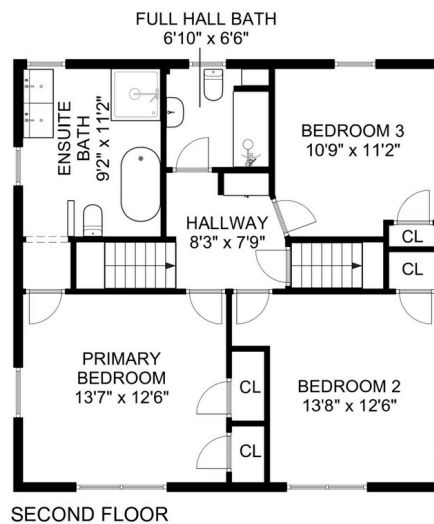
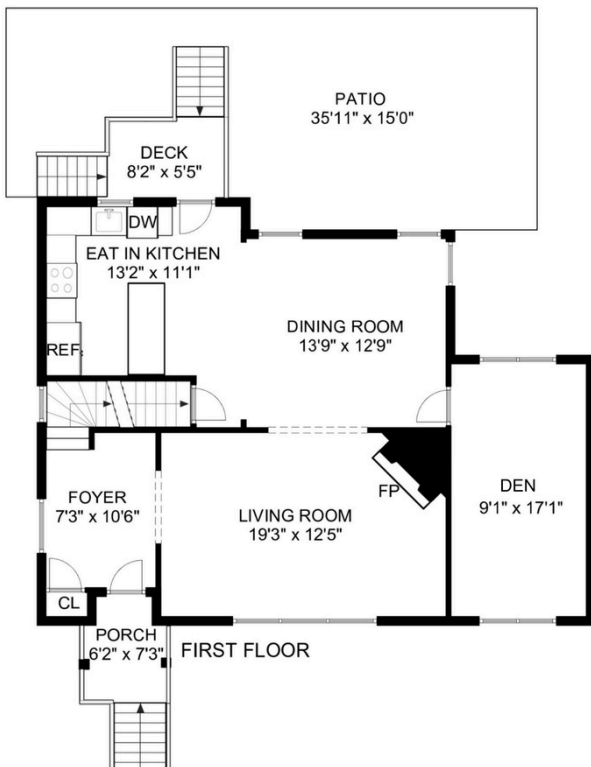
THE DETAILS

BUILT CIRCA 1921

4 BEDROOMS / 3 1/2 BATHS / 0.17 ACRES

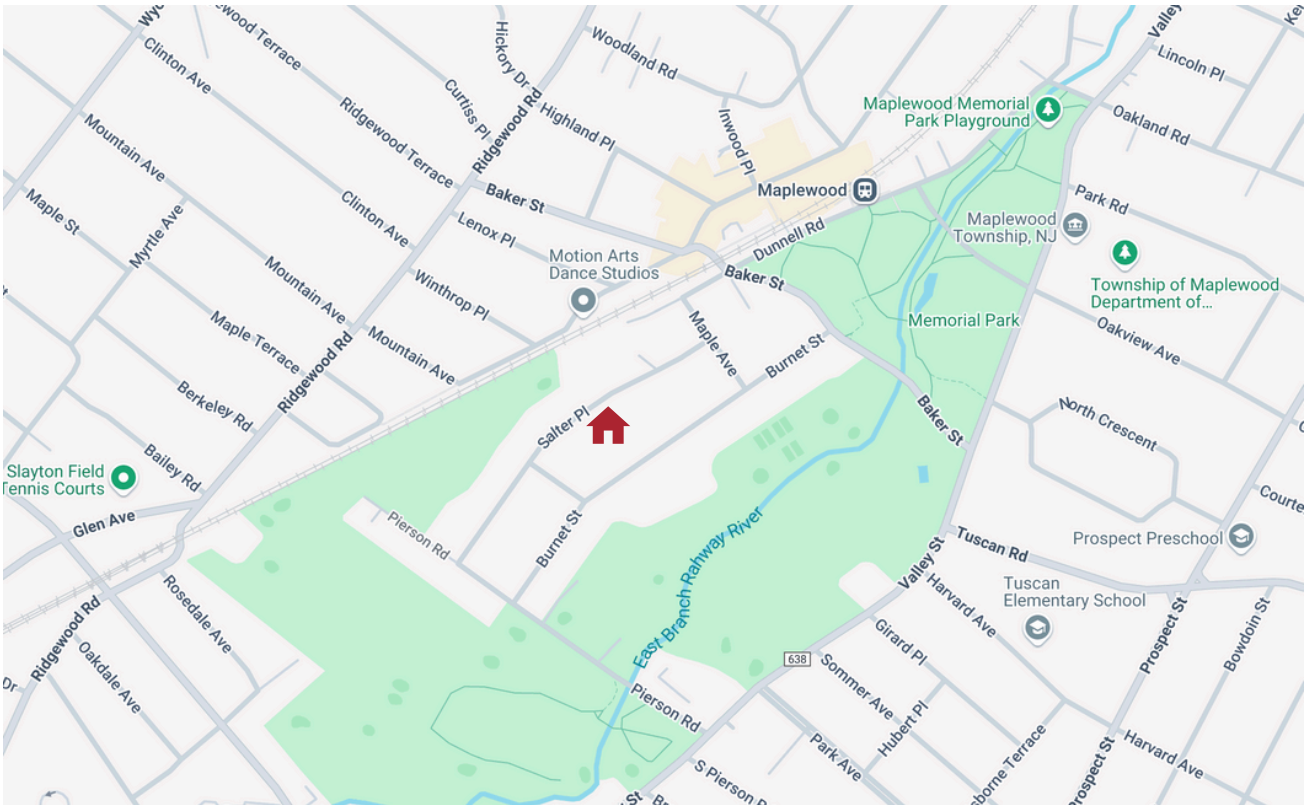
Set in the heart of the coveted Golf Island neighborhood, this completely move-in ready home offers exceptional living space to enjoy inside and out, with incredible access to vibrant Maplewood Village, the brand new state-of-the-art library, beautiful Memorial Park & NYC trains! High ceilings, period details, hardwood floors, custom window treatments, a soft, curated paint palette and modern lighting enhances a flexible flowing floorplan of light-filled rooms set across four levels of living space. The modern kitchen features stainless steel appliances, tile backspash, brushed gold hardware & quartz counters with a waterfall-edge breakfast bar. A spacious living room opens to the dining room - ideal for entertaining, and a comfortable 1st floor den makes a great place to relax and unwind. Upstairs, find bright bedrooms, office space and 3 updated full baths set across the upper levels, including the 2nd floor primary bedroom with en-suite bath with double vanity, custom shower + soaking tub. The finished lower level offers flexible leisure space, plus laundry, storage and a bonus half bath. Multizone HVAC, custom built garage with EV charger, smart home features (security & temp) and more. Beautifully situated on a professionally landscaped property with private patio, raised garden beds, cedar playset and storage shed. With quiet tree-lined streets, and no thru traffic, you won't want to miss this opportunity to enjoy the best of one of Maplewood's most desired locations!

FLOOR PLAN



NOT TO SCALE - This floor plan is provided for illustration purposes only.
Room positions and dimensions are approximate and should be independently measured for accuracy

LIVING IN MAPLEWOOD



Maplewood is a quaint residential community boasting authentic Tudor, Colonial, and Victorian homes, tree-lined streets beautiful parks, and a bustling Village center with vibrant shops, eateries and conveniences.

Maplewood is served by NJ Transit railroad which provides service along the Morris and Essex Line to Newark Broad Street Station and either to New York Penn Station (some stopping at Secaucus Junction) or Hoboken Terminal.



The Robert Northfield Team



Melissa Sheehy
Realtor - Salesperson

Keller Williams Mid-Town Direct
MSheehy@kw.com
Cell: (973) 342-1369
Office: (973) 762-5400
www.RobertNorthfieldRealEstate.com



Robert Northfield
Broker - Salesperson

Keller Williams Mid-Town Direct
RobertNorthfield@kw.com
Cell: (973) 544-8001
Office: (973) 761-4100
www.RobertNorthfieldRealEstate.com



Helping People on the Move since 1997!