

Home report

22925 Collridge Drive, Land O'Lakes, Pasco County, Florida,
United States, 34639



Total Area: 3932 sq. ft

Floor 1: 3221 sq. ft, Floor 2: 711 sq. ft

Excluded: Outdoor Porch 563 sq. ft, Outdoor Porch Screen 508 sq. ft, Garage 585 sq. ft, Walls: 277 sq. ft

Property summary

**2** Floors

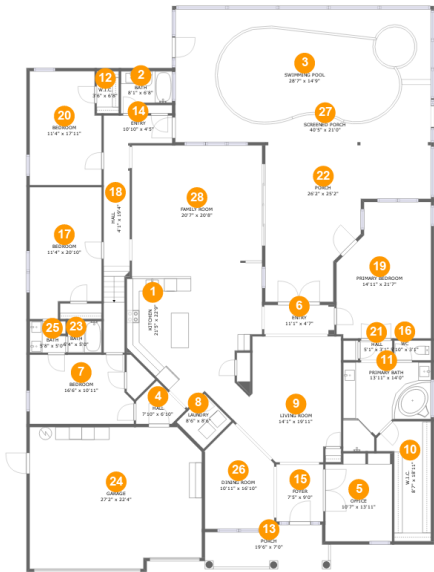
**4** Bedrooms

**4** Bathrooms

**1** Garages

Home report

22925 Collridge Drive, Land O'Lakes, Pasco County, Florida,
United States, 34639



Room dimensions

Floor 1 Total:3221sqft Excluded: 1656sqft

#		Max Dimensions	sqft	Included
1	Kitchen	21'5" x 22'9"	367 sq. ft	Yes
2	Bath	8'1" x 6'8"	46 sq. ft	Yes
3	Swimming Pool	28'7" x 14'9"	342 sq. ft	No
4	Hall	7'10" x 6'10"	35 sq. ft	Yes
5	Office	10'7" x 13'11"	141 sq. ft	Yes
6	Entry	11'1" x 4'7"	51 sq. ft	Yes
7	Bedroom	16'6" x 10'11"	170 sq. ft	Yes
8	Laundry	8'6" x 8'6"	38 sq. ft	Yes
9	Living Room	14'1" x 19'11"	265 sq. ft	Yes
10	W.I.C.	8'7" x 18'11"	120 sq. ft	Yes
11	Primary Bath	13'11" x 14'0"	153 sq. ft	Yes

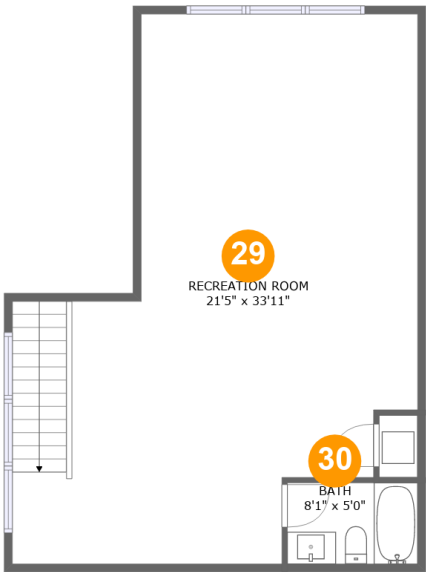
Home report

**22925 Collridge Drive, Land O'Lakes, Pasco County, Florida,
United States, 34639**

#		Max Dimensions	sqft	Included
12	W.I.C.	3'6" x 6'8"	23 sq. ft	Yes
13	Porch	19'6" x 7'0"	121 sq. ft	No
14	Entry	10'10" x 4'5"	47 sq. ft	Yes
15	Foyer	7'5" x 9'0"	67 sq. ft	Yes
16	WC	5'10" x 3'1"	18 sq. ft	Yes
17	Bedroom	11'4" x 20'10"	217 sq. ft	Yes
18	Hall	4'1" x 19'4"	127 sq. ft	Yes
19	Primary Bedroom	14'11" x 21'7"	289 sq. ft	Yes
20	Bedroom	11'4" x 17'11"	197 sq. ft	Yes
21	Hall	5'1" x 3'1"	16 sq. ft	Yes
22	Porch	26'2" x 25'2"	442 sq. ft	No
23	Bath	5'4" x 5'0"	26 sq. ft	Yes
24	Garage	27'2" x 22'4"	586 sq. ft	No
25	Bath	5'8" x 5'0"	25 sq. ft	Yes
26	Dining Room	10'11" x 16'10"	153 sq. ft	Yes
27	Screened Porch	40'5" x 21'0"	850 sq. ft	No
28	Family Room	20'7" x 20'8"	427 sq. ft	Yes

Home report

22925 Collridge Drive, Land O'Lakes, Pasco County, Florida,
United States, 34639



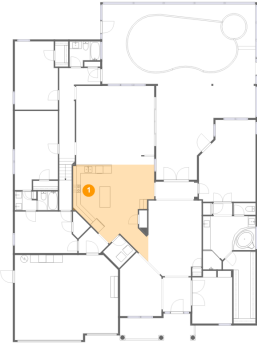
Room dimensions

Floor 2 Total:711sqft Excluded: 0sqft

#		Max Dimensions	sqft	Included
29	Recreation Room	21'5" x 33'11"	654 sq. ft	Yes
30	Bath	8'1" x 5'0"	40 sq. ft	Yes

22925 Collridge Drive, Land O'Lakes, Pasco County, Florida,
United States, 34639

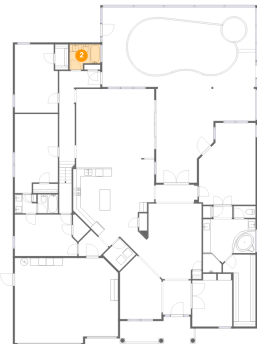
1 Floor 1 - Kitchen



Max Dimensions: 21'5" x
22'9"
Calculated Area: 367 sq. ft
Included: Yes

Heated: Yes
Finished: Yes
Enclosed: Yes
Contiguous:
Yes
Permitted: Yes
Wet space: No
Addition: No
Conversion: No

2 Floor 1 - Bath



Max Dimensions: 8'1" x 6'8"
Calculated Area: 46 sq. ft
Included: Yes

Heated: Yes
Finished: Yes
Enclosed: Yes
Contiguous: Yes
Permitted: Yes
Wet space: Yes
Addition: No
Conversion: No

22925 Collridge Drive, Land O'Lakes, Pasco County, Florida,
United States, 34639

3 Floor 1 - Swimming Pool



Max Dimensions: 28'7" x 14'9"
Calculated Area: 342 sq. ft
Included: No

Heated: No
Finished: No
Enclosed: No
Contiguous: Yes
Permitted: No
Wet space: No
Addition: No
Conversion: No

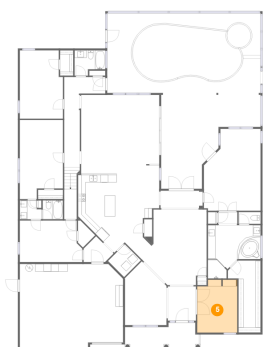
4 Floor 1 - Hall



Max Dimensions: 7'10" x 6'10"
Calculated Area: 35 sq. ft
Included: Yes

Heated: Yes
Finished: Yes
Enclosed: Yes
Contiguous: Yes
Permitted: Yes
Wet space: No
Addition: No
Conversion: No

5 Floor 1 - Office



Max Dimensions: 10'7" x 13'11"
Calculated Area: 141 sq. ft
Included: Yes

Heated: Yes
Finished: Yes
Enclosed: Yes
Contiguous: Yes
Permitted: Yes
Wet space: No
Addition: No
Conversion: No

Home report

22925 Collridge Drive, Land O'Lakes, Pasco County, Florida,
United States, 34639

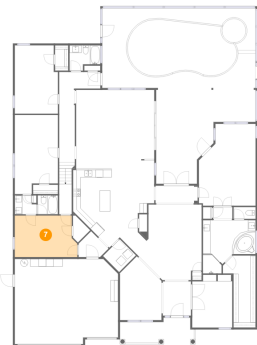
6 Floor 1 - Entry



Max Dimensions: 11'1" x 4'7"
Calculated Area: 51 sq. ft
Included: Yes

Heated: Yes
Finished: Yes
Enclosed: Yes
Contiguous: Yes
Permitted: Yes
Wet space: No
Addition: No
Conversion: No

7 Floor 1 - Bedroom



Max Dimensions: 16'6" x 10'11"
Calculated Area: 170 sq. ft
Included: Yes

Heated: Yes
Finished: Yes
Enclosed: Yes
Contiguous: Yes
Permitted: Yes
Wet space: No
Addition: No
Conversion: No

8 Floor 1 - Laundry



Max Dimensions: 8'6" x 8'6"
Calculated Area: 38 sq. ft
Included: Yes

Heated: Yes
Finished: Yes
Enclosed: Yes
Contiguous: Yes
Permitted: Yes
Wet space: No
Addition: No
Conversion: No

22925 Collridge Drive, Land O'Lakes, Pasco County, Florida,
United States, 34639

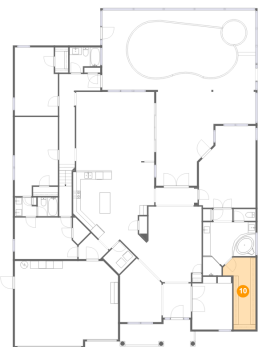
9 Floor 1 - Living Room



Max Dimensions: 14'1" x 19'11"
Calculated Area: 265 sq. ft
Included: Yes

Heated: Yes
Finished: Yes
Enclosed: Yes
Contiguous: Yes
Permitted: Yes
Wet space: No
Addition: No
Conversion: No

10 Floor 1 - W.I.C.



Max Dimensions: 8'7" x 18'11"
Calculated Area: 120 sq. ft
Included: Yes

Heated: Yes
Finished: Yes
Enclosed: Yes
Contiguous: Yes
Permitted: Yes
Wet space: No
Addition: No
Conversion: No

11 Floor 1 - Primary Bath



Max Dimensions: 13'11" x 14'0"
Calculated Area: 153 sq. ft
Included: Yes

Heated: Yes
Finished: Yes
Enclosed: Yes
Contiguous: Yes
Permitted: Yes
Wet space: Yes
Addition: No
Conversion: No

22925 Collridge Drive, Land O'Lakes, Pasco County, Florida,
United States, 34639

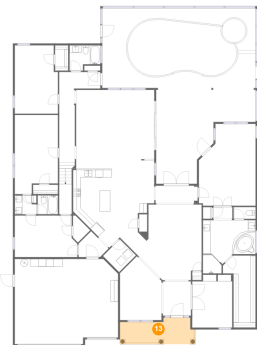
12 Floor 1 - W.I.C.



Max Dimensions: 3'6" x 6'8"
Calculated Area: 23 sq. ft
Included: Yes

Heated: Yes
Finished: Yes
Enclosed: Yes
Contiguous: Yes
Permitted: Yes
Wet space: No
Addition: No
Conversion: No

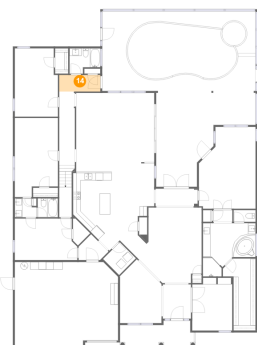
13 Floor 1 - Porch



Max Dimensions: 19'6" x 7'0"
Calculated Area: 121 sq. ft
Included: No

Heated: No
Finished: Yes
Enclosed: No
Contiguous: Yes
Permitted: Yes
Wet space: No
Addition: No
Conversion: No

14 Floor 1 - Entry



Max Dimensions: 10'10" x 4'5"
Calculated Area: 47 sq. ft
Included: Yes

Heated: Yes
Finished: Yes
Enclosed: Yes
Contiguous: Yes
Permitted: Yes
Wet space: No
Addition: No
Conversion: No

22925 Collridge Drive, Land O'Lakes, Pasco County, Florida,
United States, 34639

15 Floor 1 - Foyer



Max Dimensions: 7'5" x 9'0"
Calculated Area: 67 sq. ft
Included: Yes

Heated: Yes
Finished: Yes
Enclosed: Yes
Contiguous: Yes
Permitted: Yes
Wet space: No
Addition: No
Conversion: No

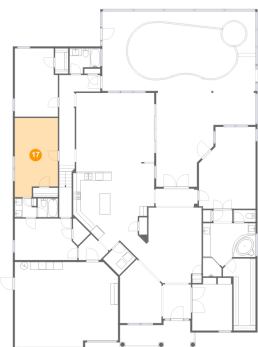
16 Floor 1 - WC



Max Dimensions: 5'10" x 3'1"
Calculated Area: 18 sq. ft
Included: Yes

Heated: Yes
Finished: Yes
Enclosed: Yes
Contiguous: Yes
Permitted: Yes
Wet space: Yes
Addition: No
Conversion: No

17 Floor 1 - Bedroom



Max Dimensions: 11'4" x 20'10"
Calculated Area: 217 sq. ft
Included: Yes

Heated: Yes
Finished: Yes
Enclosed: Yes
Contiguous: Yes
Permitted: Yes
Wet space: No
Addition: No
Conversion: No

22925 Collridge Drive, Land O'Lakes, Pasco County, Florida,
United States, 34639

18 Floor 1 - Hall



Max Dimensions: 4'1" x 19'4"
Calculated Area: 127 sq. ft
Included: Yes

Heated: Yes
Finished: Yes
Enclosed: Yes
Contiguous: Yes
Permitted: Yes
Wet space: No
Addition: No
Conversion: No

19 Floor 1 - Primary Bedroom



Max Dimensions: 14'11" x 21'7"
Calculated Area: 289 sq. ft
Included: Yes

Heated: Yes
Finished: Yes
Enclosed: Yes
Contiguous: Yes
Permitted: Yes
Wet space: No
Addition: No
Conversion: No

20 Floor 1 - Bedroom



Max Dimensions: 11'4" x 17'11"
Calculated Area: 197 sq. ft
Included: Yes

Heated: Yes
Finished: Yes
Enclosed: Yes
Contiguous: Yes
Permitted: Yes
Wet space: No
Addition: No
Conversion: No

22925 Collridge Drive, Land O'Lakes, Pasco County, Florida,
United States, 34639

21 Floor 1 - Hall



Max Dimensions: 5'1" x 3'1"
Calculated Area: 16 sq. ft
Included: Yes

Heated: Yes
Finished: Yes
Enclosed: Yes
Contiguous: Yes
Permitted: Yes
Wet space: No
Addition: No
Conversion: No

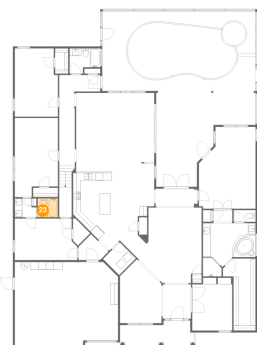
22 Floor 1 - Porch



Max Dimensions: 26'2" x
25'2"
Calculated Area: 442 sq. ft
Included: No

Heated: No
Finished: Yes
Enclosed: No
Contiguous:
Yes
Permitted: Yes
Wet space: No
Addition: No
Conversion: No

23 Floor 1 - Bath



Max Dimensions: 5'4" x 5'0"
Calculated Area: 26 sq. ft
Included: Yes

Heated: Yes
Finished: Yes
Enclosed: Yes
Contiguous: Yes
Permitted: Yes
Wet space: Yes
Addition: No
Conversion: No

22925 Collridge Drive, Land O'Lakes, Pasco County, Florida,
United States, 34639

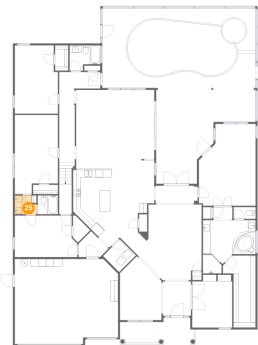
24 Floor 1 - Garage



Max Dimensions: 27'2" x 22'4"
Calculated Area: 586 sq. ft
Included: No

Heated: No
Finished: No
Enclosed: Yes
Contiguous: Yes
Permitted: Yes
Wet space: No
Addition: No
Conversion: No

25 Floor 1 - Bath



Max Dimensions: 5'8" x 5'0"
Calculated Area: 25 sq. ft
Included: Yes

Heated: Yes
Finished: Yes
Enclosed: Yes
Contiguous: Yes
Permitted: Yes
Wet space: Yes
Addition: No
Conversion: No

26 Floor 1 - Dining Room



Max Dimensions: 10'11" x 16'10"
Calculated Area: 153 sq. ft
Included: Yes

Heated: Yes
Finished: Yes
Enclosed: Yes
Contiguous: Yes
Permitted: Yes
Wet space: No
Addition: No
Conversion: No

22925 Collridge Drive, Land O'Lakes, Pasco County, Florida,
United States, 34639

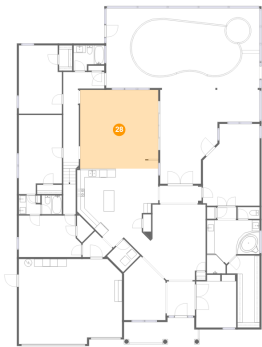
27 Floor 1 - Screened Porch



Max Dimensions: 40'5" x 21'0"
Calculated Area: 850 sq. ft
Included: No

Heated: No
Finished: Yes
Enclosed: No
Contiguous: Yes
Permitted: Yes
Wet space: No
Addition: No
Conversion: No

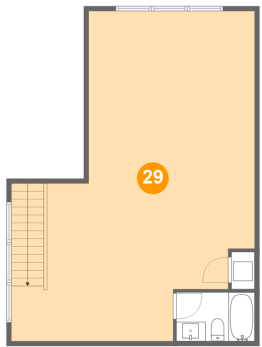
28 Floor 1 - Family Room



Max Dimensions: 20'7" x 20'8"
Calculated Area: 427 sq. ft
Included: Yes

Heated: Yes
Finished: Yes
Enclosed: Yes
Contiguous: Yes
Permitted: Yes
Wet space: No
Addition: No
Conversion: No

29 Floor 2 - Recreation Room

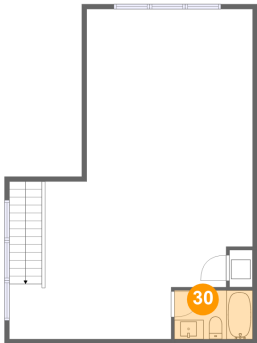


Max Dimensions: 21'5" x 33'11"
Calculated Area: 654 sq. ft
Included: Yes

Heated: Yes
Finished: Yes
Enclosed: Yes
Contiguous: Yes
Permitted: Yes
Wet space: No
Addition: No
Conversion: No

22925 Collridge Drive, Land O'Lakes, Pasco County, Florida,
United States, 34639

30 Floor 2 - Bath



Max Dimensions: 8'1" x 5'0"
Calculated Area: 40 sq. ft
Included: Yes

Heated: Yes
Finished: Yes
Enclosed: Yes
Contiguous: Yes
Permitted: Yes
Wet space: Yes
Addition: No
Conversion: No