



51 Edgewood Avenue

West Orange, NJ



2,723 Sq. Ft.

www.51edgewoodave.com



VICTORIA
CARTER
GROUP





Classic Charm

Nestled away on a quiet, tree-lined street in a thriving residential community, this nine-room, split level – with three bedrooms, 2.1 baths and modern eat-in kitchen – promises the very best in comfortable suburban living.

A deep side foyer with hardwood floor, coat closet and recessed lighting welcomes you to this fine home. A broad archway opens to the living room, and hardwood stairs run to the second and lower levels.

The living room features a hardwood floor, recessed lighting and an entire wall of custom cabinets and bookshelves. Framed by a pair of double-hung windows, a large picture windows overlooks the beautifully landscaped front yard.

Open to the living room for a front-to-back flow that brightens and expands both areas, the dining room includes a hardwood floor, overhead light fixture and four large windows set in the side and rear walls. A wide archway opens to the kitchen.

Situated off the foyer, the powder room is equipped with a ceramic tile floor, beadboard wainscoting; built-in vanity with granite counter top and undermounted sink, wall mirror, two wall sconces and overhead light fixture.





Inviting Warmth

The spacious eat-in kitchen features flat panel cabinets with granite counter tops and a ceramic tile backsplash. Sited for convenience, appliances include a KitchenAid five-burner gas range, built-in KitchenAid microwave, Fisher & Paykel double-drawer dishwasher and KitchenAid refrigerator with cafe doors and freezer drawer. A sliding door opens to the elevated rear deck making indoor/outdoor entertaining a convenient pleasure. A ceramic tile floor, undermounted stainless steel sink with instant hot water and garbage disposal, recessed lighting and breakfast area with floor-to-ceiling wall of pantry cabinets complete the room.





Personal Retreats

Situated on the second level, the primary suite is composed of a spacious bedroom and private full bath. The bedroom features a hardwood floor, three double closets with built-in storage, additional closet with built-in storage and lighted ceiling fan. Set in the front and side walls, four large windows provide comfortable cross breezes. The updated en suite bath is equipped with a tile floor, glass-enclosed shower with tile surround, vanity with integrated sinks, wall mirror, built-in shelving, two wall sconces and overhead light fixture.

The larger of the two secondary bedrooms, bedroom two features a hardwood floor, double closet with built-in storage, second closet with built-in storage, overhead light fixture and large, sliding window with side exposure.



The third bedroom offers a hardwood floor, double walk-in closet with built-in storage, overhead light fixture and windows to the side and rear.

The full hall bath includes a wood grain tile floor, soaking tub with tile surround, glass-enclosed shower with subway tile surround, vanity with integrated sink, wall mirror, light bar and overhead light fixture.

A center foyer with hardwood floor, linen closet, recessed lighting and access to attic storage completes the second level,





The Ground and Lower Levels

Situated on the ground level – and with sufficient space to accommodate multiple activity areas – the family room features neutral wall-to-wall carpeting, recessed lighting, ten large windows and stone accent walls.

The adjacent laundry room is equipped with a laminate tile floor, Samsung washer, Maytag dryer, refrigerator, utility sink, built-in shelving, overhead lighting and water closet with commode.

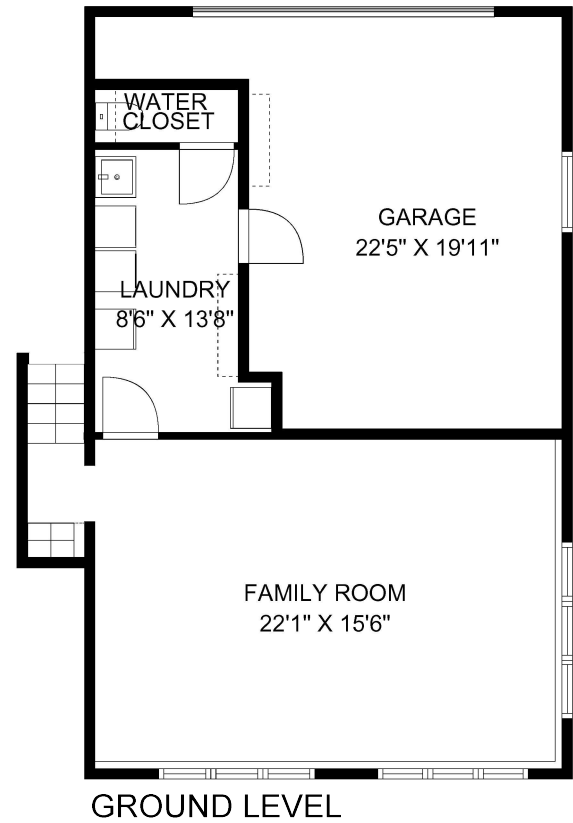
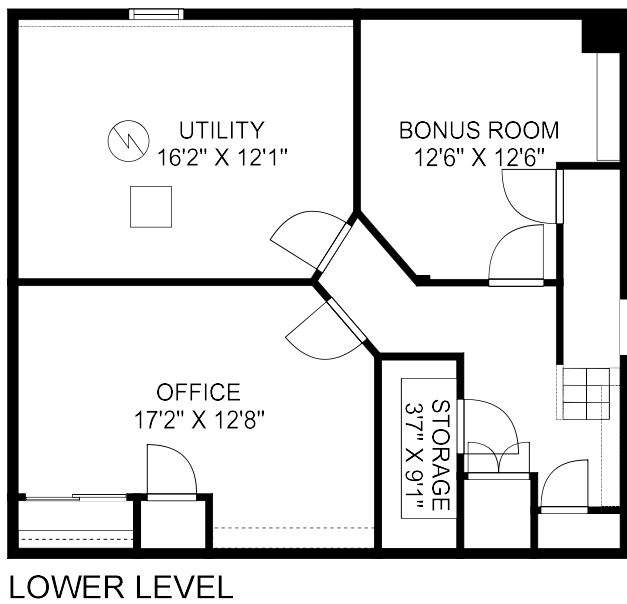
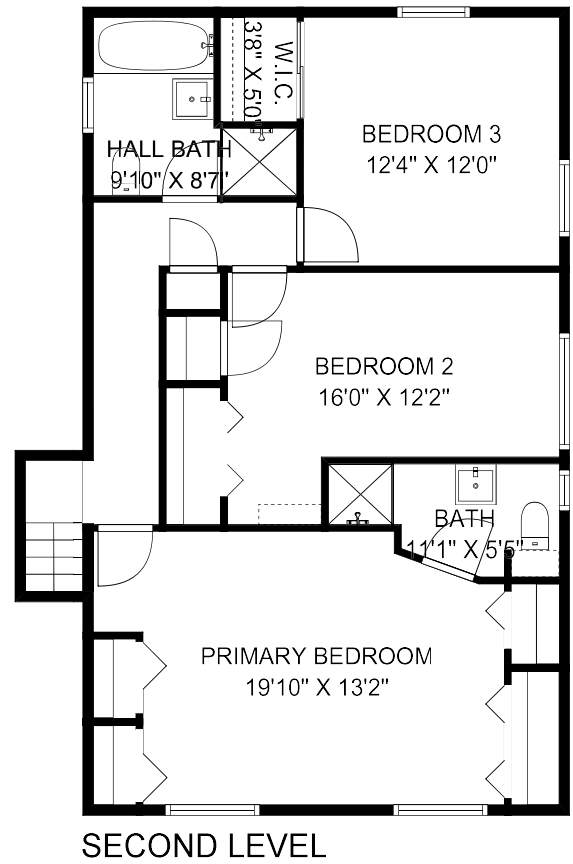
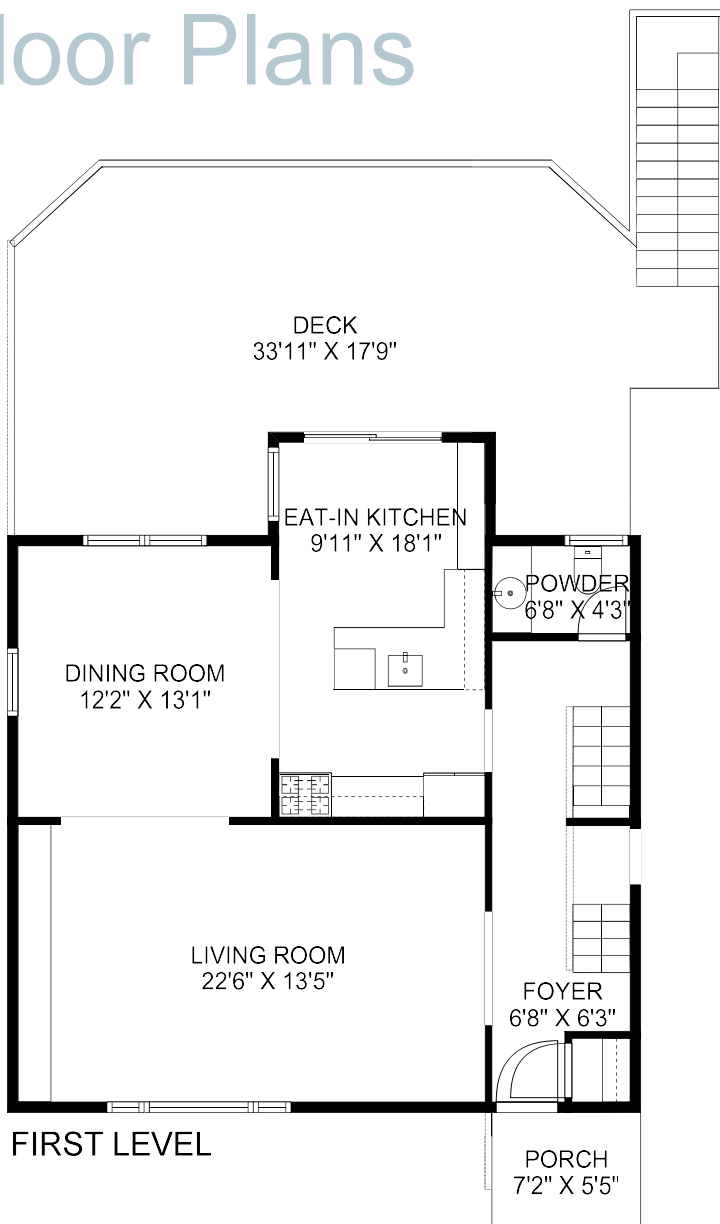
A doorway opens from the laundry room to the one-car garage with power door opener.

Located on the lower level the office has a laminate tile floor, built-in shelving, double closet, additional closet and recessed lighting.

Ideal for use as a children's playroom or exercise room, the bonus room has a laminate tile floor, recessed lighting and closet.

A foyer, with laminate tile floor, cedar closet and overhead light fixture and utility/storage room complete this level.

Floor Plans



NOT TO SCALE: Floor plans are for illustration purposes only.
 Room positions and dimensions are approximate and should be independently measured for accuracy.

Highlights

GENERAL

- Bright and open, nine-room, center hall split level in a thriving and diverse residential community
- Three bedrooms including a primary suite
- Two full baths; one half-bath
- Gourmet eat-in kitchen
- Finished ground level
- Elevated rear deck
- Built-in one-car garage
- Central air-conditioning
- Neutral palette throughout
- Five-minute walk to Jitney running to South Orange train station with Midtown Direct commuter service into Manhattan
- Ten-minute walk to St. Cloud Elementary School
- Only minutes from town, parks, restaurants and shopping including Wholefoods, a new Target and soon-to-open Trader Joe's.
- Five-minute walk to Express Coach bus service into New York City

FIRST LEVEL

- Entry foyer: hardwood floor; coat closet; vaulted ceiling; recessed lighting; open doorway to kitchen; doorway to powder room; hardwood stairs to second and ground levels
- Living room: hardwood floor; recessed lighting; entire wall of built-in cabinets and display/book shelves; picture window, two double-hung windows, front; archways to dining room and entry foyer
- Dining room: hardwood floor; overhead light fixture; two double-hung windows, side; two double-hung windows, rear; archways to kitchen and living room
- Eat-in kitchen: ceramic tile floor; slab door cabinets; granite counter tops; ceramic tile backsplash; KitchenAid five-burner gas range; built-in KitchenAid microwave; Fisher & Paykel double drawer dishwasher; KitchenAid refrigerator with cafe doors and freezer drawer; undermounted stainless steel sink with instant hot water and garbage disposal; breakfast area; crown moulding; recessed lighting; casement window, side; open to dining room; open doorway to entry foyer; sliding door to elevated rear deck
- Powder room: ceramic tile floor; beadboard wainscoting; built-in vanity with granite counter top and undermounted sink; wall mirror; two wall sconces; overhead lighting; double-hung window, rear

SECOND LEVEL

- Bedroom one (primary suite): hardwood floor; three double

- closets with built-in storage; single closet with built-in storage; lighted ceiling fan; two double-hung windows, front; access to en suite bath
- Private full bath (primary suite): tile floor; glass-enclosed shower with tile surround; vanity with integrated sink; wall mirror; built-in shelving; two wall sconces; overhead light fixture; double-hung window, side
- Bedroom two: hardwood floor; double closet with built-in storage; single closet with built-in storage; overhead light fixture; sliding window, side
- Bedroom three: hardwood floor; double walk-in closet with built-in storage; overhead light fixture; double-hung window, side; double-hung window, rear
- Full hall bath: wood grain tile floor; soaking tub with tile surround; glass-enclosed shower with subway tile surround; vanity with integrated sink; wall mirror; light bar; overhead light fixture; double-hung window, side
- Center foyer: hardwood floor; linen closet; recessed lighting; access to attic storage; hardwood stairs to first level

GROUND LEVEL

- Family room: neutral wall-to-wall carpeting; stone accent walls; recessed lighting; six double-hung windows, front; four double-hung windows, side; doorway to laundry room; stairs to first and lower levels
- Laundry room: laminate tile floor; Samsung washer; Maytag dryer; utility sink; recessed refrigerator; overhead lighting; built-in shelving; doorways to garage, water closet and family room
- Water closet: laminate tile floor; commode; overhead light fixture
- One-car garage: power door opener; doorway to laundry room

LOWER LEVEL

- Foyer: laminate tile floor; cedar closet; overhead light fixture; doorways to office, bonus room and utility room; stairs to ground level
- Office: laminate tile floor; built-in shelving; double closet; recessed lighting; casement window, side
- Bonus room: laminate tile floor; recessed lighting; closet
- Storage/utility room: overhead light fixture; casement window, rear

EXTERIOR

- Vinyl siding and stone front elevation
- Paver front walkway
- Elevated rear deck: access to

- kitchen
- Asphalt driveway with paver apron
- Carport with storage
- Deep and private back yard
- Professionally landscaped: established lawns; mature shade trees; decorative shrubbery

IMPROVEMENTS

- Upgraded laundry room – 2025
- Upgraded front gutter system – 2024
- Planted vegetable garden beds – 2024
- Opened wall between kitchen and dining room – 2023
- Repainted dining room, family room, hallways, bedrooms, primary bath and office – 2023
- Refinished hardwood floors in second level hallway and bedrooms two and three – 2023
- Sealed stone floor and installed new carpet in family room – 2023
- Installed new vanity, wall sconces and overhead light fixture in master bath – 2023
- Updated powder room with new wallpaper, wall sconces, overhead light fixture and mirror – 2023
- Installed new drapes in living room, dining room, family room and bedrooms – 2023
- Updated lower level flooring with luxury vinyl tile and uniform doors in basement – 2023

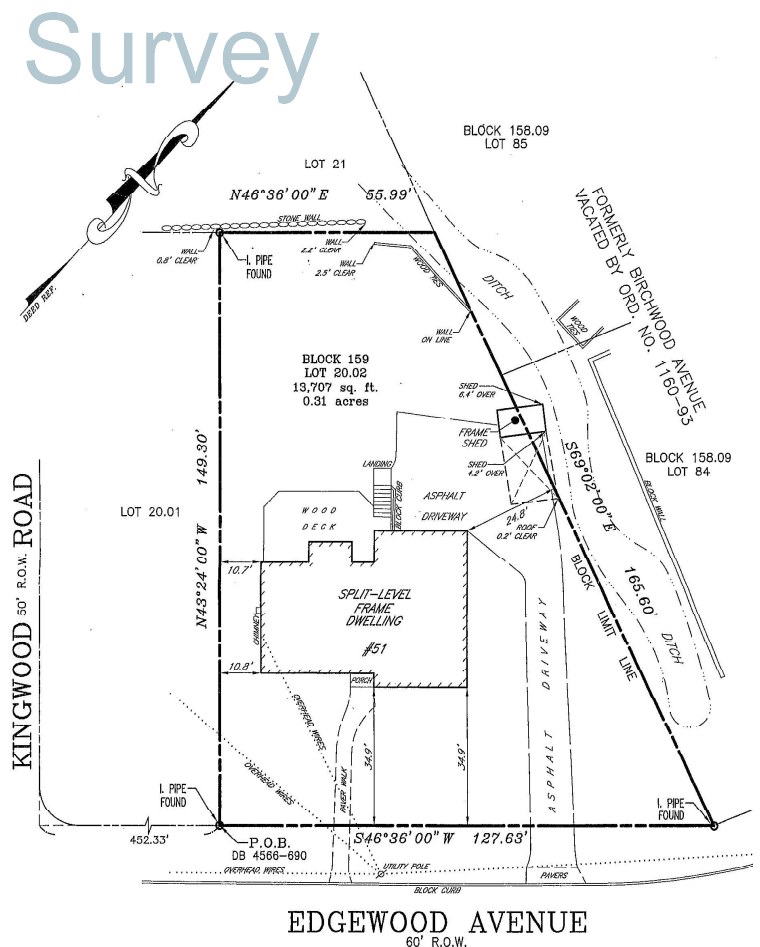
- Installed new sump pump – 2023
- Installed new overhead light fixtures in dining room and bedrooms – 2023
- Installed new perennial plantings in all major garden beds – 2023
- Replaced vent covers in bedrooms, living room, dining room and foyer – 2023

2025 ASSESSMENTS/TAXES

- Land: \$322,800
- Improvements: \$381,300
- Total: \$704,100
- 2025 taxes: \$18,496

AN IDEAL LOCATION

- West Orange is a thriving and diverse community known for its fine homes, excellent schools and vibrant business district. Among West Orange's most popular attractions are the Turtle Back Zoo, Thomas Edison National Historical Park, South Mountain Reservation (the largest park land in Essex County) and Eagle Rock Reservation with a spectacular view of New York City's famed skyline. Located only 12 miles from Manhattan and 20 minutes from Newark Liberty Airport, West Orange also is convenient to major highways including the Garden State Parkway, New Jersey Turnpike and Interstate Route 280.





Victoria Carter

Broker/Sales Associate

Cell: 973-220-3050

Email: Victoria@VictoriaCarter.com

www.victoriacarter.com

Weichert, Realtors • Short Hills Office



Weichert