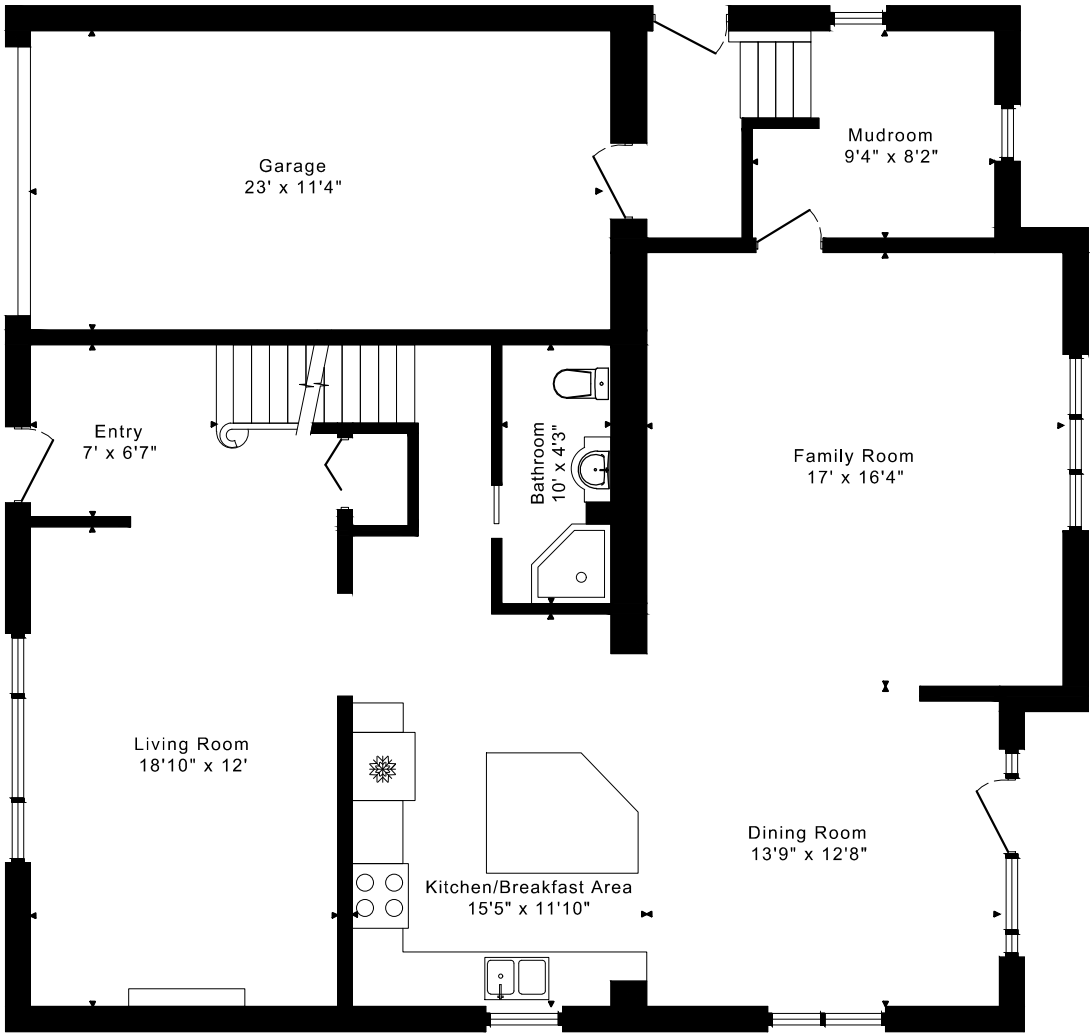
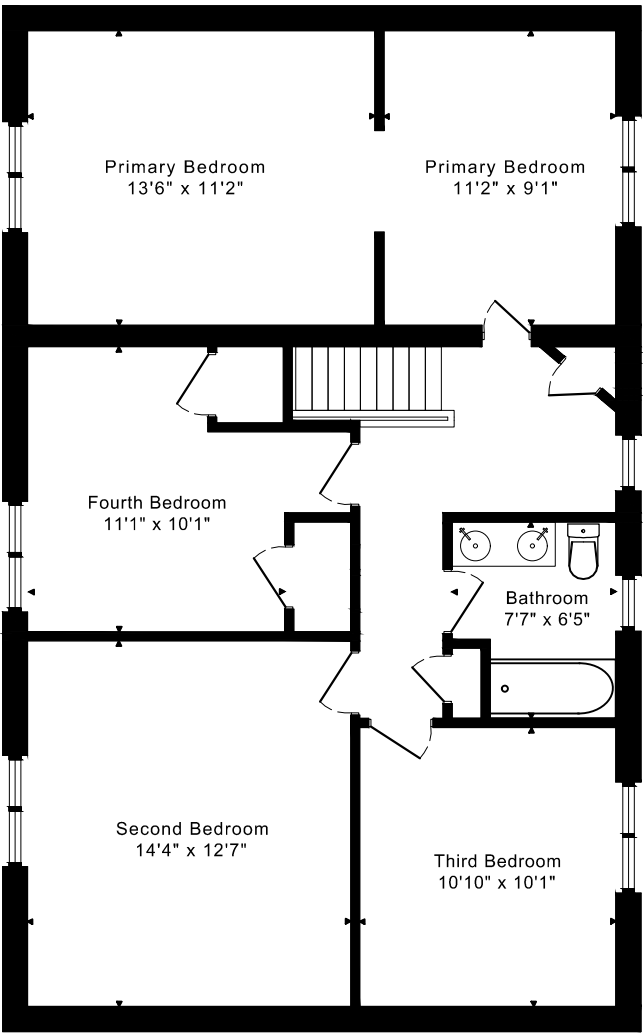


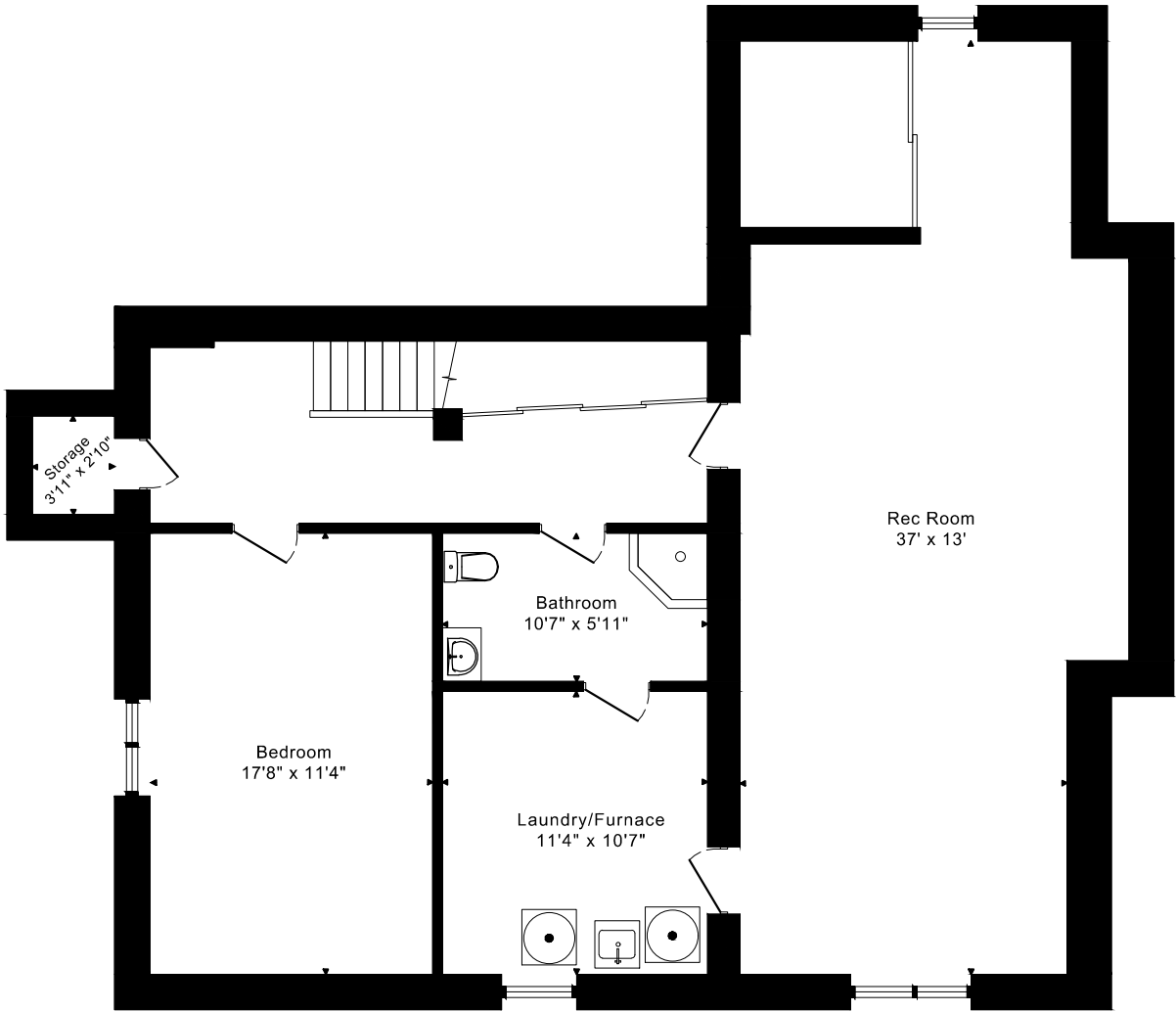
11 URBANDALE AVENUE
FLOOR PLANS



MAIN FLOOR
1345 SQUARE FEET



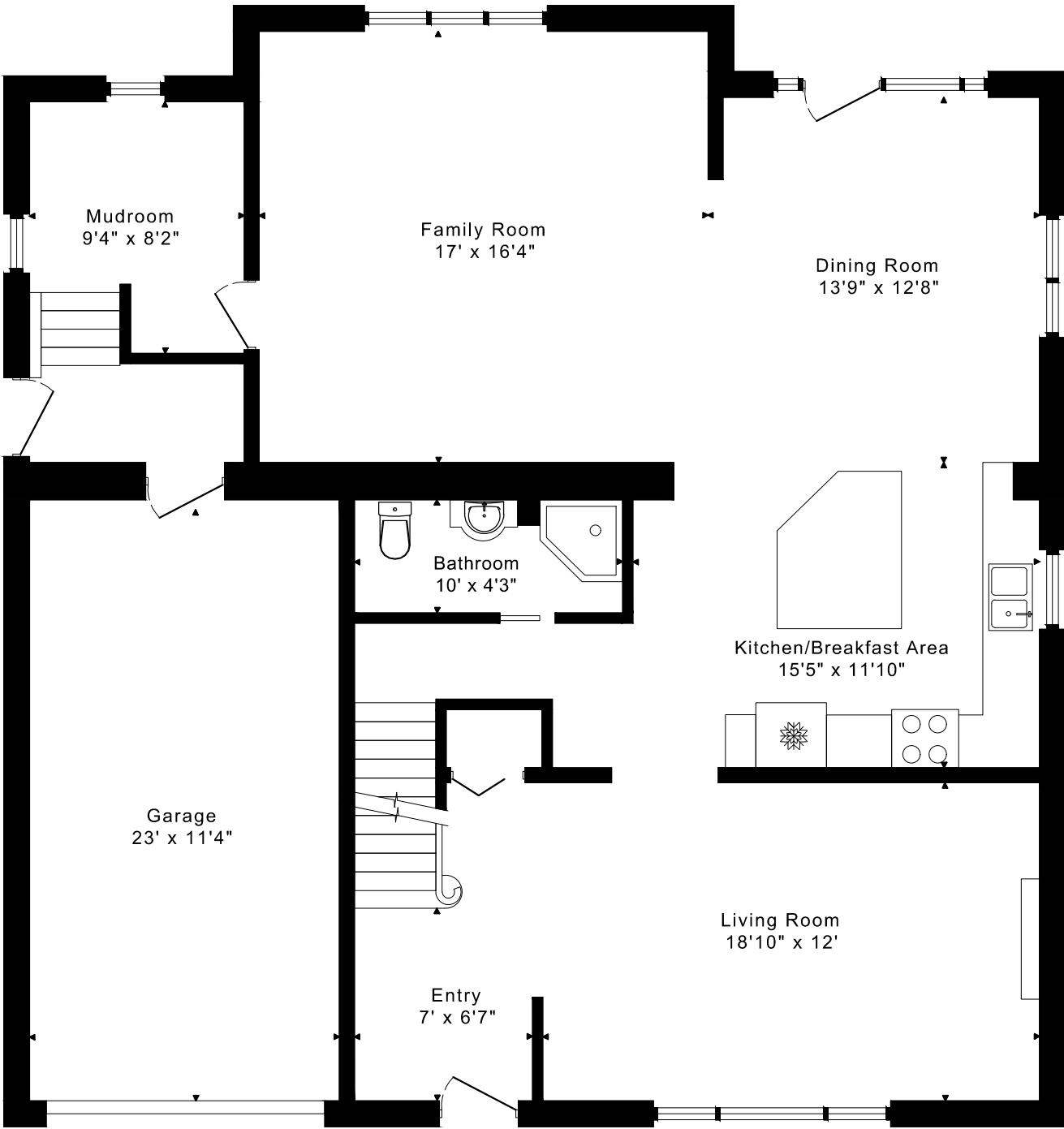
SECOND FLOOR
1005 SQUARE FEET



LOWER FLOOR
1390 SQUARE FEET

11 URBANDALE AVENUE
FLOOR PLANS

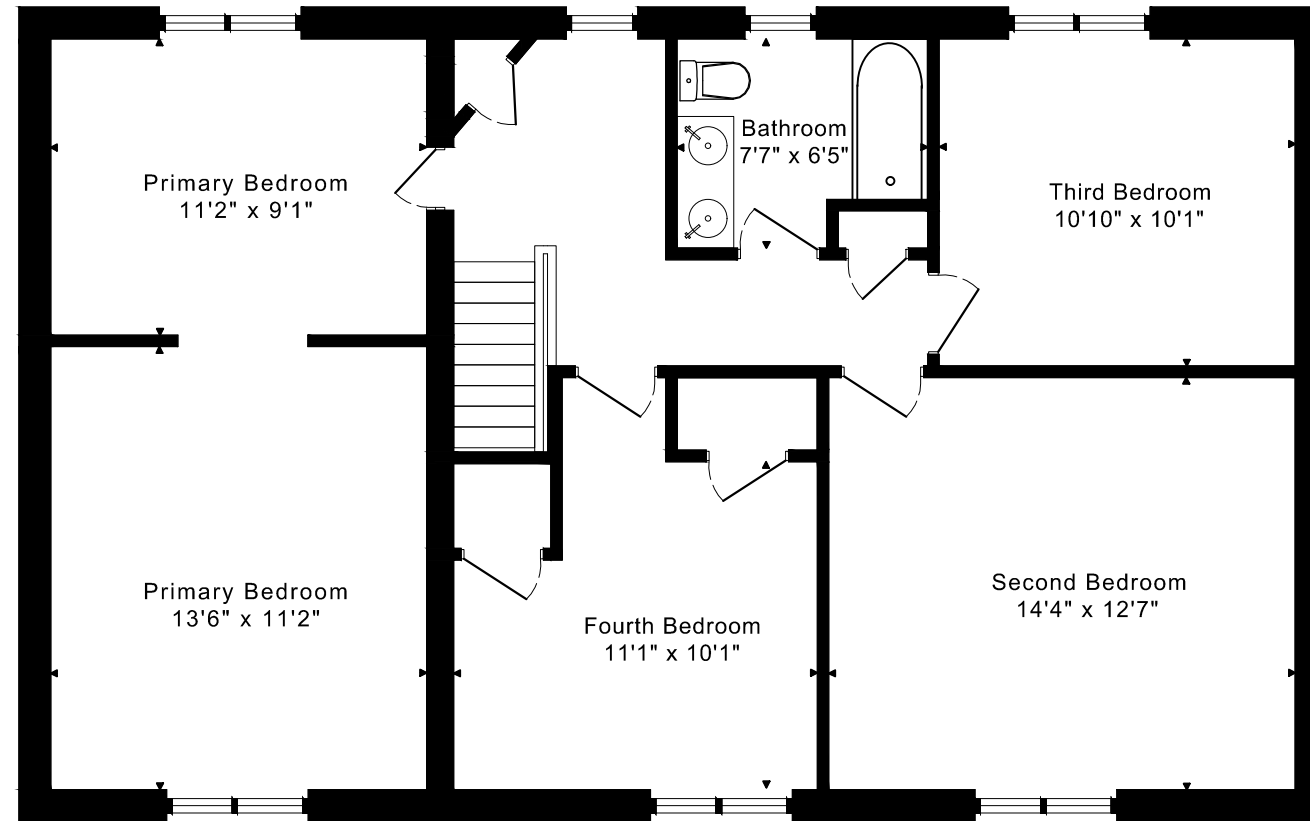
MAIN FLOOR 1345 SQUARE FEET



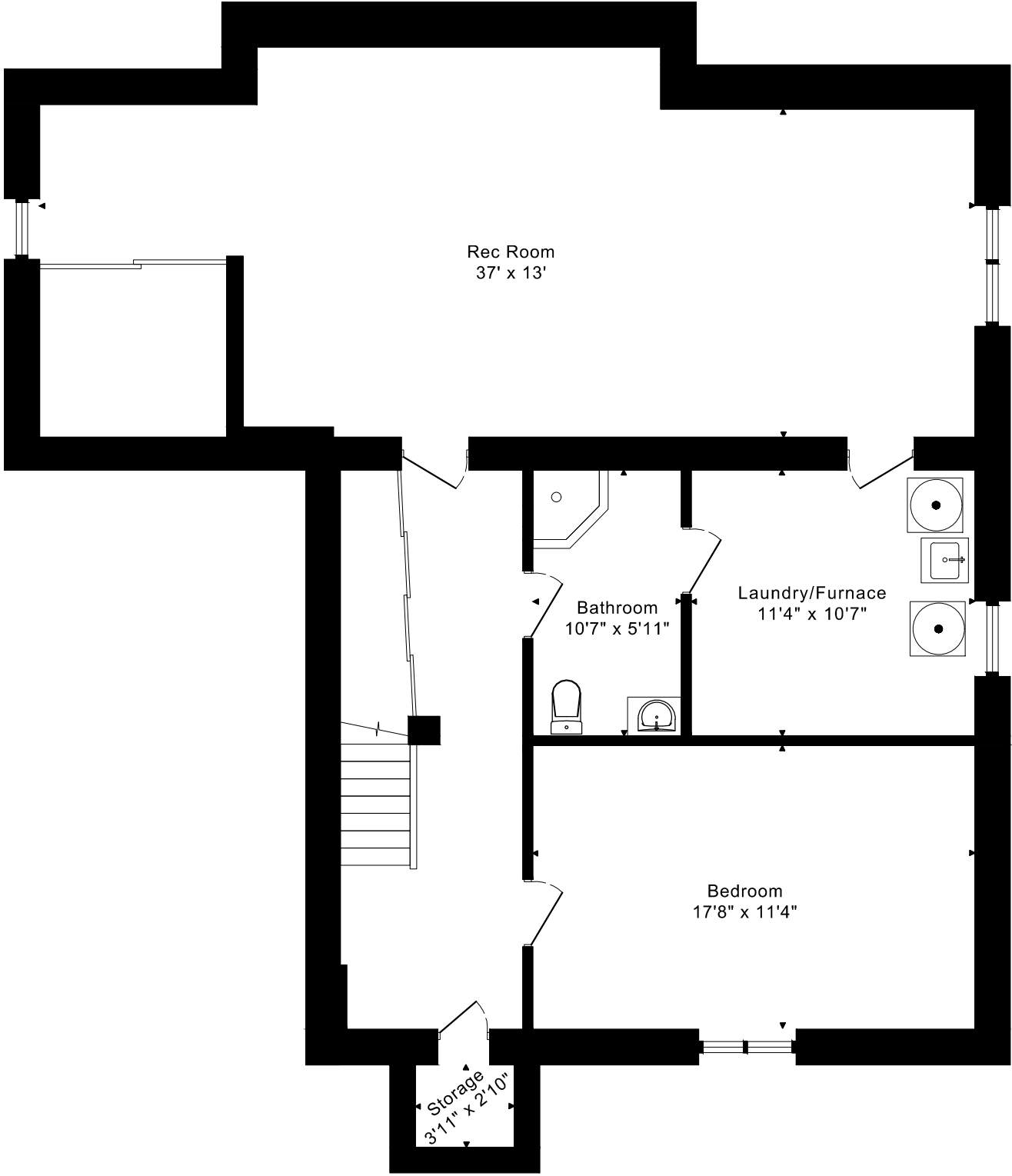
11 URBANDALE AVENUE

FLOOR PLANS

SECOND FLOOR 1420 SQUARE FEET



11 URBANDALE AVENUE
FLOOR PLANS
LOWER FLOOR 1390 SQUARE FEET



11 URBANDALE AVENUE ROOM MEASUREMENTS

Floor	Room	Imperial						Metric [m]		
		Length		Width		Height		Length	Width	Height
		Feet	Inches	Feet	Inches	Feet	Inches			
Second	Primary Bedroom	13	6	11	2	7	9	4,11	3,40	2,36
	Primary Bedroom	11	2	9	1	7	9	3,40	2,77	2,36
	Second Bedroom	14	4	12	7	7	9	4,37	3,84	2,36
	Third Bedroom	10	10	10	1	7	0	3,30	3,07	2,13
	Fourth Bedroom	11	1	10	1	7	9	3,38	3,07	2,36
	Bathroom	7	7	6	5	7	9	2,31	1,96	2,36
Main	Entry	7	0	6	7	8	1	2,13	2,01	2,46
	Living Room	18	10	12	0	8	1	5,74	3,66	2,46
	Dining Room	13	9	12	8	8	1	4,19	3,86	2,46
	Kitchen/Breakfast Area	15	5	11	10	8	1	4,70	3,61	2,46
	Family Room	17	0	16	4	8	1	5,18	4,98	2,46
	Mudroom	9	4	8	2	8	1	2,84	2,49	2,46
	Bathroom	10	0	4	3	8	1	3,05	1,30	2,46
	Garage	23	0	11	4	8	1	7,01	3,45	2,46
Lower	Rec Room	37	0	13	0	7	0	11,28	3,96	2,13
	Bedroom	17	8	11	4	7	0	5,38	3,45	2,13
	Bathroom	10	7	5	11	7	0	3,23	1,80	2,13
	Laundry/Furnace	11	4	10	7	7	0	3,45	3,23	2,13
	Storage	3	11	2	10	7	0	1,19	0,86	2,13

The following is a disclaimer regarding the approximate nature of dimensions and floor areas listed in this document:

Disclaimer:

The dimensions and floor areas listed in this document are provided as an estimate only and are intended to be used for illustration purposes only. These measurements are not necessarily meant to be a perfect representation of the actual space.

Notes regarding measurement methods and accuracy:

The utilization of laser measurement technology during the 3D model capturing process at the location provides an accurate representation of floor plans, with a typical margin of error of 3-5%. For the most accurate and official measurement data, it is advised to consult official documents such as MPAC records, builder's pre-construction plans, or data from certified measurement companies.

Exterior wall thickness is included in the calculation of the overall square footage and is considered as a component of the footprint. The wall thickness measurement is obtained onsite whenever possible, or estimated in the event where obtaining onsite measurements is not possible, such as in the case of condominium buildings where wall thickness may vary throughout the building.