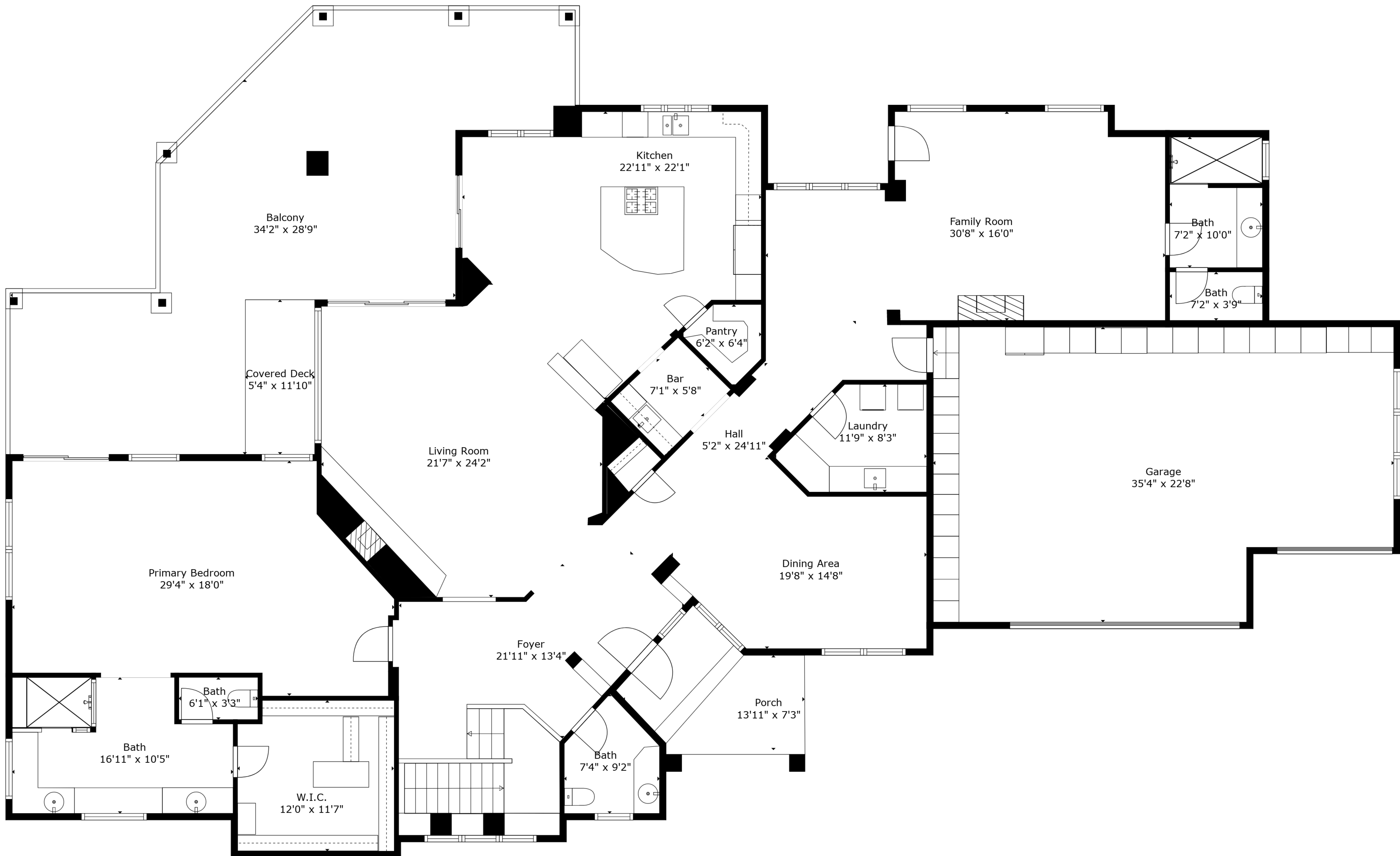


**TOTAL: 5356 sq. ft**

BELOW GROUND: 2299 sq. ft, FLOOR 2: 3057 sq. ft

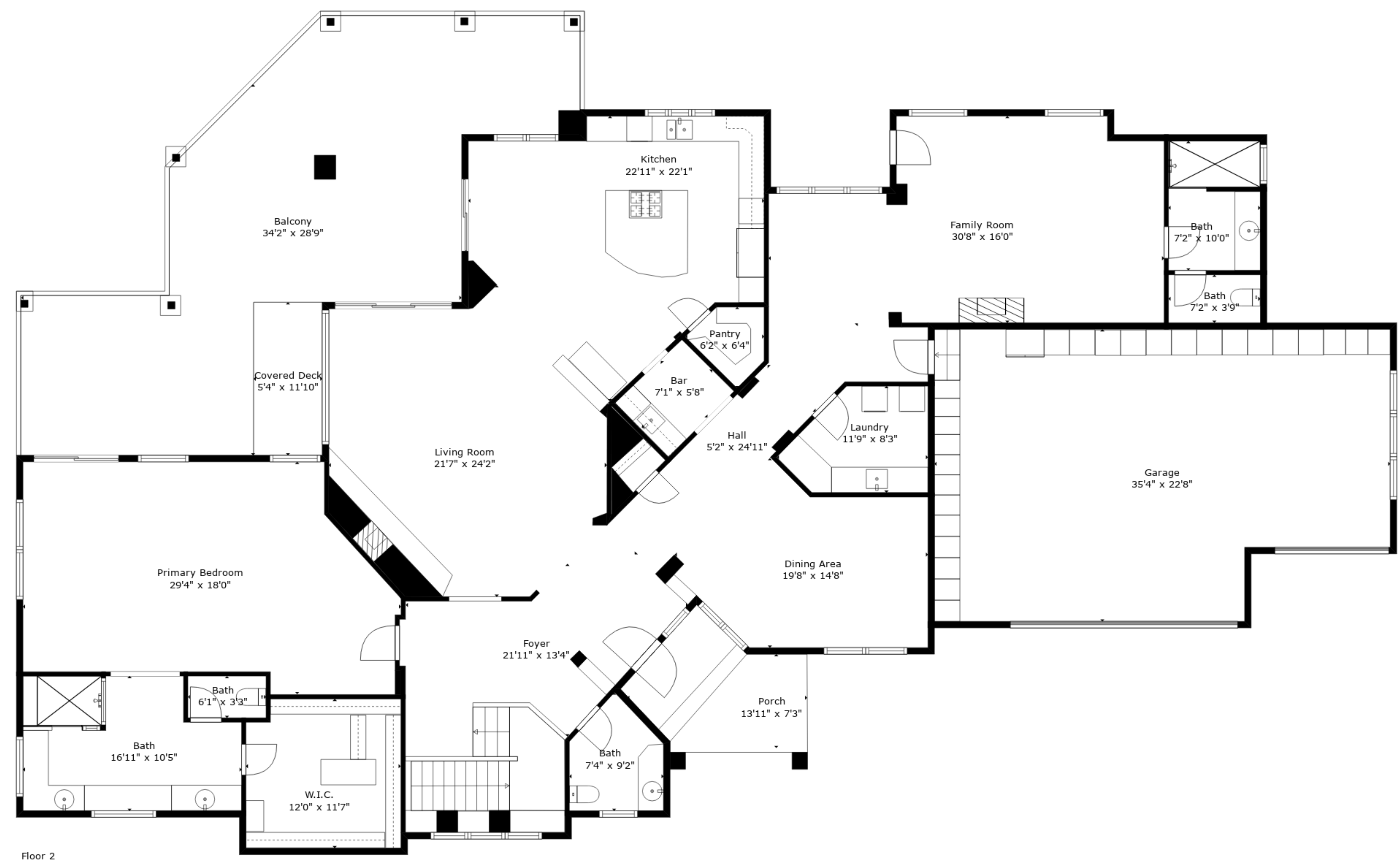
EXCLUDED AREAS: STORAGE: 63 sq. ft, WINE CELLAR: 61 sq. ft, UTILITY: 149 sq. ft,  
PATIO: 660 sq. ft, COVERED PATIO: 278 sq. ft, GARAGE: 735 sq. ft,  
COVERED DECK: 63 sq. ft, BALCONY: 739 sq. ft, PORCH: 110 sq. ft  
WALLS: 325 sq. ft



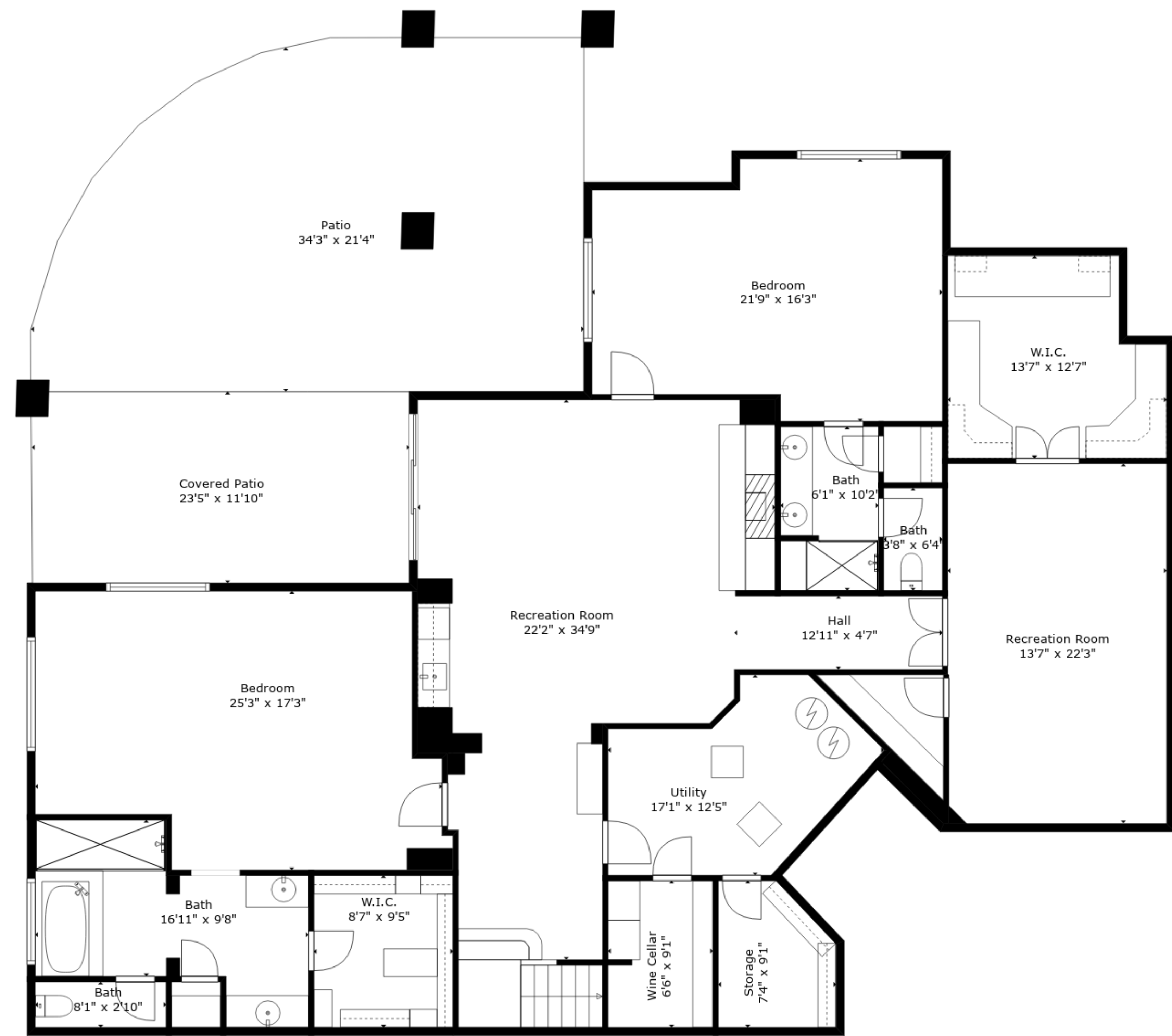
**TOTAL: 5356 sq. ft**

BELOW GROUND: 2299 sq. ft, FLOOR 2: 3057 sq. ft

EXCLUDED AREAS: STORAGE: 63 sq. ft, WINE CELLAR: 61 sq. ft, UTILITY: 149 sq. ft,  
PATIO: 660 sq. ft, COVERED PATIO: 278 sq. ft, GARAGE: 735 sq. ft,  
COVERED DECK: 63 sq. ft, BALCONY: 739 sq. ft, PORCH: 110 sq. ft  
WALLS: 325 sq. ft



Floor 2



Floor 1

**TOTAL: 5356 sq. ft**

BELOW GROUND: 2299 sq. ft, FLOOR 2: 3057 sq. ft

EXCLUDED AREAS: STORAGE: 63 sq. ft, WINE CELLAR: 61 sq. ft, UTILITY: 149 sq. ft,  
 PATIO: 660 sq. ft, COVERED PATIO: 278 sq. ft, GARAGE: 735 sq. ft,  
 COVERED DECK: 63 sq. ft, BALCONY: 739 sq. ft, PORCH: 110 sq. ft  
 WALLS: 325 sq. ft