



637 Broad Street

Bloomfield, NJ

3 

2.1 

1,797 Sq. Ft.

www.637BroadStreet.com



VICTORIA
CARTER
GROUP



Classic Style

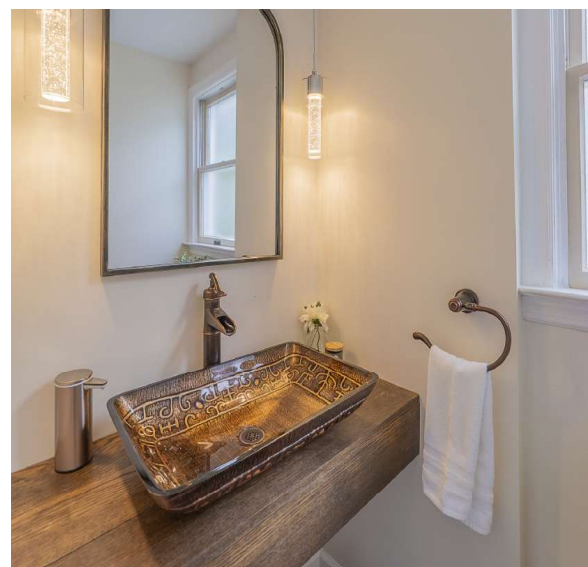
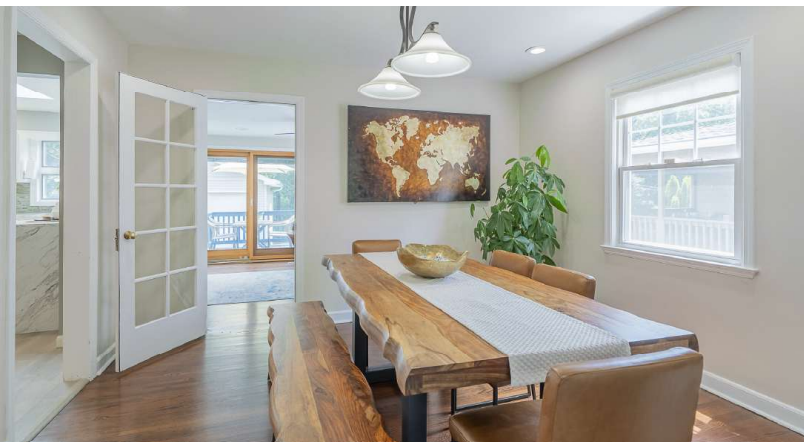
A deep entry foyer, with hardwood floor, coat closet and overhead lighting, welcomes visitors to this fine home. A broad archway opens to the living room, and a doorway accesses the kitchen.

The spacious living room boasts a hardwood floor, lighted ceiling fan, recessed lighting and wood-burning fireplace, with tile hearth, framed by a floor-to-ceiling stone accent wall.

Open to the living room, the dining room features a hardwood floor, overhead light fixture, recessed lighting and window with side exposure. An open doorway accesses the kitchen, and a French door leads to the family room.

A comfortable gathering spot, the sunny family room offers a hardwood floor, ceiling fan and recessed lighting. Set in the two exterior walls, six large windows join with a double French door opening to the elevated rear deck to bathe the room in warm natural light. An open doorway leads to the kitchen.

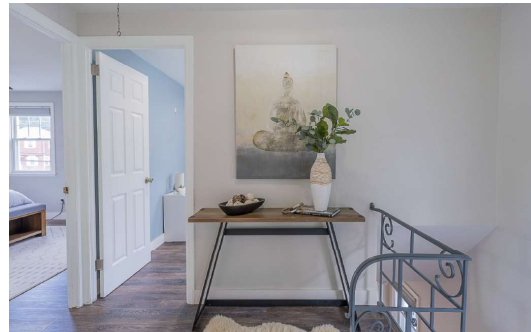
Located off the kitchen, the powder room is equipped with a ceramic tile floor, floating vanity with vessel sink, wall mirror, two pendant light fixtures and recessed lighting.



Inviting Warmth

Flawlessly remodeled and certain to please even the most dedicated home chef, the eat-in kitchen features underlit raised panel cabinets with rich granite counter tops and a ceramic tile backsplash. Sited for convenience, the matching suite of stainless steel appliances includes a five-burner gas range, built-in microwave, dishwasher and refrigerator with freezer drawer and cafe doors with water and ice dispenser. The spacious breakfast area is ideally suited for casual family dining. Doorways open to the dining room, family room, powder room and stairwell to a side entrance and lower level. A built-in trash compactor, undermounted stainless steel sink, recessed lighting, double casement window and skylight provide all the right finishing touches.





The Second and Lower Levels



Stairs leading to the second level open to a center foyer with linen closet, overhead lighting and Bessler stairs to attic storage

The primary bedroom features a cedar-lined double closet and lighted ceiling fan supplemented by recessed lighting. A pair of windows overlooking the front lawn combines with a third window in the side wall to provide comfortable cross breezes.

Each of two additional bedrooms includes a cedar-lined closet, lighted ceiling fan and windows on multiple walls.

The full hall bath is equipped with a tile floor, shower over tub with tile surround, floating vanity with integrated sink, lighted wall mirror and recessed lighting.



Situated on the lower level, the office/exercise room presents a tile floor, knotty pine paneled walls with framed chalkboards, exercise equipment, two double cedar closets, an additional closet and recessed lighting.

The adjacent full bath/laundry room is equipped with a tile floor, glass-enclosed shower with tile surround, wall sink, lighted mirror, washer and dryer.

A storage/utility room, with handyman's work station, completes the lower level.

Highlights

GENERAL

- Bright and open, eight room, side hall colonial in a thriving and diverse residential community
- Three bedrooms
- Two full baths; one half-bath
- Eat-in kitchen
- Finished lower level
- LED high-hat lighting
- Elevated rear deck with retractable awning
- Detached two-car garage:
- Dedicated heating and cooling system for year-round comfort
- Portable generator with separate sub-panel
- Meticulously maintained in-ground sprinkler system
- Neutral palette throughout
- Loft storage and plenty of built-in cabinets
- Minutes from town, parks, schools, restaurants, shopping and Midtown Direct commuter train service into Manhattan

FIRST LEVEL

- Entry foyer: hardwood floor; coat closet; overhead light fixture; archway to living room; open doorway to kitchen
- Living room: hardwood floor; wood-burning fireplace with tile hearth, heavy wooden mantel and floor-to-ceiling stone accent wall; recessed lighting; lighted ceiling fan; two double-hung windows, front; open to dining room; archway to entry foyer
- Dining room: hardwood floor; overhead light fixture; recessed lighting; double-hung window, side; open doorway to kitchen; French door to family room; open to living room
- Family room: hardwood floor; ceiling fan; recessed lighting; four casement windows, side; two double-hung windows rear; open doorway to kitchen; French door to dining room; sliding door to rear deck
- Eat-in kitchen: raised panel cabinets with underlighting; granite counter tops; ceramic tile backsplash; matching stainless steel appliances – five-burner gas range, built-in microwave, dishwasher and refrigerator with cafe doors, freezer drawer and water/ice dispenser; trash compactor; undermounted stainless steel sink; breakfast area; recessed lighting; skylight; double casement window, rear; open doorways to dining room, family room and entry foyer; doorways to powder room and stairs to lower level with side egress to driveway
- Powder room: ceramic tile floor; built-in vanity with granite

counter with vessel sink; wall mirror; two pendant light fixtures; recessed lighting

SECOND LEVEL

- Center foyer; linen closet; overhead light fixture; double-hung window, side; Bessler stairs to attic storage; wood-grain laminate stairs to first level
- Primary bedroom: cedar-lined double closet; lighted ceiling fan; recessed lighting; two double-hung windows, front; double-hung window, side
- Bedroom two: cedar-lined double closet; lighted ceiling fan; double-hung window, side; double-hung window, rear
- Bedroom three: cedar-lined closet; recessed lighting; double-hung window, front; double-hung window, side
- Full hall bath: tile floor; shower over tub with tile surround; floating vanity with integrated sink; lighted wall mirror; recessed lighting; double-hung window, side

LOWER LEVEL

- Office/exercise room: tile floor; wood wall paneled with framed chalkboards; exercise equipment; two cedar closets; additional closet; recessed lighting; casement window, side; doorway to full bath/laundry room
- Full bath/laundry room: glass-enclosed shower with tile surround; wall sink; lighted mirror; washer; dryer
- Storage/utility room; handy-man's work station

EXTERIOR

- Vinyl siding and stone front elevation
- Paver front walkway
- Elevated rear deck: retractable awning; access to kitchen
- Detached two-car garage: 12 foot ceilings
- Asphalt driveway with paver apron
- Storage shed
- In-ground sprinkler system
- Exterior hot water hose-bib to bathe pets and for the hobbyist in us all
- Portable generator/hookup – never used – sold “as is”
- Professionally landscaped: established lawns; mature shade trees; decorative shrubbery
- Deep and private back yard

IMPROVEMENTS

- Installed new HVAC furnace – 2025
- Installed new exterior floodlights and new front and side entrance sconces – 2025

- Installed new Nest doorbell – 2025
- Installed new floodlights on garage – 2025
- Installed new vented ceiling light and new LED mirror in lower level full bath – 2025
- Painted patio – 2024
- Renovated kitchen: installed new luxury flooring; removed built-in corner desk and replaced with nook table; installed new skylight – 2024
- Installed new whole-home humidifier – 2024
- Installed new roof – 2024
- Installed luxury vinyl flooring, sub-flooring and base moulding throughout second level – 2022
- Installed new double hung picture window, Nest smart thermostat and Nest wired outdoor camera in garage – 2022
- Installed new washer and dryer – 2021
- Installed new smart recessed lighting in office/exercise room – 2021
- Installed recessed lighting on second level – 2019
- Painted primary bedroom – 2019
- Painted bedroom two and installed new ceiling fan – 2019

- Painted bedroom three – 2019
- Installed new linen closet in second level foyer – 2019
- Installed Nest smart learning thermostat on second level – 2019
- Renovated second level full bath: installed new floating vanity/sink, heated, anti-fog and dimmable LED mirror, tub with sliding glass doors, commode and lighting vent – 2019
- Painted living room and installed new fireplace mantel, stone accent wall and recessed lighting – 2018
- Painted dining room and installed new recessed lighting and Nest smart learning thermostat – 2018
- Completely renovated family room: installed new walls, insulation and recessed lighting; painted ceiling – 2018

2024 ASSESSMENTS/TAXES

- Land: \$156,100
- Improvements: \$284,500
- Total: \$440,600
- 2024 taxes: \$14,945

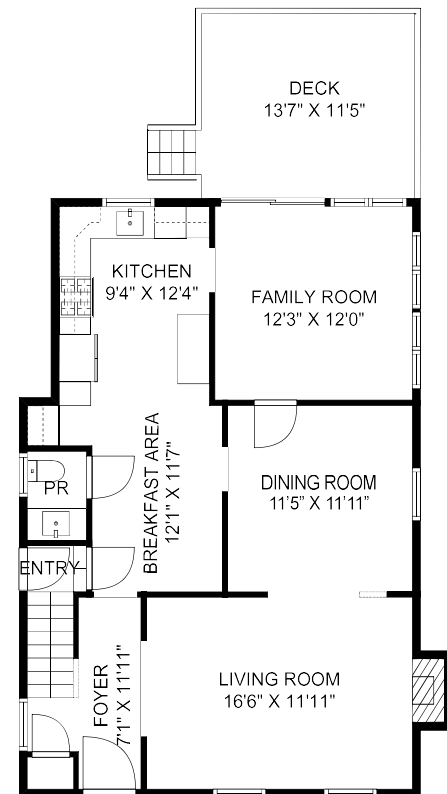
AN IDEAL LOCATION

Home to the Bloomfield College campus of Montclair State

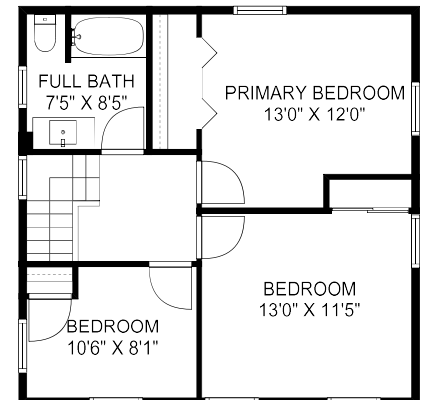
University, Bloomfield is a thriving and diverse community known for its fine homes, vibrant business district and spacious public parks – among them Brookdale Park (the third-largest park in Essex County) and Watsessing Park (the county's fourth-largest) with public access to both passive and active recreational activities such as trails for walking and running, lush groves and extensive lawns, playgrounds, sports fields, track facilities, tennis courts, an archery range and summer concerts. Only a short commute via Midtown Direct trains to New York City and just 17 miles from Newark Liberty Airport, Bloomfield also is convenient to many major highways including the Garden State Parkway, New Jersey Turnpike and Interstate Routes 280 and 78.



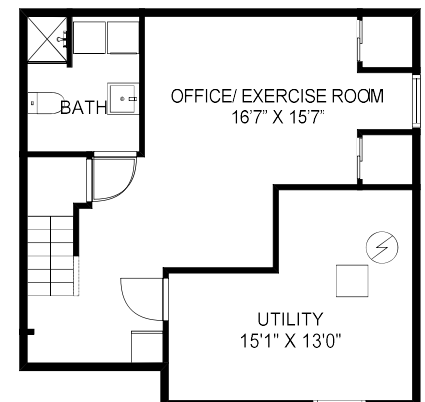
Floor Plan



FIRST LEVEL



SECOND LEVEL



LOWER LEVEL

NOT TO SCALE: Floor plans are for illustration purposes only. Room positions and dimensions are approximate and should be independently measured for accuracy.



201-341-7268
dmalloy@victoriacarter.com
www.victoriacarter.com

Victoria Carter
Broker/Sales Associate

973-220-3050
victoria@victoriavarter.com
www.victoriacarter.com



Weichert, Realtors • Short Hills Office

Weichert®