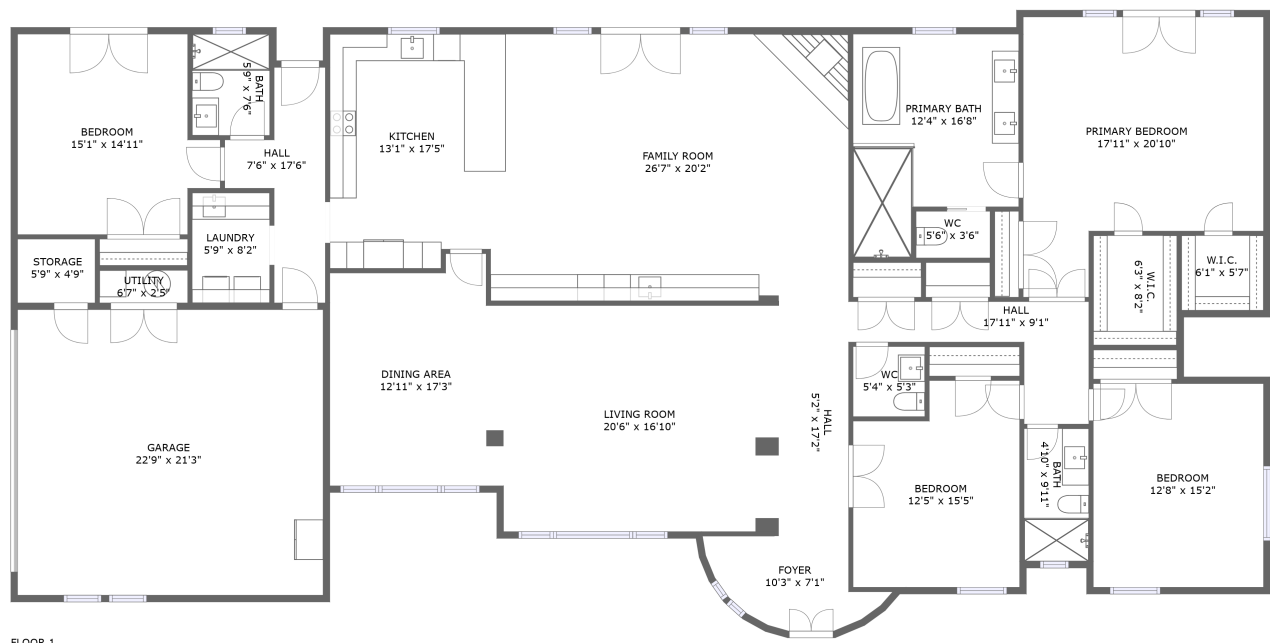


Home report

230 West Morten Avenue, North Central Corridor, Phoenix,
Maricopa County, Arizona, United States, 85021




Total Area: 3135 sq. ft

Floor 1: 3135 sq. ft

Excluded: Garage 483 sq. ft, Storage 27 sq. ft, Walls: 173 sq. ft

Property summary

 1 Floors

 4 Bedrooms

 3 Bathrooms

Home report

**230 West Morten Avenue, North Central Corridor, Phoenix,
Maricopa County, Arizona, United States, 85021**



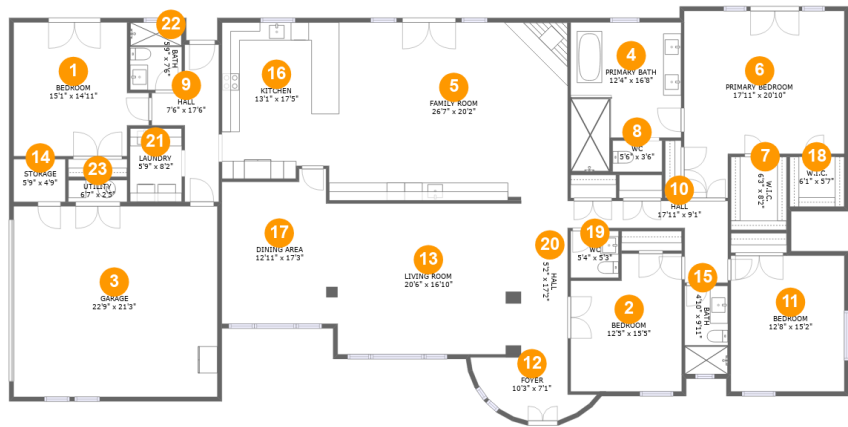
1
Half baths



1
Garages

Home report

230 West Morten Avenue, North Central Corridor, Phoenix,
Maricopa County, Arizona, United States, 85021



Room dimensions

Floor 1 Total:3135sqft Excluded: 510sqft

#		Max Dimensions	sqft	Included
1	Bedroom	15'1" x 14'11"	198 sq. ft	Yes
2	Bedroom	12'5" x 15'5"	174 sq. ft	Yes
3	Garage	22'9" x 21'3"	483 sq. ft	No
4	Primary Bath	12'4" x 16'8"	175 sq. ft	Yes
5	Family Room	26'7" x 20'2"	520 sq. ft	Yes
6	Primary Bedroom	17'11" x 20'10"	309 sq. ft	Yes
7	W.I.C.	6'3" x 8'2"	51 sq. ft	Yes
8	WC	5'6" x 3'6"	19 sq. ft	Yes
9	Hall	7'6" x 17'6"	80 sq. ft	Yes
10	Hall	17'11" x 9'1"	83 sq. ft	Yes
11	Bedroom	12'8" x 15'2"	192 sq. ft	Yes

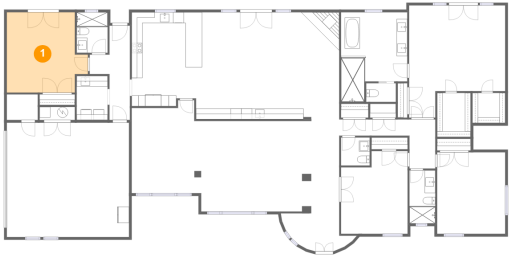
Home report

**230 West Morten Avenue, North Central Corridor, Phoenix,
Maricopa County, Arizona, United States, 85021**

#		Max Dimensions	sqft	Included
12	Foyer	10'3" x 7'1"	69 sq. ft	Yes
13	Living Room	20'6" x 16'10"	345 sq. ft	Yes
14	Storage	5'9" x 4'9"	27 sq. ft	No
15	Bath	4'10" x 9'11"	48 sq. ft	Yes
16	Kitchen	13'1" x 17'5"	215 sq. ft	Yes
17	Dining Area	12'11" x 17'3"	206 sq. ft	Yes
18	W.I.C.	6'1" x 5'7"	34 sq. ft	Yes
19	WC	5'4" x 5'3"	28 sq. ft	Yes
20	Hall	5'2" x 17'2"	89 sq. ft	Yes
21	Laundry	5'9" x 8'2"	47 sq. ft	Yes
22	Bath	5'9" x 7'6"	43 sq. ft	Yes
23	Utility	6'7" x 2'5"	16 sq. ft	Yes

230 West Morten Avenue, North Central Corridor, Phoenix,
Maricopa County, Arizona, United States, 85021

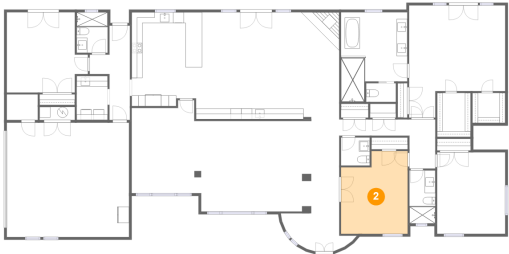
1 Floor 1 - Bedroom



Max Dimensions: 15'1" x 14'11"
Calculated Area: 198 sq. ft
Included: Yes

Heated: Yes
Finished: Yes
Enclosed: Yes
Contiguous: Yes
Permitted: Yes
Wet space: No
Addition: No
Conversion: No

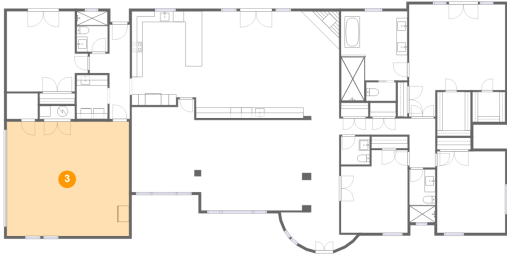
2 Floor 1 - Bedroom



Max Dimensions: 12'5" x 15'5"
Calculated Area: 174 sq. ft
Included: Yes

Heated: Yes
Finished: Yes
Enclosed: Yes
Contiguous: Yes
Permitted: Yes
Wet space: No
Addition: No
Conversion: No

3 Floor 1 - Garage



Max Dimensions: 22'9" x 21'3"
Calculated Area: 483 sq. ft
Included: No

Heated: No
Finished: No
Enclosed: Yes
Contiguous: Yes
Permitted: Yes
Wet space: No
Addition: No
Conversion: No

4 Floor 1 - Primary Bath



Max Dimensions: 12'4" x 16'8"
Calculated Area: 175 sq. ft
Included: Yes

Heated: Yes
Finished: Yes
Enclosed: Yes
Contiguous: Yes
Permitted: Yes
Wet space: Yes
Addition: No
Conversion: No

5 Floor 1 - Family Room

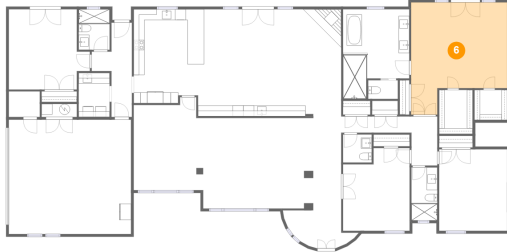


Max Dimensions: 26'7" x 20'2"
Calculated Area: 520 sq. ft
Included: Yes

Heated: Yes
Finished: Yes
Enclosed: Yes
Contiguous: Yes
Permitted: Yes
Wet space: No
Addition: No
Conversion: No

230 West Morten Avenue, North Central Corridor, Phoenix,
Maricopa County, Arizona, United States, 85021

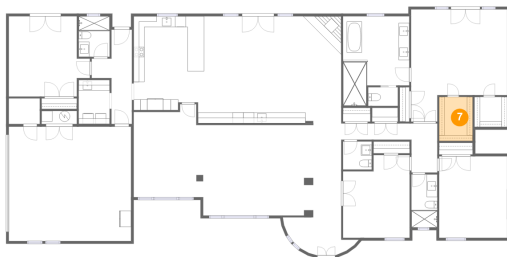
6 Floor 1 - Primary Bedroom



Max Dimensions: 17'11" x 20'10"
Calculated Area: 309 sq. ft
Included: Yes

Heated: Yes
Finished: Yes
Enclosed: Yes
Contiguous: Yes
Permitted: Yes
Wet space: No
Addition: No
Conversion: No

7 Floor 1 - W.I.C.



Max Dimensions: 6'3" x 8'2"
Calculated Area: 51 sq. ft
Included: Yes

Heated: Yes
Finished: Yes
Enclosed: Yes
Contiguous: Yes
Permitted: Yes
Wet space: No
Addition: No
Conversion: No

8 Floor 1 - WC

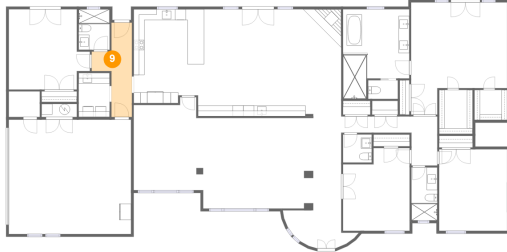


Max Dimensions: 5'6" x 3'6"
Calculated Area: 19 sq. ft
Included: Yes

Heated: Yes
Finished: Yes
Enclosed: Yes
Contiguous: Yes
Permitted: Yes
Wet space: Yes
Addition: No
Conversion: No

230 West Morten Avenue, North Central Corridor, Phoenix,
Maricopa County, Arizona, United States, 85021

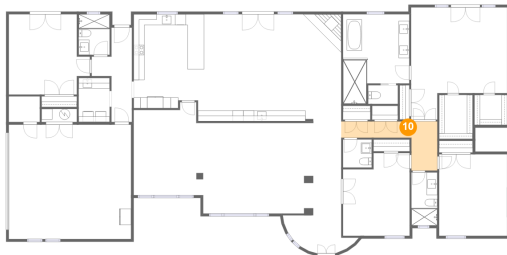
9 Floor 1 - Hall



Max Dimensions: 7'6" x 17'6"
Calculated Area: 80 sq. ft
Included: Yes

Heated: Yes
Finished: Yes
Enclosed: Yes
Contiguous: Yes
Permitted: Yes
Wet space: No
Addition: No
Conversion: No

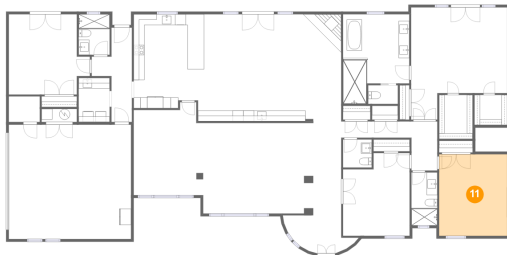
10 Floor 1 - Hall



Max Dimensions: 17'11" x 9'1"
Calculated Area: 83 sq. ft
Included: Yes

Heated: Yes
Finished: Yes
Enclosed: Yes
Contiguous: Yes
Permitted: Yes
Wet space: No
Addition: No
Conversion: No

11 Floor 1 - Bedroom

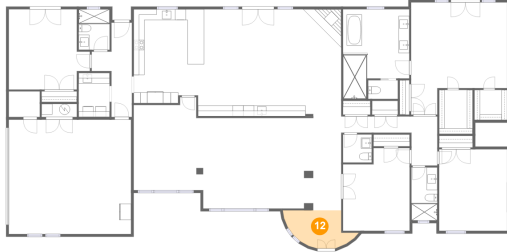


Max Dimensions: 12'8" x 15'2"
Calculated Area: 192 sq. ft
Included: Yes

Heated: Yes
Finished: Yes
Enclosed: Yes
Contiguous: Yes
Permitted: Yes
Wet space: No
Addition: No
Conversion: No

230 West Morten Avenue, North Central Corridor, Phoenix,
Maricopa County, Arizona, United States, 85021

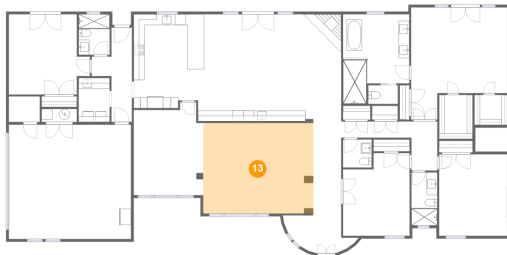
12 Floor 1 - Foyer



Max Dimensions: 10'3" x 7'1"
Calculated Area: 69 sq. ft
Included: Yes

Heated: Yes
Finished: Yes
Enclosed: Yes
Contiguous: Yes
Permitted: Yes
Wet space: No
Addition: No
Conversion: No

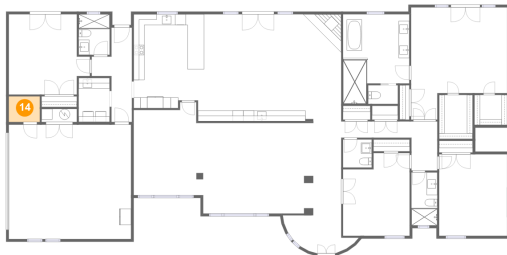
13 Floor 1 - Living Room



Max Dimensions: 20'6" x 16'10"
Calculated Area: 345 sq. ft
Included: Yes

Heated: Yes
Finished: Yes
Enclosed: Yes
Contiguous: Yes
Permitted: Yes
Wet space: No
Addition: No
Conversion: No

14 Floor 1 - Storage



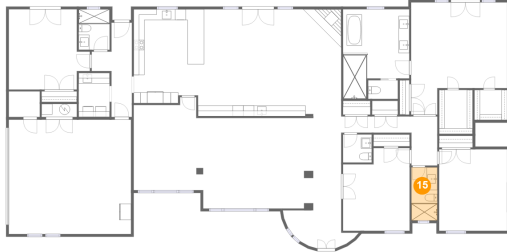
Max Dimensions: 5'9" x 4'9"
Calculated Area: 27 sq. ft
Included: No

Heated: No
Finished: Yes
Enclosed: No
Contiguous: Yes
Permitted: Yes
Wet space: No
Addition: No
Conversion: No

Home report

230 West Morten Avenue, North Central Corridor, Phoenix,
Maricopa County, Arizona, United States, 85021

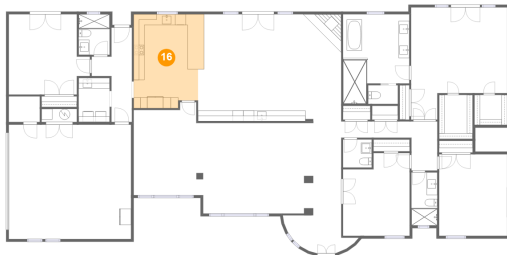
15 Floor 1 - Bath



Max Dimensions: 4'10" x 9'11"
Calculated Area: 48 sq. ft
Included: Yes

Heated: Yes
Finished: Yes
Enclosed: Yes
Contiguous: Yes
Permitted: Yes
Wet space: Yes
Addition: No
Conversion: No

16 Floor 1 - Kitchen



Max Dimensions: 13'1" x 17'5"
Calculated Area: 215 sq. ft
Included: Yes

Heated: Yes
Finished: Yes
Enclosed: Yes
Contiguous: Yes
Permitted: Yes
Wet space: No
Addition: No
Conversion: No

17 Floor 1 - Dining Area

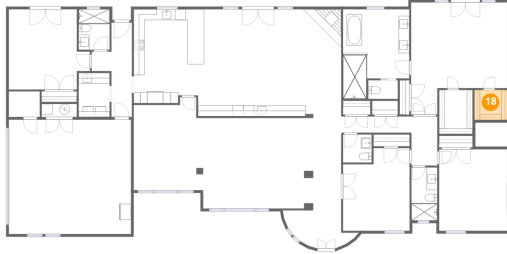


Max Dimensions: 12'11" x 17'3"
Calculated Area: 206 sq. ft
Included: Yes

Heated: Yes
Finished: Yes
Enclosed: Yes
Contiguous: Yes
Permitted: Yes
Wet space: No
Addition: No
Conversion: No

230 West Morten Avenue, North Central Corridor, Phoenix,
Maricopa County, Arizona, United States, 85021

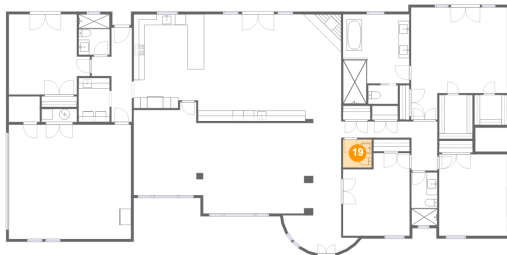
18 Floor 1 - W.I.C.



Max Dimensions: 6'1" x 5'7"
Calculated Area: 34 sq. ft
Included: Yes

Heated: Yes
Finished: Yes
Enclosed: Yes
Contiguous: Yes
Permitted: Yes
Wet space: No
Addition: No
Conversion: No

19 Floor 1 - WC



Max Dimensions: 5'4" x 5'3"
Calculated Area: 28 sq. ft
Included: Yes

Heated: Yes
Finished: Yes
Enclosed: Yes
Contiguous: Yes
Permitted: Yes
Wet space: Yes
Addition: No
Conversion: No

20 Floor 1 - Hall



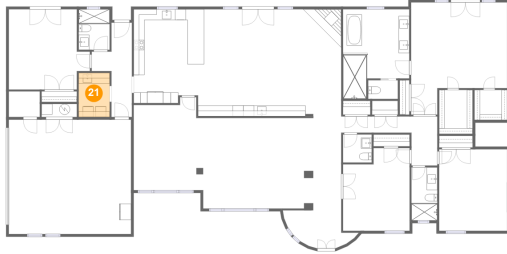
Max Dimensions: 5'2" x
17'2"
Calculated Area: 89 sq. ft
Included: Yes

Heated: Yes
Finished: Yes
Enclosed: Yes
Contiguous:
Yes
Permitted: Yes
Wet space: No
Addition: No
Conversion: No

Home report

230 West Morten Avenue, North Central Corridor, Phoenix,
Maricopa County, Arizona, United States, 85021

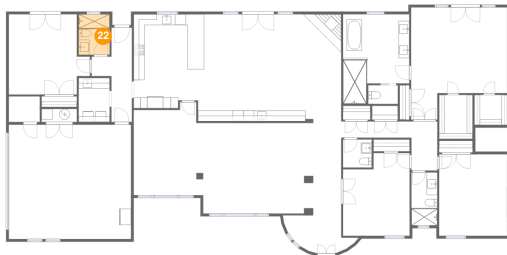
21 Floor 1 - Laundry



Max Dimensions: 5'9" x 8'2"
Calculated Area: 47 sq. ft
Included: Yes

Heated: Yes
Finished: Yes
Enclosed: Yes
Contiguous: Yes
Permitted: Yes
Wet space: No
Addition: No
Conversion: No

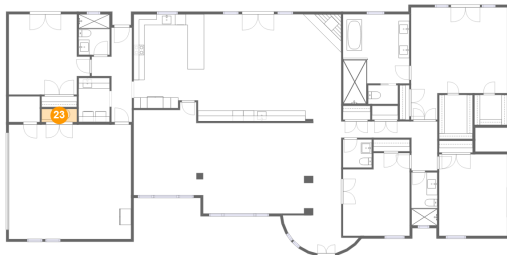
22 Floor 1 - Bath



Max Dimensions: 5'9" x 7'6"
Calculated Area: 43 sq. ft
Included: Yes

Heated: Yes
Finished: Yes
Enclosed: Yes
Contiguous: Yes
Permitted: Yes
Wet space: Yes
Addition: No
Conversion: No

23 Floor 1 - Utility



Max Dimensions: 6'7" x 2'5"
Calculated Area: 16 sq. ft
Included: Yes

Heated: Yes
Finished: Yes
Enclosed: Yes
Contiguous: Yes
Permitted: Yes
Wet space: No
Addition: No
Conversion: No