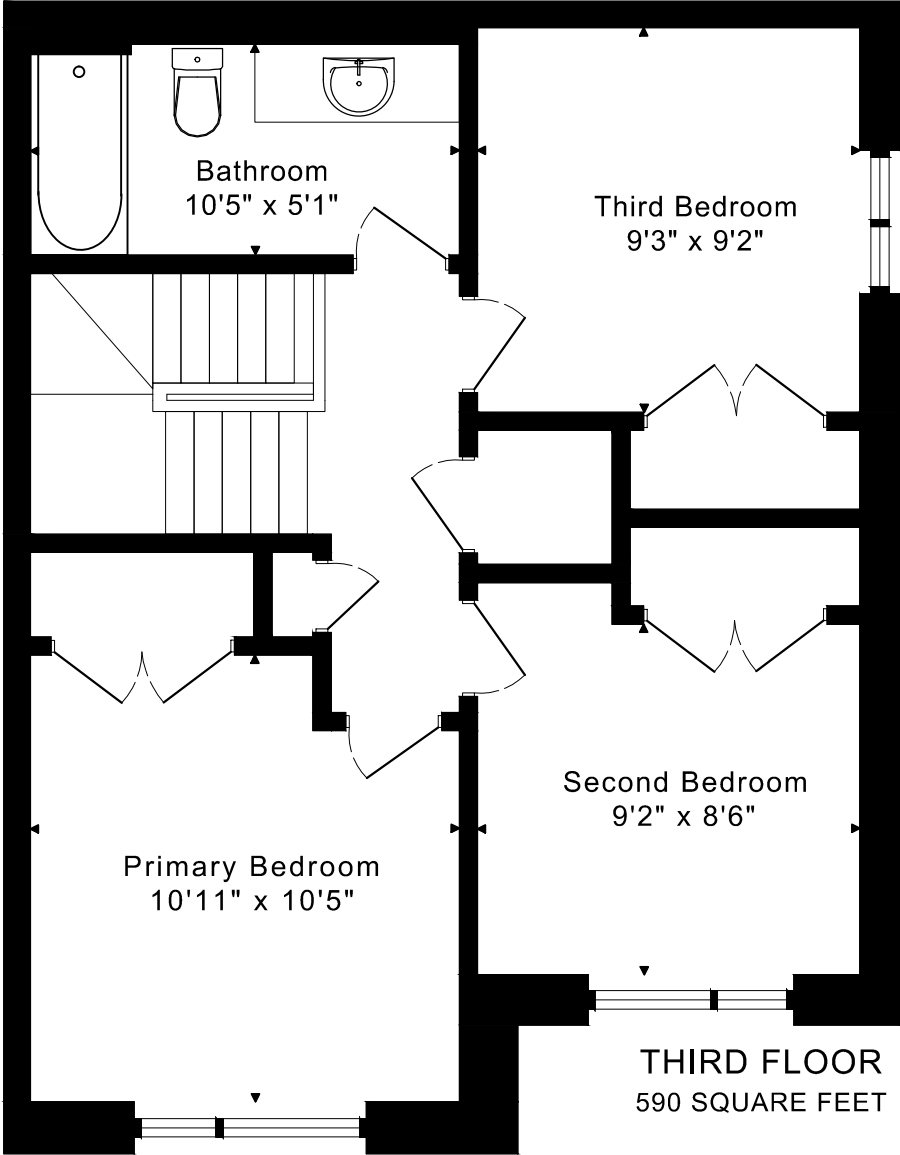
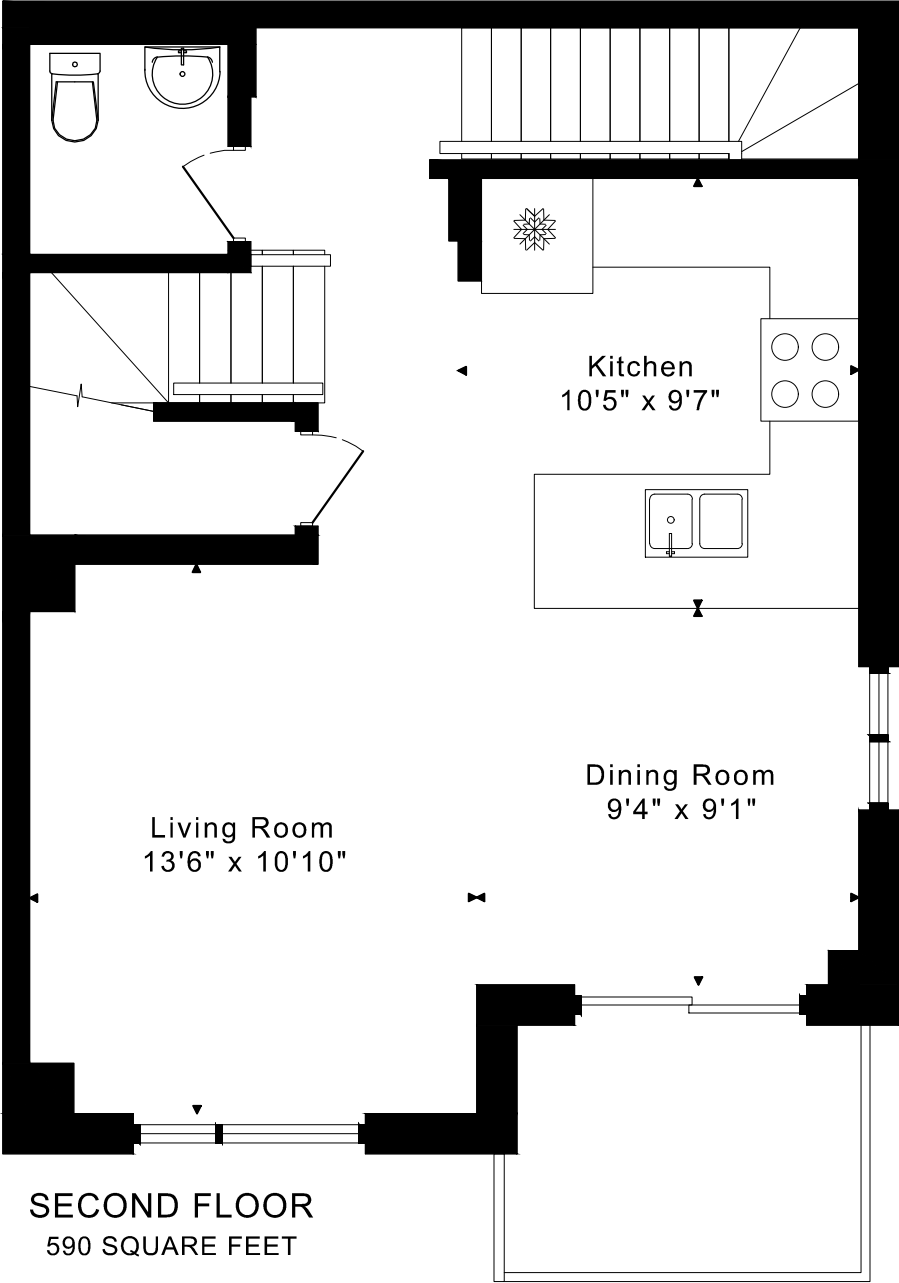
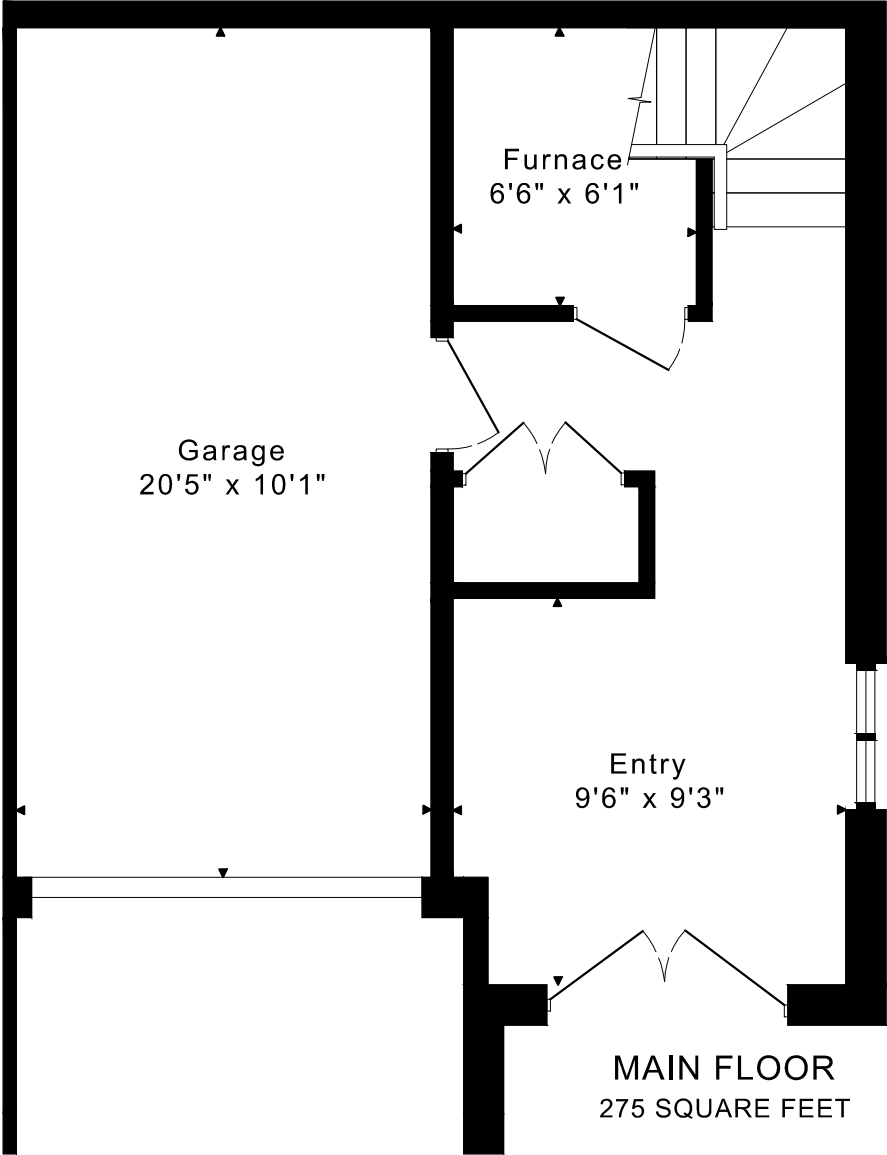
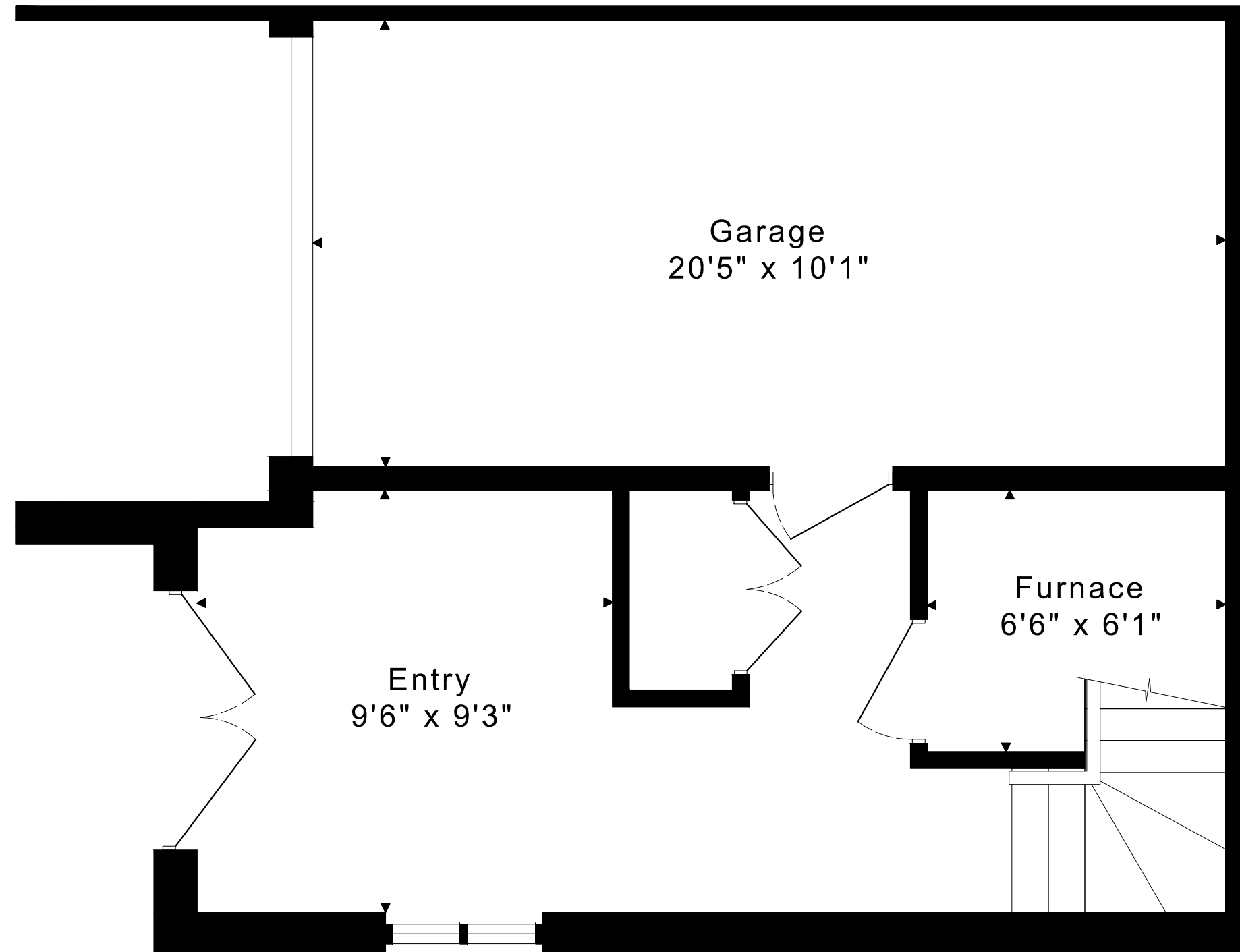


68 DRYDEN LANE
FLOOR PLANS

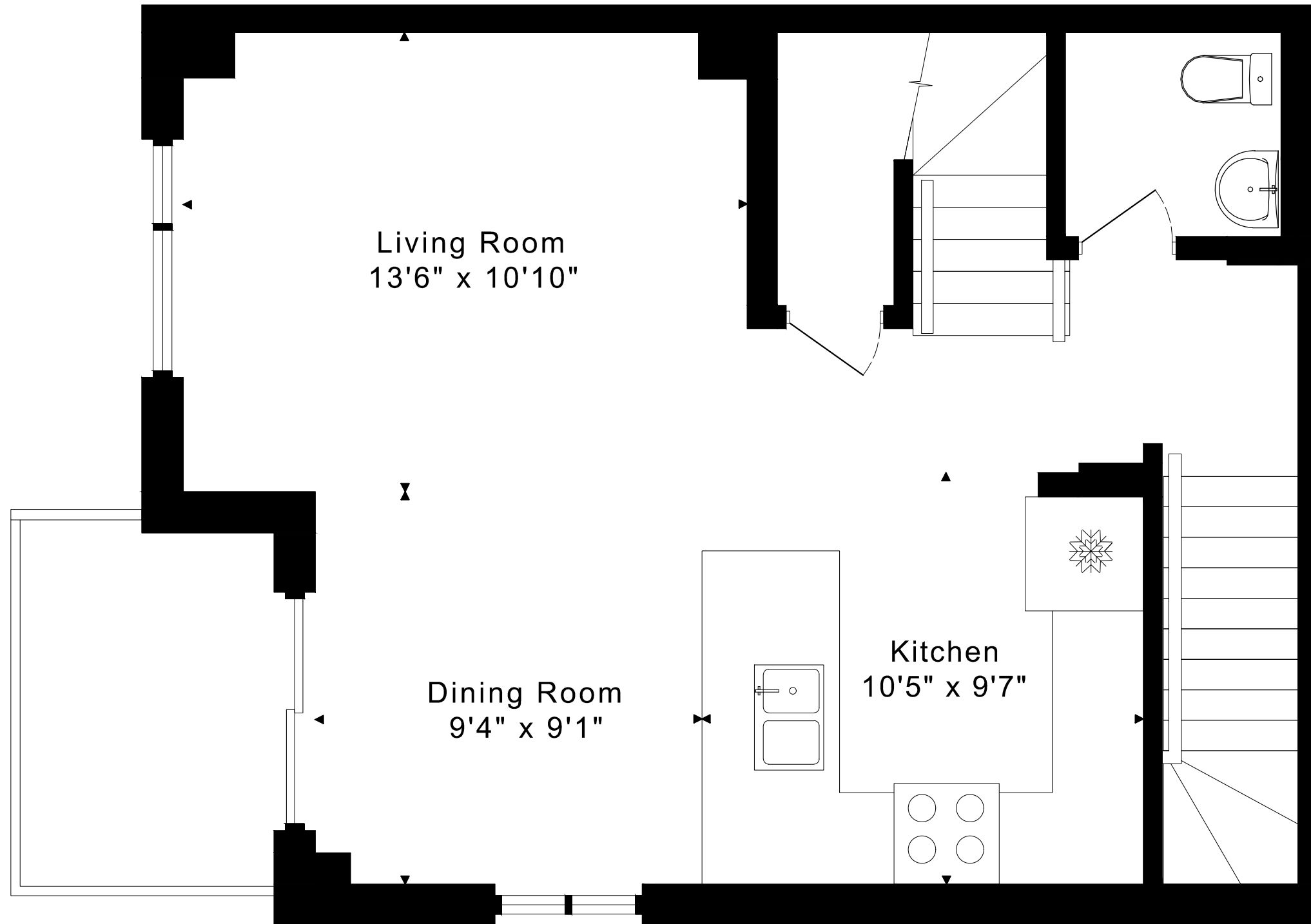


1455 sq ft

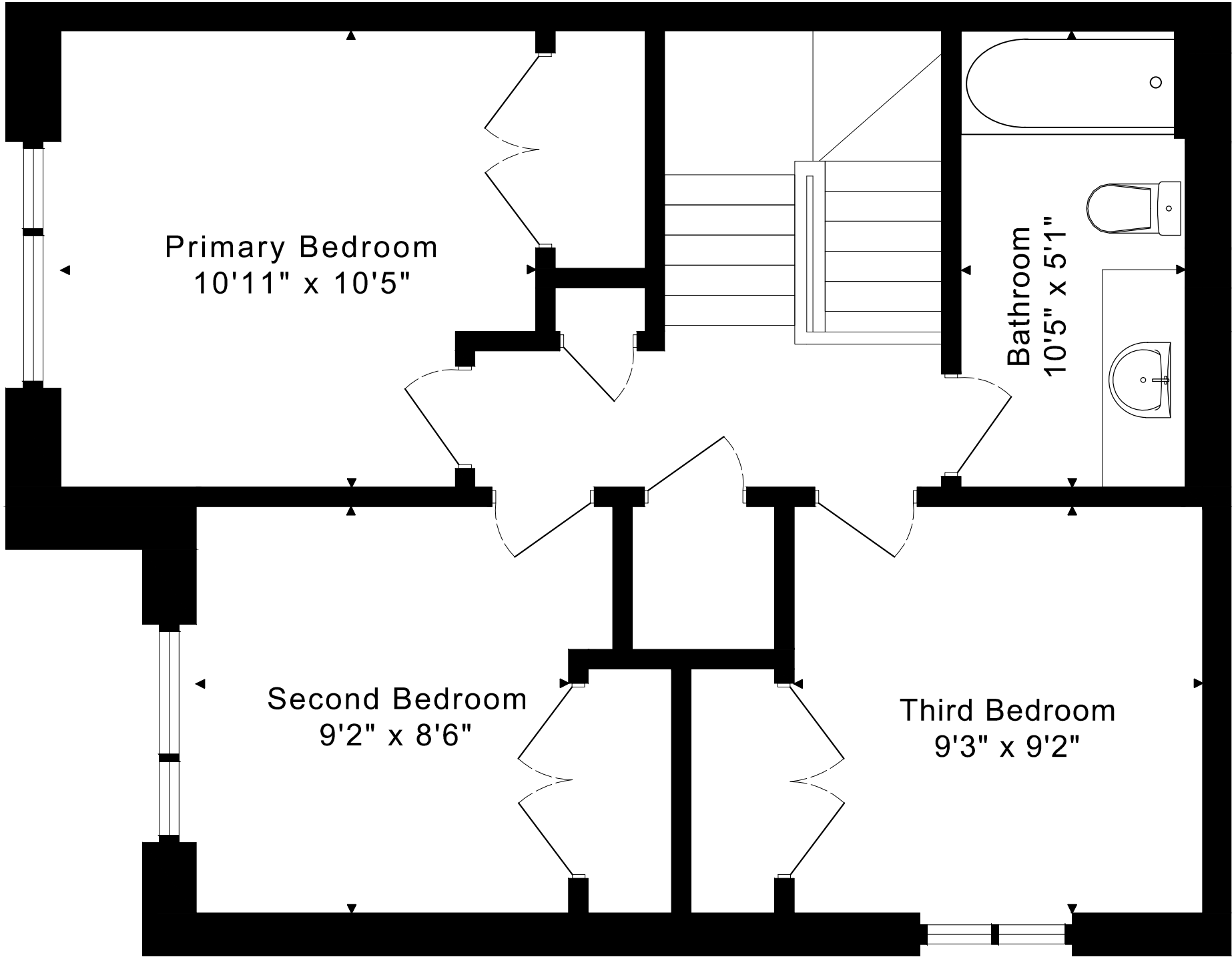
68 DRYDEN LANE
FLOOR PLANS
MAIN FLOOR 275 SQUARE FEET



68 DRYDEN LANE
FLOOR PLANS
SECOND FLOOR 590 SQUARE FEET



68 DRYDEN LANE
FLOOR PLANS
THIRD FLOOR 590 SQUARE FEET



68 DRYDEN LANE ROOM MEASUREMENTS

Floor	Room	Imperial						Metric [m]		
		Length		Width		Height		Length	Width	Height
		Feet	Inches	Feet	Inches	Feet	Inches			
Third	Primary Bedroom	10	11	10	5	8	1	3,33	3,18	2,46
	Second Bedroom	9	2	8	6	8	1	2,79	2,59	2,46
	Third Bedroom	9	3	9	2	8	1	2,82	2,79	2,46
	Bathroom	10	5	5	1	8	1	3,18	1,55	2,46
Second	Living Room	13	6	10	10	8	2	4,11	3,30	2,49
	Dining Room	9	4	9	1	8	2	2,84	2,77	2,49
	Kitchen	10	5	9	7	8	2	3,18	2,92	2,49
Main	Entry	9	6	9	3	9	2	2,90	2,82	2,79
	Furnace	6	6	6	1	9	2	1,98	1,85	2,79
	Garage	20	5	10	1	9	2	6,22	3,07	2,79

CAPTURED ON: 11 JULY 2025
DIMENSIONS ARE APPROXIMATE AND SHOULD BE CONSIDERED
ILLUSTRATIVE ONLY.

The following is a disclaimer regarding the approximate nature of dimensions and floor areas listed in this document:

Disclaimer:

The dimensions and floor areas listed in this document are provided as an estimate only and are intended to be used for illustration purposes only. These measurements are not necessarily meant to be a perfect representation of the actual space.

Notes regarding measurement methods and accuracy:

The utilization of laser measurement technology during the 3D model capturing process at the location provides an accurate representation of floor plans, with a typical margin of error of 3-5%. For the most accurate and official measurement data, it is advised to consult official documents such as MPAC records, builder's pre-construction plans, or data from certified measurement companies.

Exterior wall thickness is included in the calculation of the overall square footage and is considered as a component of the footprint. The wall thickness measurement is obtained onsite whenever possible, or estimated in the event where obtaining onsite measurements is not possible, such as in the case of condominium buildings where wall thickness may vary throughout the building.