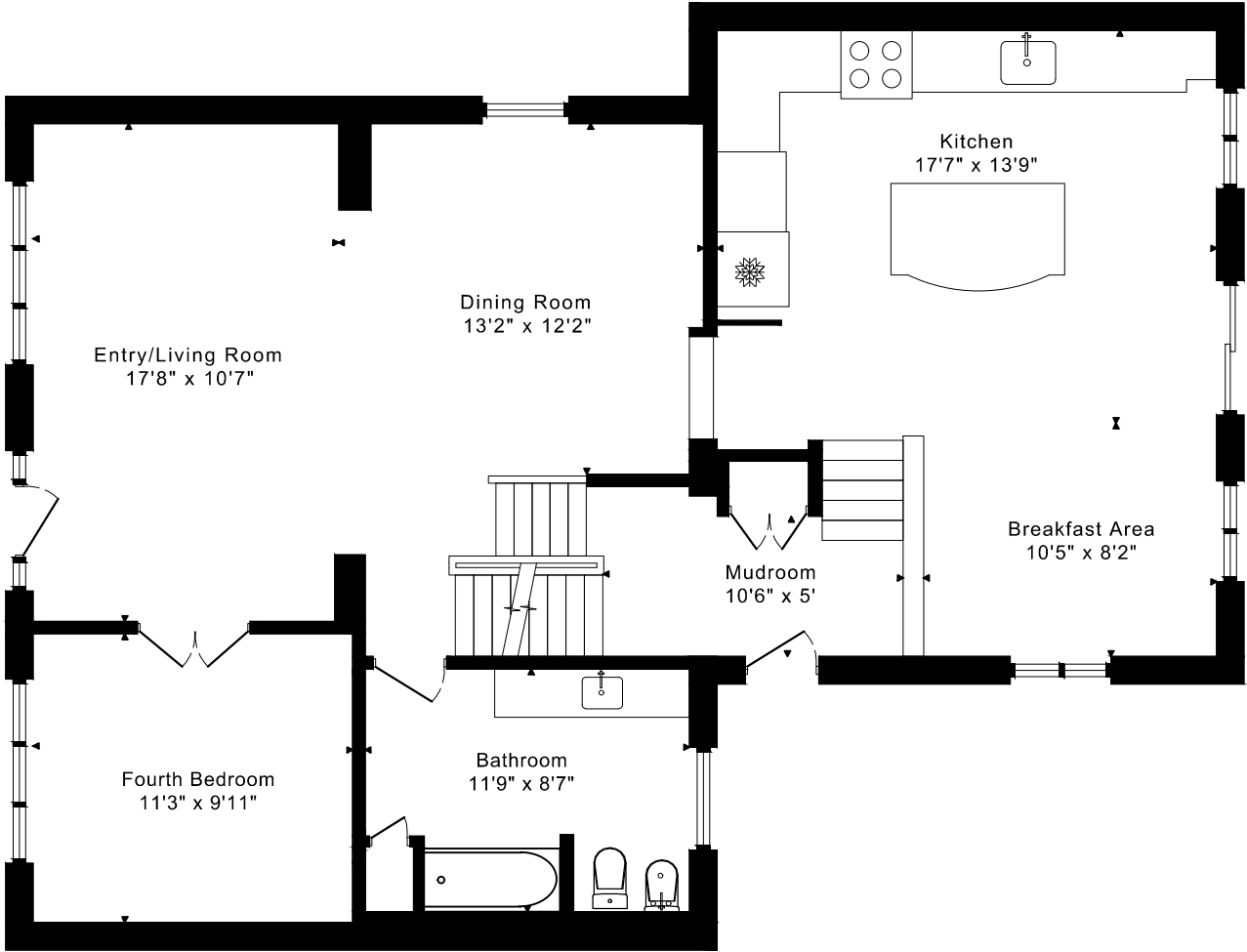
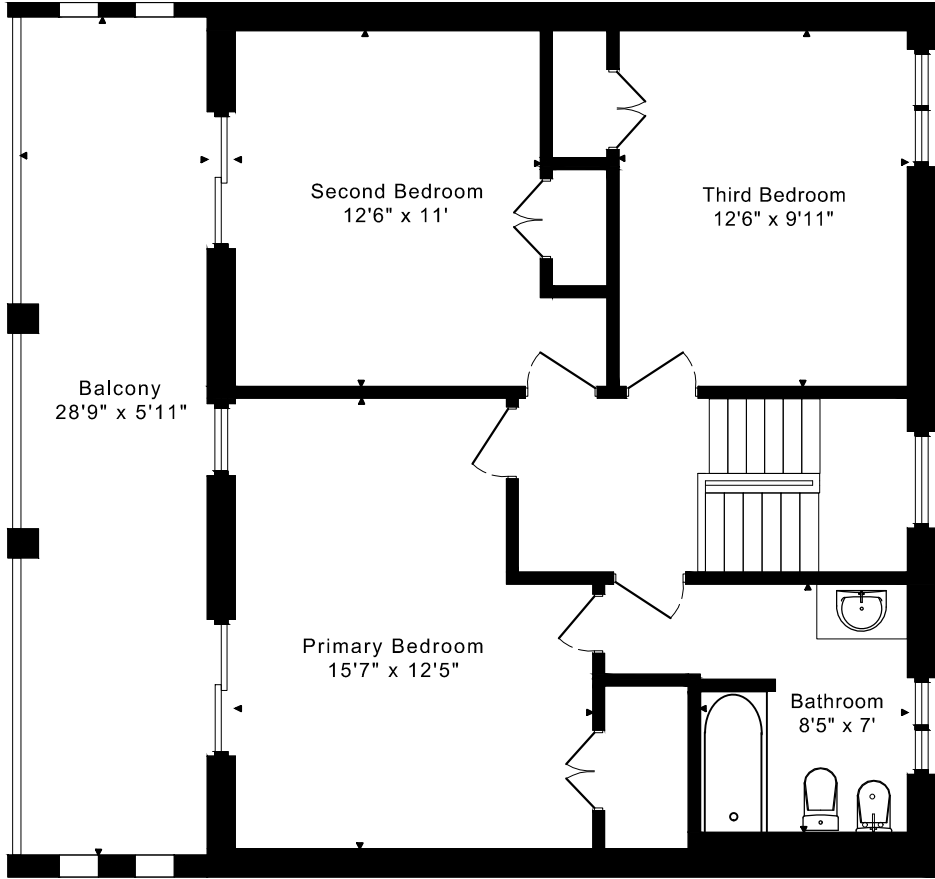


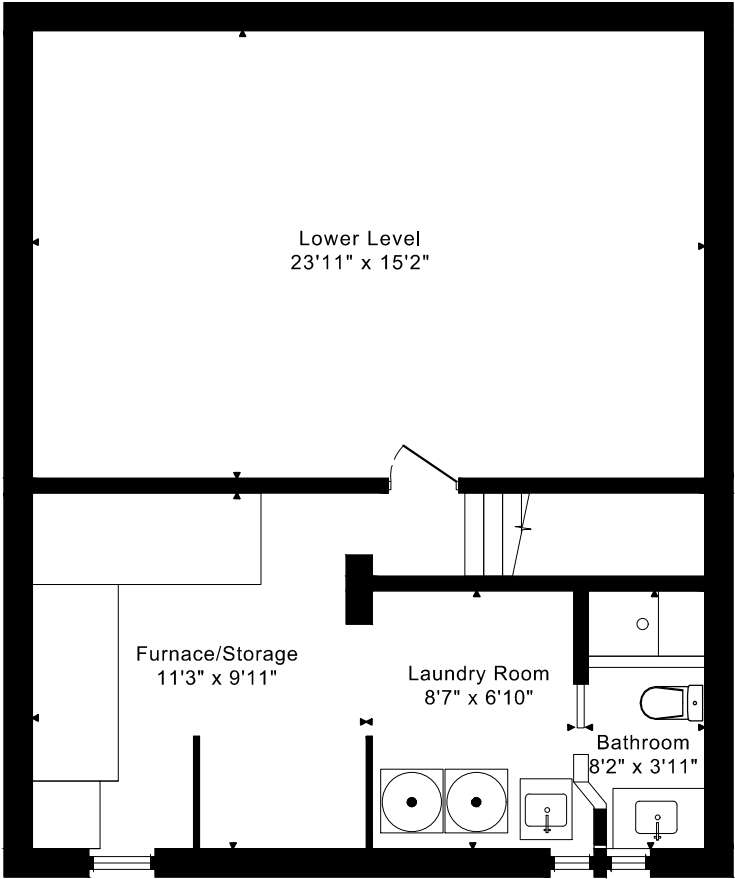
15 BENALTO ROAD  
FLOOR PLANS



MAIN FLOOR  
1220 SQUARE FEET



SECOND FLOOR  
765 SQUARE FEET

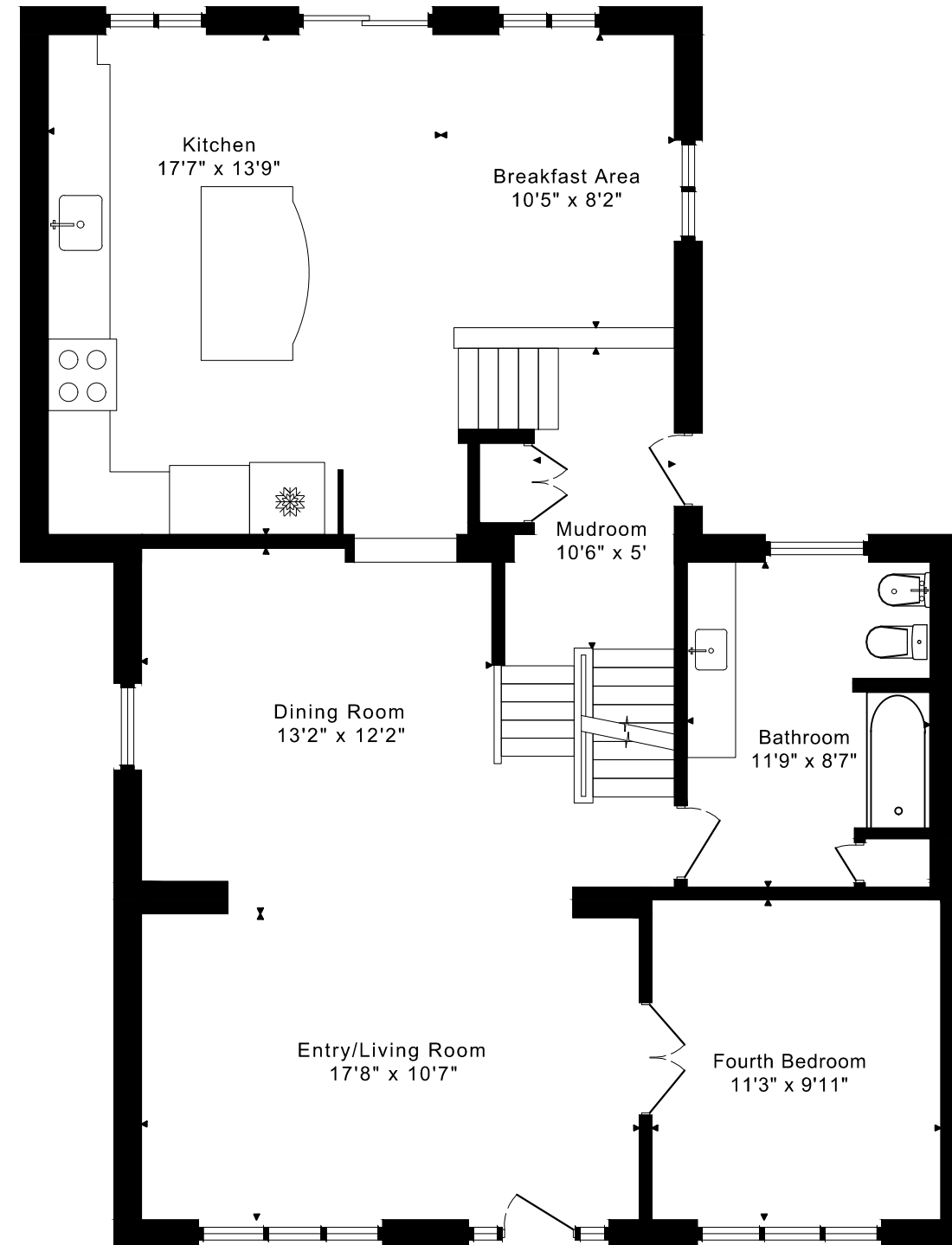


LOWER FLOOR  
765 SQUARE FEET

# 15 BENALTO ROAD

## FLOOR PLANS

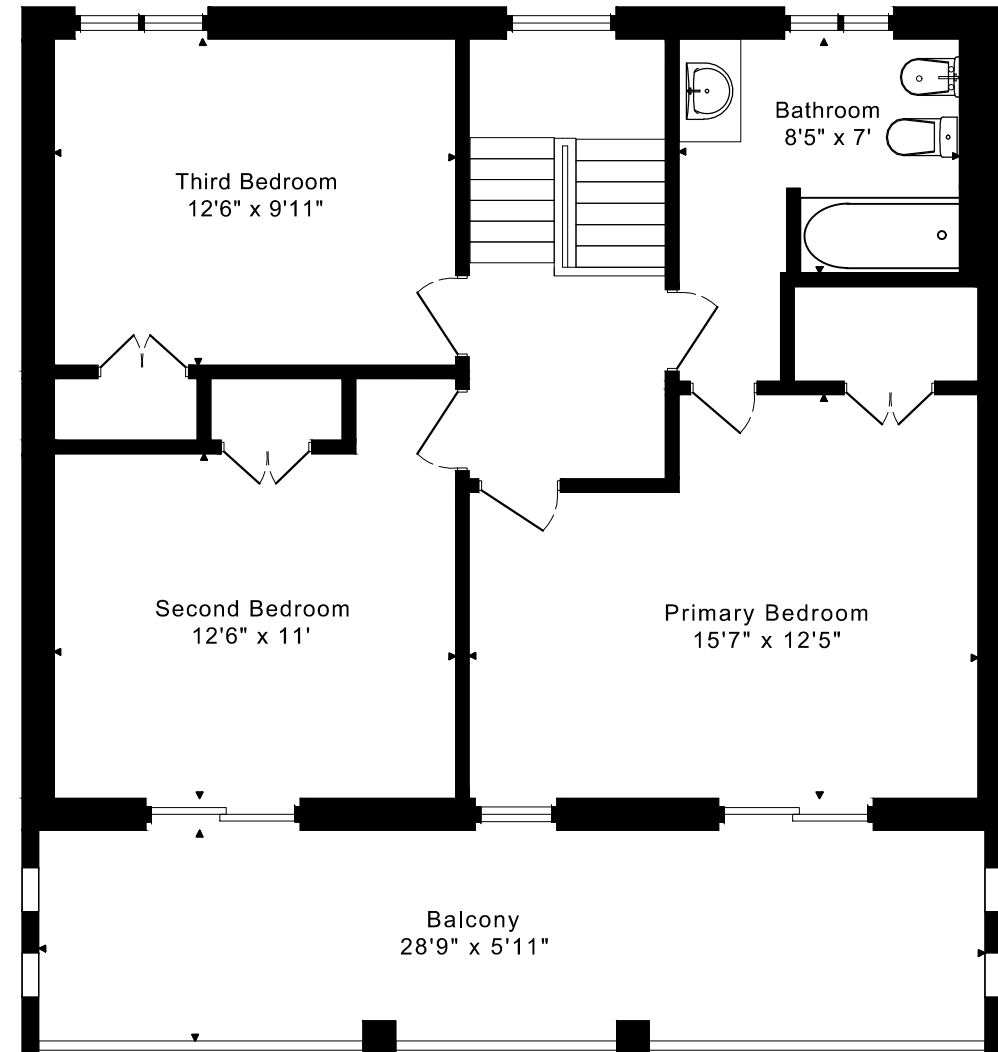
MAIN FLOOR 1220 SQUARE FEET



# 15 BENALTO ROAD

## FLOOR PLANS

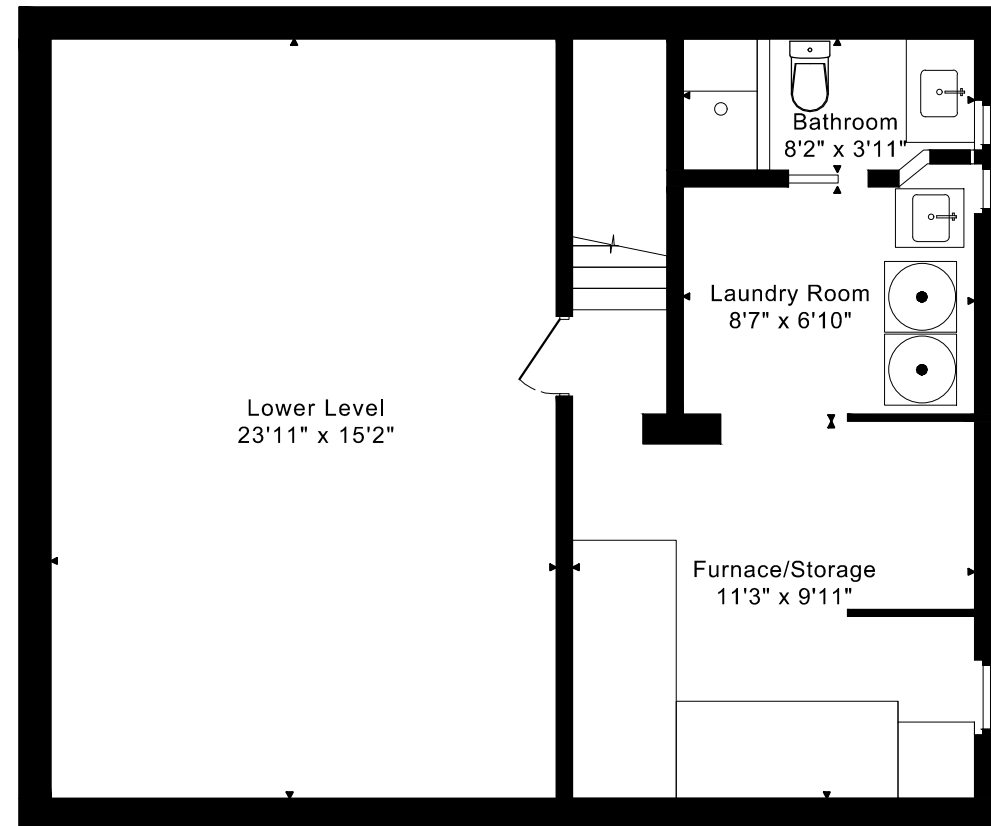
SECOND FLOOR 765 SQUARE FEET



# 15 BENALTO ROAD

## FLOOR PLANS

LOWER FLOOR 765 SQUARE FEET



15 BENALTO ROAD ROOM MEASUREMENTS

Floor	Room	Imperial						Metric [m]		
		Length		Width		Height		Length	Width	Height
		Feet	Inches	Feet	Inches	Feet	Inches			
Second	Primary Bedroom	15	7	12	5	8	1	4,75	3,78	2,46
	Second Bedroom	12	6	11	0	8	1	3,81	3,35	2,46
	Third Bedroom	12	6	9	11	8	1	3,81	3,02	2,46
	Bathroom	8	5	7	0	8	1	2,57	2,13	2,46
	Balcony	28	9	5	11	8	1	8,76	1,80	2,46
Main	Entry/Living Room	17	8	10	7	8	2	5,38	3,23	2,49
	Dining Room	13	2	12	2	8	2	4,01	3,71	2,49
	Kitchen	17	7	13	9	8	0	5,36	4,19	2,44
	Breakfast Area	10	5	8	2	8	0	3,18	2,49	2,44
	Fourth Bedroom	11	3	9	11	8	2	3,43	3,02	2,49
	Bathroom	11	9	8	7	8	2	3,58	2,62	2,49
	Mudroom	10	6	5	0	11	11	3,20	1,52	3,63
Lower	Lower Level	23	11	15	2	6	9	7,29	4,62	2,06
	Furnace/Storage	11	3	9	11	6	9	3,43	3,02	2,06
	Laundry Room	8	7	6	10	6	9	2,62	2,08	2,06
	Bathroom	8	2	3	11	6	9	2,49	1,19	2,06

The following is a disclaimer regarding the approximate nature of dimensions and floor areas listed in this document:

---

**Disclaimer:**

The dimensions and floor areas listed in this document are provided as an estimate only and are intended to be used for illustration purposes only. These measurements are not necessarily meant to be a perfect representation of the actual space.

**Notes regarding measurement methods and accuracy:**

The utilization of laser measurement technology during the 3D model capturing process at the location provides an accurate representation of floor plans, with a typical margin of error of 3-5%. For the most accurate and official measurement data, it is advised to consult official documents such as MPAC records, builder's pre-construction plans, or data from certified measurement companies.

Exterior wall thickness is included in the calculation of the overall square footage and is considered as a component of the footprint. The wall thickness measurement is obtained onsite whenever possible, or estimated in the event where obtaining onsite measurements is not possible, such as in the case of condominium buildings where wall thickness may vary throughout the building.