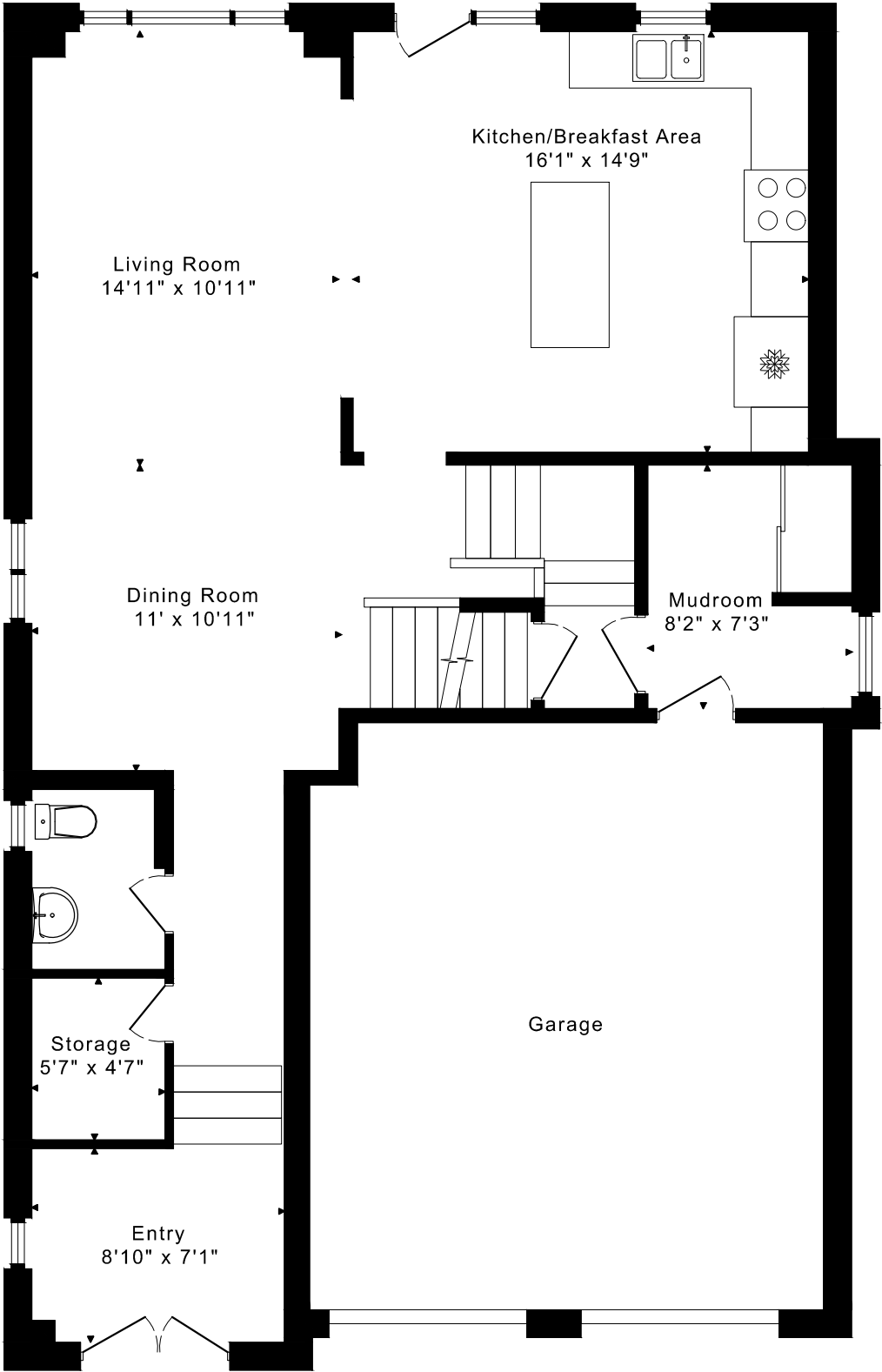
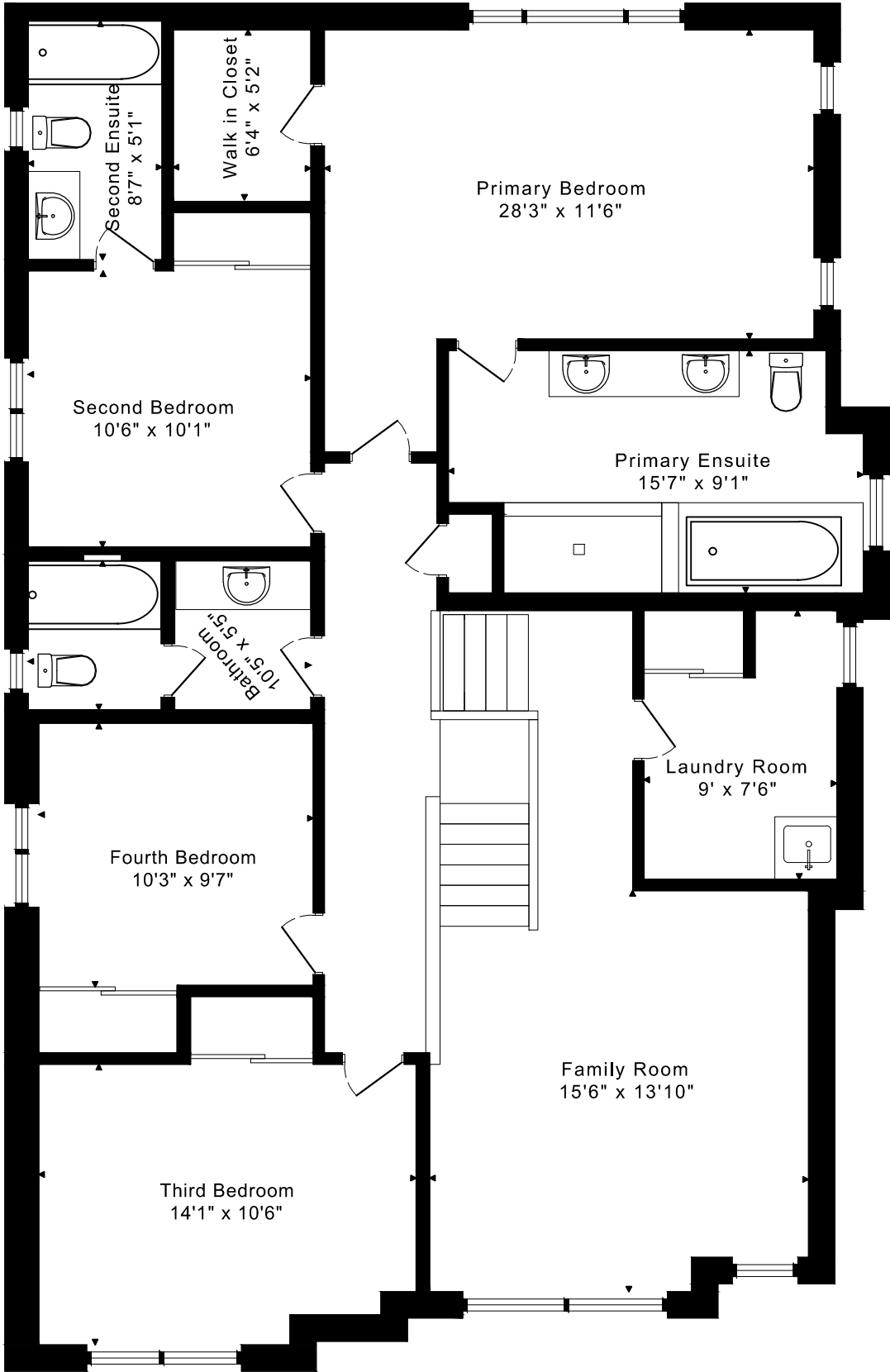


39 YALE DRIVE
FLOOR PLANS



MAIN FLOOR
1015 SQUARE FEET

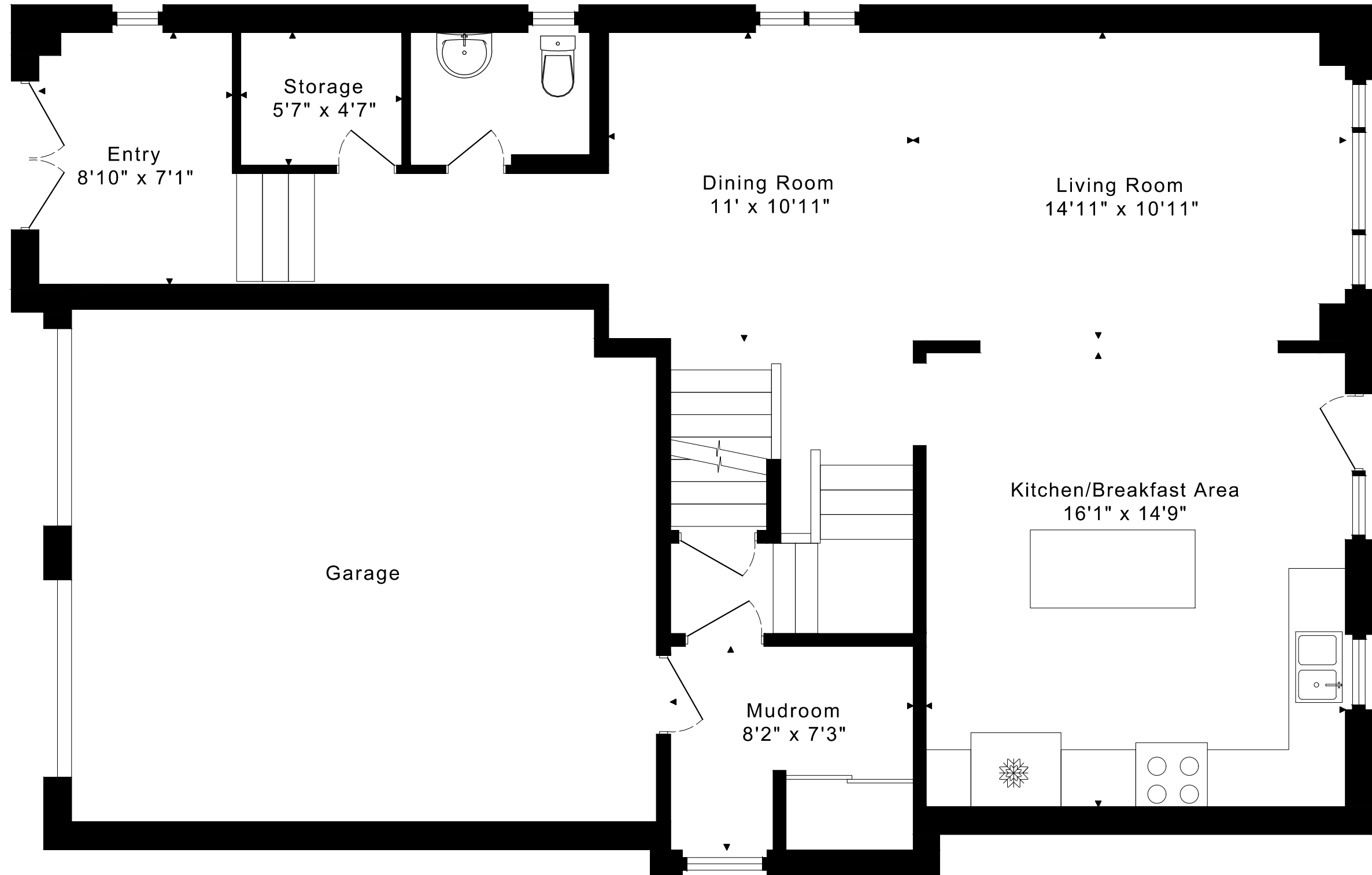


SECOND FLOOR
1555 SQUARE FEET

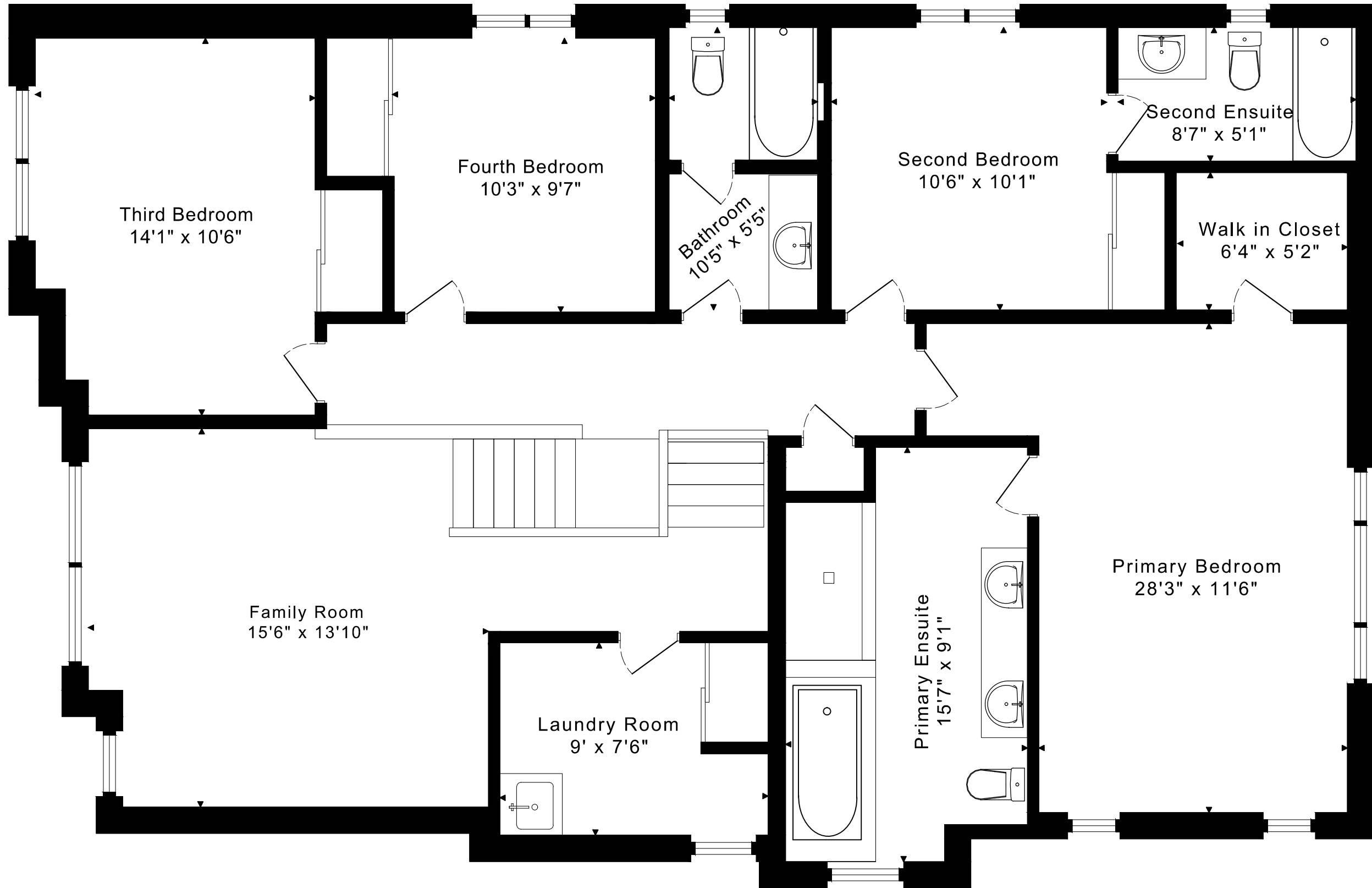
2570 sq ft

39 YALE DRIVE FLOOR PLANS

MAIN FLOOR 1015 SQUARE FEET



39 YALE DRIVE
FLOOR PLANS
SECOND FLOOR 1555 SQUARE FEET



39 YALE DRIVE ROOM MEASUREMENTS

Floor	Room	Imperial						Metric [m]		
		Length		Width		Height		Length	Width	Height
		Feet	Inches	Feet	Inches	Feet	Inches			
Second	Family Room	15	6	13	10	13	0	4,72	4,22	3,96
	Primary Bedroom	18	3	11	6	8	1	5,56	3,51	2,46
	Primary Ensuite	15	7	9	1	8	1	4,75	2,77	2,46
	Walk in Closet	6	4	5	2	8	1	1,93	1,57	2,46
	Second Bedroom	10	6	10	1	8	1	3,20	3,07	2,46
	Second Ensuite	8	7	5	1	8	1	2,62	1,55	2,46
	Third Bedroom	14	1	10	6	8	1	4,29	3,20	2,46
	Fourth Bedroom	10	3	9	7	8	1	3,12	2,92	2,46
	Bathroom	10	5	5	5	8	1	3,18	1,65	2,46
	Laundry Room	9	0	7	6	8	1	2,74	2,29	2,46
Main	Entry	8	10	7	1	11	3	2,69	2,16	3,43
	Living Room	14	11	10	11	8	9	4,55	3,33	2,67
	Dining Room	11	0	10	11	8	9	3,35	3,33	2,67
	Kitchen/Breakfast Area	16	1	14	9	8	9	4,90	4,50	2,67
	Mudroom	8	2	7	3	7	9	2,49	2,21	2,36
	Storage	5	7	4	7	8	9	1,70	1,40	2,67

CAPTURED ON: 17 JULY 2025
 DIMENSIONS ARE APPROXIMATE AND SHOULD BE CONSIDERED
 ILLUSTRATIVE ONLY.

The following is a disclaimer regarding the approximate nature of dimensions and floor areas listed in this document:

Disclaimer:

The dimensions and floor areas listed in this document are provided as an estimate only and are intended to be used for illustration purposes only. These measurements are not necessarily meant to be a perfect representation of the actual space.

Notes regarding measurement methods and accuracy:

The utilization of laser measurement technology during the 3D model capturing process at the location provides an accurate representation of floor plans, with a typical margin of error of 3-5%. For the most accurate and official measurement data, it is advised to consult official documents such as MPAC records, builder's pre-construction plans, or data from certified measurement companies.

Exterior wall thickness is included in the calculation of the overall square footage and is considered as a component of the footprint. The wall thickness measurement is obtained onsite whenever possible, or estimated in the event where obtaining onsite measurements is not possible, such as in the case of condominium buildings where wall thickness may vary throughout the building.