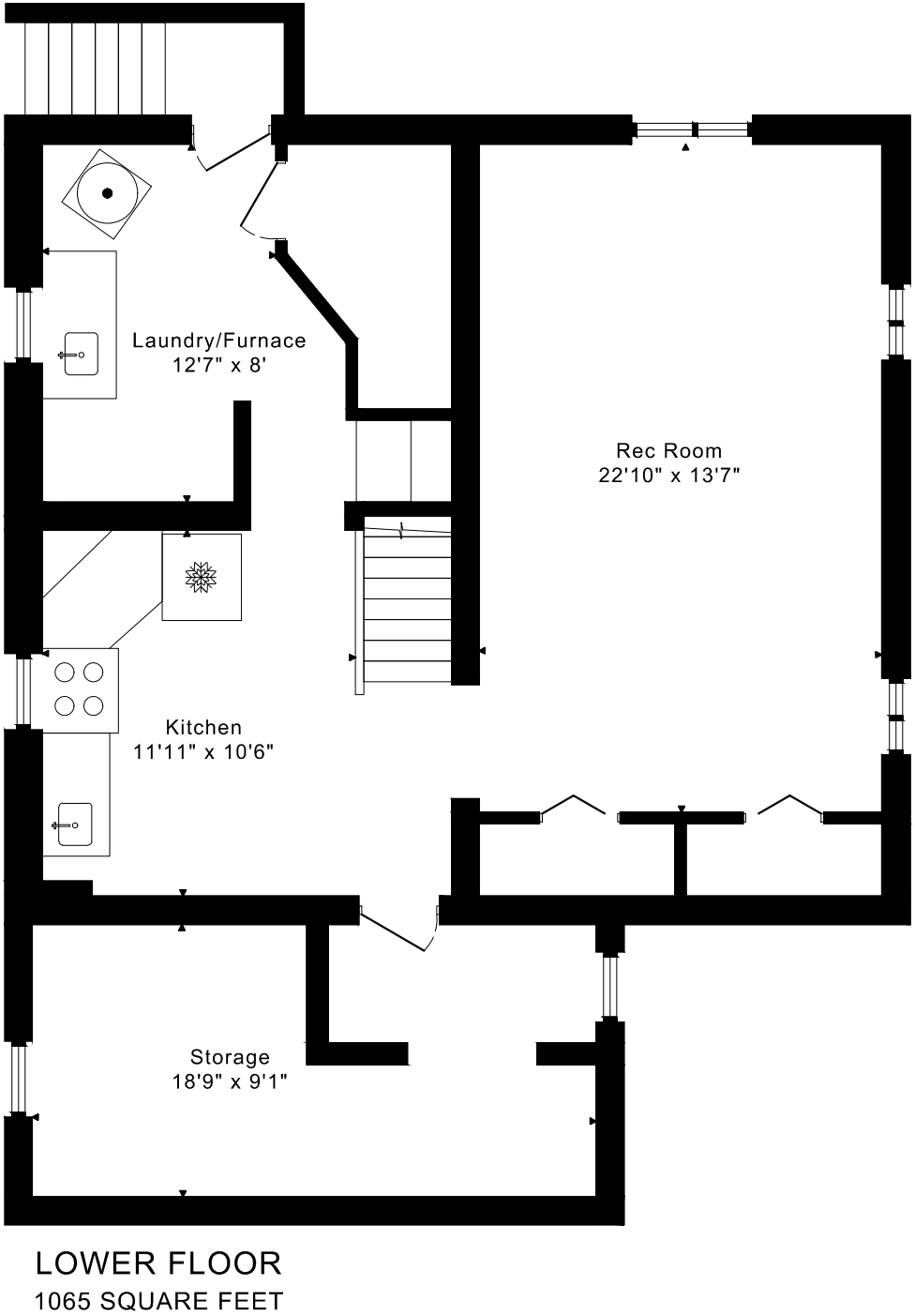
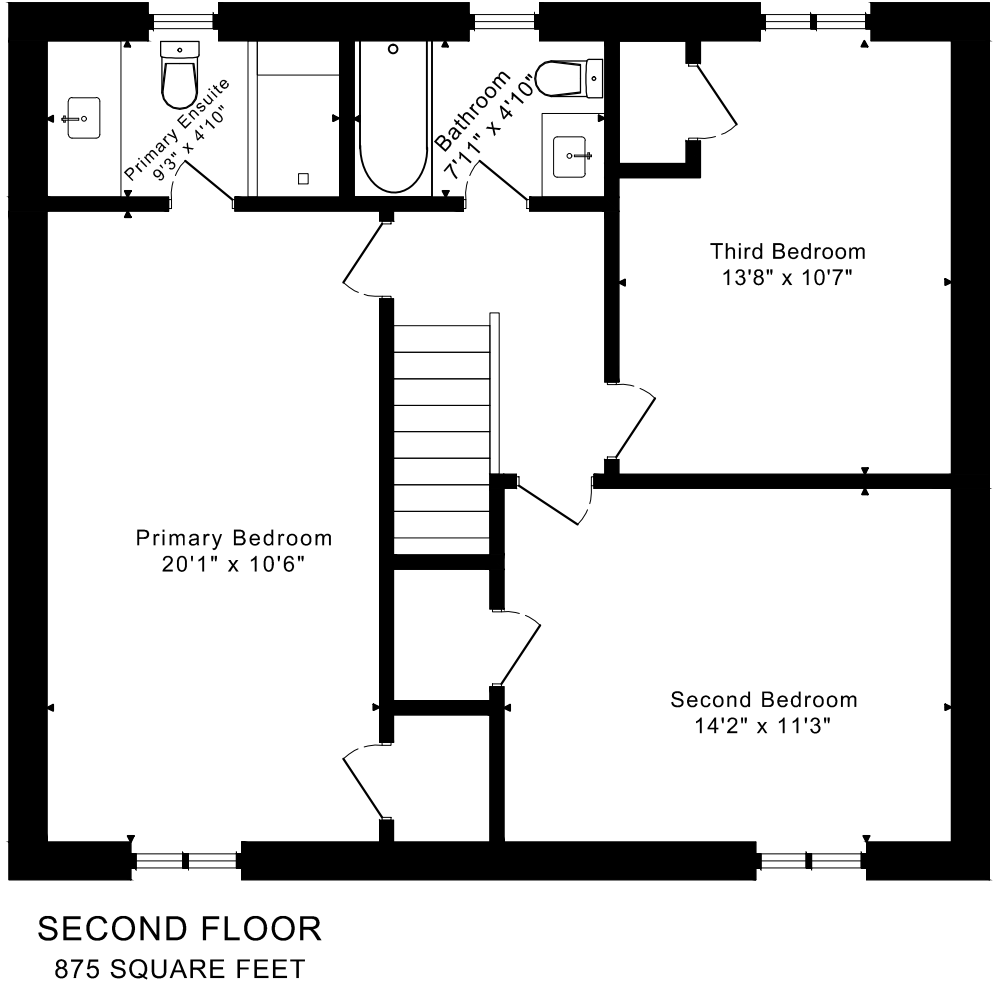
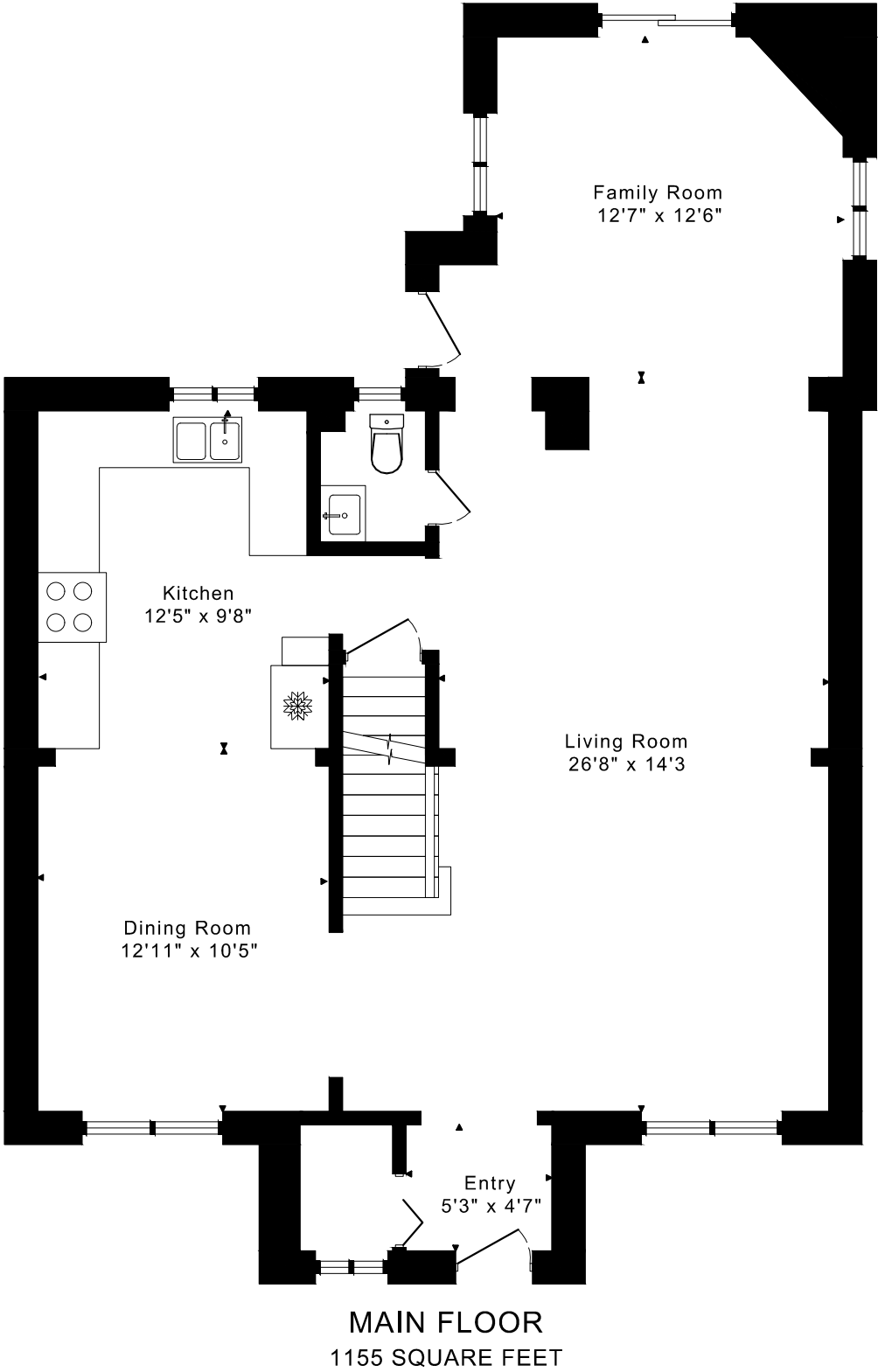


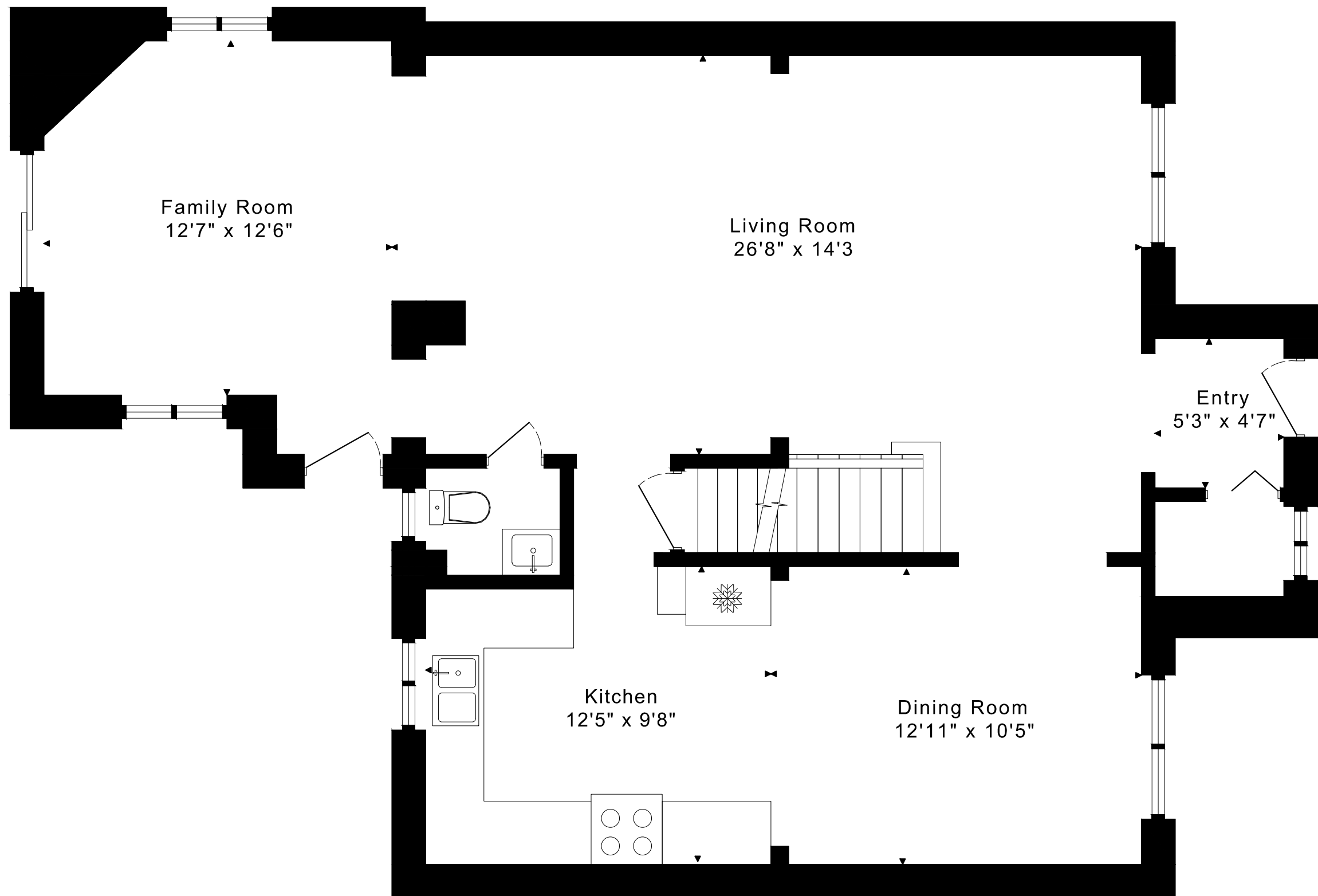
71 HAWMAN AVENUE
FLOOR PLANS



71 HAWMAN AVENUE

FLOOR PLANS

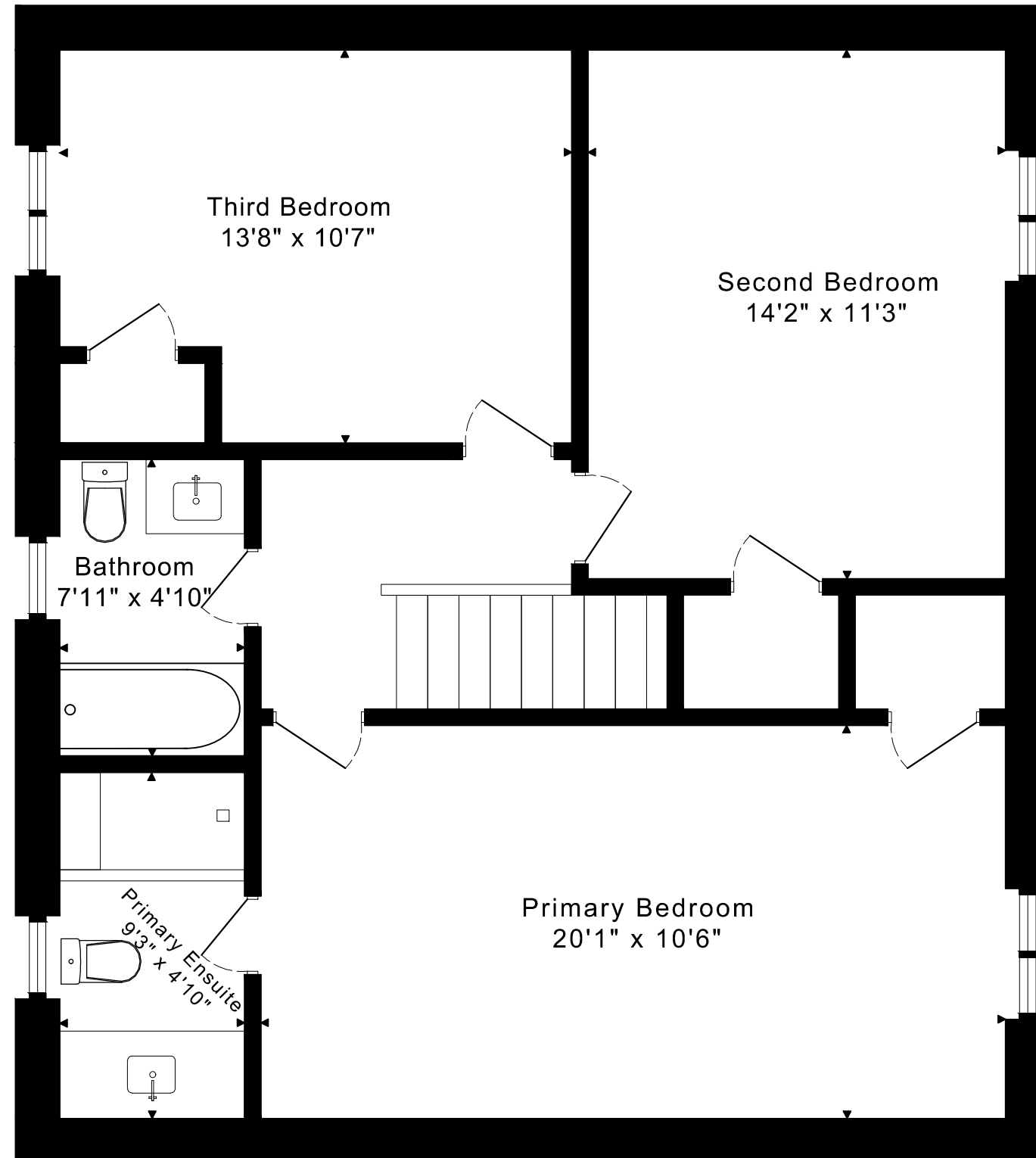
MAIN FLOOR 1155 SQUARE FEET



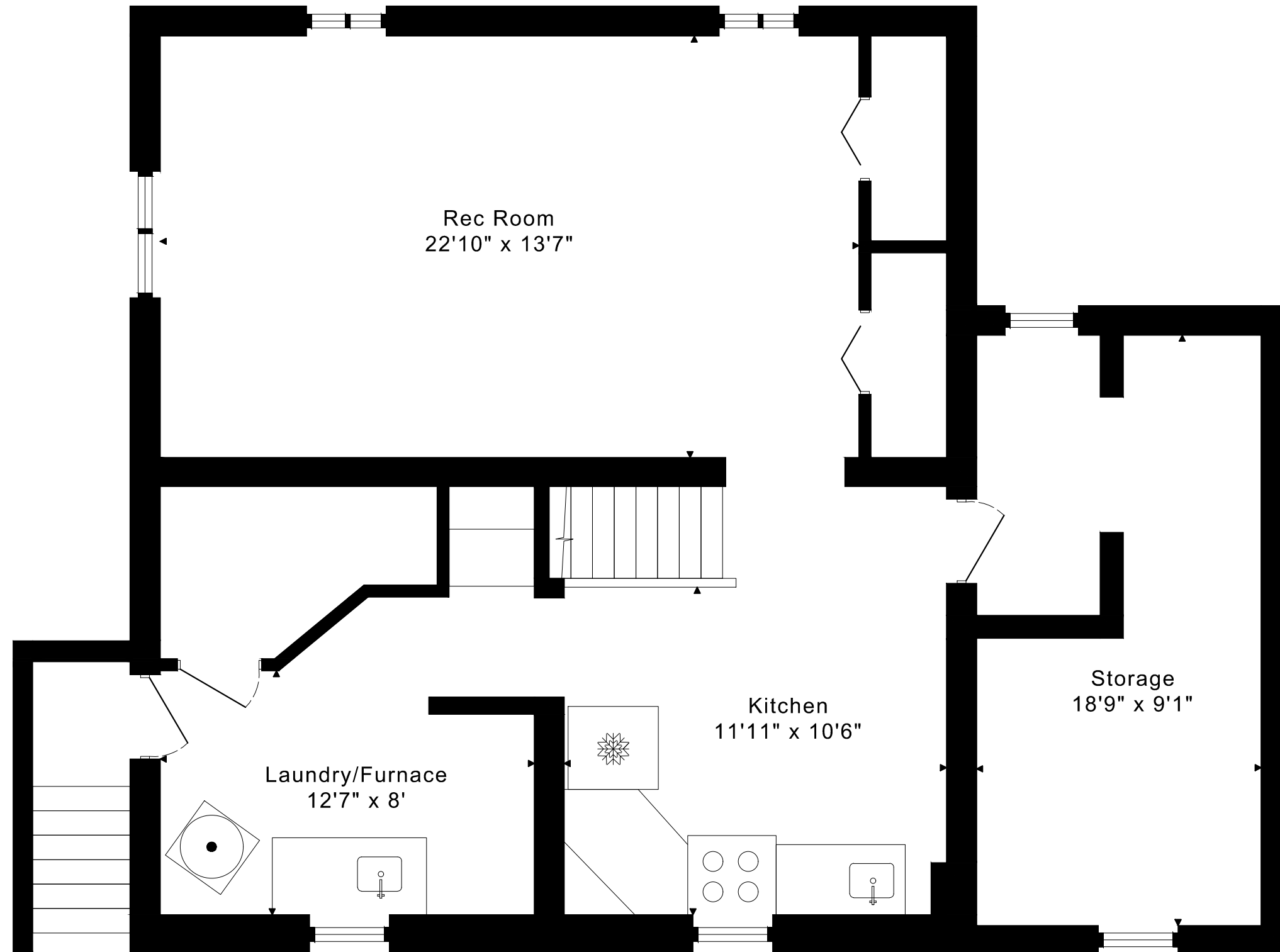
71 HAWMAN AVENUE

FLOOR PLANS

SECOND FLOOR 875 SQUARE FEET



71 HAWMAN AVENUE
FLOOR PLANS
LOWER FLOOR 1065 SQUARE FEET



71 HAWMAN AVENUE ROOM MEASUREMENTS

Floor	Room	Imperial						Metric [m]		
		Length		Width		Height		Length	Width	Height
		Feet	Inches	Feet	Inches	Feet	Inches			
Second	Primary Bedroom	20	1	10	6	8	0	6,12	3,20	2,44
	Primary Ensuite	9	3	4	10	8	0	2,82	1,47	2,44
	Second Bedroom	14	2	11	3	8	0	4,32	3,43	2,44
	Third Bedroom	13	8	10	7	8	0	4,17	3,23	2,44
	Bathroom	7	11	4	10	8	0	2,41	1,47	2,44
Main	Entry	5	3	4	7	7	10	1,60	1,40	2,39
	Living Room	26	8	14	3	7	10	8,13	4,34	2,39
	Dining Room	12	11	10	5	7	10	3,94	3,18	2,39
	Kitchen	12	5	9	8	7	10	3,78	2,95	2,39
	Family Room	12	7	12	6	9	10	3,84	3,81	3,00
Lower	Rec Room	22	10	13	7	6	10	6,96	4,14	2,08
	Kitchen	11	11	10	6	6	10	3,63	3,20	2,08
	Laundry/Furnace	12	7	8	0	6	1	3,84	2,44	1,85
	Storage	18	9	9	1	6	10	5,72	2,77	2,08

The following is a disclaimer regarding the approximate nature of dimensions and floor areas listed in this document:

Disclaimer:

The dimensions and floor areas listed in this document are provided as an estimate only and are intended to be used for illustration purposes only. These measurements are not necessarily meant to be a perfect representation of the actual space.

Notes regarding measurement methods and accuracy:

The utilization of laser measurement technology during the 3D model capturing process at the location provides an accurate representation of floor plans, with a typical margin of error of 3-5%. For the most accurate and official measurement data, it is advised to consult official documents such as MPAC records, builder's pre-construction plans, or data from certified measurement companies.

Exterior wall thickness is included in the calculation of the overall square footage and is considered as a component of the footprint. The wall thickness measurement is obtained onsite whenever possible, or estimated in the event where obtaining onsite measurements is not possible, such as in the case of condominium buildings where wall thickness may vary throughout the building.