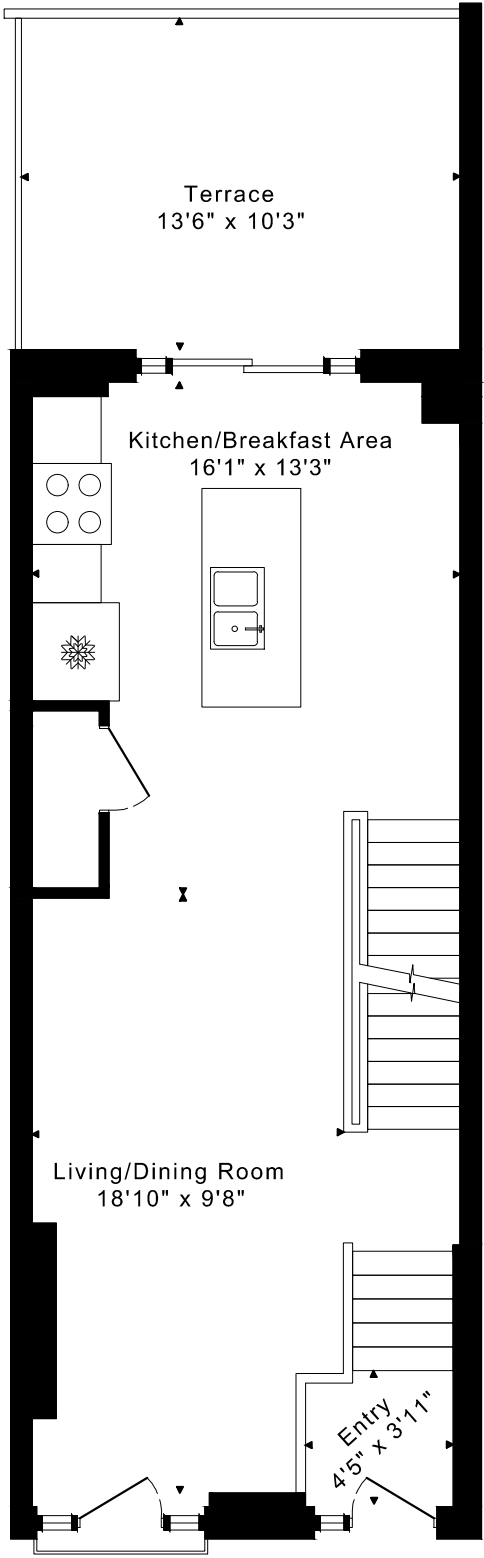
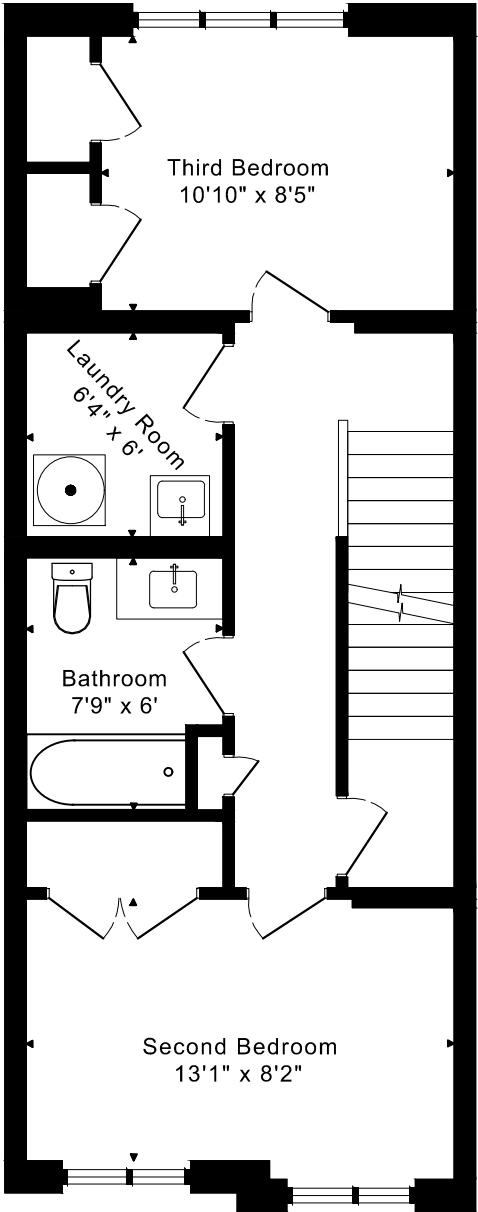


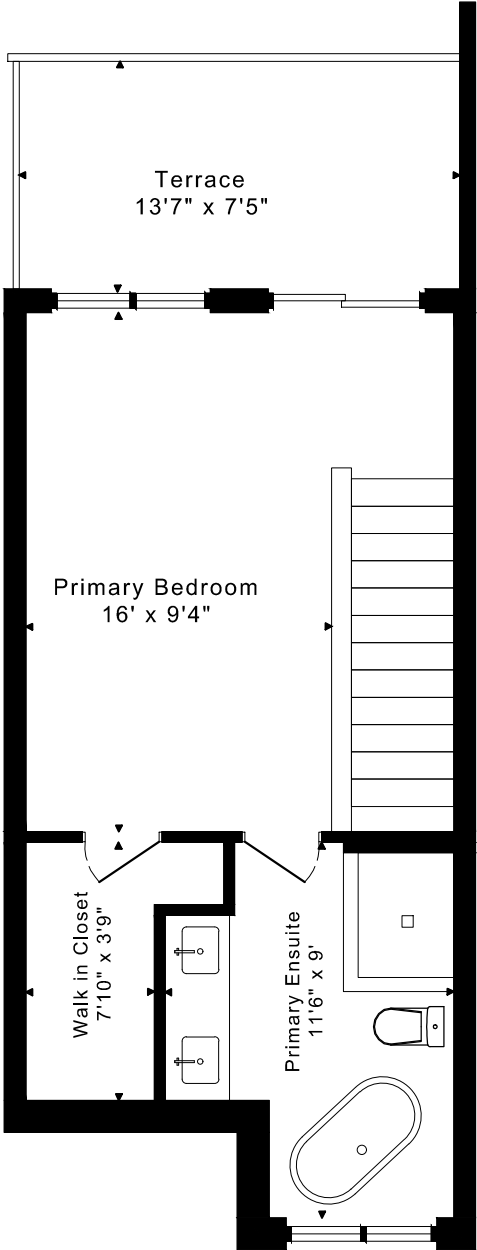
67 EDWARD HORTON CRESCENT
FLOOR PLANS



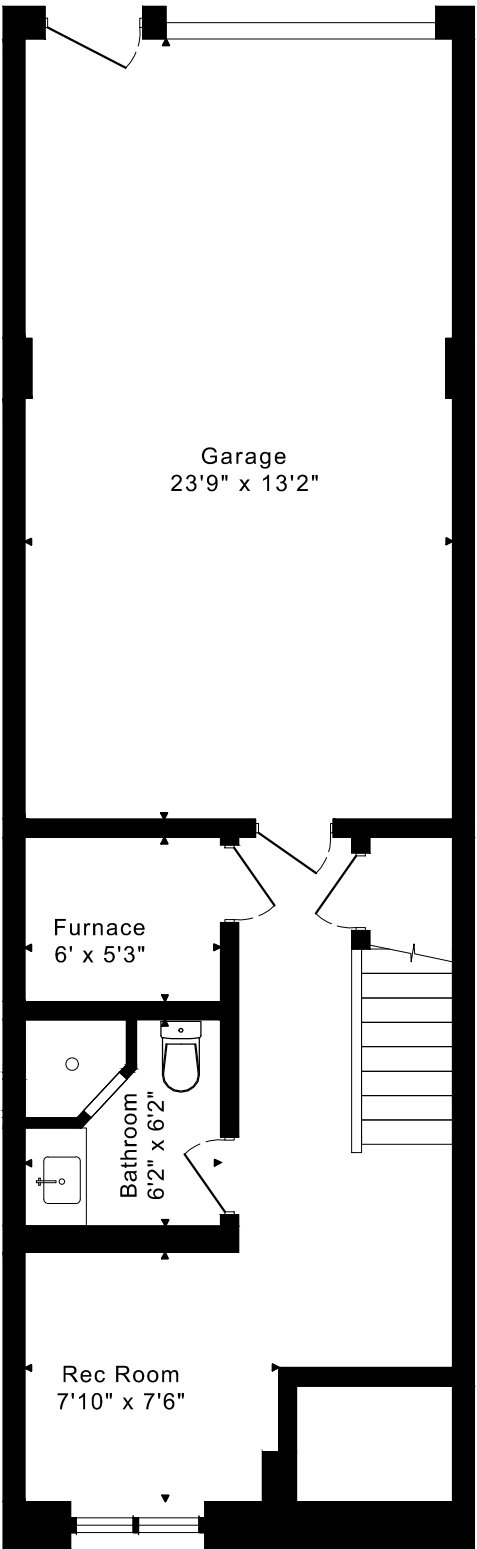
MAIN FLOOR
525 SQUARE FEET



SECOND FLOOR
530 SQUARE FEET



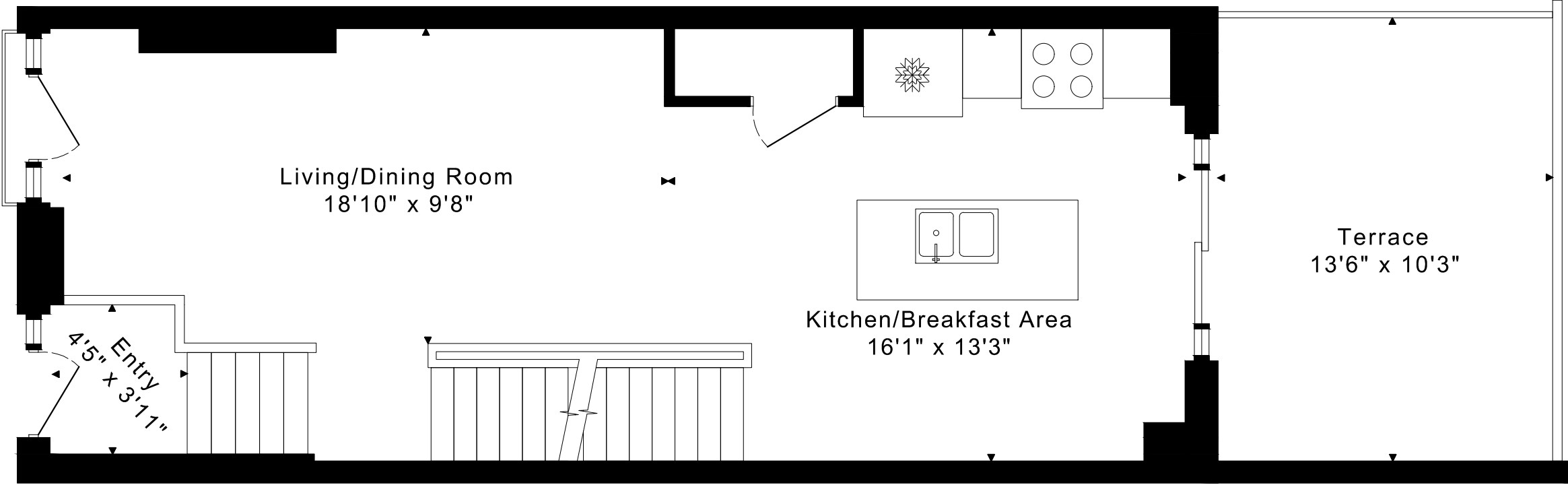
THIRD FLOOR
400 SQUARE FEET



LOWER FLOOR
320 SQUARE FEET

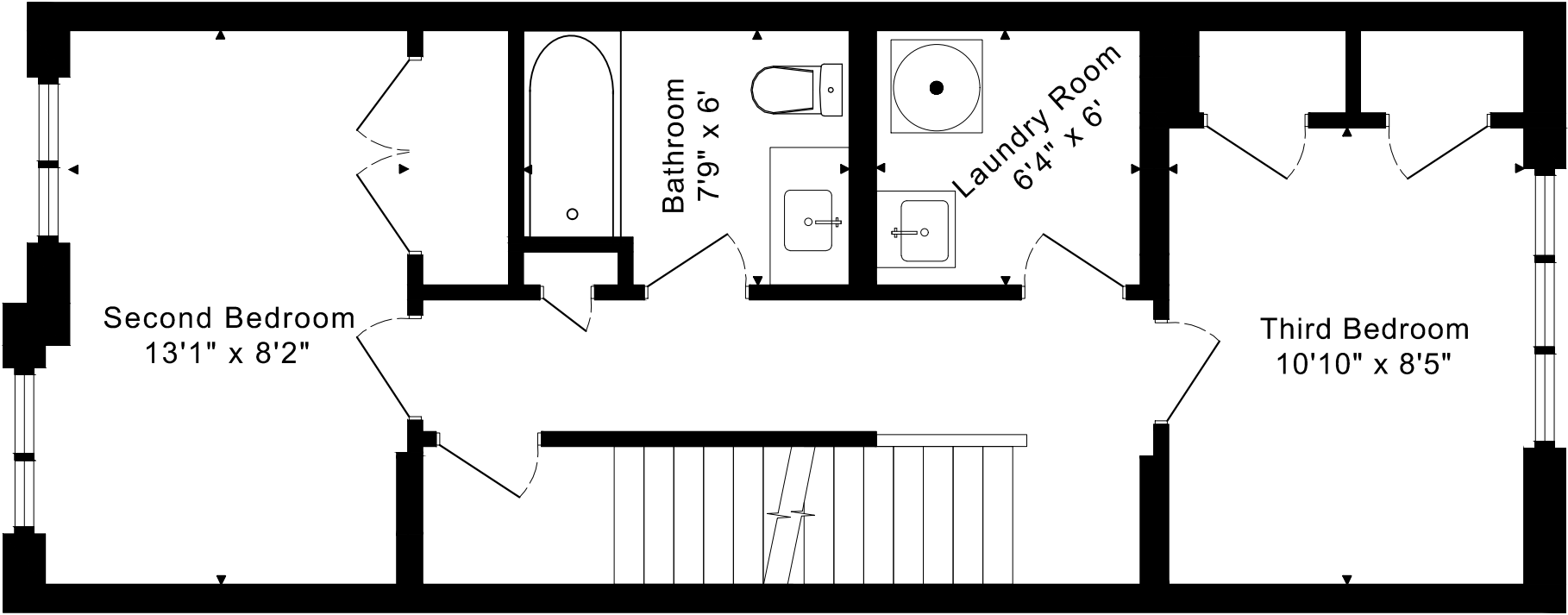
67 EDWARD HORTON CRESCENT
FLOOR PLANS

MAIN FLOOR 525 SQUARE FEET



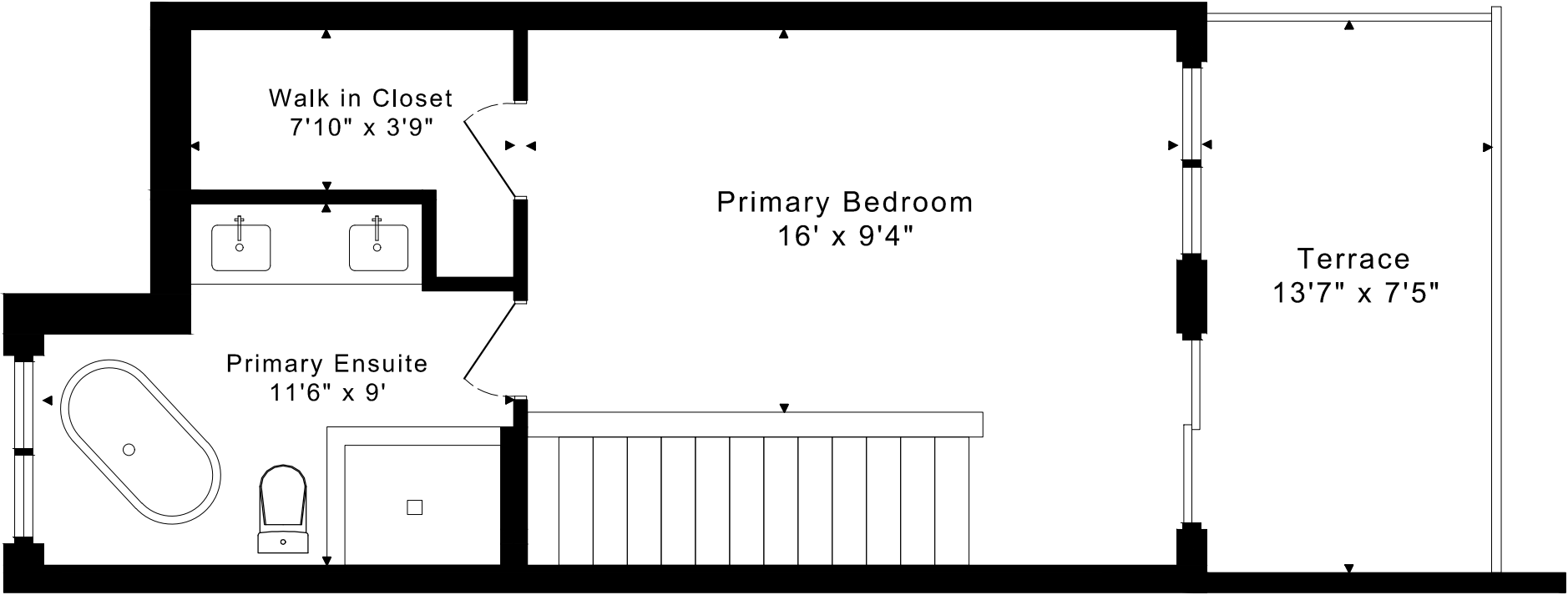
67 EDWARD HORTON CRESCENT
FLOOR PLANS

SECOND FLOOR 530 SQUARE FEET



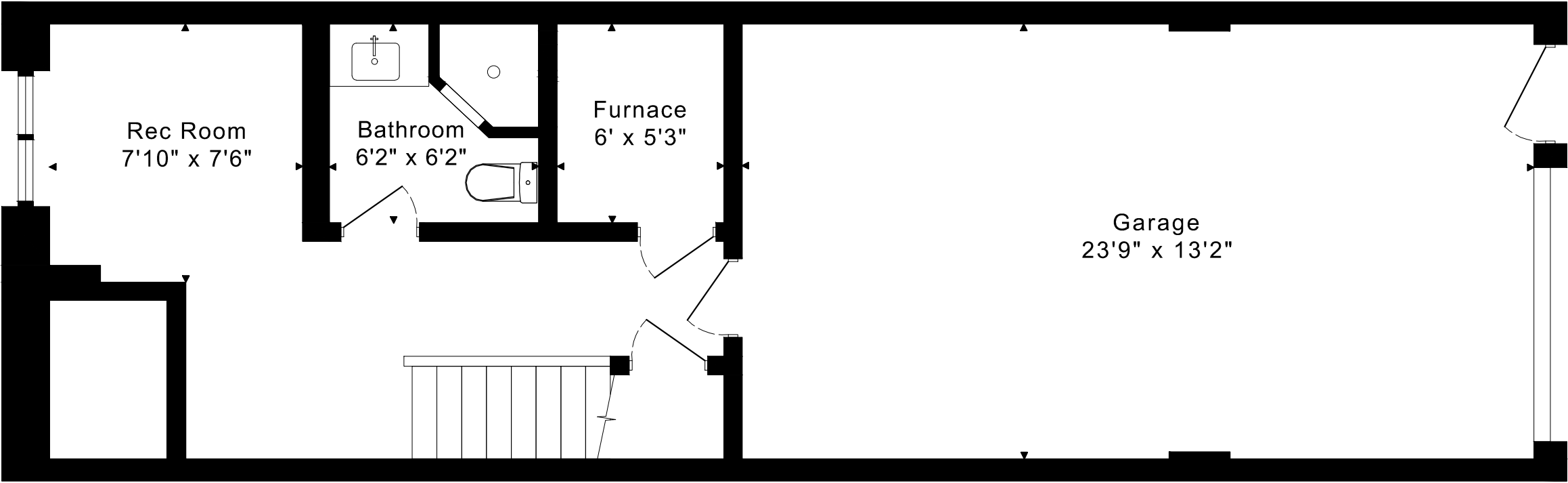
67 EDWARD HORTON CRESCENT
FLOOR PLANS

THIRD FLOOR 400 SQUARE FEET



67 EDWARD HORTON CRESCENT
FLOOR PLANS

LOWER FLOOR 320 SQUARE FEET



67 EDWARD HORTON CRESCENT ROOM MEASUREMENTS

Floor	Room	Imperial						Metric [m]		
		Length		Width		Height		Length	Width	Height
		Feet	Inches	Feet	Inches	Feet	Inches			
Third	Primary Bedroom	16	0	9	4	9	0	4,88	2,84	2,74
	Primary Ensuite	11	6	9	0	8	0	3,51	2,74	2,44
	Walk in Closet	7	10	3	9	8	0	2,39	1,14	2,44
	Terrace	13	7	7	5	0	0	4,14	2,26	0,00
Second	Second Bedroom	13	1	8	2	8	1	3,99	2,49	2,46
	Third Bedroom	10	10	8	5	8	1	3,30	2,57	2,46
	Bathroom	7	9	6	0	7	2	2,36	1,83	2,18
	Laundry Room	6	4	6	0	7	2	1,93	1,83	2,18
Main	Entry	4	5	3	11	13	0	1,35	1,19	3,96
	Living/Dining Room	18	10	9	8	9	0	5,74	2,95	2,74
	Kitchen/Breakfast Area	16	1	13	3	9	0	4,90	4,04	2,74
	Terrace	13	6	10	3	0	0	4,11	3,12	0,00
Lower	Rec Room	7	10	7	6	8	0	2,39	2,29	2,44
	Furnace	6	0	5	3	8	0	1,83	1,60	2,44
	Bathroom	6	2	6	2	8	0	1,88	1,88	2,44
	Garage	23	9	13	2	7	6	7,24	4,01	2,29

The following is a disclaimer regarding the approximate nature of dimensions and floor areas listed in this document:

Disclaimer:

The dimensions and floor areas listed in this document are provided as an estimate only and are intended to be used for illustration purposes only. These measurements are not necessarily meant to be a perfect representation of the actual space.

Notes regarding measurement methods and accuracy:

The utilization of laser measurement technology during the 3D model capturing process at the location provides an accurate representation of floor plans, with a typical margin of error of 3-5%. For the most accurate and official measurement data, it is advised to consult official documents such as MPAC records, builder's pre-construction plans, or data from certified measurement companies.

Exterior wall thickness is included in the calculation of the overall square footage and is considered as a component of the footprint. The wall thickness measurement is obtained onsite whenever possible, or estimated in the event where obtaining onsite measurements is not possible, such as in the case of condominium buildings where wall thickness may vary throughout the building.