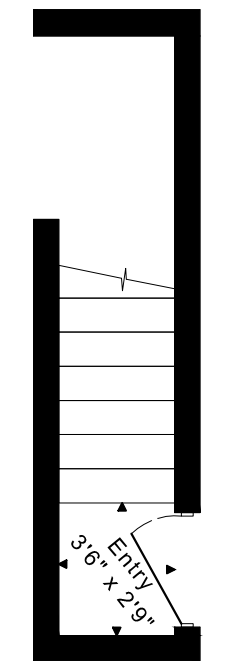
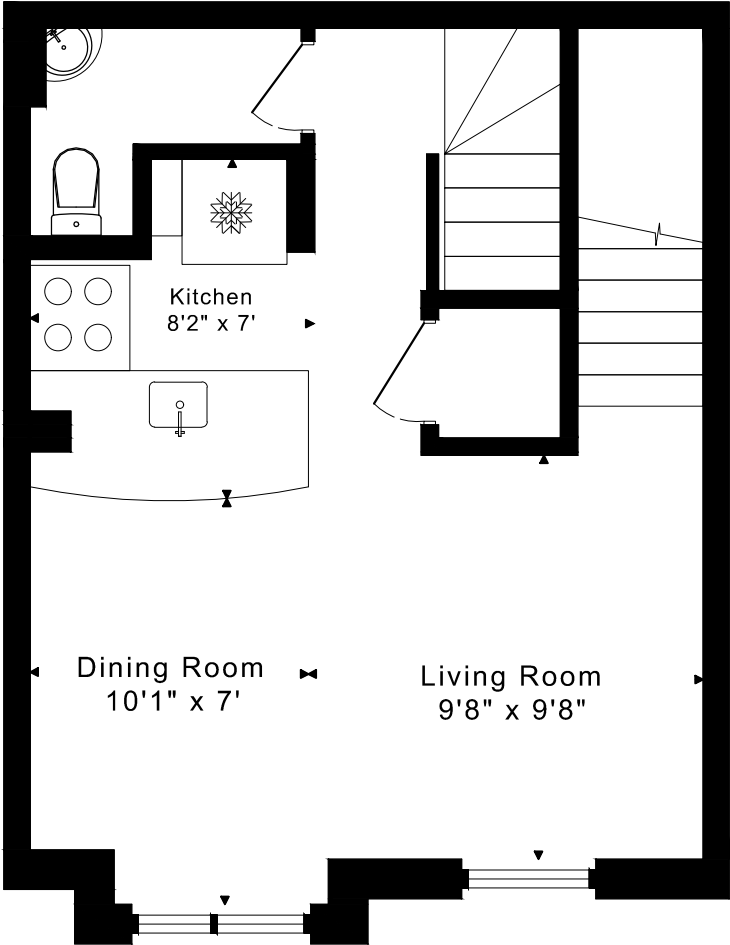


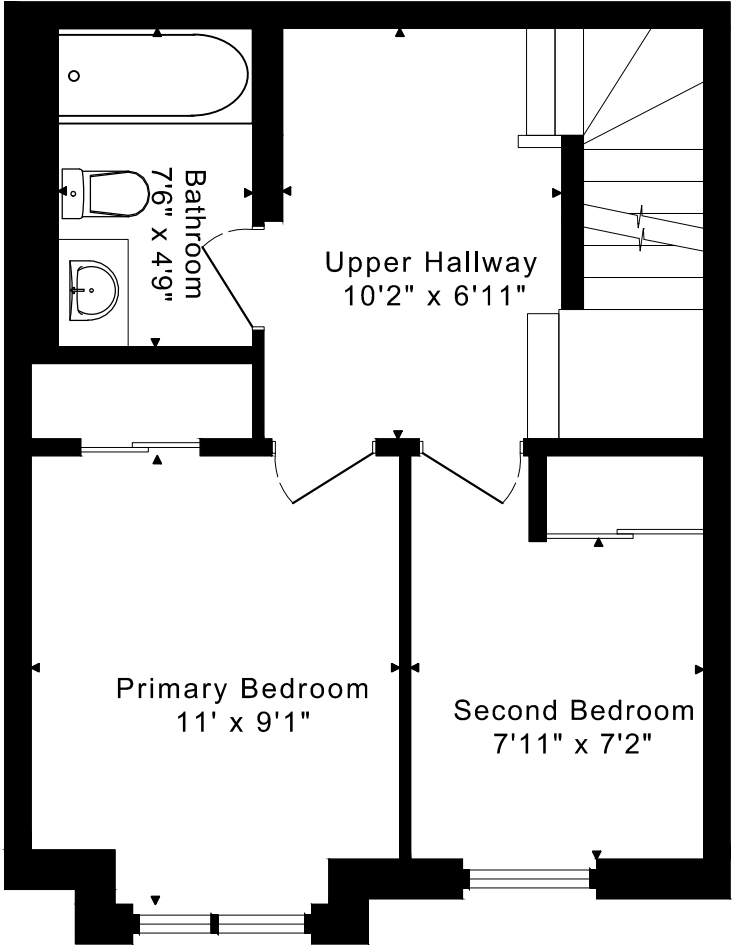
3 EVERSON DRIVE UNIT 627
FLOOR PLANS



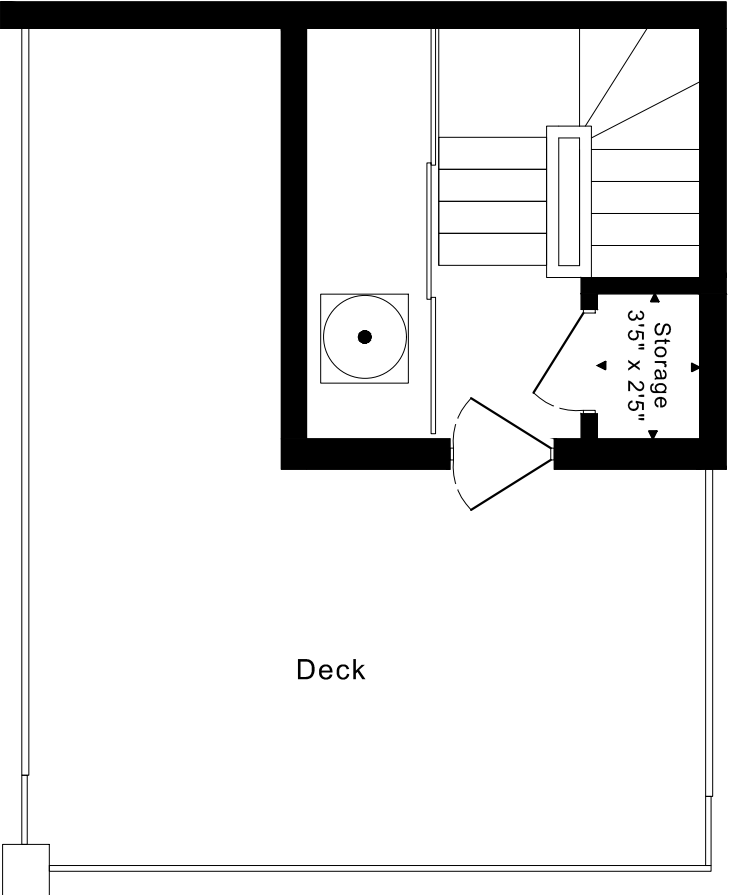
MAIN FLOOR
25 SQUARE FEET



SECOND FLOOR
380 SQUARE FEET



THIRD FLOOR
380 SQUARE FEET

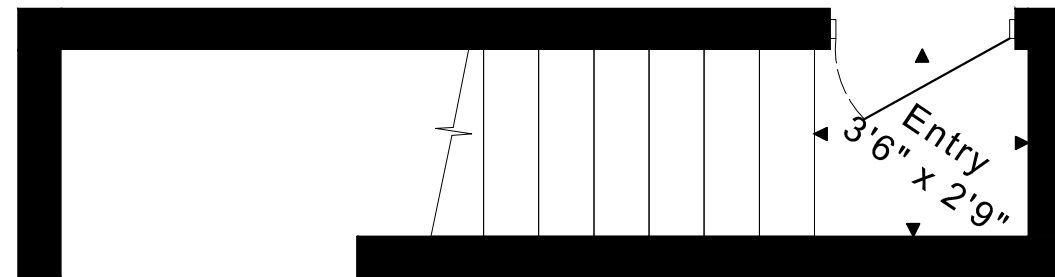


FOURTH FLOOR
125 SQUARE FEET

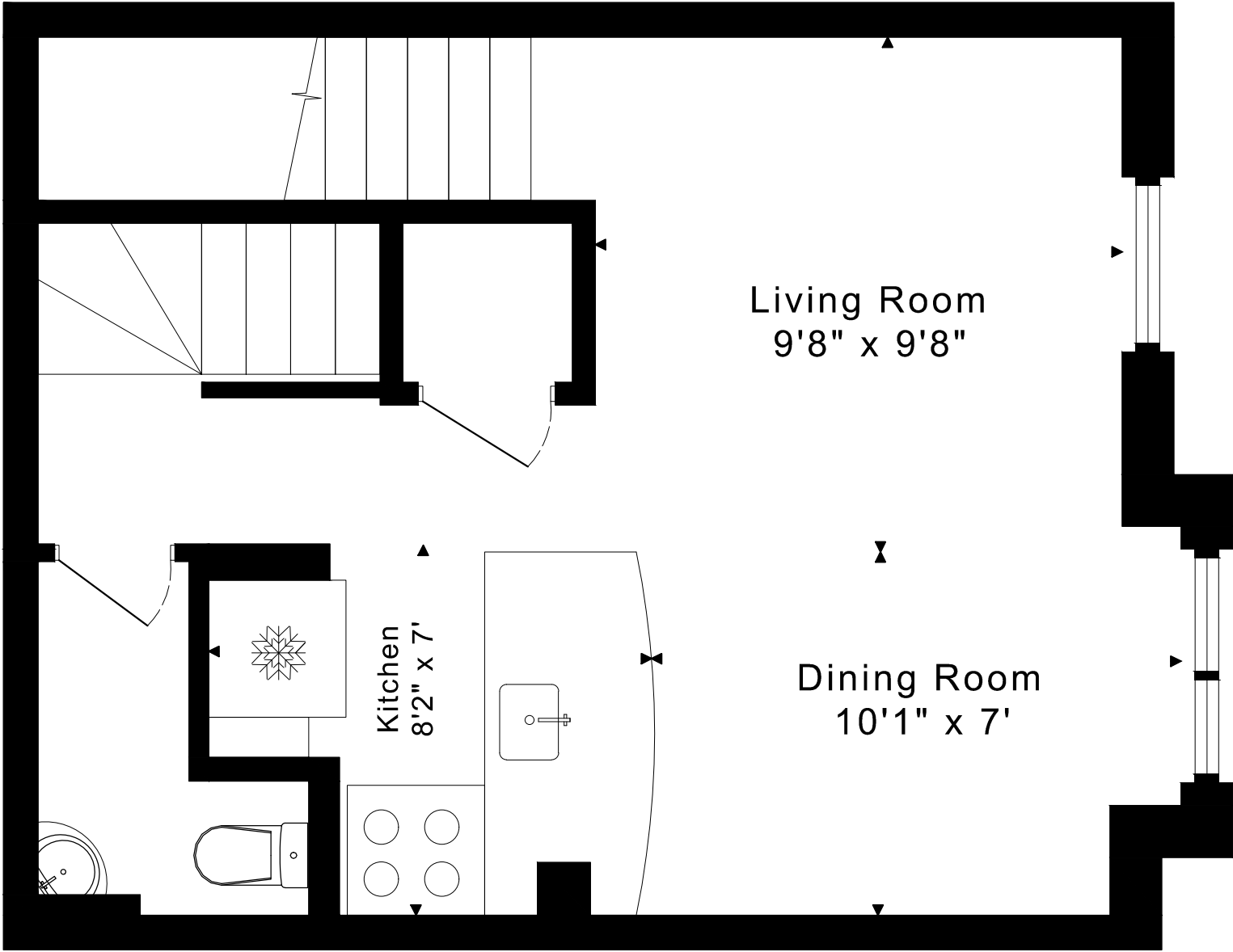
910 sq ft

3 EVERSON DRIVE UNIT 627 FLOOR PLANS

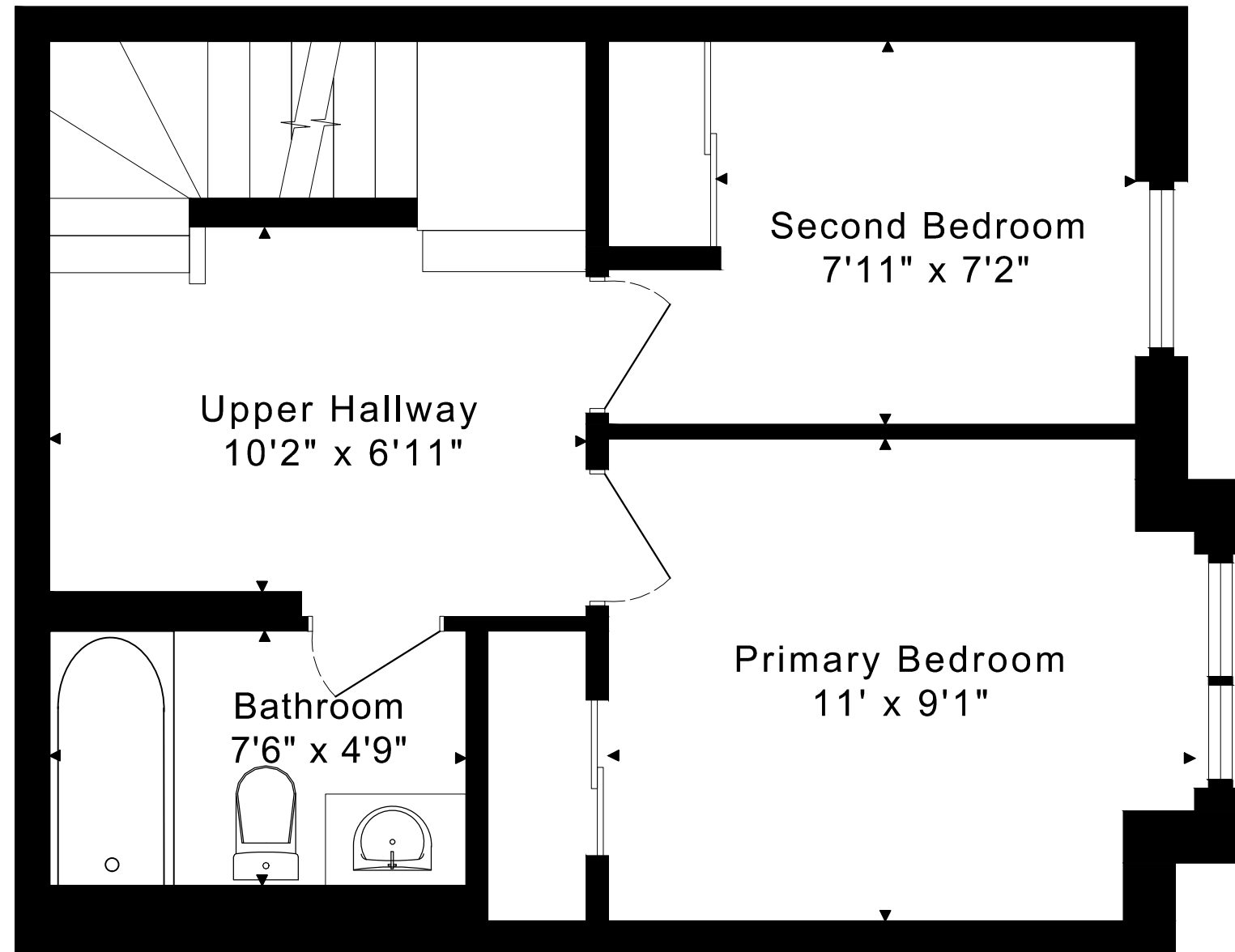
MAIN FLOOR 25 SQUARE FEET



3 EVERSON DRIVE UNIT 627
FLOOR PLANS
SECOND FLOOR 380 SQUARE FEET

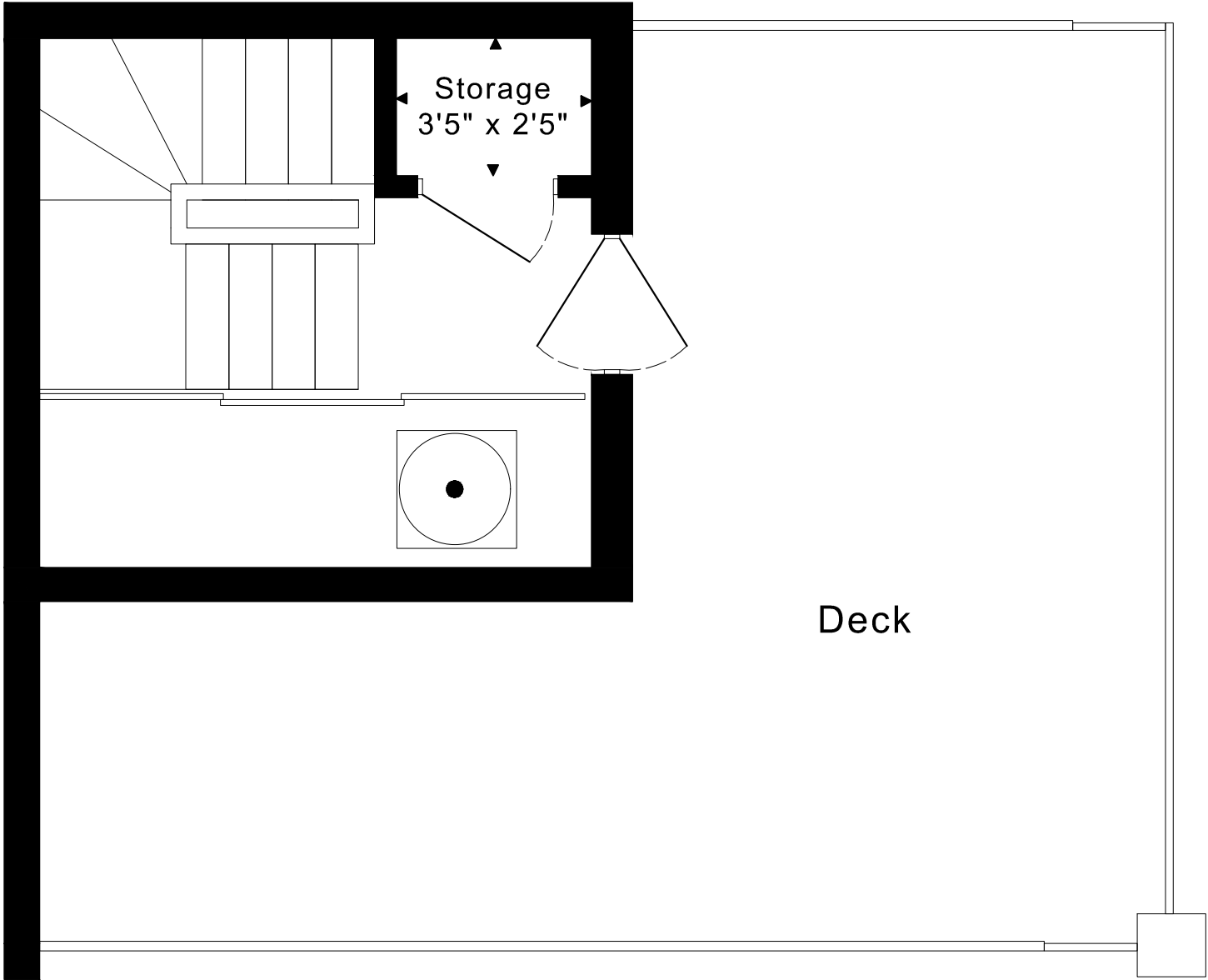


3 EVERSON DRIVE UNIT 627
FLOOR PLANS
THIRD FLOOR 380 SQUARE FEET



3 EVERSON DRIVE UNIT 627
FLOOR PLANS

FOURTH FLOOR 125 SQUARE FEET



3 EVERSON DRIVE UNIT 627 ROOM MEASUREMENTS

Floor	Room	Imperial						Metric [m]		
		Length		Width		Height		Length	Width	Height
		Feet	Inches	Feet	Inches	Feet	Inches			
Fourth	Storage	3	5	2	5	7	11	1,04	0,74	2,41
Third	Primary Bedroom	11	0	9	1	8	4	3,35	2,77	2,54
	Second Bedroom	7	11	7	2	8	4	2,41	2,18	2,54
	Bathroom	7	6	4	9	6	9	2,29	1,45	2,06
	Upper Hallway	10	2	6	11	7	3	3,10	2,11	2,21
Second	Living Room	9	8	9	8	8	1	2,95	2,95	2,46
	Dining Room	10	1	7	0	8	1	3,07	2,13	2,46
	Kitchen	8	2	7	0	8	1	2,49	2,13	2,46
Main	Entry	3	6	2	9	8	7	1,07	0,84	2,62

The following is a disclaimer regarding the approximate nature of dimensions and floor areas listed in this document:

Disclaimer:

The dimensions and floor areas listed in this document are provided as an estimate only and are intended to be used for illustration purposes only. These measurements are not necessarily meant to be a perfect representation of the actual space.

Notes regarding measurement methods and accuracy:

The utilization of laser measurement technology during the 3D model capturing process at the location provides an accurate representation of floor plans, with a typical margin of error of 3-5%. For the most accurate and official measurement data, it is advised to consult official documents such as MPAC records, builder's pre-construction plans, or data from certified measurement companies.

Exterior wall thickness is included in the calculation of the overall square footage and is considered as a component of the footprint. The wall thickness measurement is obtained onsite whenever possible, or estimated in the event where obtaining onsite measurements is not possible, such as in the case of condominium buildings where wall thickness may vary throughout the building.