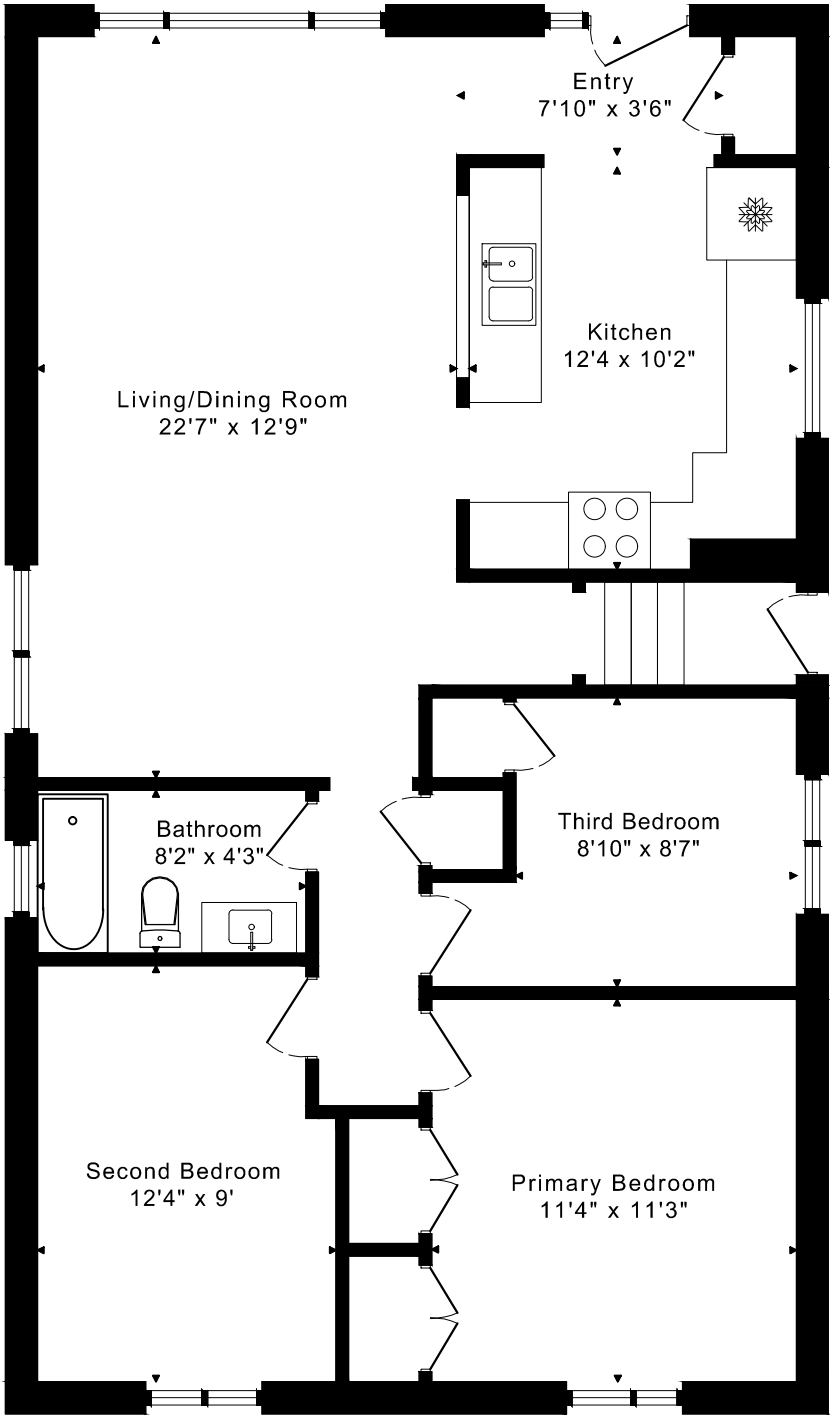
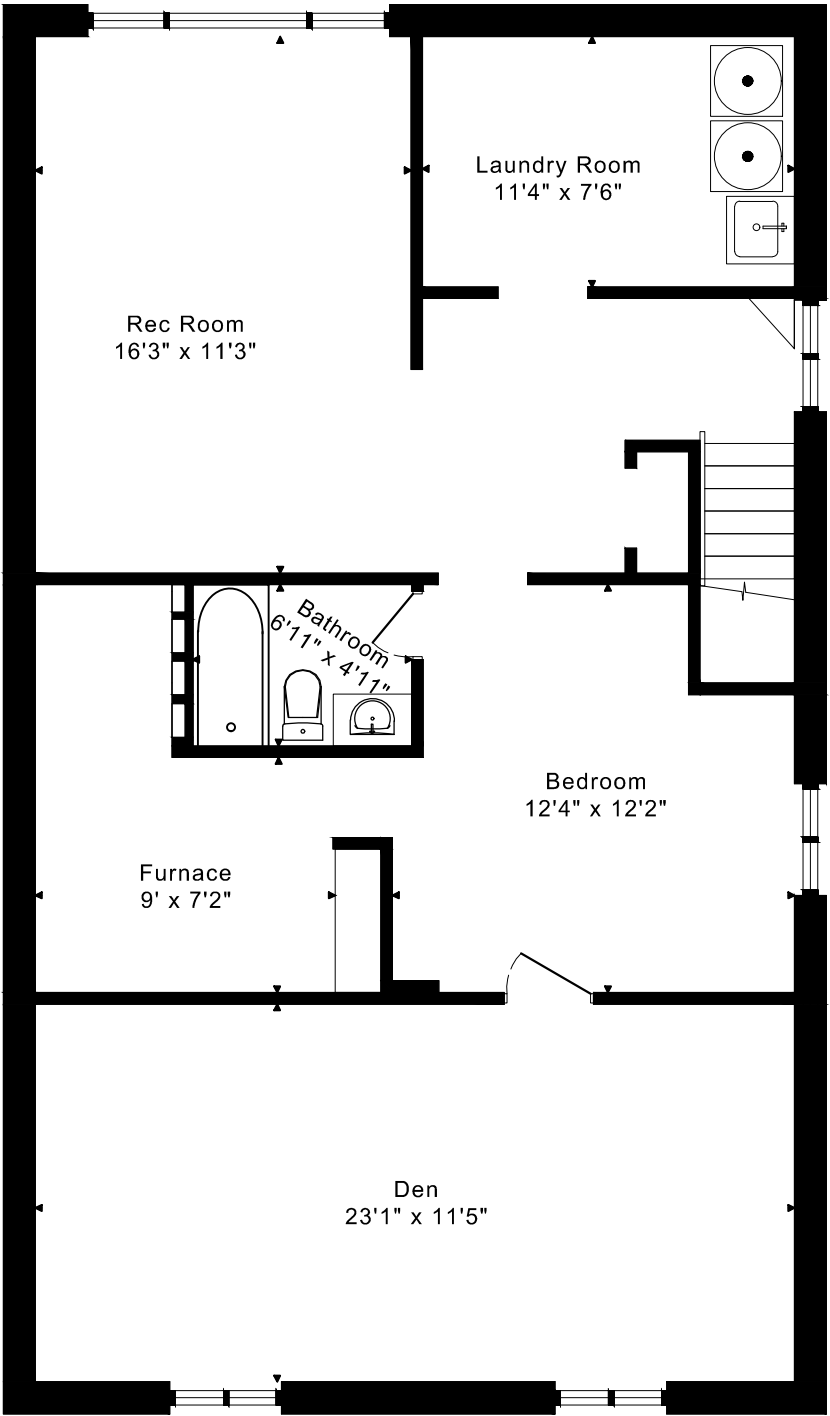


12 JASMINE ROAD
FLOOR PLANS



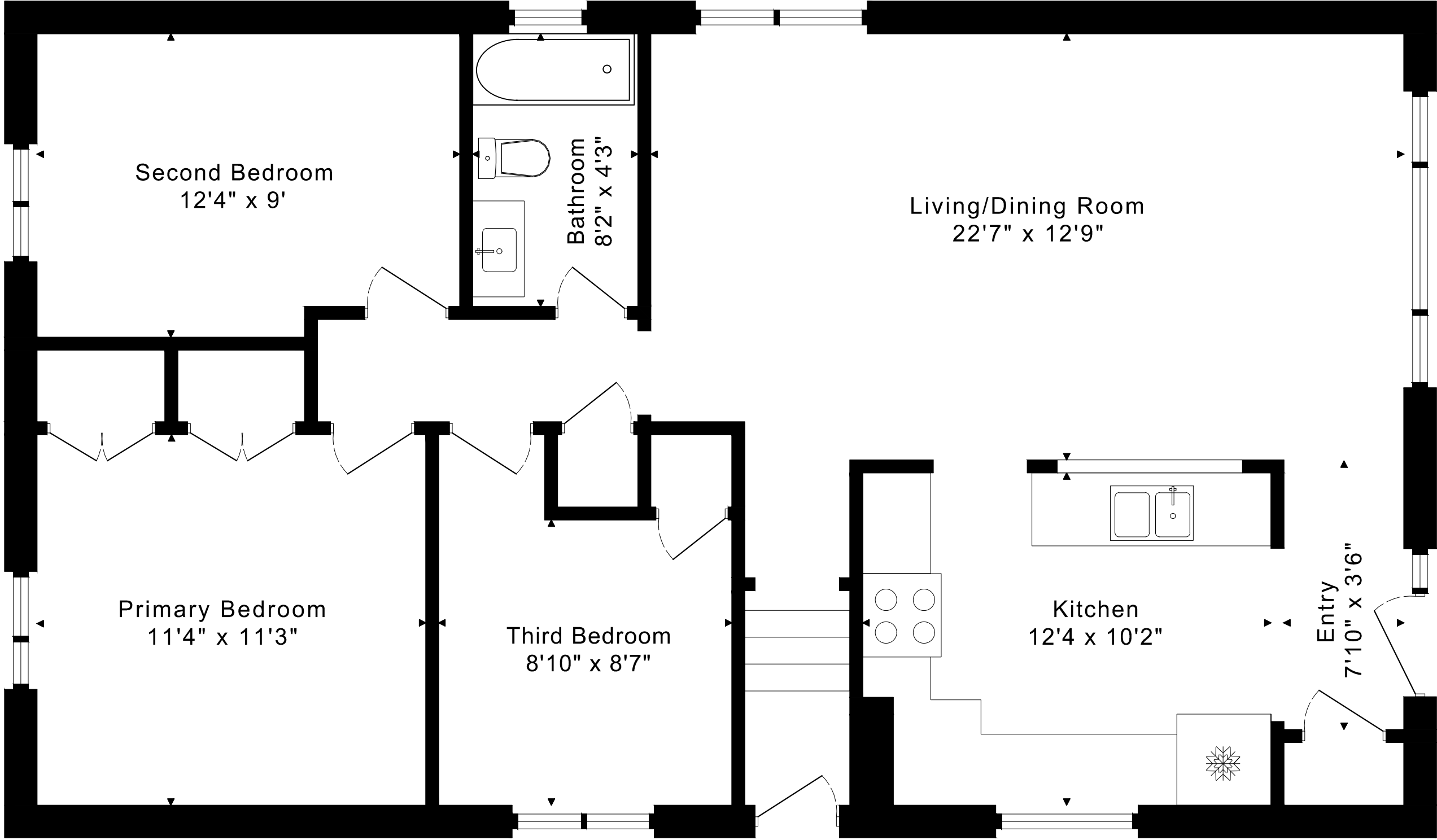
MAIN FLOOR
1090 SQUARE FEET



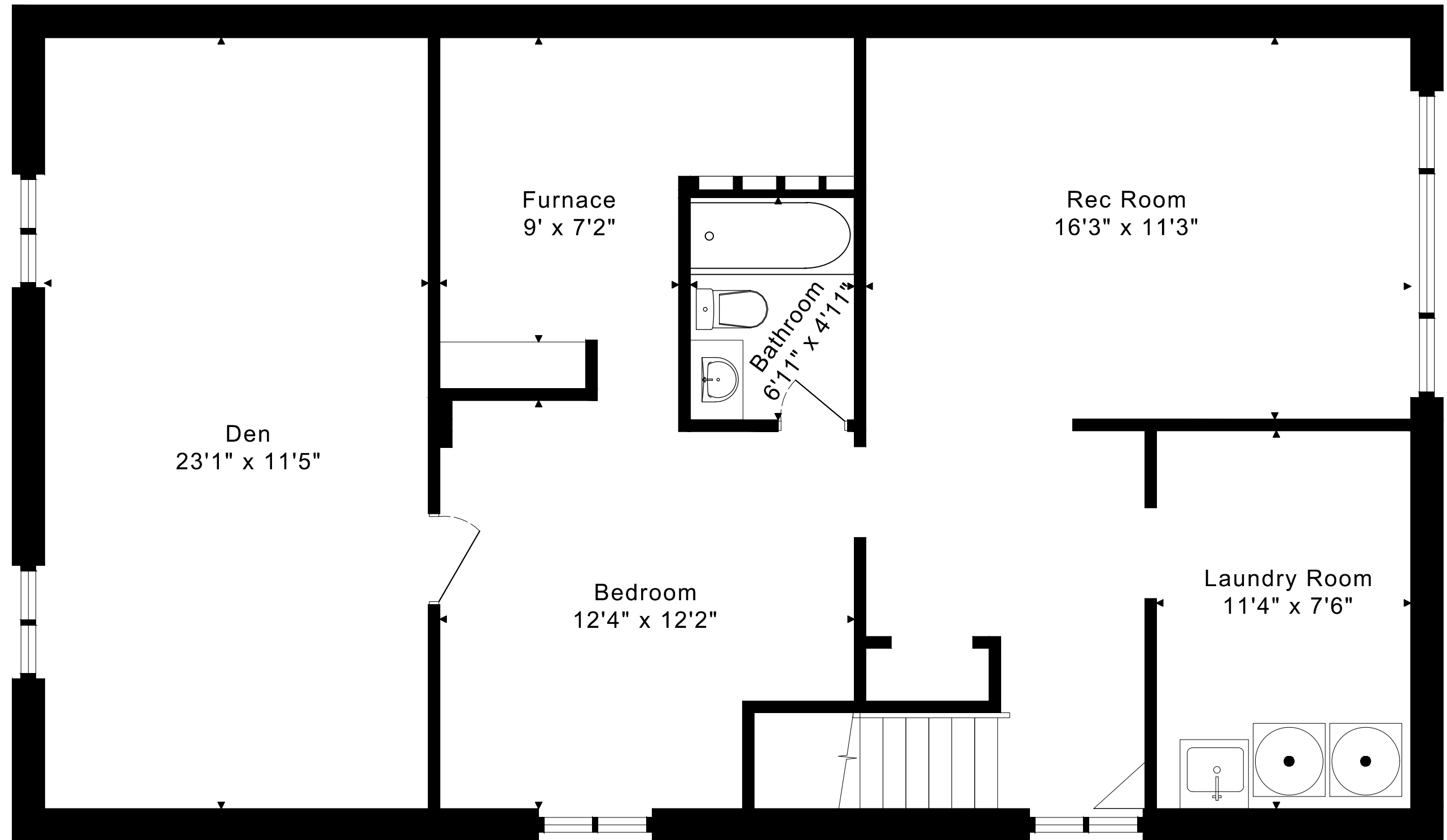
LOWER FLOOR
1090 SQUARE FEET

1090 sq ft + 1090 sq ft
BELOW GRADE

12 JASMINE ROAD
FLOOR PLANS
MAIN FLOOR 1090 SQUARE FEET



12 JASMINE ROAD
FLOOR PLANS
LOWER FLOOR 1090 SQUARE FEET



12 JASMINE ROAD ROOM MEASUREMENTS

Floor	Room	Imperial						Metric [m]		
		Length		Width		Height		Length	Width	Height
		Feet	Inches	Feet	Inches	Feet	Inches			
Main	Entry	7	10	3	6	8	1	2,39	0,91	2,46
	Living/Dining Room	22	7	12	9	8	1	6,88	3,66	2,46
	Kitchen	12	4	10	2	8	1	3,76	3,05	2,46
	Primary Bedroom	11	4	11	3	8	1	3,45	3,35	2,46
	Second Bedroom	12	4	9	0	8	1	3,76	2,74	2,46
	Third Bedroom	8	10	8	7	8	1	2,69	2,44	2,46
	Bathroom	8	2	4	3	8	1	2,49	1,22	2,46
Lower	Rec Room	16	3	11	3	7	1	4,95	3,35	2,16
	Bedroom	12	4	12	2	7	1	3,76	3,66	2,16
	Bathroom	6	11	4	11	7	1	2,11	1,22	2,16
	Den	23	1	11	5	7	0	7,04	3,35	2,13
	Laundry Room	11	4	7	6	7	1	3,45	2,13	2,16
	Furnace	9	0	7	2	7	1	2,74	2,13	2,16

CAPTURED ON: 3 MAR. 2025
DIMENSIONS ARE APPROXIMATE AND SHOULD BE CONSIDERED
ILLUSTRATIVE ONLY.

1090 sq ft + 1090 sq ft
BELOW GRADE

The following is a disclaimer regarding the approximate nature of dimensions and floor areas listed in this document:

Disclaimer:

The dimensions and floor areas listed in this document are provided as an estimate only and are intended to be used for illustration purposes only. These measurements are not necessarily meant to be a perfect representation of the actual space.

Notes regarding measurement methods and accuracy:

The utilization of laser measurement technology during the 3D model capturing process at the location provides an accurate representation of floor plans, with a typical margin of error of 3-5%. For the most accurate and official measurement data, it is advised to consult official documents such as MPAC records, builder's pre-construction plans, or data from certified measurement companies.

Exterior wall thickness is included in the calculation of the overall square footage and is considered as a component of the footprint. The wall thickness measurement is obtained onsite whenever possible, or estimated in the event where obtaining onsite measurements is not possible, such as in the case of condominium buildings where wall thickness may vary throughout the building.