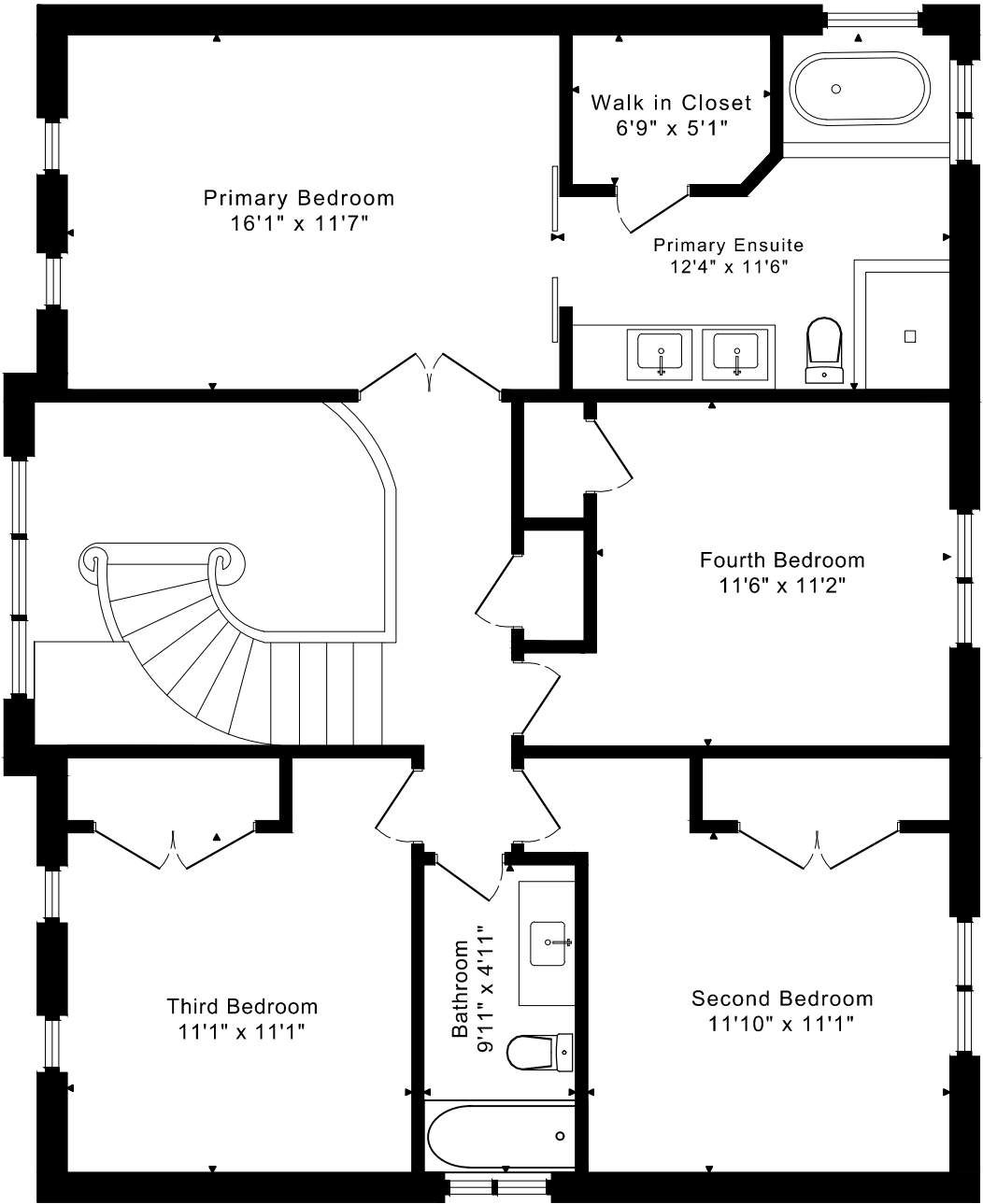
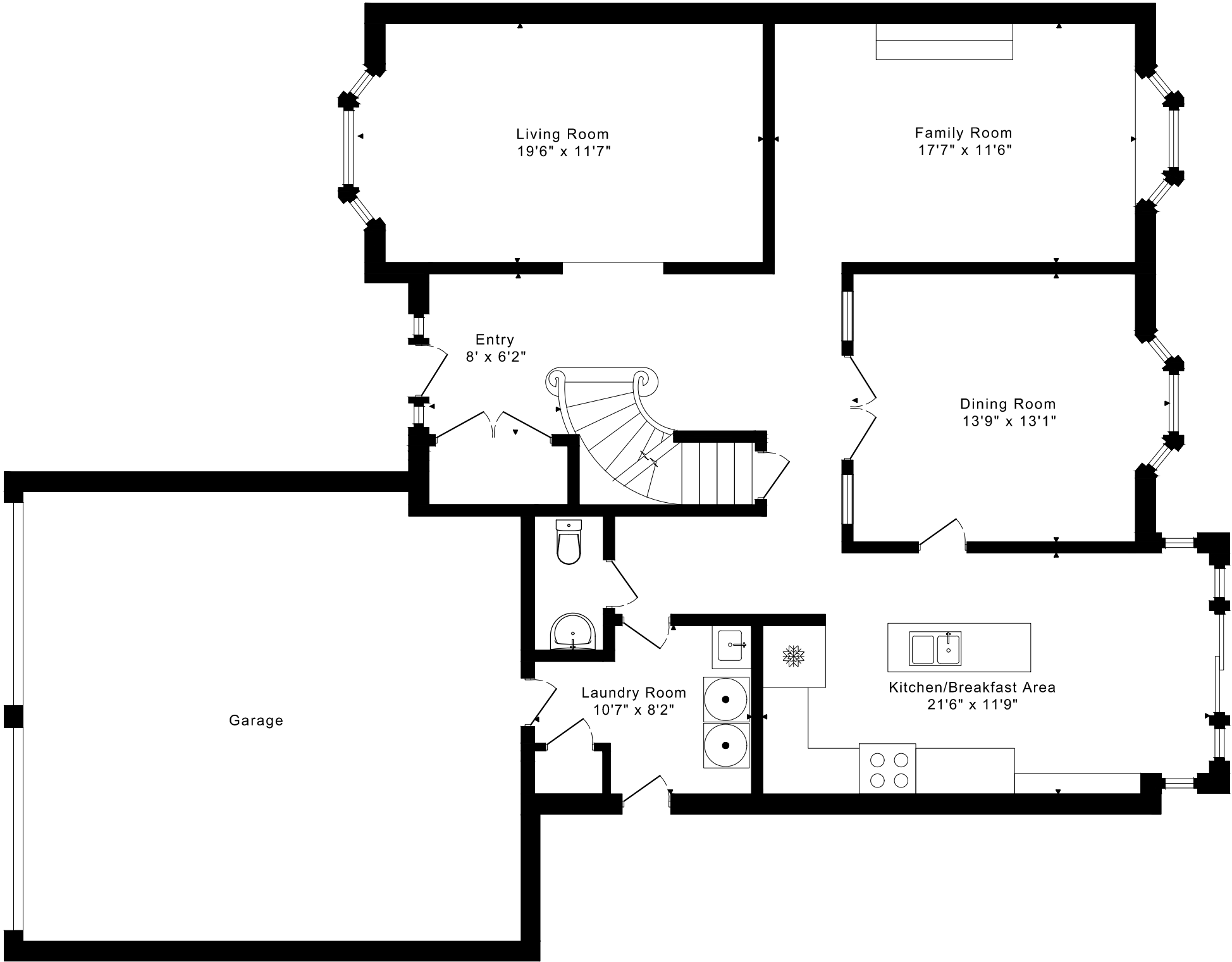


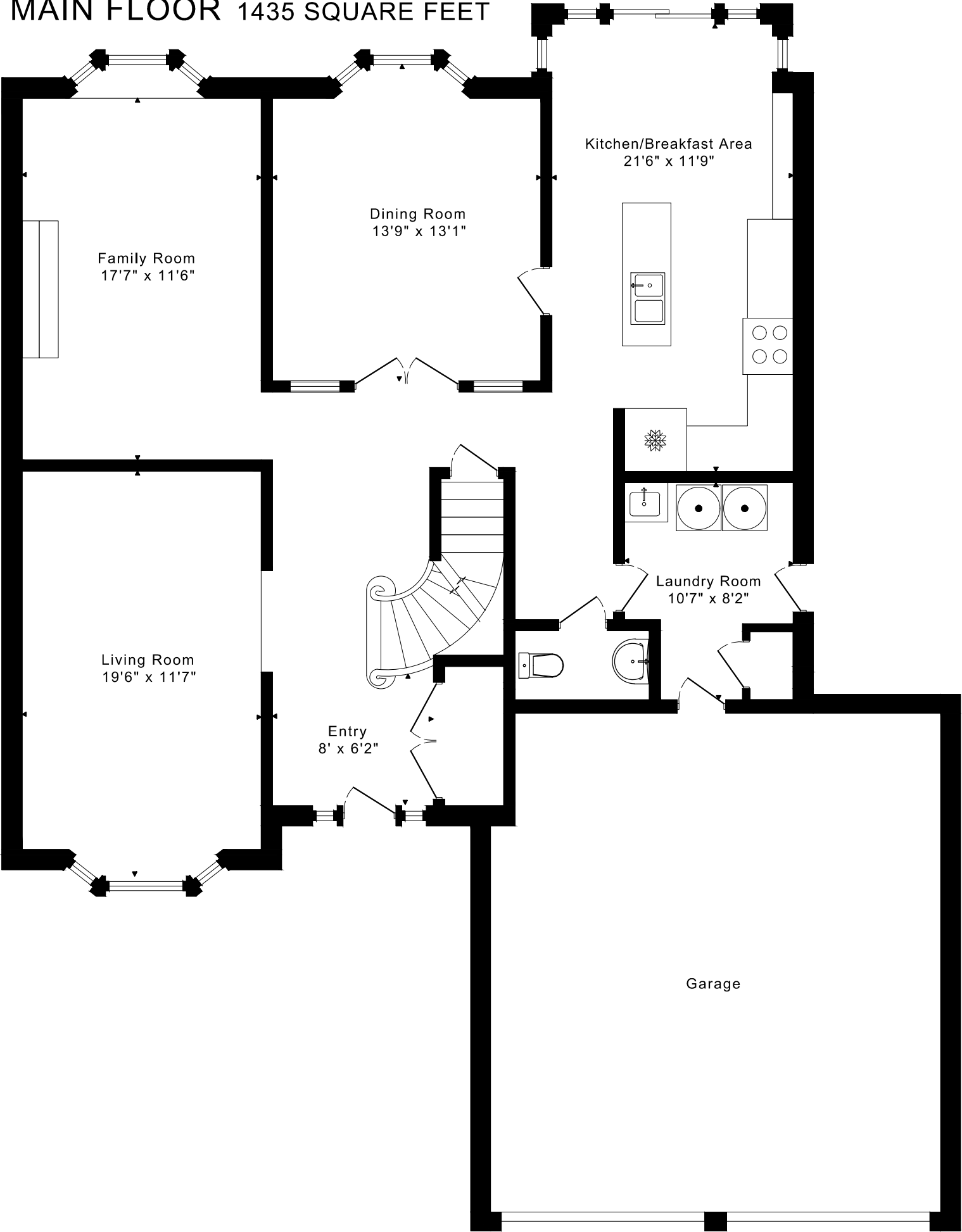
369 CLAREMONT CRESCFENT
FLOOR PLANS



2525 sq ft

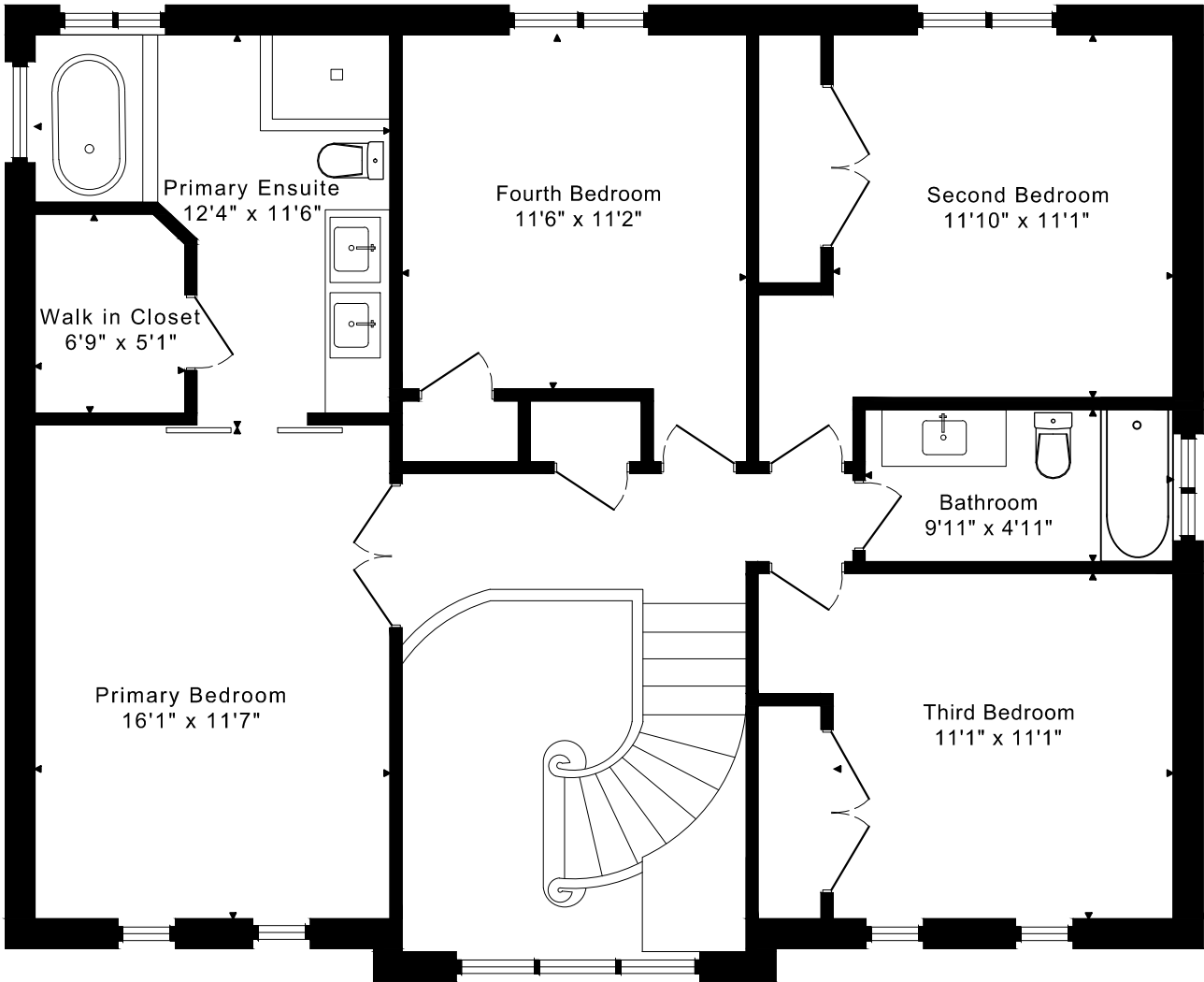
369 CLAREMONT CRESCFENT FLOOR PLANS

MAIN FLOOR 1435 SQUARE FEET



369 CLAREMONT CRESCFENT
FLOOR PLANS

SECOND FLOOR 1090 SQUARE FEET



369 CLAREMONT CRESCENT ROOM MEASUREMENTS

Floor	Room	Imperial						Metric [m]		
		Length		Width		Height		Length	Width	Height
		Feet	Inches	Feet	Inches	Feet	Inches			
Second	Primary Bedroom	16	1	11	7	8	1	4,90	3,53	2,46
	Primary Ensuite	12	4	11	6	8	1	3,76	3,51	2,46
	Walk in Closet	6	9	5	1	8	1	2,06	1,55	2,46
	Second Bedroom	11	10	11	1	8	1	3,61	3,38	2,46
	Third Bedroom	11	1	11	1	8	1	3,38	3,38	2,46
	Fourth Bedroom	11	6	11	2	8	1	3,51	3,40	2,46
	Bathroom	9	11	4	11	8	1	3,02	1,50	2,46
Main	Entry	8	0	6	2	8	1	2,44	1,88	2,46
	Living Room	19	6	11	7	8	10	5,94	3,53	2,69
	Dining Room	13	9	13	1	8	1	4,19	3,99	2,46
	Kitchen/Breakfast Area	21	6	11	9	8	1	6,55	3,58	2,46
	Family Room	17	7	11	6	8	1	5,36	3,51	2,46
	Laundry Room	10	7	8	2	8	1	3,23	2,49	2,46

The following is a disclaimer regarding the approximate nature of dimensions and floor areas listed in this document:

Disclaimer:

The dimensions and floor areas listed in this document are provided as an estimate only and are intended to be used for illustration purposes only. These measurements are not necessarily meant to be a perfect representation of the actual space.

Notes regarding measurement methods and accuracy:

The utilization of laser measurement technology during the 3D model capturing process at the location provides an accurate representation of floor plans, with a typical margin of error of 3-5%. For the most accurate and official measurement data, it is advised to consult official documents such as MPAC records, builder's pre-construction plans, or data from certified measurement companies.

Exterior wall thickness is included in the calculation of the overall square footage and is considered as a component of the footprint. The wall thickness measurement is obtained onsite whenever possible, or estimated in the event where obtaining onsite measurements is not possible, such as in the case of condominium buildings where wall thickness may vary throughout the building.