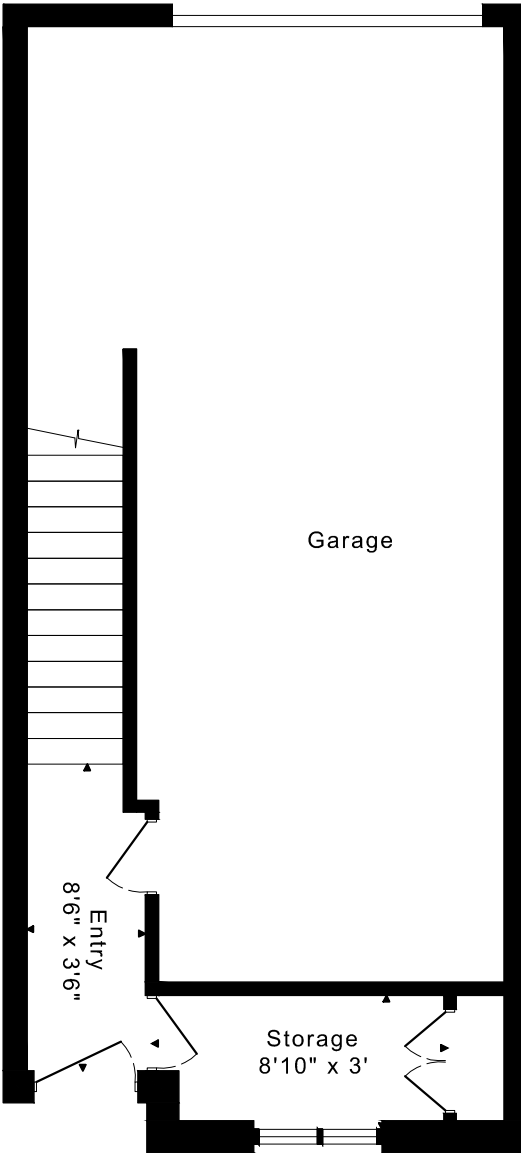
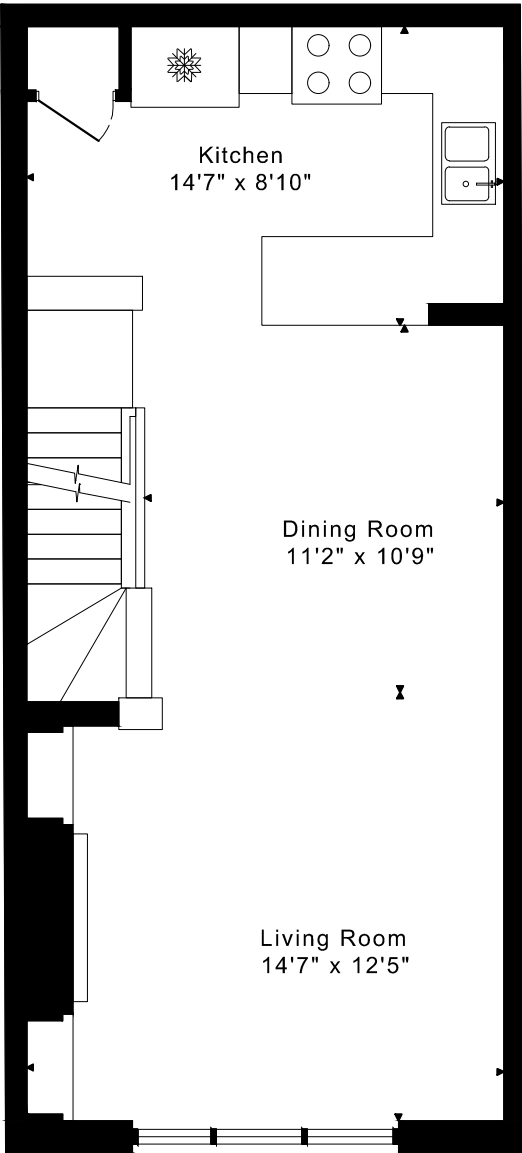


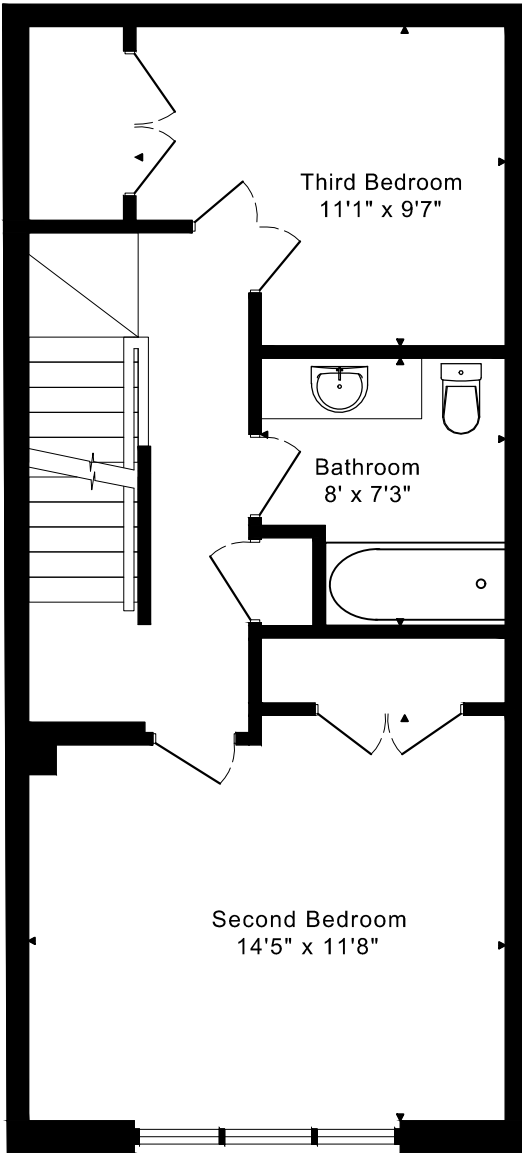
7 POPLAR AVENUE
FLOOR PLANS



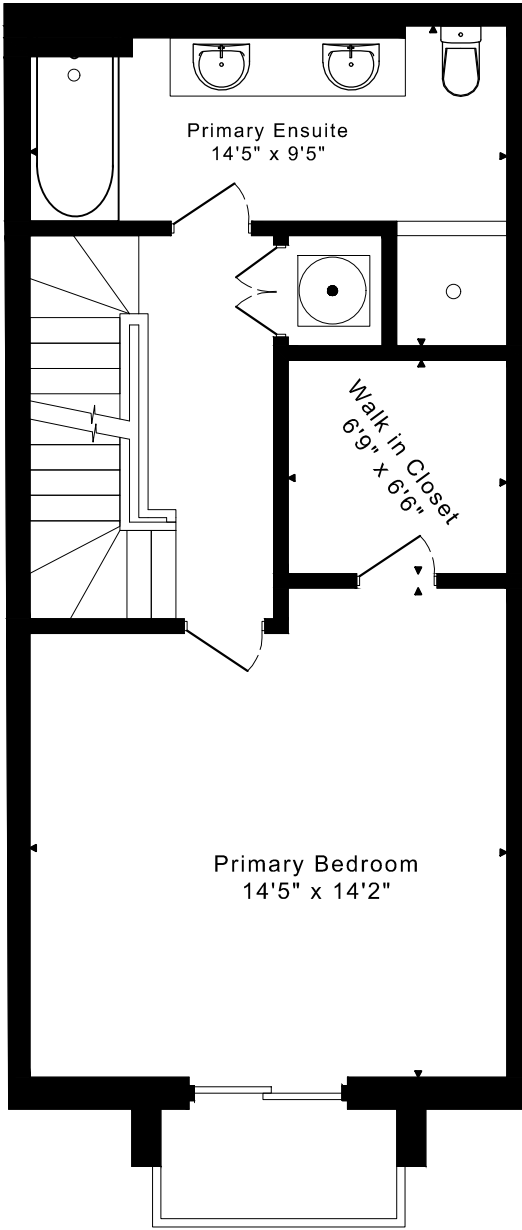
MAIN FLOOR
125 SQUARE FEET



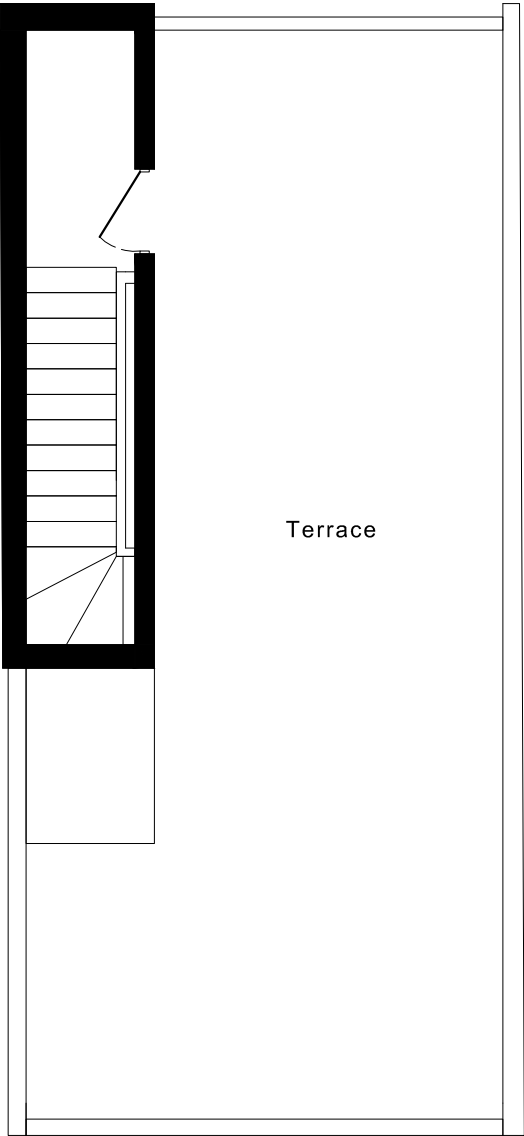
SECOND FLOOR
535 SQUARE FEET



THIRD FLOOR
535 SQUARE FEET



FOURTH FLOOR
515 SQUARE FEET

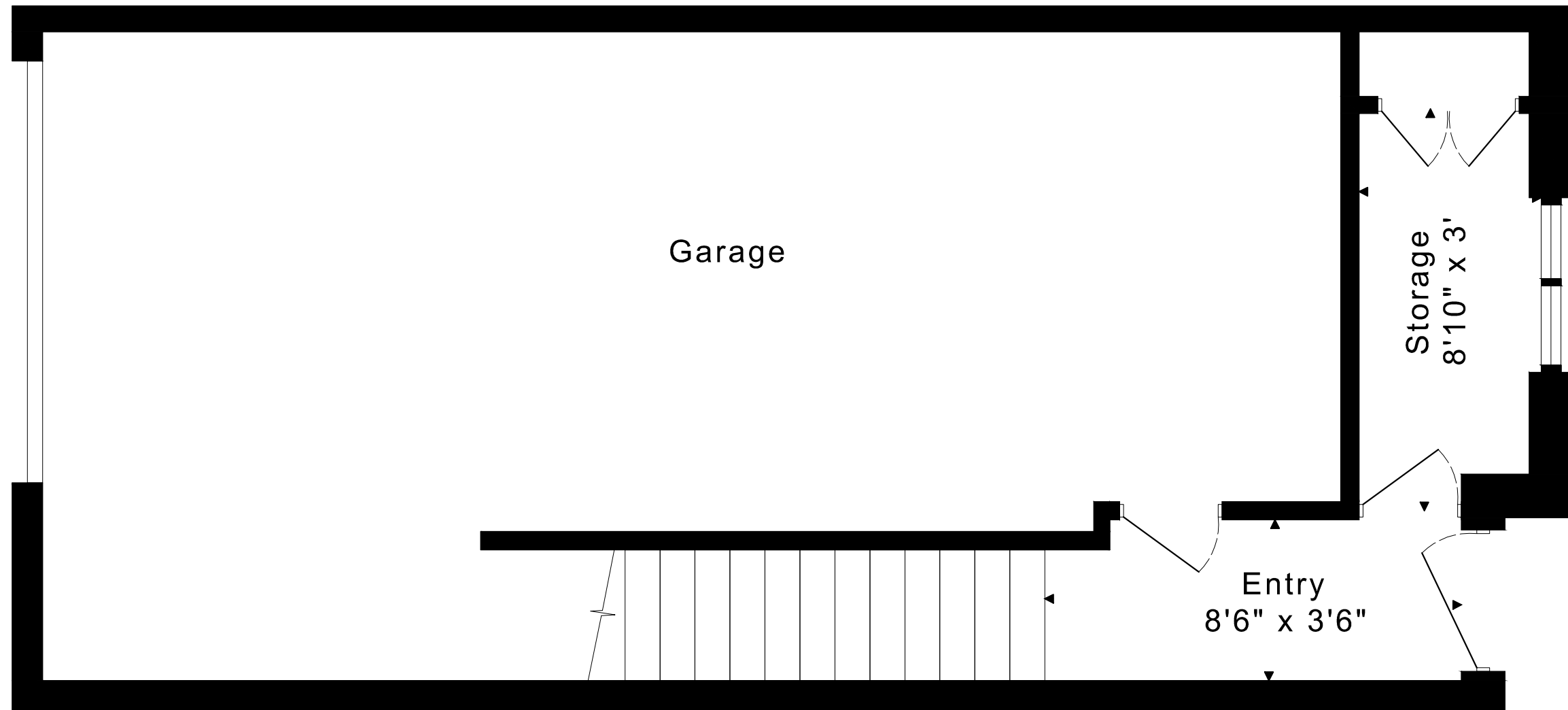


FIFTH FLOOR
90 SQUARE FEET

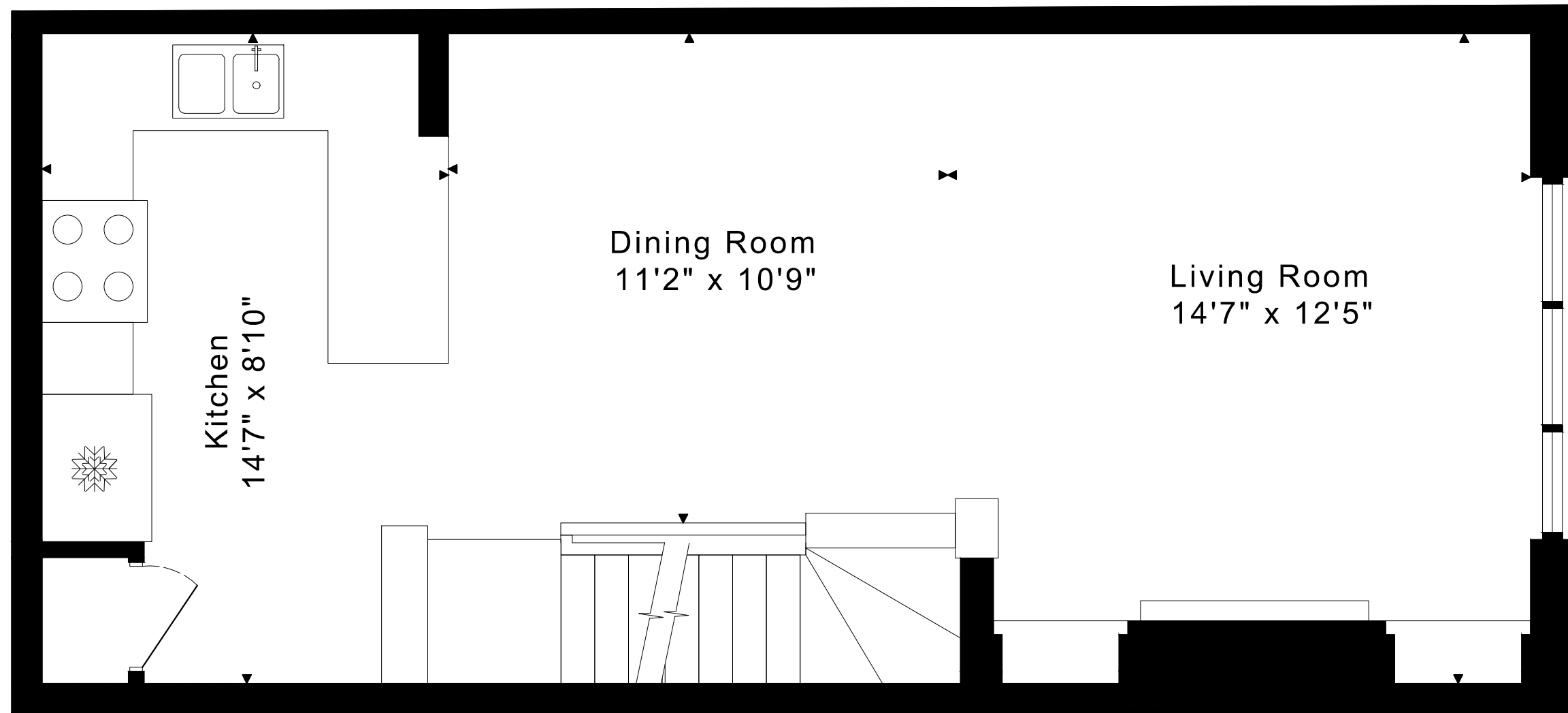
1800 sq ft

7 POPLAR AVENUE FLOOR PLANS

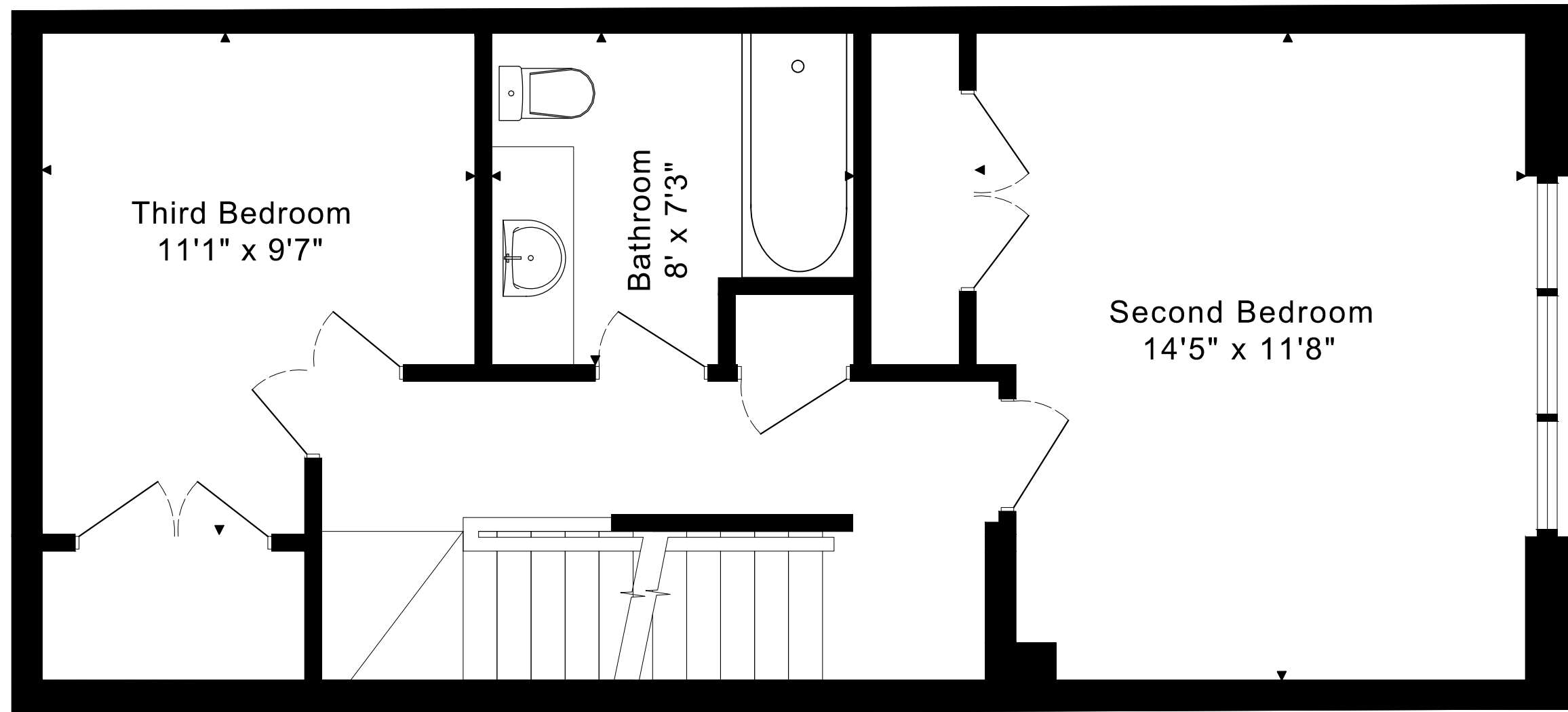
MAIN FLOOR 125 SQUARE FEET



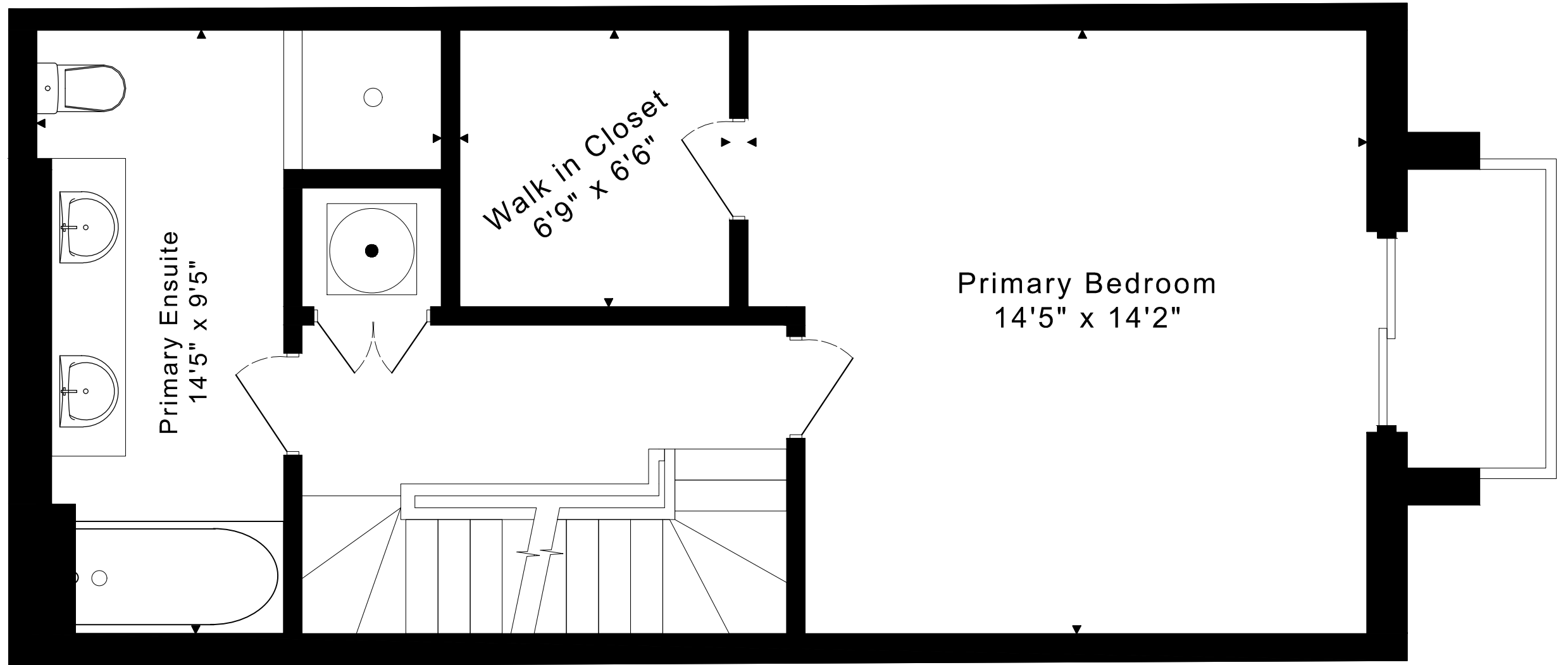
7 POPLAR AVENUE
FLOOR PLANS
SECOND FLOOR 535 SQUARE FEET



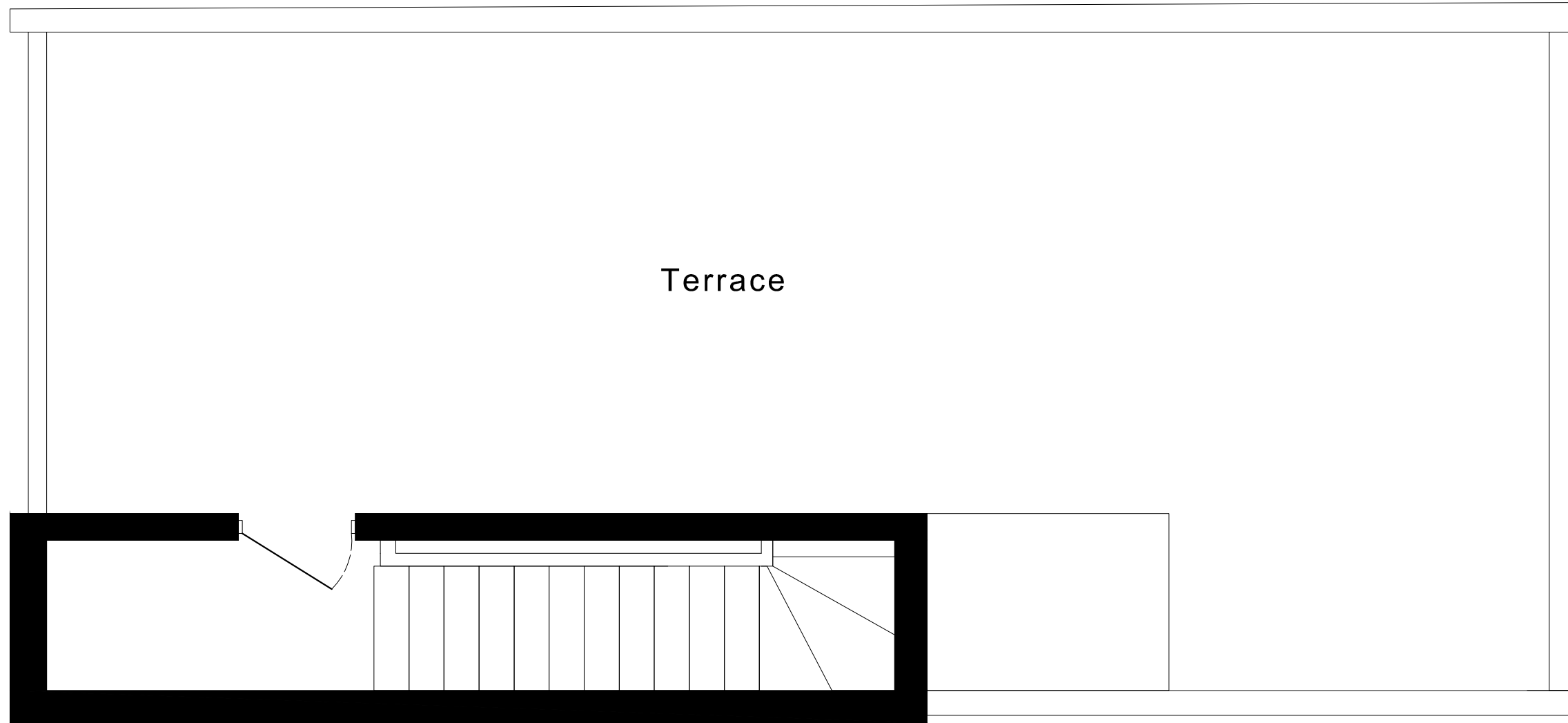
7 POPLAR AVENUE
FLOOR PLANS
THIRD FLOOR 535 SQUARE FEET



7 POPLAR AVENUE
FLOOR PLANS
FOURTH FLOOR 515 SQUARE FEET



7 POPLAR AVENUE
FLOOR PLANS
FIFTH FLOOR 90 SQUARE FEET



7 POPLAR AVENUE ROOM MEASUREMENTS

Floor	Room	Imperial						Metric [m]		
		Length		Width		Height		Length	Width	Height
		Feet	Inches	Feet	Inches	Feet	Inches			
Fourth	Primary Bedroom	14	5	14	2	9	0	4,39	4,32	2,74
	Primary Ensuite	14	5	9	5	8	2	4,39	2,87	2,49
	Walk in Closet	6	9	6	6	9	0	2,06	1,98	2,74
Third	Second Bedroom	14	5	11	8	8	0	4,39	3,56	2,44
	Third Bedroom	11	1	9	7	8	0	3,38	2,92	2,44
	Bathroom	8	0	7	3	7	3	2,44	2,21	2,21
Second	Living Room	14	7	12	5	9	6	4,45	3,78	2,90
	Dining Room	11	2	10	9	9	6	3,40	3,28	2,90
	Kitchen	14	7	8	10	9	6	4,45	2,69	2,90
Main	Entry	8	6	3	6	8	6	2,59	1,07	2,59
	Storage	8	10	3	0	8	6	2,69	0,91	2,59

The following is a disclaimer regarding the approximate nature of dimensions and floor areas listed in this document:

Disclaimer:

The dimensions and floor areas listed in this document are provided as an estimate only and are intended to be used for illustration purposes only. These measurements are not necessarily meant to be a perfect representation of the actual space.

Notes regarding measurement methods and accuracy:

The utilization of laser measurement technology during the 3D model capturing process at the location provides an accurate representation of floor plans, with a typical margin of error of 3-5%. For the most accurate and official measurement data, it is advised to consult official documents such as MPAC records, builder's pre-construction plans, or data from certified measurement companies.

Exterior wall thickness is included in the calculation of the overall square footage and is considered as a component of the footprint. The wall thickness measurement is obtained onsite whenever possible, or estimated in the event where obtaining onsite measurements is not possible, such as in the case of condominium buildings where wall thickness may vary throughout the building.