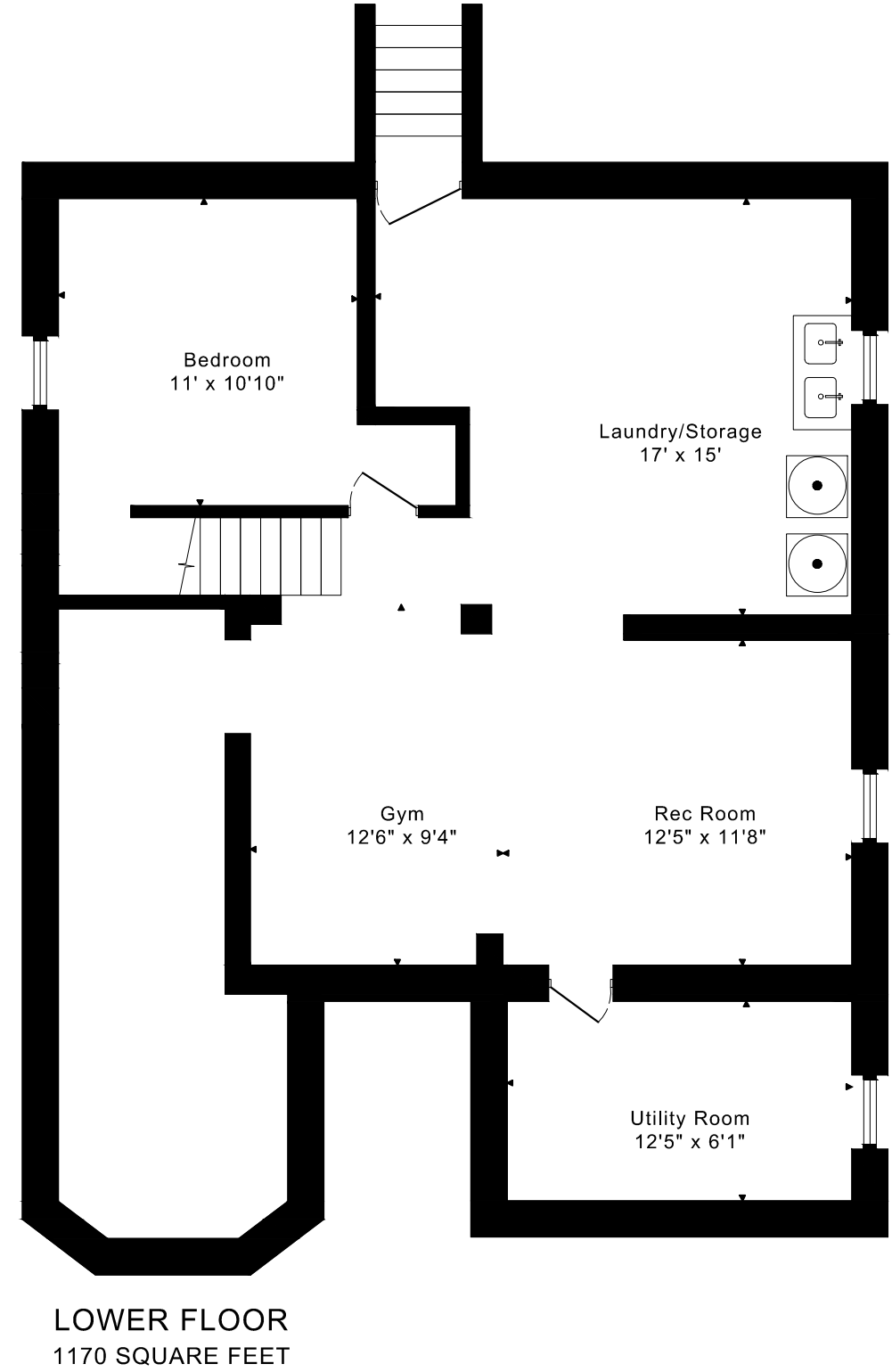
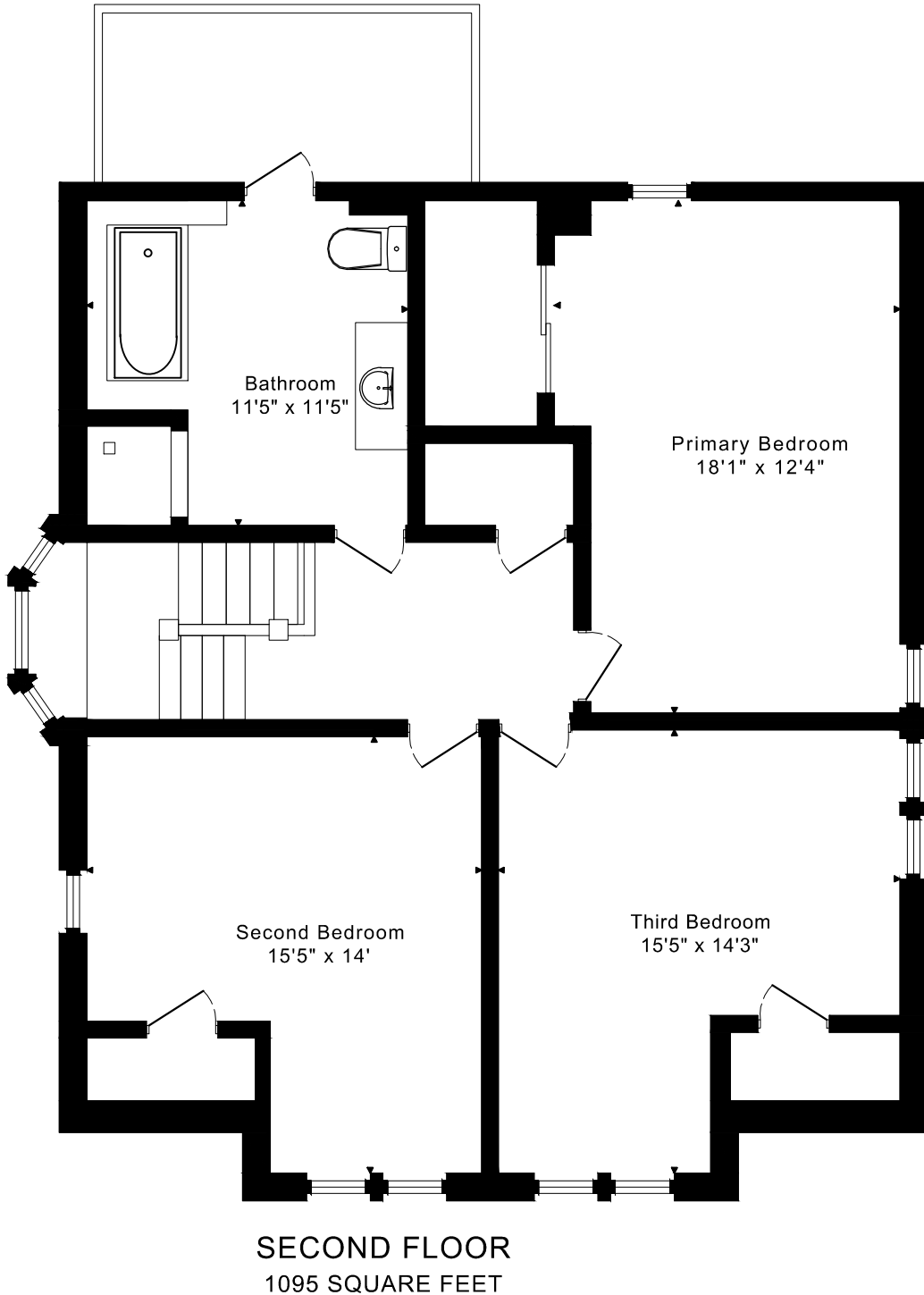
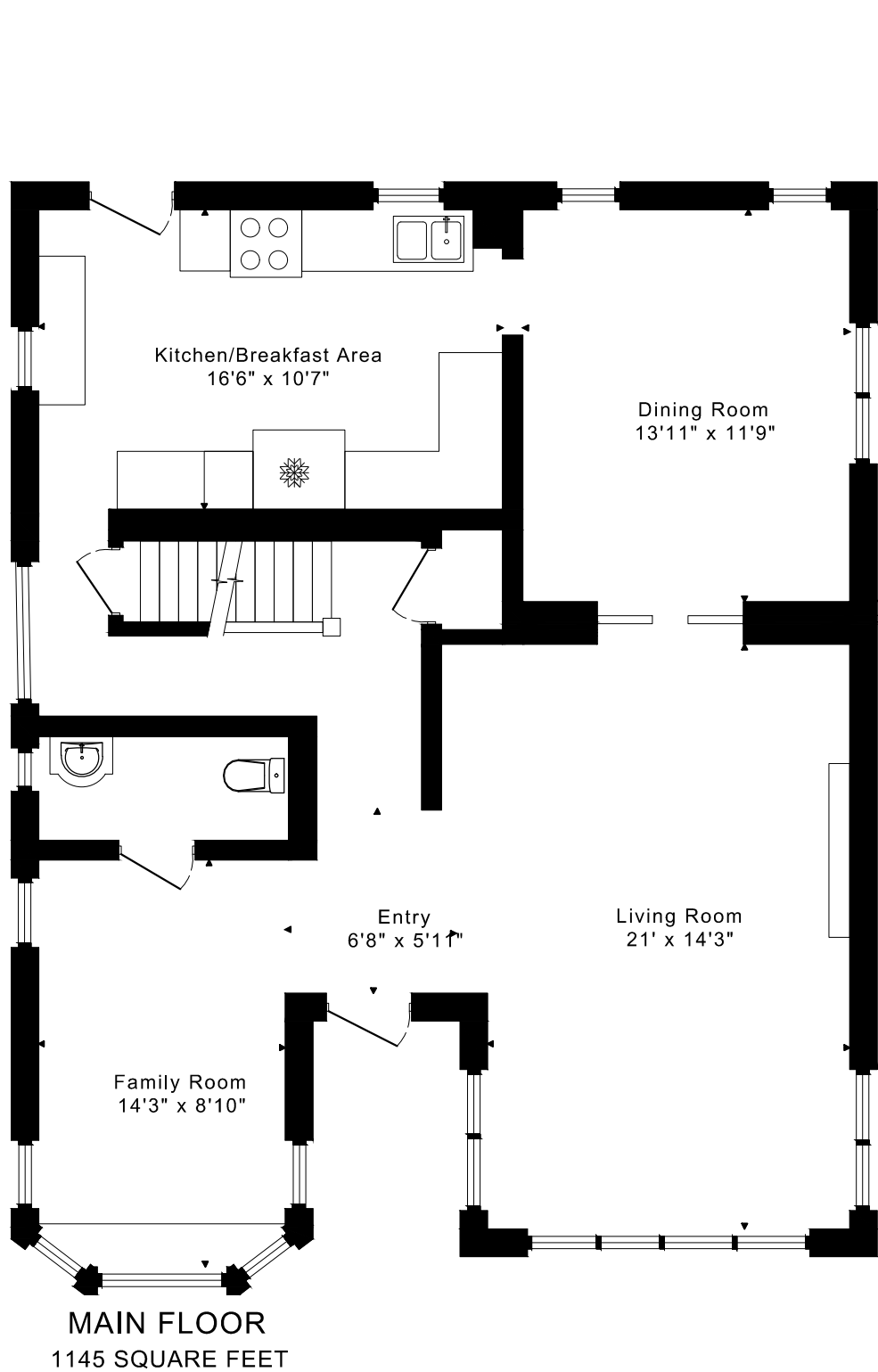


75 MELROSE AVENUE SOUTH
FLOOR PLANS

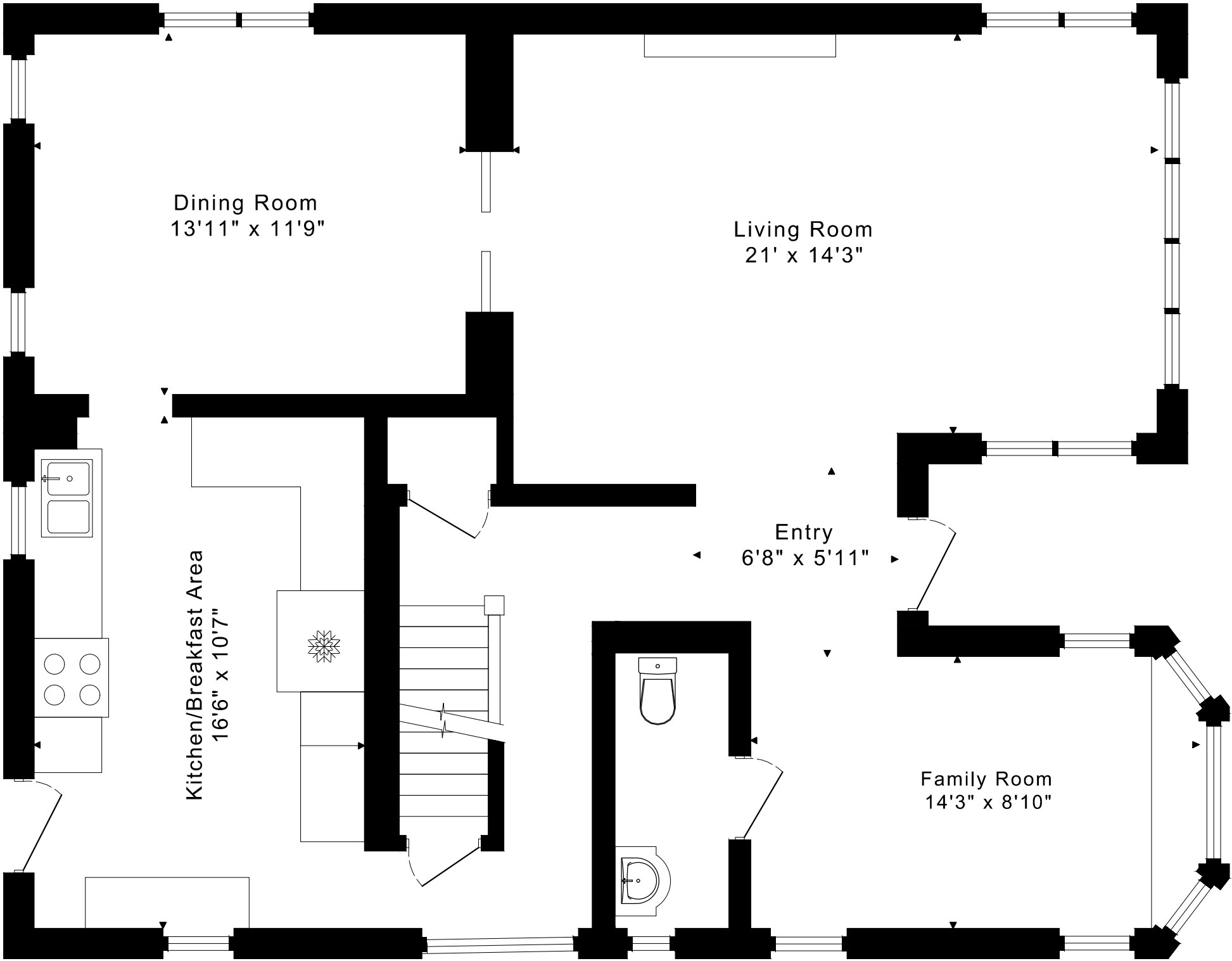


2240 sq ft + 1170 sq ft
BELOW GRADE

CAPTURED ON: 31 JULY 2025
DIMENSIONS ARE APPROXIMATE AND SHOULD BE CONSIDERED
ILLUSTRATIVE ONLY.

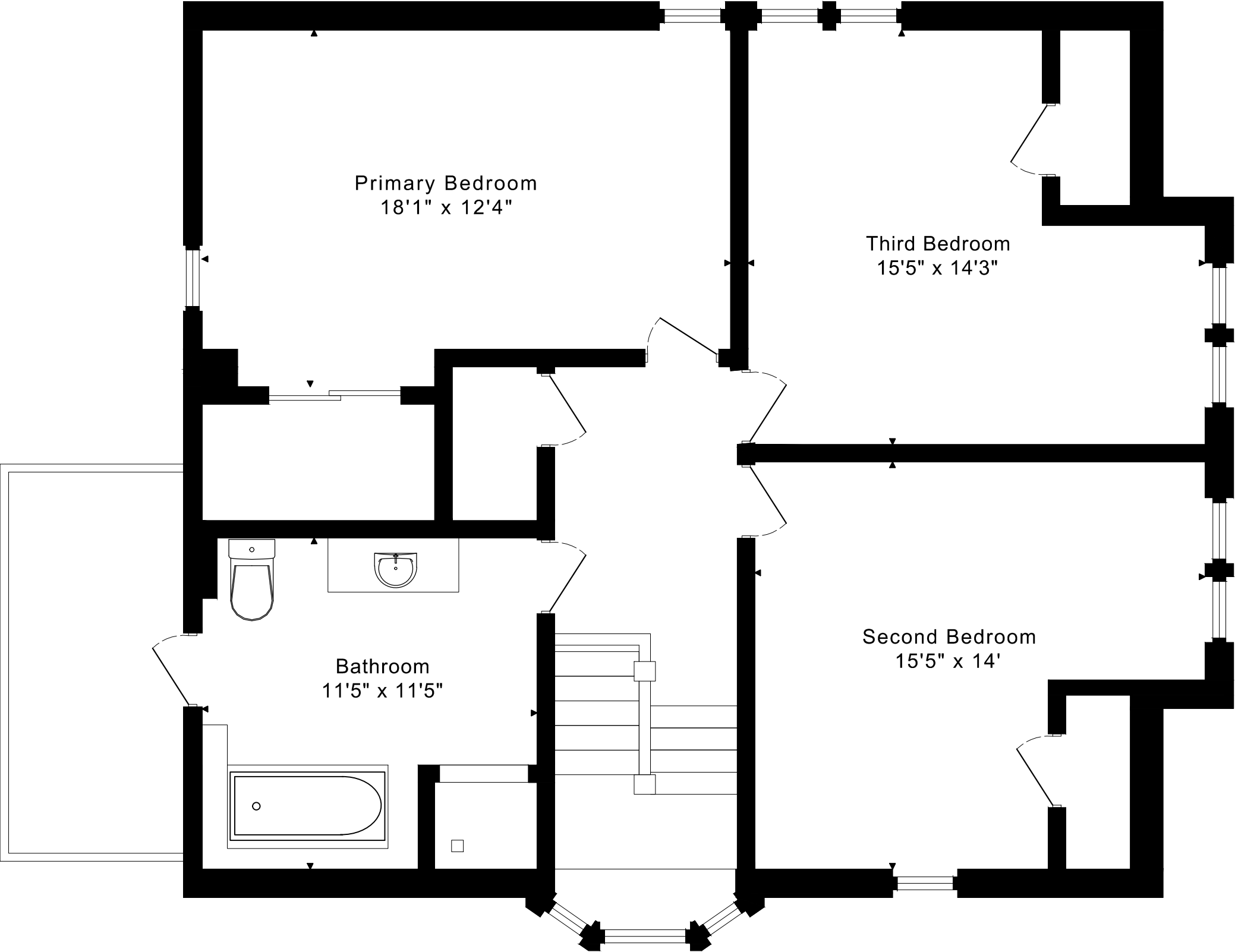
75 MELROSE AVENUE SOUTH
FLOOR PLANS

MAIN FLOOR 1145 SQUARE FEET



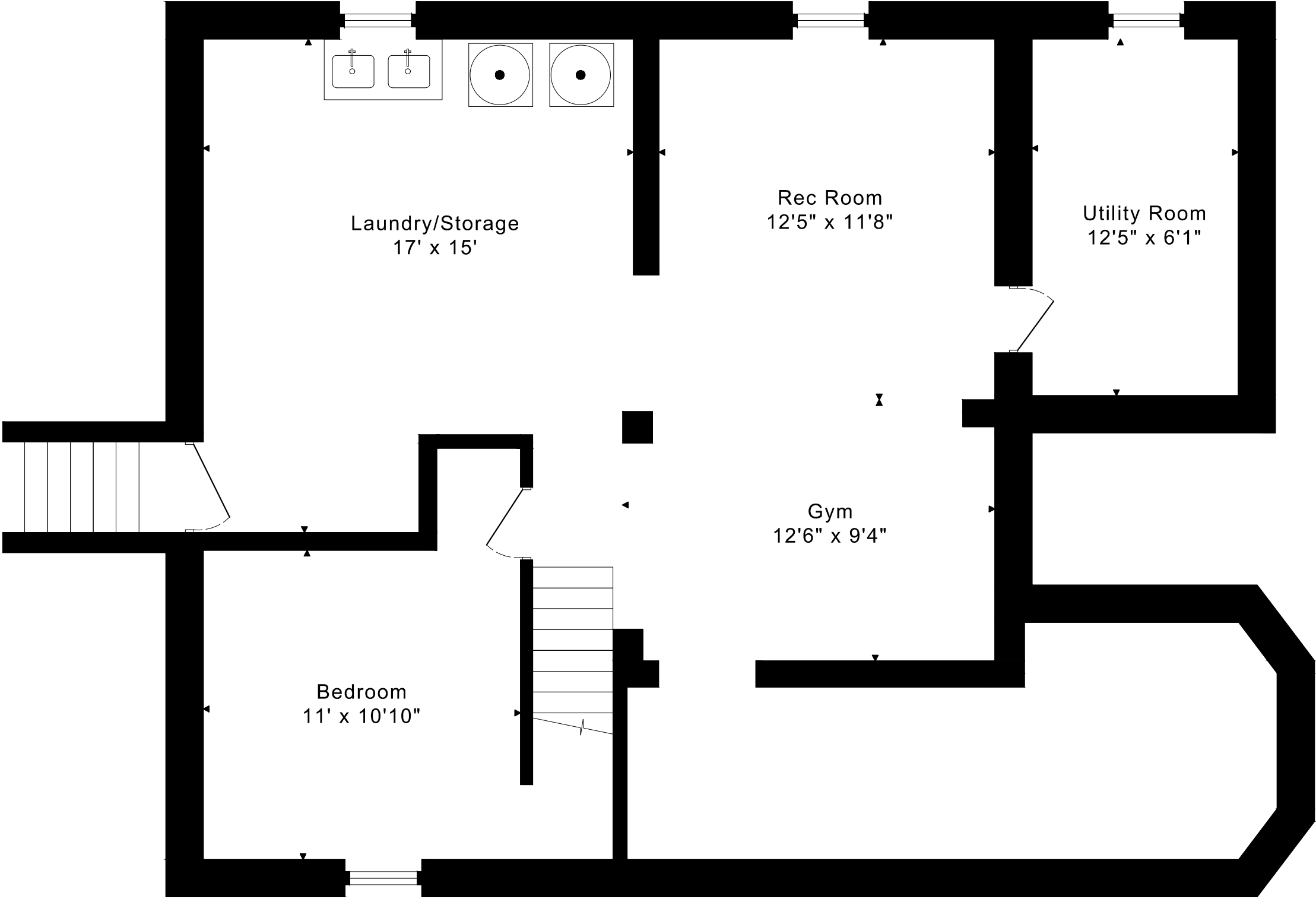
75 MELROSE AVENUE SOUTH
FLOOR PLANS

SECOND FLOOR 1095 SQUARE FEET



75 MELROSE AVENUE SOUTH
FLOOR PLANS

LOWER FLOOR 1170 SQUARE FEET



The following is a disclaimer regarding the approximate nature of dimensions and floor areas listed in this document:

Disclaimer:

The dimensions and floor areas listed in this document are provided as an estimate only and are intended to be used for illustration purposes only. These measurements are not necessarily meant to be a perfect representation of the actual space.

Notes regarding measurement methods and accuracy:

The utilization of laser measurement technology during the 3D model capturing process at the location provides an accurate representation of floor plans, with a typical margin of error of 3-5%. For the most accurate and official measurement data, it is advised to consult official documents such as MPAC records, builder's pre-construction plans, or data from certified measurement companies.

Exterior wall thickness is included in the calculation of the overall square footage and is considered as a component of the footprint. The wall thickness measurement is obtained onsite whenever possible, or estimated in the event where obtaining onsite measurements is not possible, such as in the case of condominium buildings where wall thickness may vary throughout the building.