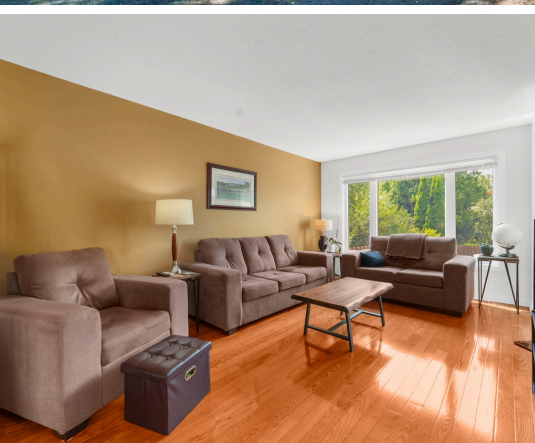




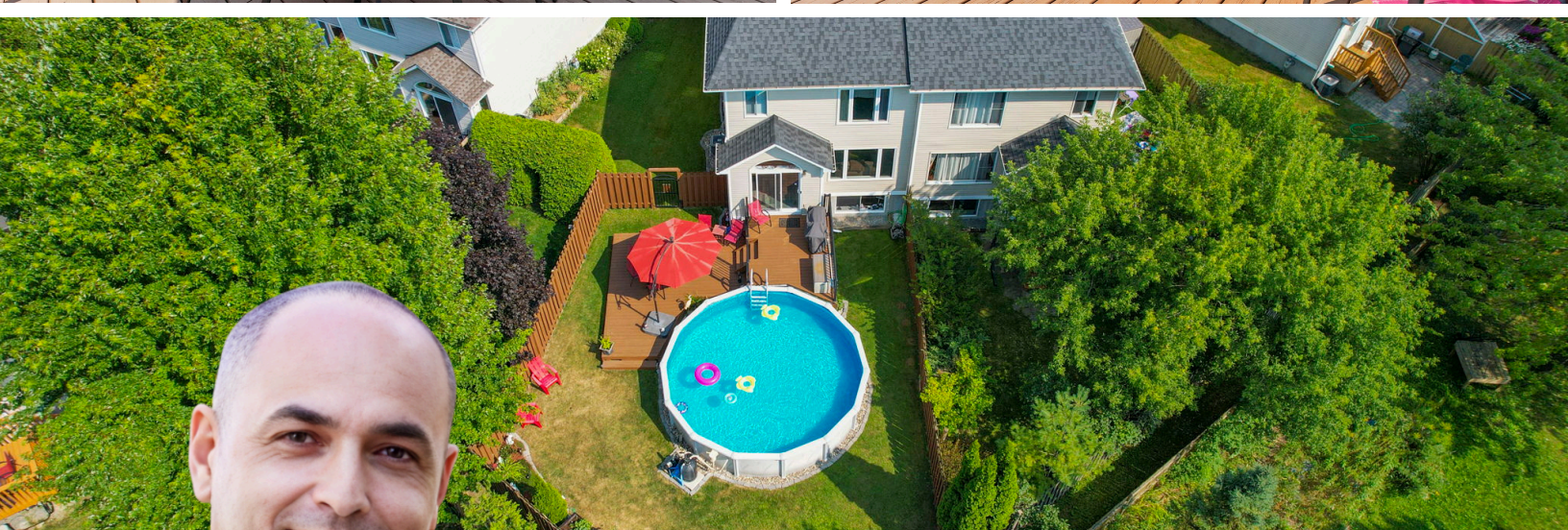
## PRIME LOCATION

14 MCPEAKE PL IS IN A QUIET OTTAWA NEIGHBORHOOD, CLOSE TO SCHOOLS, PARKS, AND SHOPPING. EASY ACCESS TO DOWNTOWN AND TRANSIT MAKES IT IDEAL FOR COMFORTABLE LIVING.

14 MCPEAKE PL  
OTTAWA







**Georges Aoun**

DETAILS REALTY INC

613-794-4944

[soldbygeorges@gmail.com](mailto:soldbygeorges@gmail.com)



**HOME TOUR  
SCAN ME**