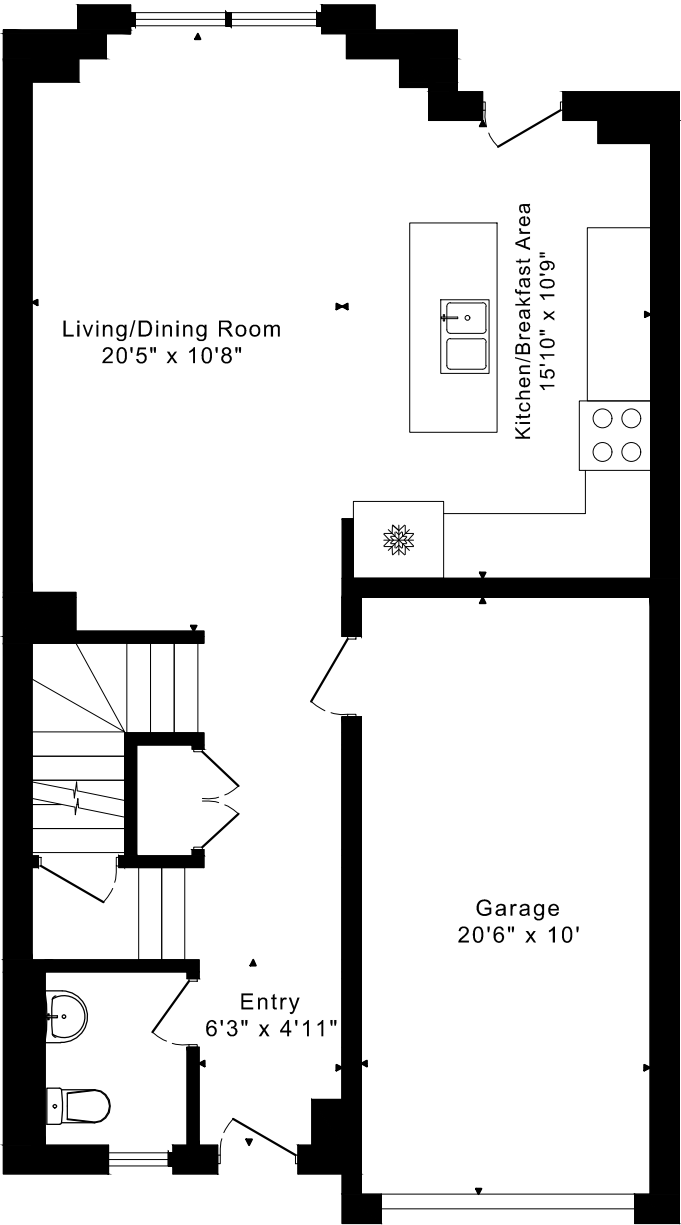
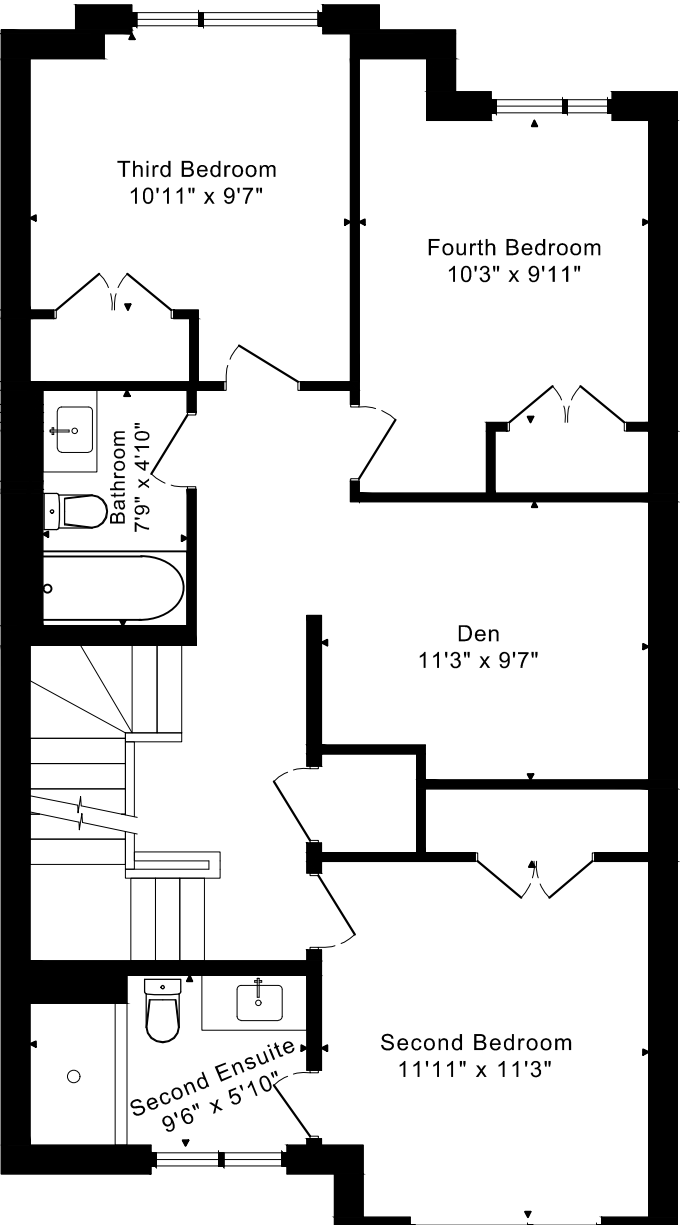


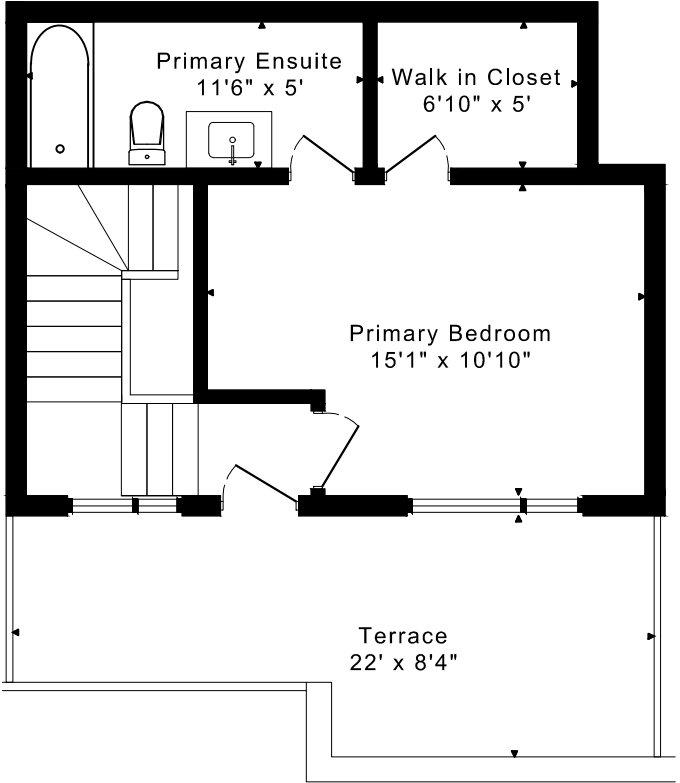
26 KLEIN WAY  
FLOOR PLANS



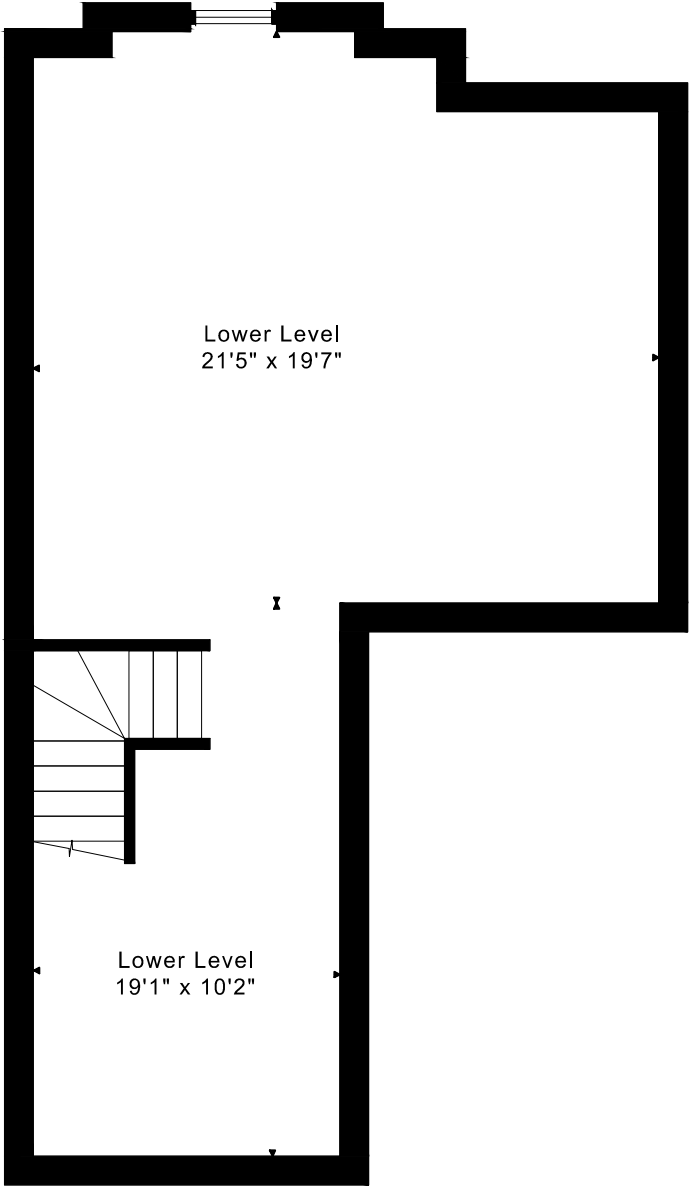
MAIN FLOOR  
680 SQUARE FEET



SECOND FLOOR  
920 SQUARE FEET



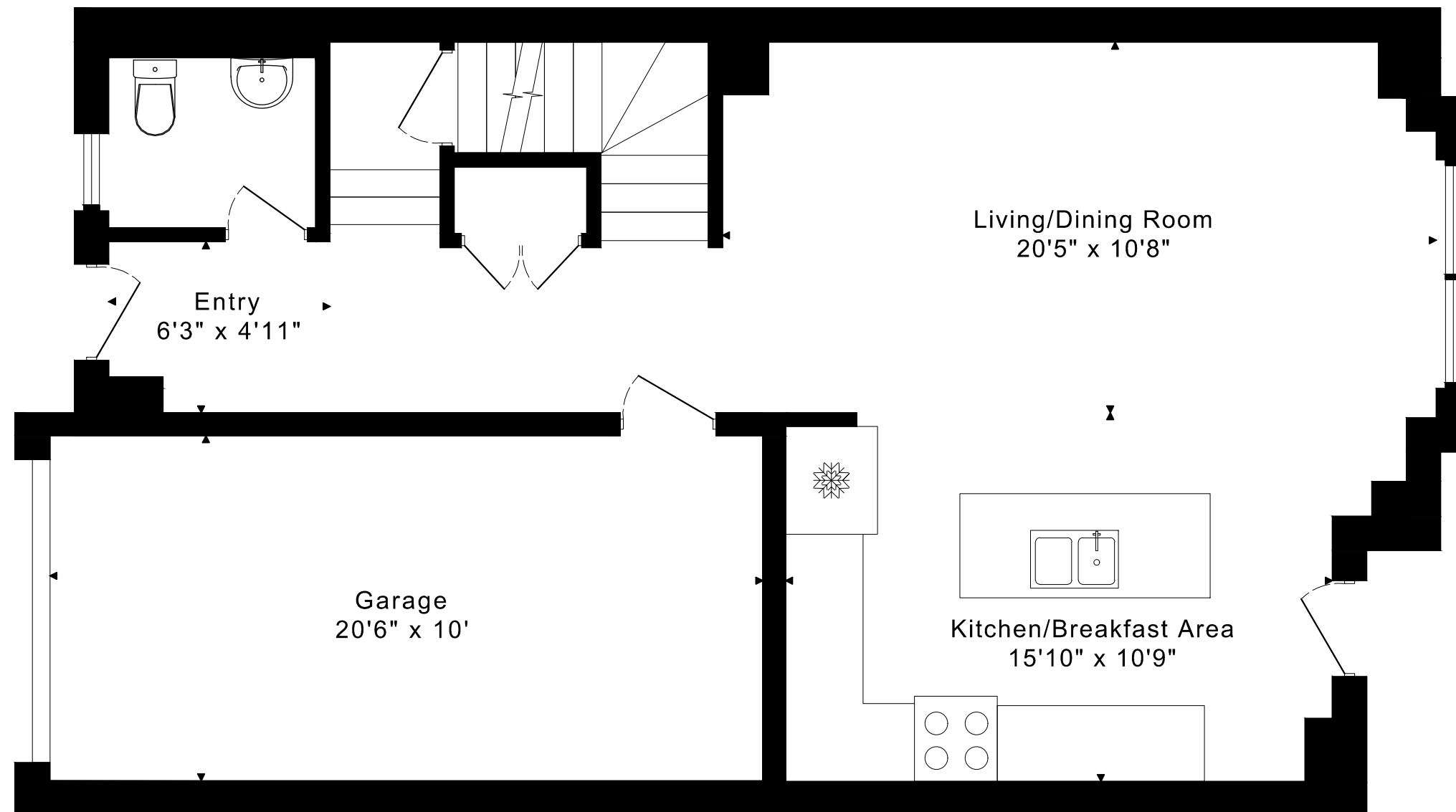
THIRD FLOOR  
380 SQUARE FEET



LOWER FLOOR  
710 SQUARE FEET

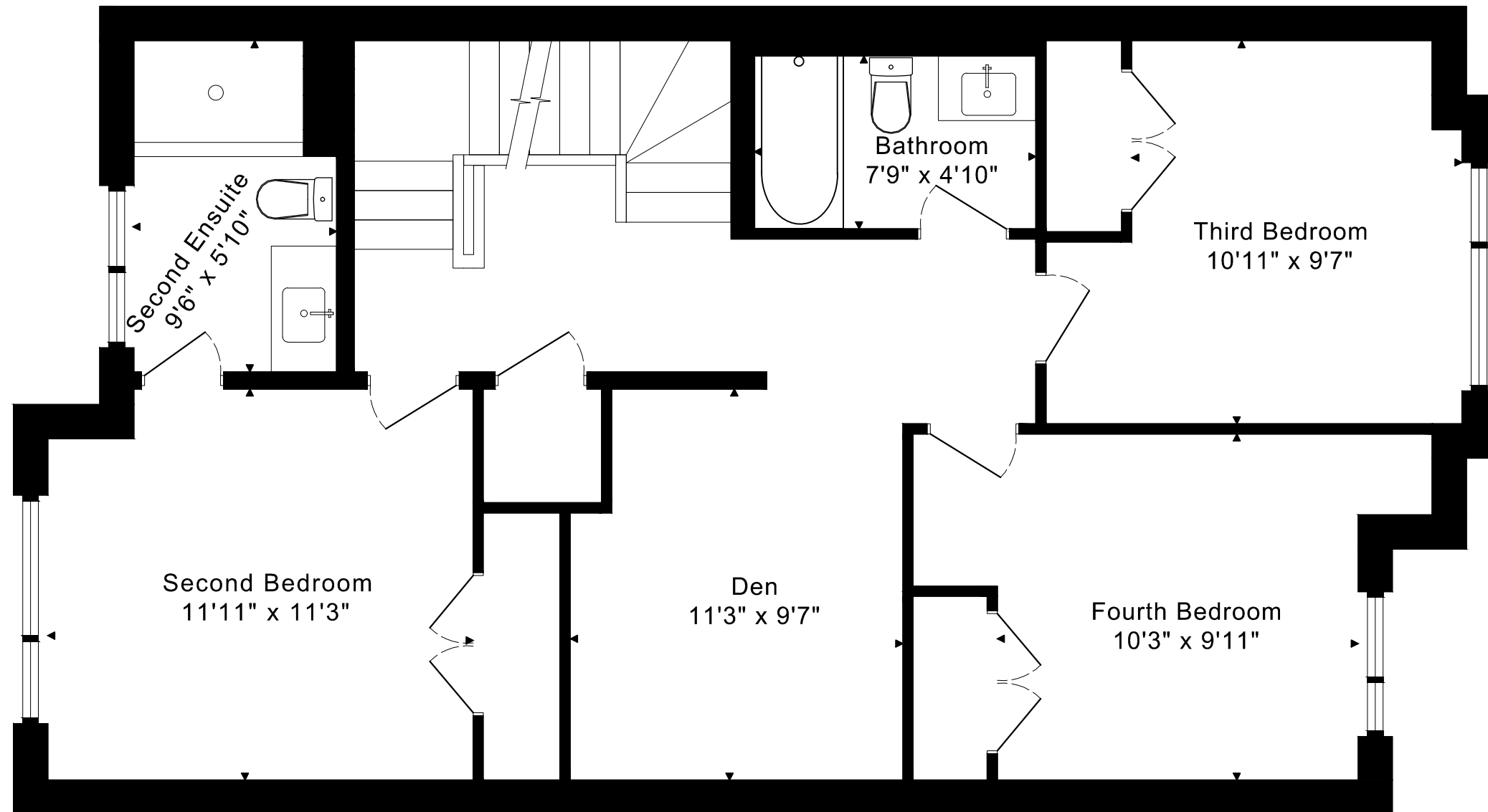
# 26 KLEIN WAY FLOOR PLANS

MAIN FLOOR 745 SQUARE FEET



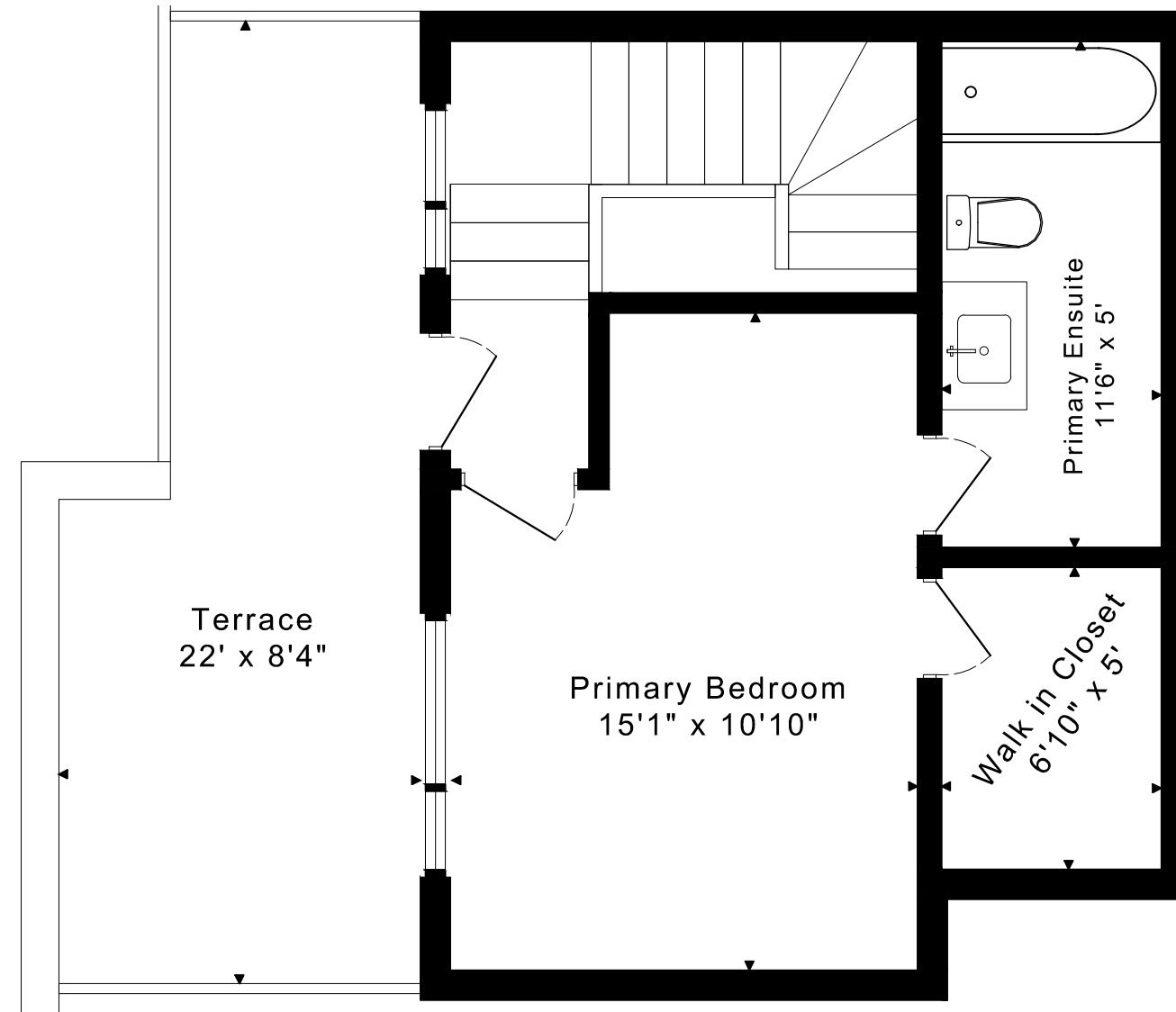
# 26 KLEIN WAY FLOOR PLANS

SECOND FLOOR 920 SQUARE FEET



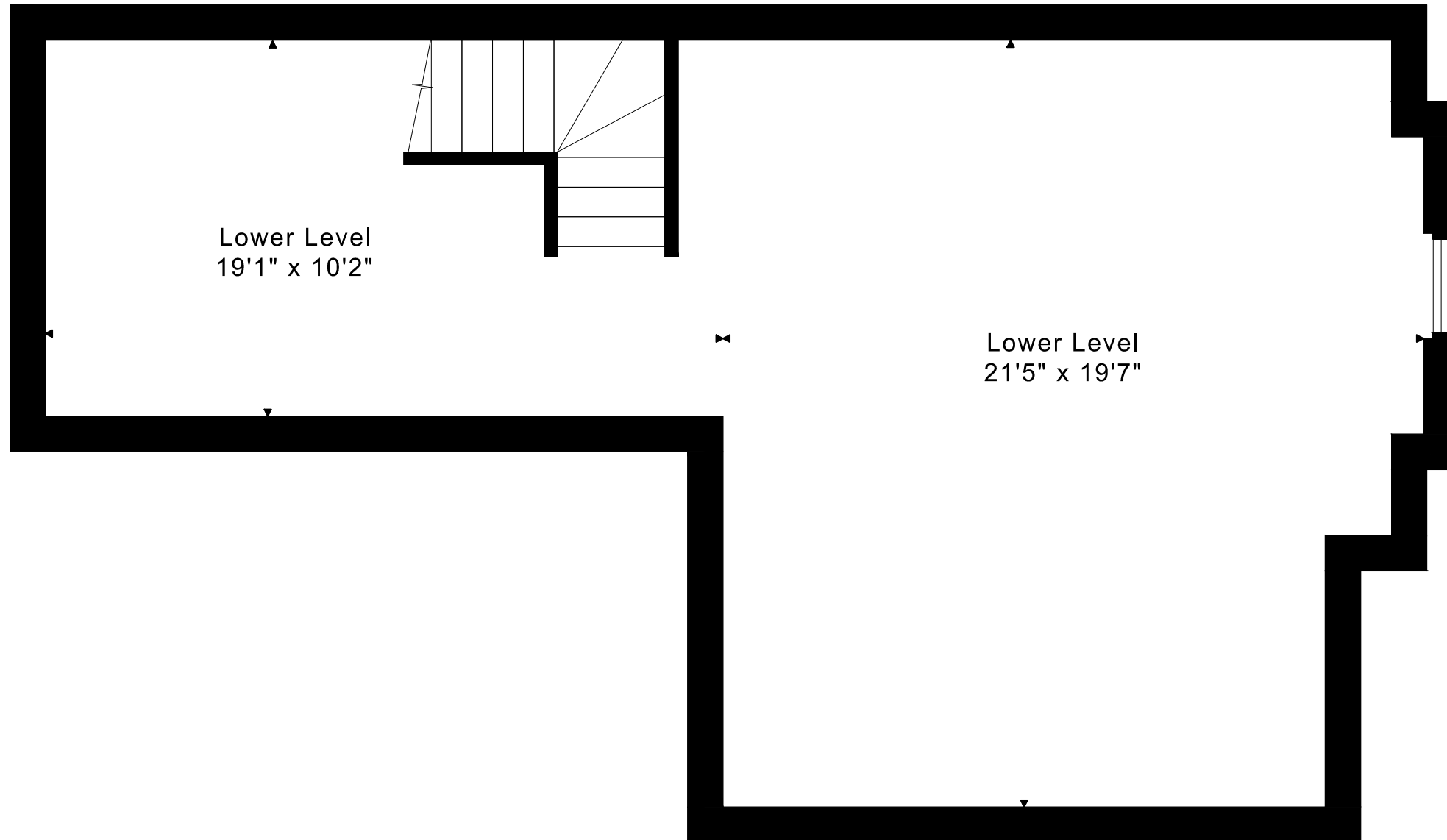
# 26 KLEIN WAY FLOOR PLANS

THIRD FLOOR 380 SQUARE FEET



# 26 KLEIN WAY FLOOR PLANS

LOWER FLOOR 710 SQUARE FEET



26 KLEIN WAY ROOM MEASUREMENTS

Floor	Room	Imperial						Metric [m]		
		Length		Width		Height		Length	Width	Height
		Feet	Inches	Feet	Inches	Feet	Inches			
Third	Primary Bedroom	15	1	10	10	8	1	4,60	3,30	2,46
	Primary Ensuite	11	6	5	0	8	1	3,51	1,52	2,46
	Walk in Closet	6	10	5	0	8	1	2,08	1,52	2,46
	Terrace	22	0	8	4	0	0	6,71	2,54	0,00
Second	Second Bedroom	11	11	11	3	8	1	3,63	3,43	2,46
	Second Ensuite	9	6	5	10	8	1	2,90	1,78	2,46
	Third Bedroom	10	11	9	7	8	1	3,33	2,92	2,46
	Fourth Bedroom	10	3	9	11	8	1	3,12	3,02	2,46
	Den	11	3	9	7	8	1	3,43	2,92	2,46
	Bathroom	7	9	4	10	8	1	2,36	1,47	2,46
Main	Entry	6	3	4	11	9	1	1,91	1,50	2,77
	Living/Dining Room	20	5	10	8	9	1	6,22	3,25	2,77
	Kitchen/Breakfast Area	15	10	10	9	9	1	4,83	3,28	2,77
	Garage	20	6	10	0	9	1	6,25	3,05	2,77
Lower	Lower Level	21	5	19	7	8	2	6,53	5,97	2,49
	Lower Level	19	1	10	2	8	2	5,82	3,10	2,49

The following is a disclaimer regarding the approximate nature of dimensions and floor areas listed in this document:

---

**Disclaimer:**

The dimensions and floor areas listed in this document are provided as an estimate only and are intended to be used for illustration purposes only. These measurements are not necessarily meant to be a perfect representation of the actual space.

**Notes regarding measurement methods and accuracy:**

The utilization of laser measurement technology during the 3D model capturing process at the location provides an accurate representation of floor plans, with a typical margin of error of 3-5%. For the most accurate and official measurement data, it is advised to consult official documents such as MPAC records, builder's pre-construction plans, or data from certified measurement companies.

Exterior wall thickness is included in the calculation of the overall square footage and is considered as a component of the footprint. The wall thickness measurement is obtained onsite whenever possible, or estimated in the event where obtaining onsite measurements is not possible, such as in the case of condominium buildings where wall thickness may vary throughout the building.