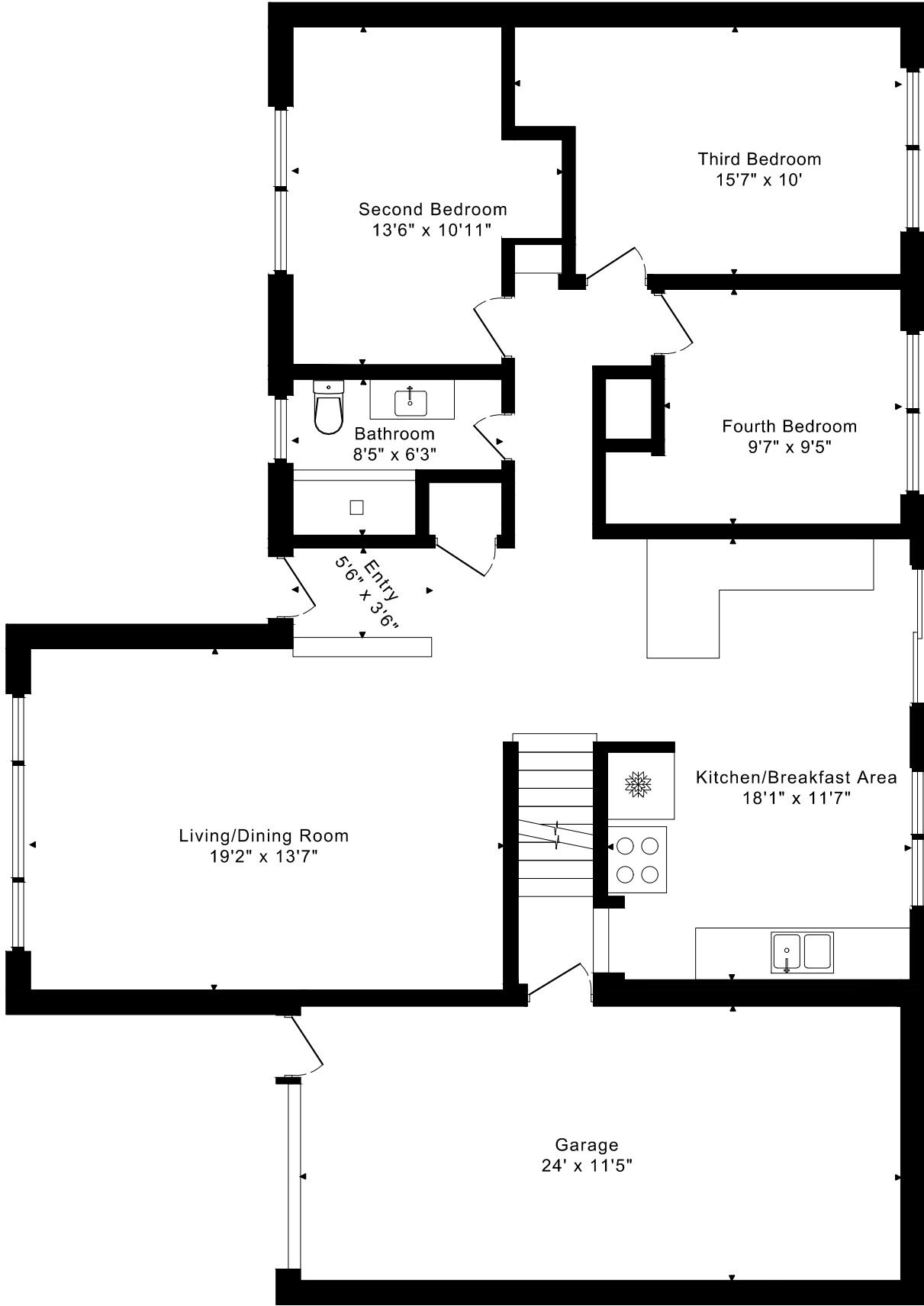
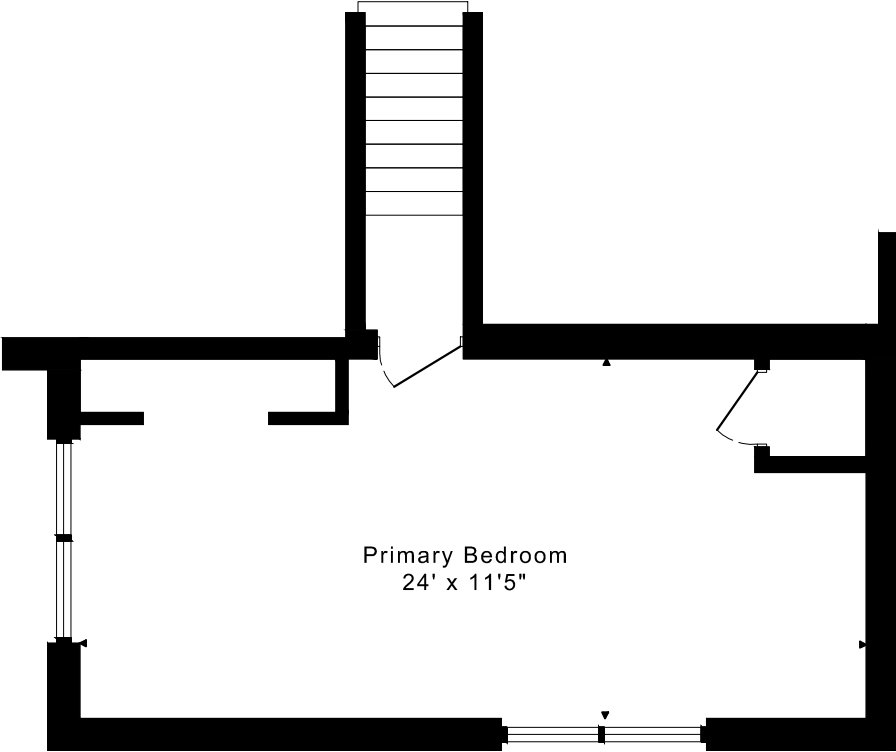


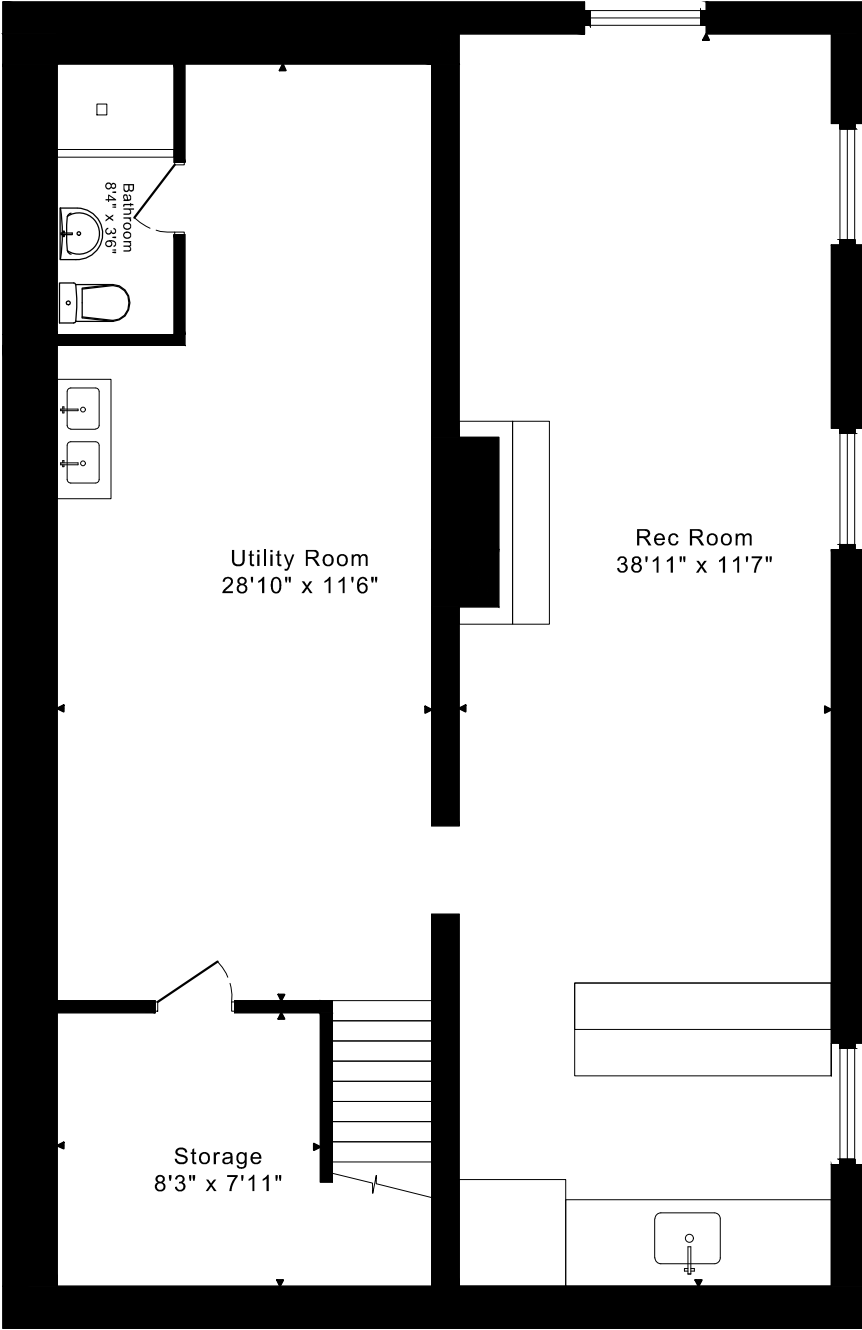
35 VISTA CRESCENT
FLOOR PLANS



MAIN FLOOR
1230 SQUARE FEET



SECOND FLOOR
340 SQUARE FEET

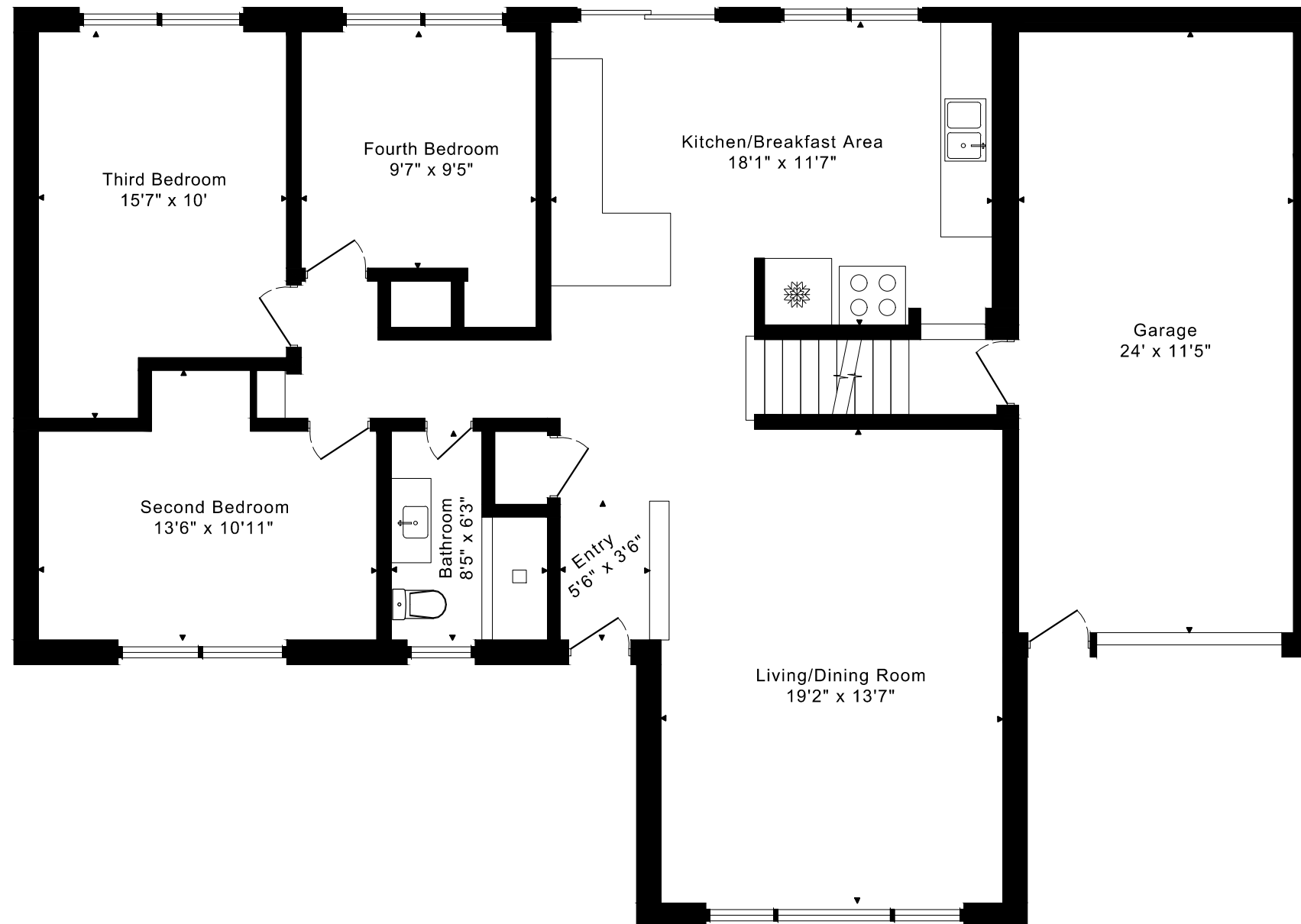


LOWER FLOOR
1075 SQUARE FEET

1570 sq ft + 1075 sq ft
BELOW GRADE

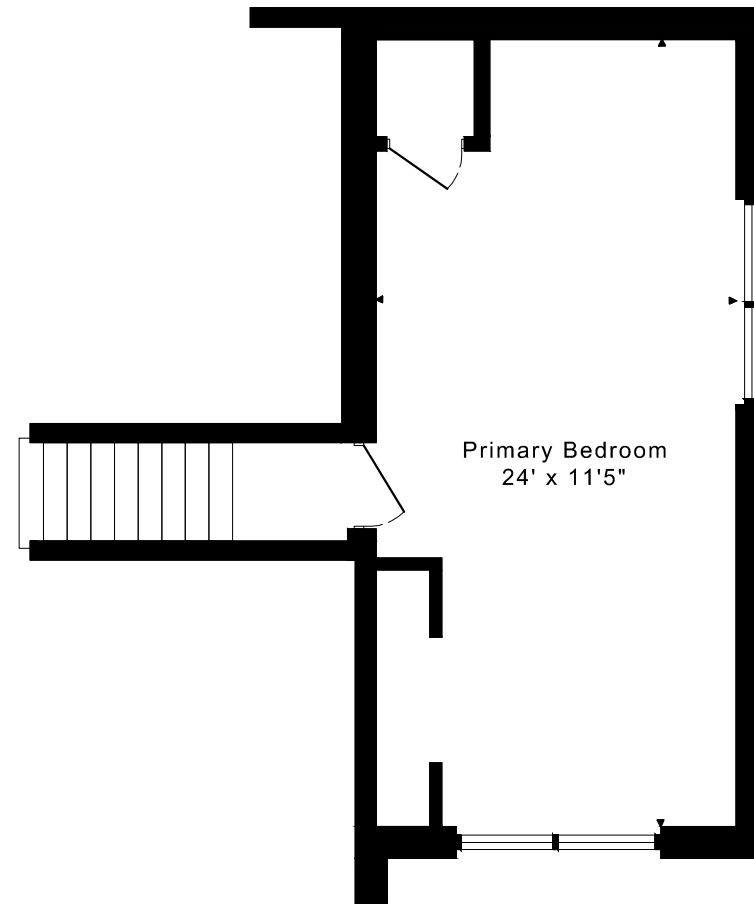
35 VISTA CRESCENT FLOOR PLANS

MAIN FLOOR 1230 SQUARE FEET



35 VISTA CRESCENT FLOOR PLANS

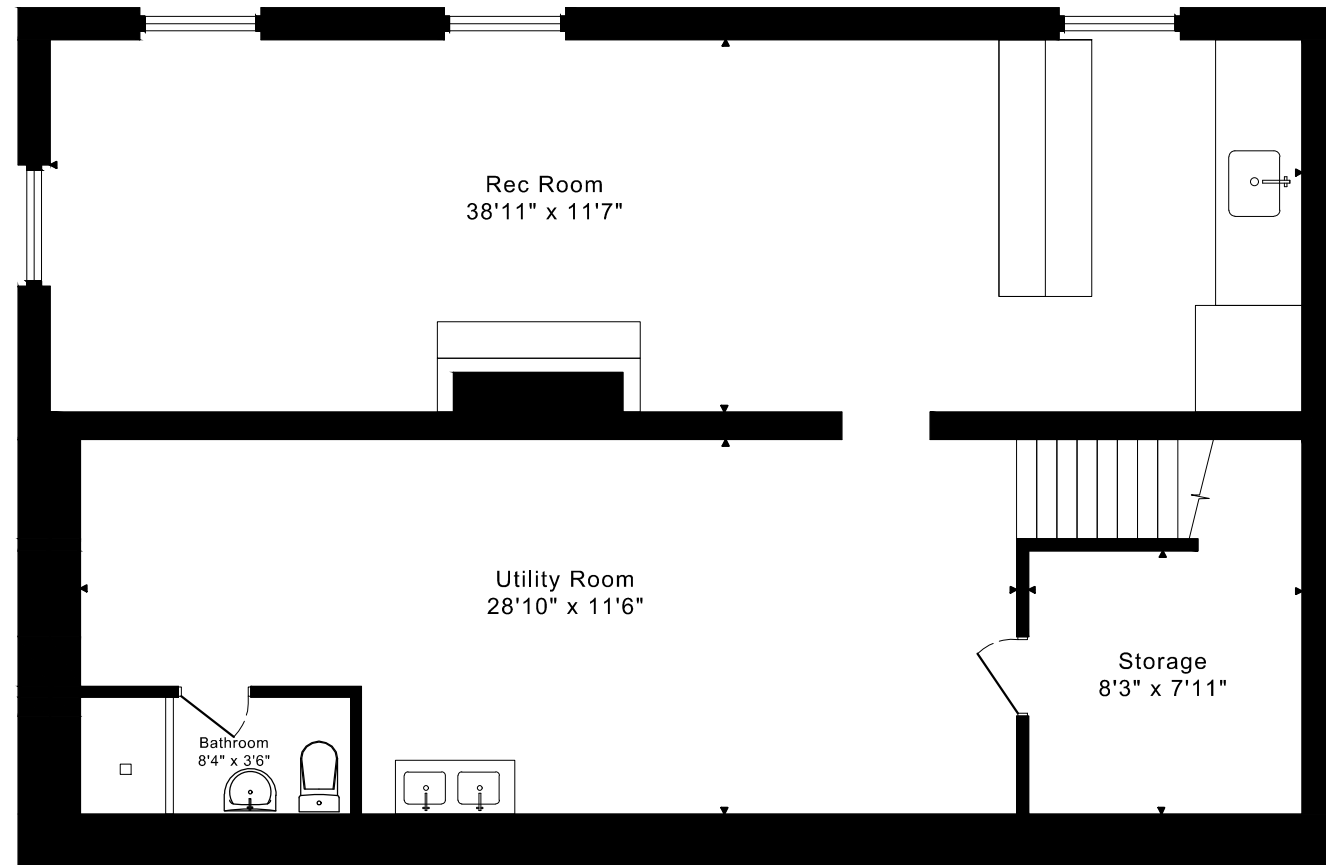
SECOND FLOOR 340 SQUARE FEET



35 VISTA CRESCENT

FLOOR PLANS

LOWER FLOOR 1075 SQUARE FEET



35 VISTA CRESCENT ROOM MEASUREMENTS

Floor	Room	Imperial						Metric [m]		
		Length		Width		Height		Length	Width	Height
		Feet	Inches	Feet	Inches	Feet	Inches			
Second	Primary Bedroom	24	0	11	5	6	11	7,32	3,48	2,11
Main	Entry	5	6	3	6	8	2	1,68	1,07	2,49
	Living/Dining Room	19	2	13	7	8	2	5,84	4,14	2,49
	Kitchen/Breakfast Area	18	1	11	7	8	2	5,51	3,53	2,49
	Second Bedroom	13	6	10	11	8	2	4,11	3,33	2,49
	Third Bedroom	15	7	10	0	8	2	4,75	3,05	2,49
	Fourth Bedroom	9	7	9	5	8	2	2,92	2,87	2,49
	Bathroom	8	5	6	3	8	2	2,57	1,91	2,49
	Garage	24	0	11	5	8	2	7,32	3,48	2,49
Lower	Rec Room	38	11	11	7	6	11	11,86	3,53	2,11
	Utility Room	28	10	11	6	6	9	8,79	3,51	2,06
	Storage	8	3	7	11	6	9	2,51	2,41	2,06
	Bathroom	19	1	10	2	6	9	5,82	3,10	2,06

CAPTURED ON: 12 AUG 2025
DIMENSIONS ARE APPROXIMATE AND SHOULD BE CONSIDERED
ILLUSTRATIVE ONLY.

1570 sq ft + 1075 sq ft
BELOW GRADE

The following is a disclaimer regarding the approximate nature of dimensions and floor areas listed in this document:

Disclaimer:

The dimensions and floor areas listed in this document are provided as an estimate only and are intended to be used for illustration purposes only. These measurements are not necessarily meant to be a perfect representation of the actual space.

Notes regarding measurement methods and accuracy:

The utilization of laser measurement technology during the 3D model capturing process at the location provides an accurate representation of floor plans, with a typical margin of error of 3-5%. For the most accurate and official measurement data, it is advised to consult official documents such as MPAC records, builder's pre-construction plans, or data from certified measurement companies.

Exterior wall thickness is included in the calculation of the overall square footage and is considered as a component of the footprint. The wall thickness measurement is obtained onsite whenever possible, or estimated in the event where obtaining onsite measurements is not possible, such as in the case of condominium buildings where wall thickness may vary throughout the building.