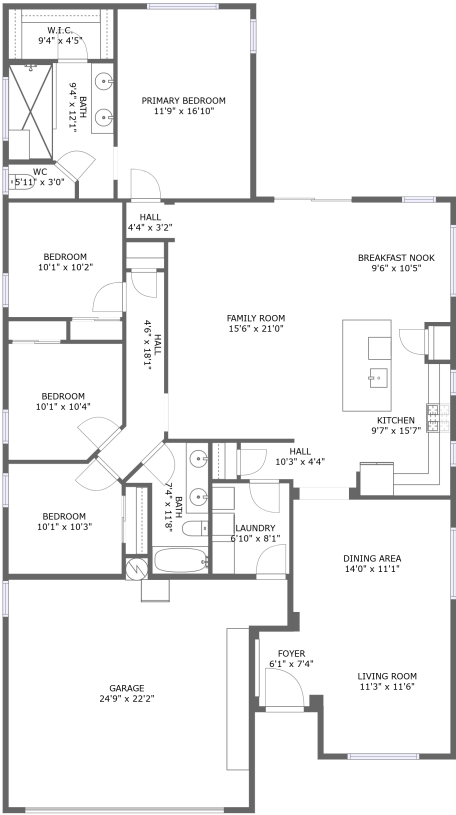


Home report

15161 West Turney Avenue, Palm Valley, Goodyear, Maricopa County, Arizona, United States, 85395



FLOOR 1

Total Area: 1894 sq. ft

Floor 1: 1894 sq. ft

Excluded: Garage 450 sq. ft, Walls: 134 sq. ft

Property summary



1 Floors



4 Bedrooms



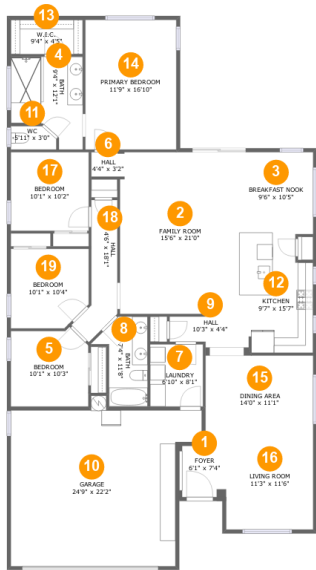
2 Bathrooms



1 Garages

Home report

15161 West Turney Avenue, Palm Valley, Goodyear, Maricopa County, Arizona, United States, 85395



Room dimensions

Floor 1 Total:1894sqft Excluded: 450sqft

#		Max Dimensions	sqft	Included
1	Foyer	6'1" x 7'4"	42 sq. ft	Yes
2	Family Room	15'6" x 21'0"	324 sq. ft	Yes
3	Breakfast Nook	9'6" x 10'5"	100 sq. ft	Yes
4	Bath	9'4" x 12'1"	93 sq. ft	Yes
5	Bedroom	10'1" x 10'3"	97 sq. ft	Yes
6	Hall	4'4" x 3'2"	14 sq. ft	Yes
7	Laundry	6'10" x 8'1"	55 sq. ft	Yes
8	Bath	7'4" x 11'8"	60 sq. ft	Yes
9	Hall	10'3" x 4'4"	40 sq. ft	Yes
10	Garage	24'9" x 22'2"	450 sq. ft	No
11	WC	5'11" x 3'0"	16 sq. ft	Yes

Home report

15161 West Turney Avenue, Palm Valley, Goodyear, Maricopa County, Arizona, United States, 85395

#		Max Dimensions	sqft	Included
12	Kitchen	9'7" x 15'7"	134 sq. ft	Yes
13	W.I.C.	9'4" x 4'5"	41 sq. ft	Yes
14	Primary Bedroom	11'9" x 16'10"	199 sq. ft	Yes
15	Dining Area	14'0" x 11'1"	154 sq. ft	Yes
16	Living Room	11'3" x 11'6"	130 sq. ft	Yes
17	Bedroom	10'1" x 10'2"	103 sq. ft	Yes
18	Hall	4'6" x 18'1"	62 sq. ft	Yes
19	Bedroom	10'1" x 10'4"	99 sq. ft	Yes

15161 West Turney Avenue, Palm Valley, Goodyear, Maricopa County, Arizona, United States, 85395

1 Floor 1 - Foyer



Max Dimensions: 6'1" x 7'4"
Calculated Area: 42 sq. ft
Included: Yes

Heated: Yes
Finished: Yes
Enclosed: Yes
Contiguous: Yes
Permitted: Yes
Wet space: No
Addition: No
Conversion: No

2 Floor 1 - Family Room



Max Dimensions: 15'6" x 21'0"
Calculated Area: 324 sq. ft
Included: Yes

Heated: Yes
Finished: Yes
Enclosed: Yes
Contiguous: Yes
Permitted: Yes
Wet space: No
Addition: No
Conversion: No

15161 West Turney Avenue, Palm Valley, Goodyear, Maricopa County, Arizona, United States, 85395

3 Floor 1 - Breakfast Nook



Max Dimensions: 9'6" x 10'5"
Calculated Area: 100 sq. ft
Included: Yes

Heated: Yes
Finished: Yes
Enclosed: Yes
Contiguous: Yes
Permitted: Yes
Wet space: No
Addition: No
Conversion: No

4 Floor 1 - Bath



Max Dimensions: 9'4" x 12'1"
Calculated Area: 93 sq. ft
Included: Yes

Heated: Yes
Finished: Yes
Enclosed: Yes
Contiguous: Yes
Permitted: Yes
Wet space: Yes
Addition: No
Conversion: No

5 Floor 1 - Bedroom



Max Dimensions: 10'1" x 10'3"
Calculated Area: 97 sq. ft
Included: Yes

Heated: Yes
Finished: Yes
Enclosed: Yes
Contiguous: Yes
Permitted: Yes
Wet space: No
Addition: No
Conversion: No

15161 West Turney Avenue, Palm Valley, Goodyear, Maricopa County, Arizona, United States, 85395

6 Floor 1 - Hall



Max Dimensions: 4'4" x 3'2"
Calculated Area: 14 sq. ft
Included: Yes

Heated: Yes
Finished: Yes
Enclosed: Yes
Contiguous: Yes
Permitted: Yes
Wet space: No
Addition: No
Conversion: No

7 Floor 1 - Laundry



Max Dimensions: 6'10" x 8'1"
Calculated Area: 55 sq. ft
Included: Yes

Heated: Yes
Finished: Yes
Enclosed: Yes
Contiguous: Yes
Permitted: Yes
Wet space: No
Addition: No
Conversion: No

8 Floor 1 - Bath



Max Dimensions: 7'4" x 11'8"
Calculated Area: 60 sq. ft
Included: Yes

Heated: Yes
Finished: Yes
Enclosed: Yes
Contiguous: Yes
Permitted: Yes
Wet space: Yes
Addition: No
Conversion: No

15161 West Turney Avenue, Palm Valley, Goodyear, Maricopa County, Arizona, United States, 85395

9 Floor 1 - Hall



Max Dimensions: 10'3" x 4'4"
Calculated Area: 40 sq. ft
Included: Yes

Heated: Yes
Finished: Yes
Enclosed: Yes
Contiguous: Yes
Permitted: Yes
Wet space: No
Addition: No
Conversion: No

10 Floor 1 - Garage



Max Dimensions: 24'9" x 22'2"
Calculated Area: 450 sq. ft
Included: No

Heated: No
Finished: No
Enclosed: Yes
Contiguous: Yes
Permitted: Yes
Wet space: No
Addition: No
Conversion: No

11 Floor 1 - WC



Max Dimensions: 5'11" x 3'0"
Calculated Area: 16 sq. ft
Included: Yes

Heated: Yes
Finished: Yes
Enclosed: Yes
Contiguous: Yes
Permitted: Yes
Wet space: Yes
Addition: No
Conversion: No

15161 West Turney Avenue, Palm Valley, Goodyear, Maricopa County, Arizona, United States, 85395

12 Floor 1 - Kitchen



Max Dimensions: 9'7" x 15'7"
Calculated Area: 134 sq. ft
Included: Yes

Heated: Yes
Finished: Yes
Enclosed: Yes
Contiguous: Yes
Permitted: Yes
Wet space: No
Addition: No
Conversion: No

13 Floor 1 - W.I.C.



Max Dimensions: 9'4" x 4'5"
Calculated Area: 41 sq. ft
Included: Yes

Heated: Yes
Finished: Yes
Enclosed: Yes
Contiguous: Yes
Permitted: Yes
Wet space: No
Addition: No
Conversion: No

14 Floor 1 - Primary Bedroom



Max Dimensions: 11'9" x 16'10"
Calculated Area: 199 sq. ft
Included: Yes

Heated: Yes
Finished: Yes
Enclosed: Yes
Contiguous: Yes
Permitted: Yes
Wet space: No
Addition: No
Conversion: No

15161 West Turney Avenue, Palm Valley, Goodyear, Maricopa County, Arizona, United States, 85395

15 Floor 1 - Dining Area



Max Dimensions: 14'0" x 11'1"
Calculated Area: 154 sq. ft
Included: Yes

Heated: Yes
Finished: Yes
Enclosed: Yes
Contiguous: Yes
Permitted: Yes
Wet space: No
Addition: No
Conversion: No

16 Floor 1 - Living Room



Max Dimensions: 11'3" x 11'6"
Calculated Area: 130 sq. ft
Included: Yes

Heated: Yes
Finished: Yes
Enclosed: Yes
Contiguous: Yes
Permitted: Yes
Wet space: No
Addition: No
Conversion: No

17 Floor 1 - Bedroom



Max Dimensions: 10'1" x 10'2"
Calculated Area: 103 sq. ft
Included: Yes

Heated: Yes
Finished: Yes
Enclosed: Yes
Contiguous: Yes
Permitted: Yes
Wet space: No
Addition: No
Conversion: No

15161 West Turney Avenue, Palm Valley, Goodyear, Maricopa County, Arizona, United States, 85395

18 Floor 1 - Hall



Max Dimensions: 4'6" x 18'1"
Calculated Area: 62 sq. ft
Included: Yes

Heated: Yes
Finished: Yes
Enclosed: Yes
Contiguous: Yes
Permitted: Yes
Wet space: No
Addition: No
Conversion: No

19 Floor 1 - Bedroom



Max Dimensions: 10'1" x 10'4"
Calculated Area: 99 sq. ft
Included: Yes

Heated: Yes
Finished: Yes
Enclosed: Yes
Contiguous: Yes
Permitted: Yes
Wet space: No
Addition: No
Conversion: No