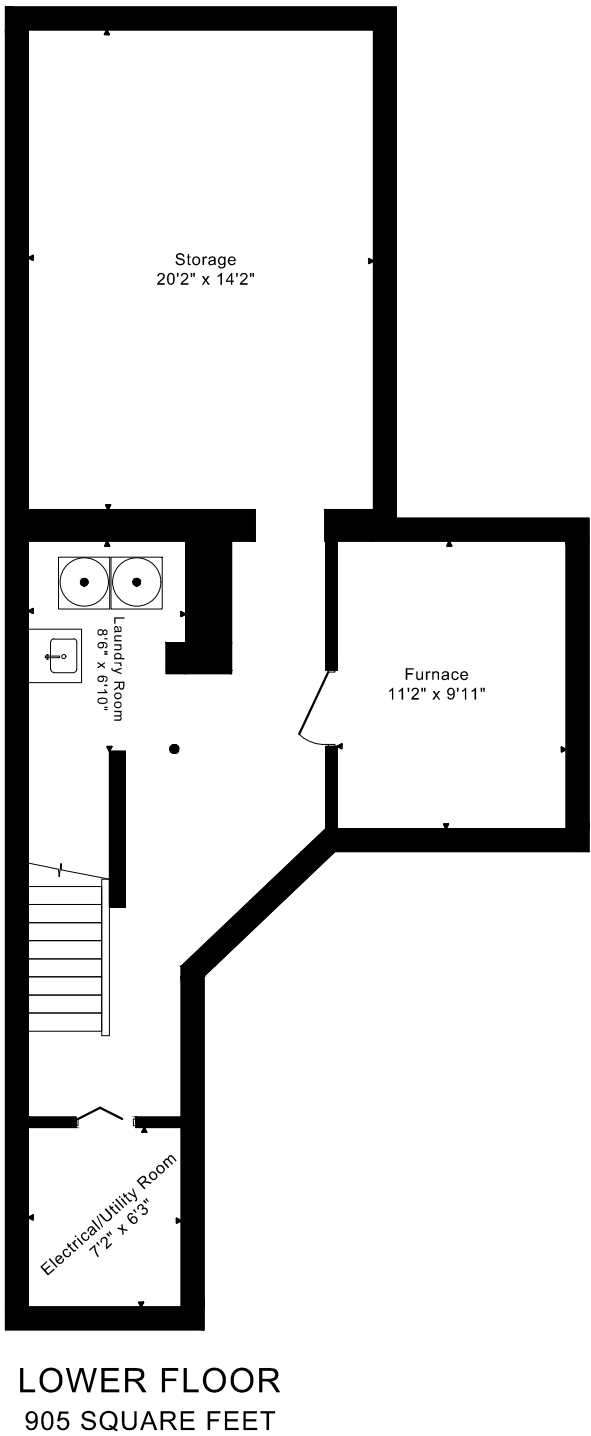
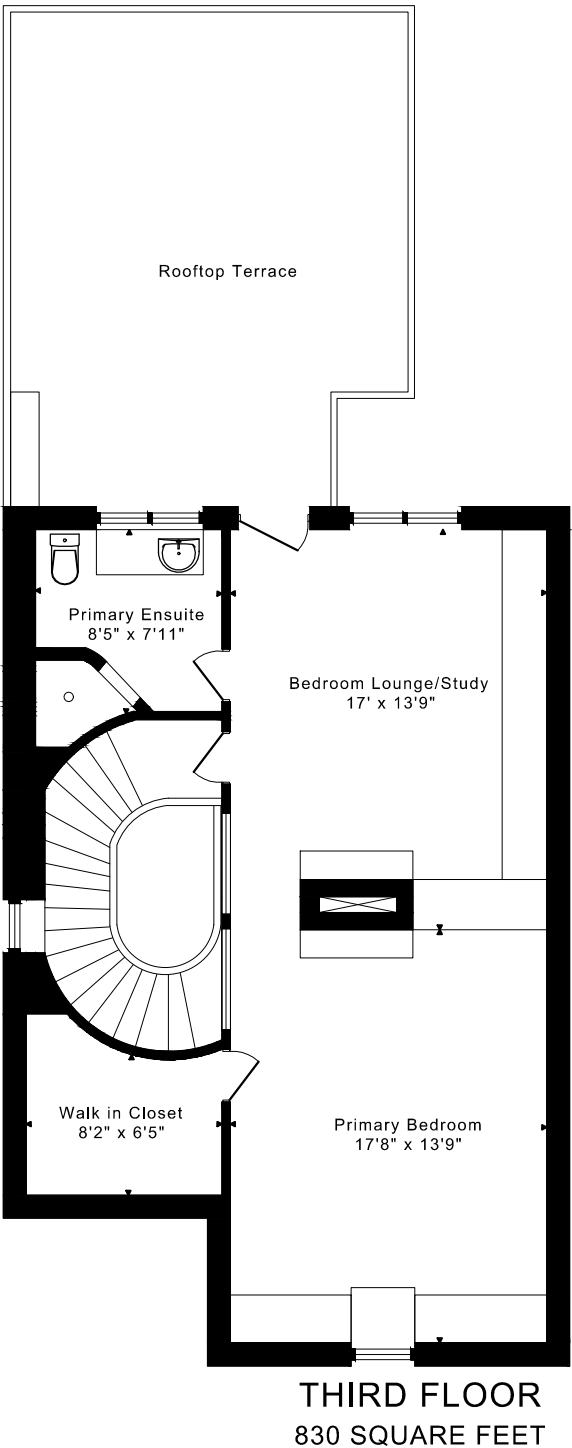
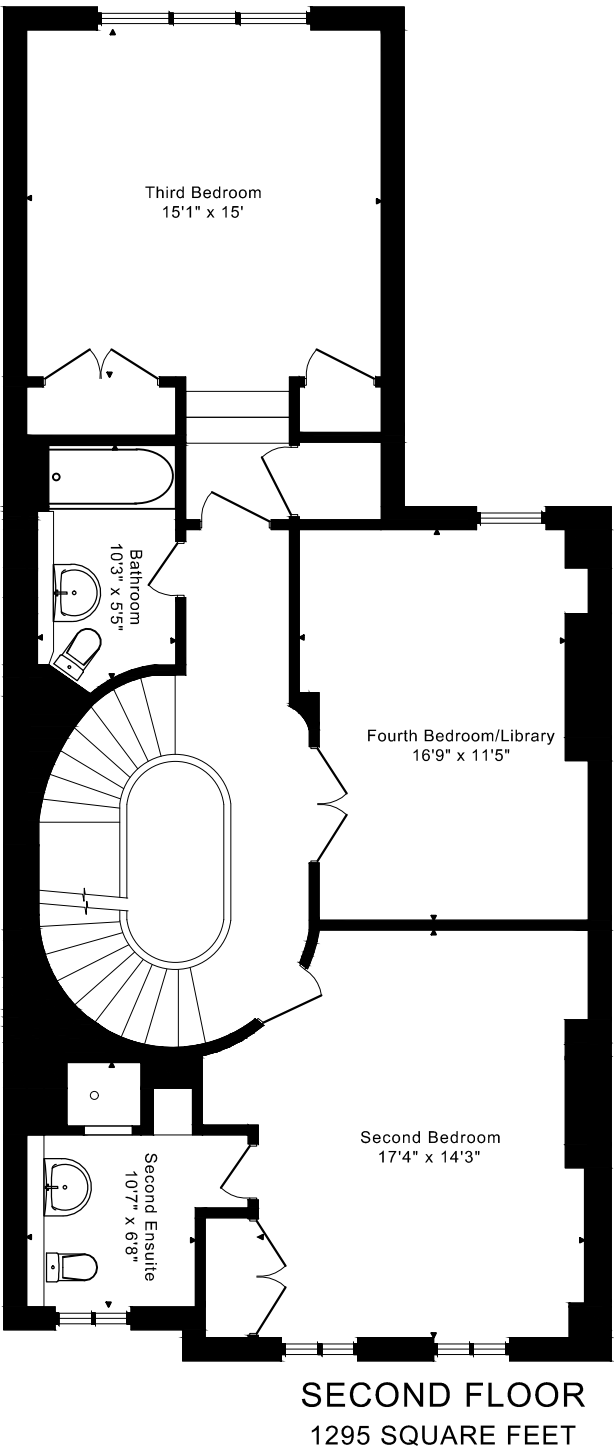
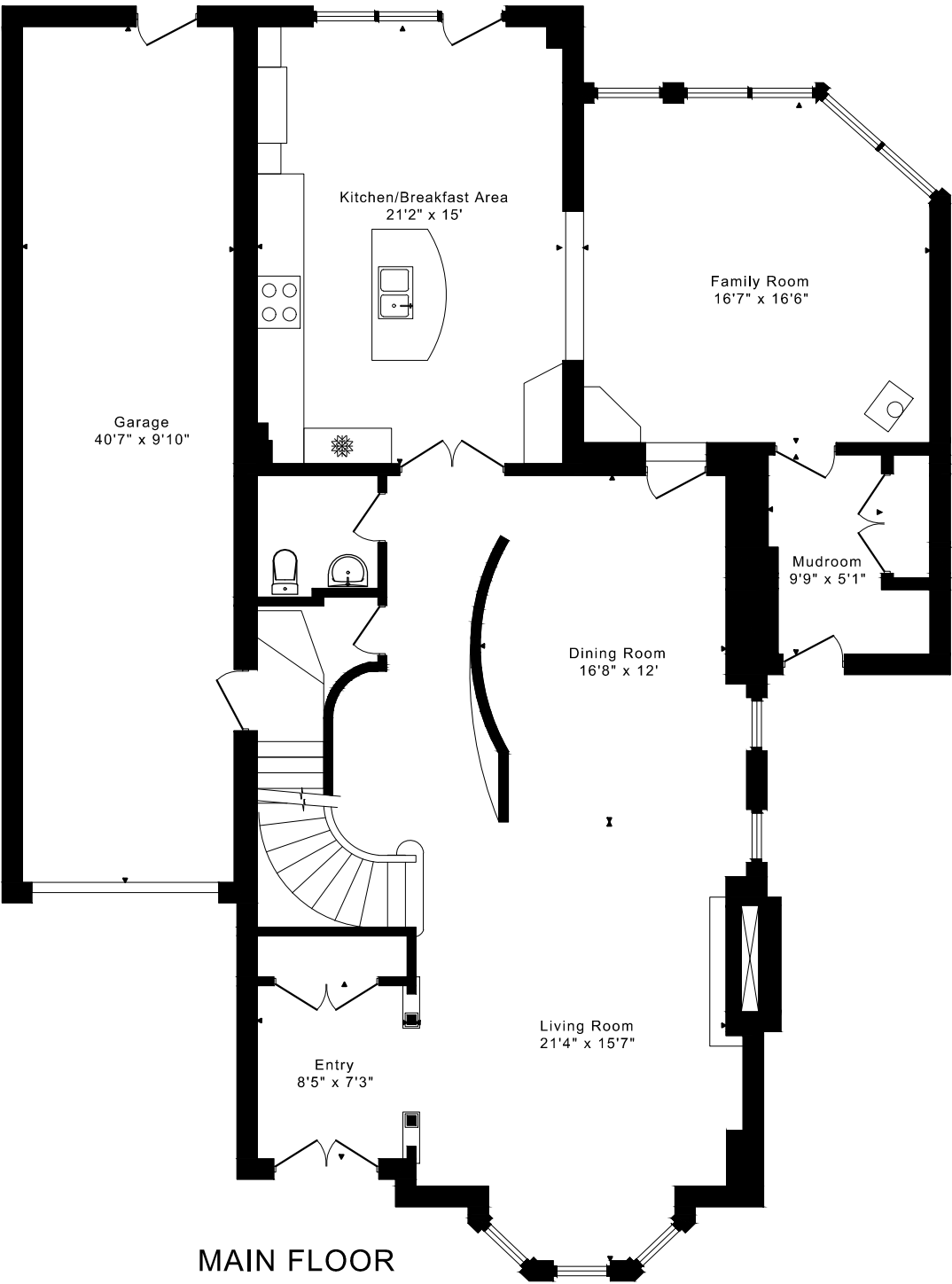


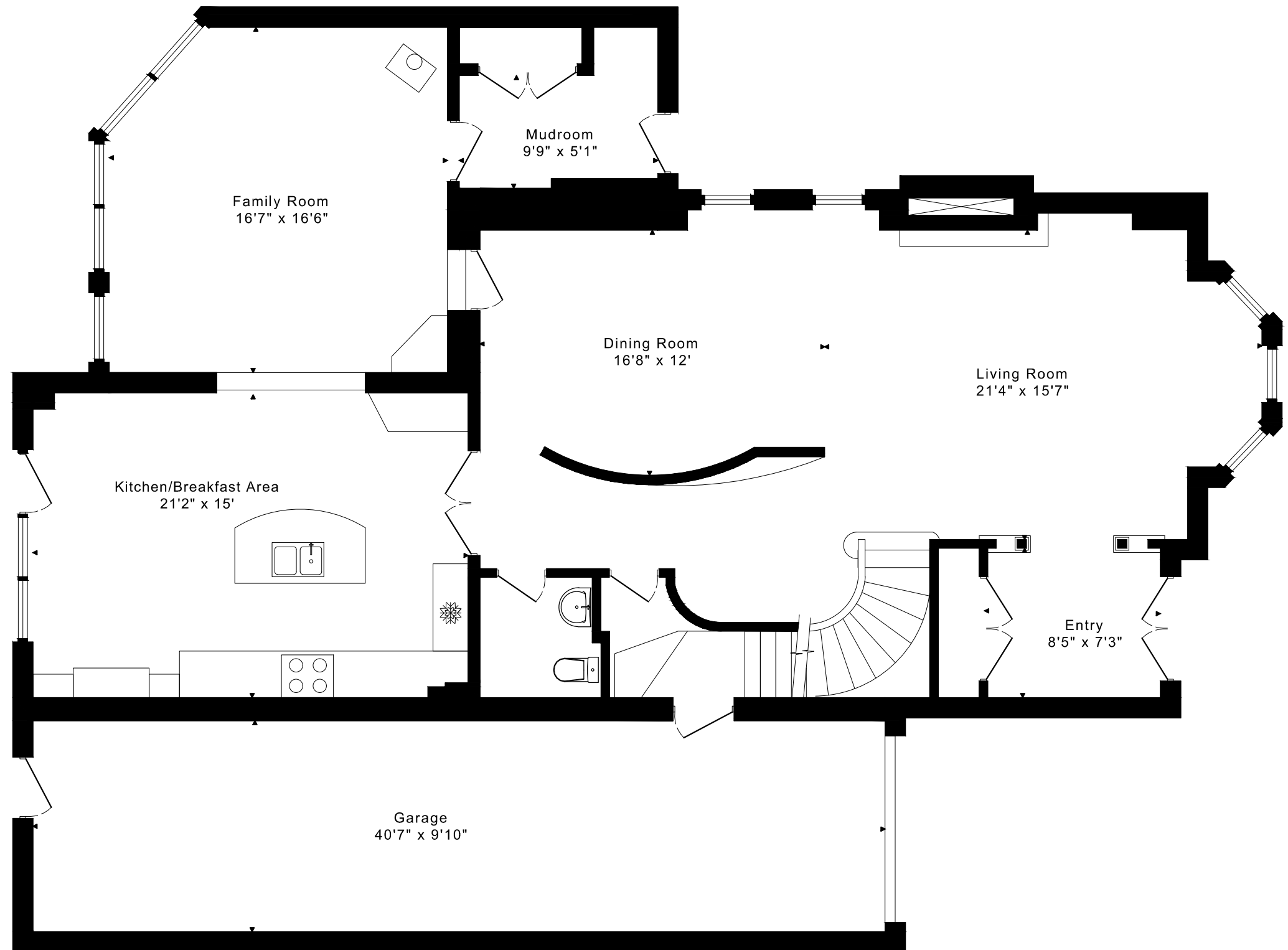
# 295 CARLTON STREET FLOOR PLANS



3820 sq ft + 905 sq ft  
BELOW GRADE

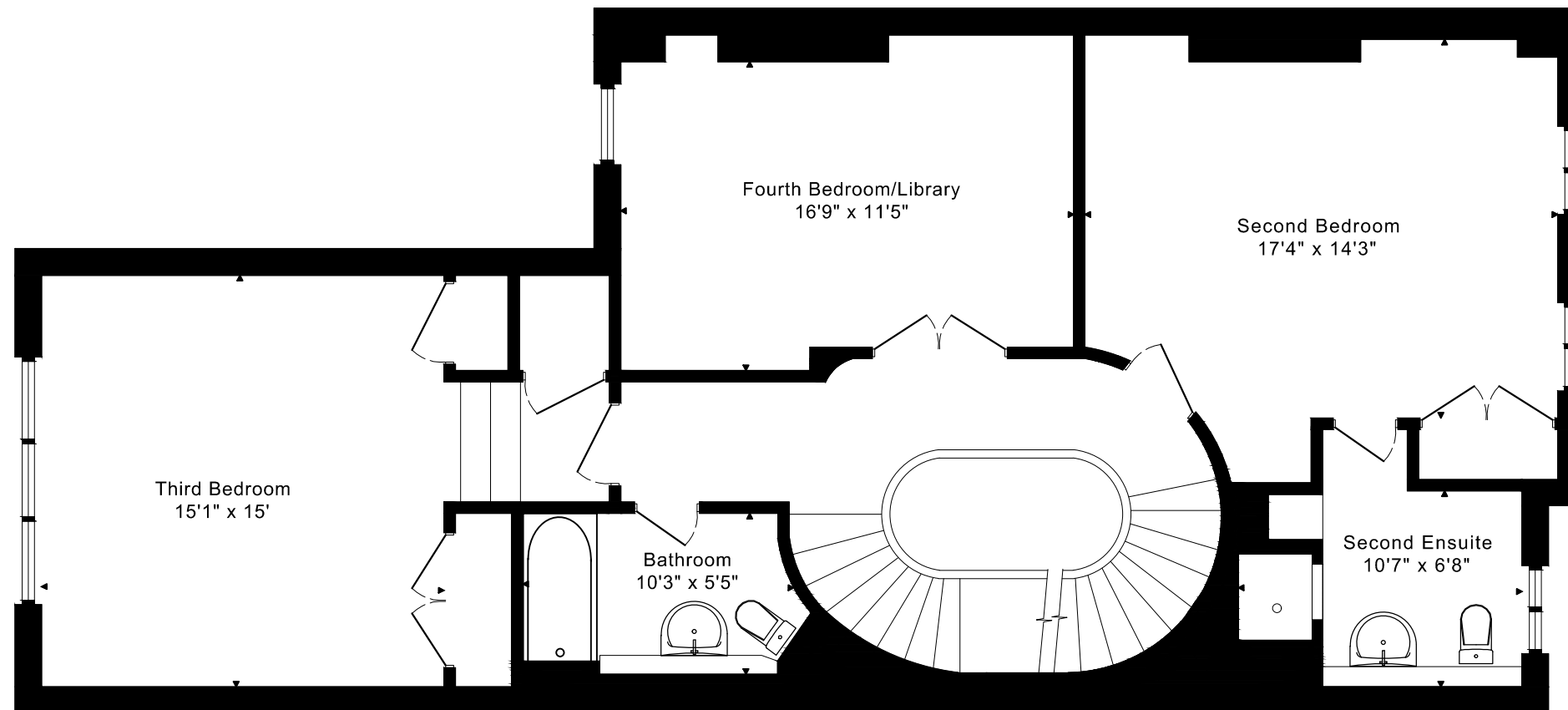
# 295 CARLTON STREET FLOOR PLANS

MAIN FLOOR 1695 SQUARE FEET



# 295 CARLTON STREET FLOOR PLANS

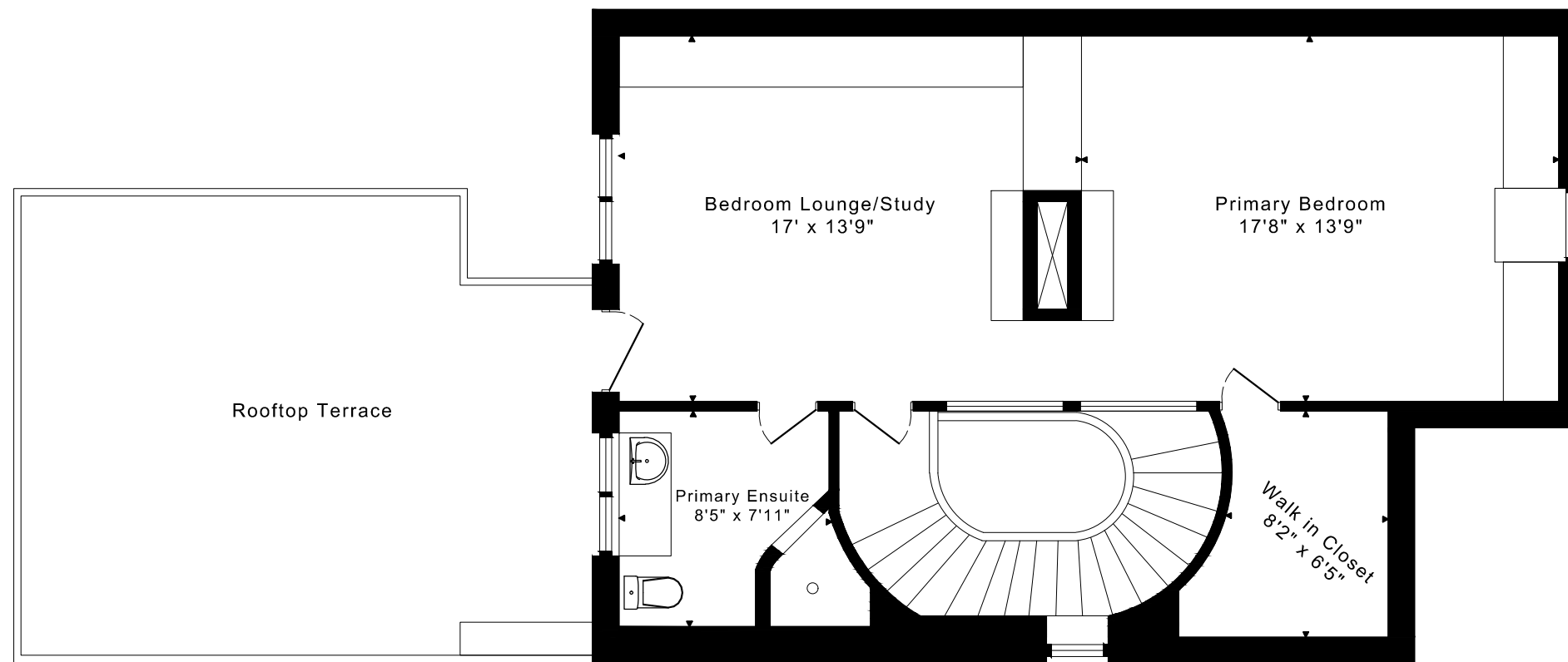
## SECOND FLOOR 1295 SQUARE FEET



# 295 CARLTON STREET

## FLOOR PLANS

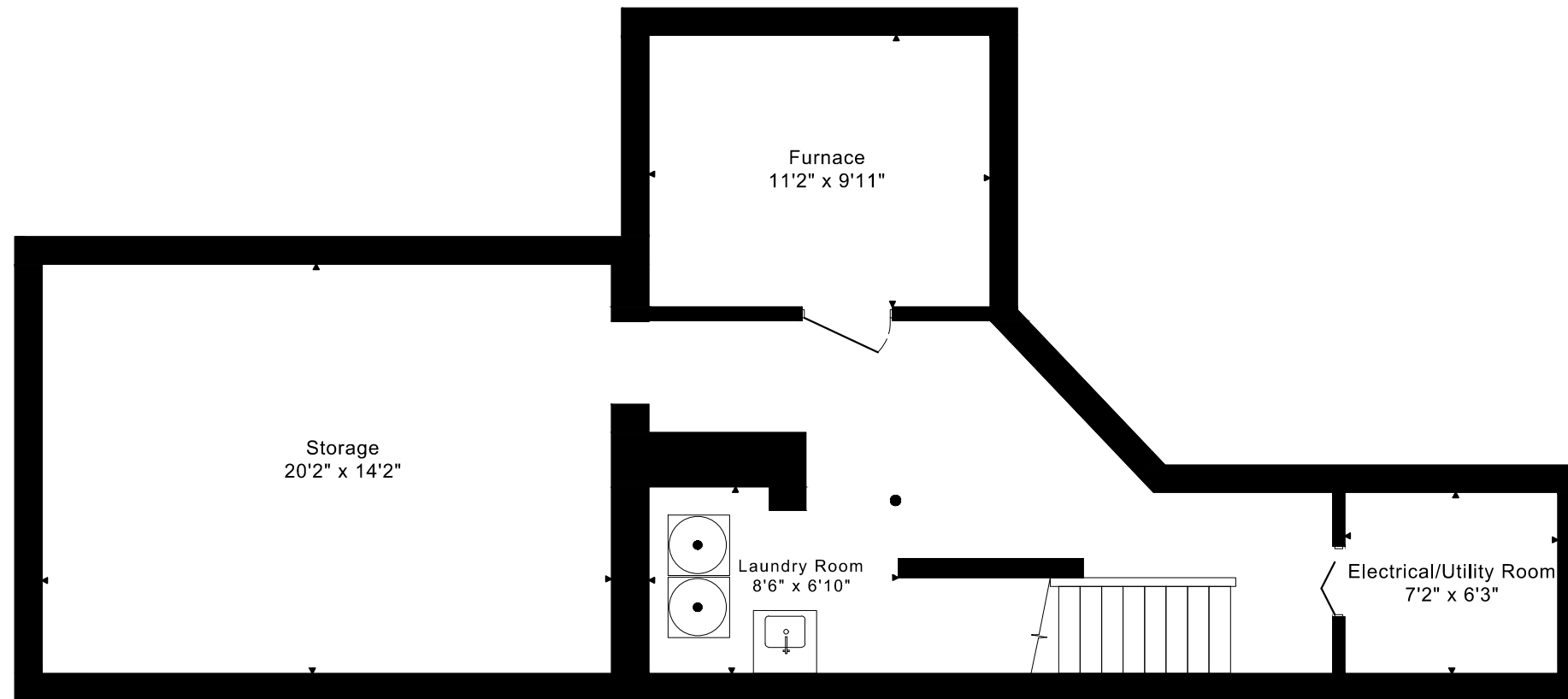
THIRD FLOOR 830 SQUARE FEET



# 295 CARLTON STREET

## FLOOR PLANS

LOWER FLOOR 905 SQUARE FEET



295 CARLTON STREET ROOM MEASUREMENTS

Floor	Room	Imperial						Metric [m]		
		Length		Width		Height		Length	Width	Height
		Feet	Inches	Feet	Inches	Feet	Inches			
Third	Primary Bedroom	17	8	13	9	10	4	5,38	4,19	3,15
	Bedroom Lounge/Study	17	0	13	9	10	4	5,18	4,19	3,15
	Primary Ensuite	8	5	7	11	8	1	2,57	2,41	2,46
	Walk in Closet	8	2	6	5	9	9	2,49	1,96	2,97
Second	Second Bedroom	17	4	14	3	10	0	5,28	4,34	3,05
	Second Ensuite	10	7	6	8	10	0	3,23	2,03	3,05
	Third Bedroom	15	1	15	0	9	6	4,60	4,57	2,90
	Fourth Bedroom/Library	16	9	11	5	10	0	5,11	3,48	3,05
	Bathroom	10	3	5	5	8	11	3,12	1,65	2,72
Main	Entry	8	5	7	3	11	0	2,57	2,21	3,35
	Living Room	21	4	15	7	11	0	6,50	4,75	3,35
	Dining Room	16	8	12	0	11	0	5,08	3,66	3,35
	Kitchen/Breakfast Area	21	2	15	0	9	2	6,45	4,57	2,79
	Family Room	16	7	16	6	10	3	5,05	5,03	3,12
	Mudroom	9	9	5	1	10	3	2,97	1,55	3,12
	Garage	40	7	9	10	13	1	12,37	3,00	3,99
Lower	Storage	20	2	14	2	6	6	6,15	4,32	1,98
	Laundry Room	8	6	6	10	6	6	2,59	2,08	1,98
	Furnace	11	2	9	11	6	6	3,40	3,02	1,98
	Electrical/Utility Room	7	2	6	3	6	6	2,18	1,91	1,98

CAPTURED ON: 10 SEP 2025  
 DIMENSIONS ARE APPROXIMATE AND SHOULD BE CONSIDERED  
 ILLUSTRATIVE ONLY.

3820 sq ft + 905 sq ft  
 BELOW GRADE

The following is a disclaimer regarding the approximate nature of dimensions and floor areas listed in this document:

---

**Disclaimer:**

The dimensions and floor areas listed in this document are provided as an estimate only and are intended to be used for illustration purposes only. These measurements are not necessarily meant to be a perfect representation of the actual space.

**Notes regarding measurement methods and accuracy:**

The utilization of laser measurement technology during the 3D model capturing process at the location provides an accurate representation of floor plans, with a typical margin of error of 3-5%. For the most accurate and official measurement data, it is advised to consult official documents such as MPAC records, builder's pre-construction plans, or data from certified measurement companies.

Exterior wall thickness is included in the calculation of the overall square footage and is considered as a component of the footprint. The wall thickness measurement is obtained onsite whenever possible, or estimated in the event where obtaining onsite measurements is not possible, such as in the case of condominium buildings where wall thickness may vary throughout the building.