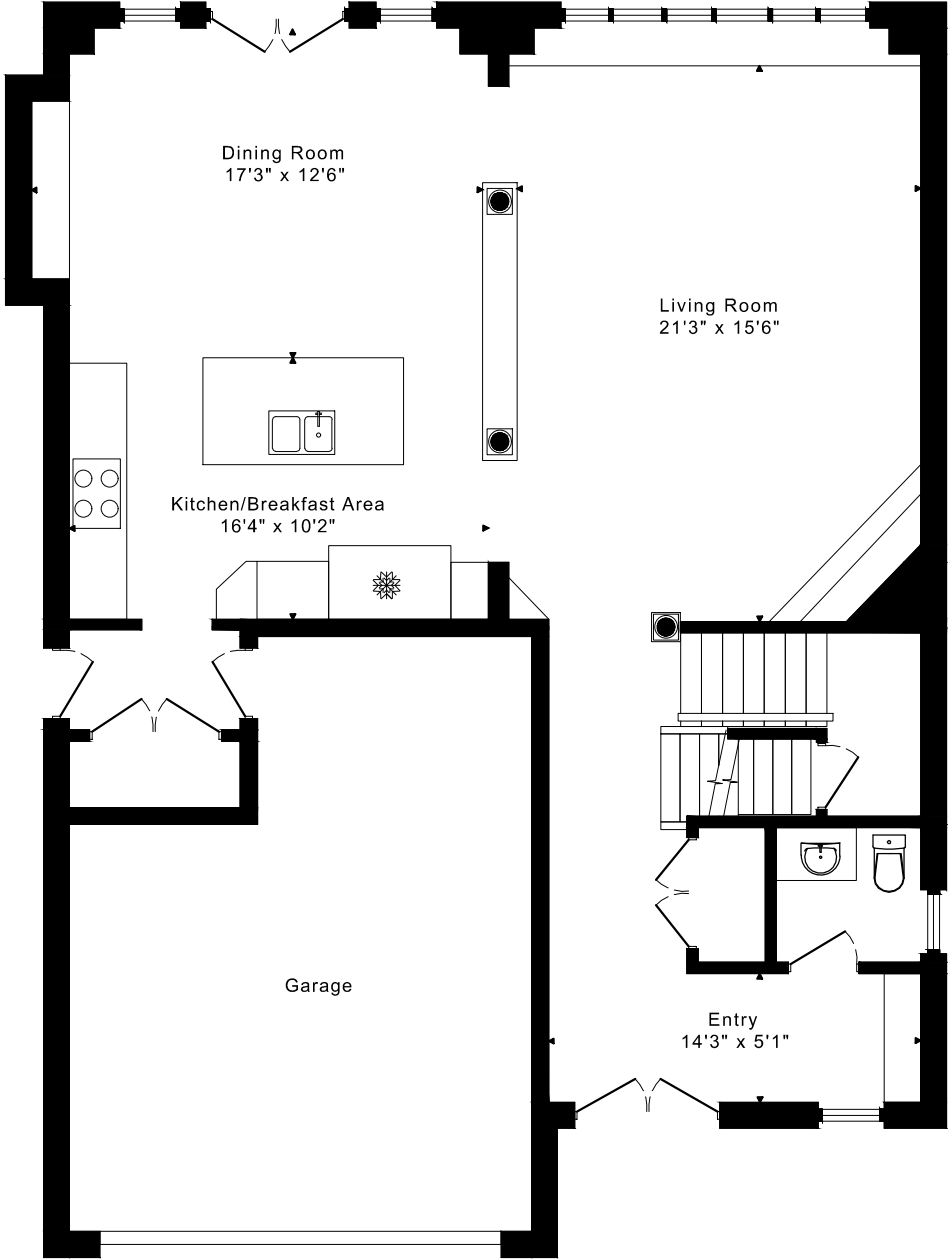
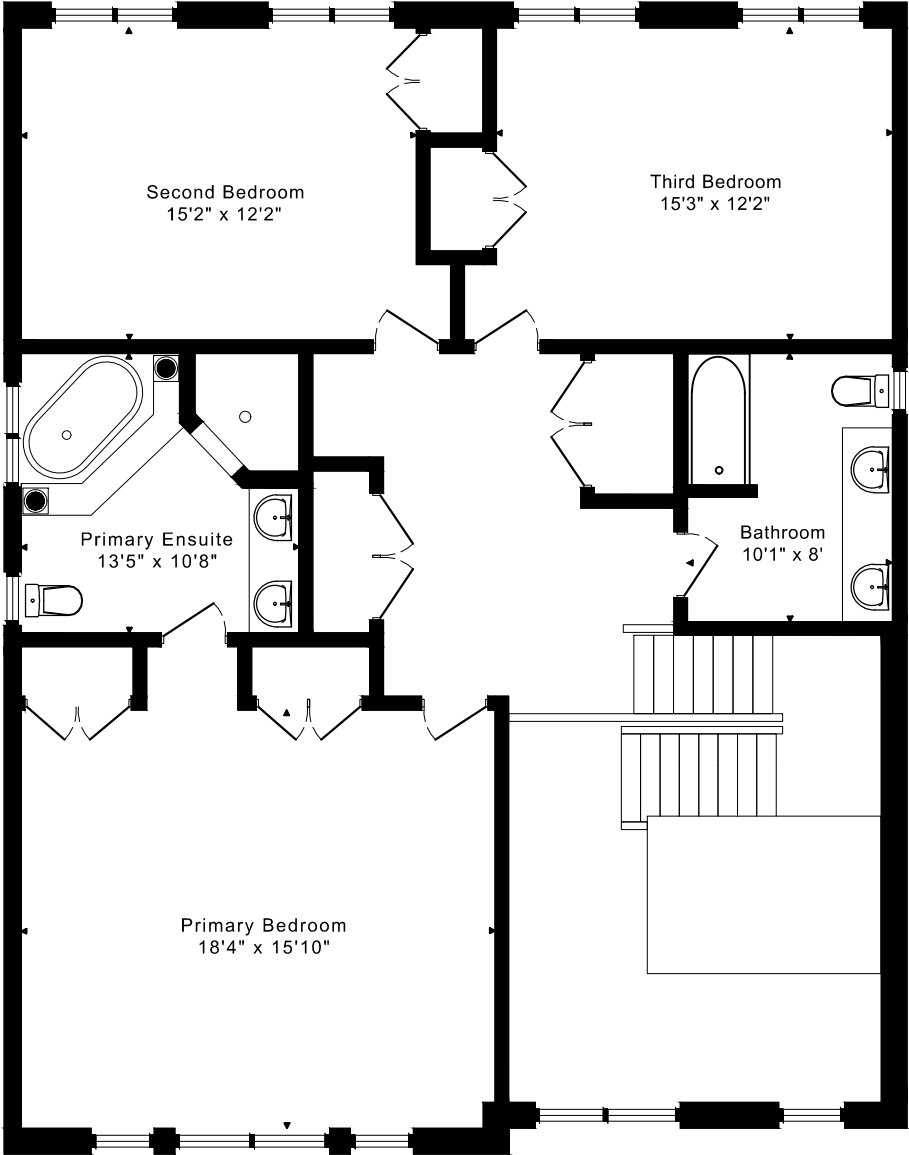


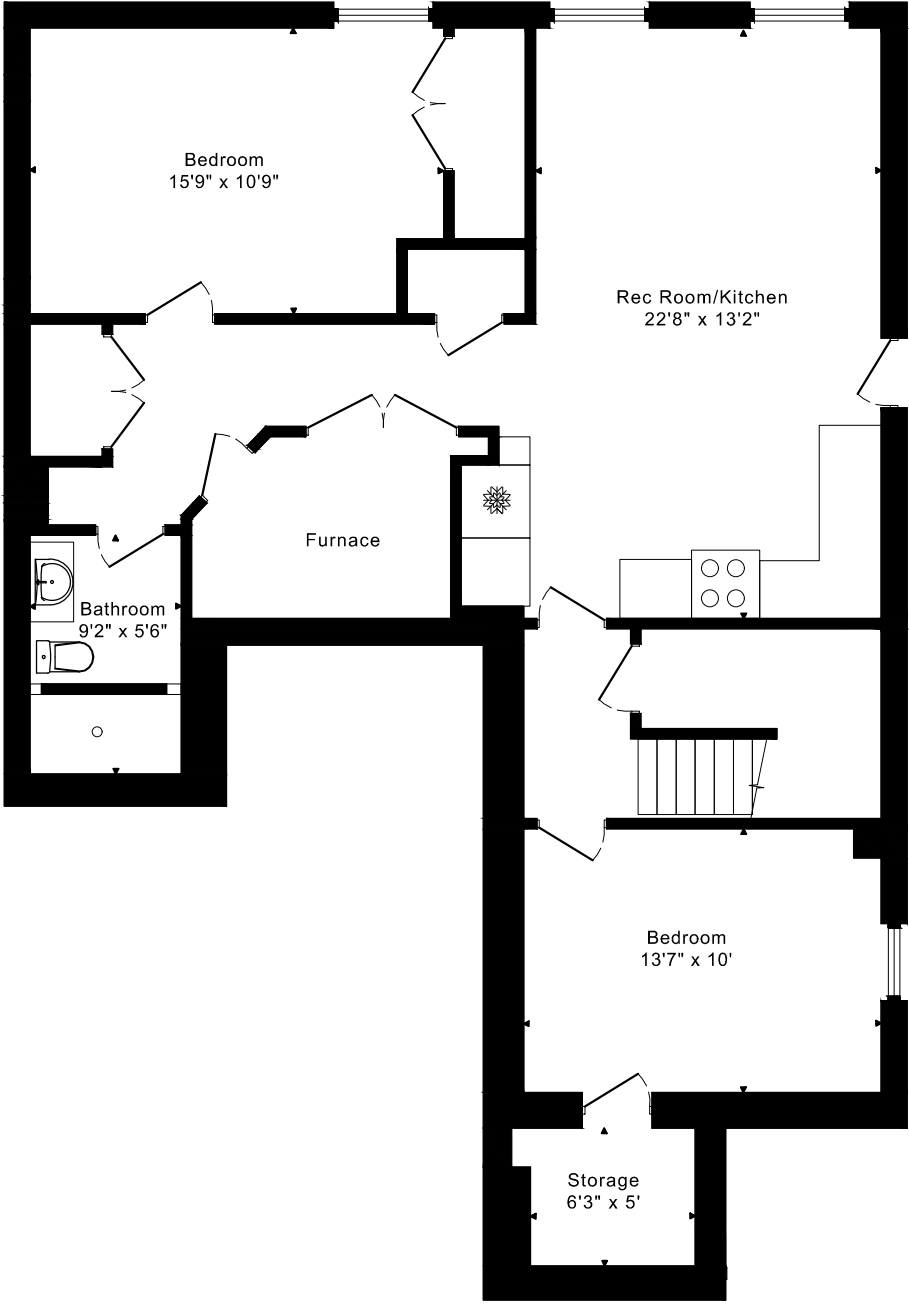
32 CHAMBERS DRIVE
FLOOR PLANS



MAIN FLOOR
1185 SQUARE FEET



SECOND FLOOR
1280 SQUARE FEET

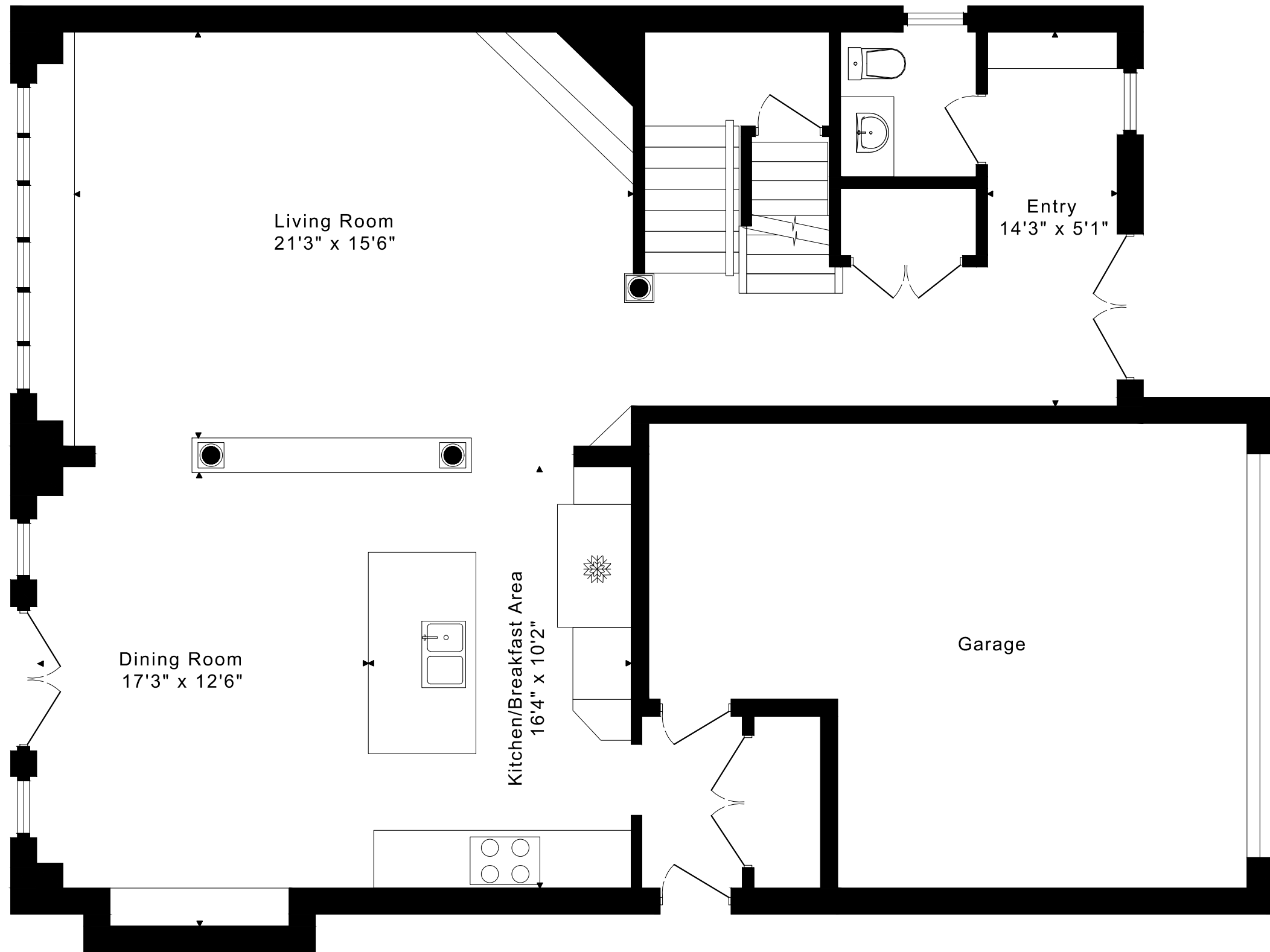


LOWER FLOOR
1240 SQUARE FEET

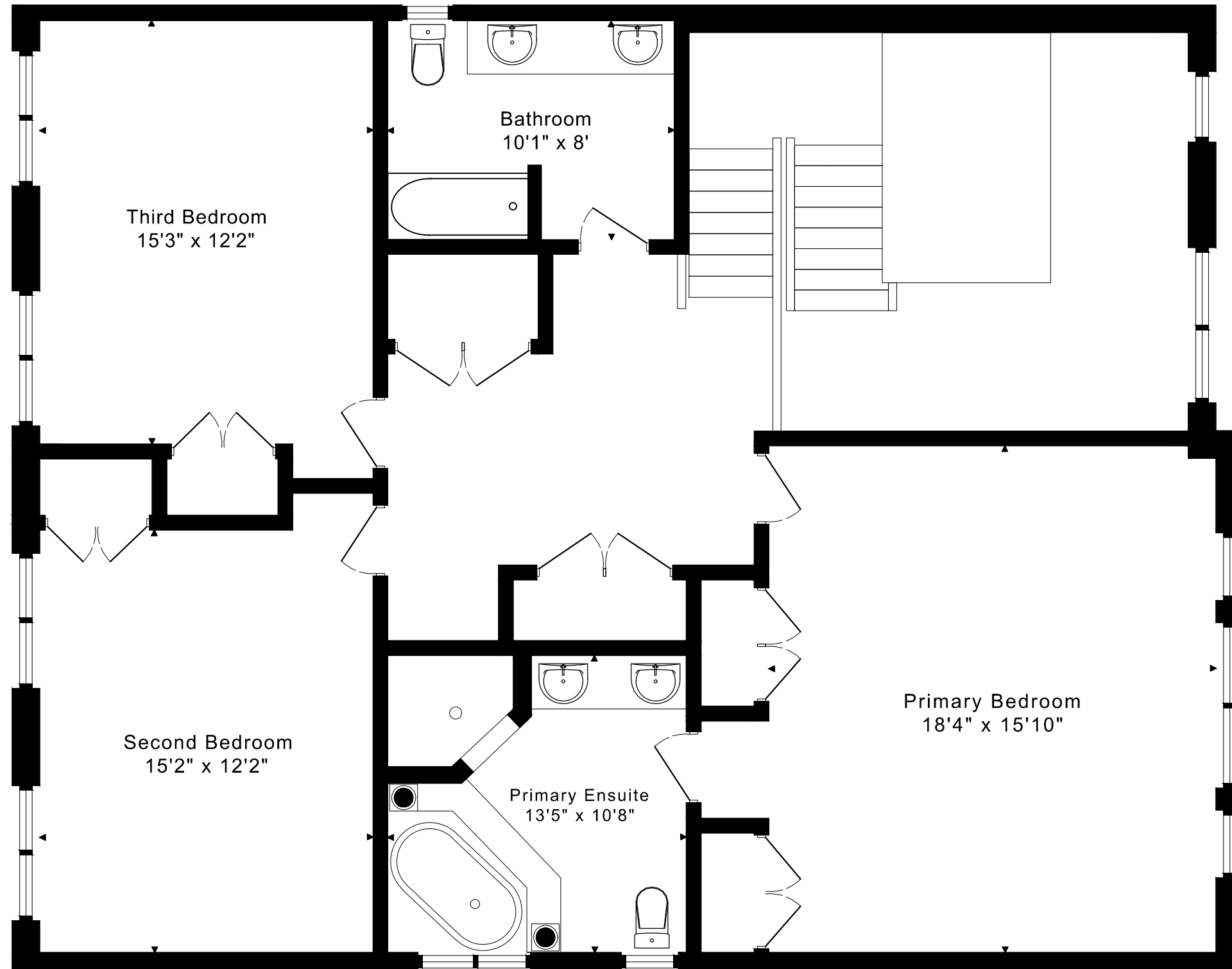
32 CHAMBERS DRIVE

FLOOR PLANS

MAIN FLOOR 1185 SQUARE FEET



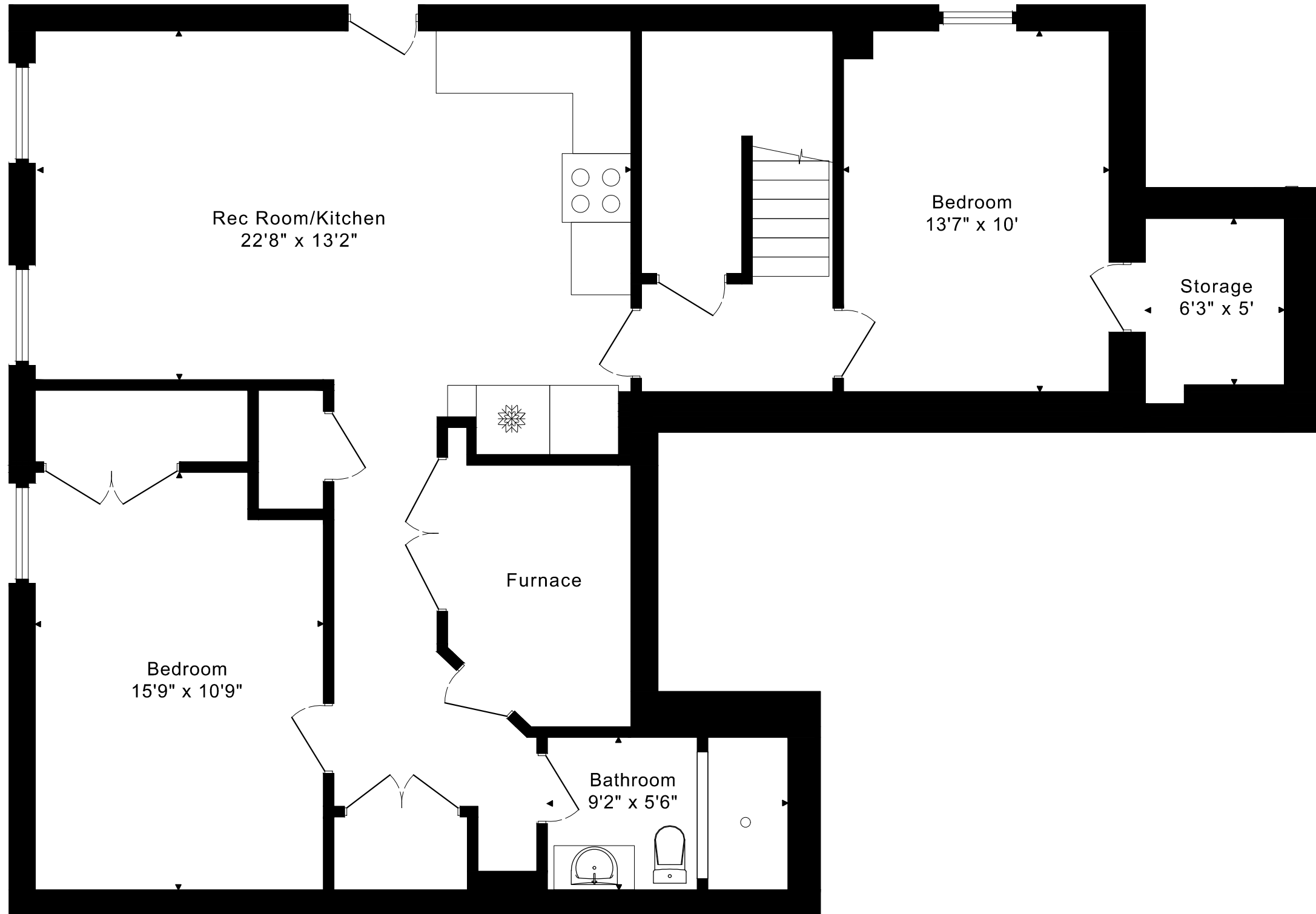
32 CHAMBERS DRIVE
FLOOR PLANS
SECOND FLOOR 1280 SQUARE FEET



32 CHAMBERS DRIVE

FLOOR PLANS

LOWER FLOOR 1240 SQUARE FEET



32 CHAMBERS DRIVE ROOM MEASUREMENTS

Floor	Room	Imperial						Metric [m]		
		Length		Width		Height		Length	Width	Height
		Feet	Inches	Feet	Inches	Feet	Inches			
Second	Primary Bedroom	18	4	15	10	8	1	5,59	4,83	2,46
	Primary Ensuite	13	5	10	8	8	1	4,09	3,25	2,46
	Second Bedroom	15	2	12	2	8	1	4,62	3,71	2,46
	Third Bedroom	15	3	12	2	8	1	4,65	3,71	2,46
	Bathroom	10	1	8	0	8	1	3,07	2,44	2,46
Main	Entry	14	3	5	1	19	0	4,34	1,55	5,79
	Living Room	21	3	15	6	10	1	6,48	4,72	3,07
	Dining Room	17	3	12	6	10	1	5,26	3,81	3,07
	Kitchen/Breakfast Area	16	4	10	2	10	1	4,98	3,10	3,07
Lower	Rec Room/Kitchen	22	8	13	2	8	8	6,91	4,01	2,64
	Bedroom	13	7	10	0	8	8	4,14	3,05	2,64
	Bedroom	15	9	10	9	8	8	4,80	3,28	2,64
	Bathroom	9	2	5	6	7	6	2,79	1,68	2,29
	Storage	6	3	5	0	8	8	1,91	1,52	2,64

CAPTURED ON: 26 AUG 2025
DIMENSIONS ARE APPROXIMATE AND SHOULD BE CONSIDERED
ILLUSTRATIVE ONLY.

2465 sq ft + 1240 sq ft
BELOW GRADE

The following is a disclaimer regarding the approximate nature of dimensions and floor areas listed in this document:

Disclaimer:

The dimensions and floor areas listed in this document are provided as an estimate only and are intended to be used for illustration purposes only. These measurements are not necessarily meant to be a perfect representation of the actual space.

Notes regarding measurement methods and accuracy:

The utilization of laser measurement technology during the 3D model capturing process at the location provides an accurate representation of floor plans, with a typical margin of error of 3-5%. For the most accurate and official measurement data, it is advised to consult official documents such as MPAC records, builder's pre-construction plans, or data from certified measurement companies.

Exterior wall thickness is included in the calculation of the overall square footage and is considered as a component of the footprint. The wall thickness measurement is obtained onsite whenever possible, or estimated in the event where obtaining onsite measurements is not possible, such as in the case of condominium buildings where wall thickness may vary throughout the building.