

Home report

11 Patton Street, Lawrence, Essex County, Massachusetts,
United States, 01843



Total Area: 1530 sq. ft
Below Ground: 0 sq. ft, Floor 2: 888 sq. ft, Floor 3: 642 sq. ft
Excluded: Basement 587 sq. ft, Low ceiling 15 sq. ft, Walls: 174 sq. ft

Property summary

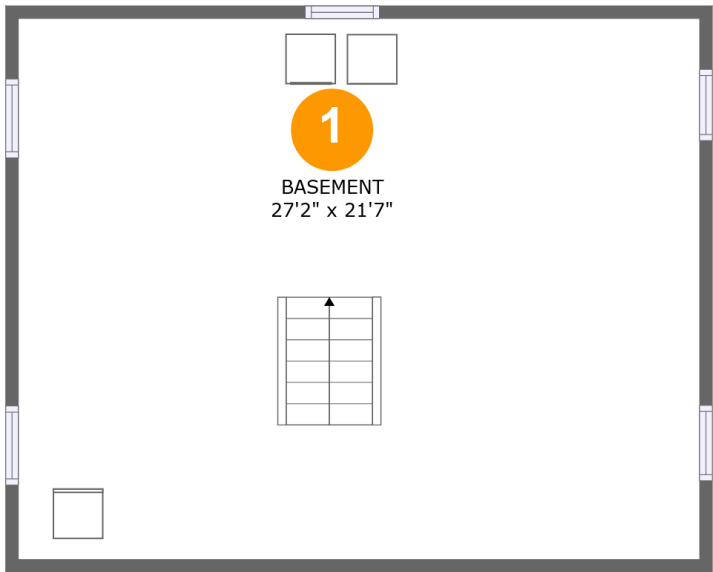
 **3** Floors

 **3** Bedrooms

 **1** Bathrooms

 **1** Half baths

11 Patton Street, Lawrence, Essex County, Massachusetts,
United States, 01843



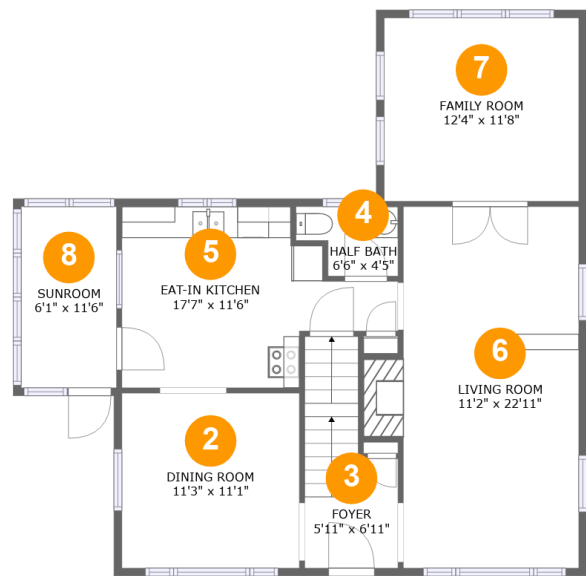
Room dimensions

Floor 1 Below ground Total:0sqft Excluded: 587sqft

#		Max Dimensions	sqft	Included
1	Basement	27'2" x 21'7"	587 sq. ft	No

Home report

11 Patton Street, Lawrence, Essex County, Massachusetts,
United States, 01843



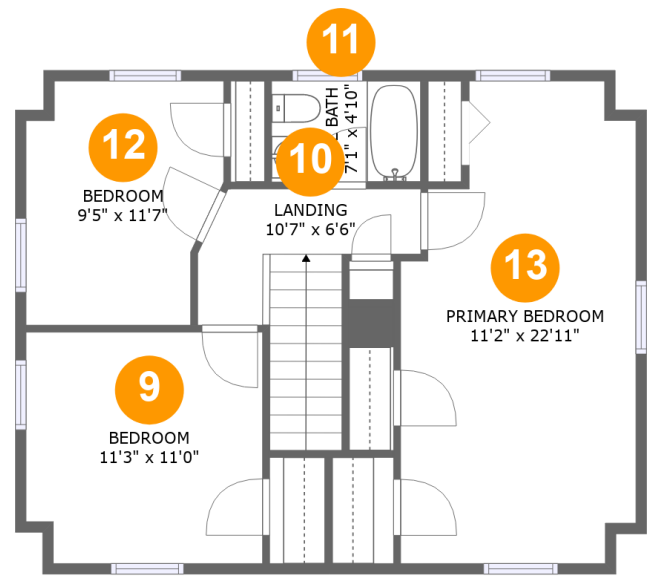
Room dimensions

Floor 2 Total:888sqft Excluded: 0sqft

#		Max Dimensions	sqft	Included
2	Dining Room	11'3" x 11'1"	125 sq. ft	Yes
3	Foyer	5'11" x 6'11"	68 sq. ft	Yes
4	Half Bath	6'6" x 4'5"	24 sq. ft	Yes
5	Eat-in Kitchen	17'7" x 11'6"	152 sq. ft	Yes
6	Living Room	11'2" x 22'11"	269 sq. ft	Yes
7	Family Room	12'4" x 11'8"	144 sq. ft	Yes
8	Sunroom	6'1" x 11'6"	70 sq. ft	Yes

Home report

11 Patton Street, Lawrence, Essex County, Massachusetts,
United States, 01843



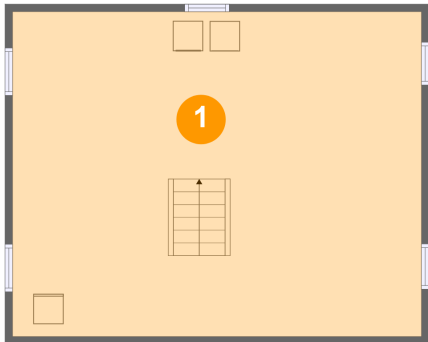
Room dimensions

Floor 3 Total:642sqft Excluded: 15sqft

#		Max Dimensions	sqft	Included
9	Bedroom	11'3" x 11'0"	118 sq. ft	Yes
10	Landing	10'7" x 6'6"	74 sq. ft	Yes
11	Full Bath	7'1" x 4'10"	34 sq. ft	Yes
12	Bedroom	9'5" x 11'7"	95 sq. ft	Yes
13	Primary Bedroom	11'2" x 22'11"	223 sq. ft	Yes

11 Patton Street, Lawrence, Essex County, Massachusetts,
United States, 01843

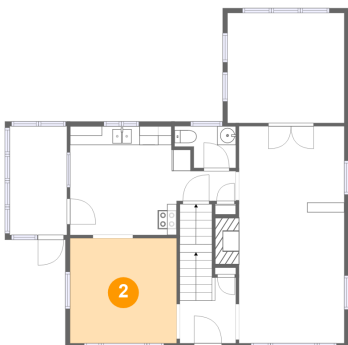
1 Floor 1 - Basement



Max Dimensions: 27'2" x 21'7"
Calculated Area: 587 sq. ft
Included: No

Heated: Yes
Finished: No
Enclosed: Yes
Contiguous: Yes
Permitted: Yes
Wet space: No
Addition: No
Conversion: No

2 Floor 2 - Dining Room

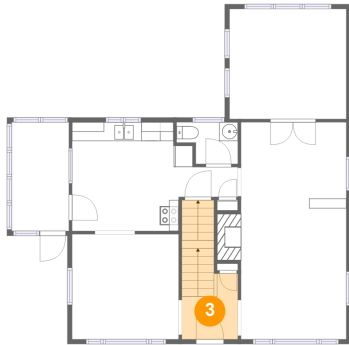


Max Dimensions: 11'3" x 11'1"
Calculated Area: 125 sq. ft
Included: Yes

Heated: Yes
Finished: Yes
Enclosed: Yes
Contiguous: Yes
Permitted: Yes
Wet space: No
Addition: No
Conversion: No

11 Patton Street, Lawrence, Essex County, Massachusetts,
United States, 01843

3 Floor 2 - Foyer



Max Dimensions: 5'11" x 6'11"
Calculated Area: 68 sq. ft
Included: Yes

Heated: Yes
Finished: Yes
Enclosed: Yes
Contiguous: Yes
Permitted: Yes
Wet space: No
Addition: No
Conversion: No

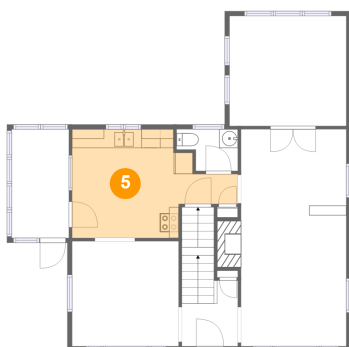
4 Floor 2 - Half Bath



Max Dimensions: 6'6" x 4'5"
Calculated Area: 24 sq. ft
Included: Yes

Heated: Yes
Finished: Yes
Enclosed: Yes
Contiguous: Yes
Permitted: Yes
Wet space: Yes
Addition: No
Conversion: No

5 Floor 2 - Eat-in Kitchen

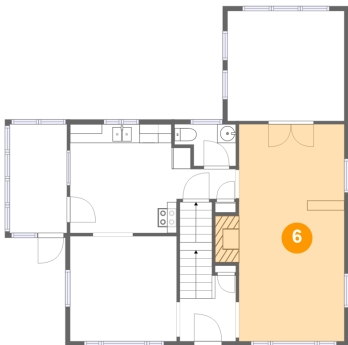


Max Dimensions: 17'7" x 11'6"
Calculated Area: 152 sq. ft
Included: Yes

Heated: Yes
Finished: Yes
Enclosed: Yes
Contiguous: Yes
Permitted: Yes
Wet space: No
Addition: No
Conversion: No

11 Patton Street, Lawrence, Essex County, Massachusetts,
United States, 01843

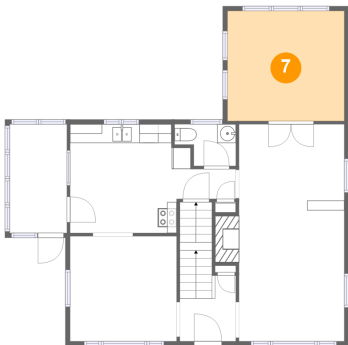
6 Floor 2 - Living Room



Max Dimensions: 11'2" x 22'11"
Calculated Area: 269 sq. ft
Included: Yes

Heated: Yes
Finished: Yes
Enclosed: Yes
Contiguous: Yes
Permitted: Yes
Wet space: No
Addition: No
Conversion: No

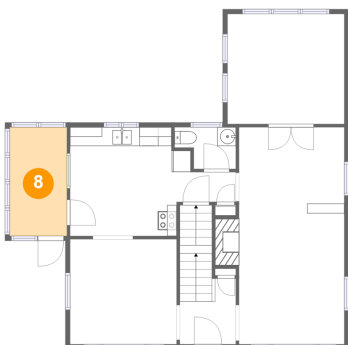
7 Floor 2 - Family Room



Max Dimensions: 12'4" x 11'8"
Calculated Area: 144 sq. ft
Included: Yes

Heated: Yes
Finished: Yes
Enclosed: Yes
Contiguous: Yes
Permitted: Yes
Wet space: No
Addition: No
Conversion: No

8 Floor 2 - Sunroom

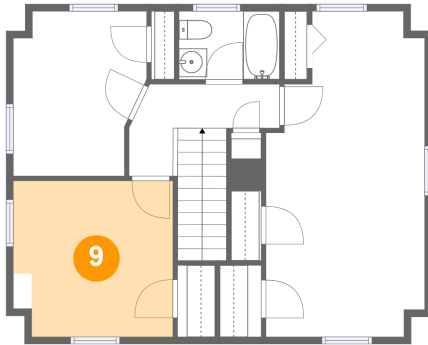


Max Dimensions: 6'1" x 11'6"
Calculated Area: 70 sq. ft
Included: Yes

Heated: Yes
Finished: Yes
Enclosed: Yes
Contiguous: Yes
Permitted: Yes
Wet space: No
Addition: No
Conversion: No

11 Patton Street, Lawrence, Essex County, Massachusetts,
United States, 01843

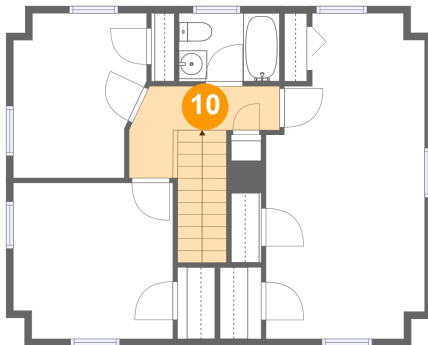
9 Floor 3 - Bedroom



Max Dimensions: 11'3" x 11'0"
Calculated Area: 118 sq. ft
Included: Yes

Heated: Yes
Finished: Yes
Enclosed: Yes
Contiguous: Yes
Permitted: Yes
Wet space: No
Addition: No
Conversion: No

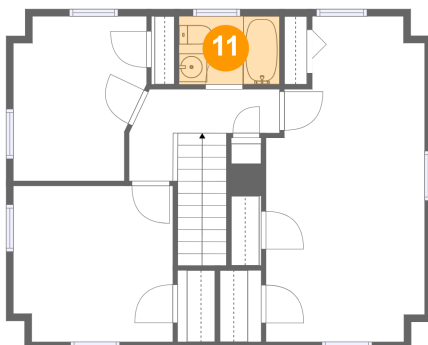
10 Floor 3 - Landing



Max Dimensions: 10'7" x 6'6"
Calculated Area: 74 sq. ft
Included: Yes

Heated: Yes
Finished: Yes
Enclosed: Yes
Contiguous: Yes
Permitted: Yes
Wet space: No
Addition: No
Conversion: No

11 Floor 3 - Full Bath

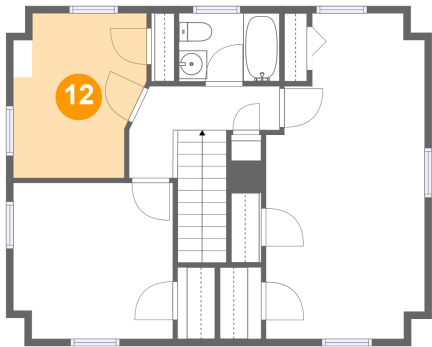


Max Dimensions: 7'1" x 4'10"
Calculated Area: 34 sq. ft
Included: Yes

Heated: Yes
Finished: Yes
Enclosed: Yes
Contiguous: Yes
Permitted: Yes
Wet space: Yes
Addition: No
Conversion: No

11 Patton Street, Lawrence, Essex County, Massachusetts,
United States, 01843

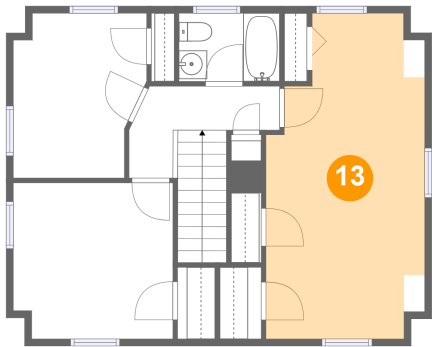
12 Floor 3 - Bedroom



Max Dimensions: 9'5" x 11'7"
Calculated Area: 95 sq. ft
Included: Yes

Heated: Yes
Finished: Yes
Enclosed: Yes
Contiguous: Yes
Permitted: Yes
Wet space: No
Addition: No
Conversion: No

13 Floor 3 - Primary Bedroom



Max Dimensions: 11'2" x 22'11"
Calculated Area: 223 sq. ft
Included: Yes

Heated: Yes
Finished: Yes
Enclosed: Yes
Contiguous: Yes
Permitted: Yes
Wet space: No
Addition: No
Conversion: No