

# CYPRESS SPRINGS

## Architectural Villa



## Property Description

Introducing the CypressSprings at Wild Rose - an architectural villa over 14 acres conveniently located between Deer Park and North Spokane with panoramic views from Mt. Spokane rising in the east across the northernly Selkirk to the foothills of the Huckleberry Range, which provides a backdrop for spectacular sunsets. This zero-entry, two-story contemporary home blends modern design with functional living.

## Plan Specifications



6 Beds



4 Bath



2 Car Garage





Featuring a generous en suite, the balance of the main floor offers thoughtful, comfortable living spaces and flexible options for dining and lifestyle. An attached garage offers direct access, as the home extends its living space outdoors with a rear patio.

## Main Floor

The upstairs offers a generous and versatile layout perfect for relaxing and everyday living.

Showcasing an additional spacious family room, a full bathroom with modern fixtures with two additional bedrooms. This space has the ability to be used in adjustable ways while offering beautiful panoramic views and natural light.



## Upstairs



The finished basement offers an impressive extension of the home's living area. It features three generously sized rooms ideal for guests, office space, or additional hobby space. Ample storage options are also available for household essentials or seasonal items. A versatile and comfortable lower level that adds value for all.

## Basement

*\*A number of options and finishes are available*



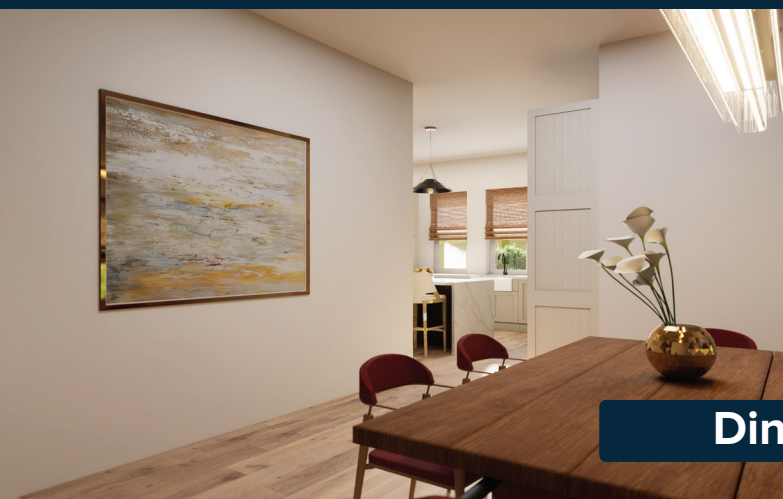
# CYPRESS SPRINGS



Living Room



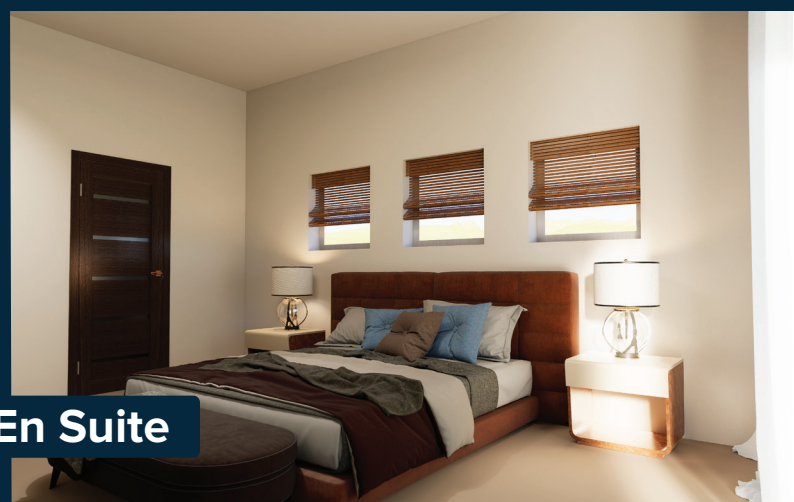
Kitchen



Dining



Primary En Suite



Architctual Villa