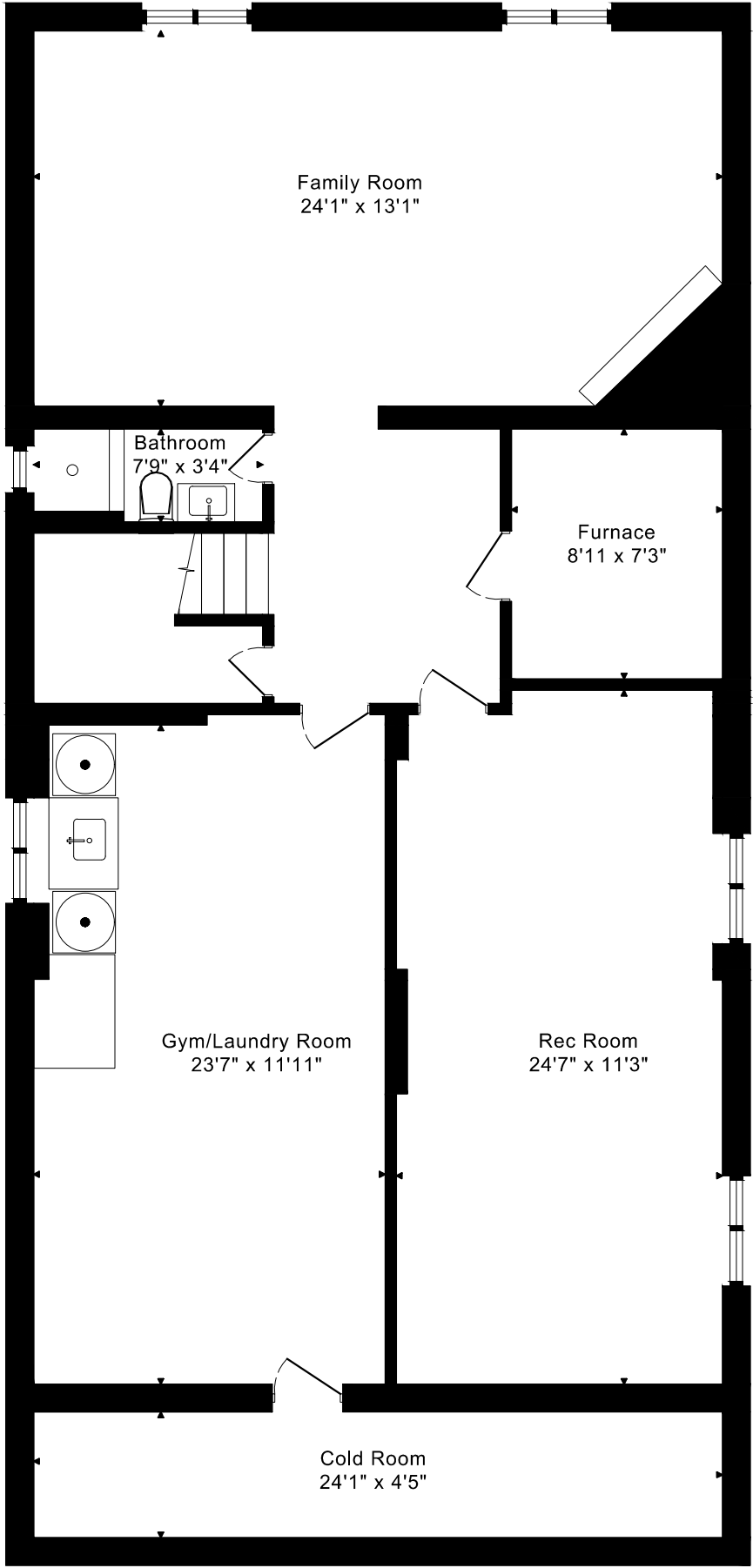
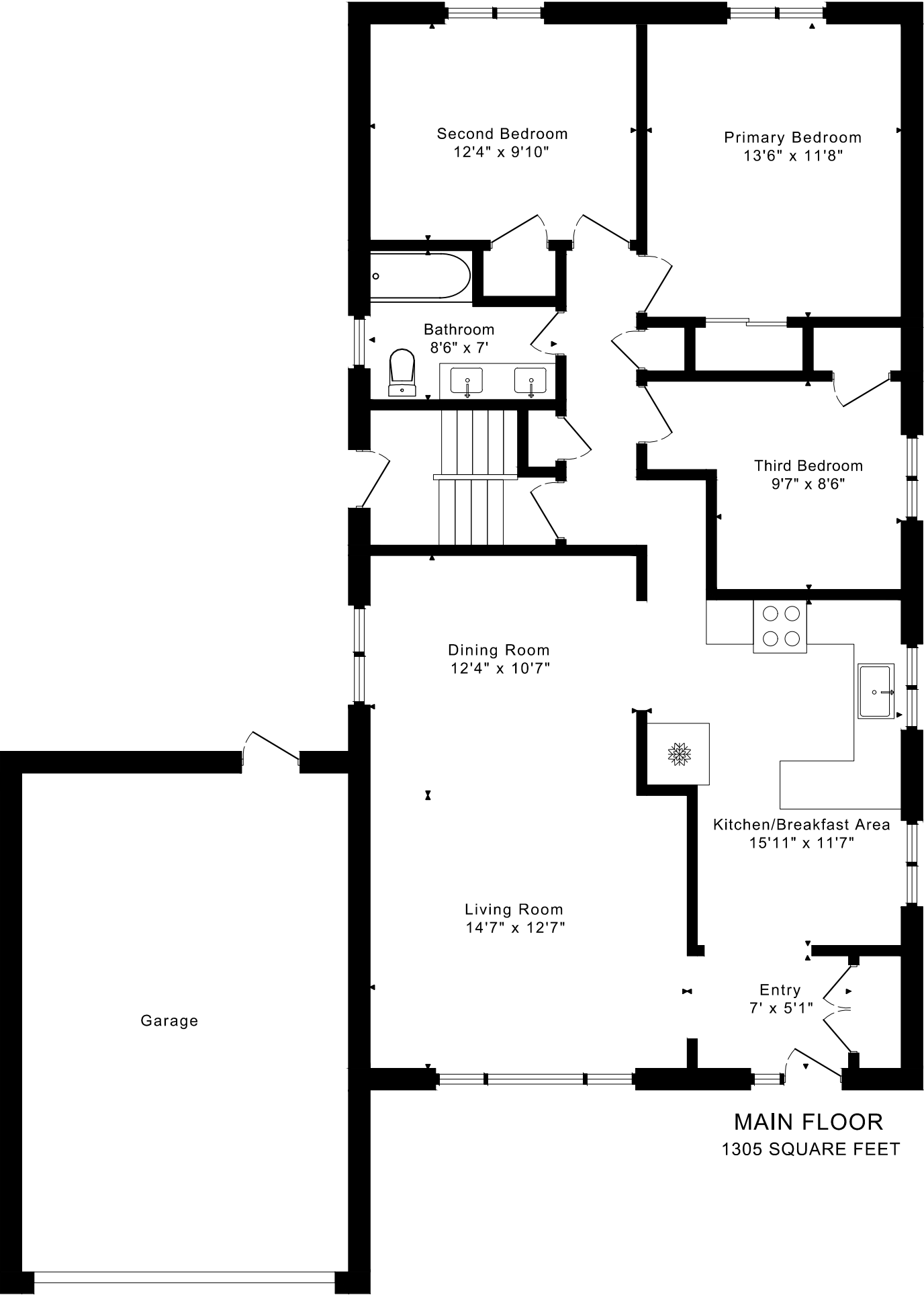


40 LEMONWOOD DRIVE
FLOOR PLANS

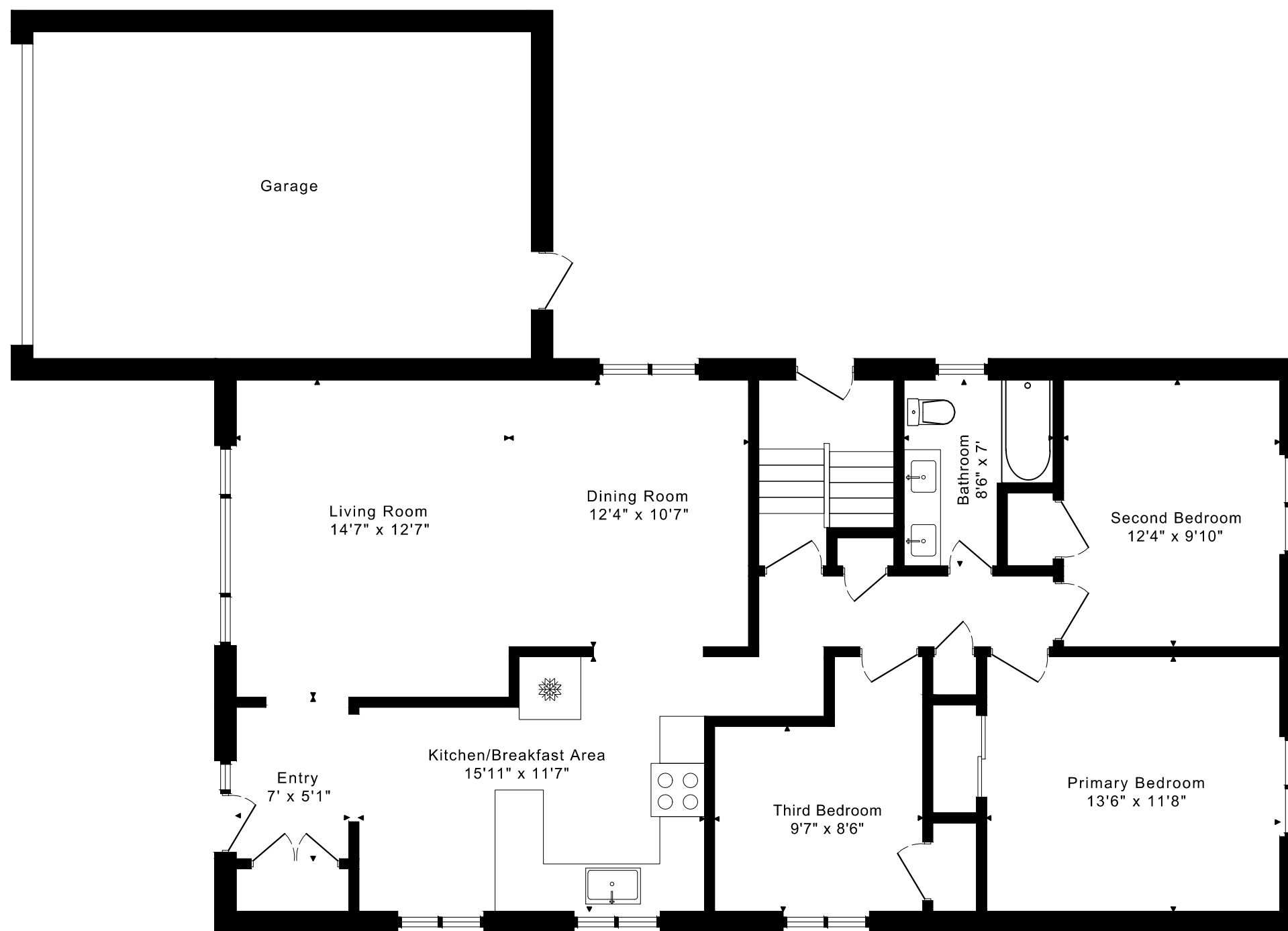


LOWER FLOOR
1445 SQUARE FEET

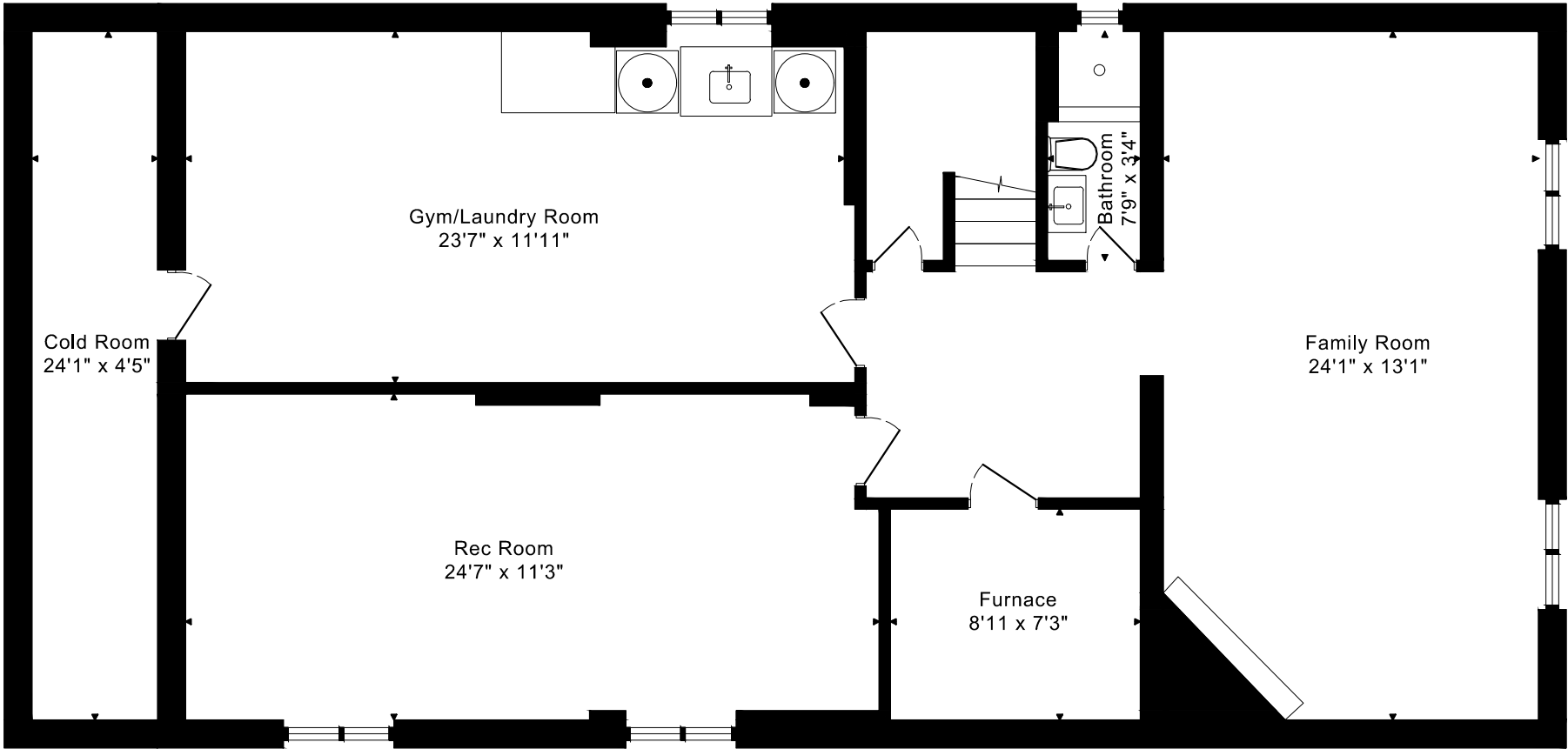
1305 sq ft + 1445 sq ft
BELOW GRADE

40 LEMONWOOD DRIVE FLOOR PLANS

MAIN FLOOR 1305 SQUARE FEET



40 LEMONWOOD DRIVE
FLOOR PLANS
LOWER FLOOR 1445 SQUARE FEET



40 LEMONWOOD DRIVE ROOM MEASUREMENTS

Floor	Room	Imperial						Metric [m]		
		Length		Width		Height		Length	Width	Height
		Feet	Inches	Feet	Inches	Feet	Inches			
Main	Entry	7	0	5	1	8	1	2,13	1,55	2,46
	Living Room	14	7	12	7	8	1	4,45	3,84	2,46
	Dining Room	12	4	10	7	8	1	3,76	3,23	2,46
	Kitchen/Breakfast Area	15	11	11	7	8	1	4,85	3,53	2,46
	Primary Bedroom	13	6	11	8	8	1	4,11	3,56	2,46
	Second Bedroom	12	4	9	10	8	1	3,76	3,00	2,46
	Third Bedroom	9	7	8	6	8	1	2,92	2,59	2,46
	Bathroom	8	6	7	0	7	11	2,59	2,13	2,41
Lower	Family Room	24	1	13	1	7	3	7,34	3,99	2,21
	Rec Room	24	7	11	3	7	3	7,49	3,43	2,21
	Gym/Laundry Room	23	7	11	11	7	3	7,19	3,63	2,21
	Furnace	8	11	7	3	7	3	2,72	2,21	2,21
	Bathroom	7	9	3	4	7	3	2,36	1,02	2,21
	Cold Room	24	1	4	5	7	3	7,34	1,35	2,21

CAPTURED ON: 13 SEP 2025
DIMENSIONS ARE APPROXIMATE AND SHOULD BE CONSIDERED
ILLUSTRATIVE ONLY.

1305 sq ft + 1445 sq ft
BELOW GRADE

The following is a disclaimer regarding the approximate nature of dimensions and floor areas listed in this document:

Disclaimer:

The dimensions and floor areas listed in this document are provided as an estimate only and are intended to be used for illustration purposes only. These measurements are not necessarily meant to be a perfect representation of the actual space.

Notes regarding measurement methods and accuracy:

The utilization of laser measurement technology during the 3D model capturing process at the location provides an accurate representation of floor plans, with a typical margin of error of 3-5%. For the most accurate and official measurement data, it is advised to consult official documents such as MPAC records, builder's pre-construction plans, or data from certified measurement companies.

Exterior wall thickness is included in the calculation of the overall square footage and is considered as a component of the footprint. The wall thickness measurement is obtained onsite whenever possible, or estimated in the event where obtaining onsite measurements is not possible, such as in the case of condominium buildings where wall thickness may vary throughout the building.