

Home report

3939 Fox Road, Laveen, Maricopa County, Arizona, United States, 85339



Total Area: 3952 sq. ft

Floor 1: 3952 sq. ft

Excluded: Garage 2778 sq. ft, Utility 56 sq. ft, Covered patio 1880 sq. ft, Walls: 353 sq. ft

Property summary

1 Floors

3 Bedrooms

4 Bathrooms

Home report

3939 Fox Road, Laveen, Maricopa County, Arizona, United States, 85339



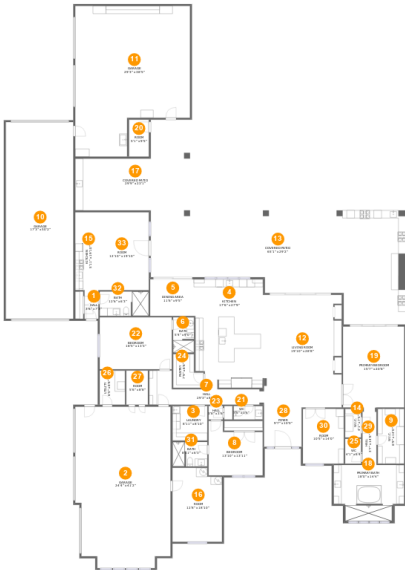
1
Half baths



3
Garages

Home report

3939 Fox Road, Laveen, Maricopa County, Arizona, United States, 85339



Room dimensions

Floor 1 Total:3952sqft Excluded: 4714sqft

#		Max Dimensions	sqft	Included
1	Hall	3'6" x 7'3"	26 sq. ft	Yes
2	Garage	24'4" x 41'2"	950 sq. ft	No
3	Laundry	8'11" x 8'10"	79 sq. ft	Yes
4	Kitchen	17'6" x 27'9"	479 sq. ft	Yes
5	Dining Area	11'6" x 9'5"	108 sq. ft	Yes
6	Bath	5'4" x 9'0"	47 sq. ft	Yes
7	Hall	29'3" x 8'8"	143 sq. ft	Yes
8	Bedroom	13'10" x 13'11"	163 sq. ft	Yes
9	W.I.C.	6'9" x 14'0"	95 sq. ft	Yes
10	Garage	17'3" x 50'2"	863 sq. ft	No
11	Garage	29'3" x 38'5"	965 sq. ft	No

Home report

3939 Fox Road, Laveen, Maricopa County, Arizona, United States, 85339

#		Max Dimensions	sqft	Included
12	Living Room	19'10" x 28'8"	550 sq. ft	Yes
13	Covered Patio	65'1" x 29'2"	1384 sq. ft	No
14	W.I.C.	4'1" x 7'4"	30 sq. ft	Yes
15	Kitchen	5'11" x 19'10"	117 sq. ft	Yes
16	Room	12'8" x 18'10"	229 sq. ft	Yes
17	Covered Patio	29'9" x 23'1"	496 sq. ft	No
18	Primary Bath	18'0" x 14'4"	232 sq. ft	Yes
19	Primary Bedroom	15'7" x 20'8"	322 sq. ft	Yes
20	Room	5'1" x 9'5"	48 sq. ft	Yes
21	WC	7'5" x 3'6"	26 sq. ft	Yes
22	Bedroom	18'5" x 13'3"	244 sq. ft	Yes
23	Hall	3'8" x 3'6"	13 sq. ft	Yes
24	Pantry	7'9" x 8'8"	56 sq. ft	Yes
25	WC	4'1" x 6'4"	26 sq. ft	Yes
26	Utility	6'5" x 8'8"	56 sq. ft	No
27	Room	5'6" x 8'8"	48 sq. ft	Yes
28	Foyer	9'7" x 10'0"	96 sq. ft	Yes
29	Hall	3'7" x 14'8"	52 sq. ft	Yes
30	Room	10'5" x 14'0"	146 sq. ft	Yes
31	Bath	8'11" x 6'3"	54 sq. ft	Yes
32	Bath	12'6" x 6'3"	77 sq. ft	Yes

Home report

3939 Fox Road, Laveen, Maricopa County, Arizona, United States, 85339

#		Max Dimensions	sqft	Included
33	Room	12'10" x 19'10"	256 sq. ft	Yes

1 Floor 1 - Hall



Max Dimensions: 3'6" x 7'3"
Calculated Area: 26 sq. ft
Included: Yes

Heated: Yes
Finished: Yes
Enclosed: Yes
Contiguous: Yes
Permitted: Yes
Wet space: No
Addition: No
Conversion: No

2 Floor 1 - Garage



Max Dimensions: 24'4" x 41'2"
Calculated Area: 950 sq. ft
Included: No

Heated: No
Finished: No
Enclosed: Yes
Contiguous: Yes
Permitted: Yes
Wet space: No
Addition: No
Conversion: No

3939 Fox Road, Laveen, Maricopa County, Arizona, United States, 85339

3 Floor 1 - Laundry



Max Dimensions: 8'11" x 8'10"
Calculated Area: 79 sq. ft
Included: Yes

Heated: Yes
Finished: Yes
Enclosed: Yes
Contiguous: Yes
Permitted: Yes
Wet space: No
Addition: No
Conversion: No

4 Floor 1 - Kitchen



Max Dimensions: 17'6" x 27'9"
Calculated Area: 479 sq. ft
Included: Yes

Heated: Yes
Finished: Yes
Enclosed: Yes
Contiguous: Yes
Permitted: Yes
Wet space: No
Addition: No
Conversion: No

5 Floor 1 - Dining Area



Max Dimensions: 11'6" x 9'5"
Calculated Area: 108 sq. ft
Included: Yes

Heated: Yes
Finished: Yes
Enclosed: Yes
Contiguous: Yes
Permitted: Yes
Wet space: No
Addition: No
Conversion: No

3939 Fox Road, Laveen, Maricopa County, Arizona, United States, 85339

6 Floor 1 - Bath



Max Dimensions: 5'4" x 9'0"
Calculated Area: 47 sq. ft
Included: Yes

Heated: Yes
Finished: Yes
Enclosed: Yes
Contiguous: Yes
Permitted: Yes
Wet space: Yes
Addition: No
Conversion: No

7 Floor 1 - Hall



Max Dimensions: 29'3" x 8'8"
Calculated Area: 143 sq. ft
Included: Yes

Heated: Yes
Finished: Yes
Enclosed: Yes
Contiguous: Yes
Permitted: Yes
Wet space: No
Addition: No
Conversion: No

8 Floor 1 - Bedroom



Max Dimensions: 13'10" x 13'11"
Calculated Area: 163 sq. ft
Included: Yes

Heated: Yes
Finished: Yes
Enclosed: Yes
Contiguous: Yes
Permitted: Yes
Wet space: No
Addition: No
Conversion: No

9 Floor 1 - W.I.C.



Max Dimensions: 6'9" x 14'0"
Calculated Area: 95 sq. ft
Included: Yes

Heated: Yes
Finished: Yes
Enclosed: Yes
Contiguous: Yes
Permitted: Yes
Wet space: No
Addition: No
Conversion: No

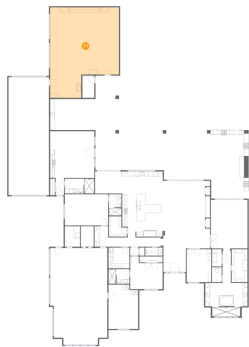
10 Floor 1 - Garage



Max Dimensions: 17'3" x 50'2"
Calculated Area: 863 sq. ft
Included: No

Heated: No
Finished: No
Enclosed: Yes
Contiguous: Yes
Permitted: Yes
Wet space: No
Addition: No
Conversion: No

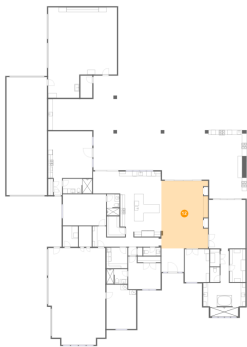
11 Floor 1 - Garage



Max Dimensions: 29'3" x 38'5"
Calculated Area: 965 sq. ft
Included: No

Heated: No
Finished: No
Enclosed: Yes
Contiguous: Yes
Permitted: Yes
Wet space: No
Addition: No
Conversion: No

12 Floor 1 - Living Room



Max Dimensions: 19'10" x 28'8"
Calculated Area: 550 sq. ft
Included: Yes

Heated: Yes
Finished: Yes
Enclosed: Yes
Contiguous: Yes
Permitted: Yes
Wet space: No
Addition: No
Conversion: No

13 Floor 1 - Covered Patio



Max Dimensions: 65'1" x 29'2"
Calculated Area: 1384 sq. ft
Included: No

Heated: No
Finished: Yes
Enclosed: No
Contiguous: Yes
Permitted: Yes
Wet space: No
Addition: No
Conversion: No

14 Floor 1 - W.I.C.



Max Dimensions: 4'1" x 7'4"
Calculated Area: 30 sq. ft
Included: Yes

Heated: Yes
Finished: Yes
Enclosed: Yes
Contiguous: Yes
Permitted: Yes
Wet space: No
Addition: No
Conversion: No

3939 Fox Road, Laveen, Maricopa County, Arizona, United States, 85339

15 Floor 1 - Kitchen



Max Dimensions: 5'11" x 19'10"
Calculated Area: 117 sq. ft
Included: Yes

Heated: Yes
Finished: Yes
Enclosed: Yes
Contiguous: Yes
Permitted: Yes
Wet space: No
Addition: No
Conversion: No

16 Floor 1 - Room



Max Dimensions: 12'8" x 18'10"
Calculated Area: 229 sq. ft
Included: Yes

Heated: Yes
Finished: Yes
Enclosed: Yes
Contiguous: Yes
Permitted: Yes
Wet space: No
Addition: No
Conversion: No

17 Floor 1 - Covered Patio



Max Dimensions: 29'9" x 23'1"
Calculated Area: 496 sq. ft
Included: No

Heated: No
Finished: Yes
Enclosed: No
Contiguous: Yes
Permitted: Yes
Wet space: No
Addition: No
Conversion: No

3939 Fox Road, Laveen, Maricopa County, Arizona, United States, 85339

18 Floor 1 - Primary Bath



Max Dimensions: 18'0" x 14'4"
Calculated Area: 232 sq. ft
Included: Yes

Heated: Yes
Finished: Yes
Enclosed: Yes
Contiguous: Yes
Permitted: Yes
Wet space: Yes
Addition: No
Conversion: No

19 Floor 1 - Primary Bedroom



Max Dimensions: 15'7" x 20'8"
Calculated Area: 322 sq. ft
Included: Yes

Heated: Yes
Finished: Yes
Enclosed: Yes
Contiguous: Yes
Permitted: Yes
Wet space: No
Addition: No
Conversion: No

20 Floor 1 - Room



Max Dimensions: 5'1" x 9'5"
Calculated Area: 48 sq. ft
Included: Yes

Heated: Yes
Finished: Yes
Enclosed: Yes
Contiguous: Yes
Permitted: Yes
Wet space: No
Addition: No
Conversion: No

3939 Fox Road, Laveen, Maricopa County, Arizona, United States, 85339

21 Floor 1 - WC



Max Dimensions: 7'5" x 3'6"
Calculated Area: 26 sq. ft
Included: Yes

Heated: Yes
Finished: Yes
Enclosed: Yes
Contiguous: Yes
Permitted: Yes
Wet space: Yes
Addition: No
Conversion: No

22 Floor 1 - Bedroom



Max Dimensions: 18'5" x 13'3"
Calculated Area: 244 sq. ft
Included: Yes

Heated: Yes
Finished: Yes
Enclosed: Yes
Contiguous: Yes
Permitted: Yes
Wet space: No
Addition: No
Conversion: No

23 Floor 1 - Hall



Max Dimensions: 3'8" x 3'6"
Calculated Area: 13 sq. ft
Included: Yes

Heated: Yes
Finished: Yes
Enclosed: Yes
Contiguous: Yes
Permitted: Yes
Wet space: No
Addition: No
Conversion: No

3939 Fox Road, Laveen, Maricopa County, Arizona, United States, 85339

24 Floor 1 - Pantry



Max Dimensions: 7'9" x 8'8"
Calculated Area: 56 sq. ft
Included: Yes

Heated: Yes
Finished: Yes
Enclosed: Yes
Contiguous: Yes
Permitted: Yes
Wet space: No
Addition: No
Conversion: No

25 Floor 1 - WC



Max Dimensions: 4'1" x 6'4"
Calculated Area: 26 sq. ft
Included: Yes

Heated: Yes
Finished: Yes
Enclosed: Yes
Contiguous: Yes
Permitted: Yes
Wet space: Yes
Addition: No
Conversion: No

26 Floor 1 - Utility



Max Dimensions: 6'5" x 8'8"
Calculated Area: 56 sq. ft
Included: No

Heated: Yes
Finished: No
Enclosed: Yes
Contiguous: Yes
Permitted: Yes
Wet space: No
Addition: No
Conversion: No

27 Floor 1 - Room



Max Dimensions: 5'6" x 8'8"
Calculated Area: 48 sq. ft
Included: Yes

Heated: Yes
Finished: Yes
Enclosed: Yes
Contiguous: Yes
Permitted: Yes
Wet space: No
Addition: No
Conversion: No

28 Floor 1 - Foyer



Max Dimensions: 9'7" x 10'0"
Calculated Area: 96 sq. ft
Included: Yes

Heated: Yes
Finished: Yes
Enclosed: Yes
Contiguous: Yes
Permitted: Yes
Wet space: No
Addition: No
Conversion: No

29 Floor 1 - Hall



Max Dimensions: 3'7" x 14'8"
Calculated Area: 52 sq. ft
Included: Yes

Heated: Yes
Finished: Yes
Enclosed: Yes
Contiguous: Yes
Permitted: Yes
Wet space: No
Addition: No
Conversion: No

3939 Fox Road, Laveen, Maricopa County, Arizona, United States, 85339

30 Floor 1 - Room



Max Dimensions: 10'5" x 14'0"
Calculated Area: 146 sq. ft
Included: Yes

Heated: Yes
Finished: Yes
Enclosed: Yes
Contiguous: Yes
Permitted: Yes
Wet space: No
Addition: No
Conversion: No

31 Floor 1 - Bath



Max Dimensions: 8'11" x 6'3"
Calculated Area: 54 sq. ft
Included: Yes

Heated: Yes
Finished: Yes
Enclosed: Yes
Contiguous: Yes
Permitted: Yes
Wet space: Yes
Addition: No
Conversion: No

32 Floor 1 - Bath



Max Dimensions: 12'6" x 6'3"
Calculated Area: 77 sq. ft
Included: Yes

Heated: Yes
Finished: Yes
Enclosed: Yes
Contiguous: Yes
Permitted: Yes
Wet space: Yes
Addition: No
Conversion: No

3939 Fox Road, Laveen, Maricopa County, Arizona, United States, 85339

33 Floor 1 - Room



Max Dimensions: 12'10" x 19'10"
Calculated Area: 256 sq. ft
Included: Yes

Heated: Yes
Finished: Yes
Enclosed: Yes
Contiguous: Yes
Permitted: Yes
Wet space: No
Addition: No
Conversion: No