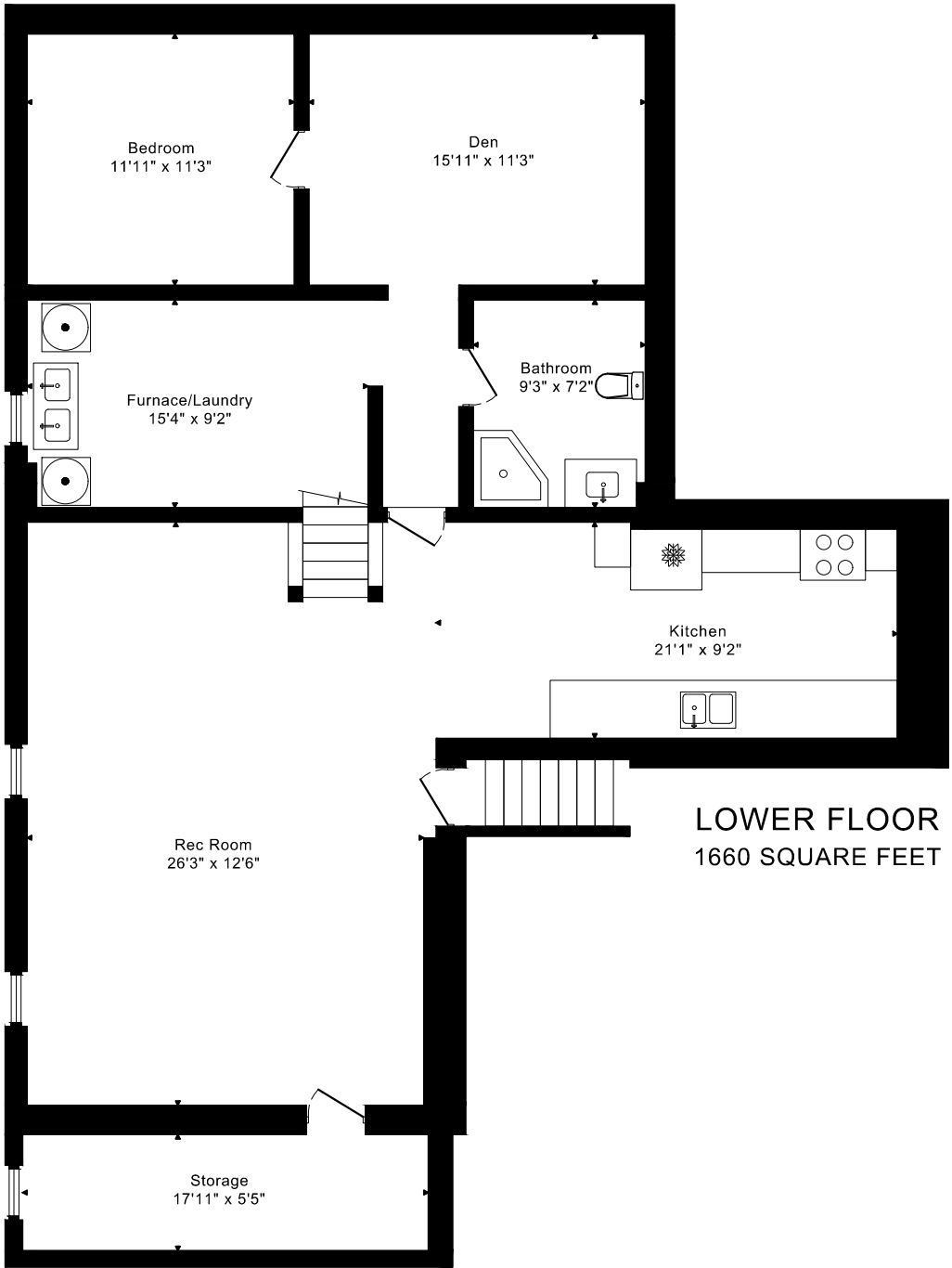
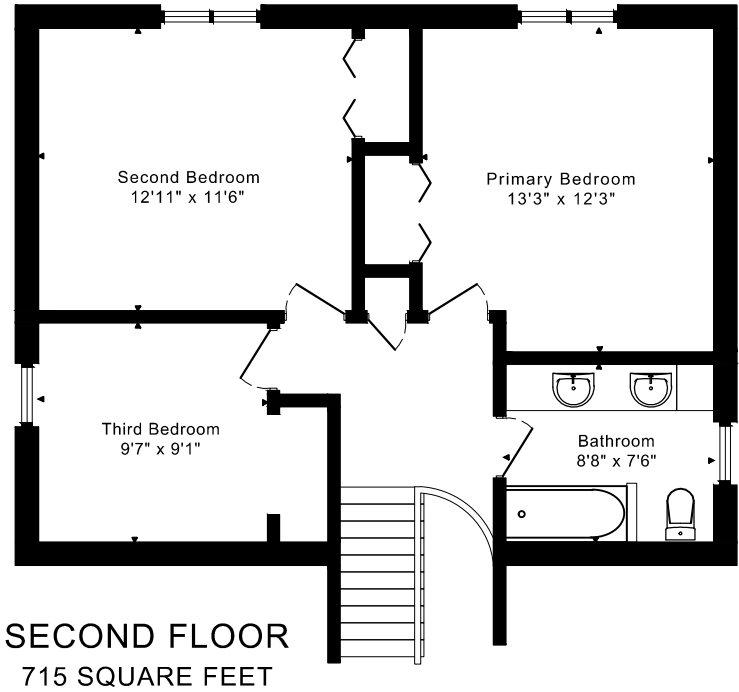
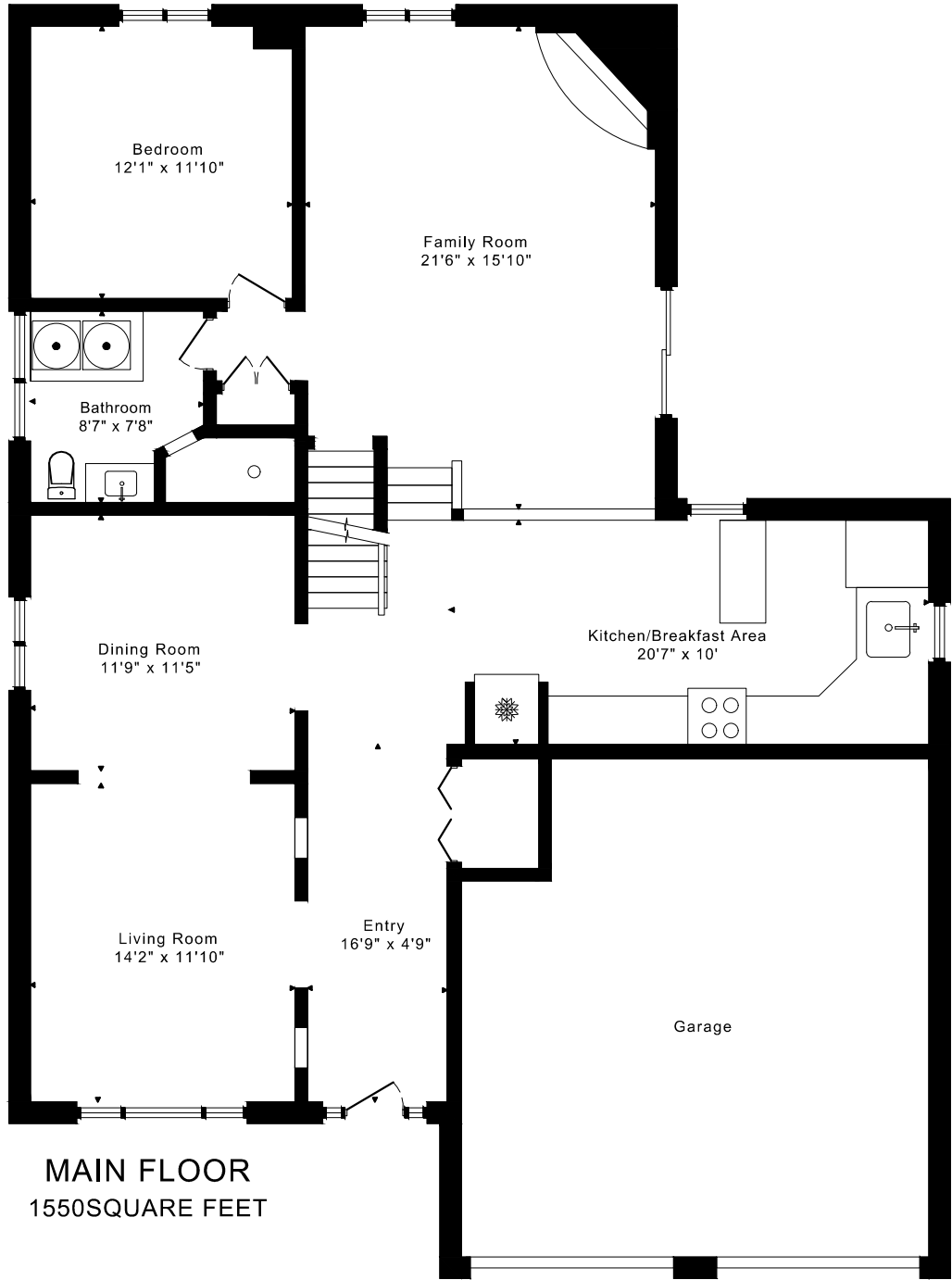
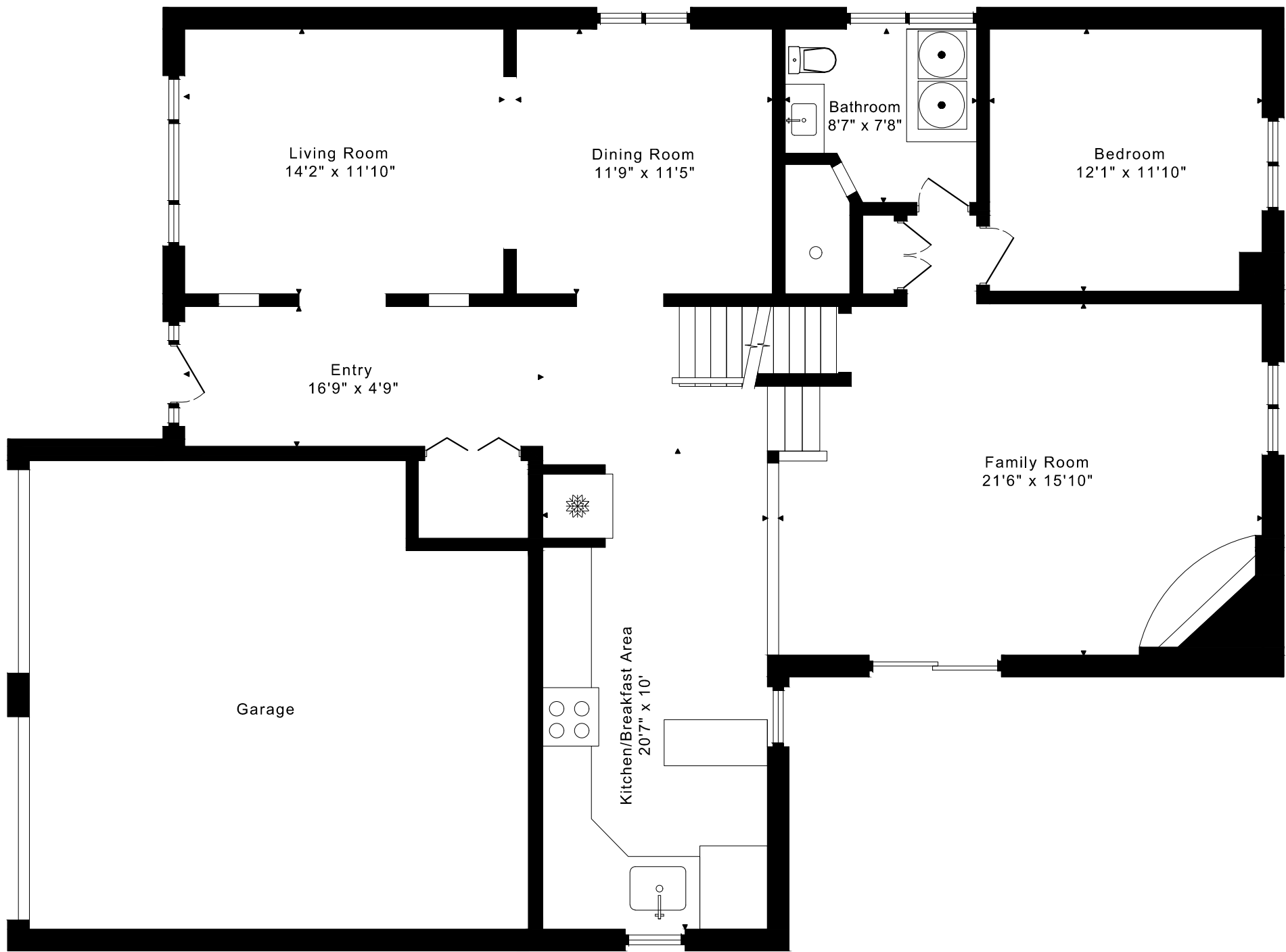


18 PAVAROTTI COURT
FLOOR PLANS



18 PAVAROTTI COURT FLOOR PLANS

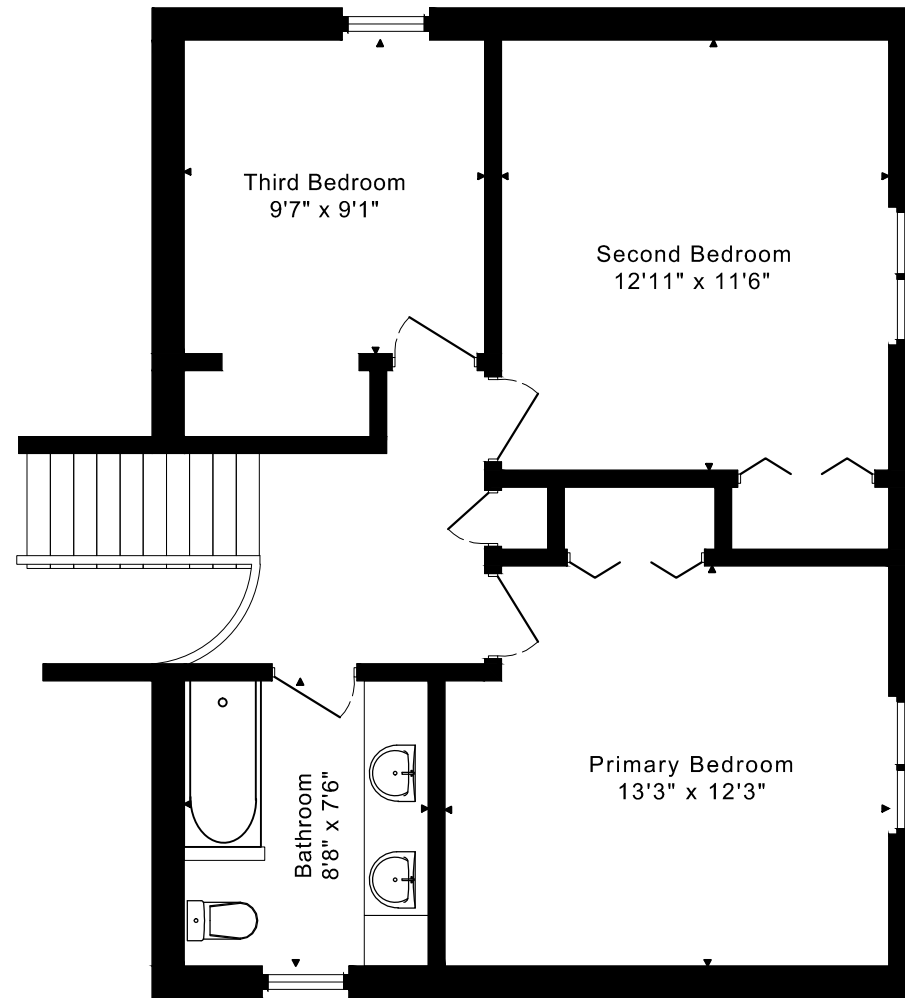
MAIN FLOOR 1550 SQUARE FEET



18 PAVAROTTI COURT

FLOOR PLANS

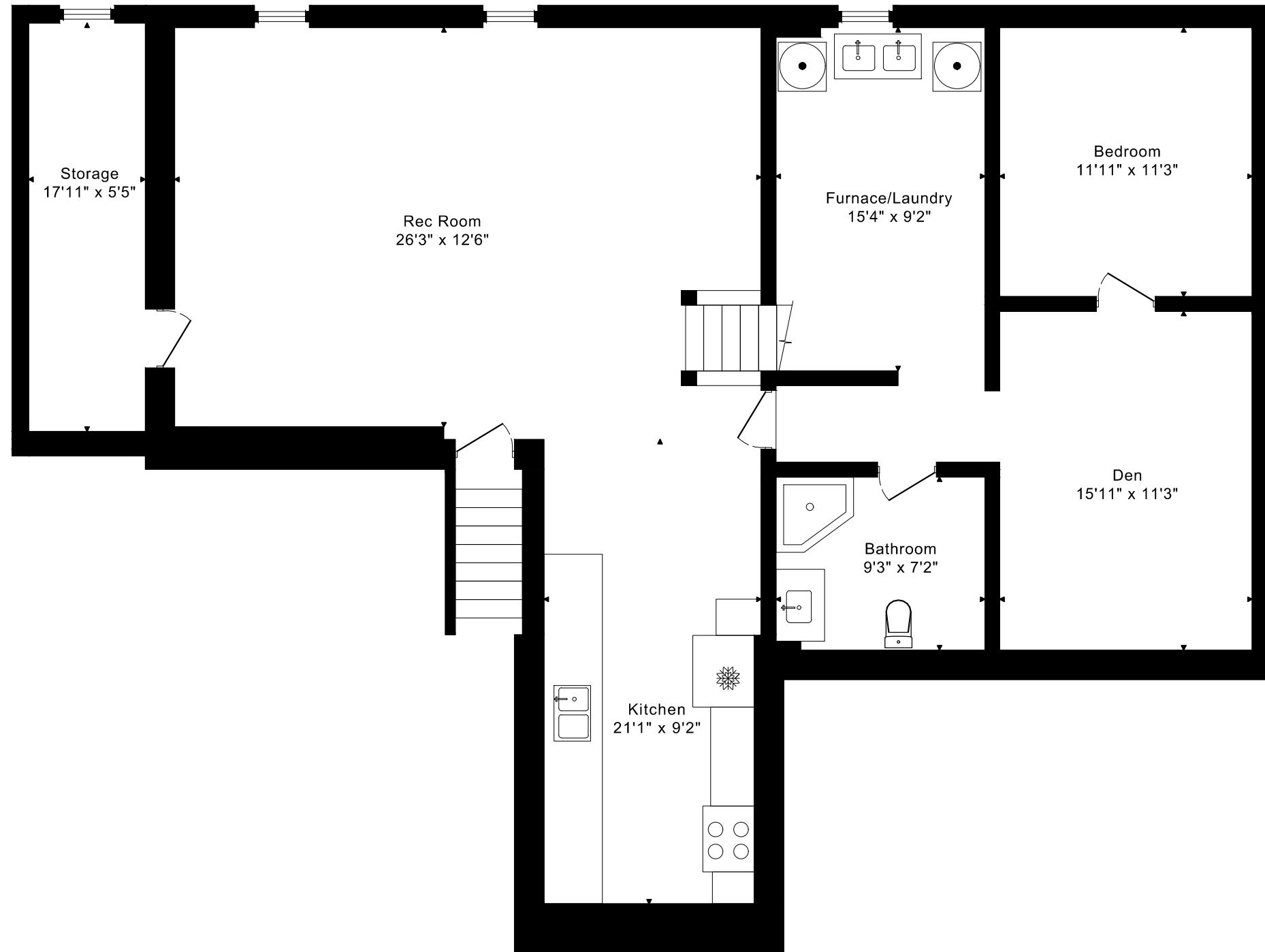
SECOND FLOOR 715 SQUARE FEET



18 PAVAROTTI COURT

FLOOR PLANS

LOWER FLOOR 1660 SQUARE FEET



18 PAVAROTTI COURT ROOM MEASUREMENTS

Floor	Room	Imperial						Metric [m]		
		Length		Width		Height		Length	Width	Height
		Feet	Inches	Feet	Inches	Feet	Inches			
Second	Primary Bedroom	13	3	12	3	8	1	4,04	3,73	2,46
	Second Bedroom	12	11	11	6	8	1	3,94	3,51	2,46
	Third Bedroom	9	7	9	1	8	1	2,92	2,77	2,46
	Bathroom	8	8	7	6	8	0	2,64	2,29	2,44
Main	Entry	16	9	4	9	8	0	5,11	1,45	2,44
	Living Room	14	2	11	10	8	0	4,32	3,61	2,44
	Dining Room	11	9	11	5	8	0	3,58	3,48	2,44
	Kitchen/Breakfast Area	20	7	10	0	8	0	6,27	3,05	2,44
	Family Room	21	6	15	10	8	0	6,55	4,83	2,44
	Bedroom	12	1	11	10	8	0	3,68	3,61	2,44
	Bathroom	8	7	7	8	8	0	2,62	2,34	2,44
Lower	Rec Room	26	3	12	6	7	10	8,00	3,81	2,39
	Kitchen	21	1	9	2	7	10	6,43	2,79	2,39
	Bedroom	11	11	11	3	6	7	3,63	3,43	2,01
	Den	15	11	11	3	6	7	4,85	3,43	2,01
	Furnace/Laundry	15	4	9	2	6	7	4,67	2,79	2,01
	Storage	17	11	5	5	7	5	5,46	1,65	2,26
	Bathroom	9	3	7	2	6	7	2,82	2,18	2,01

The following is a disclaimer regarding the approximate nature of dimensions and floor areas listed in this document:

Disclaimer:

The dimensions and floor areas listed in this document are provided as an estimate only and are intended to be used for illustration purposes only. These measurements are not necessarily meant to be a perfect representation of the actual space.

Notes regarding measurement methods and accuracy:

The utilization of laser measurement technology during the 3D model capturing process at the location provides an accurate representation of floor plans, with a typical margin of error of 3-5%. For the most accurate and official measurement data, it is advised to consult official documents such as MPAC records, builder's pre-construction plans, or data from certified measurement companies.

Exterior wall thickness is included in the calculation of the overall square footage and is considered as a component of the footprint. The wall thickness measurement is obtained onsite whenever possible, or estimated in the event where obtaining onsite measurements is not possible, such as in the case of condominium buildings where wall thickness may vary throughout the building.