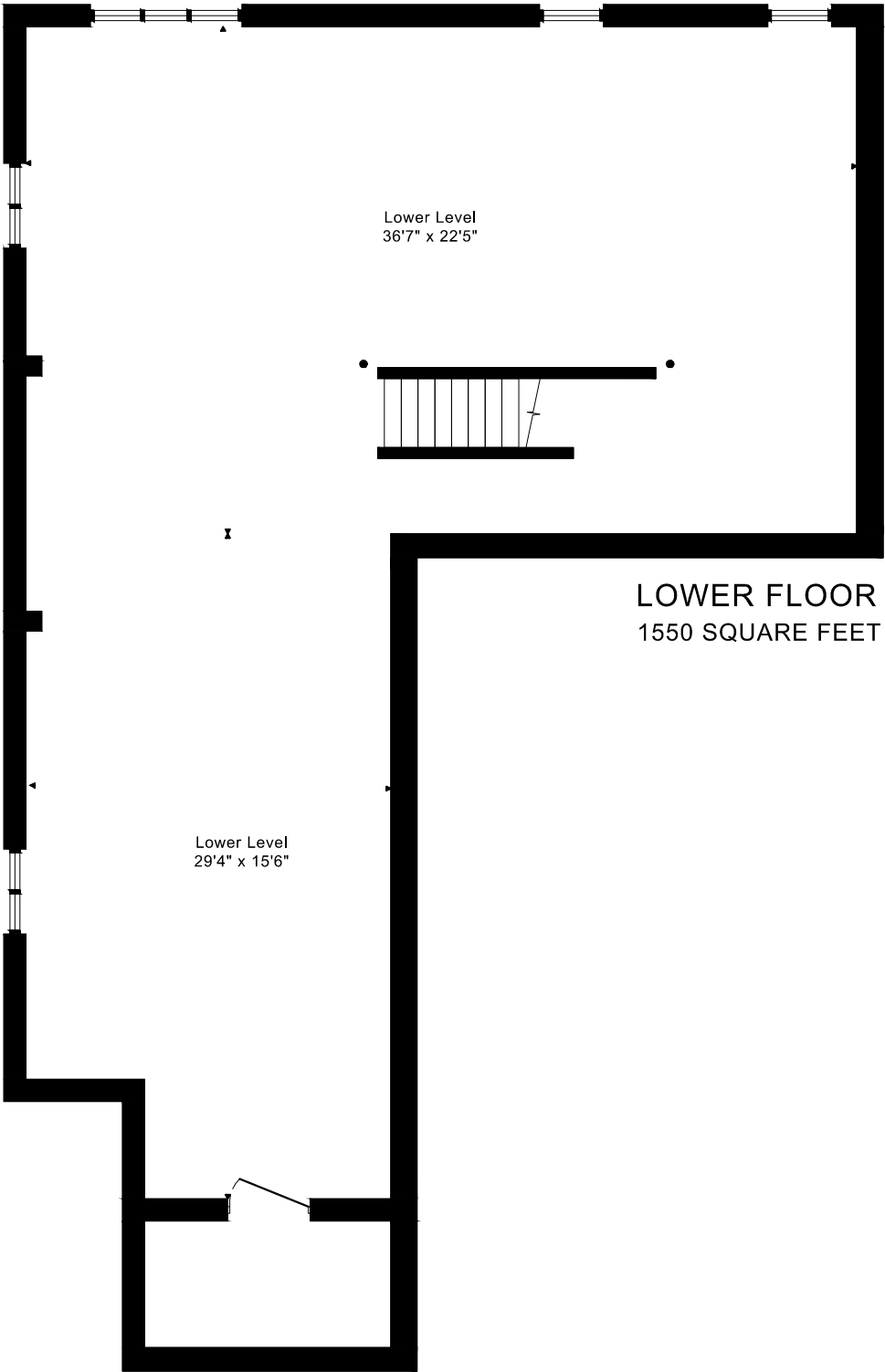
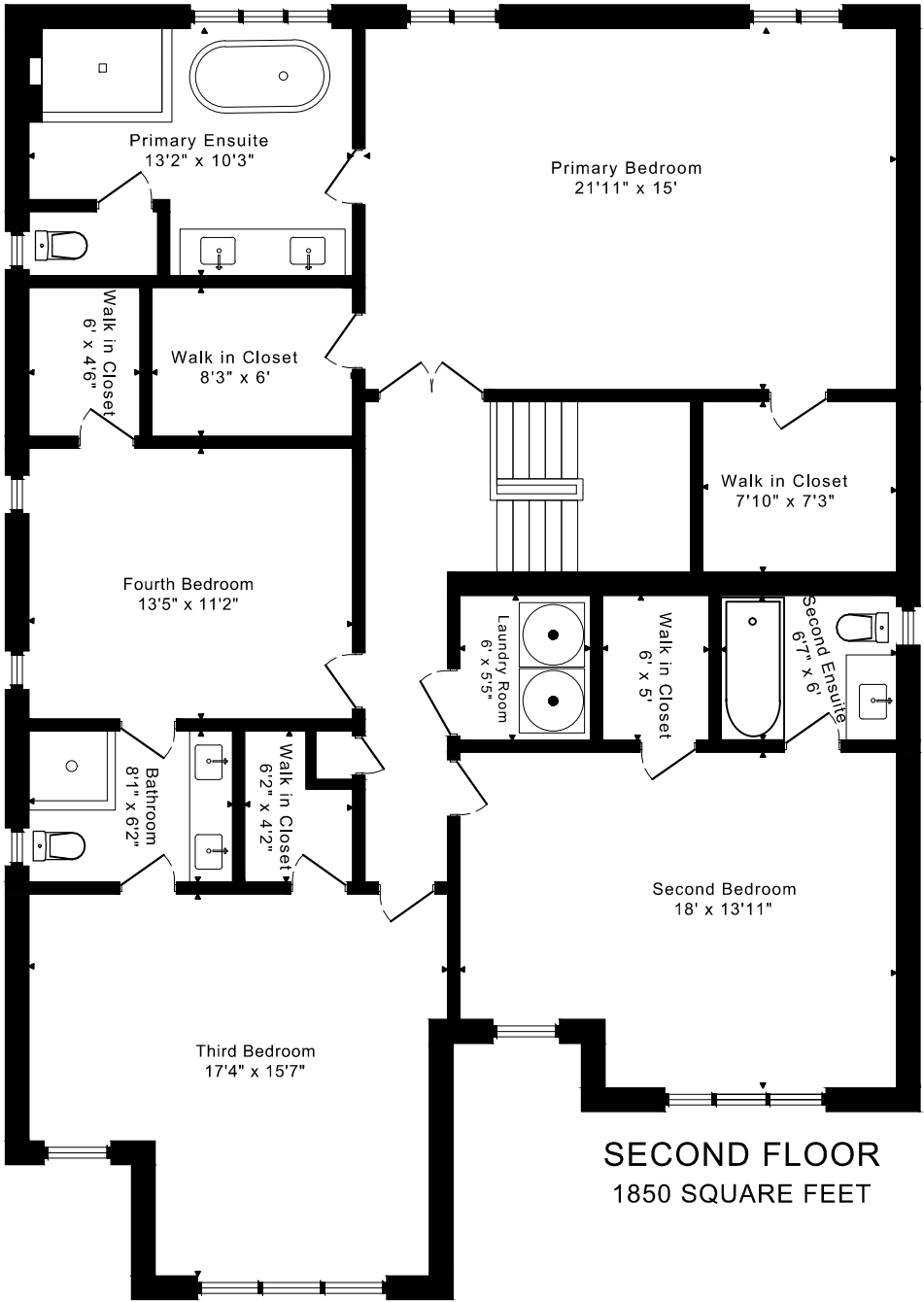
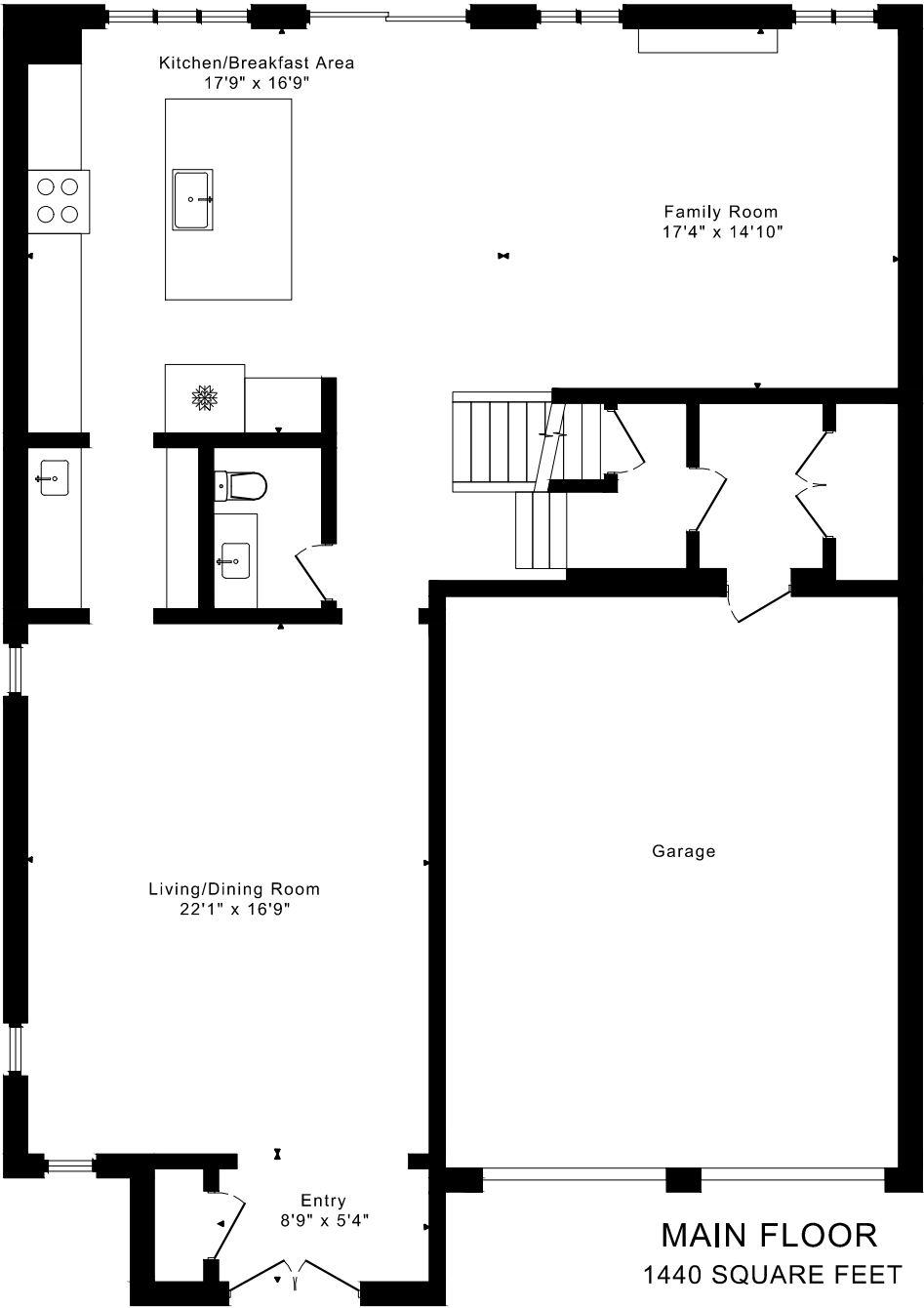
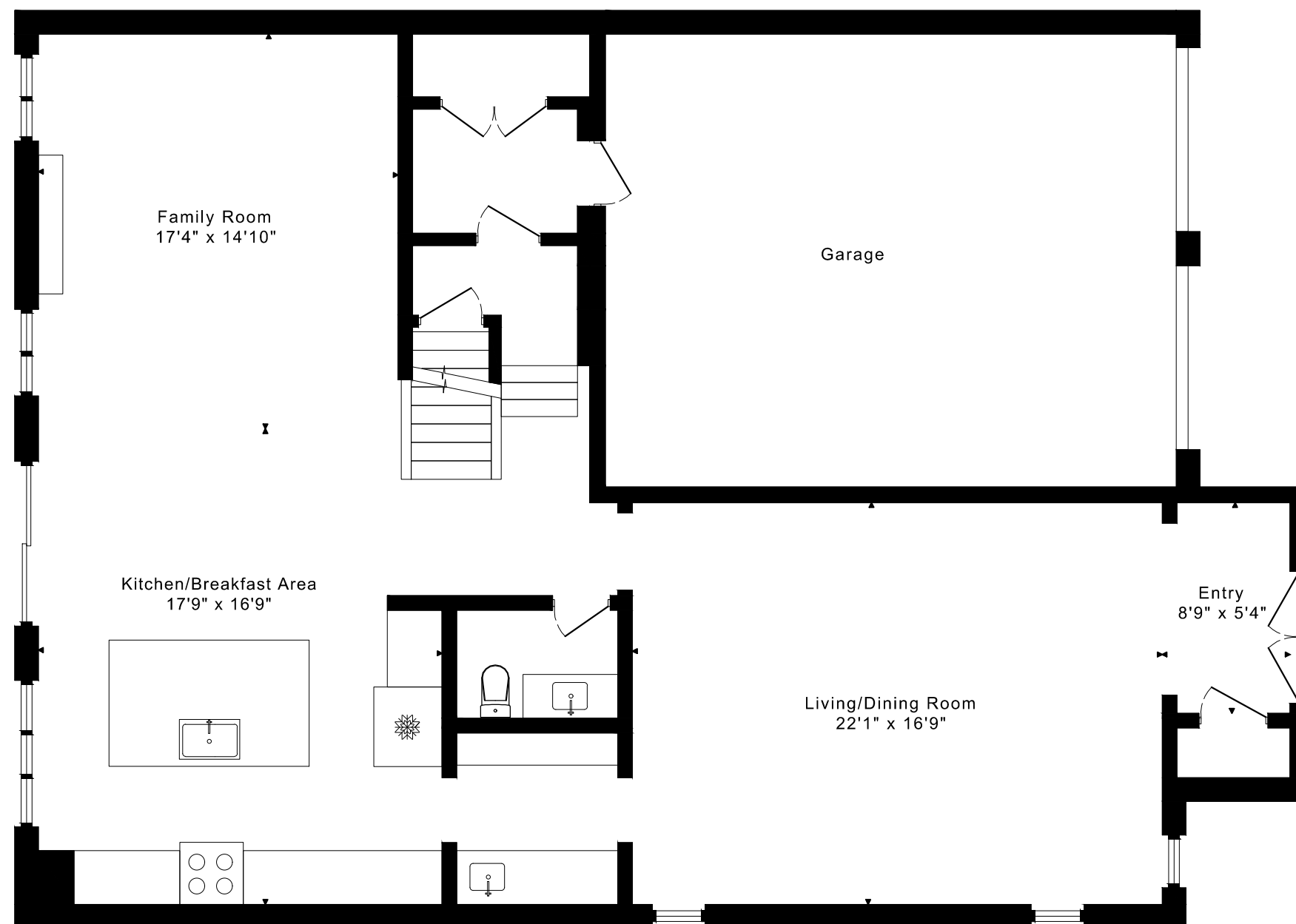


904 FOREST CREEK COURT
FLOOR PLANS

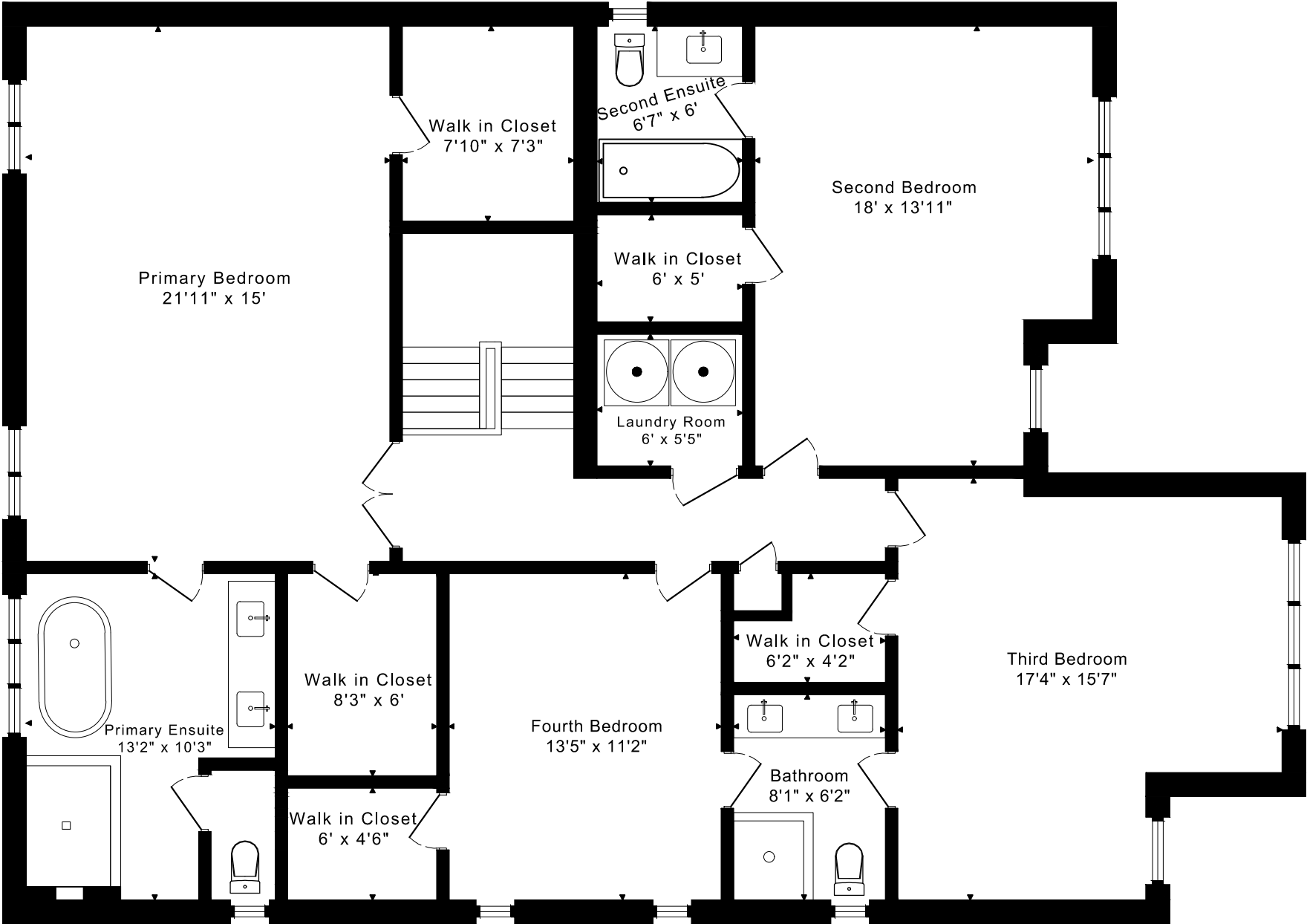


MAIN FLOOR 1440 SQUARE FEET

MAIN FLOOR 1440 SQUARE FEET

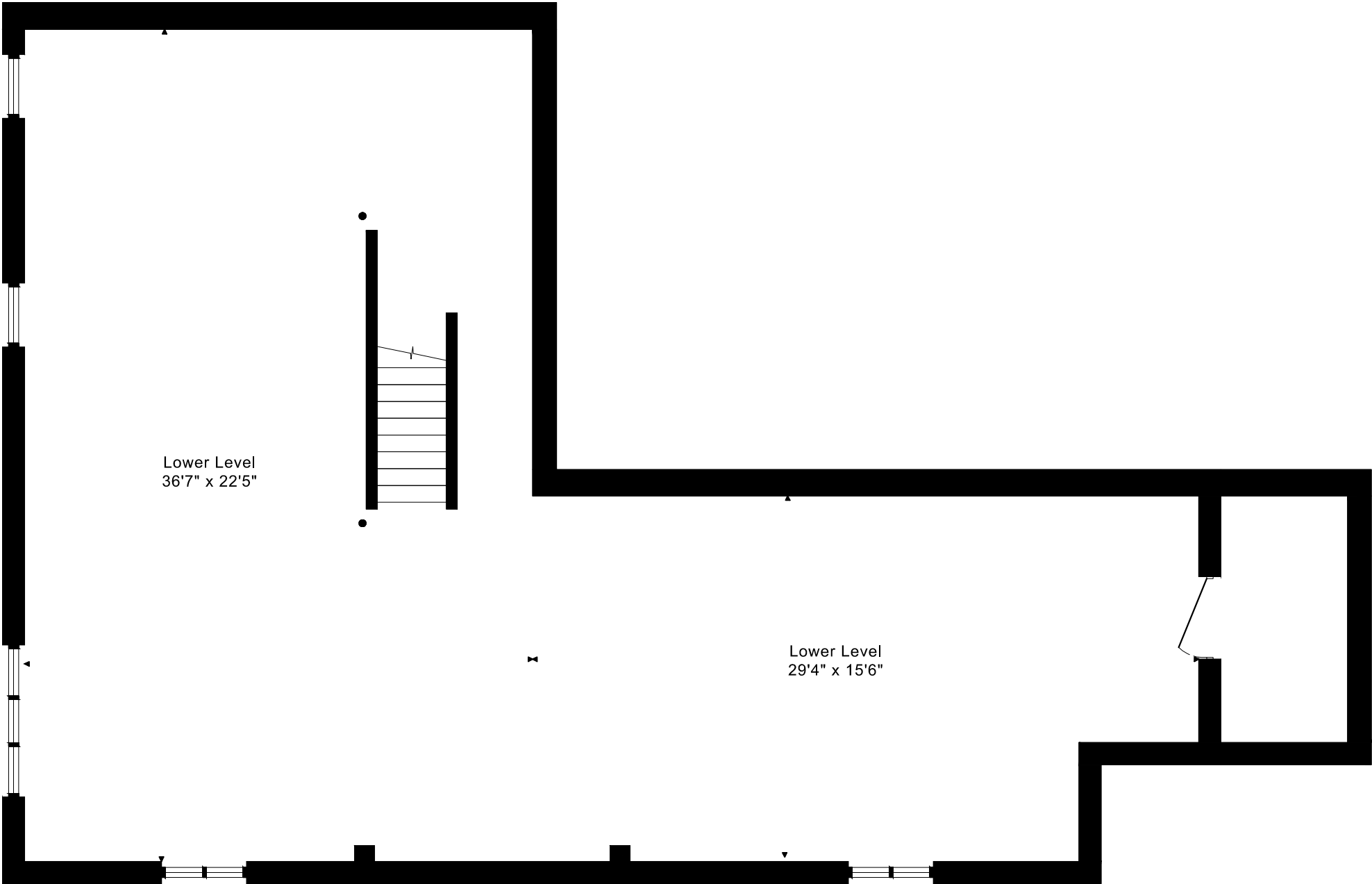


904 FOREST CREEK COURT
FLOOR PLANS
SECOND FLOOR 1850 SQUARE FEET



904 FOREST CREEK COURT
FLOOR PLANS

LOWER FLOOR 1550 SQUARE FEET



904 FOREST CREEK COURT ROOM MEASUREMENTS

Floor	Room	Imperial						Metric [m]		
		Length		Width		Height		Length	Width	Height
		Feet	Inches	Feet	Inches	Feet	Inches			
Second	Primary Bedroom	21	11	15	0	9	0	6,68	4,57	2,74
	Primary Ensuite	13	2	10	3	9	0	4,01	3,12	2,74
	Walk in Closet	7	10	7	3	9	0	2,39	2,21	2,74
	Walk in Closet	8	3	6	0	9	0	2,51	1,83	2,74
	Second Bedroom	18	0	13	11	9	0	5,49	4,24	2,74
	Second Ensuite	6	7	6	0	9	0	2,01	1,83	2,74
	Walk in Closet	6	0	5	0	9	0	1,83	1,52	2,74
	Third Bedroom	17	4	15	7	9	0	5,28	4,75	2,74
	Walk in Closet	6	2	4	2	9	0	1,88	1,27	2,74
	Fourth Bedroom	13	5	11	2	9	0	4,09	3,40	2,74
	Walk in Closet	6	0	4	6	9	0	1,83	1,37	2,74
	Bathroom	8	1	6	2	9	0	2,46	1,88	2,74
	Laundry Room	6	0	5	5	9	0	1,83	1,65	2,74
Main	Entry	8	9	5	4	9	1	2,67	1,63	2,77
	Living/Dining Room	22	1	16	9	9	1	6,73	5,11	2,77
	Kitchen/Breakfast Area	17	9	16	9	9	1	5,41	5,11	2,77
	Family Room	17	4	14	10	9	1	5,28	4,52	2,77
Lower	Lower Level	36	7	22	5	9	11	11,15	6,83	3,02
	Lower Level	29	4	15	6	9	11	8,94	4,72	3,02

The following is a disclaimer regarding the approximate nature of dimensions and floor areas listed in this document:

Disclaimer:

The dimensions and floor areas listed in this document are provided as an estimate only and are intended to be used for illustration purposes only. These measurements are not necessarily meant to be a perfect representation of the actual space.

Notes regarding measurement methods and accuracy:

The utilization of laser measurement technology during the 3D model capturing process at the location provides an accurate representation of floor plans, with a typical margin of error of 3-5%. For the most accurate and official measurement data, it is advised to consult official documents such as MPAC records, builder's pre-construction plans, or data from certified measurement companies.

Exterior wall thickness is included in the calculation of the overall square footage and is considered as a component of the footprint. The wall thickness measurement is obtained onsite whenever possible, or estimated in the event where obtaining onsite measurements is not possible, such as in the case of condominium buildings where wall thickness may vary throughout the building.