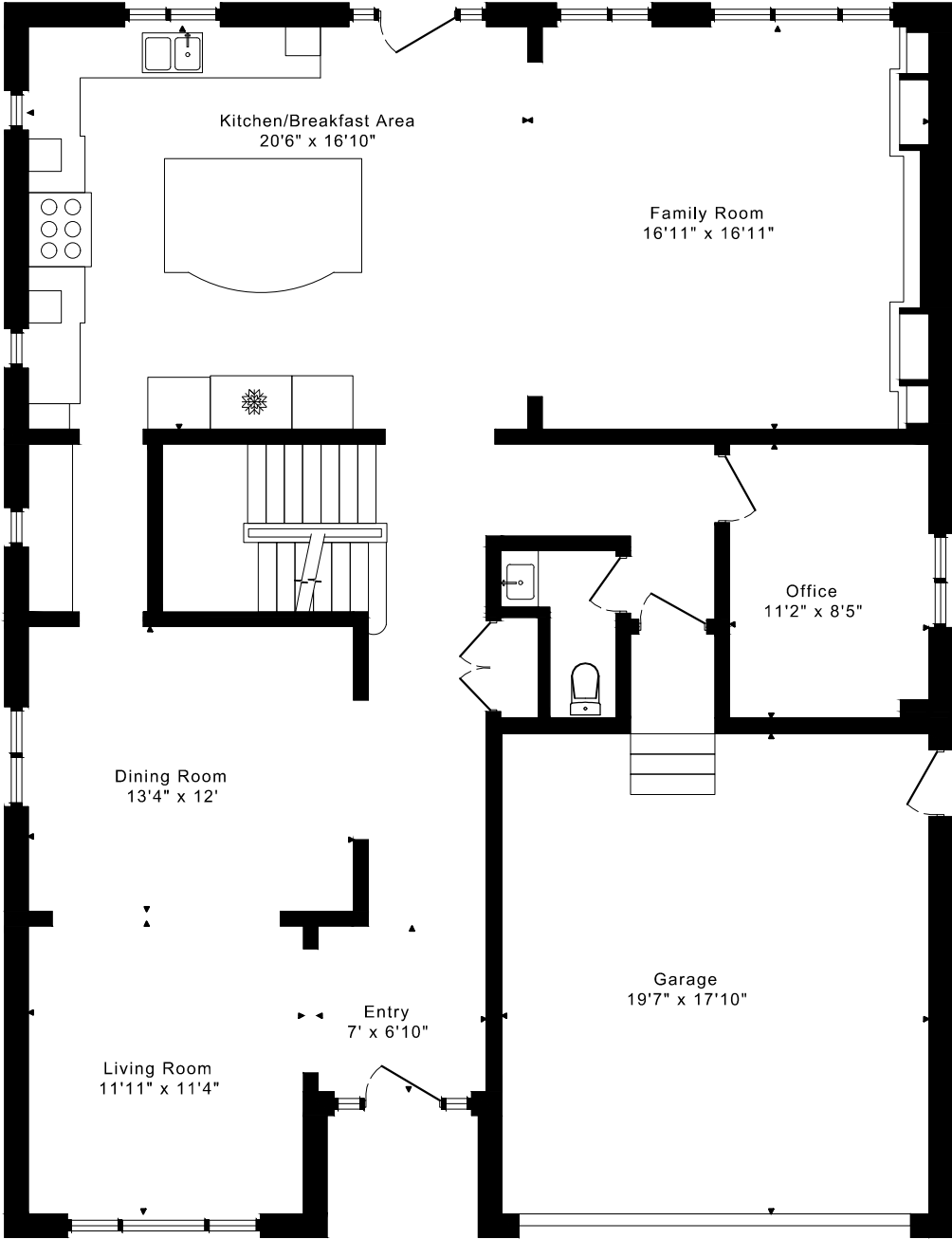
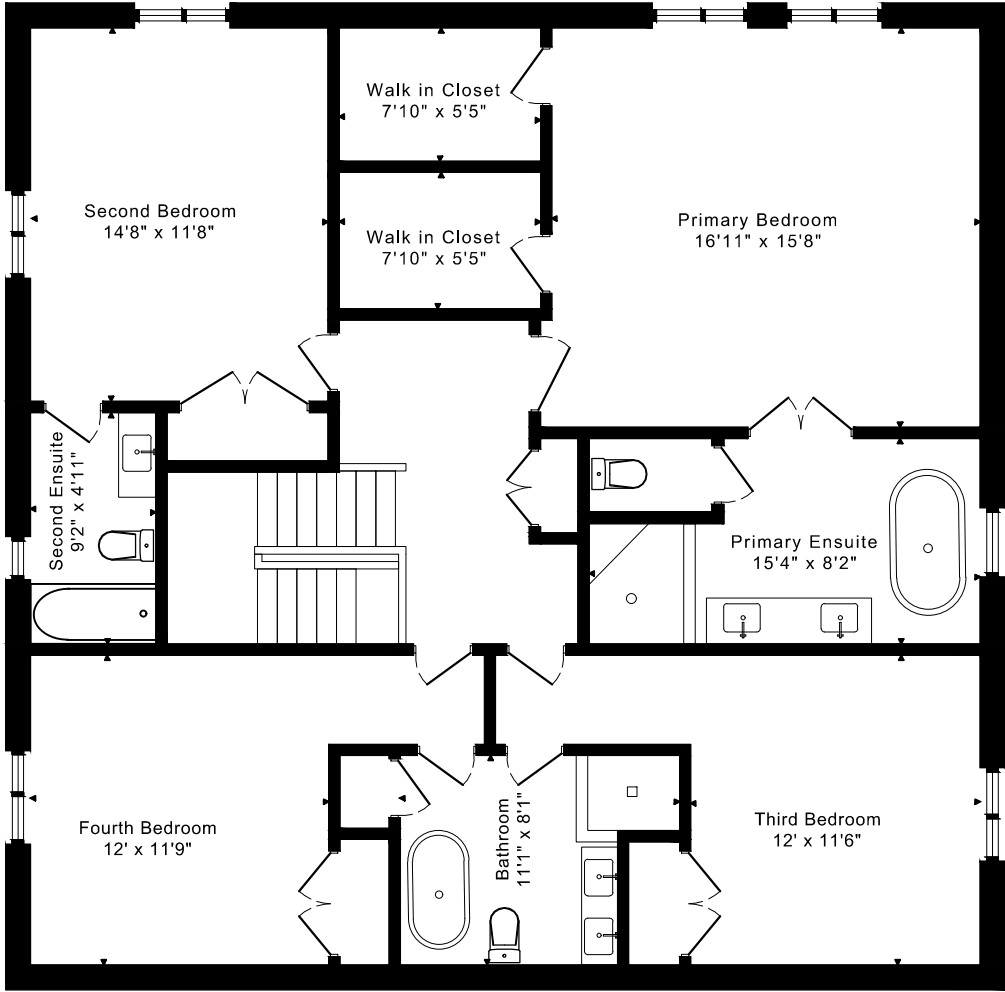
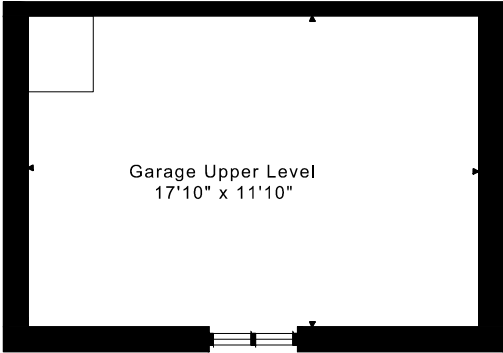


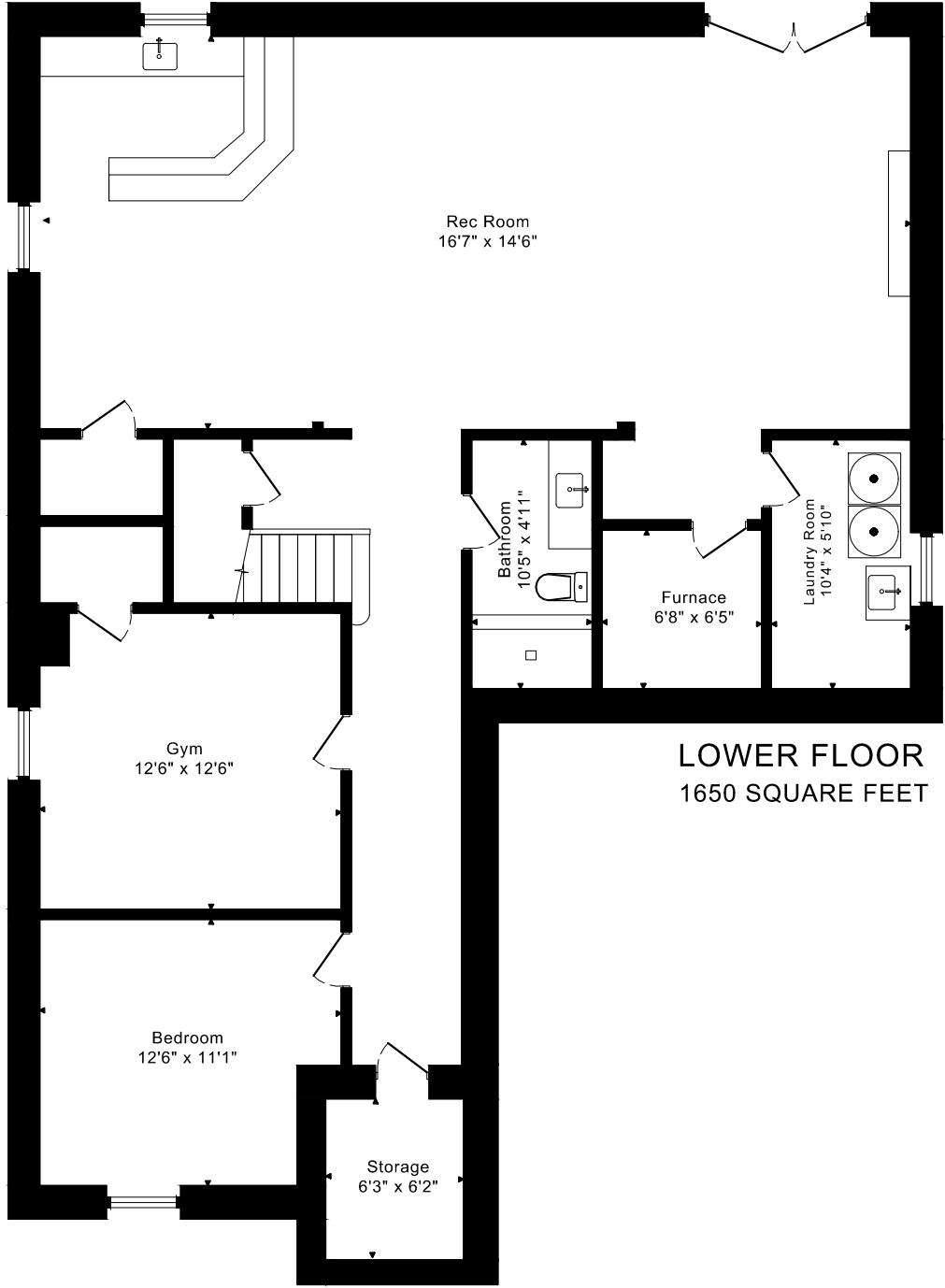
7 MAYDOLPH ROAD
FLOOR PLANS



MAIN FLOOR
1575 SQUARE FEET



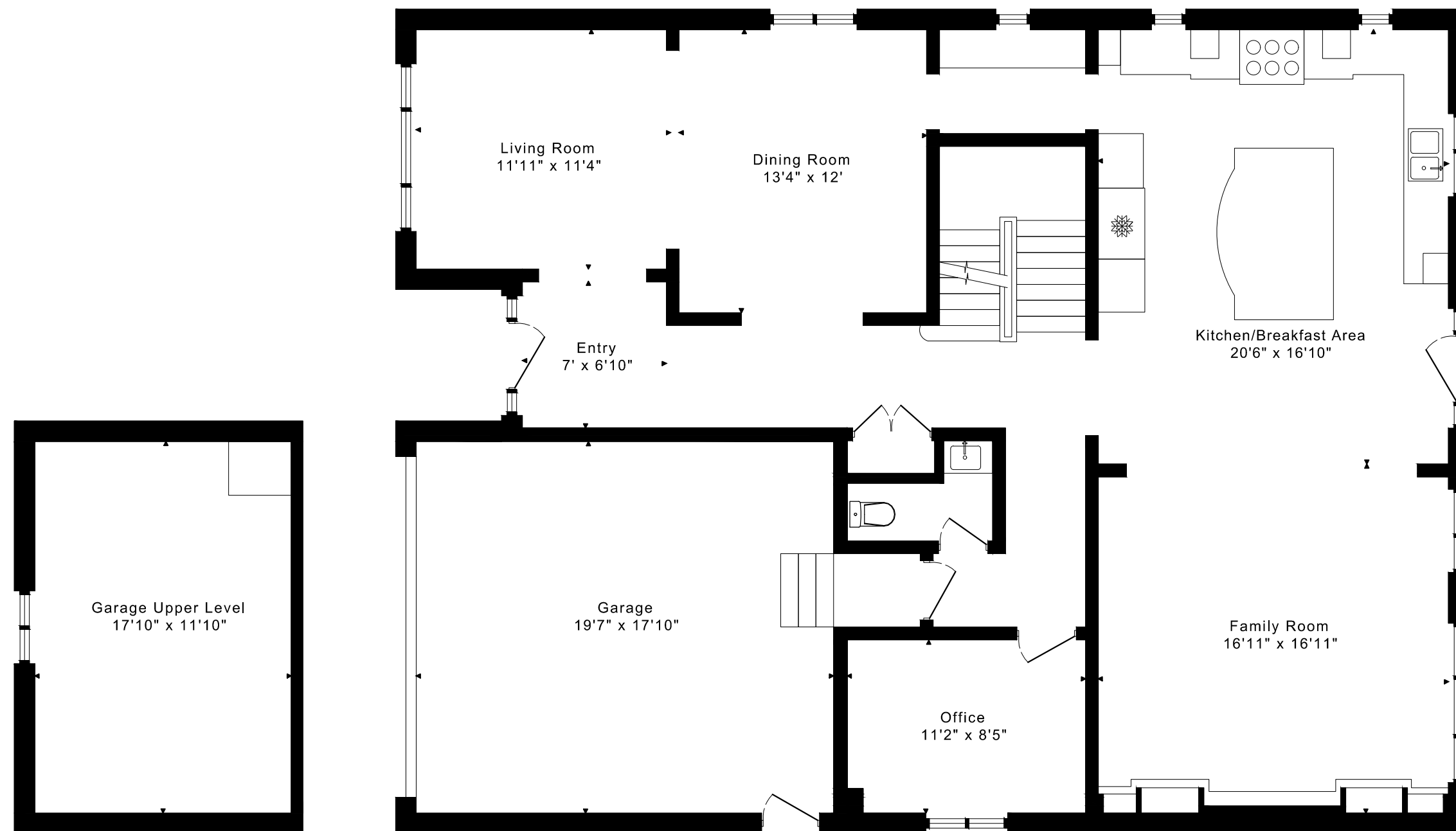
SECOND FLOOR
1530 SQUARE FEET



LOWER FLOOR
1650 SQUARE FEET

7 MAYDOLPH ROAD FLOOR PLANS

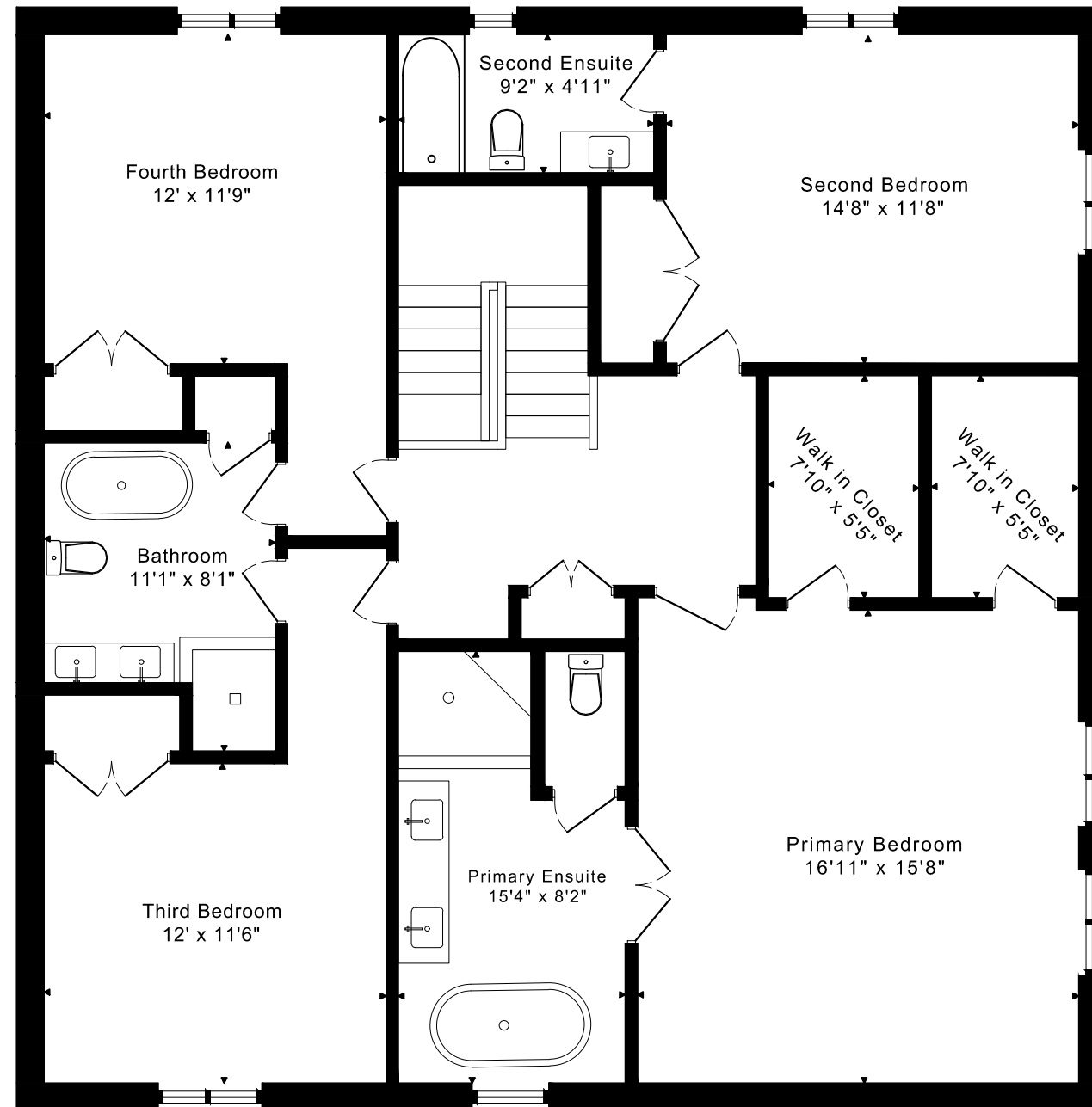
MAIN FLOOR 1575 SQUARE FEET



7 MAYDOLPH ROAD

FLOOR PLANS

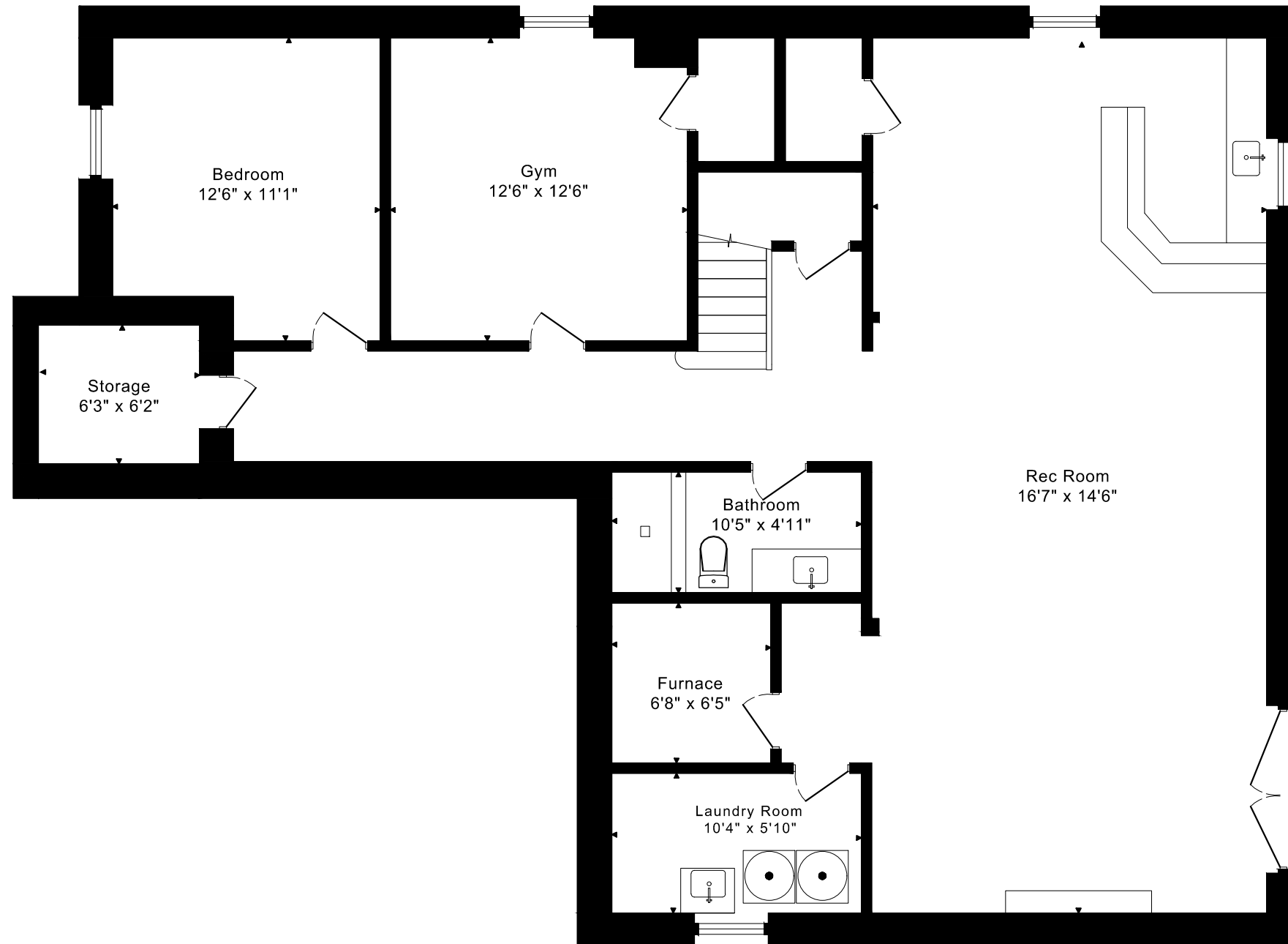
SECOND FLOOR 1530 SQUARE FEET



7 MAYDOLPH ROAD

FLOOR PLANS

LOWER FLOOR 1650 SQUARE FEET



7 MAYDOLPH ROAD ROOM MEASUREMENTS

Floor	Room	Imperial						Metric [m]		
		Length		Width		Height		Length	Width	Height
		Feet	Inches	Feet	Inches	Feet	Inches			
Second	Primary Bedroom	16	0	14	7	8	1	4,88	4,45	2,46
	Primary Ensuite	15	4	8	2	7	11	4,67	2,49	2,41
	Walk in Closet	7	10	5	5	8	1	2,39	1,65	2,46
	Walk in Closet	7	10	5	5	8	1	2,39	1,65	2,46
	Second Bedroom	14	8	11	8	8	1	4,47	3,56	2,46
	Second Ensuite	9	2	4	11	8	1	2,79	1,50	2,46
	Third Bedroom	12	0	11	6	8	1	3,66	3,51	2,46
	Fourth Bedroom	12	0	11	9	8	1	3,66	3,58	2,46
	Bathroom	11	1	8	1	7	11	3,38	2,46	2,41
Main	Entry	7	0	6	10	11	11	2,13	2,08	3,63
	Living Room	11	11	11	4	9	1	3,63	3,45	2,77
	Dining Room	13	4	12	0	9	1	4,06	3,66	2,77
	Kitchen/Breakfast Area	20	6	16	10	9	1	6,25	5,13	2,77
	Office	11	2	8	5	9	1	3,40	2,57	2,77
	Family Room	16	11	16	11	9	1	5,16	5,16	2,77
	Garage	19	7	17	10	9	1	5,97	5,44	2,77
	Garage Upper Level	17	10	11	10	5	10	5,44	3,61	1,78
Lower	Rec Room	36	5	16	6	8	5	11,10	5,03	2,57
	Gym	12	6	12	6	8	5	3,81	3,81	2,57
	Bedroom	12	6	11	1	8	5	3,81	3,38	2,57
	Storage	6	3	6	2	8	5	1,91	1,88	2,57
	Laundry Room	10	4	5	10	7	4	3,15	1,78	2,24
	Furnace	6	8	6	5	7	4	2,03	1,96	2,24
	Bathroom	10	5	4	11	7	4	3,18	1,50	2,24

The following is a disclaimer regarding the approximate nature of dimensions and floor areas listed in this document:

Disclaimer:

The dimensions and floor areas listed in this document are provided as an estimate only and are intended to be used for illustration purposes only. These measurements are not necessarily meant to be a perfect representation of the actual space.

Notes regarding measurement methods and accuracy:

The utilization of laser measurement technology during the 3D model capturing process at the location provides an accurate representation of floor plans, with a typical margin of error of 3-5%. For the most accurate and official measurement data, it is advised to consult official documents such as MPAC records, builder's pre-construction plans, or data from certified measurement companies.

Exterior wall thickness is included in the calculation of the overall square footage and is considered as a component of the footprint. The wall thickness measurement is obtained onsite whenever possible, or estimated in the event where obtaining onsite measurements is not possible, such as in the case of condominium buildings where wall thickness may vary throughout the building.