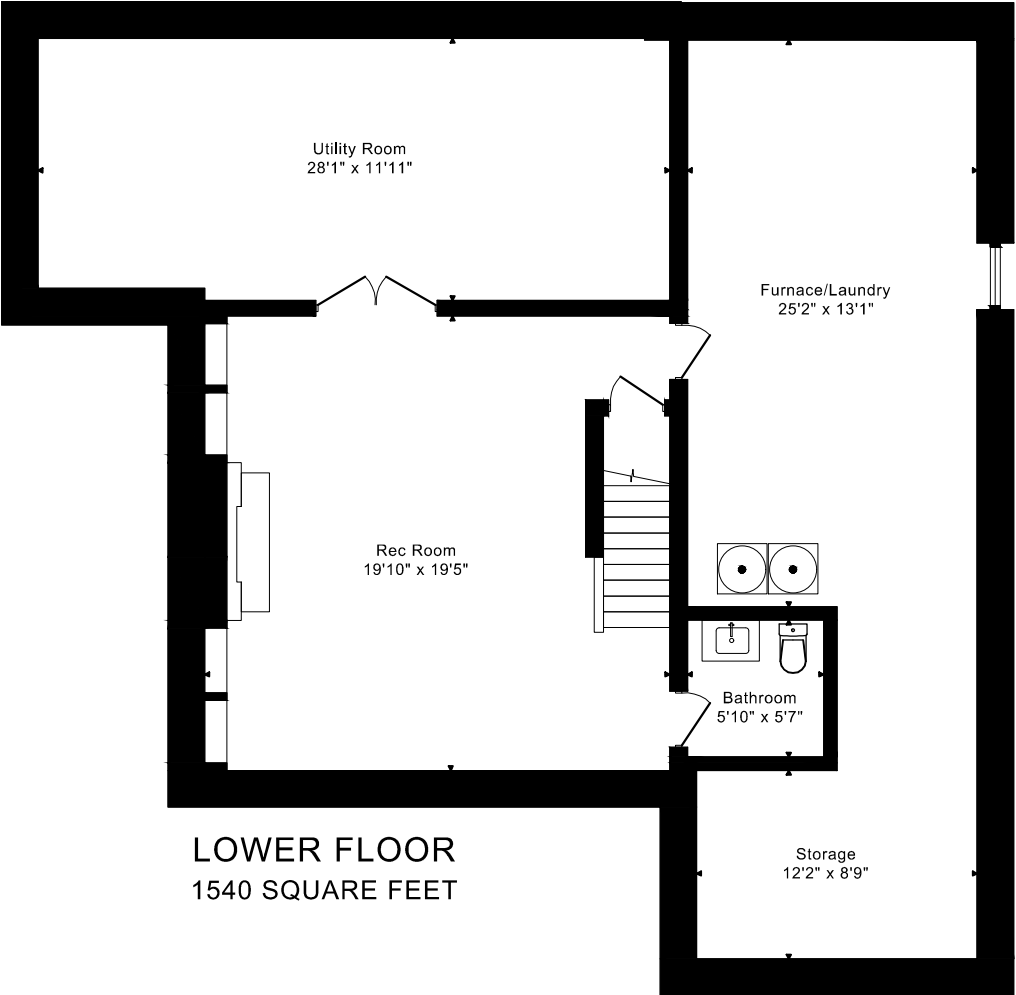
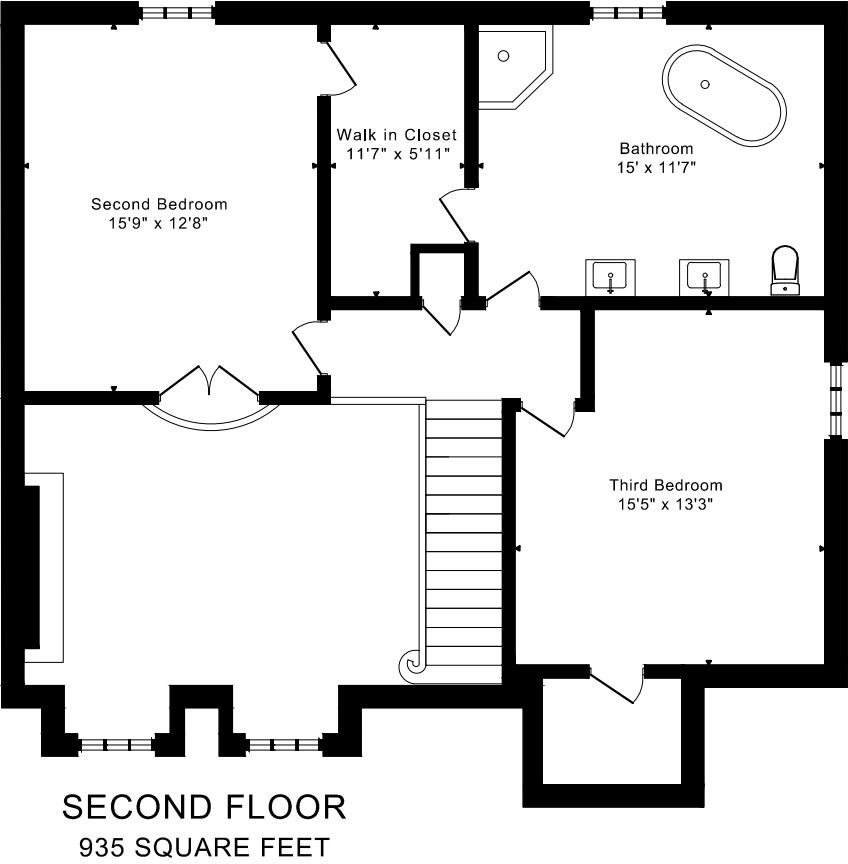
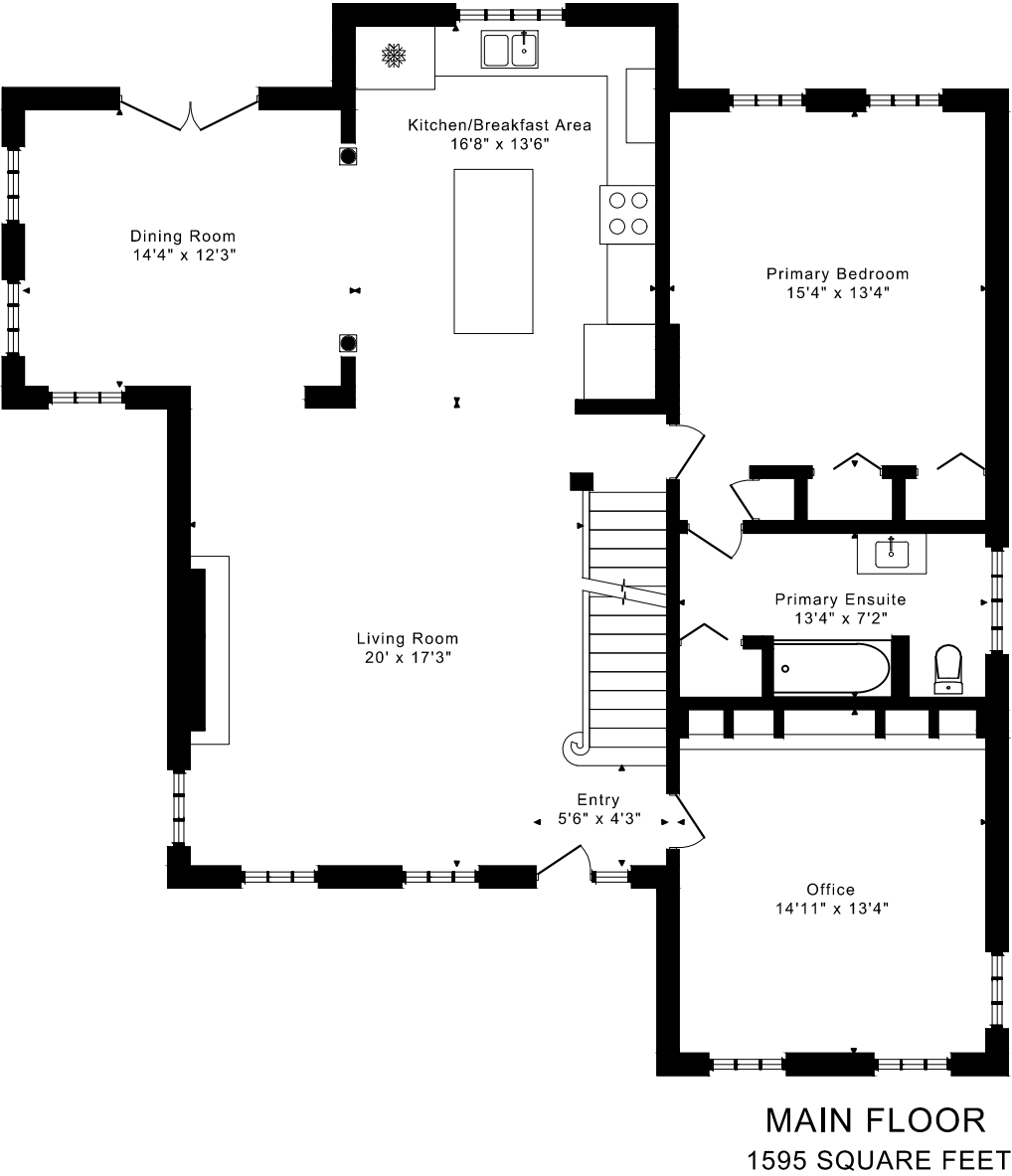
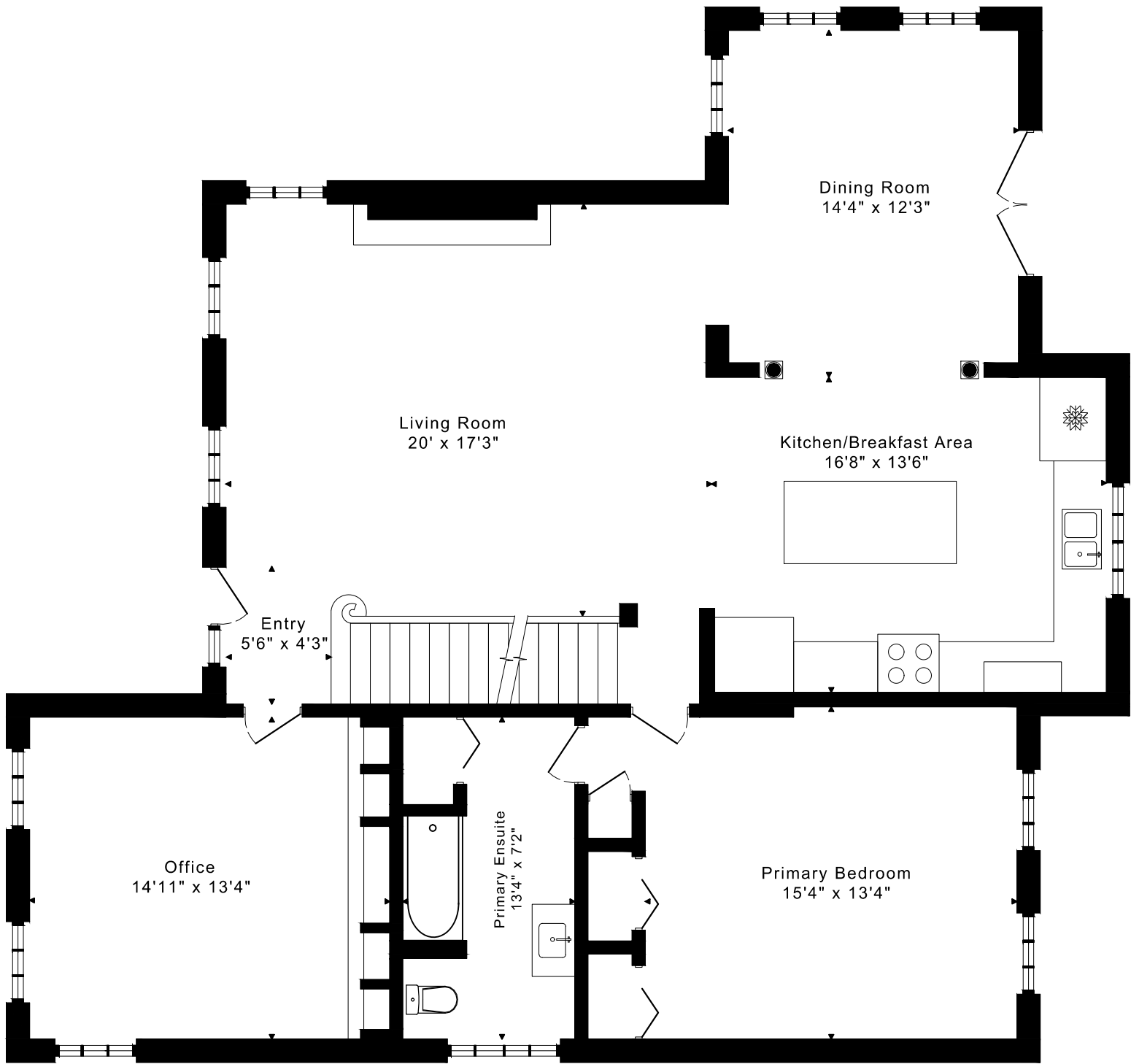


23 MAC TAVESH STREET  
FLOOR PLANS



23 MAC TAVESH STREET  
FLOOR PLANS

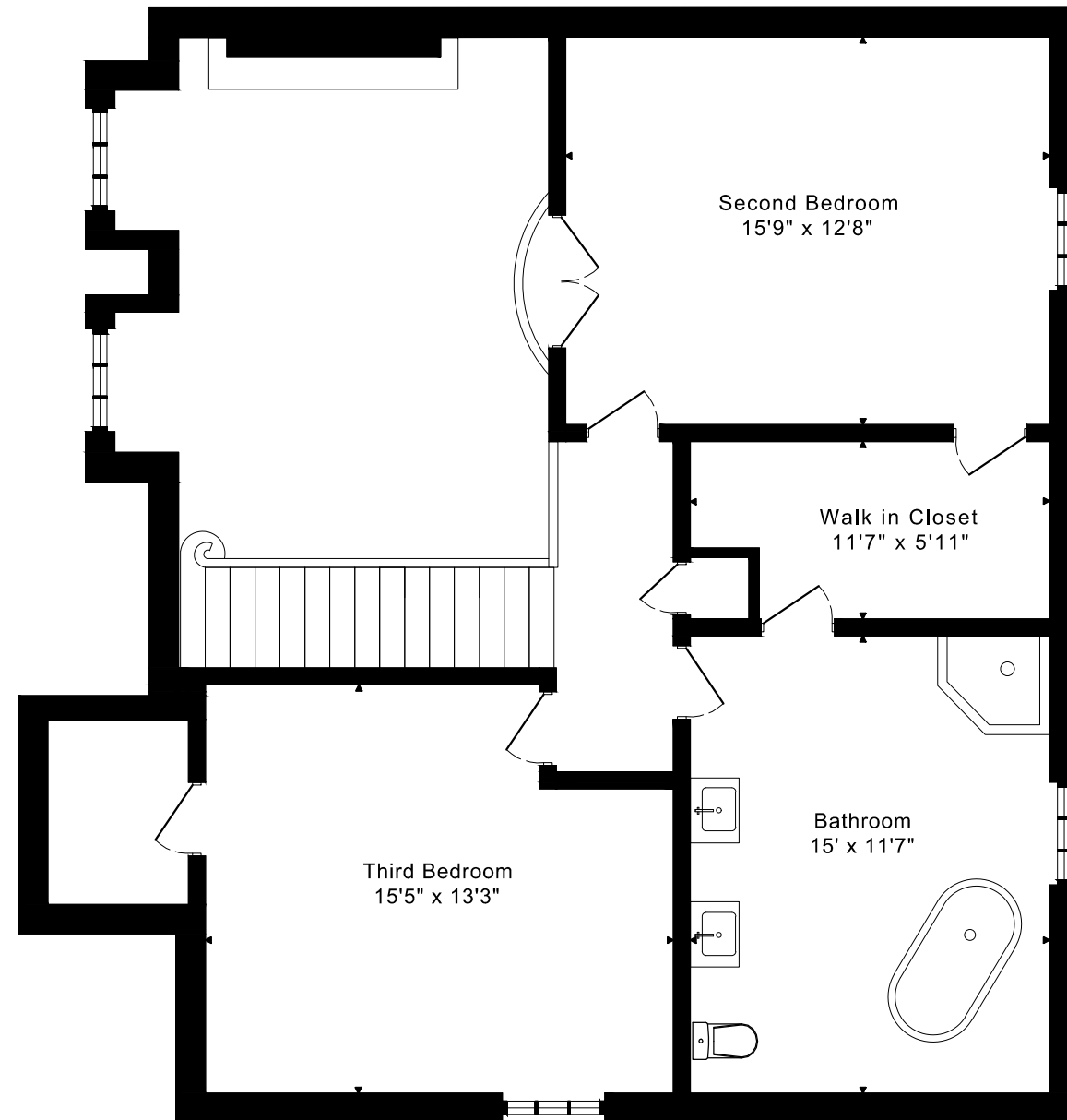
MAIN FLOOR 1595 SQUARE FEET



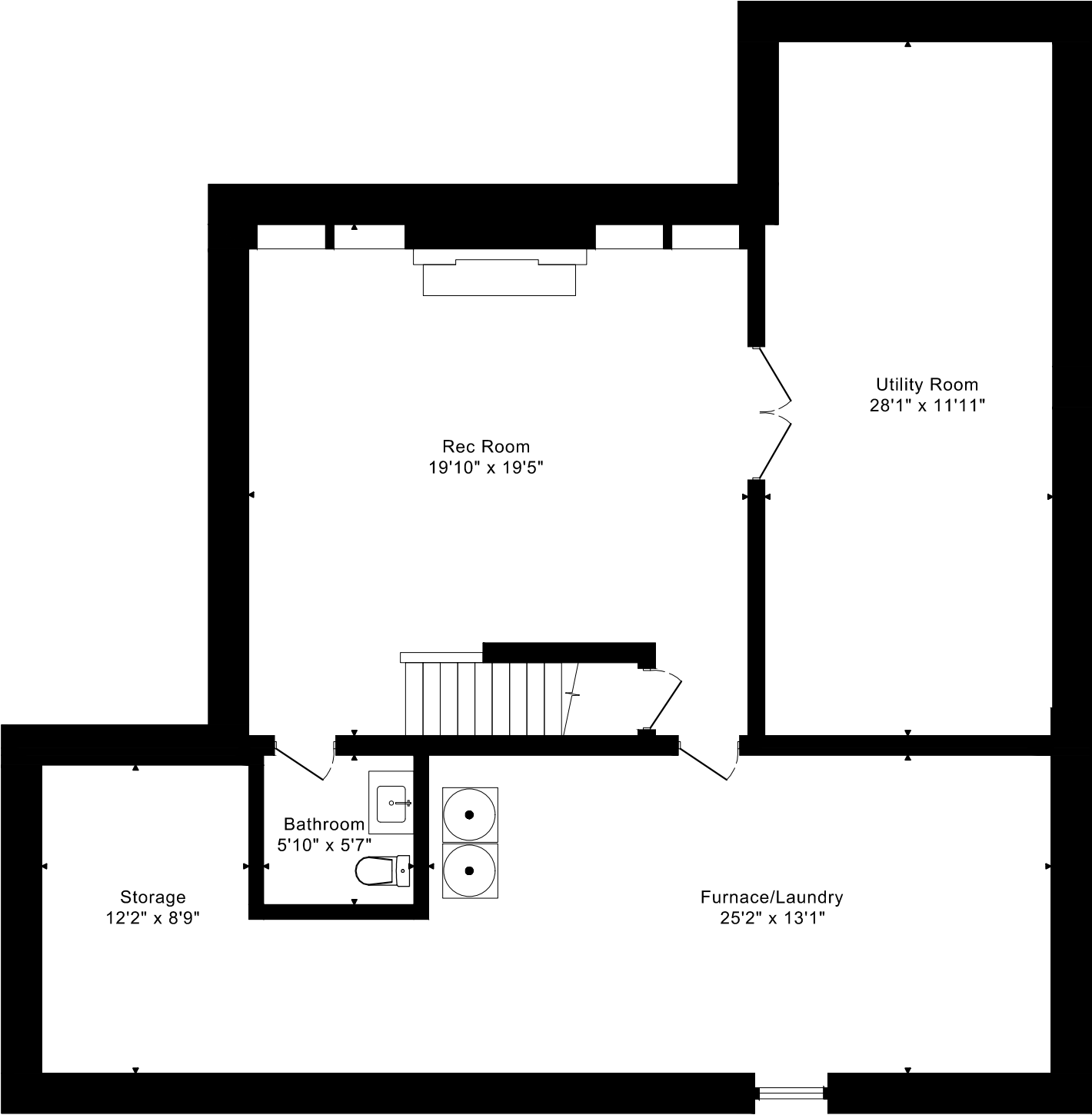
# 23 MAC TAVESH STREET

## FLOOR PLANS

SECOND FLOOR 935 SQUARE FEET



23 MAC TAVESH STREET  
FLOOR PLANS  
LOWER FLOOR 1540 SQUARE FEET



23 MAC TAVESH STREET ROOM MEASUREMENTS

Floor	Room	Imperial						Metric [m]		
		Length		Width		Height		Length	Width	Height
		Feet	Inches	Feet	Inches	Feet	Inches			
Second	Second Bedroom	15	9	12	8	8	1	4,80	3,86	2,46
	Walk in Closet	11	7	5	11	8	1	3,53	1,80	2,46
	Third Bedroom	15	5	13	3	8	1	4,70	4,04	2,46
	Bathroom	15	0	11	7	8	1	4,57	3,53	2,46
Main	Entry	5	6	4	3	9	9	1,68	1,30	2,97
	Living Room	20	0	17	3	13	1	6,10	5,26	3,99
	Dining Room	14	4	12	3	8	4	4,37	3,73	2,54
	Kitchen/Breakfast Area	16	8	13	6	8	4	5,08	4,11	2,54
	Office	14	11	13	4	8	4	4,55	4,06	2,54
	Primary Bedroom	15	4	13	4	8	4	4,67	4,06	2,54
	Primary Ensuite	13	4	7	2	8	4	4,06	2,18	2,54
Lower	Rec Room	19	10	19	5	7	4	6,05	5,92	2,24
	Utility Room	28	1	11	11	8	11	8,56	3,63	2,72
	Storage	12	2	8	9	8	11	3,71	2,67	2,72
	Furnace/Laundry	25	2	13	10	8	11	7,67	4,22	2,72
	Bathroom	5	10	5	7	7	4	1,78	1,70	2,24

The following is a disclaimer regarding the approximate nature of dimensions and floor areas listed in this document:

---

**Disclaimer:**

The dimensions and floor areas listed in this document are provided as an estimate only and are intended to be used for illustration purposes only. These measurements are not necessarily meant to be a perfect representation of the actual space.

**Notes regarding measurement methods and accuracy:**

The utilization of laser measurement technology during the 3D model capturing process at the location provides an accurate representation of floor plans, with a typical margin of error of 3-5%. For the most accurate and official measurement data, it is advised to consult official documents such as MPAC records, builder's pre-construction plans, or data from certified measurement companies.

Exterior wall thickness is included in the calculation of the overall square footage and is considered as a component of the footprint. The wall thickness measurement is obtained onsite whenever possible, or estimated in the event where obtaining onsite measurements is not possible, such as in the case of condominium buildings where wall thickness may vary throughout the building.