

Home report

203 Mill Crossing Court, Greenbriar, Harmans, Anne Arundel County, Maryland, United States, 21077



Total Area: 2326 sq. ft

Floor 1: 345 sq. ft, Floor 2: 143 sq. ft, Floor 3: 919 sq. ft, Floor 4: 919 sq. ft

Excluded: Utility 34 sq. ft, Patio 181 sq. ft, Garage 352 sq. ft, Deck 181 sq. ft, Walls: 229 sq. ft

Property summary

 **4** Floors

 **3** Bedrooms

 **3** Bathrooms

Home report

**203 Mill Crossing Court, Greenbriar, Harmans, Anne Arundel
County, Maryland, United States, 21077**

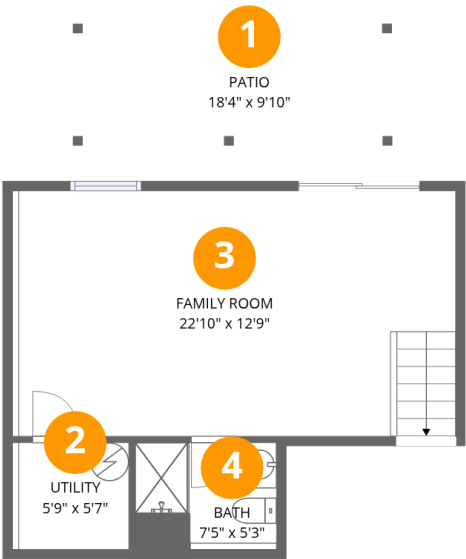


1
Half baths



1
Garages

203 Mill Crossing Court, Greenbriar, Harmans, Anne Arundel County, Maryland, United States, 21077

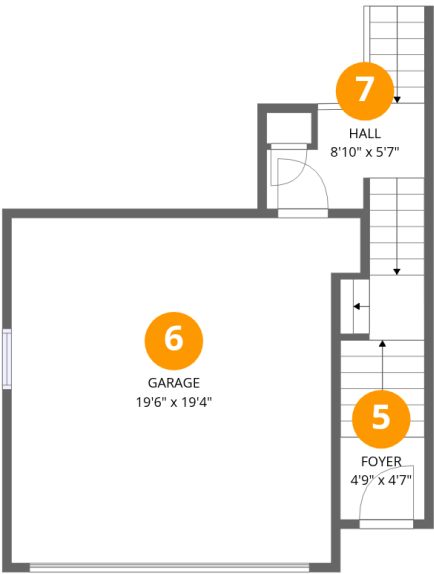


Room dimensions

Floor 1 Total:345sqft Excluded: 215sqft

#		Max Dimensions	sqft	Included
1	Patio	18'4" x 9'10"	181 sq. ft	No
2	Utility	5'9" x 5'7"	34 sq. ft	No
3	Family Room	22'10" x 12'9"	297 sq. ft	Yes
4	Bath	7'5" x 5'3"	41 sq. ft	Yes

203 Mill Crossing Court, Greenbriar, Harmans, Anne Arundel County, Maryland, United States, 21077



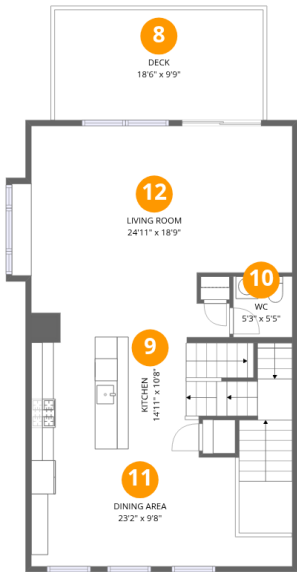
Room dimensions

Floor 2 Total:143sqft Excluded: 352sqft

#		Max Dimensions	sqft	Included
5	Foyer	4'9" x 4'7"	48 sq. ft	Yes
6	Garage	19'6" x 19'4"	352 sq. ft	No
7	Hall	8'10" x 5'7"	88 sq. ft	Yes

Home report

203 Mill Crossing Court, Greenbriar, Harmans, Anne Arundel County, Maryland, United States, 21077

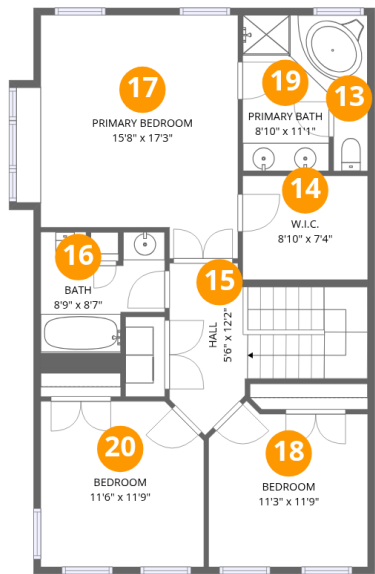


Room dimensions

Floor 3 Total:919sqft Excluded: 181sqft

#		Max Dimensions	sqft	Included
8	Deck	18'6" x 9'9"	181 sq. ft	No
9	Kitchen	14'11" x 10'8"	261 sq. ft	Yes
10	WC	5'3" x 5'5"	28 sq. ft	Yes
11	Dining Area	23'2" x 9'8"	189 sq. ft	Yes
12	Living Room	24'11" x 18'9"	403 sq. ft	Yes

203 Mill Crossing Court, Greenbriar, Harmans, Anne Arundel County, Maryland, United States, 21077



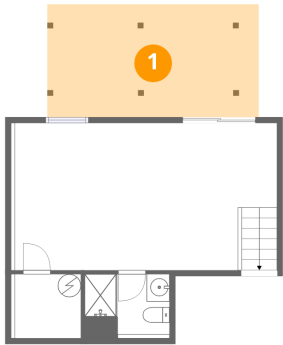
Room dimensions

Floor 4 Total:919sqft Excluded: 0sqft

#		Max Dimensions	sqft	Included
13	WC	2'5" x 5'2"	12 sq. ft	Yes
14	W.I.C.	8'10" x 7'4"	65 sq. ft	Yes
15	Hall	5'6" x 12'2"	114 sq. ft	Yes
16	Bath	8'9" x 8'7"	66 sq. ft	Yes
17	Primary Bedroom	15'8" x 17'3"	235 sq. ft	Yes
18	Bedroom	11'3" x 11'9"	121 sq. ft	Yes
19	Primary Bath	8'10" x 11'1"	83 sq. ft	Yes
20	Bedroom	11'6" x 11'9"	132 sq. ft	Yes

203 Mill Crossing Court, Greenbriar, Harmans, Anne Arundel County, Maryland, United States, 21077

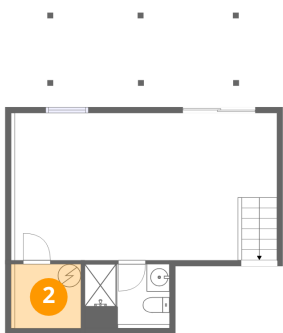
1 Floor 1 - Patio



Max Dimensions: 18'4" x 9'10"
Calculated Area: 181 sq. ft
Included: No

Heated: No
Finished: Yes
Enclosed: No
Contiguous: Yes
Permitted: Yes
Wet space: No
Addition: No
Conversion: No

2 Floor 1 - Utility

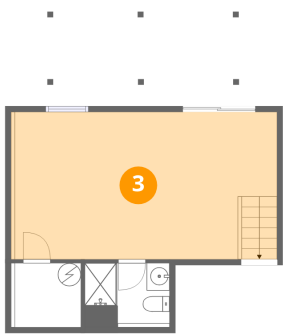


Max Dimensions: 5'9" x 5'7"
Calculated Area: 34 sq. ft
Included: No

Heated: Yes
Finished: No
Enclosed: Yes
Contiguous: Yes
Permitted: Yes
Wet space: No
Addition: No
Conversion: No

203 Mill Crossing Court, Greenbriar, Harmans, Anne Arundel
County, Maryland, United States, 21077

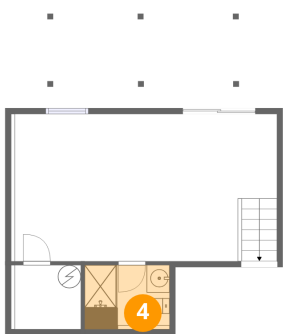
3 Floor 1 - Family Room



Max Dimensions: 22'10" x 12'9"
Calculated Area: 297 sq. ft
Included: Yes

Heated: Yes
Finished: Yes
Enclosed: Yes
Contiguous: Yes
Permitted: Yes
Wet space: No
Addition: No
Conversion: No

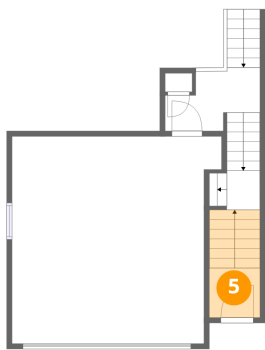
4 Floor 1 - Bath



Max Dimensions: 7'5" x 5'3"
Calculated Area: 41 sq. ft
Included: Yes

Heated: Yes
Finished: Yes
Enclosed: Yes
Contiguous: Yes
Permitted: Yes
Wet space: Yes
Addition: No
Conversion: No

5 Floor 2 - Foyer

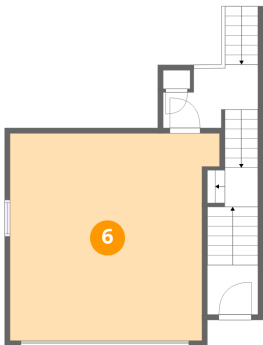


Max Dimensions: 4'9" x 4'7"
Calculated Area: 48 sq. ft
Included: Yes

Heated: Yes
Finished: Yes
Enclosed: Yes
Contiguous: Yes
Permitted: Yes
Wet space: No
Addition: No
Conversion: No

203 Mill Crossing Court, Greenbriar, Harmans, Anne Arundel County, Maryland, United States, 21077

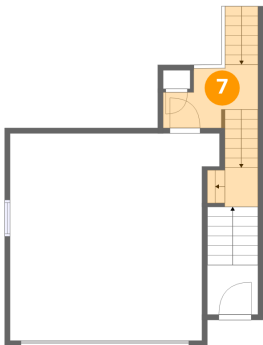
6 Floor 2 - Garage



Max Dimensions: 19'6" x 19'4"
Calculated Area: 352 sq. ft
Included: No

Heated: No
Finished: No
Enclosed: Yes
Contiguous: Yes
Permitted: Yes
Wet space: No
Addition: No
Conversion: No

7 Floor 2 - Hall



Max Dimensions: 8'10" x 5'7"
Calculated Area: 88 sq. ft
Included: Yes

Heated: Yes
Finished: Yes
Enclosed: Yes
Contiguous: Yes
Permitted: Yes
Wet space: No
Addition: No
Conversion: No

8 Floor 3 - Deck



Max Dimensions: 18'6" x 9'9"
Calculated Area: 181 sq. ft
Included: No

Heated: No
Finished: No
Enclosed: No
Contiguous: No
Permitted: Yes
Wet space: No
Addition: No
Conversion: No

203 Mill Crossing Court, Greenbriar, Harmans, Anne Arundel County, Maryland, United States, 21077

9 Floor 3 - Kitchen



Max Dimensions: 14'11" x 10'8"
Calculated Area: 261 sq. ft
Included: Yes

Heated: Yes
Finished: Yes
Enclosed: Yes
Contiguous: Yes
Permitted: Yes
Wet space: No
Addition: No
Conversion: No

10 Floor 3 - WC



Max Dimensions: 5'3" x 5'5"
Calculated Area: 28 sq. ft
Included: Yes

Heated: Yes
Finished: Yes
Enclosed: Yes
Contiguous: Yes
Permitted: Yes
Wet space: Yes
Addition: No
Conversion: No

11 Floor 3 - Dining Area



Max Dimensions: 23'2" x 9'8"
Calculated Area: 189 sq. ft
Included: Yes

Heated: Yes
Finished: Yes
Enclosed: Yes
Contiguous: Yes
Permitted: Yes
Wet space: No
Addition: No
Conversion: No

203 Mill Crossing Court, Greenbriar, Harmans, Anne Arundel County, Maryland, United States, 21077

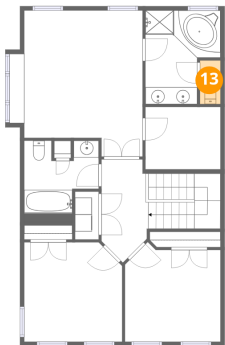
12 Floor 3 - Living Room



Max Dimensions: 24'11" x 18'9"
Calculated Area: 403 sq. ft
Included: Yes

Heated: Yes
Finished: Yes
Enclosed: Yes
Contiguous: Yes
Permitted: Yes
Wet space: No
Addition: No
Conversion: No

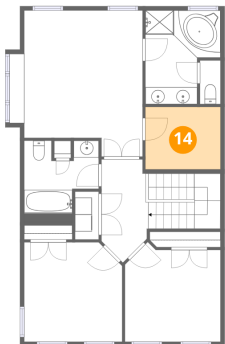
13 Floor 4 - WC



Max Dimensions: 2'5" x 5'2"
Calculated Area: 12 sq. ft
Included: Yes

Heated: Yes
Finished: Yes
Enclosed: Yes
Contiguous: Yes
Permitted: Yes
Wet space: Yes
Addition: No
Conversion: No

14 Floor 4 - W.I.C.

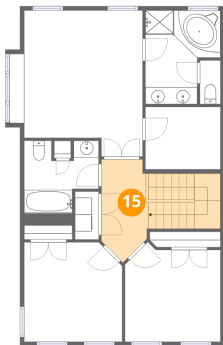


Max Dimensions: 8'10" x 7'4"
Calculated Area: 65 sq. ft
Included: Yes

Heated: Yes
Finished: Yes
Enclosed: Yes
Contiguous: Yes
Permitted: Yes
Wet space: No
Addition: No
Conversion: No

203 Mill Crossing Court, Greenbriar, Harmans, Anne Arundel County, Maryland, United States, 21077

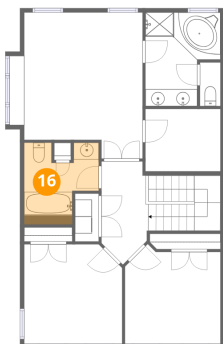
15 Floor 4 - Hall



Max Dimensions: 5'6" x 12'2"
Calculated Area: 114 sq. ft
Included: Yes

Heated: Yes
Finished: Yes
Enclosed: Yes
Contiguous: Yes
Permitted: Yes
Wet space: No
Addition: No
Conversion: No

16 Floor 4 - Bath



Max Dimensions: 8'9" x 8'7"
Calculated Area: 66 sq. ft
Included: Yes

Heated: Yes
Finished: Yes
Enclosed: Yes
Contiguous: Yes
Permitted: Yes
Wet space: Yes
Addition: No
Conversion: No

17 Floor 4 - Primary Bedroom

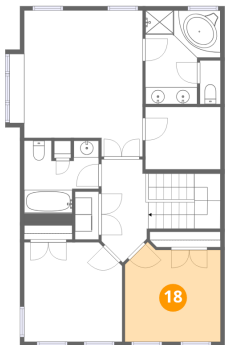


Max Dimensions: 15'8" x 17'3"
Calculated Area: 235 sq. ft
Included: Yes

Heated: Yes
Finished: Yes
Enclosed: Yes
Contiguous: Yes
Permitted: Yes
Wet space: No
Addition: No
Conversion: No

203 Mill Crossing Court, Greenbriar, Harmans, Anne Arundel County, Maryland, United States, 21077

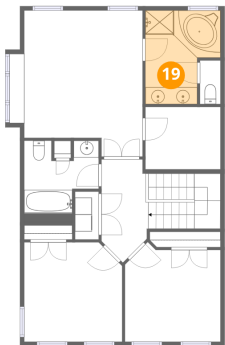
18 Floor 4 - Bedroom



Max Dimensions: 11'3" x 11'9"
Calculated Area: 121 sq. ft
Included: Yes

Heated: Yes
Finished: Yes
Enclosed: Yes
Contiguous: Yes
Permitted: Yes
Wet space: No
Addition: No
Conversion: No

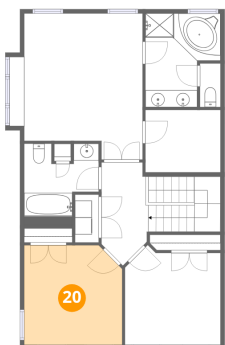
19 Floor 4 - Primary Bath



Max Dimensions: 8'10" x 11'1"
Calculated Area: 83 sq. ft
Included: Yes

Heated: Yes
Finished: Yes
Enclosed: Yes
Contiguous: Yes
Permitted: Yes
Wet space: Yes
Addition: No
Conversion: No

20 Floor 4 - Bedroom



Max Dimensions: 11'6" x 11'9"
Calculated Area: 132 sq. ft
Included: Yes

Heated: Yes
Finished: Yes
Enclosed: Yes
Contiguous: Yes
Permitted: Yes
Wet space: No
Addition: No
Conversion: No