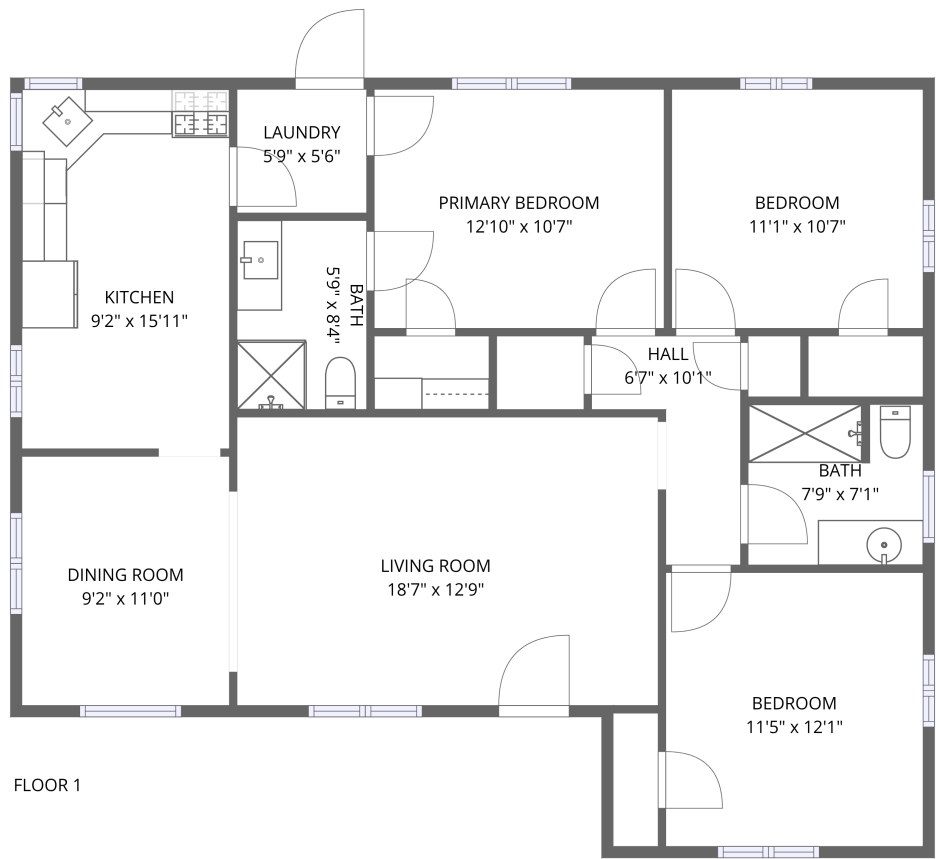


Home report

2310 East Amelia Avenue, Camelback East, Phoenix, Maricopa County, Arizona, United States, 85016



Total Area: 1172 sq. ft

Floor 1: 1172 sq. ft

Excluded: Walls: 74 sq. ft

Property summary

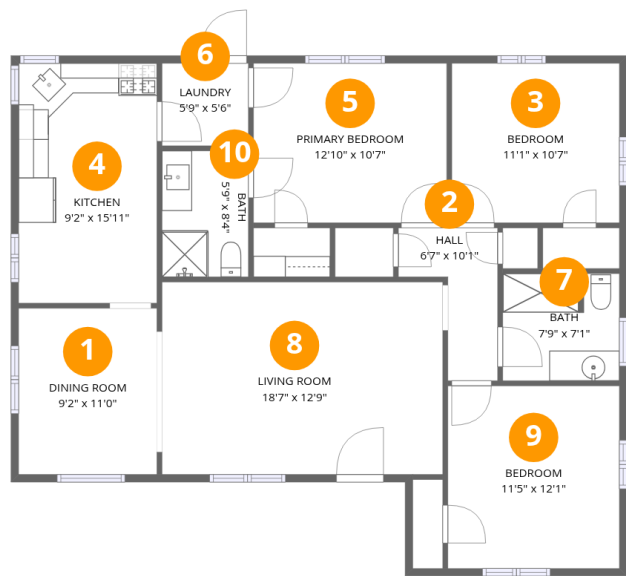
 1 Floors

 3 Bedrooms

 2 Bathrooms

Home report

2310 East Amelia Avenue, Camelback East, Phoenix, Maricopa County, Arizona, United States, 85016



Room dimensions

Floor 1

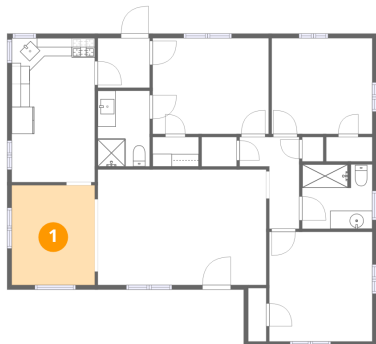
Total:1172sqft

Excluded: 0sqft

#		Max Dimensions	sqft	Included
1	Dining Room	9'2" x 11'0"	101 sq. ft	Yes
2	Hall	6'7" x 10'1"	44 sq. ft	Yes
3	Bedroom	11'1" x 10'7"	118 sq. ft	Yes
4	Kitchen	9'2" x 15'11"	146 sq. ft	Yes
5	Primary Bedroom	12'10" x 10'7"	136 sq. ft	Yes
6	Laundry	5'9" x 5'6"	31 sq. ft	Yes
7	Bath	7'9" x 7'1"	54 sq. ft	Yes
8	Living Room	18'7" x 12'9"	238 sq. ft	Yes
9	Bedroom	11'5" x 12'1"	138 sq. ft	Yes
10	Bath	5'9" x 8'4"	48 sq. ft	Yes

2310 East Amelia Avenue, Camelback East, Phoenix, Maricopa County, Arizona, United States, 85016

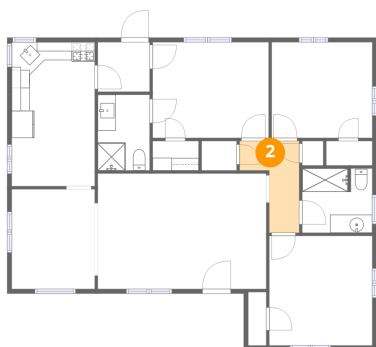
1 Floor 1 - Dining Room



Max Dimensions: 9'2" x 11'0"
Calculated Area: 101 sq. ft
Included: Yes

Heated: Yes
Finished: Yes
Enclosed: Yes
Contiguous: Yes
Permitted: Yes
Wet space: No
Addition: No
Conversion: No

2 Floor 1 - Hall

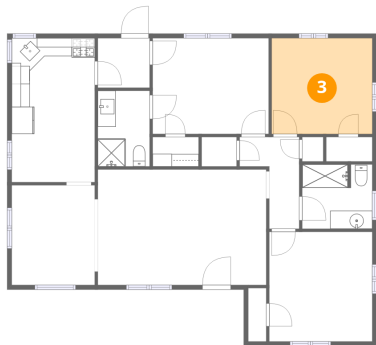


Max Dimensions: 6'7" x 10'1"
Calculated Area: 44 sq. ft
Included: Yes

Heated: Yes
Finished: Yes
Enclosed: Yes
Contiguous: Yes
Permitted: Yes
Wet space: No
Addition: No
Conversion: No

2310 East Amelia Avenue, Camelback East, Phoenix, Maricopa County, Arizona, United States, 85016

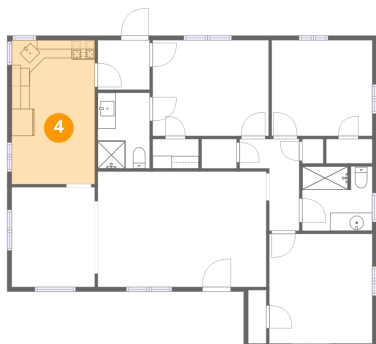
3 Floor 1 - Bedroom



Max Dimensions: 11'1" x 10'7"
Calculated Area: 118 sq. ft
Included: Yes

Heated: Yes
Finished: Yes
Enclosed: Yes
Contiguous: Yes
Permitted: Yes
Wet space: No
Addition: No
Conversion: No

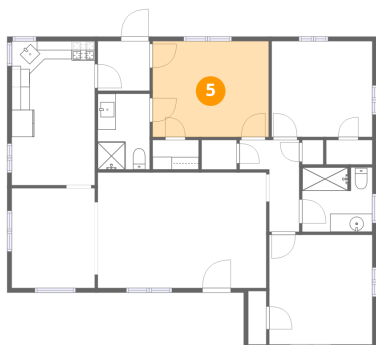
4 Floor 1 - Kitchen



Max Dimensions: 9'2" x 15'11"
Calculated Area: 146 sq. ft
Included: Yes

Heated: Yes
Finished: Yes
Enclosed: Yes
Contiguous: Yes
Permitted: Yes
Wet space: No
Addition: No
Conversion: No

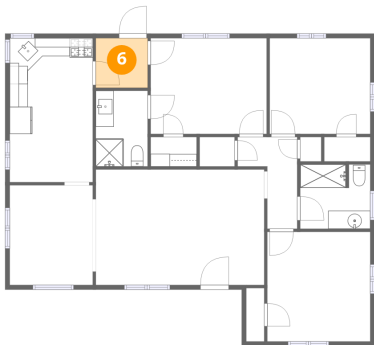
5 Floor 1 - Primary Bedroom



Max Dimensions: 12'10" x 10'7"
Calculated Area: 136 sq. ft
Included: Yes

Heated: Yes
Finished: Yes
Enclosed: Yes
Contiguous: Yes
Permitted: Yes
Wet space: No
Addition: No
Conversion: No

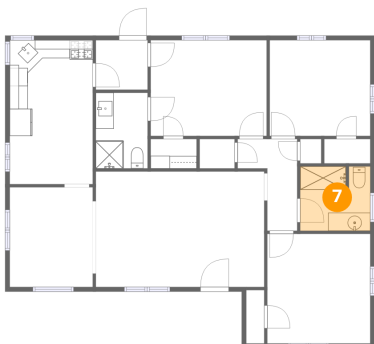
6 Floor 1 - Laundry



Max Dimensions: 5'9" x 5'6"
Calculated Area: 31 sq. ft
Included: Yes

Heated: Yes
Finished: Yes
Enclosed: Yes
Contiguous: Yes
Permitted: Yes
Wet space: No
Addition: No
Conversion: No

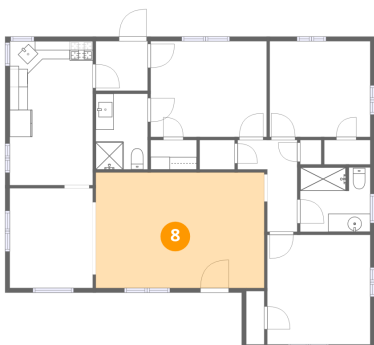
7 Floor 1 - Bath



Max Dimensions: 7'9" x 7'1"
Calculated Area: 54 sq. ft
Included: Yes

Heated: Yes
Finished: Yes
Enclosed: Yes
Contiguous: Yes
Permitted: Yes
Wet space: Yes
Addition: No
Conversion: No

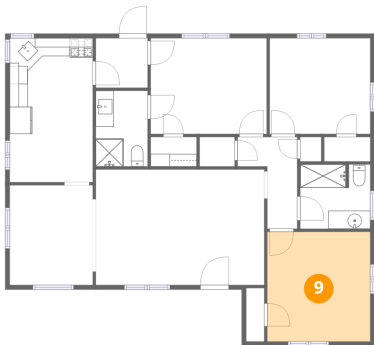
8 Floor 1 - Living Room



Max Dimensions: 18'7" x 12'9"
Calculated Area: 238 sq. ft
Included: Yes

Heated: Yes
Finished: Yes
Enclosed: Yes
Contiguous: Yes
Permitted: Yes
Wet space: No
Addition: No
Conversion: No

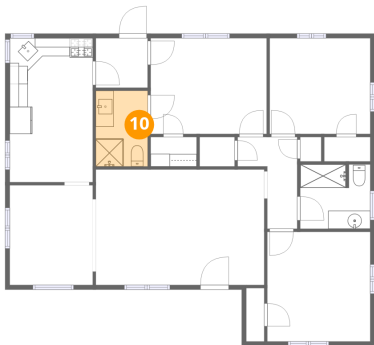
9 Floor 1 - Bedroom



Max Dimensions: 11'5" x 12'1"
Calculated Area: 138 sq. ft
Included: Yes

Heated: Yes
Finished: Yes
Enclosed: Yes
Contiguous: Yes
Permitted: Yes
Wet space: No
Addition: No
Conversion: No

10 Floor 1 - Bath



Max Dimensions: 5'9" x 8'4"
Calculated Area: 48 sq. ft
Included: Yes

Heated: Yes
Finished: Yes
Enclosed: Yes
Contiguous: Yes
Permitted: Yes
Wet space: Yes
Addition: No
Conversion: No