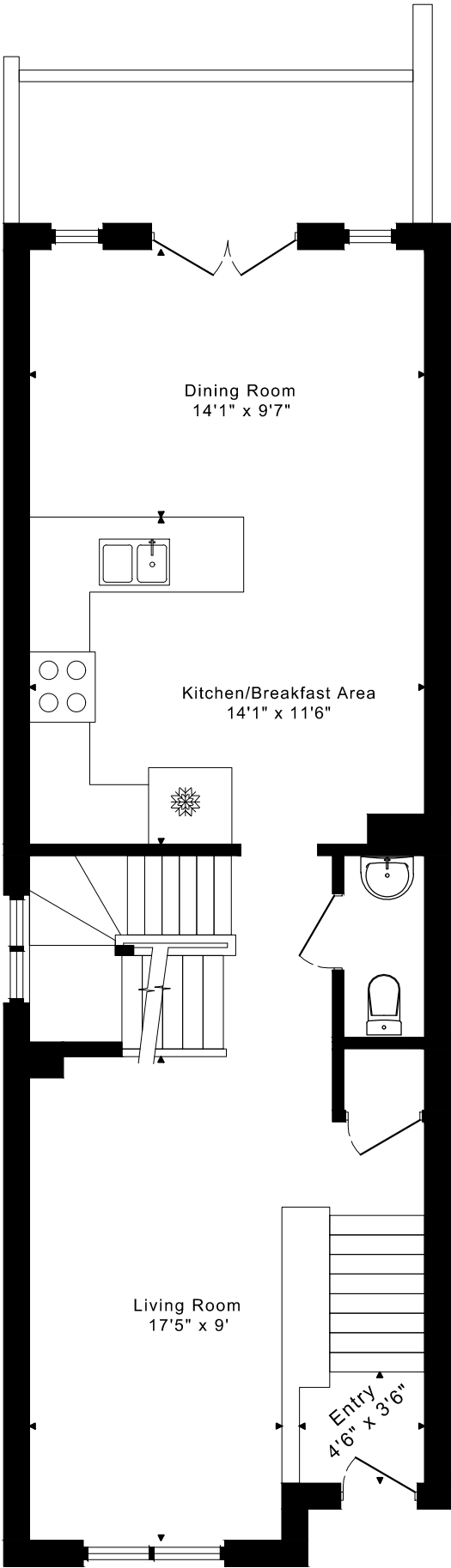
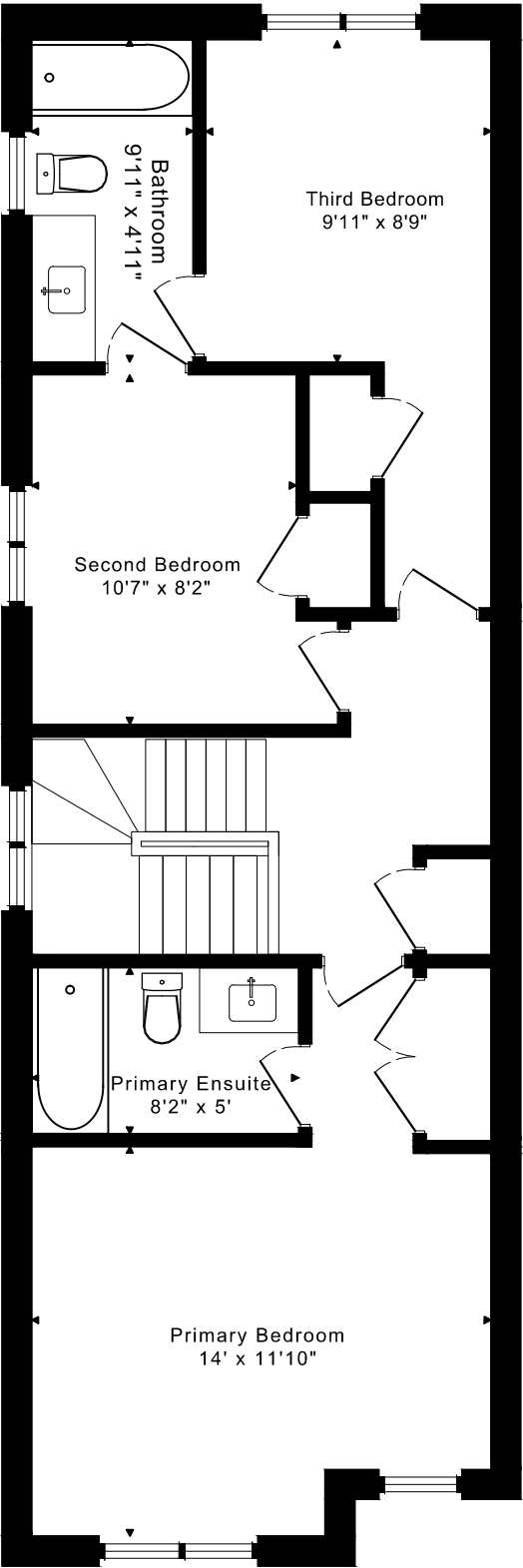


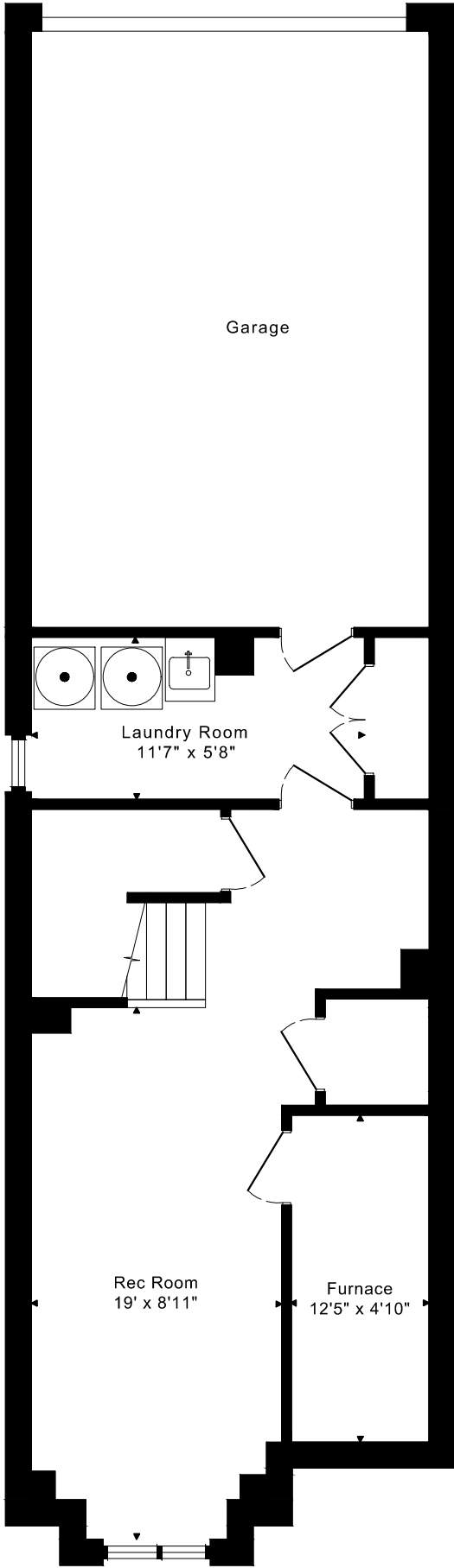
193 DUNDAS WAY
FLOOR PLANS



MAIN FLOOR
755 SQUARE FEET



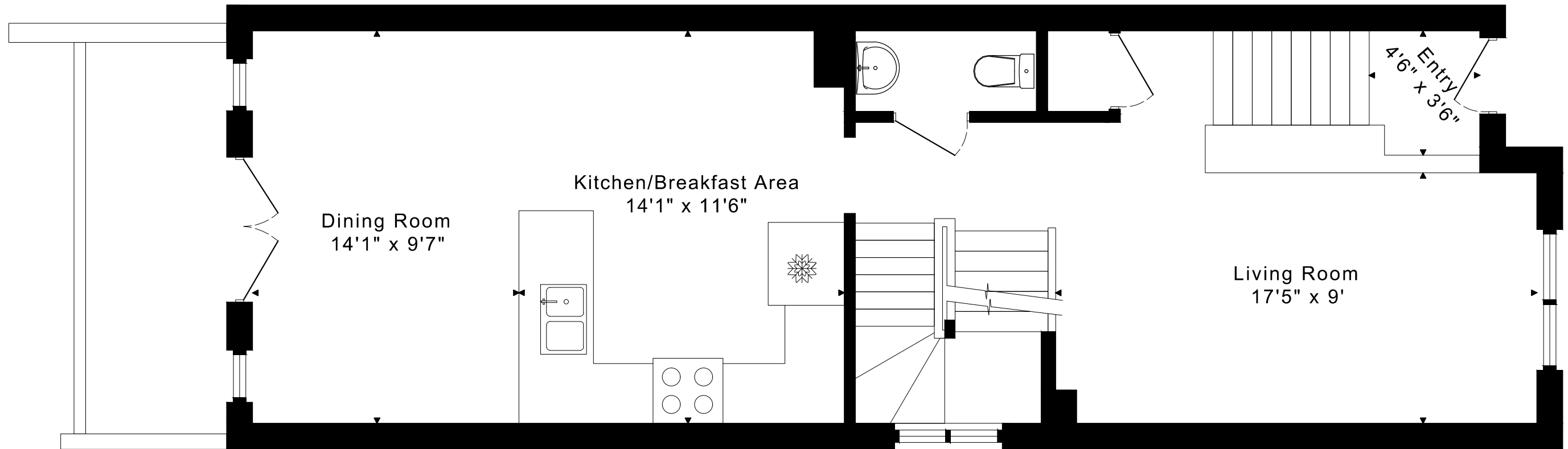
SECOND FLOOR
755 SQUARE FEET



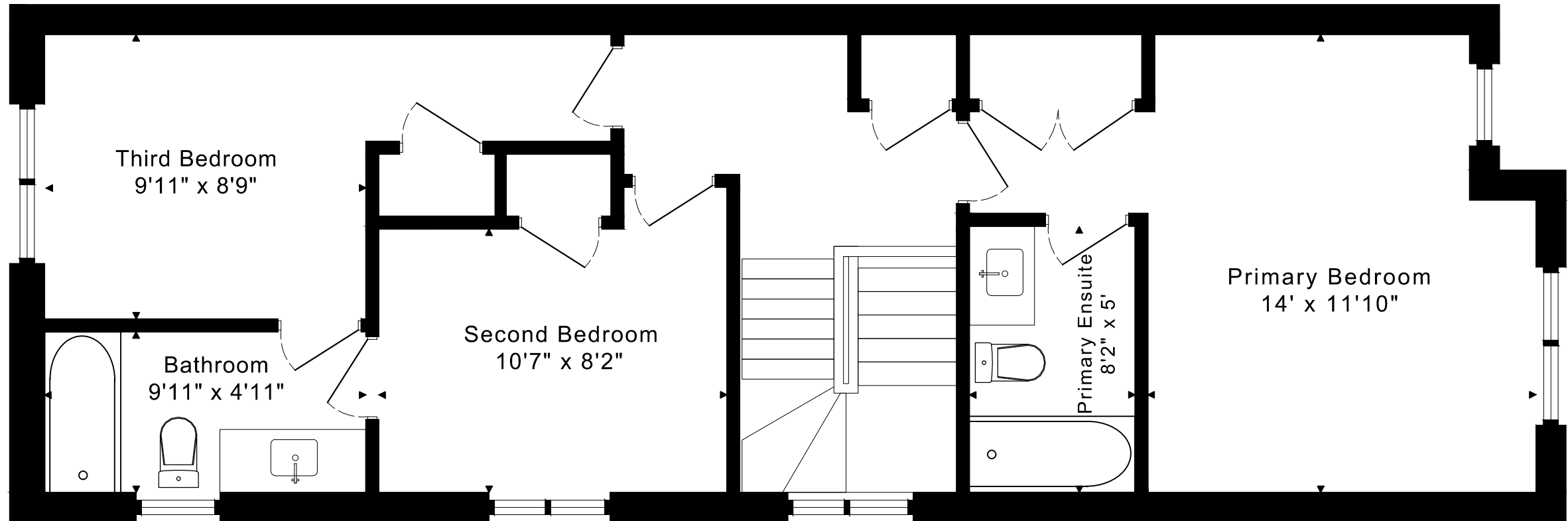
LOWER FLOOR
505 SQUARE FEET

1510 sq ft + 505 sq ft
BELOW GRADE

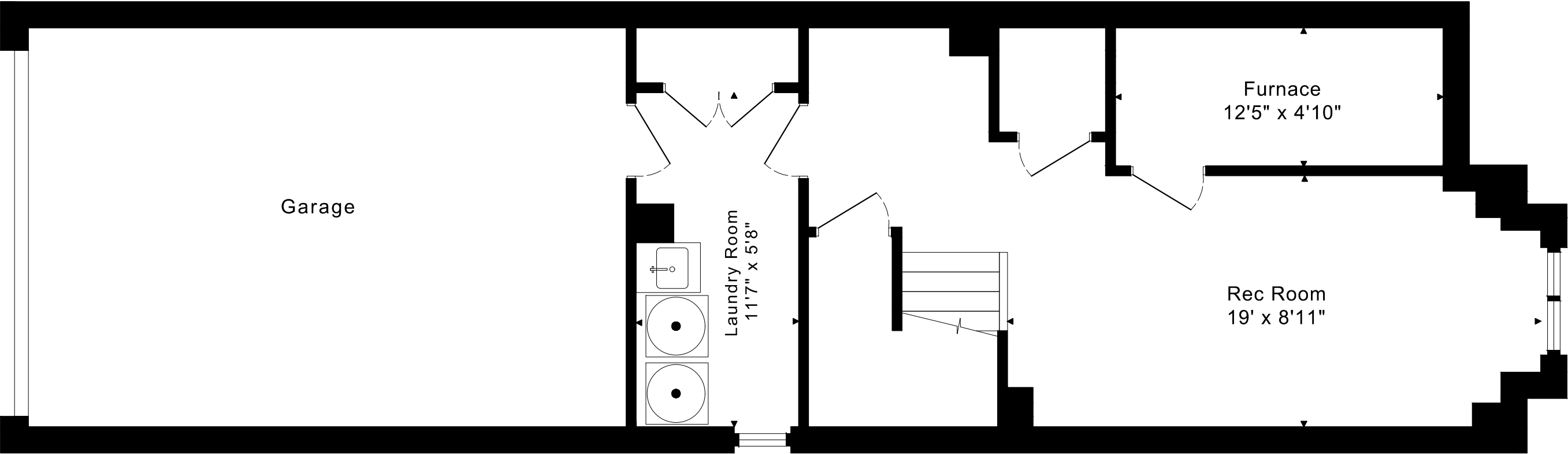
193 DUNDAS WAY
FLOOR PLANS
MAIN FLOOR 755 SQUARE FEET



193 DUNDAS WAY
FLOOR PLANS
SECOND FLOOR 755 SQUARE FEET



193 DUNDAS WAY
FLOOR PLANS
LOWER FLOOR 505 SQUARE FEET



193 DUNDAS WAY ROOM MEASUREMENTS

Floor	Room	Imperial						Metric [m]		
		Length		Width		Height		Length	Width	Height
		Feet	Inches	Feet	Inches	Feet	Inches			
Second	Primary Bedroom	14	0	11	10	8	1	4,27	3,61	2,46
	Primary Ensuite	8	2	5	0	8	1	2,49	1,52	2,46
	Second Bedroom	10	7	8	2	8	1	3,23	2,49	2,46
	Third Bedroom	9	11	8	9	8	1	3,02	2,67	2,46
	Bathroom	9	11	4	11	8	1	3,02	1,50	2,46
Main	Entry	4	6	3	6	13	4	1,37	1,07	4,06
	Living Room	17	5	9	0	9	1	5,31	2,74	2,77
	Dining Room	14	1	9	7	9	1	4,29	2,92	2,77
	Kitchen/Breakfast Area	14	1	11	6	9	1	4,29	3,51	2,77
Lower	Rec Room	19	0	8	11	8	1	5,79	2,72	2,46
	Laundry Room	11	7	5	8	8	1	3,53	1,73	2,46
	Furnace	12	5	4	10	8	1	3,78	1,47	2,46

The following is a disclaimer regarding the approximate nature of dimensions and floor areas listed in this document:

Disclaimer:

The dimensions and floor areas listed in this document are provided as an estimate only and are intended to be used for illustration purposes only. These measurements are not necessarily meant to be a perfect representation of the actual space.

Notes regarding measurement methods and accuracy:

The utilization of laser measurement technology during the 3D model capturing process at the location provides an accurate representation of floor plans, with a typical margin of error of 3-5%. For the most accurate and official measurement data, it is advised to consult official documents such as MPAC records, builder's pre-construction plans, or data from certified measurement companies.

Exterior wall thickness is included in the calculation of the overall square footage and is considered as a component of the footprint. The wall thickness measurement is obtained onsite whenever possible, or estimated in the event where obtaining onsite measurements is not possible, such as in the case of condominium buildings where wall thickness may vary throughout the building.