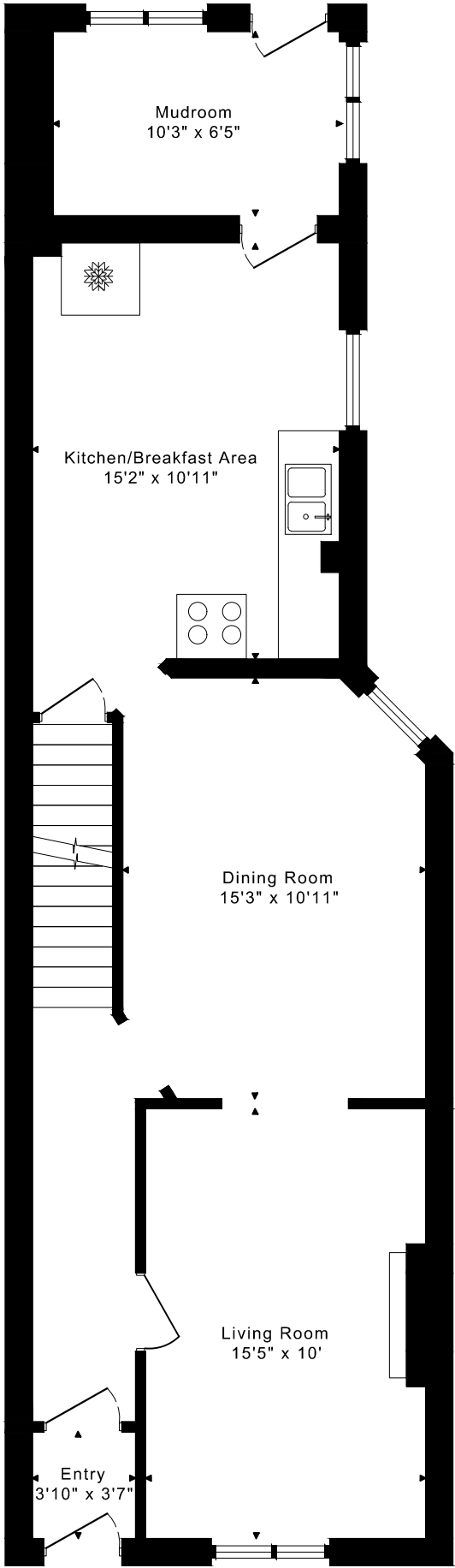
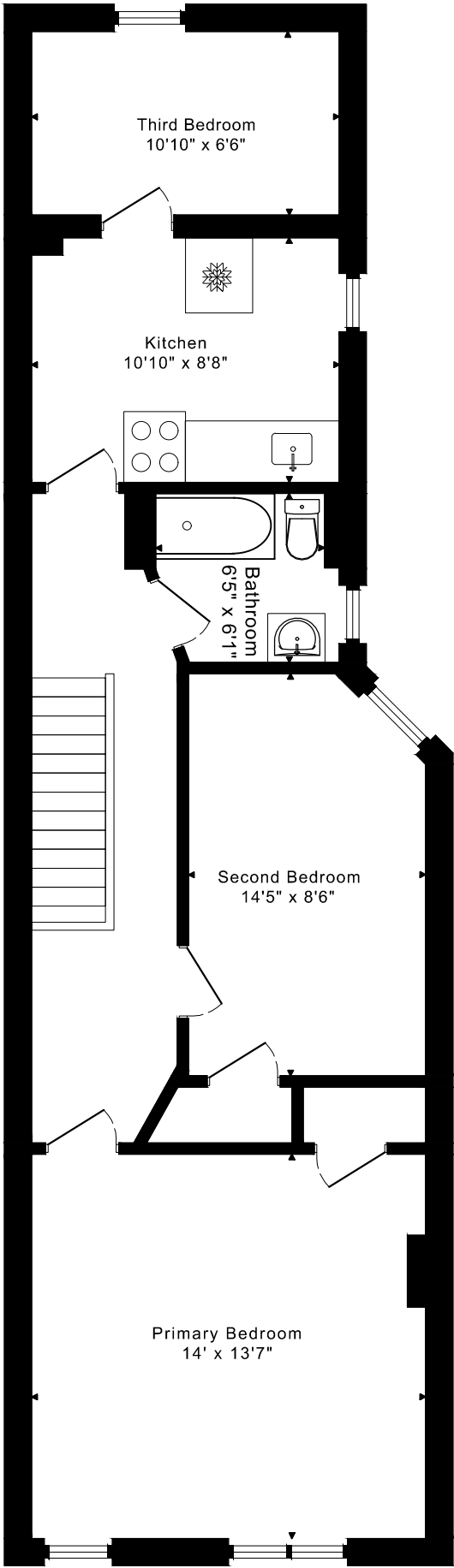


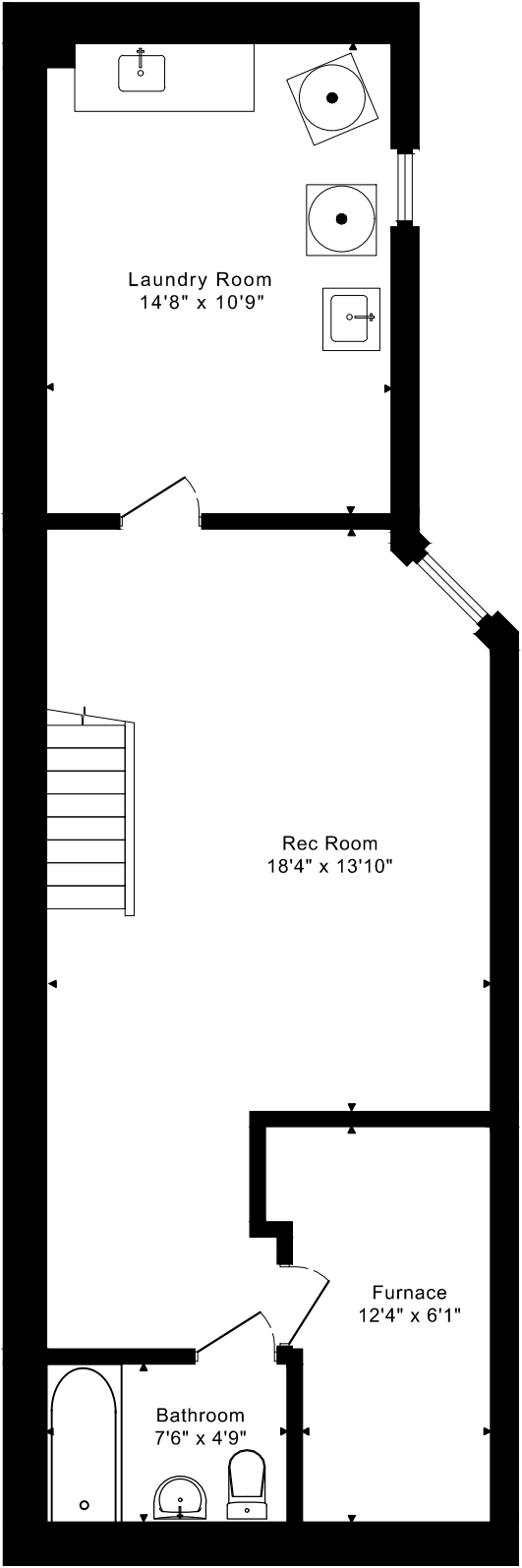
667 SHAW STREET  
FLOOR PLANS



MAIN FLOOR  
820 SQUARE FEET



SECOND FLOOR  
820 SQUARE FEET

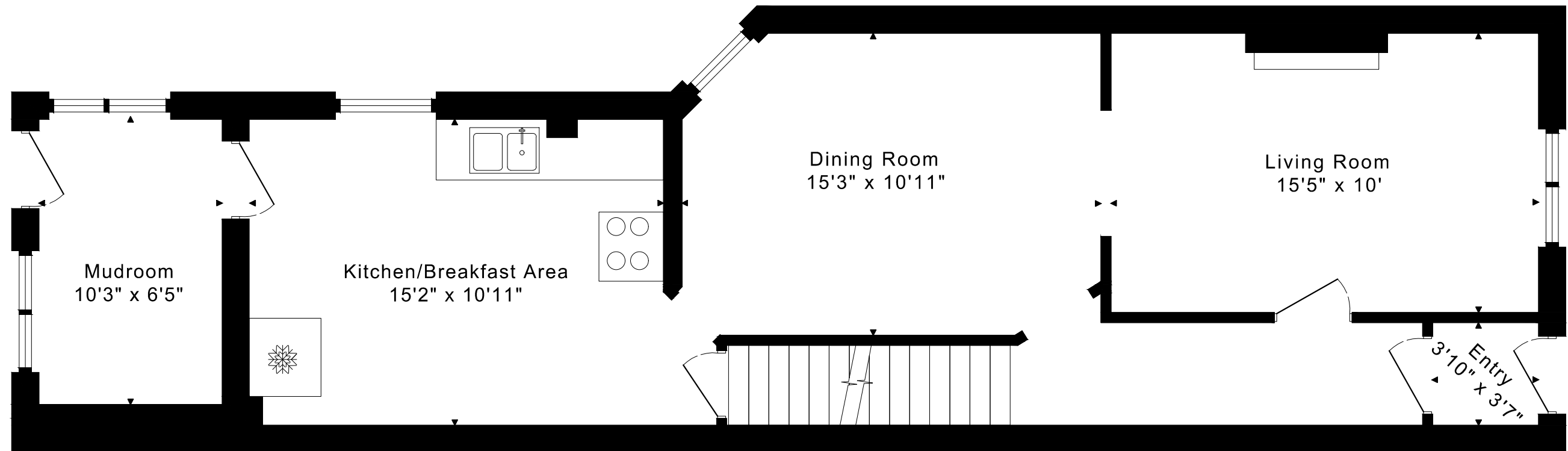


LOWER FLOOR  
730 SQUARE FEET

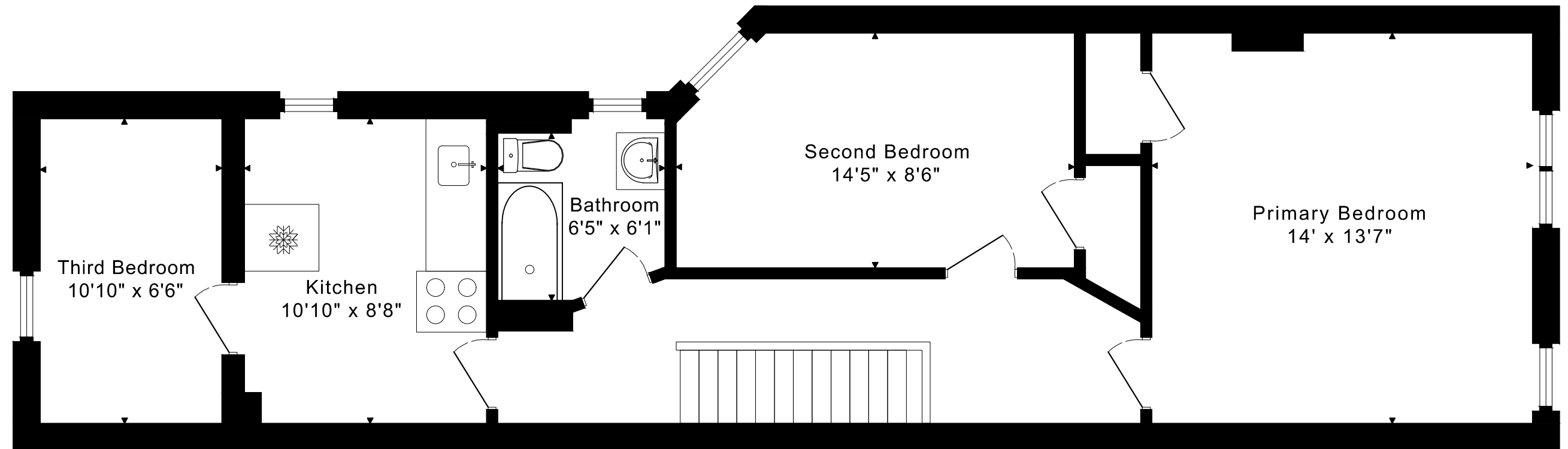
1640 sq ft + 730 sq ft  
BELOW GRADE

# 667 SHAW STREET FLOOR PLANS

MAIN FLOOR 820 SQUARE FEET



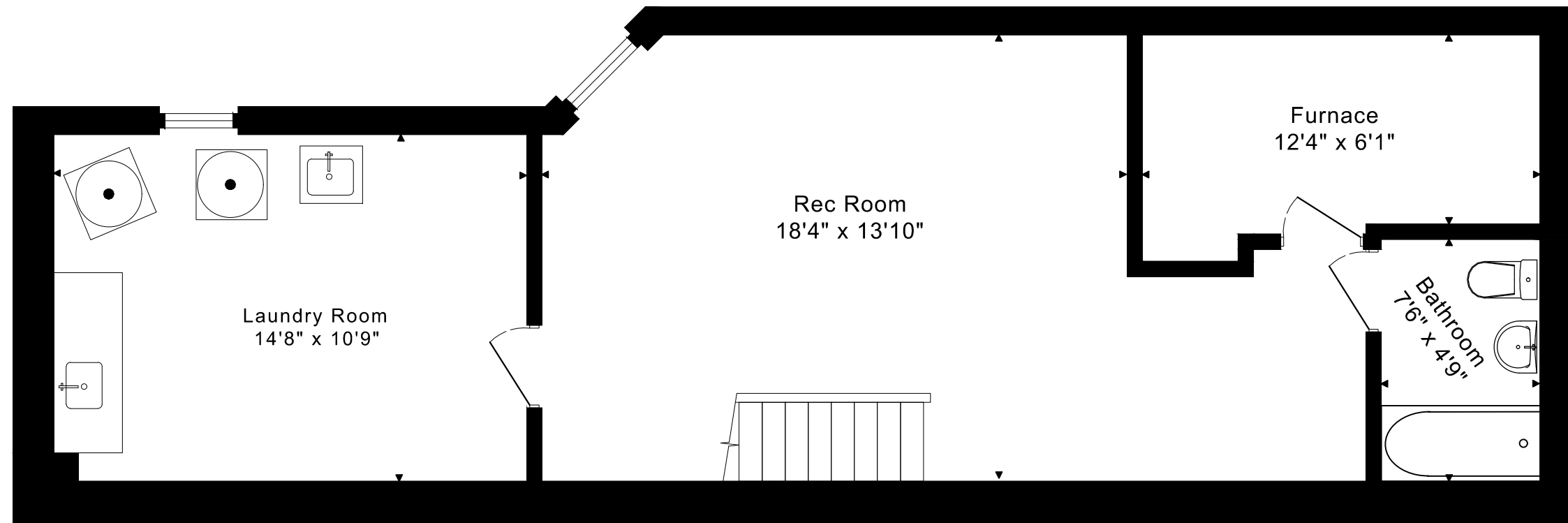
667 SHAW STREET  
FLOOR PLANS  
SECOND FLOOR 820 SQUARE FEET



# 667 SHAW STREET

## FLOOR PLANS

LOWER FLOOR 730 SQUARE FEET



667 SHAW STREET ROOM MEASUREMENTS

Floor	Room	Imperial						Metric [m]		
		Length		Width		Height		Length	Width	Height
		Feet	Inches	Feet	Inches	Feet	Inches			
Second	Primary Bedroom	14	0	13	7	8	6	4,27	4,14	2,59
	Second Bedroom	14	5	8	6	8	6	4,39	2,59	2,59
	Kitchen	10	10	8	8	8	6	3,30	2,64	2,59
	Third Bedroom	10	10	6	6	9	3	3,30	1,98	2,82
	Bathroom	6	5	6	1	8	6	1,96	1,85	2,59
Main	Entry	3	10	3	7	9	7	1,17	1,09	2,92
	Living Room	15	5	10	0	9	7	4,70	3,05	2,92
	Dining Room	15	3	10	11	9	7	4,65	3,33	2,92
	Kitchen/Breakfast Area	15	2	10	11	9	7	4,62	3,33	2,92
	Mudroom	10	3	6	5	9	7	3,12	1,96	2,92
Lower	Rec Room	18	4	13	10	6	6	5,59	4,22	1,98
	Laundry Room	14	8	10	9	6	6	4,47	3,28	1,98
	Furnace	12	4	6	1	6	6	3,76	1,85	1,98
	Bathroom	7	6	4	9	6	6	2,29	1,45	1,98

CAPTURED ON: 4 OCT 2025  
DIMENSIONS ARE APPROXIMATE AND SHOULD BE CONSIDERED  
ILLUSTRATIVE ONLY.

1640 sq ft + 730 sq ft  
BELOW GRADE

The following is a disclaimer regarding the approximate nature of dimensions and floor areas listed in this document:

---

**Disclaimer:**

The dimensions and floor areas listed in this document are provided as an estimate only and are intended to be used for illustration purposes only. These measurements are not necessarily meant to be a perfect representation of the actual space.

**Notes regarding measurement methods and accuracy:**

The utilization of laser measurement technology during the 3D model capturing process at the location provides an accurate representation of floor plans, with a typical margin of error of 3-5%. For the most accurate and official measurement data, it is advised to consult official documents such as MPAC records, builder's pre-construction plans, or data from certified measurement companies.

Exterior wall thickness is included in the calculation of the overall square footage and is considered as a component of the footprint. The wall thickness measurement is obtained onsite whenever possible, or estimated in the event where obtaining onsite measurements is not possible, such as in the case of condominium buildings where wall thickness may vary throughout the building.