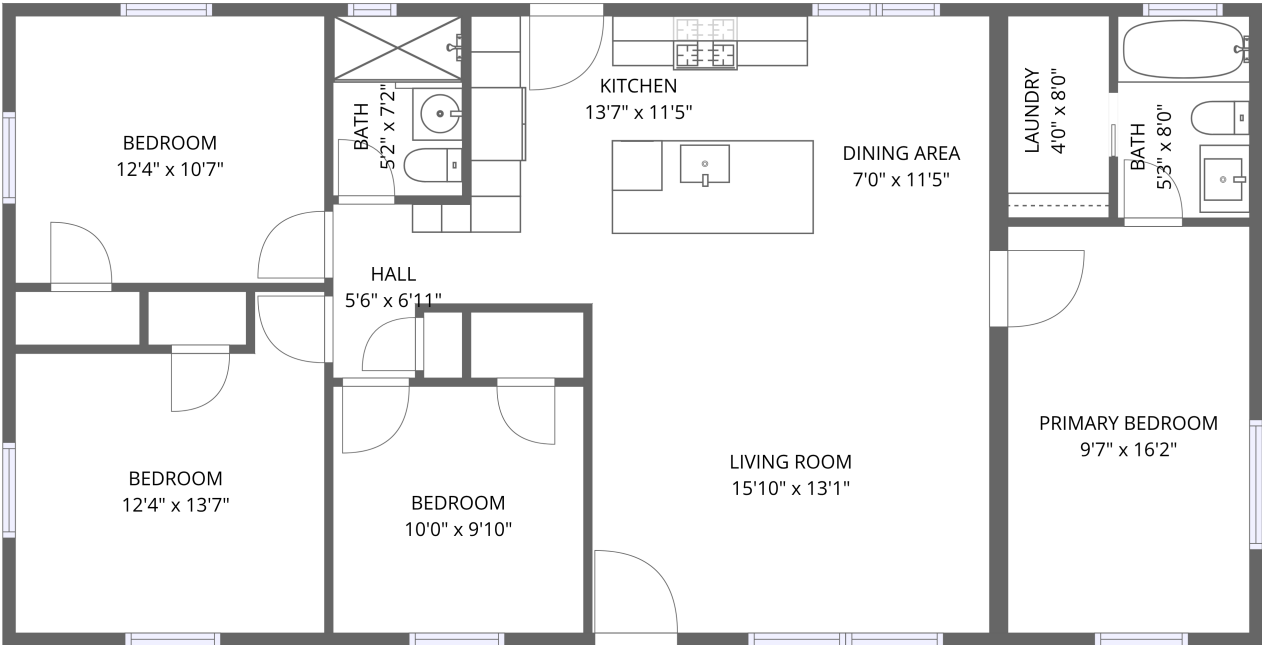


Home report

1246 East Vista Avenue, Camelback East, Phoenix, Maricopa County, Arizona, United States, 85020



FLOOR 1


Total Area: 1204 sq. ft

Floor 1: 1204 sq. ft

Excluded: Walls: 75 sq. ft

Property summary

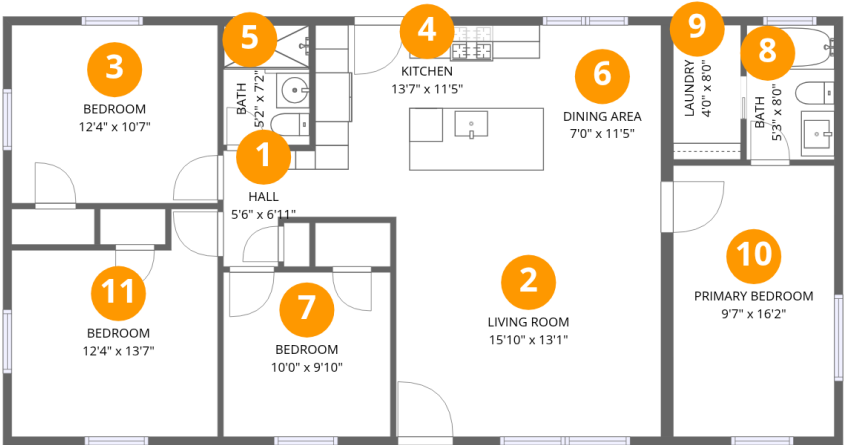
 1 Floors

 4 Bedrooms

 2 Bathrooms

Home report

1246 East Vista Avenue, Camelback East, Phoenix, Maricopa County, Arizona, United States, 85020



Room dimensions

Floor 1 Total:1204sqft Excluded: 0sqft

#		Max Dimensions	sqft	Included
1	Hall	5'6" x 6'11"	31 sq. ft	Yes
2	Living Room	15'10" x 13'1"	207 sq. ft	Yes
3	Bedroom	12'4" x 10'7"	131 sq. ft	Yes
4	Kitchen	13'7" x 11'5"	156 sq. ft	Yes
5	Bath	5'2" x 7'2"	37 sq. ft	Yes
6	Dining Area	7'0" x 11'5"	80 sq. ft	Yes
7	Bedroom	10'0" x 9'10"	98 sq. ft	Yes
8	Bath	5'3" x 8'0"	42 sq. ft	Yes
9	Laundry	4'0" x 8'0"	32 sq. ft	Yes
10	Primary Bedroom	9'7" x 16'2"	156 sq. ft	Yes
11	Bedroom	12'4" x 13'7"	144 sq. ft	Yes

1246 East Vista Avenue, Camelback East, Phoenix, Maricopa County, Arizona, United States, 85020

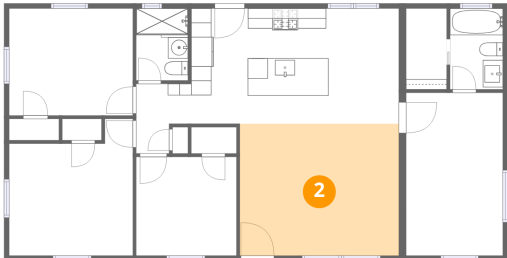
1 Floor 1 - Hall



Max Dimensions: 5'6" x 6'11"
Calculated Area: 31 sq. ft
Included: Yes

Heated: Yes
Finished: Yes
Enclosed: Yes
Contiguous: Yes
Permitted: Yes
Wet space: No
Addition: No
Conversion: No

2 Floor 1 - Living Room



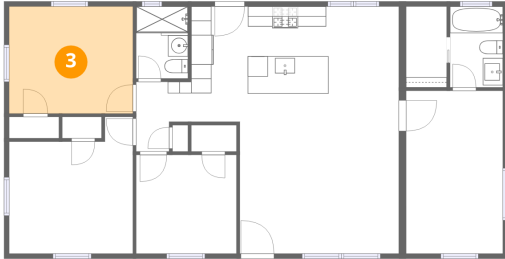
Max Dimensions: 15'10" x 13'1"
Calculated Area: 207 sq. ft
Included: Yes

Heated: Yes
Finished: Yes
Enclosed: Yes
Contiguous: Yes
Permitted: Yes
Wet space: No
Addition: No
Conversion: No

Home report

1246 East Vista Avenue, Camelback East, Phoenix, Maricopa County, Arizona, United States, 85020

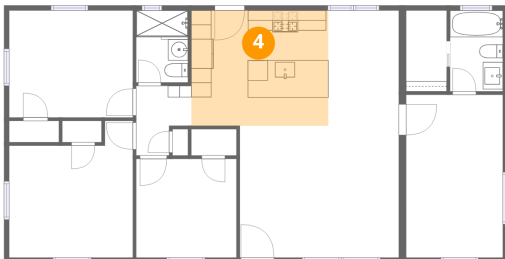
3 Floor 1 - Bedroom



Max Dimensions: 12'4" x 10'7"
Calculated Area: 131 sq. ft
Included: Yes

Heated: Yes
Finished: Yes
Enclosed: Yes
Contiguous: Yes
Permitted: Yes
Wet space: No
Addition: No
Conversion: No

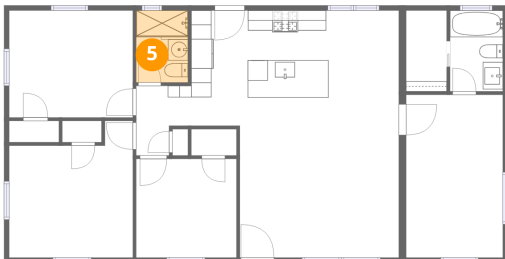
4 Floor 1 - Kitchen



Max Dimensions: 13'7" x 11'5"
Calculated Area: 156 sq. ft
Included: Yes

Heated: Yes
Finished: Yes
Enclosed: Yes
Contiguous: Yes
Permitted: Yes
Wet space: No
Addition: No
Conversion: No

5 Floor 1 - Bath



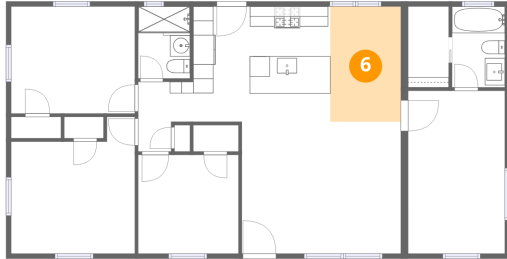
Max Dimensions: 5'2" x 7'2"
Calculated Area: 37 sq. ft
Included: Yes

Heated: Yes
Finished: Yes
Enclosed: Yes
Contiguous: Yes
Permitted: Yes
Wet space: Yes
Addition: No
Conversion: No

Home report

1246 East Vista Avenue, Camelback East, Phoenix, Maricopa County, Arizona, United States, 85020

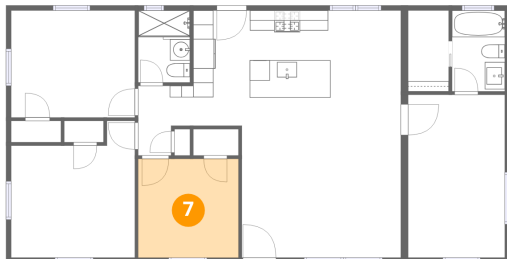
6 Floor 1 - Dining Area



Max Dimensions: 7'0" x 11'5"
Calculated Area: 80 sq. ft
Included: Yes

Heated: Yes
Finished: Yes
Enclosed: Yes
Contiguous: Yes
Permitted: Yes
Wet space: No
Addition: No
Conversion: No

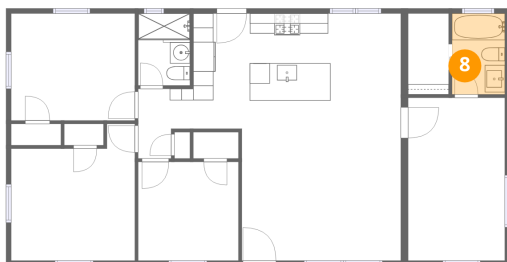
7 Floor 1 - Bedroom



Max Dimensions: 10'0" x 9'10"
Calculated Area: 98 sq. ft
Included: Yes

Heated: Yes
Finished: Yes
Enclosed: Yes
Contiguous: Yes
Permitted: Yes
Wet space: No
Addition: No
Conversion: No

8 Floor 1 - Bath



Max Dimensions: 5'3" x 8'0"
Calculated Area: 42 sq. ft
Included: Yes

Heated: Yes
Finished: Yes
Enclosed: Yes
Contiguous: Yes
Permitted: Yes
Wet space: Yes
Addition: No
Conversion: No

Home report

1246 East Vista Avenue, Camelback East, Phoenix, Maricopa County, Arizona, United States, 85020

9 Floor 1 - Laundry



Max Dimensions: 4'0" x 8'0"
Calculated Area: 32 sq. ft
Included: Yes

Heated: Yes
Finished: Yes
Enclosed: Yes
Contiguous: Yes
Permitted: Yes
Wet space: No
Addition: No
Conversion: No

10 Floor 1 - Primary Bedroom



Max Dimensions: 9'7" x 16'2"
Calculated Area: 156 sq. ft
Included: Yes

Heated: Yes
Finished: Yes
Enclosed: Yes
Contiguous: Yes
Permitted: Yes
Wet space: No
Addition: No
Conversion: No

11 Floor 1 - Bedroom



Max Dimensions: 12'4" x 13'7"
Calculated Area: 144 sq. ft
Included: Yes

Heated: Yes
Finished: Yes
Enclosed: Yes
Contiguous: Yes
Permitted: Yes
Wet space: No
Addition: No
Conversion: No