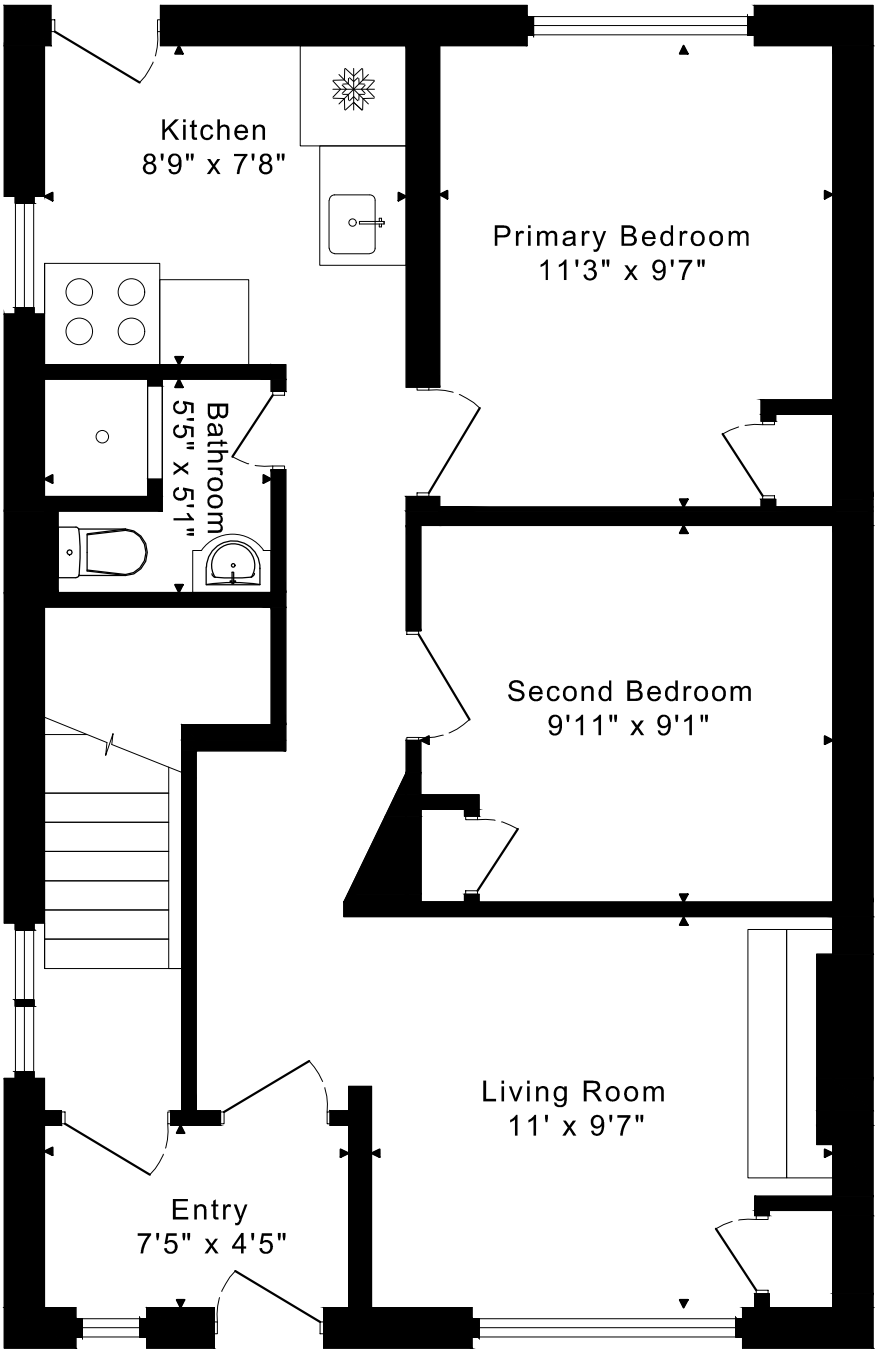
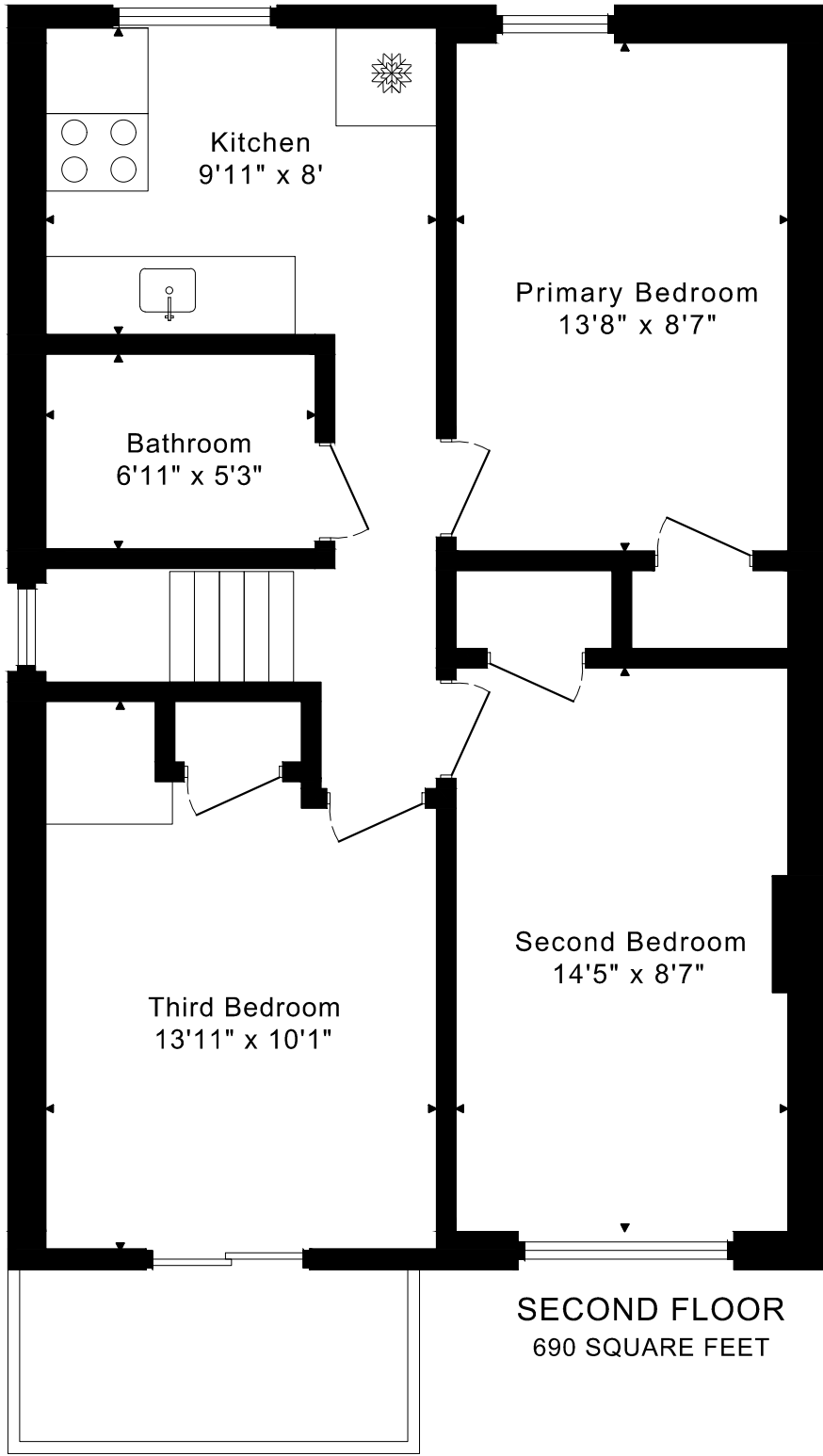


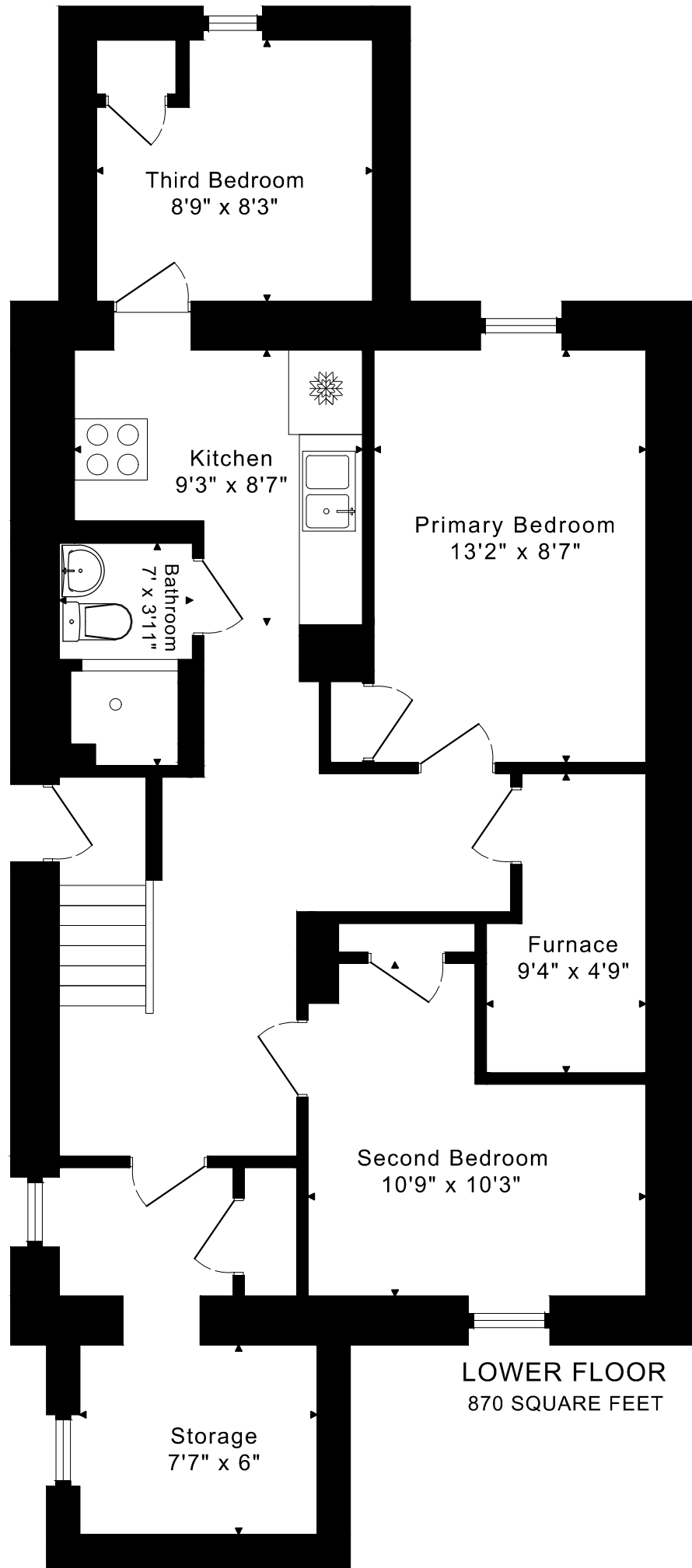
1837 DUFFERIN STREET  
FLOOR PLANS



MAIN FLOOR  
690 SQUARE FEET



SECOND FLOOR  
690 SQUARE FEET

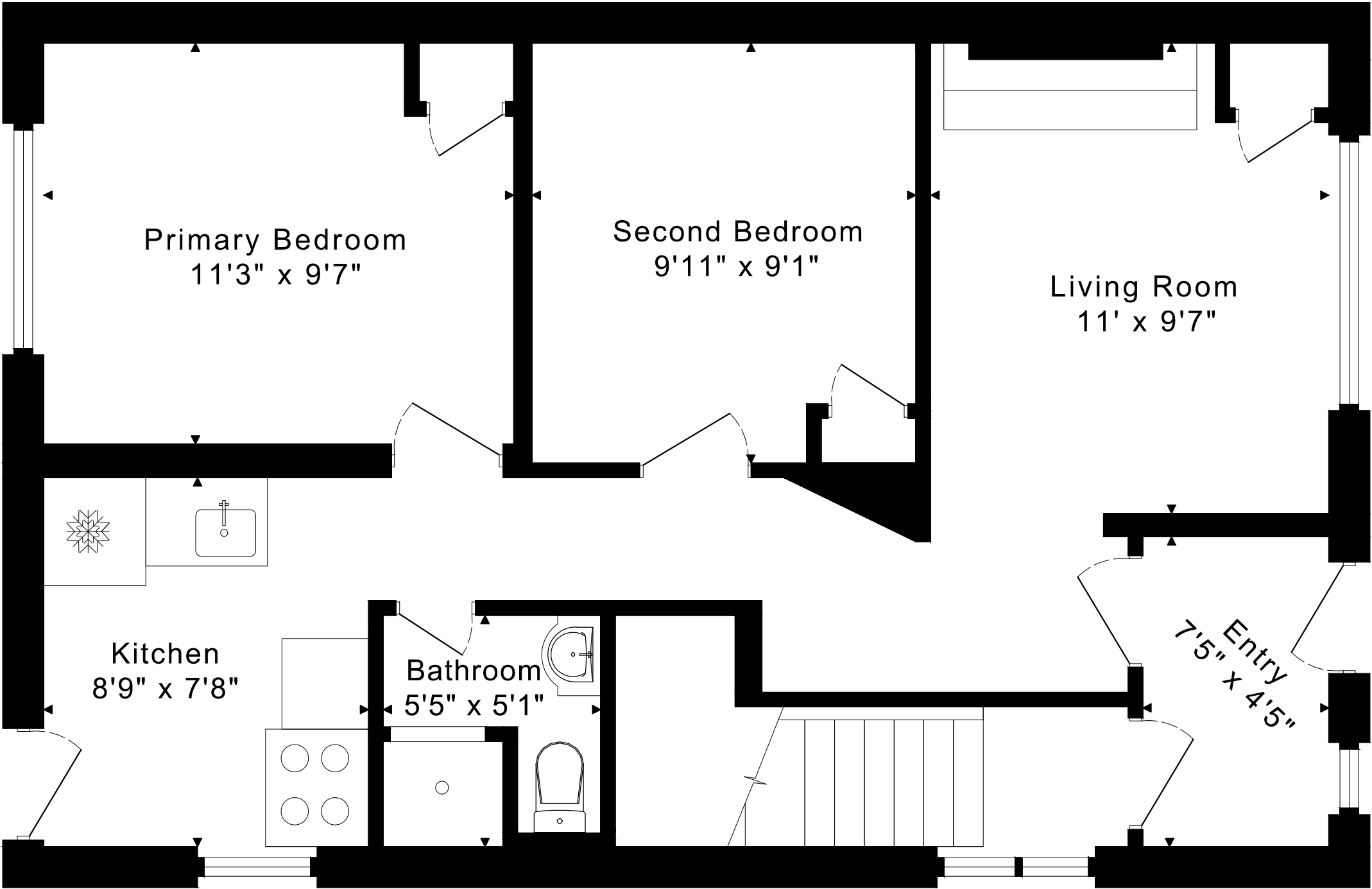


LOWER FLOOR  
870 SQUARE FEET

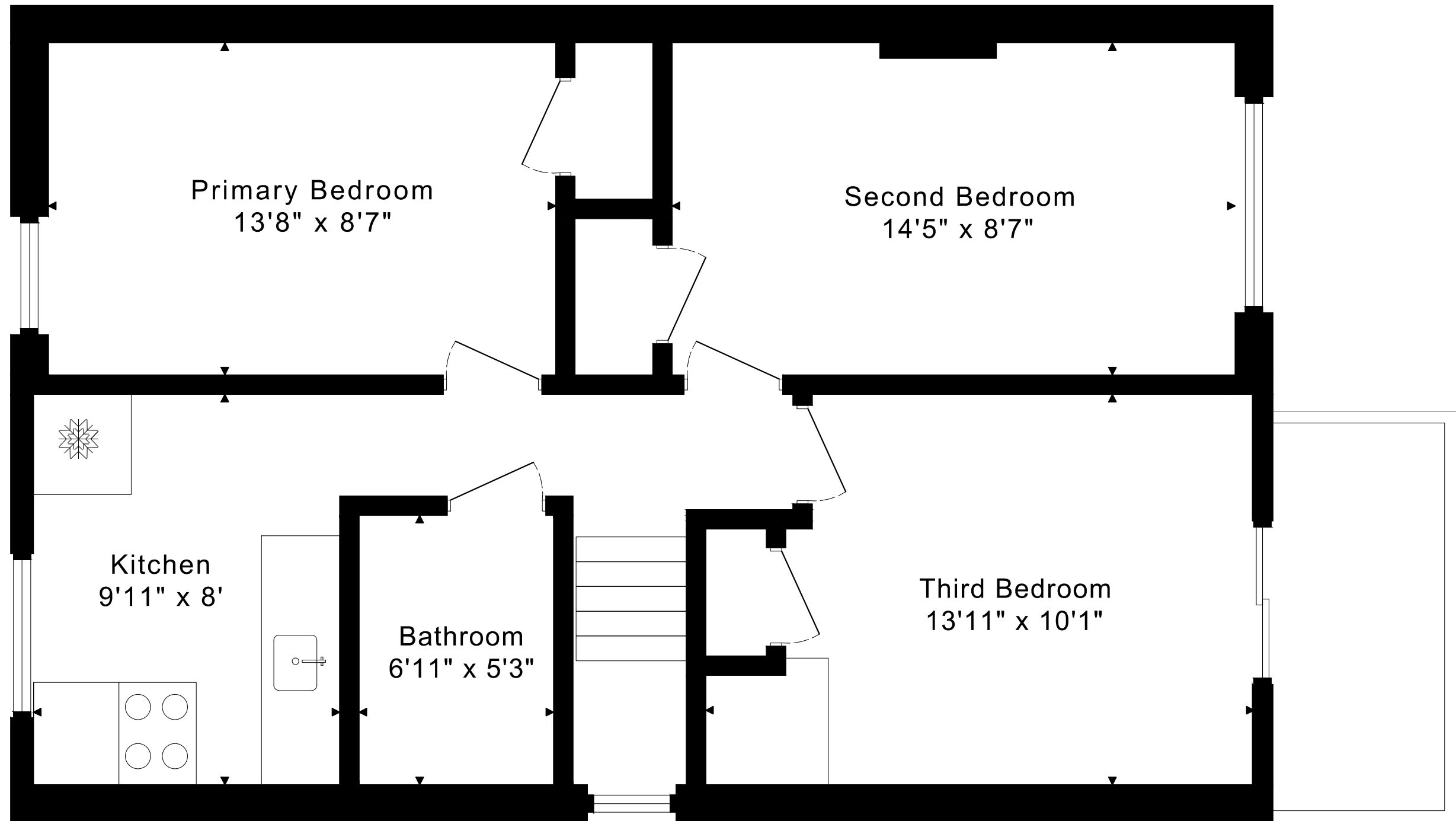
1380 sq ft + 870 sq ft  
BELOW GRADE

1837 DUFFERIN STREET  
FLOOR PLANS

MAIN FLOOR 690 SQUARE FEET

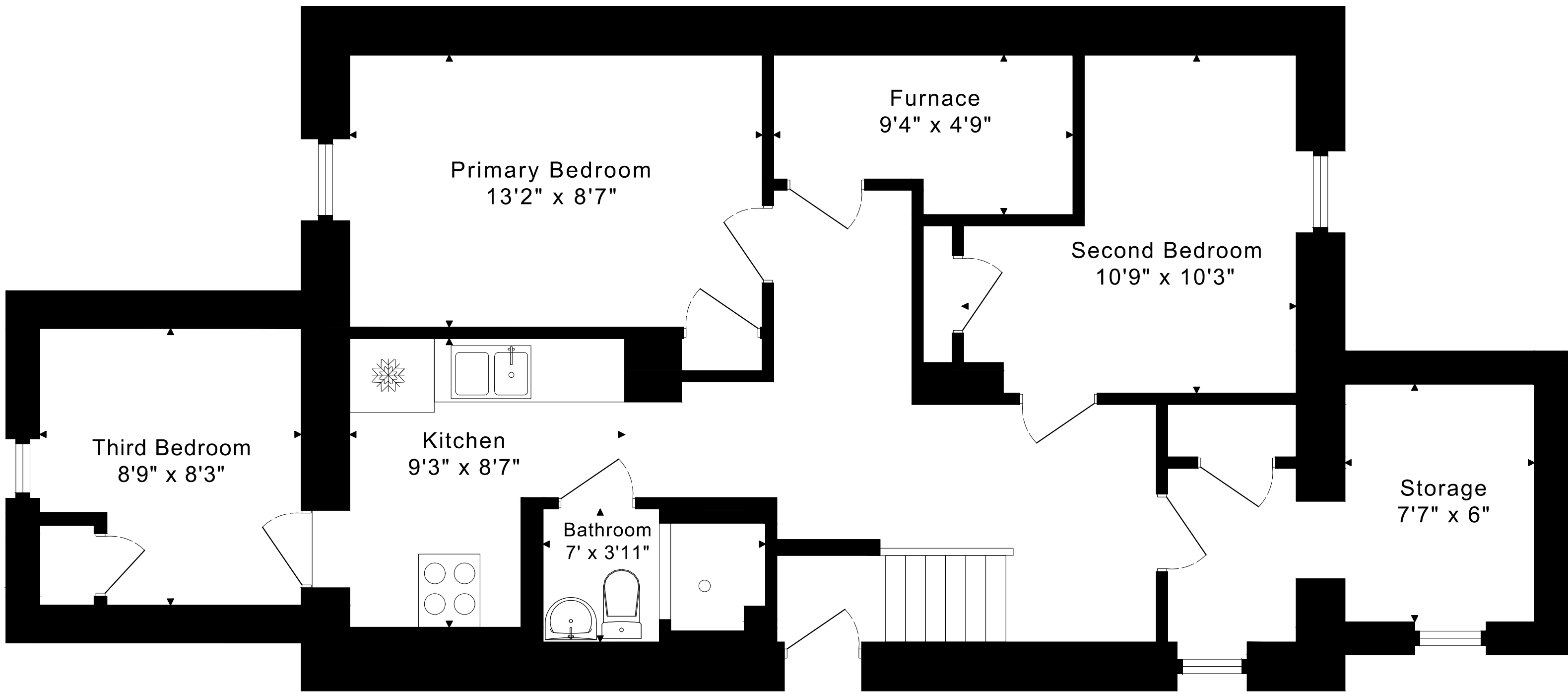


1837 DUFFERIN STREET  
FLOOR PLANS  
SECOND FLOOR 690 SQUARE FEET



1837 DUFFERIN STREET  
FLOOR PLANS

LOWER FLOOR 870 SQUARE FEET



1837 DUFFERIN STREET ROOM MEASUREMENTS

Floor	Room	Imperial						Metric [m]		
		Length		Width		Height		Length	Width	Height
		Feet	Inches	Feet	Inches	Feet	Inches			
Second	Kitchen	9	11	8	0	8	3	3,02	2,44	2,51
	Primary Bedroom	13	8	8	7	8	3	4,17	2,62	2,51
	Second Bedroom	14	5	8	7	8	3	4,39	2,62	2,51
	Third Bedroom	13	11	10	1	8	3	4,24	3,07	2,51
	Bathroom	6	11	5	3	8	3	2,11	1,60	2,51
Main	Entry	7	5	4	5	8	7	2,26	1,35	2,62
	Living Room	11	0	9	7	8	7	3,35	2,92	2,62
	Kitchen	8	9	7	8	8	7	2,67	2,34	2,62
	Primary Bedroom	11	3	9	7	8	7	3,43	2,92	2,62
	Second Bedroom	9	11	9	1	8	7	3,02	2,77	2,62
	Bathroom	5	5	5	1	8	5	1,65	1,55	2,57
Lower	Kitchen	9	3	8	7	6	8	2,82	2,62	2,03
	Primary Bedroom	13	2	8	7	6	8	4,01	2,62	2,03
	Second Bedroom	10	9	10	3	6	8	3,28	3,12	2,03
	Third Bedroom	8	9	8	3	6	5	2,67	2,51	1,96
	Bathroom	7	0	3	11	6	8	2,13	1,19	2,03
	Storage	7	7	6	0	6	8	2,31	1,83	2,03
	Furnace	9	4	4	9	6	8	2,84	1,45	2,03

CAPTURED ON: 10 OCT 2025  
DIMENSIONS ARE APPROXIMATE AND SHOULD BE CONSIDERED  
ILLUSTRATIVE ONLY.

1380 sq ft + 870 sq ft  
BELOW GRADE

The following is a disclaimer regarding the approximate nature of dimensions and floor areas listed in this document:

---

**Disclaimer:**

The dimensions and floor areas listed in this document are provided as an estimate only and are intended to be used for illustration purposes only. These measurements are not necessarily meant to be a perfect representation of the actual space.

**Notes regarding measurement methods and accuracy:**

The utilization of laser measurement technology during the 3D model capturing process at the location provides an accurate representation of floor plans, with a typical margin of error of 3-5%. For the most accurate and official measurement data, it is advised to consult official documents such as MPAC records, builder's pre-construction plans, or data from certified measurement companies.

Exterior wall thickness is included in the calculation of the overall square footage and is considered as a component of the footprint. The wall thickness measurement is obtained onsite whenever possible, or estimated in the event where obtaining onsite measurements is not possible, such as in the case of condominium buildings where wall thickness may vary throughout the building.