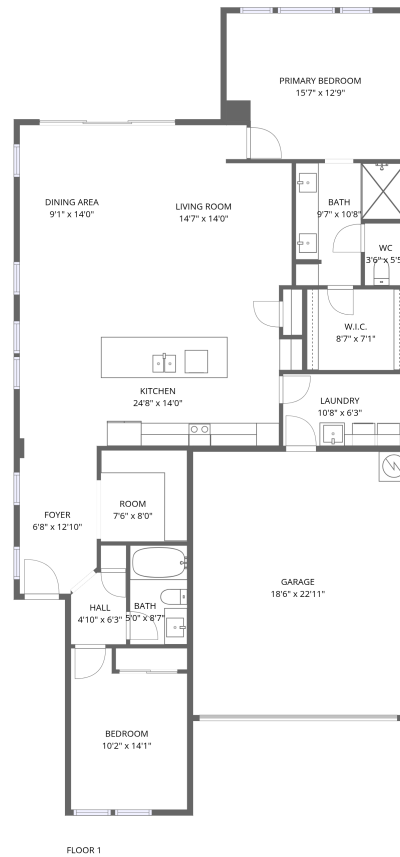


Home report

**18324 Spring Valley Court, Rio Verde, Maricopa County, Arizona,  
United States, 85263**

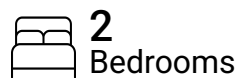


**Total Area: 1469 sq. ft**

Floor 1: 1469 sq. ft

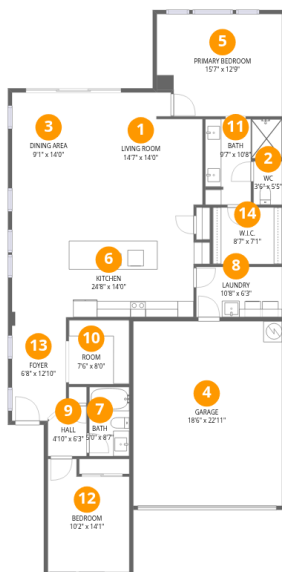
Excluded: Garage 425 sq. ft, Walls: 109 sq. ft

## Property summary



Home report

18324 Spring Valley Court, Rio Verde, Maricopa County, Arizona, United States, 85263



## Room dimensions

Floor 1

Total:1469sqft

Excluded: 425sqft

#		Max Dimensions	sqft	Included
1	Living Room	14'7" x 14'0"	191 sq. ft	Yes
2	WC	3'6" x 5'5"	19 sq. ft	Yes
3	Dining Area	9'1" x 14'0"	127 sq. ft	Yes
4	Garage	18'6" x 22'11"	425 sq. ft	No
5	Primary Bedroom	15'7" x 12'9"	191 sq. ft	Yes
6	Kitchen	24'8" x 14'0"	322 sq. ft	Yes
7	Bath	5'0" x 8'7"	43 sq. ft	Yes
8	Laundry	10'8" x 6'3"	67 sq. ft	Yes
9	Hall	4'10" x 6'3"	28 sq. ft	Yes
10	Room	7'6" x 8'0"	60 sq. ft	Yes
11	Bath	9'7" x 10'8"	79 sq. ft	Yes

Home report

**18324 Spring Valley Court, Rio Verde, Maricopa County, Arizona,  
United States, 85263**

#		Max Dimensions	sqft	Included
12	Bedroom	10'2" x 14'1"	128 sq. ft	Yes
13	Foyer	6'8" x 12'10"	84 sq. ft	Yes
14	W.I.C.	8'7" x 7'1"	61 sq. ft	Yes

18324 Spring Valley Court, Rio Verde, Maricopa County, Arizona,  
United States, 85263

## 1 Floor 1 - Living Room

---



Max Dimensions: 14'7" x  
14'0"  
Calculated Area: 191 sq. ft  
Included: Yes

Heated: Yes  
Finished: Yes  
Enclosed: Yes  
Contiguous:  
Yes  
Permitted: Yes  
Wet space: No  
Addition: No  
Conversion: No

## 2 Floor 1 - WC

---



Max Dimensions: 3'6" x 5'5"  
Calculated Area: 19 sq. ft  
Included: Yes

Heated: Yes  
Finished: Yes  
Enclosed: Yes  
Contiguous: Yes  
Permitted: Yes  
Wet space: Yes  
Addition: No  
Conversion: No

18324 Spring Valley Court, Rio Verde, Maricopa County, Arizona,  
United States, 85263

### 3 Floor 1 - Dining Area

---



Max Dimensions: 9'1" x  
14'0"  
Calculated Area: 127 sq. ft  
Included: Yes

Heated: Yes  
Finished: Yes  
Enclosed: Yes  
Contiguous:  
Yes  
Permitted: Yes  
Wet space: No  
Addition: No  
Conversion: No

### 4 Floor 1 - Garage

---



Max Dimensions: 18'6" x  
22'11"  
Calculated Area: 425 sq. ft  
Included: No

Heated: No  
Finished: No  
Enclosed: Yes  
Contiguous:  
Yes  
Permitted: Yes  
Wet space: No  
Addition: No  
Conversion: No

### 5 Floor 1 - Primary Bedroom

---



Max Dimensions: 15'7" x  
12'9"  
Calculated Area: 191 sq. ft  
Included: Yes

Heated: Yes  
Finished: Yes  
Enclosed: Yes  
Contiguous:  
Yes  
Permitted: Yes  
Wet space: No  
Addition: No  
Conversion: No

**6** Floor 1 - Kitchen

---



Max Dimensions: 24'8" x 14'0"  
Calculated Area: 322 sq. ft  
Included: Yes

Heated: Yes  
Finished: Yes  
Enclosed: Yes  
Contiguous: Yes  
Permitted: Yes  
Wet space: No  
Addition: No  
Conversion: No

**7** Floor 1 - Bath

---



Max Dimensions: 5'0" x 8'7"  
Calculated Area: 43 sq. ft  
Included: Yes

Heated: Yes  
Finished: Yes  
Enclosed: Yes  
Contiguous: Yes  
Permitted: Yes  
Wet space: Yes  
Addition: No  
Conversion: No

**8** Floor 1 - Laundry

---



Max Dimensions: 10'8" x 6'3"  
Calculated Area: 67 sq. ft  
Included: Yes

Heated: Yes  
Finished: Yes  
Enclosed: Yes  
Contiguous: Yes  
Permitted: Yes  
Wet space: No  
Addition: No  
Conversion: No

**9** Floor 1 - Hall

---



Max Dimensions: 4'10" x 6'3"  
Calculated Area: 28 sq. ft  
Included: Yes

Heated: Yes  
Finished: Yes  
Enclosed: Yes  
Contiguous: Yes  
Permitted: Yes  
Wet space: No  
Addition: No  
Conversion: No

**10** Floor 1 - Room

---



Max Dimensions: 7'6" x 8'0"  
Calculated Area: 60 sq. ft  
Included: Yes

Heated: Yes  
Finished: Yes  
Enclosed: Yes  
Contiguous: Yes  
Permitted: Yes  
Wet space: No  
Addition: No  
Conversion: No

**11** Floor 1 - Bath

---



Max Dimensions: 9'7" x 10'8"  
Calculated Area: 79 sq. ft  
Included: Yes

Heated: Yes  
Finished: Yes  
Enclosed: Yes  
Contiguous: Yes  
Permitted: Yes  
Wet space: Yes  
Addition: No  
Conversion: No

**12** Floor 1 - Bedroom

---



Max Dimensions: 10'2" x 14'1"  
Calculated Area: 128 sq. ft  
Included: Yes

Heated: Yes  
Finished: Yes  
Enclosed: Yes  
Contiguous: Yes  
Permitted: Yes  
Wet space: No  
Addition: No  
Conversion: No

**13** Floor 1 - Foyer

---



Max Dimensions: 6'8" x 12'10"  
Calculated Area: 84 sq. ft  
Included: Yes

Heated: Yes  
Finished: Yes  
Enclosed: Yes  
Contiguous: Yes  
Permitted: Yes  
Wet space: No  
Addition: No  
Conversion: No

**14** Floor 1 - W.I.C.

---



Max Dimensions: 8'7" x 7'1"  
Calculated Area: 61 sq. ft  
Included: Yes

Heated: Yes  
Finished: Yes  
Enclosed: Yes  
Contiguous: Yes  
Permitted: Yes  
Wet space: No  
Addition: No  
Conversion: No